

Matriculation

Diversity Pipeline

Chemistry

Fall 2013 - Fall 2017

	Fall Semester Year	Applied					Admitted					Non-URM Admitted to Applied Yield %	URM Admitted to Applied Yield %	New Enrollment					Non-URM Enrolled to Admitted Yield %	URM Enrolled to Admitted Yield %	Total Enrollment				
		Grand Total	Non-URM Total		URM Total		Grand Total	Non-URM Total		URM Total				Grand Total	Non-URM Total		URM Total				Grand Total	Non-URM Total		URM Total	
			Count	%	Count	%		Count	%	Count	%				Count	%	Count	%				Count	%	Count	%
All	2013	137	132	96.4%	5	3.6%	50	46	92.0%	4	8.0%	34.8%	80.0%	22	20	90.9%	2	9.1%	43.5%	50.0%	138	132	95.7%	6	4.3%
	2014	128	124	96.9%	4	3.1%	44	42	95.5%	2	4.5%	33.9%	50.0%	22	21	95.5%	1	4.5%	50.0%	50.0%	131	125	95.4%	6	4.6%
	2015	129	127	98.4%	2	1.6%	50	49	98.0%	1	2.0%	38.6%	50.0%	20	20	100.0%	0	0.0%	40.8%	0.0%	126	122	96.8%	4	3.2%
	2016	158	145	91.8%	13	8.2%	50	44	88.0%	6	12.0%	30.3%	46.2%	25	22	88.0%	3	12.0%	50.0%	50.0%	138	132	95.7%	6	4.3%
	2017	164	153	93.3%	11	6.7%	65	60	92.3%	5	7.7%	39.2%	45.5%	34	31	91.2%	3	8.8%	51.7%	60.0%	148	140	94.6%	8	5.4%
	Average	143	136	95.1%	7	4.9%	52	48	93.1%	4	6.9%	35.4%	51.4%	25	23	92.7%	2	7.3%	47.3%	50.0%	136	130	95.6%	6	4.4%
Masters & IBHE Certificate	2013	26	26	100.0%	0	0.0%	0	0	0.0%	0	0.0%	0.0%	0.0%	0	0	0.0%	0	0.0%	0.0%	0.0%	1	1	100.0%	0	0.0%
	2014	15	15	100.0%	0	0.0%	0	0	0.0%	0	0.0%	0.0%	0.0%	0	0	0.0%	0	0.0%	0.0%	0.0%	2	2	100.0%	0	0.0%
	2015	15	15	100.0%	0	0.0%	0	0	0.0%	0	0.0%	0.0%	0.0%	0	0	0.0%	0	0.0%	0.0%	0.0%	0	0	0.0%	0	0.0%
	2016	24	22	91.7%	2	8.3%	0	0	0.0%	0	0.0%	0.0%	0.0%	0	0	0.0%	0	0.0%	0.0%	0.0%	3	3	100.0%	0	0.0%
	2017	7	6	85.7%	1	14.3%	0	0	0.0%	0	0.0%	0.0%	0.0%	0	0	0.0%	0	0.0%	0.0%	0.0%	2	2	100.0%	0	0.0%
	Average	17	17	96.6%	1	3.4%	0	0	0.0%	0	0.0%	0.0%	0.0%	0	0	0.0%	0	0.0%	0.0%	0.0%	2	2	100.0%	0	0.0%
Doctorate	2013	111	106	95.5%	5	4.5%	50	46	92.0%	4	8.0%	43.4%	80.0%	22	20	90.9%	2	9.1%	43.5%	50.0%	137	131	95.6%	6	4.4%
	2014	113	109	96.5%	4	3.5%	44	42	95.5%	2	4.5%	38.5%	50.0%	22	21	95.5%	1	4.5%	50.0%	50.0%	129	123	95.3%	6	4.7%
	2015	114	112	98.2%	2	1.8%	50	49	98.0%	1	2.0%	43.8%	50.0%	20	20	100.0%	0	0.0%	40.8%	0.0%	126	122	96.8%	4	3.2%
	2016	134	123	91.8%	11	8.2%	50	44	88.0%	6	12.0%	35.8%	54.5%	25	22	88.0%	3	12.0%	50.0%	50.0%	135	129	95.6%	6	4.4%
	2017	157	147	93.6%	10	6.4%	65	60	92.3%	5	7.7%	40.8%	50.0%	34	31	91.2%	3	8.8%	51.7%	60.0%	146	138	94.5%	8	5.5%
	Average	126	119	94.9%	6	5.1%	52	48	93.1%	4	6.9%	40.4%	56.3%	25	23	92.7%	2	7.3%	47.3%	50.0%	135	129	95.5%	6	4.5%
Non-Degree & Campus Certificate	2013	0	0	0.0%	0	0.0%	0	0	0.0%	0	0.0%	0.0%	0.0%	0	0	0.0%	0	0.0%	0.0%	0.0%	0	0	0.0%	0	0.0%
	2014	0	0	0.0%	0	0.0%	0	0	0.0%	0	0.0%	0.0%	0.0%	0	0	0.0%	0	0.0%	0.0%	0.0%	0	0	0.0%	0	0.0%
	2015	0	0	0.0%	0	0.0%	0	0	0.0%	0	0.0%	0.0%	0.0%	0	0	0.0%	0	0.0%	0.0%	0.0%	0	0	0.0%	0	0.0%
	2016	0	0	0.0%	0	0.0%	0	0	0.0%	0	0.0%	0.0%	0.0%	0	0	0.0%	0	0.0%	0.0%	0.0%	0	0	0.0%	0	0.0%
	2017	0	0	0.0%	0	0.0%	0	0	0.0%	0	0.0%	0.0%	0.0%	0	0	0.0%	0	0.0%	0.0%	0.0%	0	0	0.0%	0	0.0%
	Average	0	0	0.0%	0	0.0%	0	0	0.0%	0	0.0%	0.0%	0.0%	0	0	0.0%	0	0.0%	0.0%	0.0%	0	0	0.0%	0	0.0%

Note: URM stands for Under-Represented Minority and includes American Indian or Alaska Native; Black or African-American; Hispanic / Latino race/ethnicity groups

Applications - Total by Race/Ethnicity

Chemistry

Fall 2013 - Fall 2017

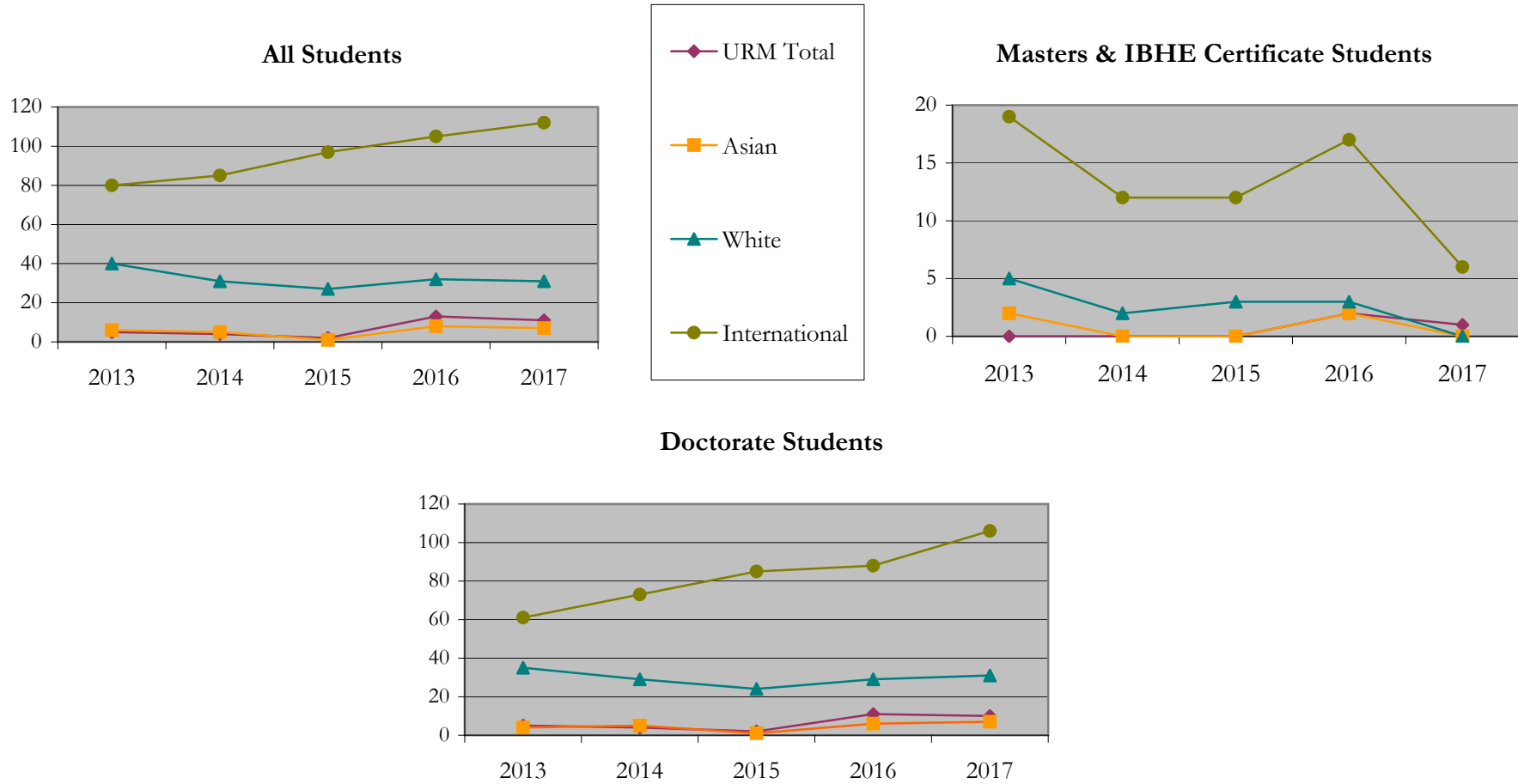
		Total	Under Represented Minorities (URM)																Not Reported		
			American Indian or Alaska Native		Black or African American		Hispanic / Latino		URM Total		Asian		Native Hawaiian or Pacific Islander		White		Two or More Races			International	
			Count	%	Count	%	Count	%	Count	%	Count	%	Count	%	Count	%	Count	%		Count	%
All	2013	137	0	0.0	4	2.9	1	0.7	5	3.6	6	4.4	0	0.0	40	29.2	4	2.9	80	58.4	2
	2014	128	0	0.0	1	0.8	3	2.3	4	3.1	5	3.9	0	0.0	31	24.2	2	1.6	85	66.4	1
	2015	129	0	0.0	1	0.8	1	0.8	2	1.6	1	0.8	0	0.0	27	20.9	0	0.0	97	75.2	2
	2016	158	1	0.6	5	3.2	7	4.4	13	8.2	8	5.1	0	0.0	32	20.3	0	0.0	105	66.5	0
	2017	164	0	0.0	4	2.4	7	4.3	11	6.7	7	4.3	0	0.0	31	18.9	2	1.2	112	68.3	1
Masters & IBHE Certificate	2013	26	0	0.0	0	0.0	0	0.0	0	0.0	2	7.7	0	0.0	5	19.2	0	0.0	19	73.1	0
	2014	15	0	0.0	0	0.0	0	0.0	0	0.0	0	0.0	0	0.0	2	13.3	1	6.7	12	80.0	0
	2015	15	0	0.0	0	0.0	0	0.0	0	0.0	0	0.0	0	0.0	3	20.0	0	0.0	12	80.0	0
	2016	24	0	0.0	1	4.2	1	4.2	2	8.3	2	8.3	0	0.0	3	12.5	0	0.0	17	70.8	0
	2017	7	0	0.0	1	14.3	0	0.0	1	14.3	0	0.0	0	0.0	0	0.0	0	0.0	6	85.7	0
Doctorate	2013	111	0	0.0	4	3.6	1	0.9	5	4.5	4	3.6	0	0.0	35	31.5	4	3.6	61	55.0	2
	2014	113	0	0.0	1	0.9	3	2.7	4	3.5	5	4.4	0	0.0	29	25.7	1	0.9	73	64.6	1
	2015	114	0	0.0	1	0.9	1	0.9	2	1.8	1	0.9	0	0.0	24	21.1	0	0.0	85	74.6	2
	2016	134	1	0.7	4	3.0	6	4.5	11	8.2	6	4.5	0	0.0	29	21.6	0	0.0	88	65.7	0
	2017	157	0	0.0	3	1.9	7	4.5	10	6.4	7	4.5	0	0.0	31	19.7	2	1.3	106	67.5	1
Non-Degree & Campus Certificate	2013	0	0	0.0	0	0.0	0	0.0	0	0.0	0	0.0	0	0.0	0	0.0	0	0.0	0	0.0	0
	2014	0	0	0.0	0	0.0	0	0.0	0	0.0	0	0.0	0	0.0	0	0.0	0	0.0	0	0.0	0
	2015	0	0	0.0	0	0.0	0	0.0	0	0.0	0	0.0	0	0.0	0	0.0	0	0.0	0	0.0	0
	2016	0	0	0.0	0	0.0	0	0.0	0	0.0	0	0.0	0	0.0	0	0.0	0	0.0	0	0.0	0
	2017	0	0	0.0	0	0.0	0	0.0	0	0.0	0	0.0	0	0.0	0	0.0	0	0.0	0	0.0	0

Note: URM stands for Under-Represented Minority and includes American Indian or Alaska Native; Black or African-American; Hispanic / Latino race/ethnicity groups

Applications - Total by Race/Ethnicity

Chemistry

Fall 2013 - Fall 2017



Notes: 1) URM stands for Under-Represented Minority and includes American Indian or Alaska Native; Black or African-American; Hispanic / Latino race/ethnicity groups

2) Individual URM groups, Native Hawaiian Pacific Islander, Two or More Races, and Other race/ethnicity categories left off this charts due to relatively low numbers

Applications - Admitted

by Race/Ethnicity

Chemistry

Fall 2013 - Fall 2017

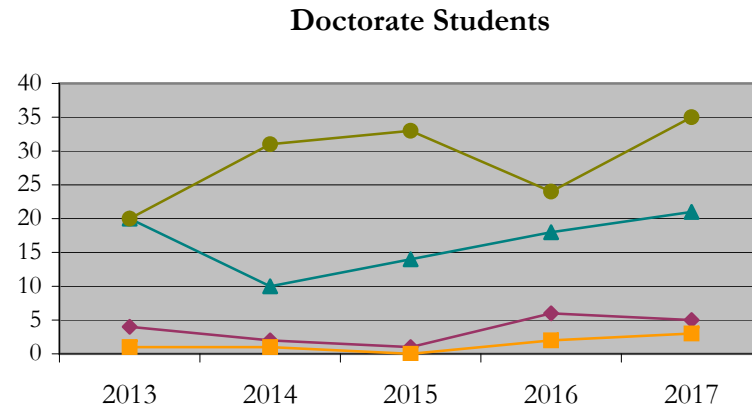
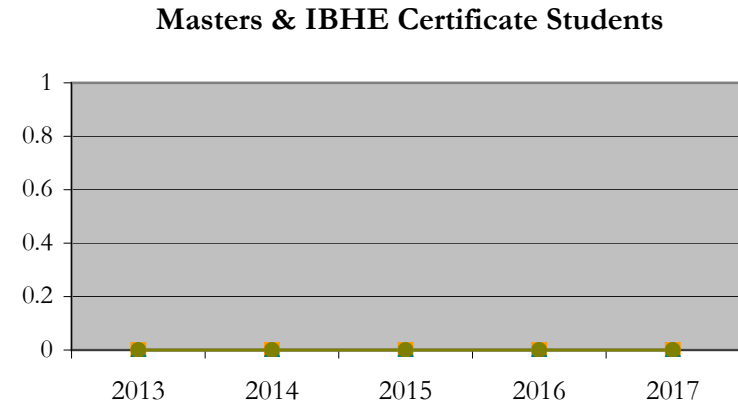
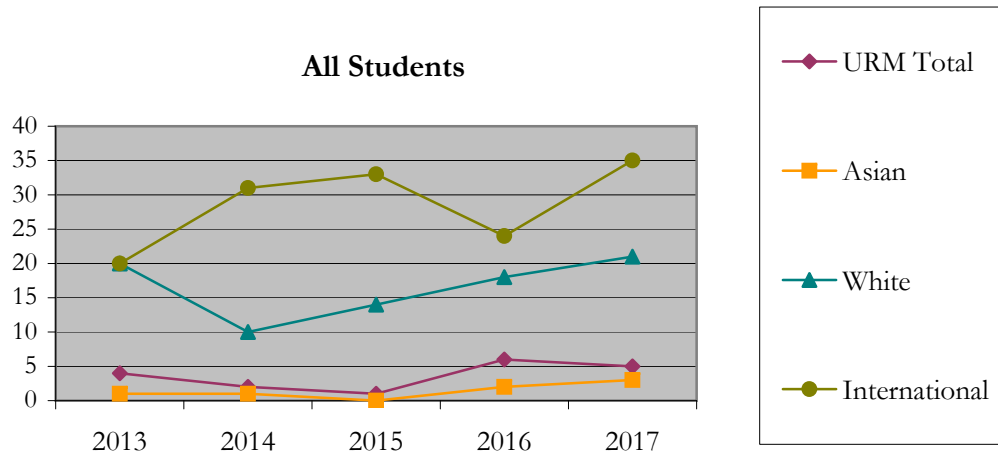
		Total	Under Represented Minorities (URM)								Asian		Native Hawaiian or Pacific Islander		White		Two or More Races		International		Not Reported
			American Indian or Alaska Native		Black or African American		Hispanic / Latino		URM Total												
			Count	%	Count	%	Count	%	Count	%											
All	2013	50	0	0.0	3	6.0	1	2.0	4	8.0	1	2.0	0	0.0	20	40.0	4	8.0	20	40.0	1
	2014	44	0	0.0	1	2.3	1	2.3	2	4.5	1	2.3	0	0.0	10	22.7	0	0.0	31	70.5	0
	2015	50	0	0.0	0	0.0	1	2.0	1	2.0	0	0.0	0	0.0	14	28.0	0	0.0	33	66.0	2
	2016	50	1	2.0	2	4.0	3	6.0	6	12.0	2	4.0	0	0.0	18	36.0	0	0.0	24	48.0	0
	2017	65	0	0.0	1	1.5	4	6.2	5	7.7	3	4.6	0	0.0	21	32.3	1	1.5	35	53.8	0
Masters & IBHE Certificate	2013	0	0	0.0	0	0.0	0	0.0	0	0.0	0	0.0	0	0.0	0	0.0	0	0.0	0	0.0	0
	2014	0	0	0.0	0	0.0	0	0.0	0	0.0	0	0.0	0	0.0	0	0.0	0	0.0	0	0.0	0
	2015	0	0	0.0	0	0.0	0	0.0	0	0.0	0	0.0	0	0.0	0	0.0	0	0.0	0	0.0	0
	2016	0	0	0.0	0	0.0	0	0.0	0	0.0	0	0.0	0	0.0	0	0.0	0	0.0	0	0.0	0
	2017	0	0	0.0	0	0.0	0	0.0	0	0.0	0	0.0	0	0.0	0	0.0	0	0.0	0	0.0	0
Doctorate	2013	50	0	0.0	3	6.0	1	2.0	4	8.0	1	2.0	0	0.0	20	40.0	4	8.0	20	40.0	1
	2014	44	0	0.0	1	2.3	1	2.3	2	4.5	1	2.3	0	0.0	10	22.7	0	0.0	31	70.5	0
	2015	50	0	0.0	0	0.0	1	2.0	1	2.0	0	0.0	0	0.0	14	28.0	0	0.0	33	66.0	2
	2016	50	1	2.0	2	4.0	3	6.0	6	12.0	2	4.0	0	0.0	18	36.0	0	0.0	24	48.0	0
	2017	65	0	0.0	1	1.5	4	6.2	5	7.7	3	4.6	0	0.0	21	32.3	1	1.5	35	53.8	0
Non-Degree & Campus Certificate	2013	0	0	0.0	0	0.0	0	0.0	0	0.0	0	0.0	0	0.0	0	0.0	0	0.0	0	0.0	0
	2014	0	0	0.0	0	0.0	0	0.0	0	0.0	0	0.0	0	0.0	0	0.0	0	0.0	0	0.0	0
	2015	0	0	0.0	0	0.0	0	0.0	0	0.0	0	0.0	0	0.0	0	0.0	0	0.0	0	0.0	0
	2016	0	0	0.0	0	0.0	0	0.0	0	0.0	0	0.0	0	0.0	0	0.0	0	0.0	0	0.0	0
	2017	0	0	0.0	0	0.0	0	0.0	0	0.0	0	0.0	0	0.0	0	0.0	0	0.0	0	0.0	0

Note: URM stands for Under-Represented Minority and includes American Indian or Alaska Native; Black or African-American; Hispanic / Latino race/ethnicity groups

Applications - Admitted by Race/Ethnicity

Chemistry

Fall 2013 - Fall 2017



Notes: 1) URM stands for Under-Represented Minority and includes American Indian or Alaska Native; Black or African-American; Hispanic / Latino race/ethnicity groups

2) Individual URM groups, Native Hawaiian Pacific Islander, Two or More Races, and Other race/ethnicity categories left off this charts due to relatively low numbers

**Enrollment - New
by Race/Ethnicity**

Chemistry

Fall 2013 - Fall 2017

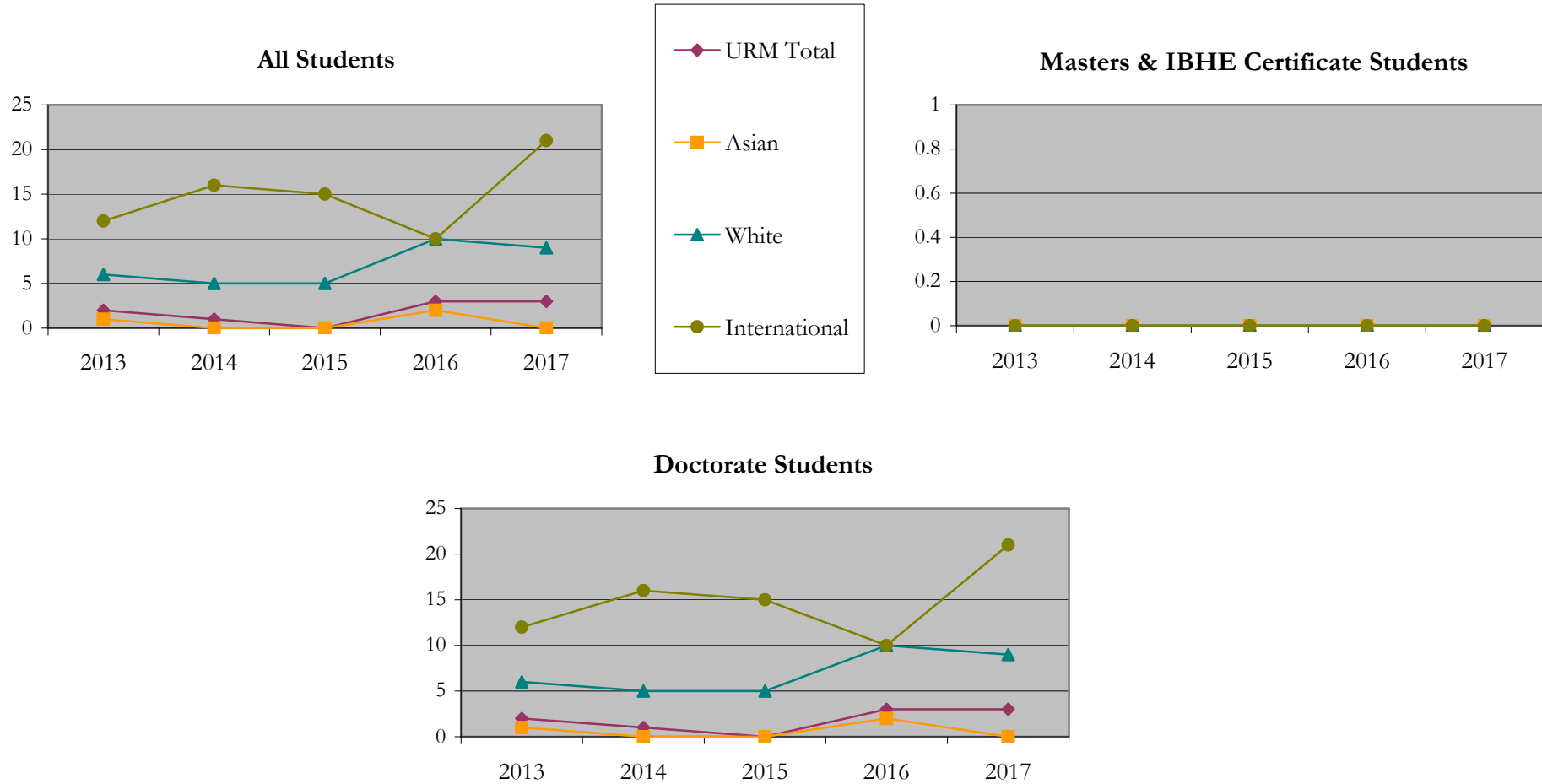
		Total	Under Represented Minorities (URM)								Asian		Native Hawaiian or Pacific Islander		White		Two or More Races		International		Not Reported
			American Indian or Alaska Native		Black or African American		Hispanic / Latino		URM Total												
			Count	%	Count	%	Count	%	Count	%											
All	2013	22	0	0.0	1	4.5	1	4.5	2	9.1	1	4.5	0	0.0	6	27.3	0	0.0	12	54.5	1
	2014	22	0	0.0	0	0.0	1	4.5	1	4.5	0	0.0	0	0.0	5	22.7	0	0.0	16	72.7	0
	2015	20	0	0.0	0	0.0	0	0.0	0	0.0	0	0.0	0	0.0	5	25.0	0	0.0	15	75.0	0
	2016	25	1	4.0	2	8.0	0	0.0	3	12.0	2	8.0	0	0.0	10	40.0	0	0.0	10	40.0	0
	2017	34	0	0.0	0	0.0	3	8.8	3	8.8	0	0.0	0	0.0	9	26.5	1	2.9	21	61.8	0
Masters & IBHE Certificate	2013	0	0	0.0	0	0.0	0	0.0	0	0.0	0	0.0	0	0.0	0	0.0	0	0.0	0	0.0	0
	2014	0	0	0.0	0	0.0	0	0.0	0	0.0	0	0.0	0	0.0	0	0.0	0	0.0	0	0.0	0
	2015	0	0	0.0	0	0.0	0	0.0	0	0.0	0	0.0	0	0.0	0	0.0	0	0.0	0	0.0	0
	2016	0	0	0.0	0	0.0	0	0.0	0	0.0	0	0.0	0	0.0	0	0.0	0	0.0	0	0.0	0
	2017	0	0	0.0	0	0.0	0	0.0	0	0.0	0	0.0	0	0.0	0	0.0	0	0.0	0	0.0	0
Doctorate	2013	22	0	0.0	1	4.5	1	4.5	2	9.1	1	4.5	0	0.0	6	27.3	0	0.0	12	54.5	1
	2014	22	0	0.0	0	0.0	1	4.5	1	4.5	0	0.0	0	0.0	5	22.7	0	0.0	16	72.7	0
	2015	20	0	0.0	0	0.0	0	0.0	0	0.0	0	0.0	0	0.0	5	25.0	0	0.0	15	75.0	0
	2016	25	1	4.0	2	8.0	0	0.0	3	12.0	2	8.0	0	0.0	10	40.0	0	0.0	10	40.0	0
	2017	34	0	0.0	0	0.0	3	8.8	3	8.8	0	0.0	0	0.0	9	26.5	1	2.9	21	61.8	0
Non-Degree & Campus Certificate	2013	0	0	0.0	0	0.0	0	0.0	0	0.0	0	0.0	0	0.0	0	0.0	0	0.0	0	0.0	0
	2014	0	0	0.0	0	0.0	0	0.0	0	0.0	0	0.0	0	0.0	0	0.0	0	0.0	0	0.0	0
	2015	0	0	0.0	0	0.0	0	0.0	0	0.0	0	0.0	0	0.0	0	0.0	0	0.0	0	0.0	0
	2016	0	0	0.0	0	0.0	0	0.0	0	0.0	0	0.0	0	0.0	0	0.0	0	0.0	0	0.0	0
	2017	0	0	0.0	0	0.0	0	0.0	0	0.0	0	0.0	0	0.0	0	0.0	0	0.0	0	0.0	0

Note: URM stands for Under-Represented Minority and includes American Indian or Alaska Native; Black or African-American; Hispanic / Latino race/ethnicity groups

Enrollment - New by Race/Ethnicity

Chemistry

Fall 2013 - Fall 2017



Notes: 1) URM stands for Under-Represented Minority and includes American Indian or Alaska Native; Black or African-American; Hispanic / Latino race/ethnicity groups

2) Individual URM groups, Native Hawaiian Pacific Islander, Two or More Races, and Other race/ethnicity categories left off this charts due to relatively low numbers

**Enrollment - Total
by Race/Ethnicity**

Chemistry

Fall 2013 - Fall 2017

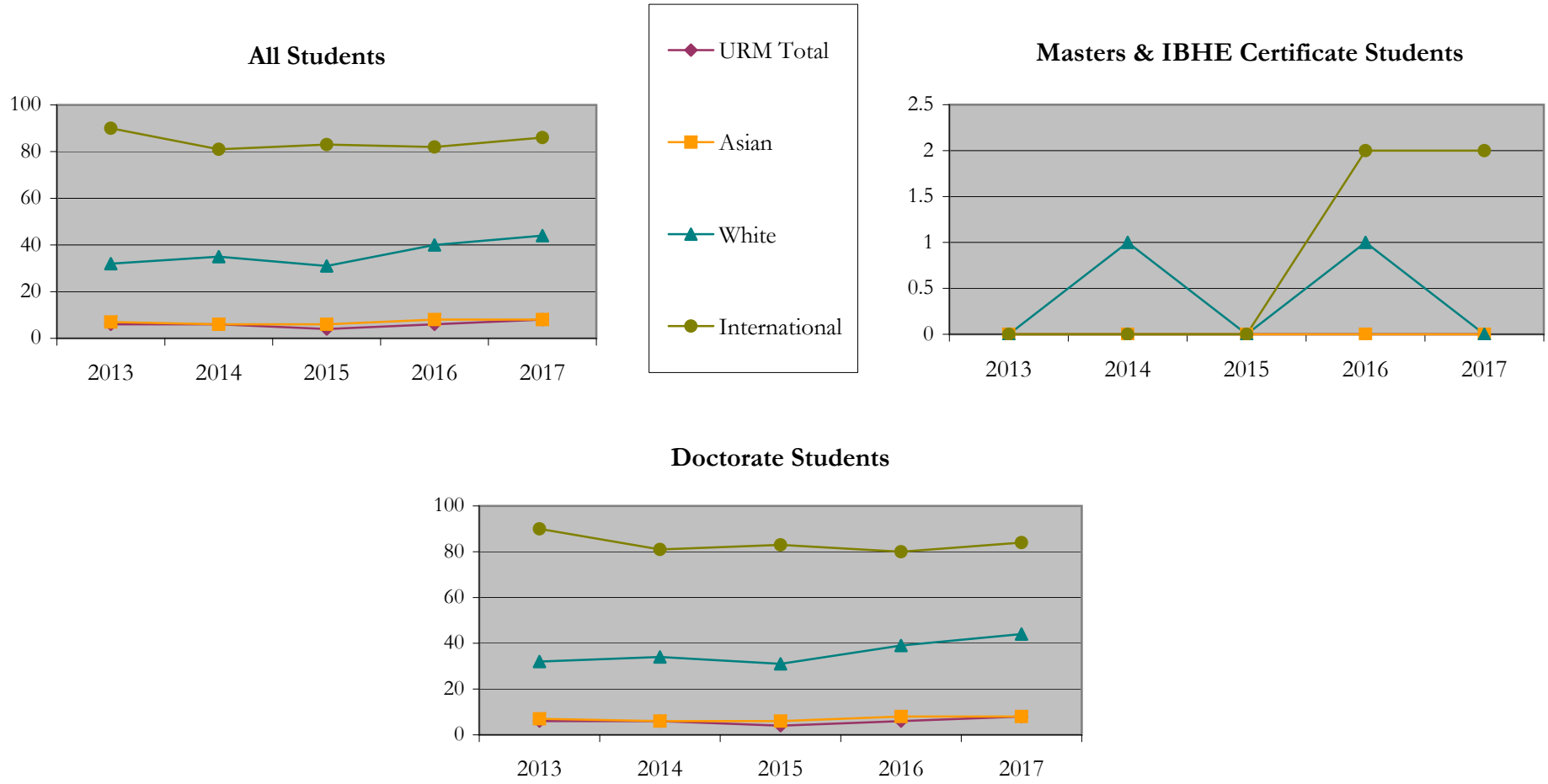
		Total	Under Represented Minorities (URM)								Asian		Native Hawaiian or Pacific Islander		White		Two or More Races		International		Not Reported
			American Indian or Alaska Native		Black or African American		Hispanic / Latino		URM Total												
			Count	%	Count	%	Count	%	Count	%											
All	2013	138	0	0.0	2	1.4	4	2.9	6	4.3	7	5.1	0	0.0	32	23.2	0	0.0	90	65.2	3
	2014	131	0	0.0	1	0.8	5	3.8	6	4.6	6	4.6	0	0.0	35	26.7	1	0.8	81	61.8	2
	2015	126	0	0.0	1	0.8	3	2.4	4	3.2	6	4.8	0	0.0	31	24.6	0	0.0	83	65.9	2
	2016	138	1	0.7	3	2.2	2	1.4	6	4.3	8	5.8	0	0.0	40	29.0	1	0.7	82	59.4	1
	2017	148	1	0.7	2	1.4	5	3.4	8	5.4	8	5.4	0	0.0	44	29.7	2	1.4	86	58.1	0
Masters & IBHE Certificate	2013	1	0	0.0	0	0.0	0	0.0	0	0.0	0	0.0	0	0.0	0	0.0	0	0.0	0	0.0	1
	2014	2	0	0.0	0	0.0	0	0.0	0	0.0	0	0.0	0	0.0	1	50.0	1	50.0	0	0.0	0
	2015	0	0	0.0	0	0.0	0	0.0	0	0.0	0	0.0	0	0.0	0	0.0	0	0.0	0	0.0	0
	2016	3	0	0.0	0	0.0	0	0.0	0	0.0	0	0.0	0	0.0	1	33.3	0	0.0	2	66.7	0
	2017	2	0	0.0	0	0.0	0	0.0	0	0.0	0	0.0	0	0.0	0	0.0	0	0.0	2	100.0	0
Doctorate	2013	137	0	0.0	2	1.5	4	2.9	6	4.4	7	5.1	0	0.0	32	23.4	0	0.0	90	65.7	2
	2014	129	0	0.0	1	0.8	5	3.9	6	4.7	6	4.7	0	0.0	34	26.4	0	0.0	81	62.8	2
	2015	126	0	0.0	1	0.8	3	2.4	4	3.2	6	4.8	0	0.0	31	24.6	0	0.0	83	65.9	2
	2016	135	1	0.7	3	2.2	2	1.5	6	4.4	8	5.9	0	0.0	39	28.9	1	0.7	80	59.3	1
	2017	146	1	0.7	2	1.4	5	3.4	8	5.5	8	5.5	0	0.0	44	30.1	2	1.4	84	57.5	0
Non-Degree & Campus Certificate	2013	0	0	0.0	0	0.0	0	0.0	0	0.0	0	0.0	0	0.0	0	0.0	0	0.0	0	0.0	0
	2014	0	0	0.0	0	0.0	0	0.0	0	0.0	0	0.0	0	0.0	0	0.0	0	0.0	0	0.0	0
	2015	0	0	0.0	0	0.0	0	0.0	0	0.0	0	0.0	0	0.0	0	0.0	0	0.0	0	0.0	0
	2016	0	0	0.0	0	0.0	0	0.0	0	0.0	0	0.0	0	0.0	0	0.0	0	0.0	0	0.0	0
	2017	0	0	0.0	0	0.0	0	0.0	0	0.0	0	0.0	0	0.0	0	0.0	0	0.0	0	0.0	0

Note: URM stands for Under-Represented Minority and includes American Indian or Alaska Native; Black or African-American; Hispanic / Latino race/ethnicity groups

Enrollment - Total by Race/Ethnicity

Chemistry

Fall 2013 - Fall 2017



Notes: 1) URM stands for Under-Represented Minority and includes American Indian or Alaska Native; Black or African-American; Hispanic / Latino race/ethnicity groups

2) Individual URM groups, Native Hawaiian Pacific Islander, Two or More Races, and Other race/ethnicity categories left off this charts due to relatively low numbers

Enrollment

by Student Type, Enrollment Time, and Gender

Chemistry

Fall 2013 - Fall 2017

		Total	New		Continuing		Male		Female		Gender Not Reported	Part-time		Full-time	
			Count	%	Count	%	Count	%	Count	%		Count	%	Count	%
All	2013	138	22	15.9	116	84.1	81	58.7	57	41.3	0	4	2.9	134	97.1
	2014	131	22	16.8	109	83.2	81	61.8	50	38.2	0	2	1.5	129	98.5
	2015	126	20	15.9	106	84.1	80	63.5	46	36.5	0	1	0.8	125	99.2
	2016	138	25	18.1	113	81.9	86	62.3	52	37.7	0	1	0.7	137	99.3
	2017	148	34	23.0	114	77.0	89	60.1	59	39.9	0	1	0.7	147	99.3
Masters & IBHE Certificate	2013	1	0	0.0	1	100.0	0	0.0	1	100.0	0	1	100.0	0	0.0
	2014	2	0	0.0	2	100.0	1	50.0	1	50.0	0	0	0.0	2	100.0
	2015	0	0	0.0	0	0.0	0	0.0	0	0.0	0	0	0.0	0	0.0
	2016	3	0	0.0	3	100.0	3	100.0	0	0.0	0	1	33.3	2	66.7
	2017	2	0	0.0	2	100.0	2	100.0	0	0.0	0	0	0.0	2	100.0
Doctorate	2013	137	22	16.1	115	83.9	81	59.1	56	40.9	0	3	2.2	134	97.8
	2014	129	22	17.1	107	82.9	80	62.0	49	38.0	0	2	1.6	127	98.4
	2015	126	20	15.9	106	84.1	80	63.5	46	36.5	0	1	0.8	125	99.2
	2016	135	25	18.5	110	81.5	83	61.5	52	38.5	0	0	0.0	135	100.0
	2017	146	34	23.3	112	76.7	87	59.6	59	40.4	0	1	0.7	145	99.3
Non-Degree & Campus Certificate	2013	0	0	0.0	0	0.0	0	0.0	0	0.0	0	0	0.0	0	0.0
	2014	0	0	0.0	0	0.0	0	0.0	0	0.0	0	0	0.0	0	0.0
	2015	0	0	0.0	0	0.0	0	0.0	0	0.0	0	0	0.0	0	0.0
	2016	0	0	0.0	0	0.0	0	0.0	0	0.0	0	0	0.0	0	0.0
	2017	0	0	0.0	0	0.0	0	0.0	0	0.0	0	0	0.0	0	0.0

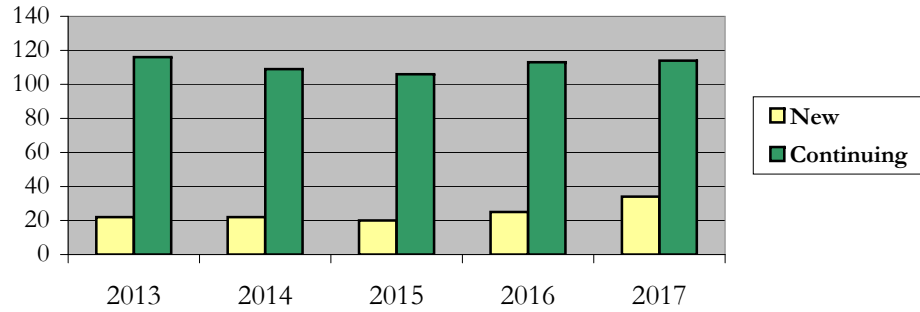
Enrollment

by Student Type, Enrollment Time, and Gender (All Students)

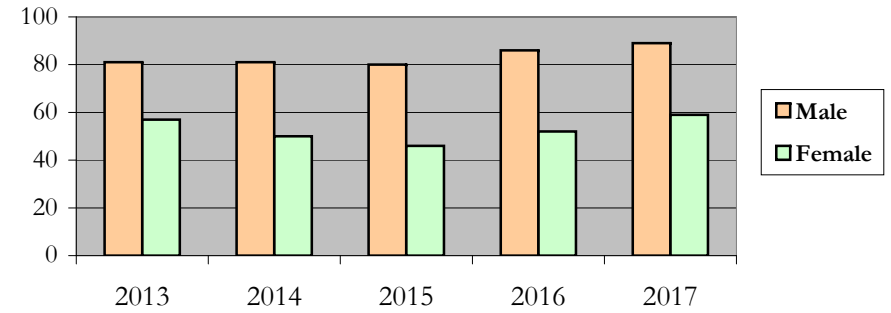
Chemistry

Fall 2013 - Fall 2017

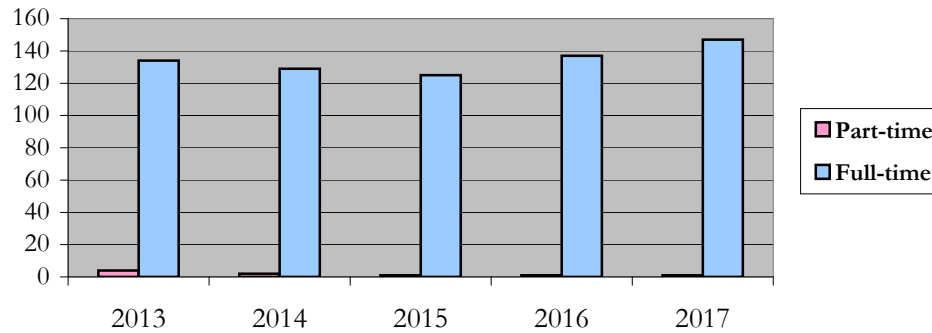
New and Continuing Enrollment



Enrollment by Gender



Enrollment by Student Enrollment Time

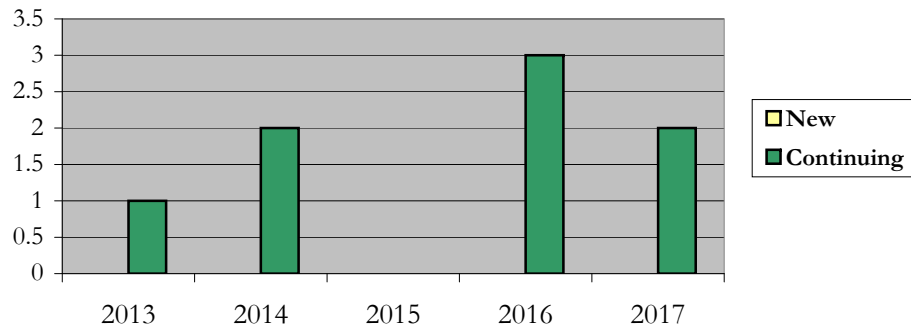


Enrollment by Student Type, Enrollment Time, and Gender (Master's Students)

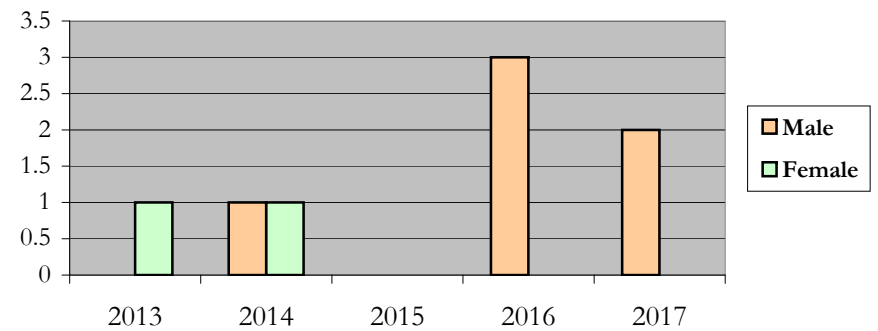
Chemistry

Fall 2013 - Fall 2017

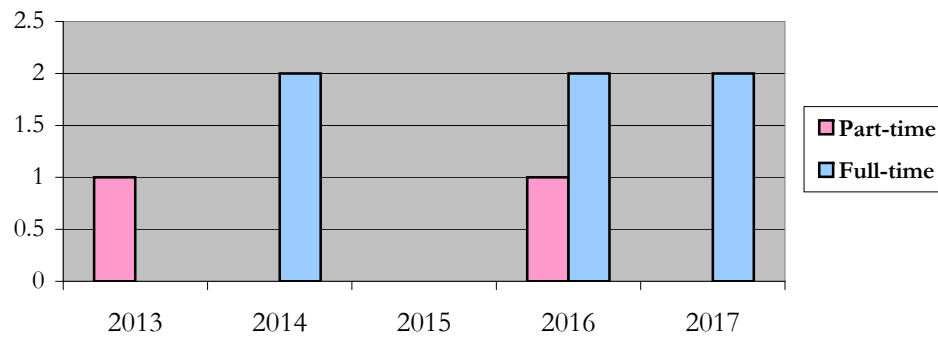
New and Continuing Enrollment



Enrollment by Gender



Enrollment by Student Enrollment Time



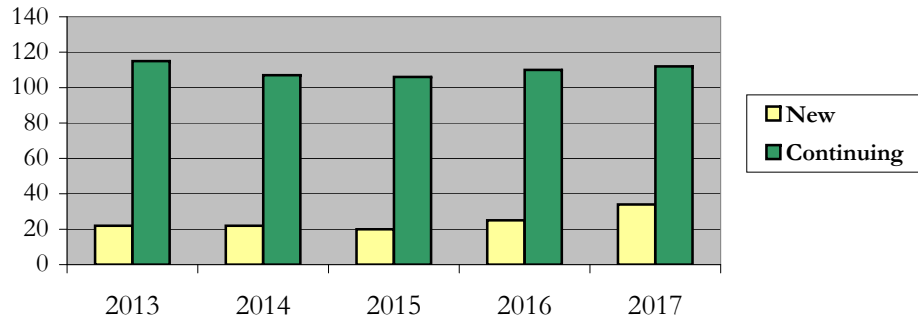
Enrollment

by Student Type, Enrollment Time, and Gender (Doctorate Students)

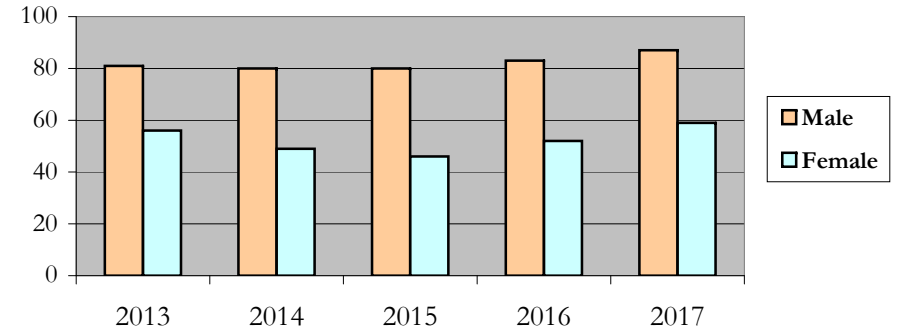
Chemistry

Fall 2013 - Fall 2017

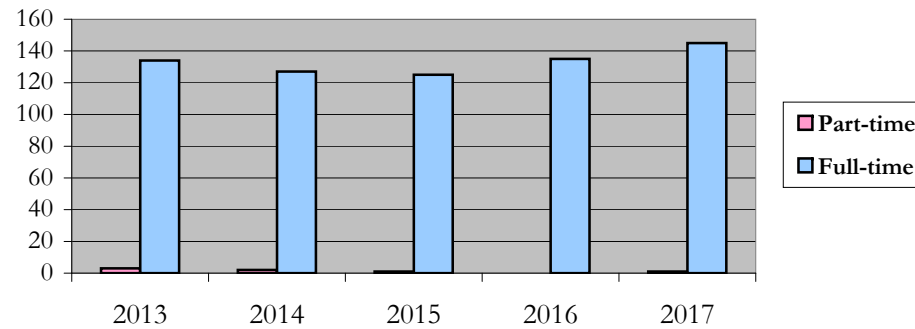
New and Continuing Enrollment



Enrollment by Gender



Enrollment by Student Enrollment Time



Degrees Conferred by Race/Ethnicity

Chemistry

Fall 2013 - Fall 2017

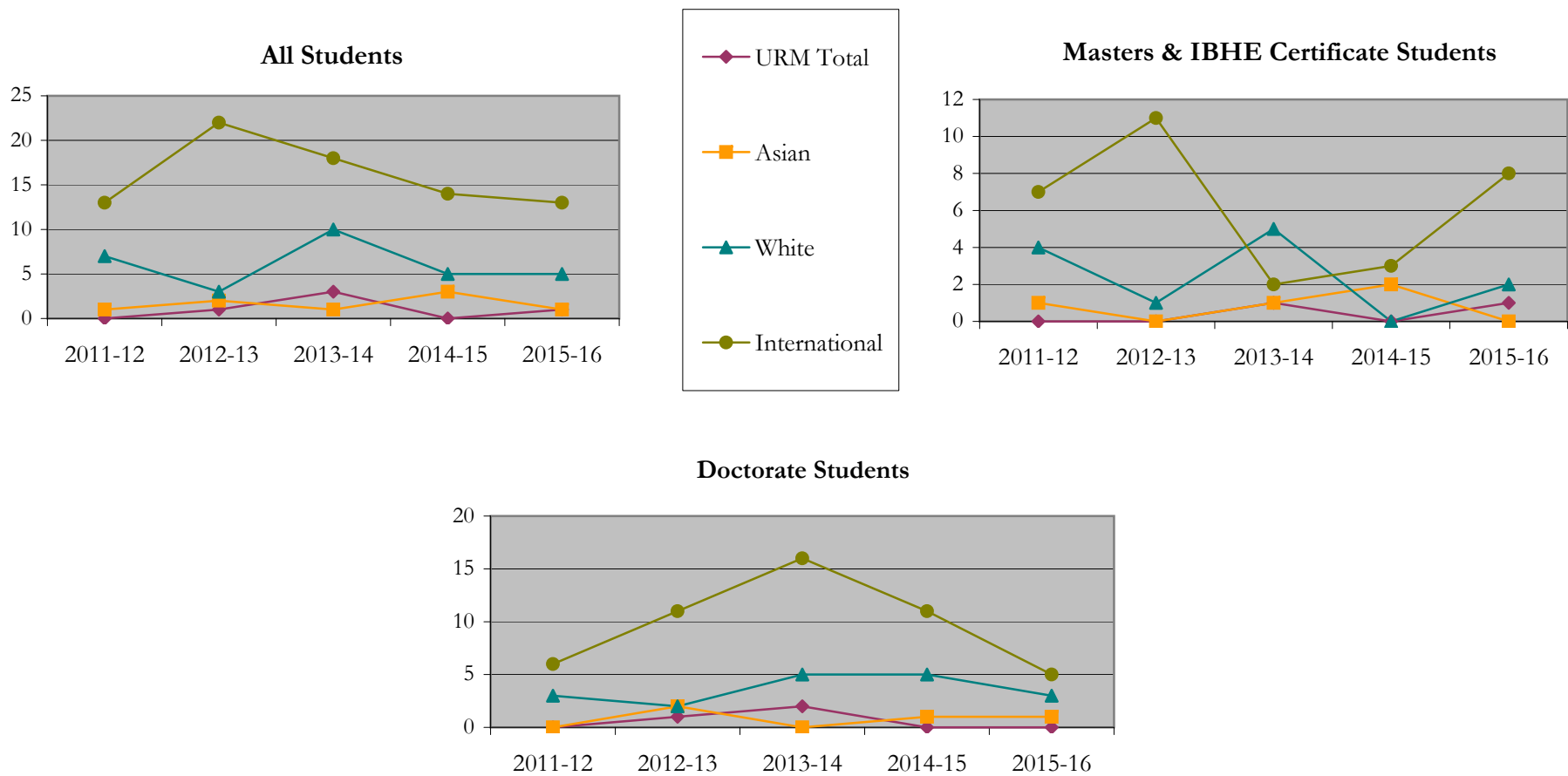
		Total	Under Represented Minorities (URM)								Asian	Native Hawaiian or Pacific Islander		White		Two or More Races		International		Not Reported	
			American Indian or Alaska Native		Black or African American		Hispanic / Latino		URM Total			Count	%	Count	%	Count	%	Count	%	Count	%
			Count	%	Count	%	Count	%	Count	%											
All	2012 - 13	22	0	0.0	0	0.0	0	0.0	0	0.0	1	4.5	0	0.0	7	31.8	0	0.0	13	59.1	1
	2013 - 14	29	0	0.0	1	3.4	0	0.0	1	3.4	2	6.9	0	0.0	3	10.3	0	0.0	22	75.9	1
	2014 - 15	33	0	0.0	1	3.0	2	6.1	3	9.1	1	3.0	0	0.0	10	30.3	1	3.0	18	54.5	0
	2015 - 16	22	0	0.0	0	0.0	0	0.0	0	0.0	3	13.6	0	0.0	5	22.7	0	0.0	14	63.6	0
	2016 - 17	20	0	0.0	0	0.0	1	5.0	1	5.0	1	5.0	0	0.0	5	25.0	0	0.0	13	65.0	0
Masters & IBHE Certificate	2012 - 13	12	0	0.0	0	0.0	0	0.0	0	0.0	1	8.3	0	0.0	4	33.3	0	0.0	7	58.3	0
	2013 - 14	13	0	0.0	0	0.0	0	0.0	0	0.0	0	0.0	0	0.0	1	7.7	0	0.0	11	84.6	1
	2014 - 15	10	0	0.0	0	0.0	1	10.0	1	10.0	1	10.0	0	0.0	5	50.0	1	10.0	2	20.0	0
	2015 - 16	5	0	0.0	0	0.0	0	0.0	0	0.0	2	40.0	0	0.0	0	0.0	0	0.0	3	60.0	0
	2016 - 17	11	0	0.0	0	0.0	1	9.1	1	9.1	0	0.0	0	0.0	2	18.2	0	0.0	8	72.7	0
Doctorate	2012 - 13	10	0	0.0	0	0.0	0	0.0	0	0.0	0	0.0	0	0.0	3	30.0	0	0.0	6	60.0	1
	2013 - 14	16	0	0.0	1	6.3	0	0.0	1	6.3	2	12.5	0	0.0	2	12.5	0	0.0	11	68.8	0
	2014 - 15	23	0	0.0	1	4.3	1	4.3	2	8.7	0	0.0	0	0.0	5	21.7	0	0.0	16	69.6	0
	2015 - 16	17	0	0.0	0	0.0	0	0.0	0	0.0	1	5.9	0	0.0	5	29.4	0	0.0	11	64.7	0
	2016 - 17	9	0	0.0	0	0.0	0	0.0	0	0.0	1	11.1	0	0.0	3	33.3	0	0.0	5	55.6	0
Non-Degree & Campus Certificate	2012 - 13	0	0	0.0	0	0.0	0	0.0	0	0.0	0	0.0	0	0.0	0	0.0	0	0.0	0	0.0	0
	2013 - 14	0	0	0.0	0	0.0	0	0.0	0	0.0	0	0.0	0	0.0	0	0.0	0	0.0	0	0.0	0
	2014 - 15	0	0	0.0	0	0.0	0	0.0	0	0.0	0	0.0	0	0.0	0	0.0	0	0.0	0	0.0	0
	2015 - 16	0	0	0.0	0	0.0	0	0.0	0	0.0	0	0.0	0	0.0	0	0.0	0	0.0	0	0.0	0
	2016 - 17	0	0	0.0	0	0.0	0	0.0	0	0.0	0	0.0	0	0.0	0	0.0	0	0.0	0	0.0	0

Note: Each row represents a fiscal year, beginning with Summer term and ending with Spring.

Degrees Conferred by Race/Ethnicity

Chemistry

Fall 2013 - Fall 2017



Notes: 1) URM stands for Under-Represented Minority and includes American Indian or Alaska Native; Black or African-American; Hispanic / Latino race/ethnicity groups

2) Individual URM groups, Native Hawaiian Pacific Islander, Two or More Races, and Other race/ethnicity categories left off this charts due to relatively low numbers

Degrees Conferred

by Gender

Chemistry

Fall 2013 - Fall 2017

		Total	Male		Female		Not Reported
			Count	%	Count	%	
All	2012 - 13	22	9	40.9	13	59.1	0
	2013 - 14	29	14	48.3	15	51.7	0
	2014 - 15	33	17	51.5	16	48.5	0
	2015 - 16	22	14	63.6	8	36.4	0
	2016 - 17	20	11	55.0	9	45.0	0
Masters & IBHE Certificate	2012 - 13	12	3	25.0	9	75.0	0
	2013 - 14	13	5	38.5	8	61.5	0
	2014 - 15	10	6	60.0	4	40.0	0
	2015 - 16	5	3	60.0	2	40.0	0
	2016 - 17	11	5	45.5	6	54.5	0
Doctorate	2012 - 13	10	6	60.0	4	40.0	0
	2013 - 14	16	9	56.3	7	43.8	0
	2014 - 15	23	11	47.8	12	52.2	0
	2015 - 16	17	11	64.7	6	35.3	0
	2016 - 17	9	6	66.7	3	33.3	0
Campus Certificates	2012 - 13	0	0	0.0	0	0.0	0
	2013 - 14	0	0	0.0	0	0.0	0
	2014 - 15	0	0	0.0	0	0.0	0
	2015 - 16	0	0	0.0	0	0.0	0
	2016 - 17	0	0	0.0	0	0.0	0

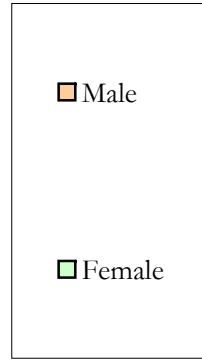
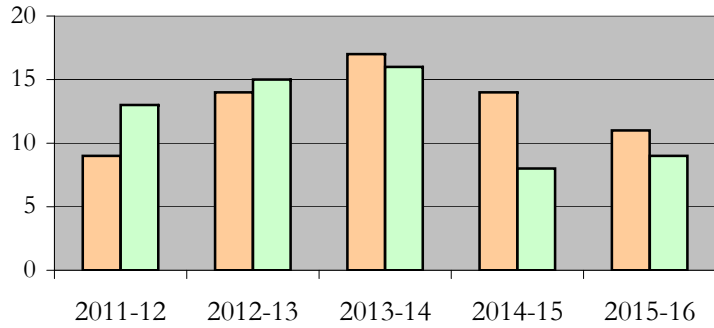
Note: Each row represents a fiscal year, beginning with Summer term and ending with Spring.

Degrees Conferred by Gender

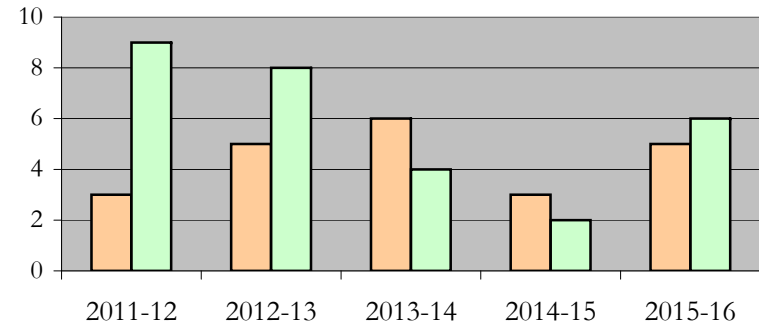
Chemistry

Fall 2013 - Fall 2017

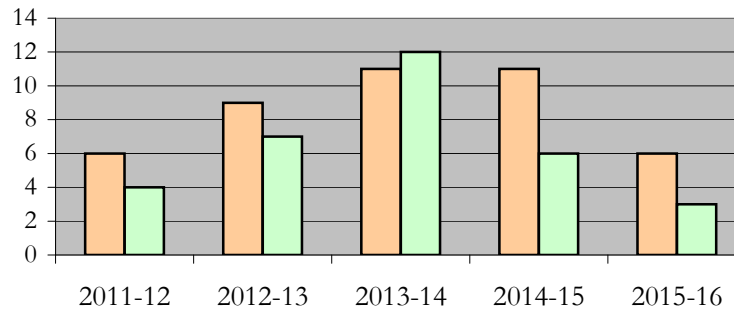
All Students



Masters & IBHE Certificate Students



Doctorate Students



Appendix A

Chemistry

Fall 2013 - Fall 2017

List of program codes included in this document

20FS0335MS

20FS0335PHD

Notes: 1) Program codes are sorted by alphabetical order in column-wise fashion

2) Program codes highlighted in yellow did not have applications, enrollment, nor degrees conferred in the covered period