

Matriculation

Diversity Pipeline

Biological Sciences

Fall 2013 - Fall 2017

	Fall Semester Year	Applied					Admitted					Non-URM Admitted to Applied Yield %	URM Admitted to Applied Yield %	New Enrollment					Non-URM Enrolled to Admitted Yield %	URM Enrolled to Admitted Yield %	Total Enrollment				
		Grand Total	Non-URM Total		URM Total		Grand Total	Non-URM Total		URM Total				Grand Total	Non-URM Total		URM Total				Grand Total	Non-URM Total		URM Total	
			Count	%	Count	%		Count	%	Count	%				Count	%	Count	%				Count	%	Count	%
All	2013	175	159	90.9%	16	9.1%	33	29	87.9%	4	12.1%	18.2%	25.0%	15	13	86.7%	2	13.3%	44.8%	50.0%	105	90	85.7%	15	14.3%
	2014	148	131	88.5%	17	11.5%	37	34	91.9%	3	8.1%	26.0%	17.6%	24	23	95.8%	1	4.2%	67.6%	33.3%	109	94	86.2%	15	13.8%
	2015	165	149	90.3%	16	9.7%	25	24	96.0%	1	4.0%	16.1%	6.3%	13	12	92.3%	1	7.7%	50.0%	100.0%	106	92	86.8%	14	13.2%
	2016	139	128	92.1%	11	7.9%	26	24	92.3%	2	7.7%	18.8%	18.2%	18	17	94.4%	1	5.6%	70.8%	50.0%	106	92	86.8%	14	13.2%
	2017	126	113	89.7%	13	10.3%	10	9	90.0%	1	10.0%	8.0%	7.7%	10	9	90.0%	1	10.0%	100.0%	100.0%	99	85	85.9%	14	14.1%
	Average	151	136	90.3%	15	9.7%	26	24	91.6%	2	8.4%	17.6%	15.1%	16	15	92.5%	1	7.5%	61.7%	54.5%	105	91	86.3%	14	13.7%
Masters & IBHE Certificate	2013	63	55	87.3%	8	12.7%	1	1	100.0%	0	0.0%	1.8%	0.0%	1	1	100.0%	0	0.0%	100.0%	0.0%	6	5	83.3%	1	16.7%
	2014	49	43	87.8%	6	12.2%	1	1	100.0%	0	0.0%	2.3%	0.0%	1	1	100.0%	0	0.0%	100.0%	0.0%	7	6	85.7%	1	14.3%
	2015	46	42	91.3%	4	8.7%	0	0	0.0%	0	0.0%	0.0%	0.0%	0	0	0.0%	0	0.0%	0.0%	0.0%	2	2	100.0%	0	0.0%
	2016	48	47	97.9%	1	2.1%	2	2	100.0%	0	0.0%	4.3%	0.0%	1	1	100.0%	0	0.0%	50.0%	0.0%	2	2	100.0%	0	0.0%
	2017	46	41	89.1%	5	10.9%	0	0	0.0%	0	0.0%	0.0%	0.0%	0	0	0.0%	0	0.0%	0.0%	0.0%	1	1	100.0%	0	0.0%
	Average	50	46	90.5%	5	9.5%	1	1	100.0%	0	0.0%	1.8%	0.0%	1	1	100.0%	0	0.0%	75.0%	0.0%	4	3	88.9%	0	11.1%
Doctorate	2013	112	104	92.9%	8	7.1%	32	28	87.5%	4	12.5%	26.9%	50.0%	14	12	85.7%	2	14.3%	42.9%	50.0%	99	85	85.9%	14	14.1%
	2014	99	88	88.9%	11	11.1%	36	33	91.7%	3	8.3%	37.5%	27.3%	23	22	95.7%	1	4.3%	66.7%	33.3%	102	88	86.3%	14	13.7%
	2015	119	107	89.9%	12	10.1%	25	24	96.0%	1	4.0%	22.4%	8.3%	13	12	92.3%	1	7.7%	50.0%	100.0%	104	90	86.5%	14	13.5%
	2016	91	81	89.0%	10	11.0%	24	22	91.7%	2	8.3%	27.2%	20.0%	17	16	94.1%	1	5.9%	72.7%	50.0%	104	90	86.5%	14	13.5%
	2017	80	72	90.0%	8	10.0%	10	9	90.0%	1	10.0%	12.5%	12.5%	10	9	90.0%	1	10.0%	100.0%	100.0%	98	84	85.7%	14	14.3%
	Average	100	90	90.2%	10	9.8%	25	23	91.3%	2	8.7%	25.7%	22.4%	15	14	92.2%	1	7.8%	61.2%	54.5%	101	87	86.2%	14	13.8%
Non-Degree & Campus Certificate	2013	0	0	0.0%	0	0.0%	0	0	0.0%	0	0.0%	0.0%	0.0%	0	0	0.0%	0	0.0%	0.0%	0.0%	0	0	0.0%	0	0.0%
	2014	0	0	0.0%	0	0.0%	0	0	0.0%	0	0.0%	0.0%	0.0%	0	0	0.0%	0	0.0%	0.0%	0.0%	0	0	0.0%	0	0.0%
	2015	0	0	0.0%	0	0.0%	0	0	0.0%	0	0.0%	0.0%	0.0%	0	0	0.0%	0	0.0%	0.0%	0.0%	0	0	0.0%	0	0.0%
	2016	0	0	0.0%	0	0.0%	0	0	0.0%	0	0.0%	0.0%	0.0%	0	0	0.0%	0	0.0%	0.0%	0.0%	0	0	0.0%	0	0.0%
	2017	0	0	0.0%	0	0.0%	0	0	0.0%	0	0.0%	0.0%	0.0%	0	0	0.0%	0	0.0%	0.0%	0.0%	0	0	0.0%	0	0.0%
	Average	0	0	0.0%	0	0.0%	0	0	0.0%	0	0.0%	0.0%	0.0%	0	0	0.0%	0	0.0%	0.0%	0.0%	0	0	0.0%	0	0.0%

Note: URM stands for Under-Represented Minority and includes American Indian or Alaska Native; Black or African-American; Hispanic / Latino race/ethnicity groups

Applications - Total by Race/Ethnicity

Biological Sciences

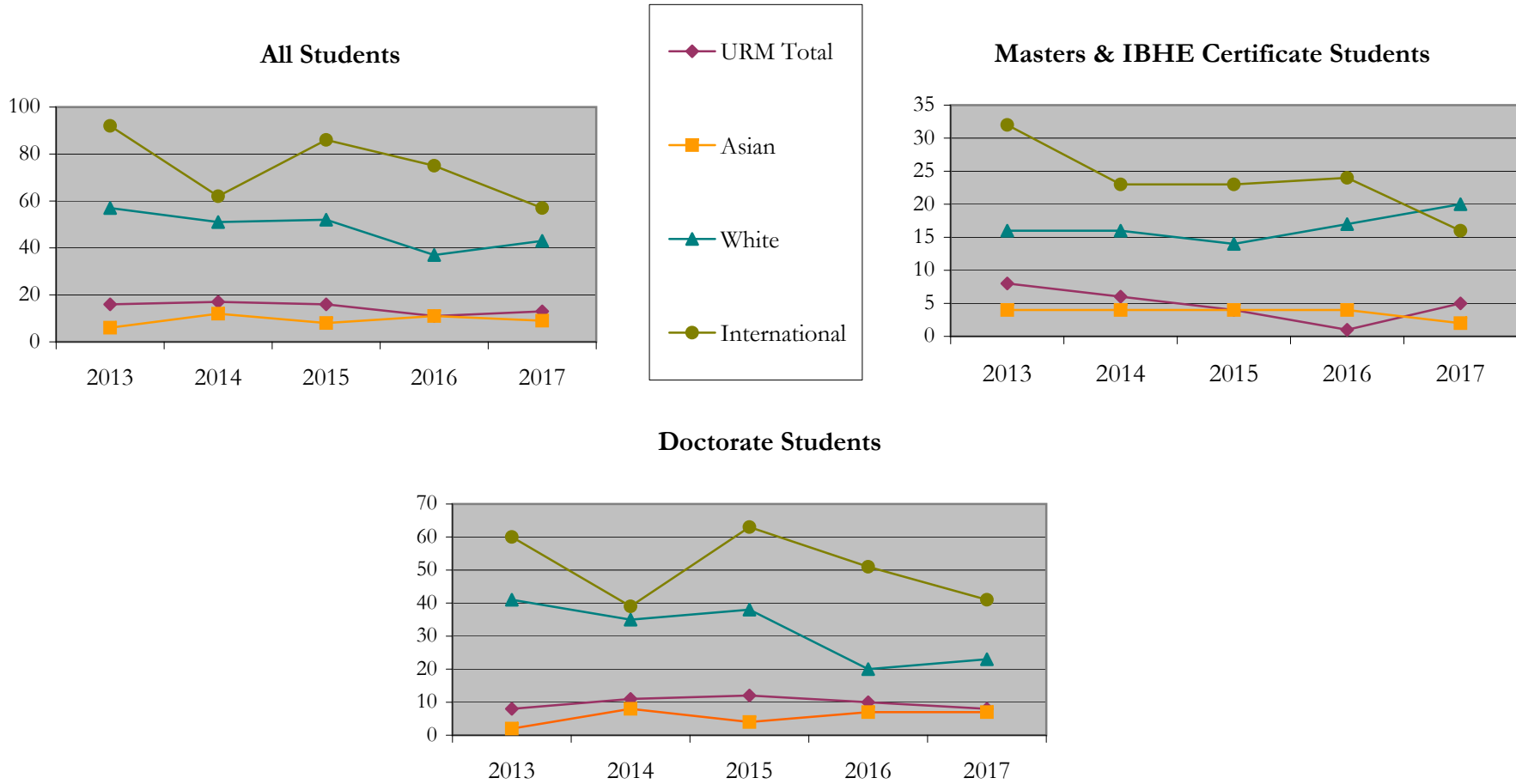
Fall 2013 - Fall 2017

		Total	Under Represented Minorities (URM)																		
			American Indian or Alaska Native		Black or African American		Hispanic / Latino		URM Total		Asian		Native Hawaiian or Pacific Islander		White		Two or More Races		International		Not Reported
			Count	%	Count	%	Count	%	Count	%	Count	%	Count	%	Count	%	Count	%	Count	%	Count
All	2013	175	0	0.0	5	2.9	11	6.3	16	9.1	6	3.4	0	0.0	57	32.6	2	1.1	92	52.6	2
	2014	150	0	0.0	6	4.0	11	7.3	17	11.3	12	8.0	0	0.0	51	34.0	4	2.7	62	41.3	4
	2015	165	0	0.0	5	3.0	11	6.7	16	9.7	8	4.8	0	0.0	52	31.5	2	1.2	86	52.1	1
	2016	139	0	0.0	3	2.2	8	5.8	11	7.9	11	7.9	0	0.0	37	26.6	1	0.7	75	54.0	4
	2017	126	0	0.0	2	1.6	11	8.7	13	10.3	9	7.1	0	0.0	43	34.1	3	2.4	57	45.2	1
Masters & IBHE Certificate	2013	63	0	0.0	3	4.8	5	7.9	8	12.7	4	6.3	0	0.0	16	25.4	1	1.6	32	50.8	2
	2014	49	0	0.0	2	4.1	4	8.2	6	12.2	4	8.2	0	0.0	16	32.7	0	0.0	23	46.9	0
	2015	46	0	0.0	2	4.3	2	4.3	4	8.7	4	8.7	0	0.0	14	30.4	0	0.0	23	50.0	1
	2016	48	0	0.0	1	2.1	0	0.0	1	2.1	4	8.3	0	0.0	17	35.4	0	0.0	24	50.0	2
	2017	46	0	0.0	2	4.3	3	6.5	5	10.9	2	4.3	0	0.0	20	43.5	2	4.3	16	34.8	1
Doctorate	2013	112	0	0.0	2	1.8	6	5.4	8	7.1	2	1.8	0	0.0	41	36.6	1	0.9	60	53.6	0
	2014	101	0	0.0	4	4.0	7	6.9	11	10.9	8	7.9	0	0.0	35	34.7	4	4.0	39	38.6	4
	2015	119	0	0.0	3	2.5	9	7.6	12	10.1	4	3.4	0	0.0	38	31.9	2	1.7	63	52.9	0
	2016	91	0	0.0	2	2.2	8	8.8	10	11.0	7	7.7	0	0.0	20	22.0	1	1.1	51	56.0	2
	2017	80	0	0.0	0	0.0	8	10.0	8	10.0	7	8.8	0	0.0	23	28.8	1	1.3	41	51.3	0
Non-Degree & Campus Certificate	2013	0	0	0.0	0	0.0	0	0.0	0	0.0	0	0.0	0	0.0	0	0.0	0	0.0	0	0.0	0
	2014	0	0	0.0	0	0.0	0	0.0	0	0.0	0	0.0	0	0.0	0	0.0	0	0.0	0	0.0	0
	2015	0	0	0.0	0	0.0	0	0.0	0	0.0	0	0.0	0	0.0	0	0.0	0	0.0	0	0.0	0
	2016	0	0	0.0	0	0.0	0	0.0	0	0.0	0	0.0	0	0.0	0	0.0	0	0.0	0	0.0	0
	2017	0	0	0.0	0	0.0	0	0.0	0	0.0	0	0.0	0	0.0	0	0.0	0	0.0	0	0.0	0

Note: URM stands for Under-Represented Minority and includes American Indian or Alaska Native; Black or African-American; Hispanic / Latino race/ethnicity groups

Applications - Total by Race/Ethnicity

Biological Sciences
Fall 2013 - Fall 2017



Notes: 1) URM stands for Under-Represented Minority and includes American Indian or Alaska Native; Black or African-American; Hispanic / Latino race/ethnicity groups
2) Individual URM groups, Native Hawaiian Pacific Islander, Two or More Races, and Other race/ethnicity categories left off this charts due to relatively low numbers

Applications - Admitted

by Race/Ethnicity

Biological Sciences

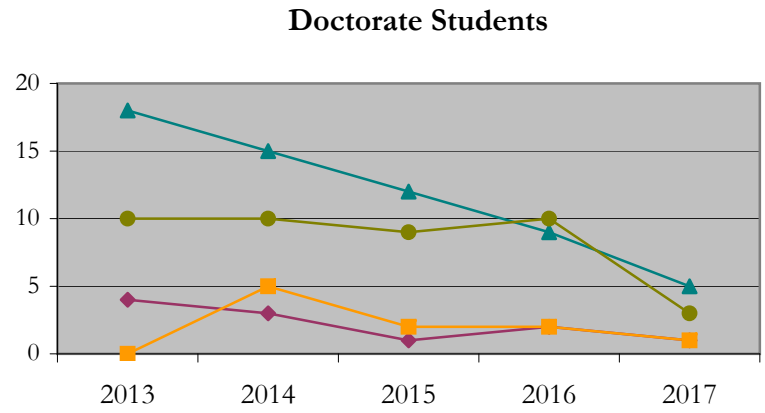
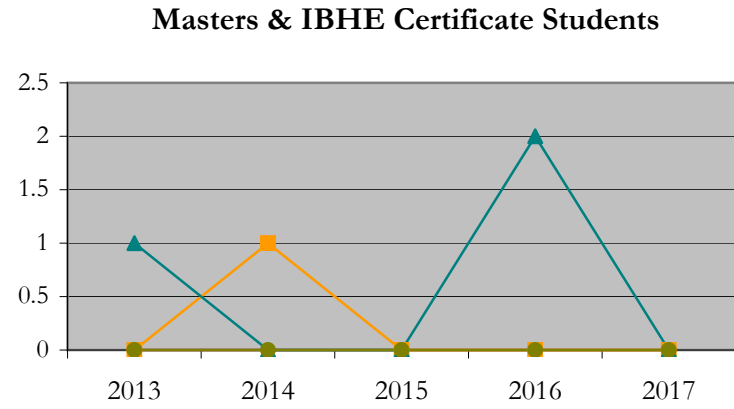
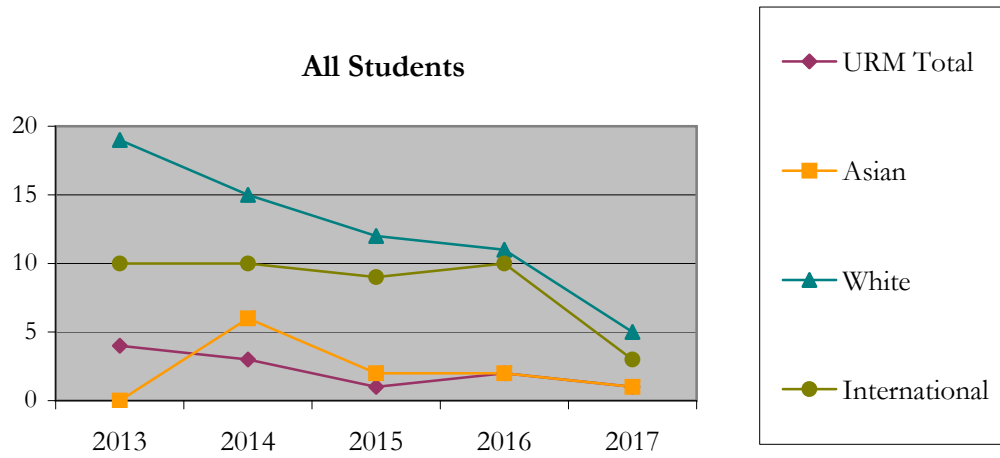
Fall 2013 - Fall 2017

		Total	Under Represented Minorities (URM)								Asian		Native Hawaiian or Pacific Islander		White		Two or More Races		International		Not Reported
			American Indian or Alaska Native		Black or African American		Hispanic / Latino		URM Total												
			Count	%	Count	%	Count	%	Count	%											
All	2013	33	0	0.0	1	3.0	3	9.1	4	12.1	0	0.0	0	0.0	19	57.6	0	0.0	10	30.3	0
	2014	37	0	0.0	1	2.7	2	5.4	3	8.1	6	16.2	0	0.0	15	40.5	1	2.7	10	27.0	2
	2015	25	0	0.0	1	4.0	0	0.0	1	4.0	2	8.0	0	0.0	12	48.0	1	4.0	9	36.0	0
	2016	26	0	0.0	1	3.8	1	3.8	2	7.7	2	7.7	0	0.0	11	42.3	1	3.8	10	38.5	0
	2017	10	0	0.0	0	0.0	1	10.0	1	10.0	1	10.0	0	0.0	5	50.0	0	0.0	3	30.0	0
Masters & IBHE Certificate	2013	1	0	0.0	0	0.0	0	0.0	0	0.0	0	0.0	0	0.0	1	100.0	0	0.0	0	0.0	0
	2014	1	0	0.0	0	0.0	0	0.0	0	0.0	1	100.0	0	0.0	0	0.0	0	0.0	0	0.0	0
	2015	0	0	0.0	0	0.0	0	0.0	0	0.0	0	0.0	0	0.0	0	0.0	0	0.0	0	0.0	0
	2016	2	0	0.0	0	0.0	0	0.0	0	0.0	0	0.0	0	0.0	2	100.0	0	0.0	0	0.0	0
	2017	0	0	0.0	0	0.0	0	0.0	0	0.0	0	0.0	0	0.0	0	0.0	0	0.0	0	0.0	0
Doctorate	2013	32	0	0.0	1	3.1	3	9.4	4	12.5	0	0.0	0	0.0	18	56.3	0	0.0	10	31.3	0
	2014	36	0	0.0	1	2.8	2	5.6	3	8.3	5	13.9	0	0.0	15	41.7	1	2.8	10	27.8	2
	2015	25	0	0.0	1	4.0	0	0.0	1	4.0	2	8.0	0	0.0	12	48.0	1	4.0	9	36.0	0
	2016	24	0	0.0	1	4.2	1	4.2	2	8.3	2	8.3	0	0.0	9	37.5	1	4.2	10	41.7	0
	2017	10	0	0.0	0	0.0	1	10.0	1	10.0	1	10.0	0	0.0	5	50.0	0	0.0	3	30.0	0
Non-Degree & Campus Certificate	2013	0	0	0.0	0	0.0	0	0.0	0	0.0	0	0.0	0	0.0	0	0.0	0	0.0	0	0.0	0
	2014	0	0	0.0	0	0.0	0	0.0	0	0.0	0	0.0	0	0.0	0	0.0	0	0.0	0	0.0	0
	2015	0	0	0.0	0	0.0	0	0.0	0	0.0	0	0.0	0	0.0	0	0.0	0	0.0	0	0.0	0
	2016	0	0	0.0	0	0.0	0	0.0	0	0.0	0	0.0	0	0.0	0	0.0	0	0.0	0	0.0	0
	2017	0	0	0.0	0	0.0	0	0.0	0	0.0	0	0.0	0	0.0	0	0.0	0	0.0	0	0.0	0

Note: URM stands for Under-Represented Minority and includes American Indian or Alaska Native; Black or African-American; Hispanic / Latino race/ethnicity groups

Applications - Admitted by Race/Ethnicity

Biological Sciences
Fall 2013 - Fall 2017



Notes: 1) URM stands for Under-Represented Minority and includes American Indian or Alaska Native; Black or African-American; Hispanic / Latino race/ethnicity groups
2) Individual URM groups, Native Hawaiian Pacific Islander, Two or More Races, and Other race/ethnicity categories left off this charts due to relatively low numbers

**Enrollment - New
by Race/Ethnicity**

Biological Sciences

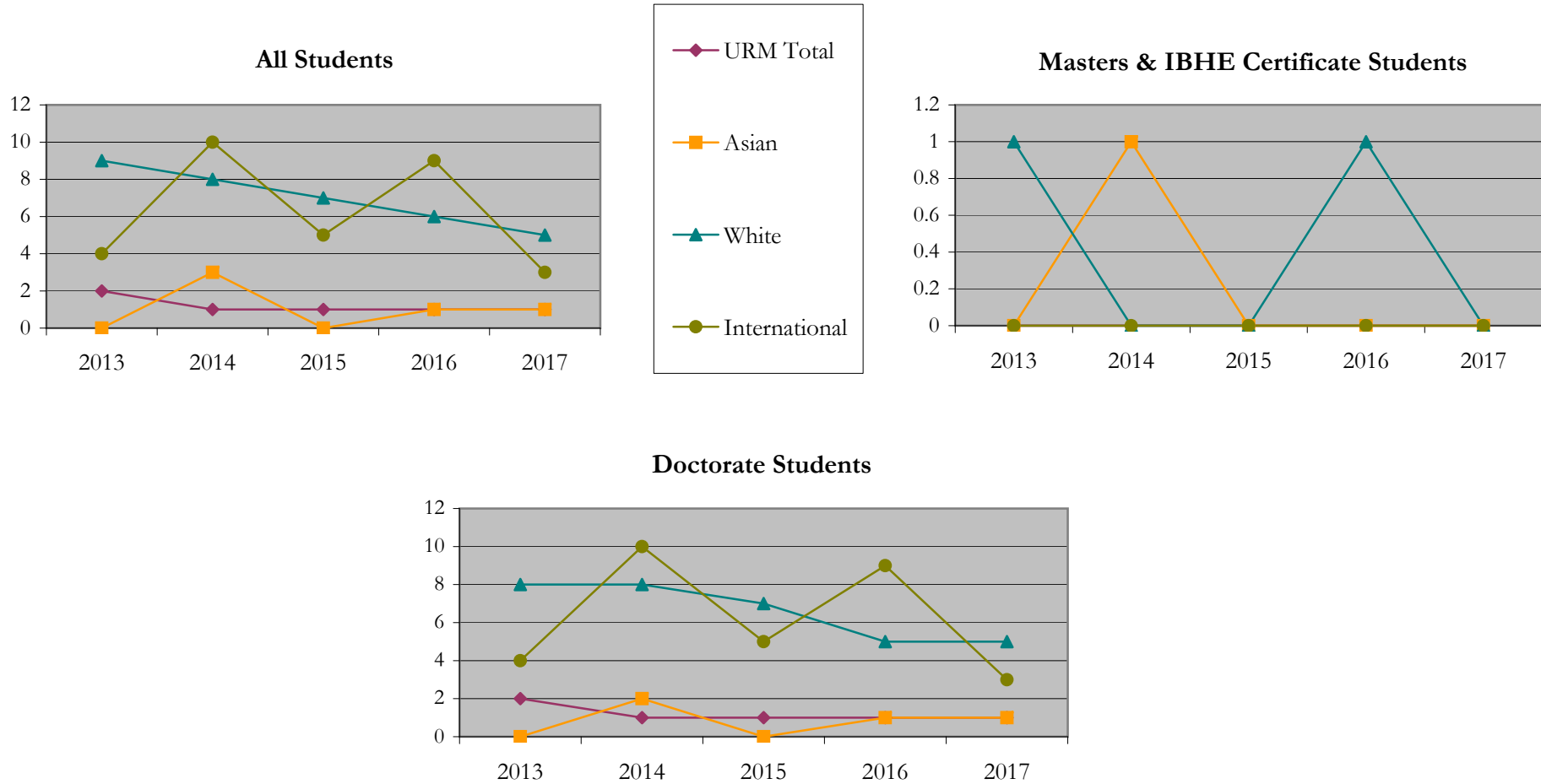
Fall 2013 - Fall 2017

		Total	Under Represented Minorities (URM)								Asian		Native Hawaiian or Pacific Islander		White		Two or More Races		International		Not Reported
			American Indian or Alaska Native		Black or African American		Hispanic / Latino		URM Total												
			Count	%	Count	%	Count	%	Count	%											
All	2013	15	0	0.0	0	0.0	2	13.3	2	13.3	0	0.0	0	0.0	9	60.0	0	0.0	4	26.7	0
	2014	24	0	0.0	1	4.2	0	0.0	1	4.2	3	12.5	0	0.0	8	33.3	1	4.2	10	41.7	1
	2015	13	0	0.0	1	7.7	0	0.0	1	7.7	0	0.0	0	0.0	7	53.8	0	0.0	5	38.5	0
	2016	18	0	0.0	0	0.0	1	5.6	1	5.6	1	5.6	0	0.0	6	33.3	1	5.6	9	50.0	0
	2017	10	0	0.0	0	0.0	1	10.0	1	10.0	1	10.0	0	0.0	5	50.0	0	0.0	3	30.0	0
Masters & IBHE Certificate	2013	1	0	0.0	0	0.0	0	0.0	0	0.0	0	0.0	0	0.0	1	100.0	0	0.0	0	0.0	0
	2014	1	0	0.0	0	0.0	0	0.0	0	0.0	1	100.0	0	0.0	0	0.0	0	0.0	0	0.0	0
	2015	0	0	0.0	0	0.0	0	0.0	0	0.0	0	0.0	0	0.0	0	0.0	0	0.0	0	0.0	0
	2016	1	0	0.0	0	0.0	0	0.0	0	0.0	0	0.0	0	0.0	1	100.0	0	0.0	0	0.0	0
	2017	0	0	0.0	0	0.0	0	0.0	0	0.0	0	0.0	0	0.0	0	0.0	0	0.0	0	0.0	0
Doctorate	2013	14	0	0.0	0	0.0	2	14.3	2	14.3	0	0.0	0	0.0	8	57.1	0	0.0	4	28.6	0
	2014	23	0	0.0	1	4.3	0	0.0	1	4.3	2	8.7	0	0.0	8	34.8	1	4.3	10	43.5	1
	2015	13	0	0.0	1	7.7	0	0.0	1	7.7	0	0.0	0	0.0	7	53.8	0	0.0	5	38.5	0
	2016	17	0	0.0	0	0.0	1	5.9	1	5.9	1	5.9	0	0.0	5	29.4	1	5.9	9	52.9	0
	2017	10	0	0.0	0	0.0	1	10.0	1	10.0	1	10.0	0	0.0	5	50.0	0	0.0	3	30.0	0
Non-Degree & Campus Certificate	2013	0	0	0.0	0	0.0	0	0.0	0	0.0	0	0.0	0	0.0	0	0.0	0	0.0	0	0.0	0
	2014	0	0	0.0	0	0.0	0	0.0	0	0.0	0	0.0	0	0.0	0	0.0	0	0.0	0	0.0	0
	2015	0	0	0.0	0	0.0	0	0.0	0	0.0	0	0.0	0	0.0	0	0.0	0	0.0	0	0.0	0
	2016	0	0	0.0	0	0.0	0	0.0	0	0.0	0	0.0	0	0.0	0	0.0	0	0.0	0	0.0	0
	2017	0	0	0.0	0	0.0	0	0.0	0	0.0	0	0.0	0	0.0	0	0.0	0	0.0	0	0.0	0

Note: URM stands for Under-Represented Minority and includes American Indian or Alaska Native; Black or African-American; Hispanic / Latino race/ethnicity groups

Enrollment - New by Race/Ethnicity

Biological Sciences
Fall 2013 - Fall 2017



Notes: 1) URM stands for Under-Represented Minority and includes American Indian or Alaska Native; Black or African-American; Hispanic / Latino race/ethnicity groups

2) Individual URM groups, Native Hawaiian Pacific Islander, Two or More Races, and Other race/ethnicity categories left off this charts due to relatively low numbers

**Enrollment - Total
by Race/Ethnicity**

Biological Sciences

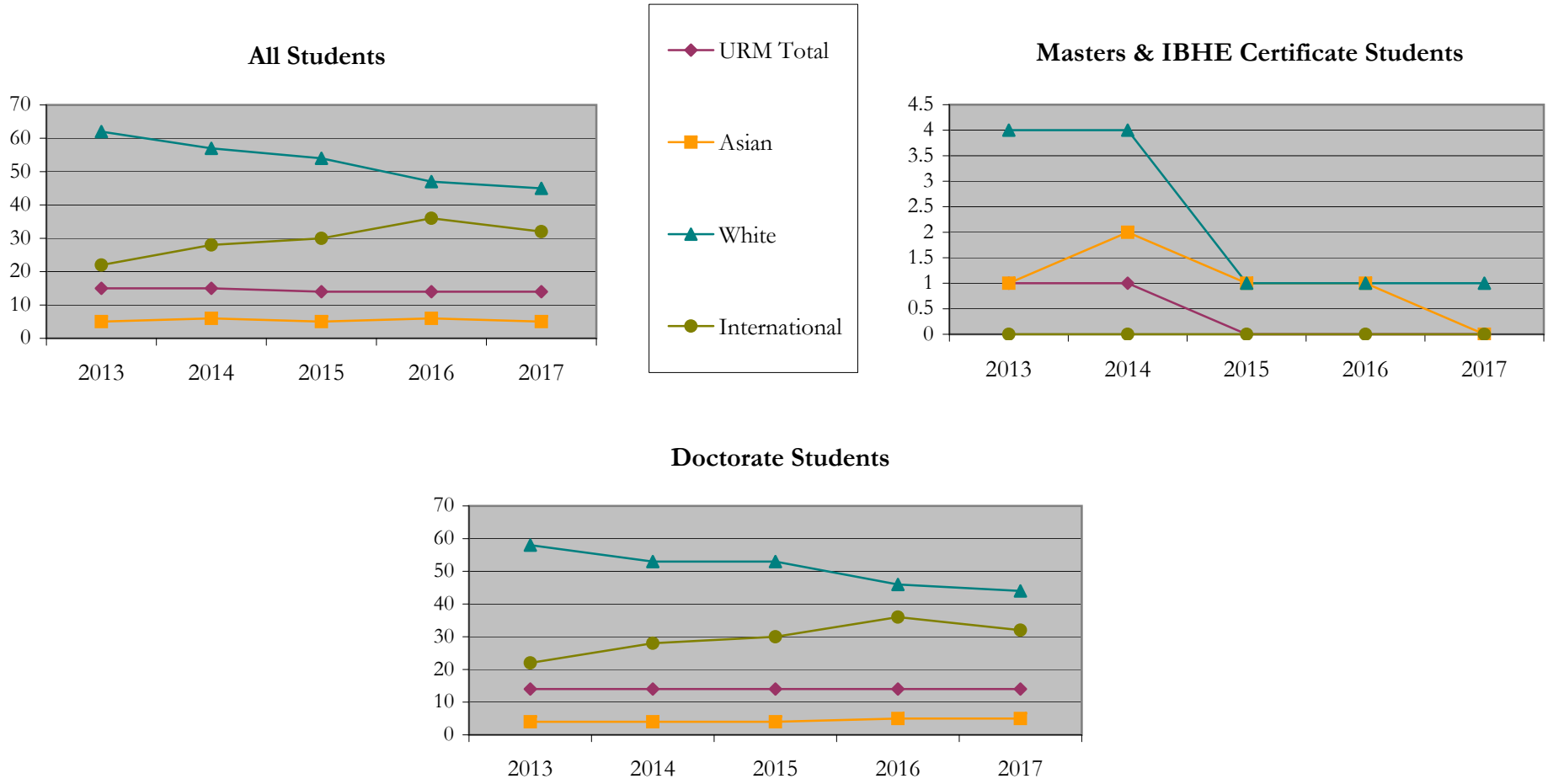
Fall 2013 - Fall 2017

		Total	Under Represented Minorities (URM)								Asian		Native Hawaiian or Pacific Islander		White		Two or More Races		International		Not Reported
			American Indian or Alaska Native		Black or African American		Hispanic / Latino		URM Total												
			Count	%	Count	%	Count	%	Count	%											
All	2013	105	0	0.0	4	3.8	11	10.5	15	14.3	5	4.8	0	0.0	62	59.0	1	1.0	22	21.0	0
	2014	109	0	0.0	5	4.6	10	9.2	15	13.8	6	5.5	0	0.0	57	52.3	2	1.8	28	25.7	1
	2015	106	0	0.0	6	5.7	8	7.5	14	13.2	5	4.7	0	0.0	54	50.9	2	1.9	30	28.3	1
	2016	106	0	0.0	6	5.7	8	7.5	14	13.2	6	5.7	0	0.0	47	44.3	3	2.8	36	34.0	0
	2017	99	0	0.0	5	5.1	9	9.1	14	14.1	5	5.1	0	0.0	45	45.5	2	2.0	32	32.3	1
Masters & IBHE Certificate	2013	6	0	0.0	0	0.0	1	16.7	1	16.7	1	16.7	0	0.0	4	66.7	0	0.0	0	0.0	0
	2014	7	0	0.0	0	0.0	1	14.3	1	14.3	2	28.6	0	0.0	4	57.1	0	0.0	0	0.0	0
	2015	2	0	0.0	0	0.0	0	0.0	0	0.0	1	50.0	0	0.0	1	50.0	0	0.0	0	0.0	0
	2016	2	0	0.0	0	0.0	0	0.0	0	0.0	1	50.0	0	0.0	1	50.0	0	0.0	0	0.0	0
	2017	1	0	0.0	0	0.0	0	0.0	0	0.0	0	0.0	0	0.0	1	100.0	0	0.0	0	0.0	0
Doctorate	2013	99	0	0.0	4	4.0	10	10.1	14	14.1	4	4.0	0	0.0	58	58.6	1	1.0	22	22.2	0
	2014	102	0	0.0	5	4.9	9	8.8	14	13.7	4	3.9	0	0.0	53	52.0	2	2.0	28	27.5	1
	2015	104	0	0.0	6	5.8	8	7.7	14	13.5	4	3.8	0	0.0	53	51.0	2	1.9	30	28.8	1
	2016	104	0	0.0	6	5.8	8	7.7	14	13.5	5	4.8	0	0.0	46	44.2	3	2.9	36	34.6	0
	2017	98	0	0.0	5	5.1	9	9.2	14	14.3	5	5.1	0	0.0	44	44.9	2	2.0	32	32.7	1
Non-Degree & Campus Certificate	2013	0	0	0.0	0	0.0	0	0.0	0	0.0	0	0.0	0	0.0	0	0.0	0	0.0	0	0.0	0
	2014	0	0	0.0	0	0.0	0	0.0	0	0.0	0	0.0	0	0.0	0	0.0	0	0.0	0	0.0	0
	2015	0	0	0.0	0	0.0	0	0.0	0	0.0	0	0.0	0	0.0	0	0.0	0	0.0	0	0.0	0
	2016	0	0	0.0	0	0.0	0	0.0	0	0.0	0	0.0	0	0.0	0	0.0	0	0.0	0	0.0	0
	2017	0	0	0.0	0	0.0	0	0.0	0	0.0	0	0.0	0	0.0	0	0.0	0	0.0	0	0.0	0

Note: URM stands for Under-Represented Minority and includes American Indian or Alaska Native; Black or African-American; Hispanic / Latino race/ethnicity groups

Enrollment - Total by Race/Ethnicity

Biological Sciences
Fall 2013 - Fall 2017



Notes: 1) URM stands for Under-Represented Minority and includes American Indian or Alaska Native; Black or African-American; Hispanic / Latino race/ethnicity groups
 2) Individual URM groups, Native Hawaiian Pacific Islander, Two or More Races, and Other race/ethnicity categories left off this charts due to relatively low numbers

Enrollment

by Student Type, Enrollment Time, and Gender

Biological Sciences

Fall 2013 - Fall 2017

		Total	New		Continuing		Male		Female		Gender Not Reported	Part-time		Full-time	
			Count	%	Count	%	Count	%	Count	%		Count	%	Count	%
All	2013	105	15	14.3	90	85.7	38	36.2	67	63.8	0	5	4.8	100	95.2
	2014	109	24	22.0	85	78.0	44	40.4	65	59.6	0	10	9.2	99	90.8
	2015	106	13	12.3	93	87.7	39	36.8	67	63.2	0	9	8.5	97	91.5
	2016	106	18	17.0	88	83.0	41	38.7	65	61.3	0	3	2.8	103	97.2
	2017	99	10	10.1	89	89.9	41	41.4	58	58.6	0	1	1.0	98	99.0
Masters & IBHE Certificate	2013	6	1	16.7	5	83.3	1	16.7	5	83.3	0	0	0.0	6	100.0
	2014	7	1	14.3	6	85.7	1	14.3	6	85.7	0	0	0.0	7	100.0
	2015	2	0	0.0	2	100.0	0	0.0	2	100.0	0	1	50.0	1	50.0
	2016	2	1	50.0	1	50.0	0	0.0	2	100.0	0	0	0.0	2	100.0
	2017	1	0	0.0	1	100.0	0	0.0	1	100.0	0	0	0.0	1	100.0
Doctorate	2013	99	14	14.1	85	85.9	37	37.4	62	62.6	0	5	5.1	94	94.9
	2014	102	23	22.5	79	77.5	43	42.2	59	57.8	0	10	9.8	92	90.2
	2015	104	13	12.5	91	87.5	39	37.5	65	62.5	0	8	7.7	96	92.3
	2016	104	17	16.3	87	83.7	41	39.4	63	60.6	0	3	2.9	101	97.1
	2017	98	10	10.2	88	89.8	41	41.8	57	58.2	0	1	1.0	97	99.0
Non-Degree & Campus Certificate	2013	0	0	0.0	0	0.0	0	0.0	0	0.0	0	0	0.0	0	0.0
	2014	0	0	0.0	0	0.0	0	0.0	0	0.0	0	0	0.0	0	0.0
	2015	0	0	0.0	0	0.0	0	0.0	0	0.0	0	0	0.0	0	0.0
	2016	0	0	0.0	0	0.0	0	0.0	0	0.0	0	0	0.0	0	0.0
	2017	0	0	0.0	0	0.0	0	0.0	0	0.0	0	0	0.0	0	0.0

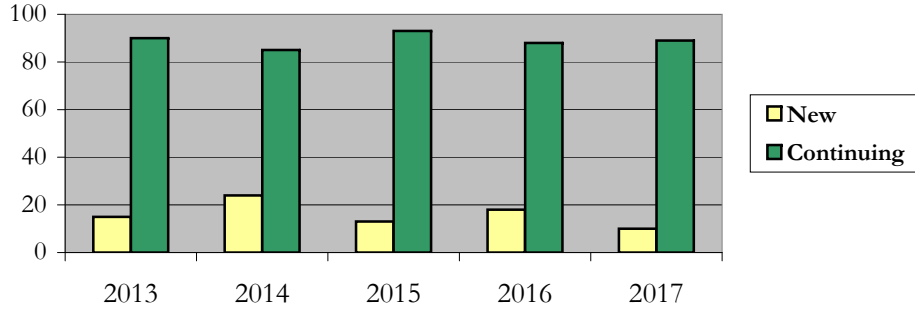
Enrollment

by Student Type, Enrollment Time, and Gender (All Students)

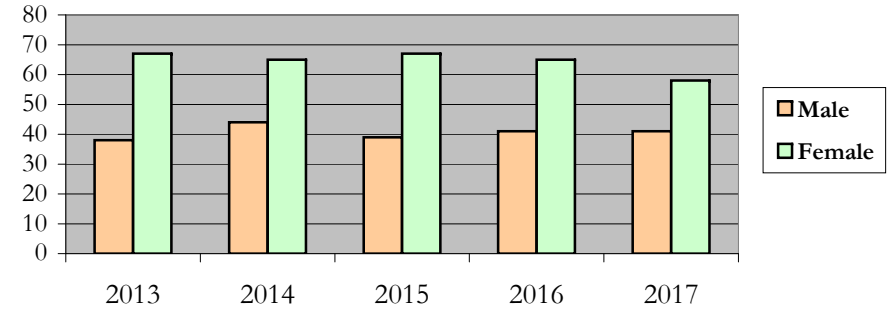
Biological Sciences

Fall 2013 - Fall 2017

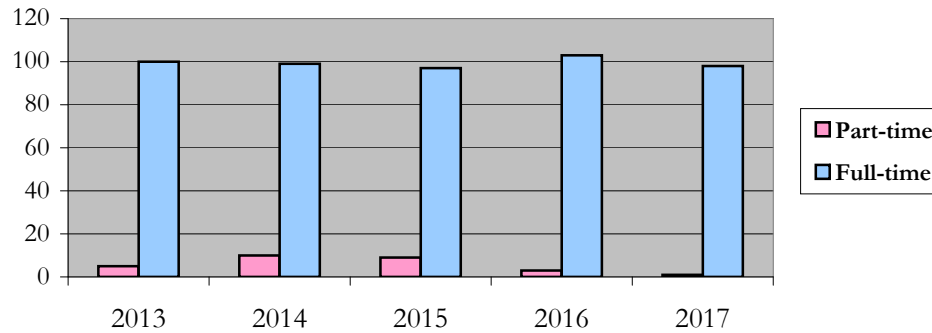
New and Continuing Enrollment



Enrollment by Gender



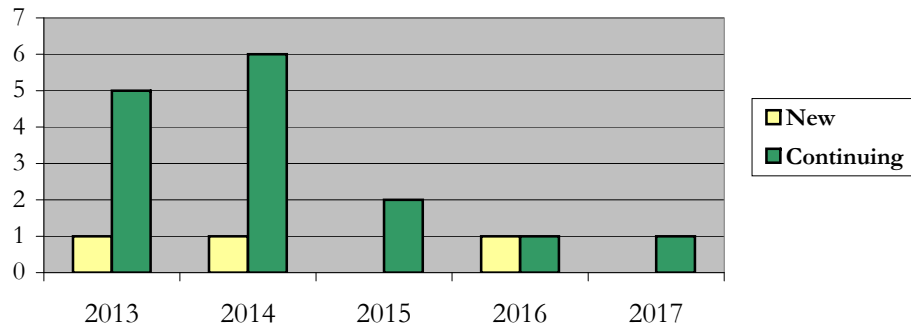
Enrollment by Student Enrollment Time



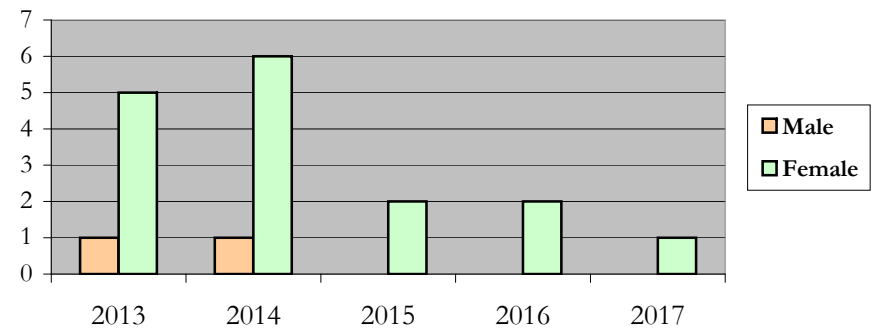
Enrollment
by Student Type, Enrollment Time, and Gender (Master's Students)

Biological Sciences
 Fall 2013 - Fall 2017

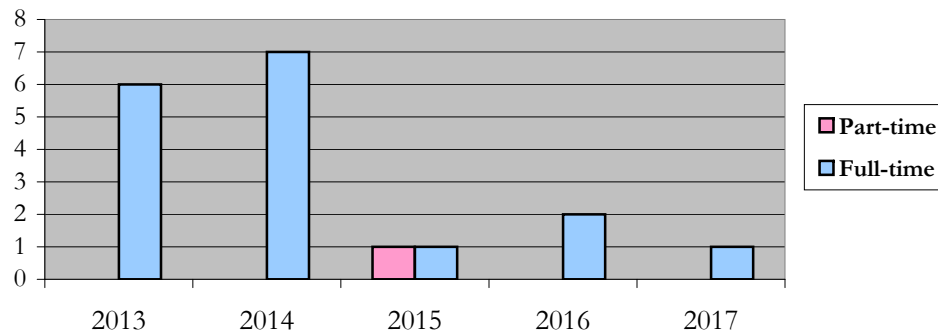
New and Continuing Enrollment



Enrollment by Gender



Enrollment by Student Enrollment Time



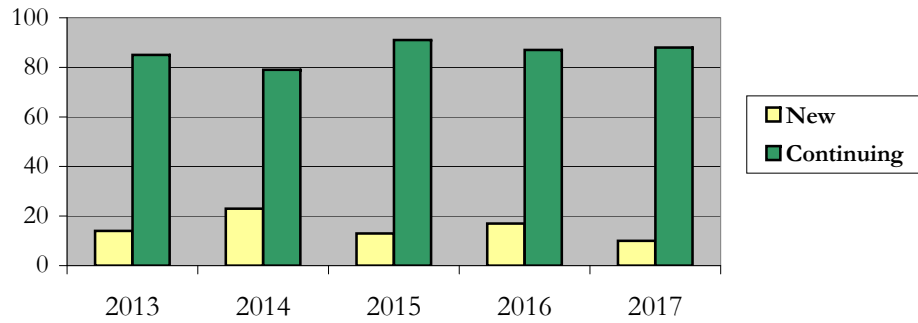
Enrollment

by Student Type, Enrollment Time, and Gender (Doctorate Students)

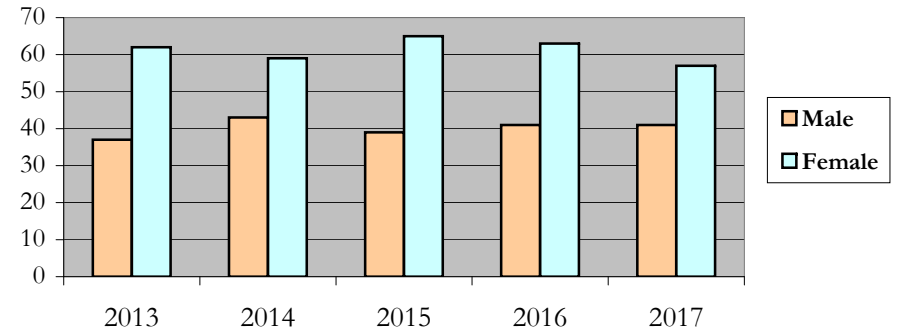
Biological Sciences

Fall 2013 - Fall 2017

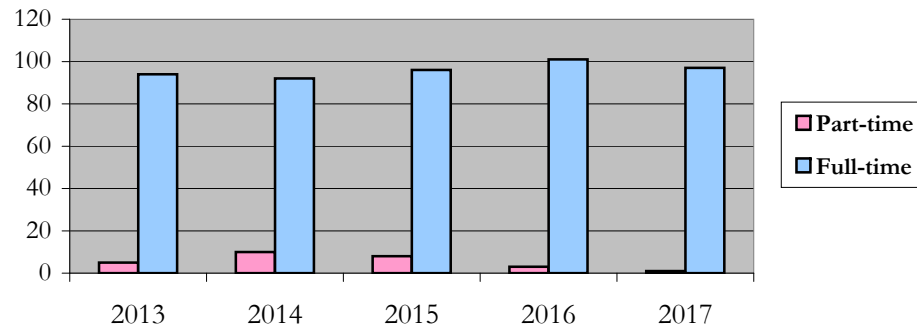
New and Continuing Enrollment



Enrollment by Gender



Enrollment by Student Enrollment Time



Degrees Conferred by Race/Ethnicity

Biological Sciences

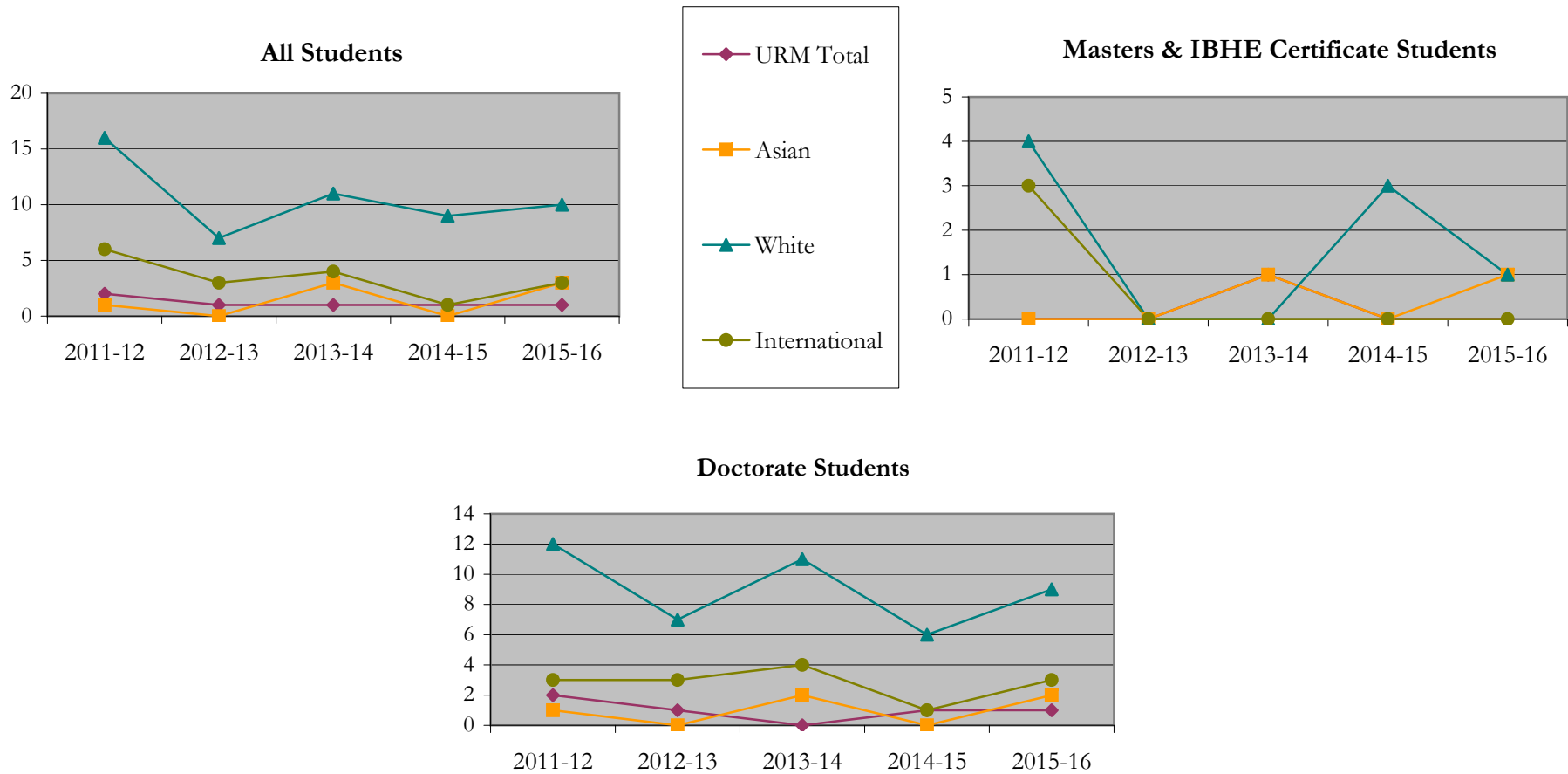
Fall 2013 - Fall 2017

		Total	Under Represented Minorities (URM)								Asian	Native Hawaiian or Pacific Islander		White		Two or More Races		International		Not Reported		
			American Indian or Alaska Native		Black or African American		Hispanic / Latino		URM Total			Count	%	Count	%	Count	%	Count	%		Count	%
			Count	%	Count	%	Count	%	Count	%												
All	2012 - 13	25	0	0.0	1	4.0	1	4.0	2	8.0	1	4.0	0	0.0	16	64.0	0	0.0	6	24.0	0	
	2013 - 14	11	0	0.0	0	0.0	1	9.1	1	9.1	0	0.0	0	0.0	7	63.6	0	0.0	3	27.3	0	
	2014 - 15	19	0	0.0	0	0.0	1	5.3	1	5.3	3	15.8	0	0.0	11	57.9	0	0.0	4	21.1	0	
	2015 - 16	11	0	0.0	0	0.0	1	9.1	1	9.1	0	0.0	0	0.0	9	81.8	0	0.0	1	9.1	0	
	2016 - 17	19	0	0.0	1	5.3	0	0.0	1	5.3	3	15.8	0	0.0	10	52.6	2	10.5	3	15.8	0	
Masters & IBHE Certificate	2012 - 13	7	0	0.0	0	0.0	0	0.0	0	0.0	0	0.0	0	0.0	4	57.1	0	0.0	3	42.9	0	
	2013 - 14	0	0	0.0	0	0.0	0	0.0	0	0.0	0	0.0	0	0.0	0	0.0	0	0.0	0	0.0	0	
	2014 - 15	2	0	0.0	0	0.0	1	50.0	1	50.0	1	50.0	0	0.0	0	0.0	0	0.0	0	0.0	0	
	2015 - 16	3	0	0.0	0	0.0	0	0.0	0	0.0	0	0.0	0	0.0	3	100.0	0	0.0	0	0.0	0	
	2016 - 17	2	0	0.0	0	0.0	0	0.0	0	0.0	1	50.0	0	0.0	1	50.0	0	0.0	0	0.0	0	
Doctorate	2012 - 13	18	0	0.0	1	5.6	1	5.6	2	11.1	1	5.6	0	0.0	12	66.7	0	0.0	3	16.7	0	
	2013 - 14	11	0	0.0	0	0.0	1	9.1	1	9.1	0	0.0	0	0.0	7	63.6	0	0.0	3	27.3	0	
	2014 - 15	17	0	0.0	0	0.0	0	0.0	0	0.0	2	11.8	0	0.0	11	64.7	0	0.0	4	23.5	0	
	2015 - 16	8	0	0.0	0	0.0	1	12.5	1	12.5	0	0.0	0	0.0	6	75.0	0	0.0	1	12.5	0	
	2016 - 17	17	0	0.0	1	5.9	0	0.0	1	5.9	2	11.8	0	0.0	9	52.9	2	11.8	3	17.6	0	
Non-Degree & Campus Certificate	2012 - 13	0	0	0.0	0	0.0	0	0.0	0	0.0	0	0.0	0	0.0	0	0.0	0	0.0	0	0.0	0	
	2013 - 14	0	0	0.0	0	0.0	0	0.0	0	0.0	0	0.0	0	0.0	0	0.0	0	0.0	0	0.0	0	
	2014 - 15	0	0	0.0	0	0.0	0	0.0	0	0.0	0	0.0	0	0.0	0	0.0	0	0.0	0	0.0	0	
	2015 - 16	0	0	0.0	0	0.0	0	0.0	0	0.0	0	0.0	0	0.0	0	0.0	0	0.0	0	0.0	0	
	2016 - 17	0	0	0.0	0	0.0	0	0.0	0	0.0	0	0.0	0	0.0	0	0.0	0	0.0	0	0.0	0	

Note: Each row represents a fiscal year, beginning with Summer term and ending with Spring.

Degrees Conferred by Race/Ethnicity

Biological Sciences
Fall 2013 - Fall 2017



Notes: 1) URM stands for Under-Represented Minority and includes American Indian or Alaska Native; Black or African-American; Hispanic / Latino race/ethnicity groups

2) Individual URM groups, Native Hawaiian Pacific Islander, Two or More Races, and Other race/ethnicity categories left off this charts due to relatively low numbers

Degrees Conferred

by Gender

Biological Sciences

Fall 2013 - Fall 2017

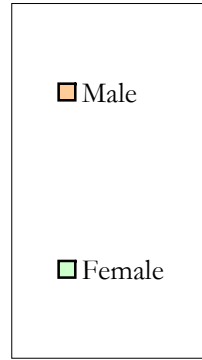
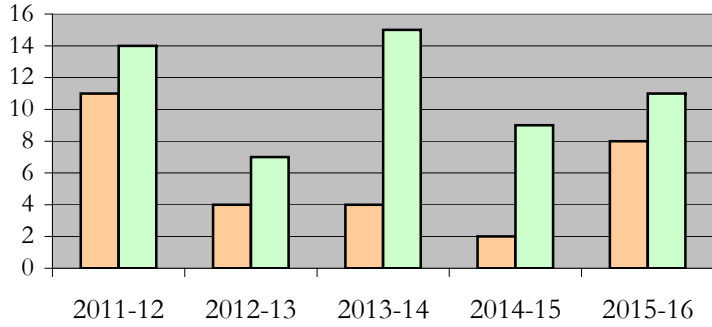
		Total	Male		Female		Not Reported
			Count	%	Count	%	
All	2012 - 13	25	11	44.0	14	56.0	0
	2013 - 14	11	4	36.4	7	63.6	0
	2014 - 15	19	4	21.1	15	78.9	0
	2015 - 16	11	2	18.2	9	81.8	0
	2016 - 17	19	8	42.1	11	57.9	0
Masters & IBHE Certificate	2012 - 13	7	1	14.3	6	85.7	0
	2013 - 14	0	0	0.0	0	0.0	0
	2014 - 15	2	0	0.0	2	100.0	0
	2015 - 16	3	0	0.0	3	100.0	0
	2016 - 17	2	1	50.0	1	50.0	0
Doctorate	2012 - 13	18	10	55.6	8	44.4	0
	2013 - 14	11	4	36.4	7	63.6	0
	2014 - 15	17	4	23.5	13	76.5	0
	2015 - 16	8	2	25.0	6	75.0	0
	2016 - 17	17	7	41.2	10	58.8	0
Campus Certificates	2012 - 13	0	0	0.0	0	0.0	0
	2013 - 14	0	0	0.0	0	0.0	0
	2014 - 15	0	0	0.0	0	0.0	0
	2015 - 16	0	0	0.0	0	0.0	0
	2016 - 17	0	0	0.0	0	0.0	0

Note: Each row represents a fiscal year, beginning with Summer term and ending with Spring.

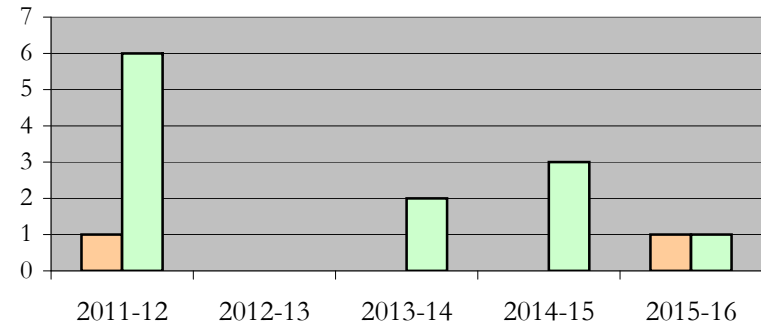
Degrees Conferred by Gender

Biological Sciences
Fall 2013 - Fall 2017

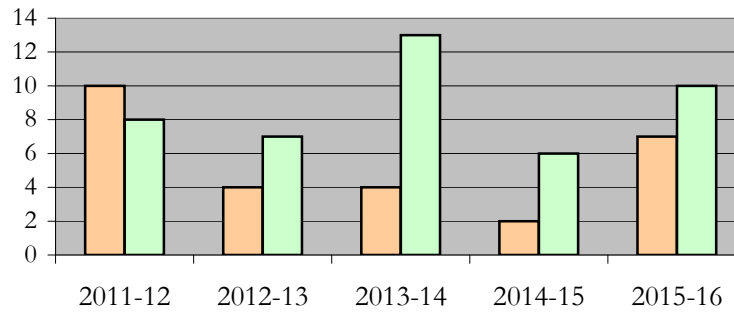
All Students



Masters & IBHE Certificate Students



Doctorate Students



Appendix A

Biological Sciences

Fall 2013 - Fall 2017

List of program codes included in this document

20FS1072MS

20FS1072PHD

Notes: 1) Program codes are sorted by alphabetical order in column-wise fashion

2) Program codes highlighted in yellow did not have applications, enrollment, nor degrees conferred in the covered period