

Matriculation

Diversity Pipeline

Anthropology

Fall 2013 - Fall 2017

	Fall Semester Year	Applied					Admitted					Non-URM Admitted to Applied Yield %	URM Admitted to Applied Yield %	New Enrollment					Non-URM Enrolled to Admitted Yield %	URM Enrolled to Admitted Yield %	Total Enrollment				
		Grand Total	Non-URM Total		URM Total		Grand Total	Non-URM Total		URM Total				Grand Total	Non-URM Total		URM Total				Grand Total	Non-URM Total		URM Total	
			Count	%	Count	%		Count	%	Count	%				Count	%	Count	%				Count	%	Count	%
All	2013	93	84	90.3%	9	9.7%	6	5	83.3%	1	16.7%	6.0%	11.1%	5	4	80.0%	1	20.0%	80.0%	100.0%	53	45	84.9%	8	15.1%
	2014	72	63	87.5%	9	12.5%	14	12	85.7%	2	14.3%	19.0%	22.2%	6	6	100.0%	0	0.0%	50.0%	0.0%	53	46	86.8%	7	13.2%
	2015	46	41	89.1%	5	10.9%	11	10	90.9%	1	9.1%	24.4%	20.0%	7	6	85.7%	1	14.3%	60.0%	100.0%	50	43	86.0%	7	14.0%
	2016	54	47	87.0%	7	13.0%	9	8	88.9%	1	11.1%	17.0%	14.3%	6	5	83.3%	1	16.7%	62.5%	100.0%	48	40	83.3%	8	16.7%
	2017	47	40	85.1%	7	14.9%	7	6	85.7%	1	14.3%	15.0%	14.3%	5	4	80.0%	1	20.0%	66.7%	100.0%	48	39	81.3%	9	18.8%
	Average	62	55	88.1%	7	11.9%	9	8	87.2%	1	12.8%	14.9%	16.2%	6	5	86.2%	1	13.8%	61.0%	66.7%	50	43	84.5%	8	15.5%
Masters & IBHE Certificate	2013	46	39	84.8%	7	15.2%	4	3	75.0%	1	25.0%	7.7%	14.3%	4	3	75.0%	1	25.0%	100.0%	100.0%	17	15	88.2%	2	11.8%
	2014	41	39	95.1%	2	4.9%	7	7	100.0%	0	0.0%	17.9%	0.0%	4	4	100.0%	0	0.0%	57.1%	0.0%	9	8	88.9%	1	11.1%
	2015	24	21	87.5%	3	12.5%	4	4	100.0%	0	0.0%	19.0%	0.0%	3	3	100.0%	0	0.0%	75.0%	0.0%	8	8	100.0%	0	0.0%
	2016	26	24	92.3%	2	7.7%	5	5	100.0%	0	0.0%	20.8%	0.0%	4	4	100.0%	0	0.0%	80.0%	0.0%	9	9	100.0%	0	0.0%
	2017	22	17	77.3%	5	22.7%	1	1	100.0%	0	0.0%	5.9%	0.0%	0	0	0.0%	0	0.0%	0.0%	0.0%	4	4	100.0%	0	0.0%
	Average	32	28	88.1%	4	11.9%	4	4	95.2%	0	4.8%	14.3%	5.3%	3	3	93.3%	0	6.7%	70.0%	100.0%	9	9	93.6%	1	6.4%
Doctorate	2013	47	45	95.7%	2	4.3%	2	2	100.0%	0	0.0%	4.4%	0.0%	1	1	100.0%	0	0.0%	50.0%	0.0%	36	30	83.3%	6	16.7%
	2014	31	24	77.4%	7	22.6%	7	5	71.4%	2	28.6%	20.8%	28.6%	2	2	100.0%	0	0.0%	40.0%	0.0%	44	38	86.4%	6	13.6%
	2015	22	20	90.9%	2	9.1%	7	6	85.7%	1	14.3%	30.0%	50.0%	4	3	75.0%	1	25.0%	50.0%	100.0%	42	35	83.3%	7	16.7%
	2016	28	23	82.1%	5	17.9%	4	3	75.0%	1	25.0%	13.0%	20.0%	2	1	50.0%	1	50.0%	33.3%	100.0%	39	31	79.5%	8	20.5%
	2017	25	23	92.0%	2	8.0%	6	5	83.3%	1	16.7%	21.7%	50.0%	5	4	80.0%	1	20.0%	80.0%	100.0%	44	35	79.5%	9	20.5%
	Average	31	27	88.2%	4	11.8%	5	4	80.8%	1	19.2%	15.6%	27.8%	3	2	78.6%	1	21.4%	52.4%	60.0%	41	34	82.4%	7	17.6%
Non-Degree & Campus Certificate	2013	0	0	0.0%	0	0.0%	0	0	0.0%	0	0.0%	0.0%	0.0%	0	0	0.0%	0	0.0%	0.0%	0.0%	0	0	0.0%	0	0.0%
	2014	0	0	0.0%	0	0.0%	0	0	0.0%	0	0.0%	0.0%	0.0%	0	0	0.0%	0	0.0%	0.0%	0.0%	0	0	0.0%	0	0.0%
	2015	0	0	0.0%	0	0.0%	0	0	0.0%	0	0.0%	0.0%	0.0%	0	0	0.0%	0	0.0%	0.0%	0.0%	0	0	0.0%	0	0.0%
	2016	0	0	0.0%	0	0.0%	0	0	0.0%	0	0.0%	0.0%	0.0%	0	0	0.0%	0	0.0%	0.0%	0.0%	0	0	0.0%	0	0.0%
	2017	0	0	0.0%	0	0.0%	0	0	0.0%	0	0.0%	0.0%	0.0%	0	0	0.0%	0	0.0%	0.0%	0.0%	0	0	0.0%	0	0.0%
	Average	0	0	0.0%	0	0.0%	0	0	0.0%	0	0.0%	0.0%	0.0%	0	0	0.0%	0	0.0%	0.0%	0.0%	0	0	0.0%	0	0.0%

Note: URM stands for Under-Represented Minority and includes American Indian or Alaska Native; Black or African-American; Hispanic / Latino race/ethnicity groups

Applications - Total by Race/Ethnicity

Anthropology

Fall 2013 - Fall 2017

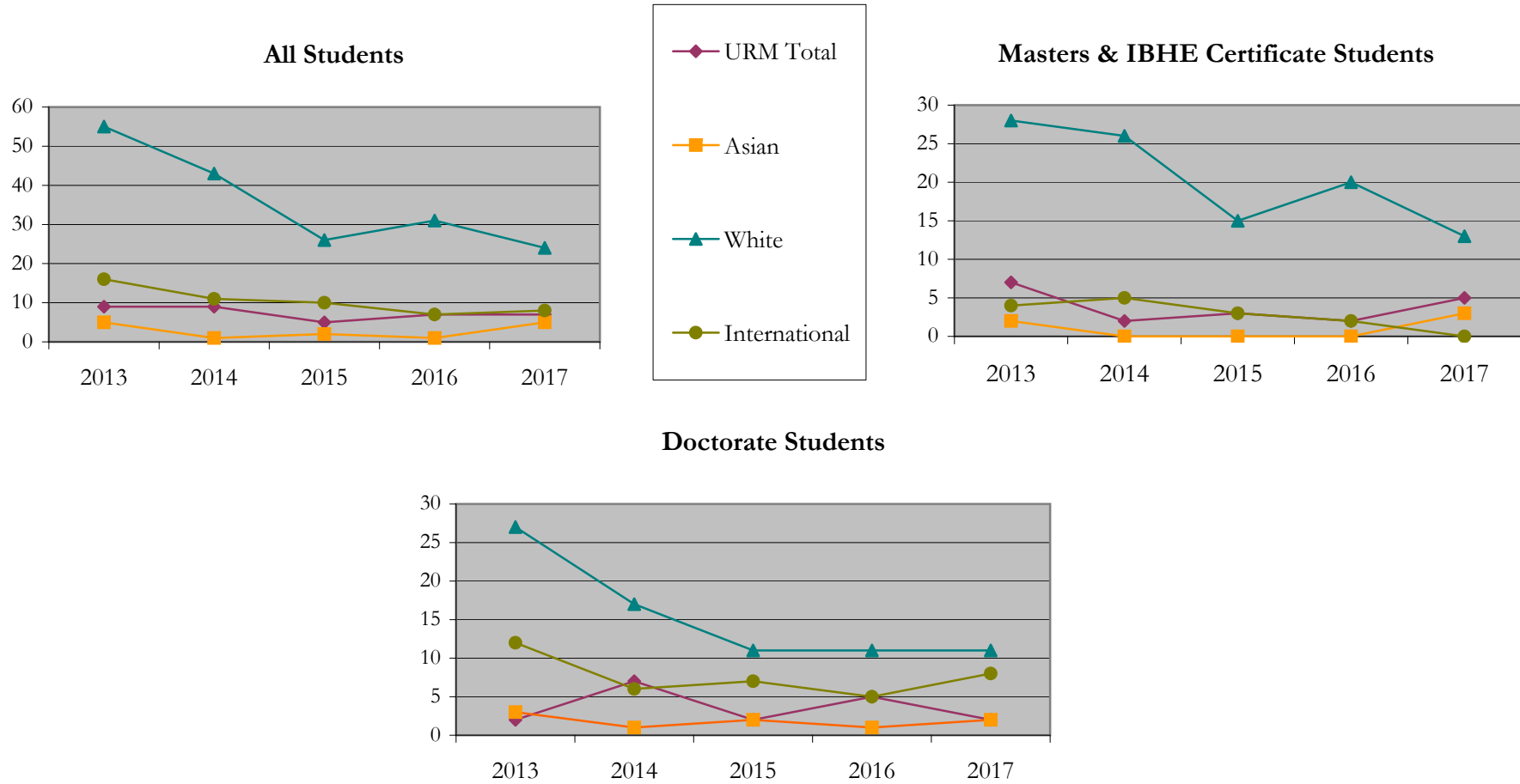
		Total	Under Represented Minorities (URM)																		
			American Indian or Alaska Native		Black or African American		Hispanic / Latino		URM Total		Asian		Native Hawaiian or Pacific Islander		White		Two or More Races		International		Not Reported
			Count	%	Count	%	Count	%	Count	%	Count	%	Count	%	Count	%	Count	%	Count	%	Count
All	2013	93	0	0.0	1	1.1	8	8.6	9	9.7	5	5.4	1	1.1	55	59.1	2	2.2	16	17.2	5
	2014	72	0	0.0	1	1.4	8	11.1	9	12.5	1	1.4	0	0.0	43	59.7	3	4.2	11	15.3	5
	2015	46	0	0.0	0	0.0	5	10.9	5	10.9	2	4.3	0	0.0	26	56.5	2	4.3	10	21.7	1
	2016	54	1	1.9	2	3.7	4	7.4	7	13.0	1	1.9	0	0.0	31	57.4	5	9.3	7	13.0	3
	2017	47	2	4.3	0	0.0	5	10.6	7	14.9	5	10.6	0	0.0	24	51.1	3	6.4	8	17.0	0
Masters & IBHE Certificate	2013	46	0	0.0	1	2.2	6	13.0	7	15.2	2	4.3	1	2.2	28	60.9	2	4.3	4	8.7	2
	2014	41	0	0.0	0	0.0	2	4.9	2	4.9	0	0.0	0	0.0	26	63.4	3	7.3	5	12.2	5
	2015	24	0	0.0	0	0.0	3	12.5	3	12.5	0	0.0	0	0.0	15	62.5	2	8.3	3	12.5	1
	2016	26	0	0.0	0	0.0	2	7.7	2	7.7	0	0.0	0	0.0	20	76.9	2	7.7	2	7.7	0
	2017	22	1	4.5	0	0.0	4	18.2	5	22.7	3	13.6	0	0.0	13	59.1	1	4.5	0	0.0	0
Doctorate	2013	47	0	0.0	0	0.0	2	4.3	2	4.3	3	6.4	0	0.0	27	57.4	0	0.0	12	25.5	3
	2014	31	0	0.0	1	3.2	6	19.4	7	22.6	1	3.2	0	0.0	17	54.8	0	0.0	6	19.4	0
	2015	22	0	0.0	0	0.0	2	9.1	2	9.1	2	9.1	0	0.0	11	50.0	0	0.0	7	31.8	0
	2016	28	1	3.6	2	7.1	2	7.1	5	17.9	1	3.6	0	0.0	11	39.3	3	10.7	5	17.9	3
	2017	25	1	4.0	0	0.0	1	4.0	2	8.0	2	8.0	0	0.0	11	44.0	2	8.0	8	32.0	0
Non-Degree & Campus Certificate	2013	0	0	0.0	0	0.0	0	0.0	0	0.0	0	0.0	0	0.0	0	0.0	0	0.0	0	0.0	0
	2014	0	0	0.0	0	0.0	0	0.0	0	0.0	0	0.0	0	0.0	0	0.0	0	0.0	0	0.0	0
	2015	0	0	0.0	0	0.0	0	0.0	0	0.0	0	0.0	0	0.0	0	0.0	0	0.0	0	0.0	0
	2016	0	0	0.0	0	0.0	0	0.0	0	0.0	0	0.0	0	0.0	0	0.0	0	0.0	0	0.0	0
	2017	0	0	0.0	0	0.0	0	0.0	0	0.0	0	0.0	0	0.0	0	0.0	0	0.0	0	0.0	0

Note: URM stands for Under-Represented Minority and includes American Indian or Alaska Native; Black or African-American; Hispanic / Latino race/ethnicity groups

Applications - Total by Race/Ethnicity

Anthropology

Fall 2013 - Fall 2017



Notes: 1) URM stands for Under-Represented Minority and includes American Indian or Alaska Native; Black or African-American; Hispanic / Latino race/ethnicity groups

2) Individual URM groups, Native Hawaiian Pacific Islander, Two or More Races, and Other race/ethnicity categories left off this charts due to relatively low numbers

**Applications - Admitted
by Race/Ethnicity**

Anthropology

Fall 2013 - Fall 2017

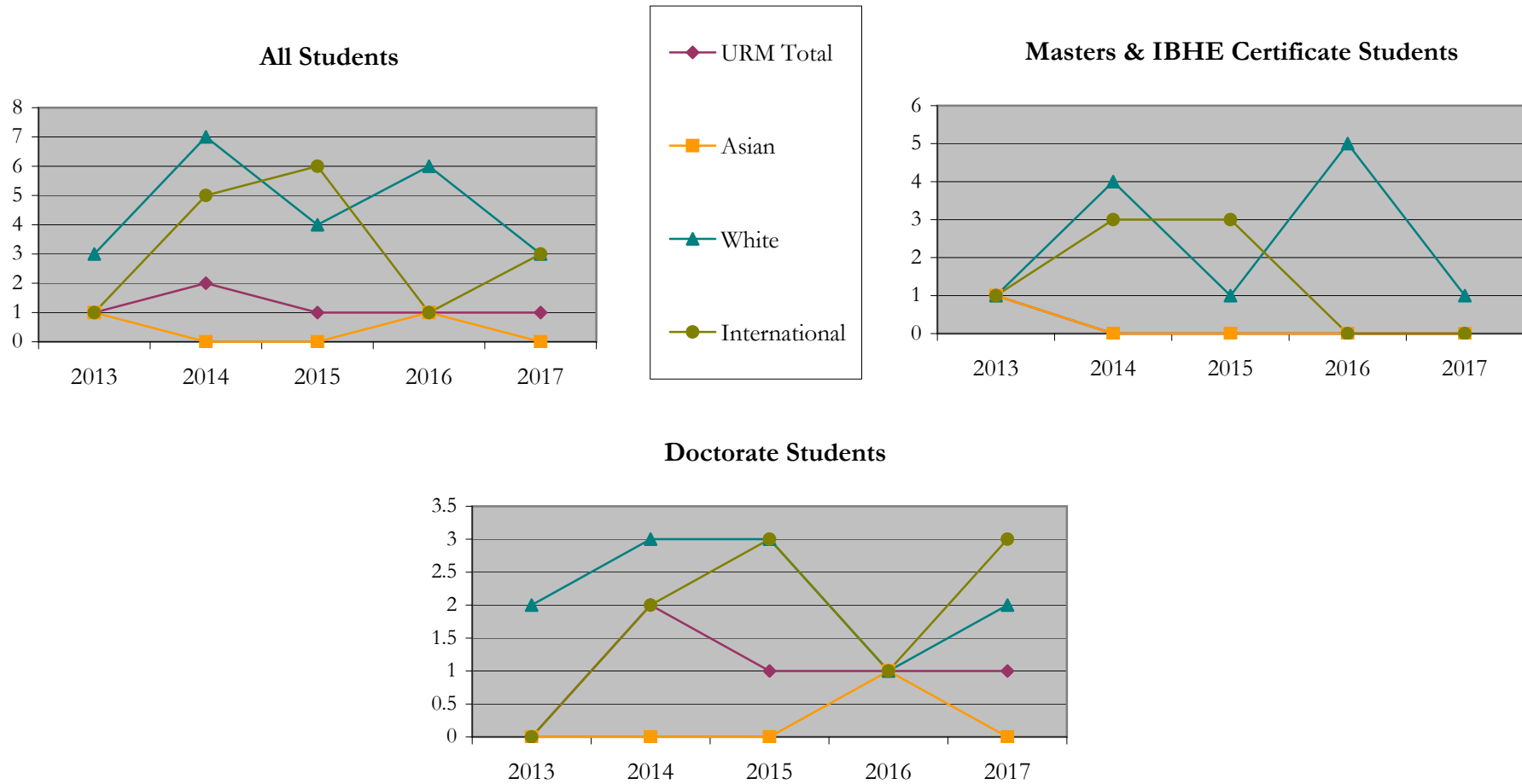
		Total	Under Represented Minorities (URM)								Asian		Native Hawaiian or Pacific Islander		White		Two or More Races		International		Not Reported
			American Indian or Alaska Native		Black or African American		Hispanic / Latino		URM Total												
			Count	%	Count	%	Count	%	Count	%											
All	2013	6	0	0.0	0	0.0	1	16.7	1	16.7	1	16.7	0	0.0	3	50.0	0	0.0	1	16.7	0
	2014	14	0	0.0	0	0.0	2	14.3	2	14.3	0	0.0	0	0.0	7	50.0	0	0.0	5	35.7	0
	2015	11	0	0.0	0	0.0	1	9.1	1	9.1	0	0.0	0	0.0	4	36.4	0	0.0	6	54.5	0
	2016	9	0	0.0	0	0.0	1	11.1	1	11.1	1	11.1	0	0.0	6	66.7	0	0.0	1	11.1	0
	2017	7	1	14.3	0	0.0	0	0.0	1	14.3	0	0.0	0	0.0	3	42.9	0	0.0	3	42.9	0
Masters & IBHE Certificate	2013	4	0	0.0	0	0.0	1	25.0	1	25.0	1	25.0	0	0.0	1	25.0	0	0.0	1	25.0	0
	2014	7	0	0.0	0	0.0	0	0.0	0	0.0	0	0.0	0	0.0	4	57.1	0	0.0	3	42.9	0
	2015	4	0	0.0	0	0.0	0	0.0	0	0.0	0	0.0	0	0.0	1	25.0	0	0.0	3	75.0	0
	2016	5	0	0.0	0	0.0	0	0.0	0	0.0	0	0.0	0	0.0	5	100.0	0	0.0	0	0.0	0
	2017	1	0	0.0	0	0.0	0	0.0	0	0.0	0	0.0	0	0.0	1	100.0	0	0.0	0	0.0	0
Doctorate	2013	2	0	0.0	0	0.0	0	0.0	0	0.0	0	0.0	0	0.0	2	100.0	0	0.0	0	0.0	0
	2014	7	0	0.0	0	0.0	2	28.6	2	28.6	0	0.0	0	0.0	3	42.9	0	0.0	2	28.6	0
	2015	7	0	0.0	0	0.0	1	14.3	1	14.3	0	0.0	0	0.0	3	42.9	0	0.0	3	42.9	0
	2016	4	0	0.0	0	0.0	1	25.0	1	25.0	1	25.0	0	0.0	1	25.0	0	0.0	1	25.0	0
	2017	6	1	16.7	0	0.0	0	0.0	1	16.7	0	0.0	0	0.0	2	33.3	0	0.0	3	50.0	0
Non-Degree & Campus Certificate	2013	0	0	0.0	0	0.0	0	0.0	0	0.0	0	0.0	0	0.0	0	0.0	0	0.0	0	0.0	0
	2014	0	0	0.0	0	0.0	0	0.0	0	0.0	0	0.0	0	0.0	0	0.0	0	0.0	0	0.0	0
	2015	0	0	0.0	0	0.0	0	0.0	0	0.0	0	0.0	0	0.0	0	0.0	0	0.0	0	0.0	0
	2016	0	0	0.0	0	0.0	0	0.0	0	0.0	0	0.0	0	0.0	0	0.0	0	0.0	0	0.0	0
	2017	0	0	0.0	0	0.0	0	0.0	0	0.0	0	0.0	0	0.0	0	0.0	0	0.0	0	0.0	0

Note: URM stands for Under-Represented Minority and includes American Indian or Alaska Native; Black or African-American; Hispanic / Latino race/ethnicity groups

Applications - Admitted by Race/Ethnicity

Anthropology

Fall 2013 - Fall 2017



Notes: 1) URM stands for Under-Represented Minority and includes American Indian or Alaska Native; Black or African-American; Hispanic / Latino race/ethnicity groups

2) Individual URM groups, Native Hawaiian Pacific Islander, Two or More Races, and Other race/ethnicity categories left off this charts due to relatively low numbers

**Enrollment - New
by Race/Ethnicity**

Anthropology

Fall 2013 - Fall 2017

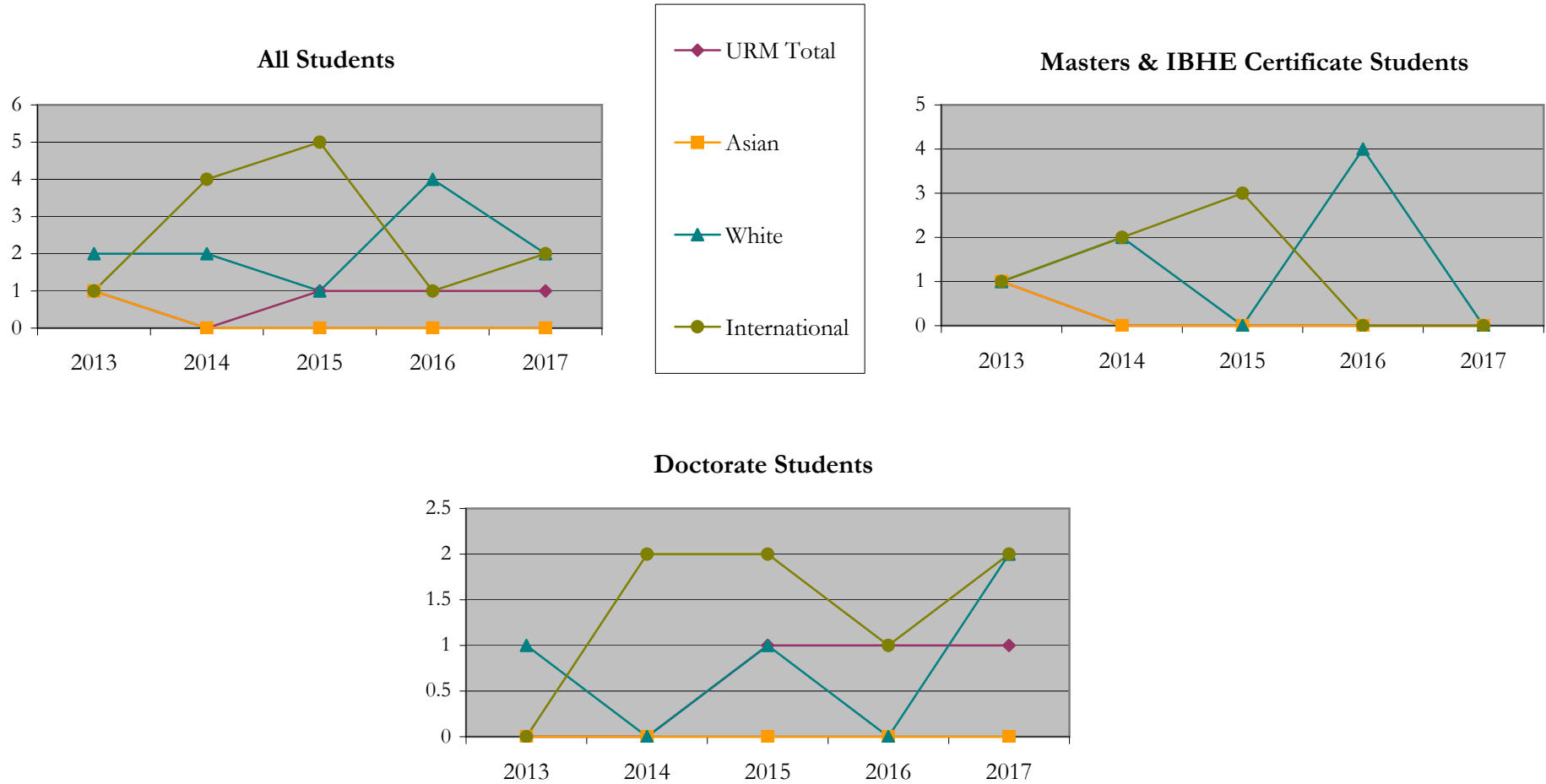
		Total	Under Represented Minorities (URM)								Asian		Native Hawaiian or Pacific Islander		White		Two or More Races		International		Not Reported
			American Indian or Alaska Native		Black or African American		Hispanic / Latino		URM Total												
			Count	%	Count	%	Count	%	Count	%											
All	2013	5	0	0.0	0	0.0	1	20.0	1	20.0	1	20.0	0	0.0	2	40.0	0	0.0	1	20.0	0
	2014	6	0	0.0	0	0.0	0	0.0	0	0.0	0	0.0	0	0.0	2	33.3	0	0.0	4	66.7	0
	2015	7	0	0.0	0	0.0	1	14.3	1	14.3	0	0.0	0	0.0	1	14.3	0	0.0	5	71.4	0
	2016	6	0	0.0	0	0.0	1	16.7	1	16.7	0	0.0	0	0.0	4	66.7	0	0.0	1	16.7	0
	2017	5	1	20.0	0	0.0	0	0.0	1	20.0	0	0.0	0	0.0	2	40.0	0	0.0	2	40.0	0
Masters & IBHE Certificate	2013	4	0	0.0	0	0.0	1	25.0	1	25.0	1	25.0	0	0.0	1	25.0	0	0.0	1	25.0	0
	2014	4	0	0.0	0	0.0	0	0.0	0	0.0	0	0.0	0	0.0	2	50.0	0	0.0	2	50.0	0
	2015	3	0	0.0	0	0.0	0	0.0	0	0.0	0	0.0	0	0.0	0	0.0	0	0.0	3	100.0	0
	2016	4	0	0.0	0	0.0	0	0.0	0	0.0	0	0.0	0	0.0	4	100.0	0	0.0	0	0.0	0
	2017	0	0	0.0	0	0.0	0	0.0	0	0.0	0	0.0	0	0.0	0	0.0	0	0.0	0	0.0	0
Doctorate	2013	1	0	0.0	0	0.0	0	0.0	0	0.0	0	0.0	0	0.0	1	100.0	0	0.0	0	0.0	0
	2014	2	0	0.0	0	0.0	0	0.0	0	0.0	0	0.0	0	0.0	0	0.0	0	0.0	2	100.0	0
	2015	4	0	0.0	0	0.0	1	25.0	1	25.0	0	0.0	0	0.0	1	25.0	0	0.0	2	50.0	0
	2016	2	0	0.0	0	0.0	1	50.0	1	50.0	0	0.0	0	0.0	0	0.0	0	0.0	1	50.0	0
	2017	5	1	20.0	0	0.0	0	0.0	1	20.0	0	0.0	0	0.0	2	40.0	0	0.0	2	40.0	0
Non-Degree & Campus Certificate	2013	0	0	0.0	0	0.0	0	0.0	0	0.0	0	0.0	0	0.0	0	0.0	0	0.0	0	0.0	0
	2014	0	0	0.0	0	0.0	0	0.0	0	0.0	0	0.0	0	0.0	0	0.0	0	0.0	0	0.0	0
	2015	0	0	0.0	0	0.0	0	0.0	0	0.0	0	0.0	0	0.0	0	0.0	0	0.0	0	0.0	0
	2016	0	0	0.0	0	0.0	0	0.0	0	0.0	0	0.0	0	0.0	0	0.0	0	0.0	0	0.0	0
	2017	0	0	0.0	0	0.0	0	0.0	0	0.0	0	0.0	0	0.0	0	0.0	0	0.0	0	0.0	0

Note: URM stands for Under-Represented Minority and includes American Indian or Alaska Native; Black or African-American; Hispanic / Latino race/ethnicity groups

Enrollment - New by Race/Ethnicity

Anthropology

Fall 2013 - Fall 2017



Notes: 1) URM stands for Under-Represented Minority and includes American Indian or Alaska Native; Black or African-American; Hispanic / Latino race/ethnicity groups

2) Individual URM groups, Native Hawaiian Pacific Islander, Two or More Races, and Other race/ethnicity categories left off this charts due to relatively low numbers

**Enrollment - Total
by Race/Ethnicity**

Anthropology

Fall 2013 - Fall 2017

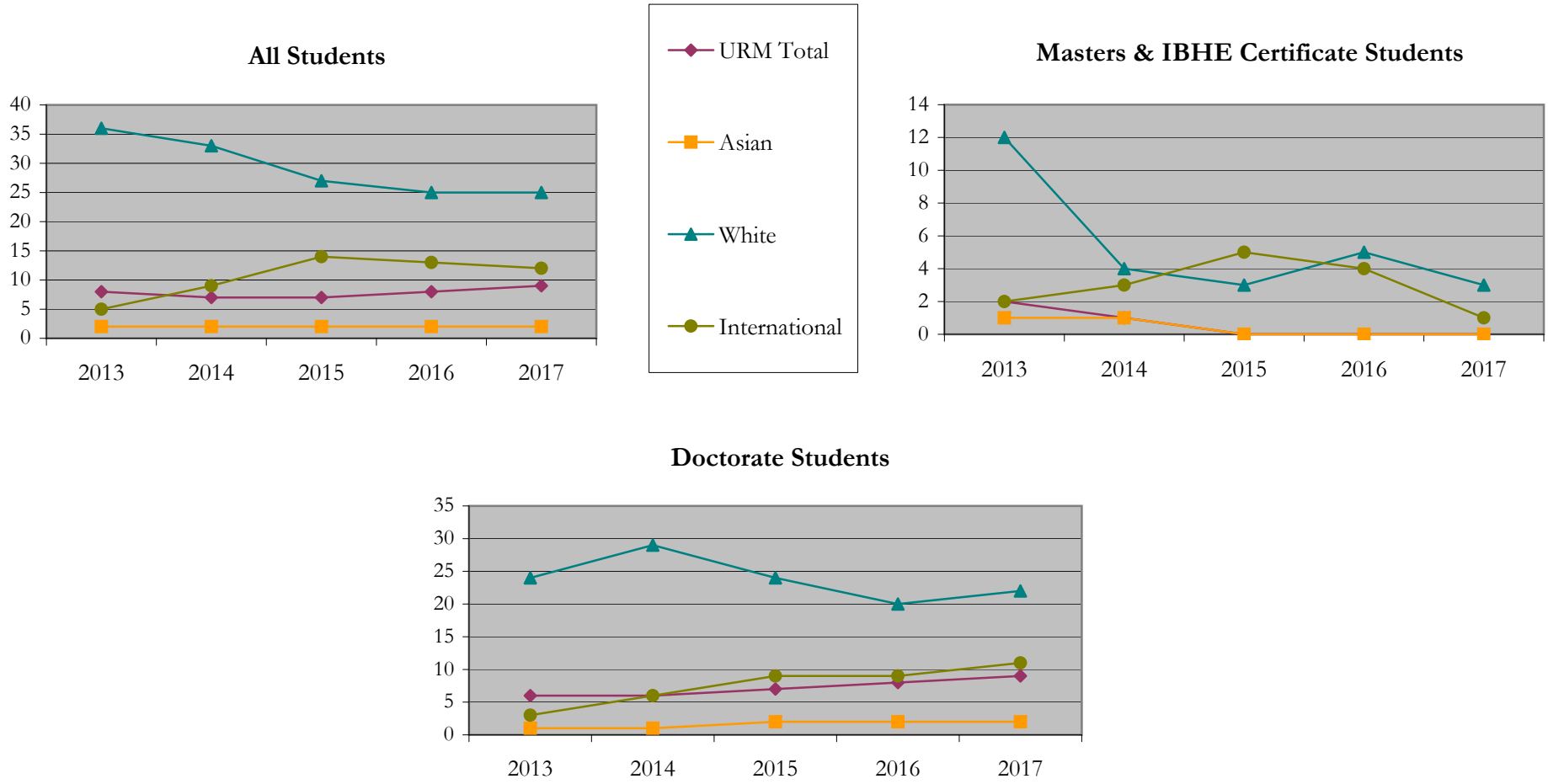
		Total	Under Represented Minorities (URM)								Asian		Native Hawaiian or Pacific Islander		White		Two or More Races		International		Not Reported
			American Indian or Alaska Native		Black or African American		Hispanic / Latino		URM Total												
			Count	%	Count	%	Count	%	Count	%											
All	2013	53	1	1.9	3	5.7	4	7.5	8	15.1	2	3.8	0	0.0	36	67.9	1	1.9	5	9.4	1
	2014	53	1	1.9	2	3.8	4	7.5	7	13.2	2	3.8	0	0.0	33	62.3	1	1.9	9	17.0	1
	2015	50	1	2.0	2	4.0	4	8.0	7	14.0	2	4.0	0	0.0	27	54.0	0	0.0	14	28.0	0
	2016	48	1	2.1	2	4.2	5	10.4	8	16.7	2	4.2	0	0.0	25	52.1	0	0.0	13	27.1	0
	2017	48	2	4.2	2	4.2	5	10.4	9	18.8	2	4.2	0	0.0	25	52.1	0	0.0	12	25.0	0
Masters & IBHE Certificate	2013	17	0	0.0	0	0.0	2	11.8	2	11.8	1	5.9	0	0.0	12	70.6	0	0.0	2	11.8	0
	2014	9	0	0.0	0	0.0	1	11.1	1	11.1	1	11.1	0	0.0	4	44.4	0	0.0	3	33.3	0
	2015	8	0	0.0	0	0.0	0	0.0	0	0.0	0	0.0	0	0.0	3	37.5	0	0.0	5	62.5	0
	2016	9	0	0.0	0	0.0	0	0.0	0	0.0	0	0.0	0	0.0	5	55.6	0	0.0	4	44.4	0
	2017	4	0	0.0	0	0.0	0	0.0	0	0.0	0	0.0	0	0.0	3	75.0	0	0.0	1	25.0	0
Doctorate	2013	36	1	2.8	3	8.3	2	5.6	6	16.7	1	2.8	0	0.0	24	66.7	1	2.8	3	8.3	1
	2014	44	1	2.3	2	4.5	3	6.8	6	13.6	1	2.3	0	0.0	29	65.9	1	2.3	6	13.6	1
	2015	42	1	2.4	2	4.8	4	9.5	7	16.7	2	4.8	0	0.0	24	57.1	0	0.0	9	21.4	0
	2016	39	1	2.6	2	5.1	5	12.8	8	20.5	2	5.1	0	0.0	20	51.3	0	0.0	9	23.1	0
	2017	44	2	4.5	2	4.5	5	11.4	9	20.5	2	4.5	0	0.0	22	50.0	0	0.0	11	25.0	0
Non-Degree & Campus Certificate	2013	0	0	0.0	0	0.0	0	0.0	0	0.0	0	0.0	0	0.0	0	0.0	0	0.0	0	0.0	0
	2014	0	0	0.0	0	0.0	0	0.0	0	0.0	0	0.0	0	0.0	0	0.0	0	0.0	0	0.0	0
	2015	0	0	0.0	0	0.0	0	0.0	0	0.0	0	0.0	0	0.0	0	0.0	0	0.0	0	0.0	0
	2016	0	0	0.0	0	0.0	0	0.0	0	0.0	0	0.0	0	0.0	0	0.0	0	0.0	0	0.0	0
	2017	0	0	0.0	0	0.0	0	0.0	0	0.0	0	0.0	0	0.0	0	0.0	0	0.0	0	0.0	0

Note: URM stands for Under-Represented Minority and includes American Indian or Alaska Native; Black or African-American; Hispanic / Latino race/ethnicity groups

Enrollment - Total by Race/Ethnicity

Anthropology

Fall 2013 - Fall 2017



Notes: 1) URM stands for Under-Represented Minority and includes American Indian or Alaska Native; Black or African-American; Hispanic / Latino race/ethnicity groups

2) Individual URM groups, Native Hawaiian Pacific Islander, Two or More Races, and Other race/ethnicity categories left off this charts due to relatively low numbers

Enrollment

by Student Type, Enrollment Time, and Gender

Anthropology

Fall 2013 - Fall 2017

		Total	New		Continuing		Male		Female		Gender Not Reported	Part-time		Full-time	
			Count	%	Count	%	Count	%	Count	%		Count	%	Count	%
All	2013	53	5	9.4	48	90.6	27	50.9	26	49.1	0	7	13.2	46	86.8
	2014	53	6	11.3	47	88.7	26	49.1	27	50.9	0	9	17.0	44	83.0
	2015	50	7	14.0	43	86.0	22	44.0	28	56.0	0	9	18.0	41	82.0
	2016	48	6	12.5	42	87.5	19	39.6	29	60.4	0	9	18.8	39	81.3
	2017	48	5	10.4	43	89.6	19	39.6	29	60.4	0	11	22.9	37	77.1
Masters & IBHE Certificate	2013	17	4	23.5	13	76.5	7	41.2	10	58.8	0	0	0.0	17	100.0
	2014	9	4	44.4	5	55.6	6	66.7	3	33.3	0	1	11.1	8	88.9
	2015	8	3	37.5	5	62.5	4	50.0	4	50.0	0	0	0.0	8	100.0
	2016	9	4	44.4	5	55.6	1	11.1	8	88.9	0	0	0.0	9	100.0
	2017	4	0	0.0	4	100.0	1	25.0	3	75.0	0	0	0.0	4	100.0
Doctorate	2013	36	1	2.8	35	97.2	20	55.6	16	44.4	0	7	19.4	29	80.6
	2014	44	2	4.5	42	95.5	20	45.5	24	54.5	0	8	18.2	36	81.8
	2015	42	4	9.5	38	90.5	18	42.9	24	57.1	0	9	21.4	33	78.6
	2016	39	2	5.1	37	94.9	18	46.2	21	53.8	0	9	23.1	30	76.9
	2017	44	5	11.4	39	88.6	18	40.9	26	59.1	0	11	25.0	33	75.0
Non-Degree & Campus Certificate	2013	0	0	0.0	0	0.0	0	0.0	0	0.0	0	0	0.0	0	0.0
	2014	0	0	0.0	0	0.0	0	0.0	0	0.0	0	0	0.0	0	0.0
	2015	0	0	0.0	0	0.0	0	0.0	0	0.0	0	0	0.0	0	0.0
	2016	0	0	0.0	0	0.0	0	0.0	0	0.0	0	0	0.0	0	0.0
	2017	0	0	0.0	0	0.0	0	0.0	0	0.0	0	0	0.0	0	0.0

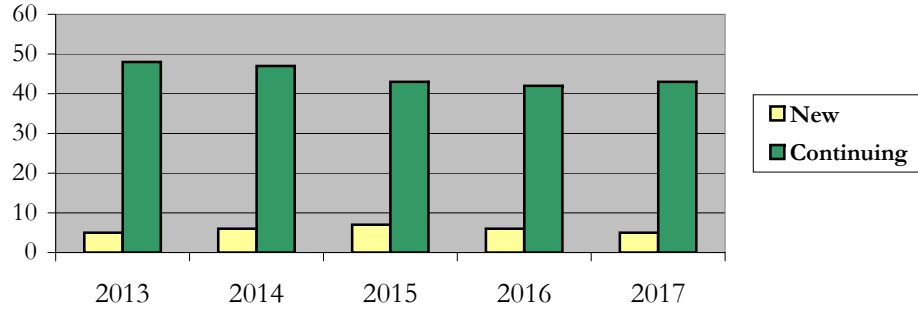
Enrollment

by Student Type, Enrollment Time, and Gender (All Students)

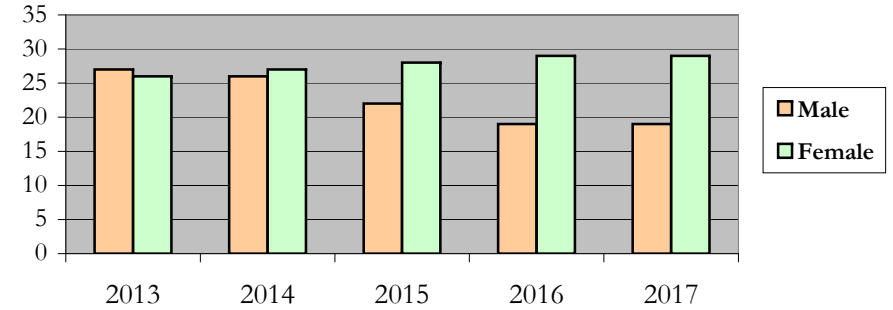
Anthropology

Fall 2013 - Fall 2017

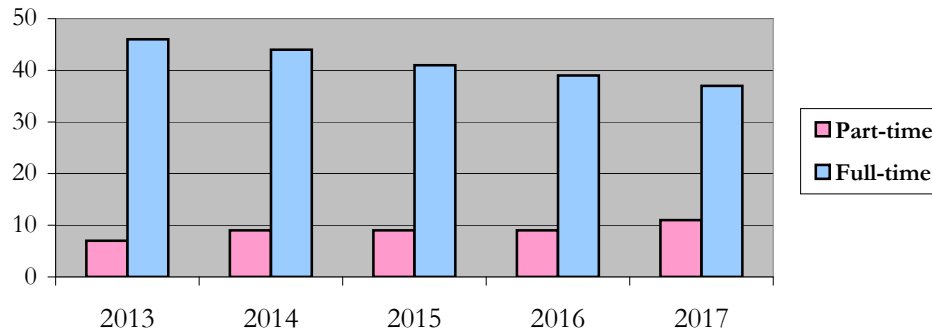
New and Continuing Enrollment



Enrollment by Gender



Enrollment by Student Enrollment Time



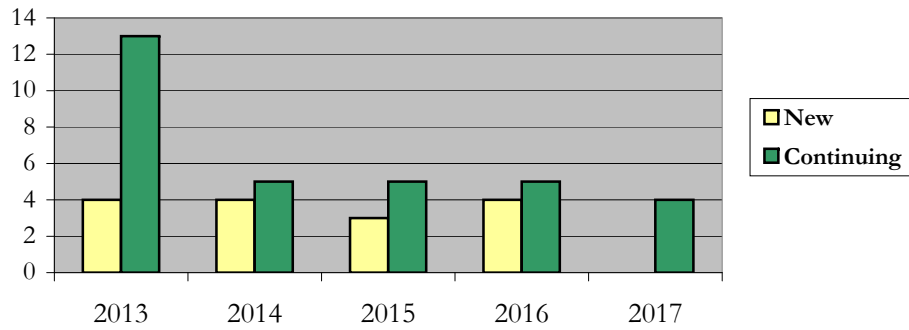
Enrollment

by Student Type, Enrollment Time, and Gender (Master's Students)

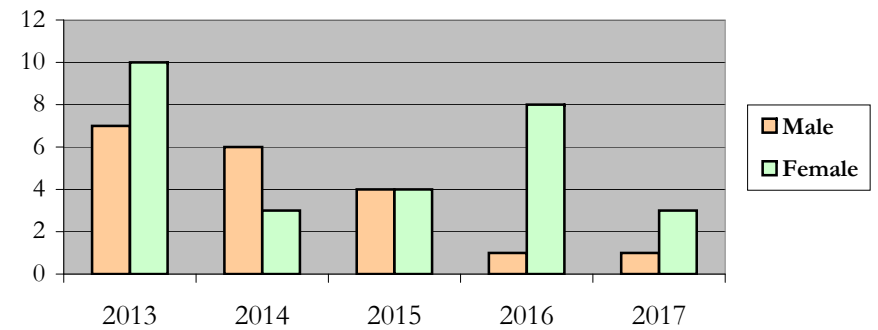
Anthropology

Fall 2013 - Fall 2017

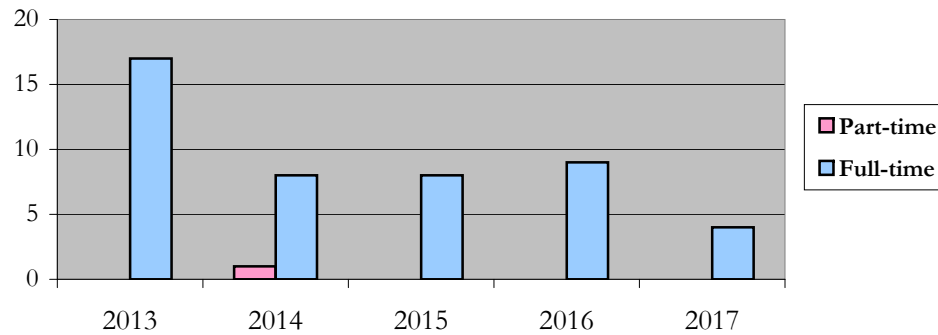
New and Continuing Enrollment



Enrollment by Gender



Enrollment by Student Enrollment Time



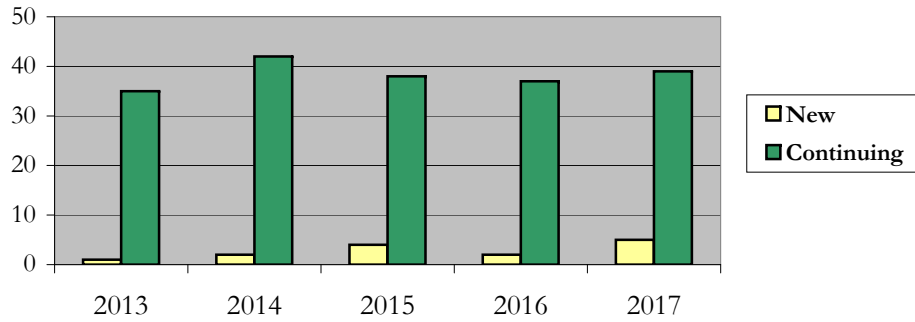
Enrollment

by Student Type, Enrollment Time, and Gender (Doctorate Students)

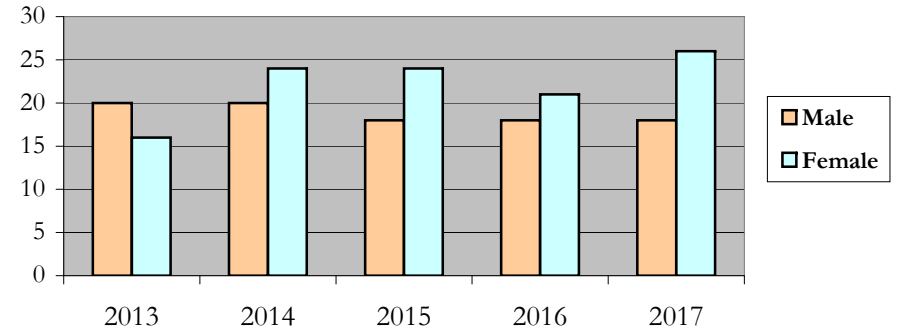
Anthropology

Fall 2013 - Fall 2017

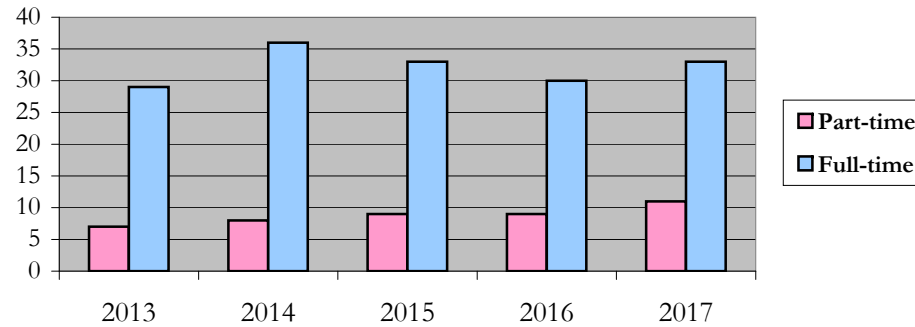
New and Continuing Enrollment



Enrollment by Gender



Enrollment by Student Enrollment Time



Degrees Conferred by Race/Ethnicity

Anthropology

Fall 2013 - Fall 2017

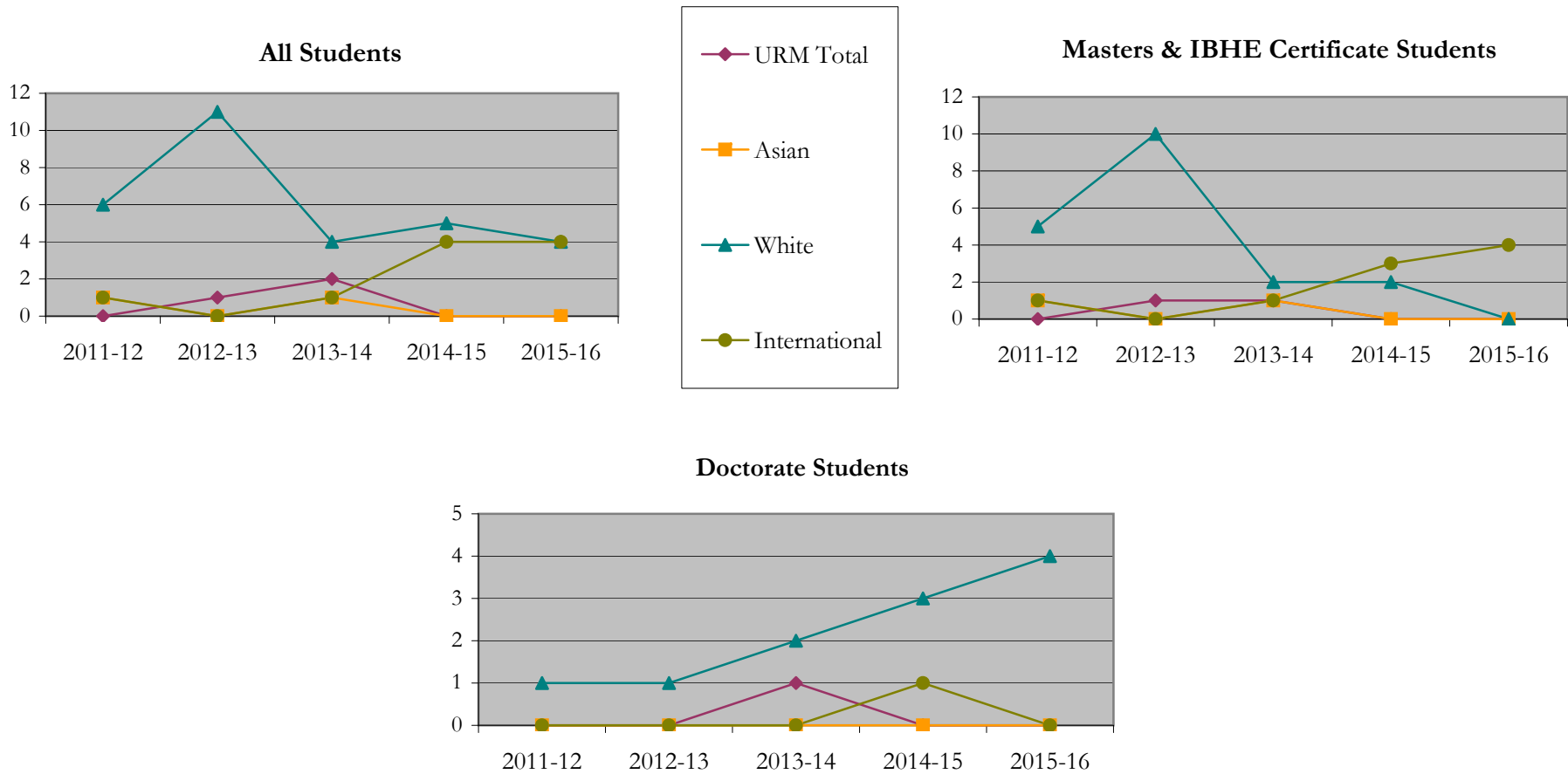
		Total	Under Represented Minorities (URM)								Asian	Native Hawaiian or Pacific Islander		White		Two or More Races		International		Not Reported		
			American Indian or Alaska Native		Black or African American		Hispanic / Latino		URM Total			Count	%	Count	%	Count	%	Count	%		Count	%
			Count	%	Count	%	Count	%	Count	%												
All	2012 - 13	8	0	0.0	0	0.0	0	0.0	0	0.0	1	12.5	0	0.0	6	75.0	0	0.0	1	12.5	0	
	2013 - 14	12	0	0.0	0	0.0	1	8.3	1	8.3	0	0.0	0	0.0	11	91.7	0	0.0	0	0.0	0	
	2014 - 15	10	0	0.0	1	10.0	1	10.0	2	20.0	1	10.0	0	0.0	4	40.0	1	10.0	1	10.0	1	
	2015 - 16	9	0	0.0	0	0.0	0	0.0	0	0.0	0	0.0	0	0.0	5	55.6	0	0.0	4	44.4	0	
	2016 - 17	8	0	0.0	0	0.0	0	0.0	0	0.0	0	0.0	0	0.0	4	50.0	0	0.0	4	50.0	0	
Masters & IBHE Certificate	2012 - 13	7	0	0.0	0	0.0	0	0.0	0	0.0	1	14.3	0	0.0	5	71.4	0	0.0	1	14.3	0	
	2013 - 14	11	0	0.0	0	0.0	1	9.1	1	9.1	0	0.0	0	0.0	10	90.9	0	0.0	0	0.0	0	
	2014 - 15	5	0	0.0	0	0.0	1	20.0	1	20.0	1	20.0	0	0.0	2	40.0	0	0.0	1	20.0	0	
	2015 - 16	5	0	0.0	0	0.0	0	0.0	0	0.0	0	0.0	0	0.0	2	40.0	0	0.0	3	60.0	0	
	2016 - 17	4	0	0.0	0	0.0	0	0.0	0	0.0	0	0.0	0	0.0	0	0.0	0	0.0	4	100.0	0	
Doctorate	2012 - 13	1	0	0.0	0	0.0	0	0.0	0	0.0	0	0.0	0	0.0	1	100.0	0	0.0	0	0.0	0	
	2013 - 14	1	0	0.0	0	0.0	0	0.0	0	0.0	0	0.0	0	0.0	1	100.0	0	0.0	0	0.0	0	
	2014 - 15	5	0	0.0	1	20.0	0	0.0	1	20.0	0	0.0	0	0.0	2	40.0	1	20.0	0	0.0	1	
	2015 - 16	4	0	0.0	0	0.0	0	0.0	0	0.0	0	0.0	0	0.0	3	75.0	0	0.0	1	25.0	0	
	2016 - 17	4	0	0.0	0	0.0	0	0.0	0	0.0	0	0.0	0	0.0	4	100.0	0	0.0	0	0.0	0	
Non-Degree & Campus Certificate	2012 - 13	0	0	0.0	0	0.0	0	0.0	0	0.0	0	0.0	0	0.0	0	0.0	0	0.0	0	0.0	0	
	2013 - 14	0	0	0.0	0	0.0	0	0.0	0	0.0	0	0.0	0	0.0	0	0.0	0	0.0	0	0.0	0	
	2014 - 15	0	0	0.0	0	0.0	0	0.0	0	0.0	0	0.0	0	0.0	0	0.0	0	0.0	0	0.0	0	
	2015 - 16	0	0	0.0	0	0.0	0	0.0	0	0.0	0	0.0	0	0.0	0	0.0	0	0.0	0	0.0	0	
	2016 - 17	0	0	0.0	0	0.0	0	0.0	0	0.0	0	0.0	0	0.0	0	0.0	0	0.0	0	0.0	0	

Note: Each row represents a fiscal year, beginning with Summer term and ending with Spring.

Degrees Conferred by Race/Ethnicity

Anthropology

Fall 2013 - Fall 2017



Notes: 1) URM stands for Under-Represented Minority and includes American Indian or Alaska Native; Black or African-American; Hispanic / Latino race/ethnicity groups

2) Individual URM groups, Native Hawaiian Pacific Islander, Two or More Races, and Other race/ethnicity categories left off this charts due to relatively low numbers

Degrees Conferred
by Gender

Anthropology

Fall 2013 - Fall 2017

		Total	Male		Female		Not Reported
			Count	%	Count	%	
All	2012 - 13	8	3	37.5	5	62.5	0
	2013 - 14	12	5	41.7	7	58.3	0
	2014 - 15	10	7	70.0	3	30.0	0
	2015 - 16	9	4	44.4	5	55.6	0
	2016 - 17	8	2	25.0	6	75.0	0
Masters & IBHE Certificate	2012 - 13	7	2	28.6	5	71.4	0
	2013 - 14	11	4	36.4	7	63.6	0
	2014 - 15	5	3	60.0	2	40.0	0
	2015 - 16	5	3	60.0	2	40.0	0
	2016 - 17	4	0	0.0	4	100.0	0
Doctorate	2012 - 13	1	1	100.0	0	0.0	0
	2013 - 14	1	1	100.0	0	0.0	0
	2014 - 15	5	4	80.0	1	20.0	0
	2015 - 16	4	1	25.0	3	75.0	0
	2016 - 17	4	2	50.0	2	50.0	0
Campus Certificates	2012 - 13	0	0	0.0	0	0.0	0
	2013 - 14	0	0	0.0	0	0.0	0
	2014 - 15	0	0	0.0	0	0.0	0
	2015 - 16	0	0	0.0	0	0.0	0
	2016 - 17	0	0	0.0	0	0.0	0

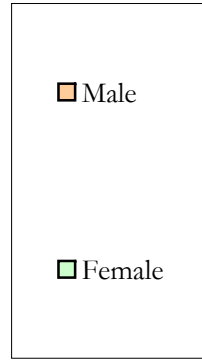
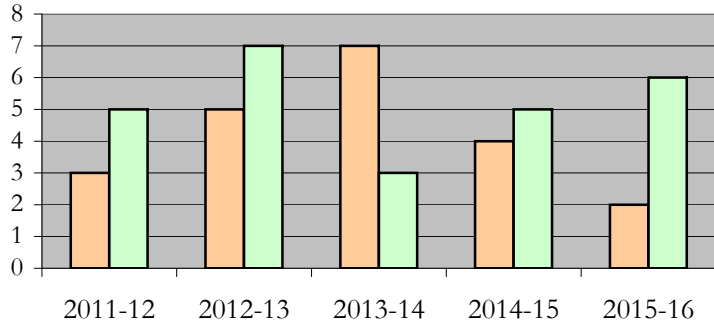
Note: Each row represents a fiscal year, beginning with Summer term and ending with Spring.

Degrees Conferred by Gender

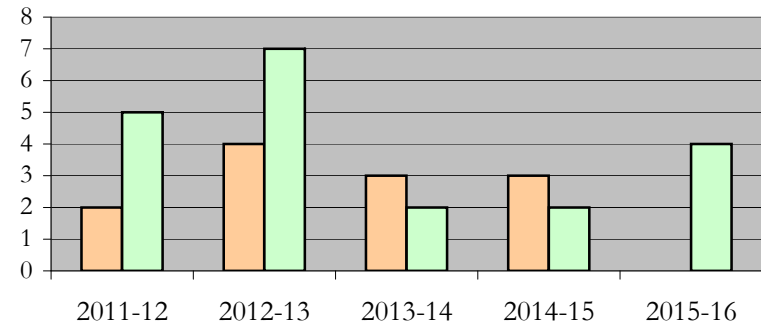
Anthropology

Fall 2013 - Fall 2017

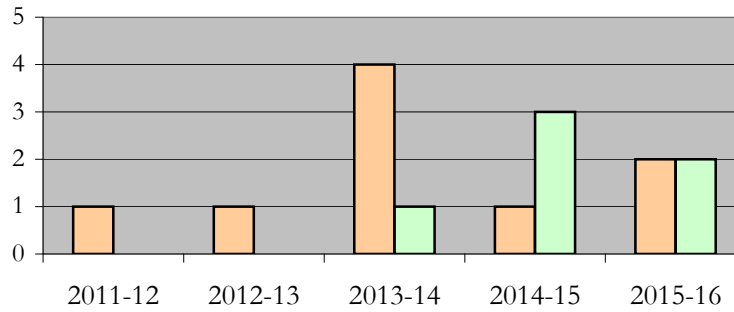
All Students



Masters & IBHE Certificate Students



Doctorate Students



Appendix A

Anthropology

Fall 2013 - Fall 2017

List of program codes included in this document

20FS0340MA

20FS0340PHD

Notes: 1) Program codes are sorted by alphabetical order in column-wise fashion

2) Program codes highlighted in yellow did not have applications, enrollment, nor degrees conferred in the covered period