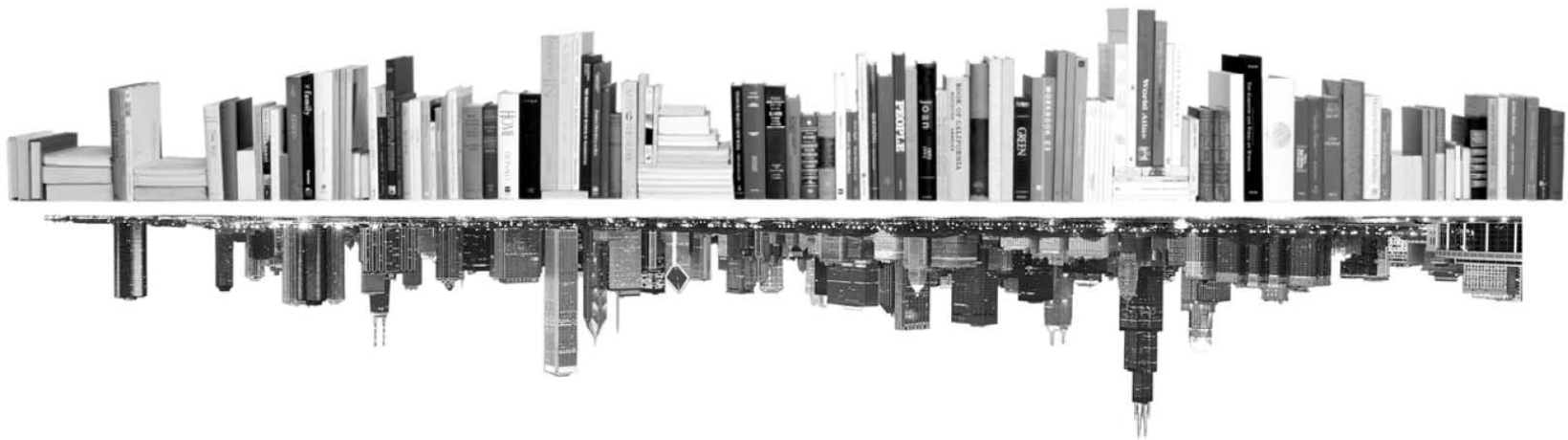


**GRADUATE
COLLEGE**



**ENROLLMENT MANAGEMENT REPORT
COLLEGE PROFILE
GRADUATE COLLEGE
FALL 2016**





INTRODUCTION – COLLEGE PROFILE

The following college profile has been developed to tailor our annual enrollment report to your college’s data.

The college profile report tracks students, not enrollments. This means that students with dual enrollments are reported only once – under their first program.

Kevin Monahan
Director of Graduate Program Review and Information Systems
Graduate College, University of Illinois at Chicago
Voice: 312.413.0410 Email: kmonahan@uic.edu

TABLE OF CONTENTS

MATRICULATION	
Diversity Pipeline	1
APPLICATIONS	
by Race/Ethnicity	2 – 5
ENROLLMENT	
by Race/Ethnicity	6 – 9
by Type, Time, & Gender	10 – 13
DEGREES	
by Race/Ethnicity	14 – 15
by Gender	16 – 17
List of academic programs included in this report	Appendix A

Matriculation

Diversity Pipeline

Graduate College
Fall 2012 - Fall 2016

	Fall Semester Year	Applied					Admitted					Non-URM Admitted to Applied Yield %	URM Admitted to Applied Yield %	New Enrollment					Non-URM Enrolled to Admitted Yield %	URM Enrolled to Admitted Yield %	Total Enrollment				
		Grand Total	Non-URM Total		URM Total		Grand Total	Non-URM Total		URM Total				Grand Total	Non-URM Total		URM Total				Grand Total	Non-URM Total		URM Total	
			Count	%	Count	%		Count	%	Count	%				Count	%	Count	%				Count	%	Count	%
All	2012	390	311	79.7%	79	20.3%	295	224	75.9%	71	24.1%	72.0%	89.9%	170	131	77.1%	39	22.9%	58.5%	54.9%	310	239	77.1%	71	22.9%
	2013	391	305	78.0%	86	22.0%	270	203	75.2%	67	24.8%	66.6%	77.9%	139	112	80.6%	27	19.4%	55.2%	40.3%	290	225	77.6%	65	22.4%
	2014	359	277	77.2%	82	22.8%	248	186	75.0%	62	25.0%	67.1%	75.6%	138	103	74.6%	35	25.4%	55.4%	56.5%	274	210	76.6%	64	23.4%
	2015	369	283	76.7%	86	23.3%	268	201	75.0%	67	25.0%	71.0%	77.9%	138	105	76.1%	33	23.9%	52.2%	49.3%	247	189	76.5%	58	23.5%
	2016	303	221	72.9%	82	27.1%	223	158	70.9%	65	29.1%	71.5%	79.3%	131	91	69.5%	40	30.5%	57.6%	61.5%	242	184	76.0%	58	24.0%
	Average	362	279	77.1%	83	22.9%	261	194	74.5%	66	25.5%	69.6%	80.0%	143	108	75.7%	35	24.3%	55.8%	52.4%	273	209	76.8%	63	23.2%
Masters & IBHE Certificate	2012	4	4	100.0%	0	0.0%	1	1	100.0%	0	0.0%	25.0%	0.0%	0	0	0.0%	0	0.0%	0.0%	0.0%	0	0	0.0%	0	0.0%
	2013	9	9	100.0%	0	0.0%	0	0	0.0%	0	0.0%	0.0%	0.0%	0	0	0.0%	0	0.0%	0.0%	0.0%	1	1	100.0%	0	0.0%
	2014	5	4	80.0%	1	20.0%	0	0	0.0%	0	0.0%	0.0%	0.0%	0	0	0.0%	0	0.0%	0.0%	0.0%	0	0	0.0%	0	0.0%
	2015	7	7	100.0%	0	0.0%	0	0	0.0%	0	0.0%	0.0%	0.0%	0	0	0.0%	0	0.0%	0.0%	0.0%	0	0	0.0%	0	0.0%
	2016	7	6	85.7%	1	14.3%	0	0	0.0%	0	0.0%	0.0%	0.0%	0	0	0.0%	0	0.0%	0.0%	0.0%	0	0	0.0%	0	0.0%
	Average	6	6	93.8%	0	6.3%	0	0	100.0%	0	0.0%	3.3%	0.0%	0	0	0.0%	0	0.0%	0.0%	0.0%	0	0	100.0%	0	0.0%
Doctorate	2012	64	58	90.6%	6	9.4%	10	9	90.0%	1	10.0%	15.5%	16.7%	7	6	85.7%	1	14.3%	66.7%	100.0%	40	34	85.0%	6	15.0%
	2013	70	63	90.0%	7	10.0%	11	9	81.8%	2	18.2%	14.3%	28.6%	8	8	100.0%	0	0.0%	88.9%	0.0%	43	38	88.4%	5	11.6%
	2014	77	66	85.7%	11	14.3%	10	9	90.0%	1	10.0%	13.6%	9.1%	6	6	100.0%	0	0.0%	66.7%	0.0%	44	40	90.9%	4	9.1%
	2015	65	58	89.2%	7	10.8%	8	7	87.5%	1	12.5%	12.1%	14.3%	6	5	83.3%	1	16.7%	71.4%	100.0%	40	36	90.0%	4	10.0%
	2016	49	42	85.7%	7	14.3%	9	8	88.9%	1	11.1%	19.0%	14.3%	3	3	100.0%	0	0.0%	37.5%	0.0%	39	34	87.2%	5	12.8%
	Average	65	57	88.3%	8	11.7%	10	8	87.5%	1	12.5%	14.6%	15.8%	6	6	93.3%	0	6.7%	66.7%	33.3%	41	36	88.3%	5	11.7%
Non-Degree & Campus Certificate	2012	322	249	77.3%	73	22.7%	284	214	75.4%	70	24.6%	85.9%	95.9%	163	125	76.7%	38	23.3%	58.4%	54.3%	270	205	75.9%	65	24.1%
	2013	312	233	74.7%	79	25.3%	259	194	74.9%	65	25.1%	83.3%	82.3%	131	104	79.4%	27	20.6%	53.6%	41.5%	246	186	75.6%	60	24.4%
	2014	277	207	74.7%	70	25.3%	238	177	74.4%	61	25.6%	85.5%	87.1%	132	97	73.5%	35	26.5%	54.8%	57.4%	230	170	73.9%	60	26.1%
	2015	297	218	73.4%	79	26.6%	260	194	74.6%	66	25.4%	89.0%	83.5%	132	100	75.8%	32	24.2%	51.5%	48.5%	207	153	73.9%	54	26.1%
	2016	247	173	70.0%	74	30.0%	214	150	70.1%	64	29.9%	86.7%	86.5%	128	88	68.8%	40	31.3%	58.7%	62.5%	203	150	73.9%	53	26.1%
	Average	291	216	74.2%	75	25.8%	251	186	74.0%	65	26.0%	86.0%	86.9%	137	103	74.9%	34	25.1%	55.3%	52.8%	231	173	74.7%	58	25.3%

Note: URM stands for Under-Represented Minority and includes American Indian or Alaska Native; Black or African-American; Hispanic / Latino race/ethnicity groups

**Applications - Total
by Race/Ethnicity**

Graduate College

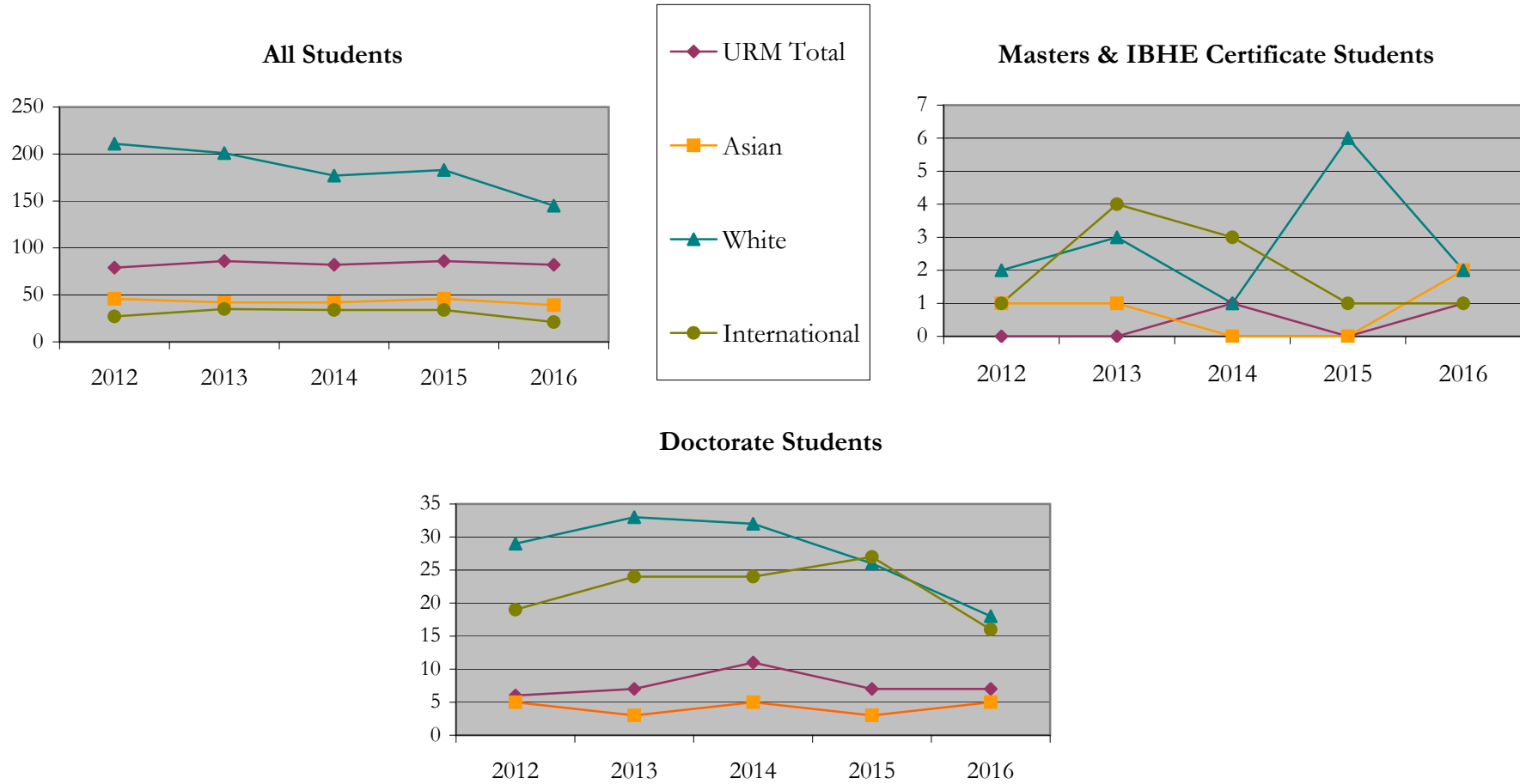
Fall 2012 - Fall 2016

		Total	Under Represented Minorities (URM)																		
			American Indian or Alaska Native		Black or African American		Hispanic / Latino		URM Total		Asian		Native Hawaiian or Pacific Islander		White		Two or More Races		International		Not Reported
			Count	%	Count	%	Count	%	Count	%	Count	%	Count	%	Count	%	Count	%	Count	%	Count
All	2012	390	0	0.0	41	10.5	38	9.7	79	20.3	46	11.8	0	0.0	211	54.1	11	2.8	27	6.9	16
	2013	392	0	0.0	44	11.2	42	10.7	86	21.9	42	10.7	2	0.5	201	51.3	15	3.8	35	8.9	11
	2014	358	1	0.3	45	12.6	36	10.1	82	22.9	42	11.7	1	0.3	177	49.4	12	3.4	34	9.5	10
	2015	369	1	0.3	44	11.9	41	11.1	86	23.3	46	12.5	0	0.0	183	49.6	10	2.7	34	9.2	10
	2016	303	0	0.0	39	12.9	43	14.2	82	27.1	39	12.9	0	0.0	145	47.9	7	2.3	21	6.9	9
Masters & IBHE Certificate	2012	4	0	0.0	0	0.0	0	0.0	0	0.0	1	25.0	0	0.0	2	50.0	0	0.0	1	25.0	0
	2013	9	0	0.0	0	0.0	0	0.0	0	0.0	1	11.1	0	0.0	3	33.3	0	0.0	4	44.4	1
	2014	5	0	0.0	1	20.0	0	0.0	1	20.0	0	0.0	0	0.0	1	20.0	0	0.0	3	60.0	0
	2015	7	0	0.0	0	0.0	0	0.0	0	0.0	0	0.0	0	0.0	6	85.7	0	0.0	1	14.3	0
	2016	7	0	0.0	1	14.3	0	0.0	1	14.3	2	28.6	0	0.0	2	28.6	0	0.0	1	14.3	1
Doctorate	2012	64	0	0.0	5	7.8	1	1.6	6	9.4	5	7.8	0	0.0	29	45.3	2	3.1	19	29.7	3
	2013	70	0	0.0	2	2.9	5	7.1	7	10.0	3	4.3	0	0.0	33	47.1	1	1.4	24	34.3	2
	2014	77	0	0.0	7	9.1	4	5.2	11	14.3	5	6.5	0	0.0	32	41.6	4	5.2	24	31.2	1
	2015	65	0	0.0	4	6.2	3	4.6	7	10.8	3	4.6	0	0.0	26	40.0	0	0.0	27	41.5	2
	2016	49	0	0.0	1	2.0	6	12.2	7	14.3	5	10.2	0	0.0	18	36.7	2	4.1	16	32.7	1
Non-Degree & Campus Certificate	2012	322	0	0.0	36	11.2	37	11.5	73	22.7	40	12.4	0	0.0	180	55.9	9	2.8	7	2.2	13
	2013	313	0	0.0	42	13.4	37	11.8	79	25.2	38	12.1	2	0.6	165	52.7	14	4.5	7	2.2	8
	2014	276	1	0.4	37	13.4	32	11.6	70	25.4	37	13.4	1	0.4	144	52.2	8	2.9	7	2.5	9
	2015	297	1	0.3	40	13.5	38	12.8	79	26.6	43	14.5	0	0.0	151	50.8	10	3.4	6	2.0	8
	2016	247	0	0.0	37	15.0	37	15.0	74	30.0	32	13.0	0	0.0	125	50.6	5	2.0	4	1.6	7

Note: URM stands for Under-Represented Minority and includes American Indian or Alaska Native; Black or African-American; Hispanic / Latino race/ethnicity groups

Applications - Total by Race/Ethnicity

Graduate College
Fall 2012 - Fall 2016



Notes: 1) URM stands for Under-Represented Minority and includes American Indian or Alaska Native; Black or African-American; Hispanic / Latino race/ethnicity groups
 2) Individual URM groups, Native Hawaiian Pacific Islander, Two or More Races, and Other race/ethnicity categories left off this charts due to relatively low numbers

**Applications - Admitted
by Race/Ethnicity**

Graduate College

Fall 2012 - Fall 2016

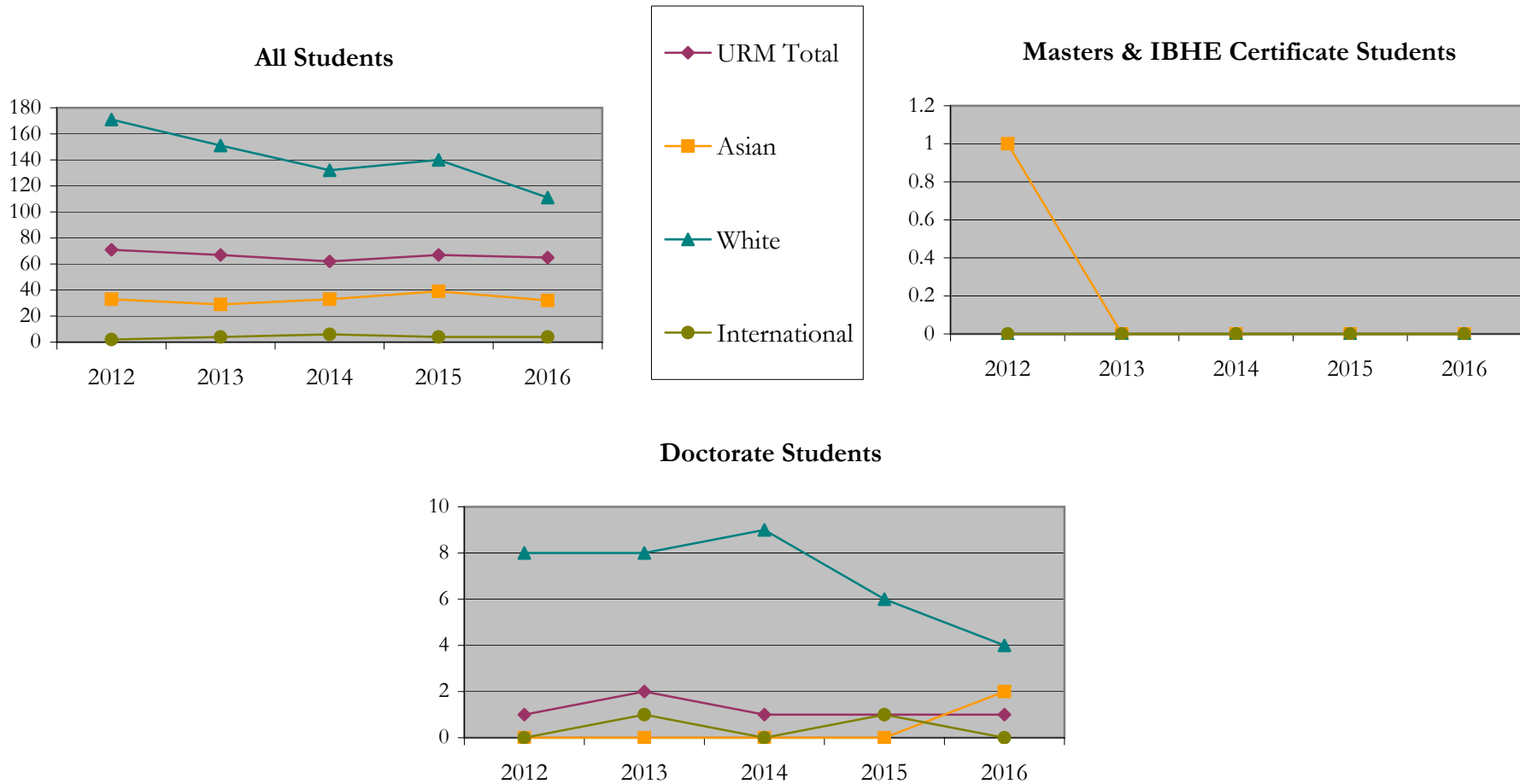
		Total	Under Represented Minorities (URM)								Asian		Native Hawaiian or Pacific Islander		White		Two or More Races		International		Not Reported
			American Indian or Alaska Native		Black or African American		Hispanic / Latino		URM Total												
			Count	%	Count	%	Count	%	Count	%											
All	2012	295	0	0.0	35	11.9	36	12.2	71	24.1	33	11.2	0	0.0	171	58.0	9	3.1	2	0.7	9
	2013	270	0	0.0	35	13.0	32	11.9	67	24.8	29	10.7	0	0.0	151	55.9	13	4.8	4	1.5	6
	2014	248	1	0.4	31	12.5	30	12.1	62	25.0	33	13.3	1	0.4	132	53.2	7	2.8	6	2.4	7
	2015	268	1	0.4	34	12.7	32	11.9	67	25.0	39	14.6	0	0.0	140	52.2	10	3.7	4	1.5	8
	2016	223	0	0.0	31	13.9	34	15.2	65	29.1	32	14.3	0	0.0	111	49.8	5	2.2	4	1.8	6
Masters & IBHE Certificate	2012	1	0	0.0	0	0.0	0	0.0	0	0.0	1	100.0	0	0.0	0	0.0	0	0.0	0	0.0	0
	2013	0	0	0.0	0	0.0	0	0.0	0	0.0	0	0.0	0	0.0	0	0.0	0	0.0	0	0.0	0
	2014	0	0	0.0	0	0.0	0	0.0	0	0.0	0	0.0	0	0.0	0	0.0	0	0.0	0	0.0	0
	2015	0	0	0.0	0	0.0	0	0.0	0	0.0	0	0.0	0	0.0	0	0.0	0	0.0	0	0.0	0
	2016	0	0	0.0	0	0.0	0	0.0	0	0.0	0	0.0	0	0.0	0	0.0	0	0.0	0	0.0	0
Doctorate	2012	10	0	0.0	1	10.0	0	0.0	1	10.0	0	0.0	0	0.0	8	80.0	0	0.0	0	0.0	1
	2013	11	0	0.0	0	0.0	2	18.2	2	18.2	0	0.0	0	0.0	8	72.7	0	0.0	1	9.1	0
	2014	10	0	0.0	0	0.0	1	10.0	1	10.0	0	0.0	0	0.0	9	90.0	0	0.0	0	0.0	0
	2015	8	0	0.0	1	12.5	0	0.0	1	12.5	0	0.0	0	0.0	6	75.0	0	0.0	1	12.5	0
	2016	9	0	0.0	0	0.0	1	11.1	1	11.1	2	22.2	0	0.0	4	44.4	1	11.1	0	0.0	1
Non-Degree & Campus Certificate	2012	284	0	0.0	34	12.0	36	12.7	70	24.6	32	11.3	0	0.0	163	57.4	9	3.2	2	0.7	8
	2013	259	0	0.0	35	13.5	30	11.6	65	25.1	29	11.2	0	0.0	143	55.2	13	5.0	3	1.2	6
	2014	238	1	0.4	31	13.0	29	12.2	61	25.6	33	13.9	1	0.4	123	51.7	7	2.9	6	2.5	7
	2015	260	1	0.4	33	12.7	32	12.3	66	25.4	39	15.0	0	0.0	134	51.5	10	3.8	3	1.2	8
	2016	214	0	0.0	31	14.5	33	15.4	64	29.9	30	14.0	0	0.0	107	50.0	4	1.9	4	1.9	5

Note: URM stands for Under-Represented Minority and includes American Indian or Alaska Native; Black or African-American; Hispanic / Latino race/ethnicity groups

Applications - Admitted by Race/Ethnicity

Graduate College

Fall 2012 - Fall 2016



Notes: 1) URM stands for Under-Represented Minority and includes American Indian or Alaska Native; Black or African-American; Hispanic / Latino race/ethnicity groups

2) Individual URM groups, Native Hawaiian Pacific Islander, Two or More Races, and Other race/ethnicity categories left off this charts due to relatively low numbers

**Enrollment - New
by Race/Ethnicity**

Graduate College

Fall 2012 - Fall 2016

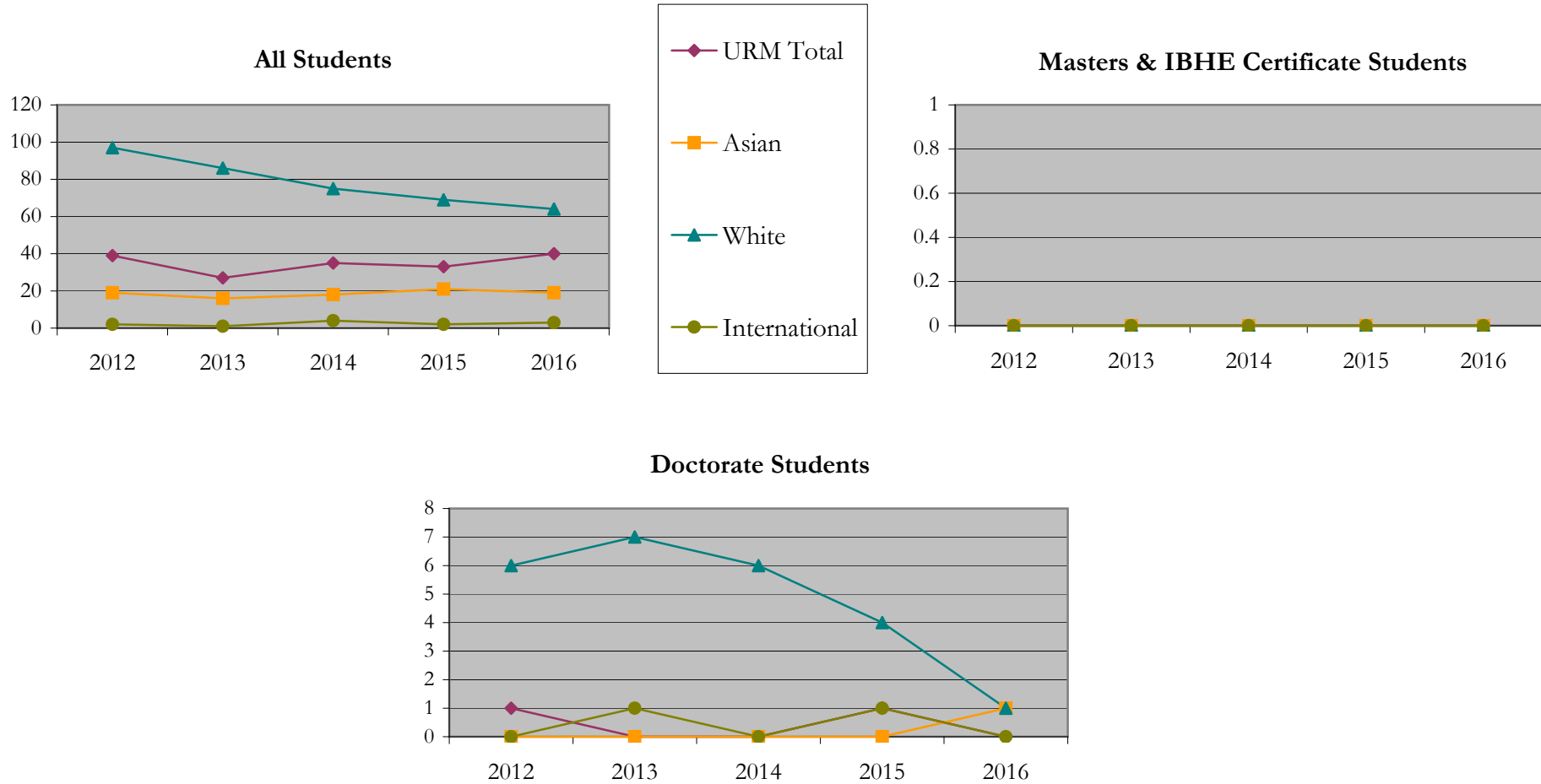
		Total	Under Represented Minorities (URM)								Asian		Native Hawaiian or Pacific Islander		White		Two or More Races		International		Not Reported
			American Indian or Alaska Native		Black or African American		Hispanic / Latino		URM Total												
			Count	%	Count	%	Count	%	Count	%											
All	2012	170	0	0.0	17	10.0	22	12.9	39	22.9	19	11.2	0	0.0	97	57.1	6	3.5	2	1.2	7
	2013	139	0	0.0	12	8.6	15	10.8	27	19.4	16	11.5	0	0.0	86	61.9	6	4.3	1	0.7	3
	2014	138	1	0.7	18	13.0	16	11.6	35	25.4	18	13.0	1	0.7	75	54.3	1	0.7	4	2.9	4
	2015	138	1	0.7	14	10.1	18	13.0	33	23.9	21	15.2	0	0.0	69	50.0	7	5.1	2	1.4	6
	2016	131	0	0.0	17	13.0	23	17.6	40	30.5	19	14.5	0	0.0	64	48.9	2	1.5	3	2.3	3
Masters & IBHE Certificate	2012	0	0	0.0	0	0.0	0	0.0	0	0.0	0	0.0	0	0.0	0	0.0	0	0.0	0	0.0	0
	2013	0	0	0.0	0	0.0	0	0.0	0	0.0	0	0.0	0	0.0	0	0.0	0	0.0	0	0.0	0
	2014	0	0	0.0	0	0.0	0	0.0	0	0.0	0	0.0	0	0.0	0	0.0	0	0.0	0	0.0	0
	2015	0	0	0.0	0	0.0	0	0.0	0	0.0	0	0.0	0	0.0	0	0.0	0	0.0	0	0.0	0
	2016	0	0	0.0	0	0.0	0	0.0	0	0.0	0	0.0	0	0.0	0	0.0	0	0.0	0	0.0	0
Doctorate	2012	7	0	0.0	1	14.3	0	0.0	1	14.3	0	0.0	0	0.0	6	85.7	0	0.0	0	0.0	0
	2013	8	0	0.0	0	0.0	0	0.0	0	0.0	0	0.0	0	0.0	7	87.5	0	0.0	1	12.5	0
	2014	6	0	0.0	0	0.0	0	0.0	0	0.0	0	0.0	0	0.0	6	100.0	0	0.0	0	0.0	0
	2015	6	0	0.0	1	16.7	0	0.0	1	16.7	0	0.0	0	0.0	4	66.7	0	0.0	1	16.7	0
	2016	3	0	0.0	0	0.0	0	0.0	0	0.0	1	33.3	0	0.0	1	33.3	0	0.0	0	0.0	1
Non-Degree & Campus Certificate	2012	163	0	0.0	16	9.8	22	13.5	38	23.3	19	11.7	0	0.0	91	55.8	6	3.7	2	1.2	7
	2013	131	0	0.0	12	9.2	15	11.5	27	20.6	16	12.2	0	0.0	79	60.3	6	4.6	0	0.0	3
	2014	132	1	0.8	18	13.6	16	12.1	35	26.5	18	13.6	1	0.8	69	52.3	1	0.8	4	3.0	4
	2015	132	1	0.8	13	9.8	18	13.6	32	24.2	21	15.9	0	0.0	65	49.2	7	5.3	1	0.8	6
	2016	128	0	0.0	17	13.3	23	18.0	40	31.3	18	14.1	0	0.0	63	49.2	2	1.6	3	2.3	2

Note: URM stands for Under-Represented Minority and includes American Indian or Alaska Native; Black or African-American; Hispanic / Latino race/ethnicity groups

Enrollment - New by Race/Ethnicity

Graduate College

Fall 2012 - Fall 2016



Notes: 1) URM stands for Under-Represented Minority and includes American Indian or Alaska Native; Black or African-American; Hispanic / Latino race/ethnicity groups

2) Individual URM groups, Native Hawaiian Pacific Islander, Two or More Races, and Other race/ethnicity categories left off this charts due to relatively low numbers

**Enrollment - Total
by Race/Ethnicity**

Graduate College

Fall 2012 - Fall 2016

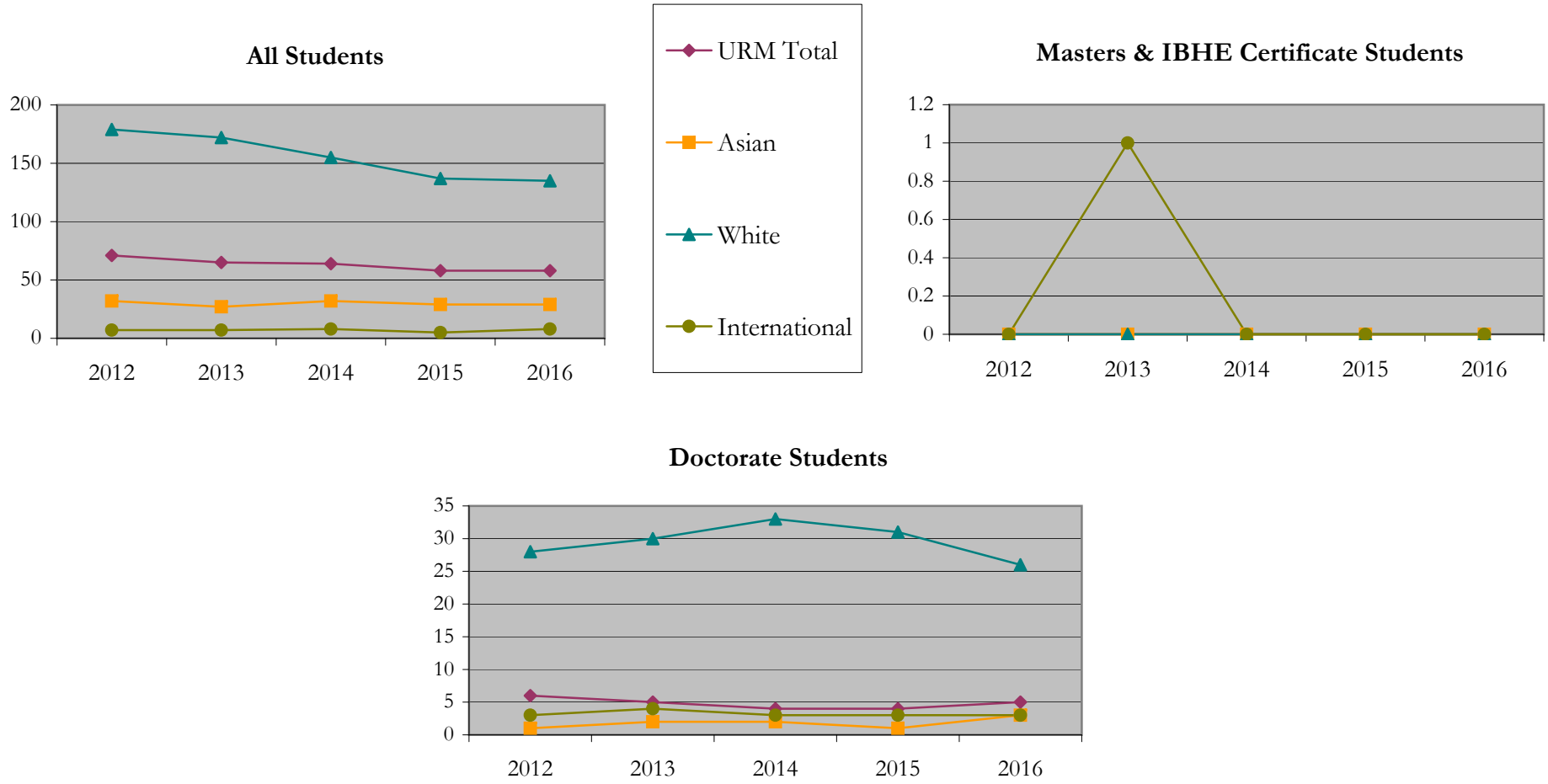
		Total	Under Represented Minorities (URM)								Asian		Native Hawaiian or Pacific Islander		White		Two or More Races		International		Not Reported
			American Indian or Alaska Native		Black or African American		Hispanic / Latino		URM Total												
			Count	%	Count	%	Count	%	Count	%											
All	2012	310	0	0.0	30	9.7	41	13.2	71	22.9	32	10.3	0	0.0	179	57.7	11	3.5	7	2.3	10
	2013	290	0	0.0	28	9.7	37	12.8	65	22.4	27	9.3	0	0.0	172	59.3	9	3.1	7	2.4	10
	2014	274	1	0.4	28	10.2	35	12.8	64	23.4	32	11.7	1	0.4	155	56.6	5	1.8	8	2.9	9
	2015	247	1	0.4	23	9.3	34	13.8	58	23.5	29	11.7	0	0.0	137	55.5	10	4.0	5	2.0	8
	2016	242	0	0.0	22	9.1	36	14.9	58	24.0	29	12.0	0	0.0	135	55.8	6	2.5	8	3.3	6
Masters & IBHE Certificate	2012	0	0	0.0	0	0.0	0	0.0	0	0.0	0	0.0	0	0.0	0	0.0	0	0.0	0	0.0	0
	2013	1	0	0.0	0	0.0	0	0.0	0	0.0	0	0.0	0	0.0	0	0.0	0	0.0	1	100.0	0
	2014	0	0	0.0	0	0.0	0	0.0	0	0.0	0	0.0	0	0.0	0	0.0	0	0.0	0	0.0	0
	2015	0	0	0.0	0	0.0	0	0.0	0	0.0	0	0.0	0	0.0	0	0.0	0	0.0	0	0.0	0
	2016	0	0	0.0	0	0.0	0	0.0	0	0.0	0	0.0	0	0.0	0	0.0	0	0.0	0	0.0	0
Doctorate	2012	40	0	0.0	2	5.0	4	10.0	6	15.0	1	2.5	0	0.0	28	70.0	1	2.5	3	7.5	1
	2013	43	0	0.0	2	4.7	3	7.0	5	11.6	2	4.7	0	0.0	30	69.8	1	2.3	4	9.3	1
	2014	44	0	0.0	1	2.3	3	6.8	4	9.1	2	4.5	0	0.0	33	75.0	1	2.3	3	6.8	1
	2015	40	0	0.0	1	2.5	3	7.5	4	10.0	1	2.5	0	0.0	31	77.5	1	2.5	3	7.5	0
	2016	39	0	0.0	2	5.1	3	7.7	5	12.8	3	7.7	0	0.0	26	66.7	1	2.6	3	7.7	1
Non-Degree & Campus Certificate	2012	270	0	0.0	28	10.4	37	13.7	65	24.1	31	11.5	0	0.0	151	55.9	10	3.7	4	1.5	9
	2013	246	0	0.0	26	10.6	34	13.8	60	24.4	25	10.2	0	0.0	142	57.7	8	3.3	2	0.8	9
	2014	230	1	0.4	27	11.7	32	13.9	60	26.1	30	13.0	1	0.4	122	53.0	4	1.7	5	2.2	8
	2015	207	1	0.5	22	10.6	31	15.0	54	26.1	28	13.5	0	0.0	106	51.2	9	4.3	2	1.0	8
	2016	203	0	0.0	20	9.9	33	16.3	53	26.1	26	12.8	0	0.0	109	53.7	5	2.5	5	2.5	5

Note: URM stands for Under-Represented Minority and includes American Indian or Alaska Native; Black or African-American; Hispanic / Latino race/ethnicity groups

Enrollment - Total by Race/Ethnicity

Graduate College

Fall 2012 - Fall 2016



Notes: 1) URM stands for Under-Represented Minority and includes American Indian or Alaska Native; Black or African-American; Hispanic / Latino race/ethnicity groups

2) Individual URM groups, Native Hawaiian Pacific Islander, Two or More Races, and Other race/ethnicity categories left off this charts due to relatively low numbers

Enrollment

by Student Type, Enrollment Time, and Gender

Graduate College

Fall 2012 - Fall 2016

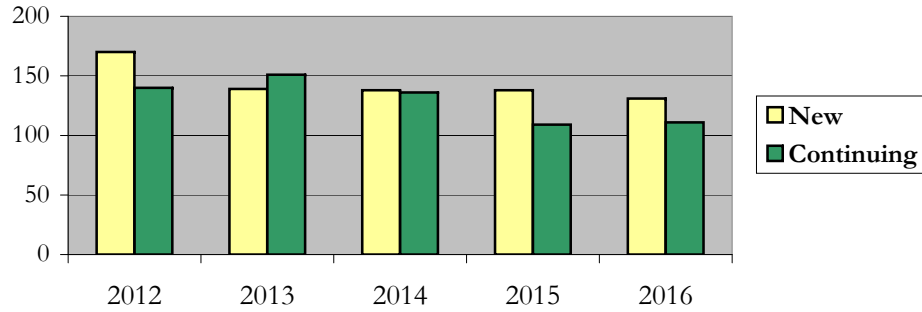
		Total	New		Continuing		Male		Female		Gender Not Reported	Part-time		Full-time	
			Count	%	Count	%	Count	%	Count	%		Count	%	Count	%
All	2012	310	170	54.8	140	45.2	135	43.5	173	55.8	2	193	62.3	117	37.7
	2013	290	139	47.9	151	52.1	116	40.0	171	59.0	3	185	63.8	105	36.2
	2014	274	138	50.4	136	49.6	114	41.6	156	56.9	4	181	66.1	93	33.9
	2015	247	138	55.9	109	44.1	98	39.7	148	59.9	1	161	65.2	86	34.8
	2016	242	131	54.1	111	45.9	102	42.1	140	57.9	0	170	70.2	72	29.8
Masters & IBHE Certificate	2012	0	0	0.0	0	0.0	0	0.0	0	0.0	0	0	0.0	0	0.0
	2013	1	0	0.0	1	100.0	1	100.0	0	0.0	0	0	0.0	1	100.0
	2014	0	0	0.0	0	0.0	0	0.0	0	0.0	0	0	0.0	0	0.0
	2015	0	0	0.0	0	0.0	0	0.0	0	0.0	0	0	0.0	0	0.0
	2016	0	0	0.0	0	0.0	0	0.0	0	0.0	0	0	0.0	0	0.0
Doctorate	2012	40	7	17.5	33	82.5	15	37.5	25	62.5	0	2	5.0	38	95.0
	2013	43	8	18.6	35	81.4	16	37.2	27	62.8	0	3	7.0	40	93.0
	2014	44	6	13.6	38	86.4	18	40.9	26	59.1	0	4	9.1	40	90.9
	2015	40	6	15.0	34	85.0	16	40.0	24	60.0	0	4	10.0	36	90.0
	2016	39	3	7.7	36	92.3	16	41.0	23	59.0	0	7	17.9	32	82.1
Non-Degree & Campus Certificate	2012	270	163	60.4	107	39.6	120	44.4	148	54.8	2	191	70.7	79	29.3
	2013	246	131	53.3	115	46.7	99	40.2	144	58.5	3	182	74.0	64	26.0
	2014	230	132	57.4	98	42.6	96	41.7	130	56.5	4	177	77.0	53	23.0
	2015	207	132	63.8	75	36.2	82	39.6	124	59.9	1	157	75.8	50	24.2
	2016	203	128	63.1	75	36.9	86	42.4	117	57.6	0	163	80.3	40	19.7

Enrollment
by Student Type, Enrollment Time, and Gender (All Students)

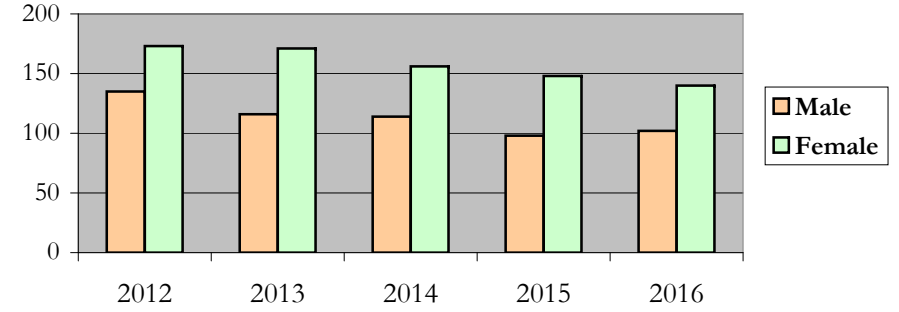
Graduate College

Fall 2012 - Fall 2016

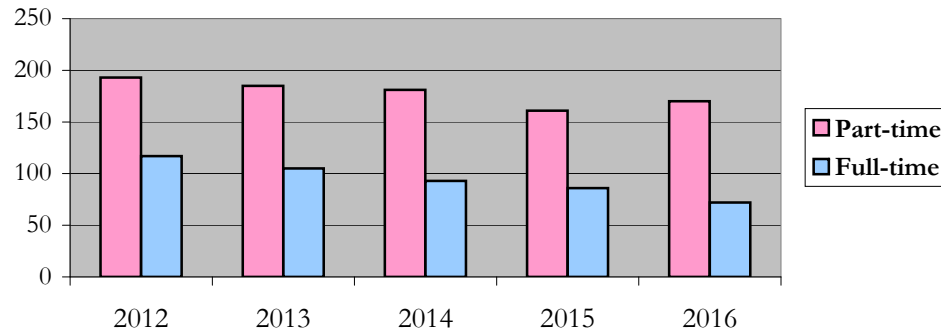
New and Continuing Enrollment



Enrollment by Gender



Enrollment by Student Enrollment Time

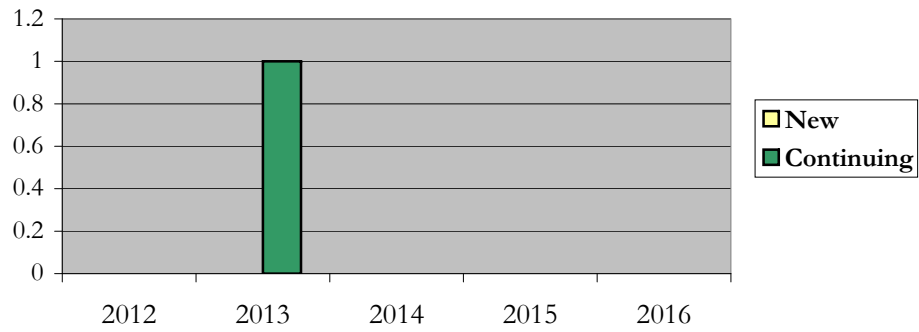


Enrollment
by Student Type, Enrollment Time, and Gender (Master's Students)

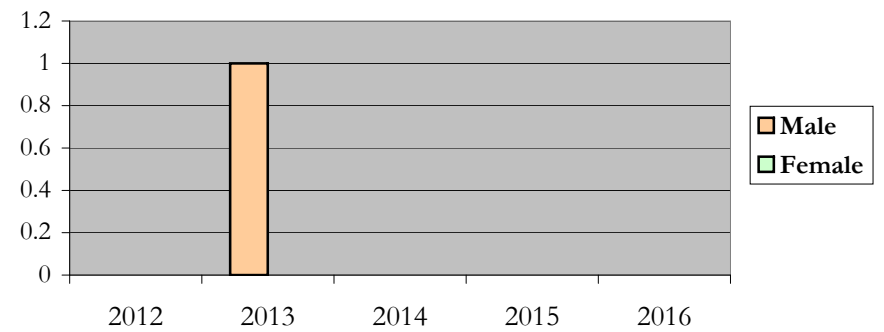
Graduate College

Fall 2012 - Fall 2016

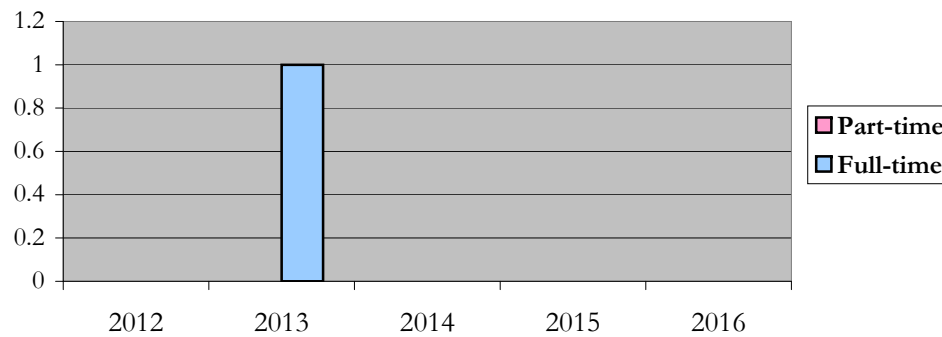
New and Continuing Enrollment



Enrollment by Gender



Enrollment by Student Enrollment Time

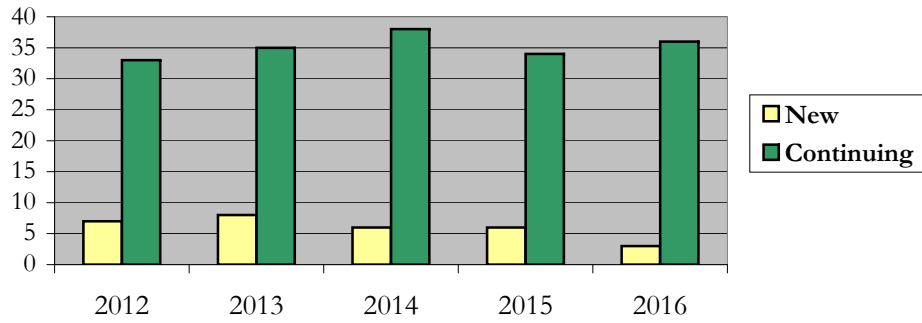


Enrollment
by Student Type, Enrollment Time, and Gender (Doctorate Students)

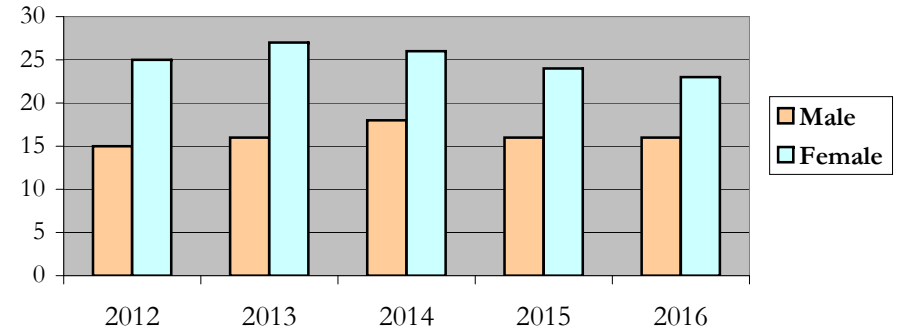
Graduate College

Fall 2012 - Fall 2016

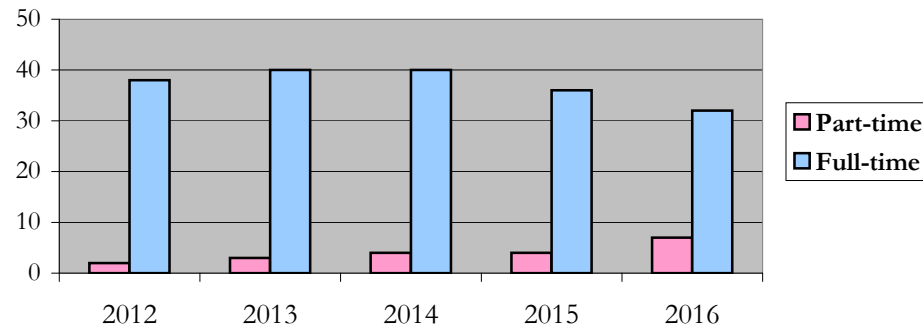
New and Continuing Enrollment



Enrollment by Gender



Enrollment by Student Enrollment Time



Degrees Conferred by Race/Ethnicity

Graduate College

Fall 2012 - Fall 2016

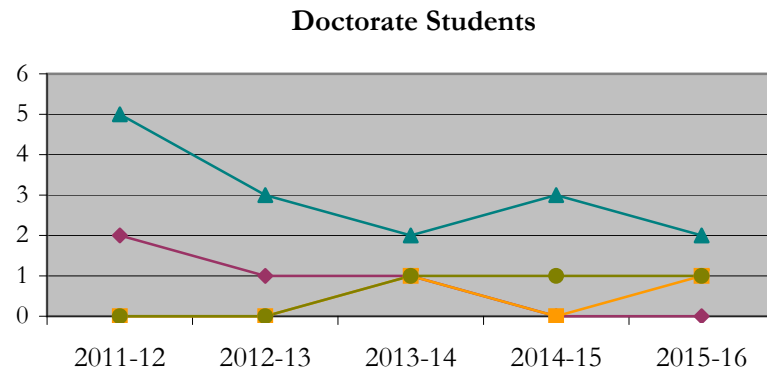
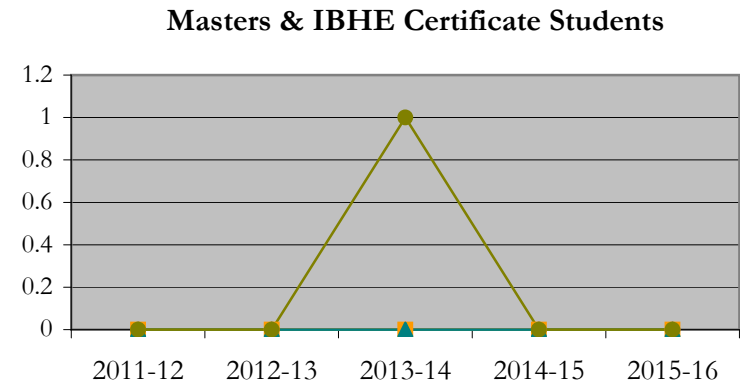
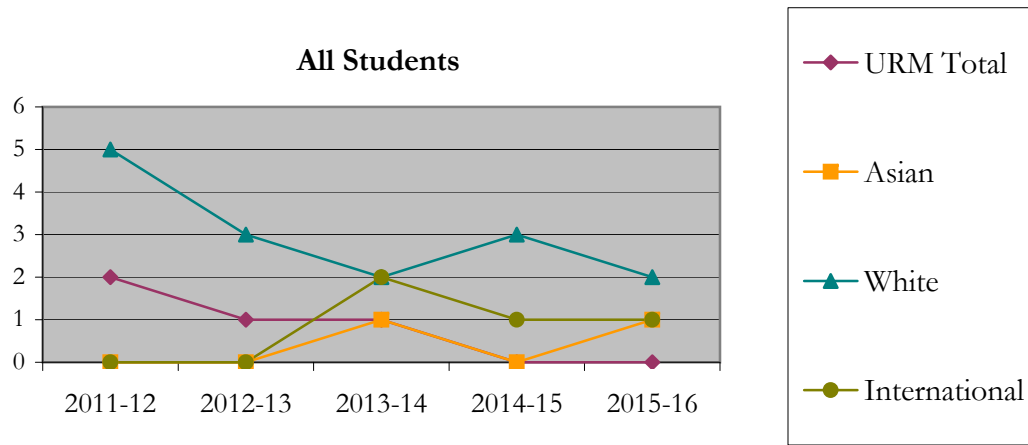
		Total	Under Represented Minorities (URM)								Asian	Native Hawaiian or Pacific Islander	White	Two or More Races	International	Not Reported					
			American Indian or Alaska Native		Black or African American		Hispanic / Latino		URM Total												
			Count	%	Count	%	Count	%	Count	%							Count	%	Count	%	Count
All	2011 - 12	7	0	0.0	1	14.3	1	14.3	2	28.6	0	0.0	0	0.0	5	71.4	0	0.0	0	0.0	0
	2012 - 13	5	0	0.0	1	20.0	0	0.0	1	20.0	0	0.0	0	0.0	3	60.0	0	0.0	0	0.0	1
	2013 - 14	6	0	0.0	0	0.0	1	16.7	1	16.7	1	16.7	0	0.0	2	33.3	0	0.0	2	33.3	0
	2014 - 15	4	0	0.0	0	0.0	0	0.0	0	0.0	0	0.0	0	0.0	3	75.0	0	0.0	1	25.0	0
	2015 - 16	5	0	0.0	0	0.0	0	0.0	0	0.0	1	20.0	0	0.0	2	40.0	0	0.0	1	20.0	1
Masters & IBHE Certificate	2011 - 12	0	0	0.0	0	0.0	0	0.0	0	0.0	0	0.0	0	0.0	0	0.0	0	0.0	0	0.0	0
	2012 - 13	0	0	0.0	0	0.0	0	0.0	0	0.0	0	0.0	0	0.0	0	0.0	0	0.0	0	0.0	0
	2013 - 14	1	0	0.0	0	0.0	0	0.0	0	0.0	0	0.0	0	0.0	0	0.0	0	0.0	1	100.0	0
	2014 - 15	0	0	0.0	0	0.0	0	0.0	0	0.0	0	0.0	0	0.0	0	0.0	0	0.0	0	0.0	0
	2015 - 16	0	0	0.0	0	0.0	0	0.0	0	0.0	0	0.0	0	0.0	0	0.0	0	0.0	0	0.0	0
Doctorate	2011 - 12	7	0	0.0	1	14.3	1	14.3	2	28.6	0	0.0	0	0.0	5	71.4	0	0.0	0	0.0	0
	2012 - 13	5	0	0.0	1	20.0	0	0.0	1	20.0	0	0.0	0	0.0	3	60.0	0	0.0	0	0.0	1
	2013 - 14	5	0	0.0	0	0.0	1	20.0	1	20.0	1	20.0	0	0.0	2	40.0	0	0.0	1	20.0	0
	2014 - 15	4	0	0.0	0	0.0	0	0.0	0	0.0	0	0.0	0	0.0	3	75.0	0	0.0	1	25.0	0
	2015 - 16	5	0	0.0	0	0.0	0	0.0	0	0.0	1	20.0	0	0.0	2	40.0	0	0.0	1	20.0	1
Non-Degree & Campus Certificate	2011 - 12	0	0	0.0	0	0.0	0	0.0	0	0.0	0	0.0	0	0.0	0	0.0	0	0.0	0	0.0	0
	2012 - 13	0	0	0.0	0	0.0	0	0.0	0	0.0	0	0.0	0	0.0	0	0.0	0	0.0	0	0.0	0
	2013 - 14	0	0	0.0	0	0.0	0	0.0	0	0.0	0	0.0	0	0.0	0	0.0	0	0.0	0	0.0	0
	2014 - 15	0	0	0.0	0	0.0	0	0.0	0	0.0	0	0.0	0	0.0	0	0.0	0	0.0	0	0.0	0
	2015 - 16	0	0	0.0	0	0.0	0	0.0	0	0.0	0	0.0	0	0.0	0	0.0	0	0.0	0	0.0	0

Note: Each row represents a fiscal year, beginning with Summer term and ending with Spring.

Degrees Conferred by Race/Ethnicity

Graduate College

Fall 2012 - Fall 2016



Notes: 1) URM stands for Under-Represented Minority and includes American Indian or Alaska Native; Black or African-American; Hispanic / Latino race/ethnicity groups

2) Individual URM groups, Native Hawaiian Pacific Islander, Two or More Races, and Other race/ethnicity categories left off this charts due to relatively low numbers

Degrees Conferred

by Gender

Graduate College

Fall 2012 - Fall 2016

		Total	Male		Female		Not Reported
			Count	%	Count	%	
All	2011 - 12	7	3	42.9	4	57.1	0
	2012 - 13	5	2	40.0	3	60.0	0
	2013 - 14	6	3	50.0	3	50.0	0
	2014 - 15	4	3	75.0	1	25.0	0
	2015 - 16	5	3	60.0	2	40.0	0
Masters & IBHE Certificate	2011 - 12	0	0	0.0	0	0.0	0
	2012 - 13	0	0	0.0	0	0.0	0
	2013 - 14	1	1	100.0	0	0.0	0
	2014 - 15	0	0	0.0	0	0.0	0
	2015 - 16	0	0	0.0	0	0.0	0
Doctorate	2011 - 12	7	3	42.9	4	57.1	0
	2012 - 13	5	2	40.0	3	60.0	0
	2013 - 14	5	2	40.0	3	60.0	0
	2014 - 15	4	3	75.0	1	25.0	0
	2015 - 16	5	3	60.0	2	40.0	0
Campus Certificates	2011 - 12	0	0	0.0	0	0.0	0
	2012 - 13	0	0	0.0	0	0.0	0
	2013 - 14	0	0	0.0	0	0.0	0
	2014 - 15	0	0	0.0	0	0.0	0
	2015 - 16	0	0	0.0	0	0.0	0

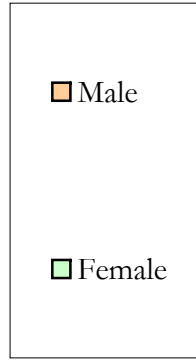
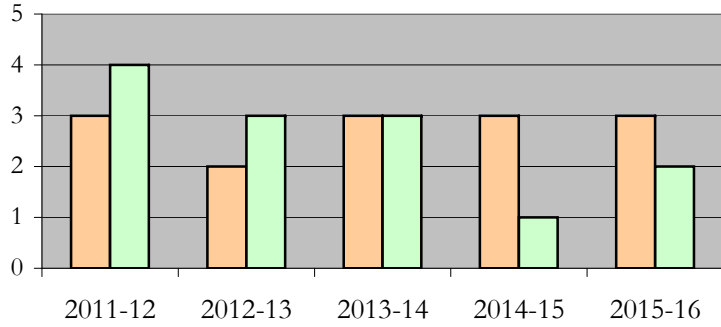
Note: Each row represents a fiscal year, beginning with Summer term and ending with Spring.

Degrees Conferred by Gender

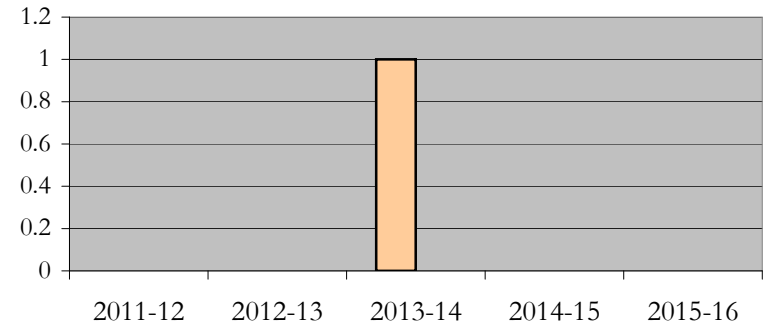
Graduate College

Fall 2012 - Fall 2016

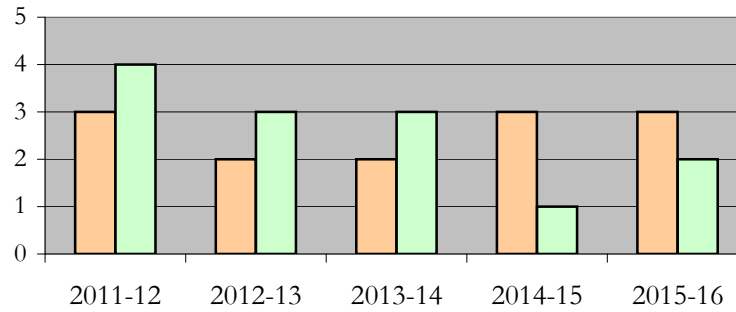
All Students



Masters & IBHE Certificate Students



Doctorate Students



Appendix A

Graduate College

Fall 2012 - Fall 2016

List of program codes included in this document

20FS0323MS

20FS0323NDEG

20FS0323PHD

20FS1780NDEG

20FS5084NDEG

20FS5084PHD

20FS5531NDEG

Notes: 1) Program codes are sorted by alphabetical order in column-wise fashion

2) Program codes highlighted in yellow did not have applications, enrollment, nor degrees conferred in the covered period