

Matriculation

Diversity Pipeline

Energy_Engineering_MEE [20FS5085MEE]

Fall 2013 through Fall 2017

Fall Semester Year	Applied					Admitted					Non-URM Admitted to Applied Yield %	URM Admitted to Applied Yield %	New Enrollment					Non-URM Enrolled to Admitted Yield %	URM Enrolled to Admitted Yield %	Total Enrollment				
	Grand Total	Non-URM Total		URM Total		Grand Total	Non-URM Total		URM Total				Grand Total	Non-URM Total		URM Total				Grand Total	Non-URM Total		URM Total	
		Count	%	Count	%		Count	%	Count	%				Count	%	Count	%				Count	%	Count	%
	Count	%	Count	%	Count	%	Count	%	Count	%			Count	%	Count	%	Count			%	Count	%	Count	%
2013	48	40	83.3%	8	16.7%	35	27	77.1%	8	22.9%	67.5%	100.0%	18	14	77.8%	4	22.2%	51.9%	50.0%	57	49	86.0%	8	14.0%
2014	60	56	93.3%	4	6.7%	40	36	90.0%	4	10.0%	64.3%	100.0%	18	16	88.9%	2	11.1%	44.4%	50.0%	51	44	86.3%	7	13.7%
2015	55	50	90.9%	5	9.1%	40	37	92.5%	3	7.5%	74.0%	60.0%	17	15	88.2%	2	11.8%	40.5%	66.7%	44	41	93.2%	3	6.8%
2016	64	55	85.9%	9	14.1%	53	46	86.8%	7	13.2%	83.6%	77.8%	20	18	90.0%	2	10.0%	39.1%	28.6%	49	44	89.8%	5	10.2%
2017	49	46	93.9%	3	6.1%	33	31	93.9%	2	6.1%	67.4%	66.7%	9	9	100.0%	0	0.0%	29.0%	0.0%	34	30	88.2%	4	11.8%
Average	55	49	89.5%	6	10.5%	40	35	88.1%	5	11.9%	71.7%	82.8%	16	14	87.8%	2	12.2%	40.7%	41.7%	47	42	88.5%	5.4	11.5%

Note: URM stands for Under-Represented Minority and includes American Indian or Alaska Native; Black or African-American; Hispanic / Latino race/ethnicity groups

Applications, Admission, & New Enrollment Yields

by Race/Ethnicity & Gender

Energy_Engineering_MEE [20FS5085MEE]

Fall 2013 through Fall 2017

	Fall Semester Year	Total	Under Represented Minorities (URM)										Race/Eth Not Reported	Male	Female												
			American Indian or Alaska Native		Black or African American		Hispanic / Latino		URM Total		Asian					Native Hawaiian or Pacific Islander		White		Two or More Races		International					
		Count	% Yield	Count	% Yield	Count	% Yield	Count	% Yield	Count	% Yield	Count	% Yield	Count	% Yield	Count	% Yield	Count	% Yield	Count	% Yield	Count	% Yield	Count	% Yield		
Applied	2013	48		0		4		4		8		3		0		13		1		21		2		39		9	
	2014	60		0		0		4		4		10		0		17		0		28		1		48		12	
	2015	55		0		2		3		5		6		0		16		0		28		0		40		15	
	2016	64		0		7		2		9		6		0		19		3		26		1		48		16	
	2017	49		0		1		2		3		4		0		17		0		25		0		36		13	
Admitted	2013	35	72.9	0	0.0	4	100.0	4	100.0	8	100.0	2	66.7	0	0.0	11	84.6	1	100.0	12	57.1	1		29	74.4	6	66.7
	2014	40	66.7	0	0.0	0	0.0	4	100.0	4	100.0	9	90.0	0	0.0	7	41.2	0	0.0	20	71.4	0		32	66.7	8	66.7
	2015	40	72.7	0	0.0	1	50.0	2	66.7	3	60.0	5	83.3	0	0.0	10	62.5	0	0.0	22	78.6	0		28	70.0	12	80.0
	2016	53	82.8	0	0.0	5	71.4	2	100.0	7	77.8	4	66.7	0	0.0	17	89.5	3	100.0	21	80.8	1		41	85.4	12	75.0
	2017	33	67.3	0	0.0	0	0.0	2	100.0	2	66.7	3	75.0	0	0.0	13	76.5	0	0.0	15	60.0	0		24	66.7	9	69.2
Enrolled	2013	18	51.4	0	0.0	3	75.0	1	25.0	4	50.0	2	100.0	0	0.0	7	63.6	1	100.0	3	25.0	1		14	48.3	4	66.7
	2014	18	45.0	0	0.0	0	0.0	2	50.0	2	50.0	5	55.6	0	0.0	5	71.4	0	0.0	5	25.0	1		15	46.9	2	25.0
	2015	17	42.5	0	0.0	1	100.0	1	50.0	2	66.7	2	40.0	0	0.0	8	80.0	0	0.0	5	22.7	0		12	42.9	5	41.7
	2016	20	37.7	0	0.0	1	20.0	1	50.0	2	28.6	3	75.0	0	0.0	9	52.9	2	66.7	4	19.0	0		15	36.6	5	41.7
	2017	9	27.3	0	0.0	0	0.0	0	0.0	0	0.0	1	33.3	0	0.0	6	46.2	0	0.0	2	13.3	0		5	20.8	4	44.4

Notes:

- 1) URM stands for Under-Represented Minority and includes American Indian or Alaska Native; Black or African-American; Hispanic / Latino race/ethnicity groups
- 2) Unreported Gender identification is not shown; Male and Female total may not match Total
- 3) In rare situations, the "% Yield" columns may be greater than 100. There are three potential reasons for this:
 - a) Students that received Graduate College approved transfers may not have an admission record for the program that they enrolled into.
 - b) Students with a secondary curriculum enrollment may not have an admission record for that secondary program.
 - c) Students who were newly enrolled in the summer term prior to the fall were added to the fall new enrollment totals.

Applications, Admission, & New Enrollment Yields, cont. by Race/Ethnicity & Gender

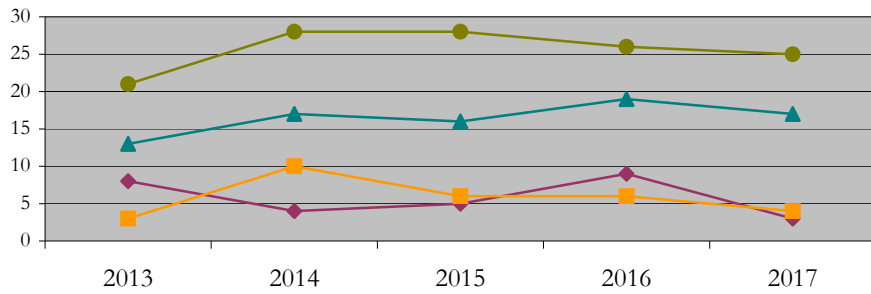
Energy_Engineering_MEE [20FS5085MEE]

Fall 2013 through Fall 2017

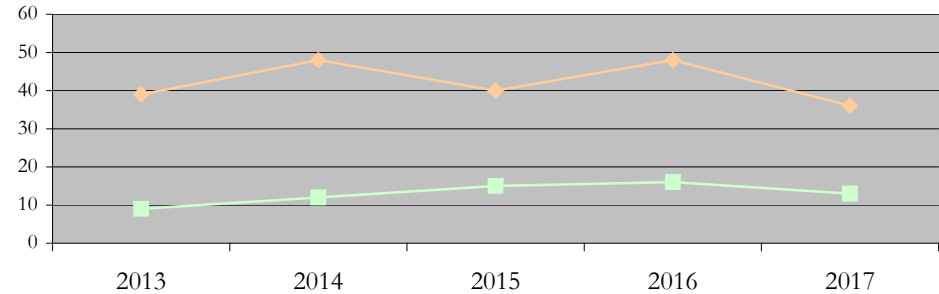
URM Total Asian White International

Male Female

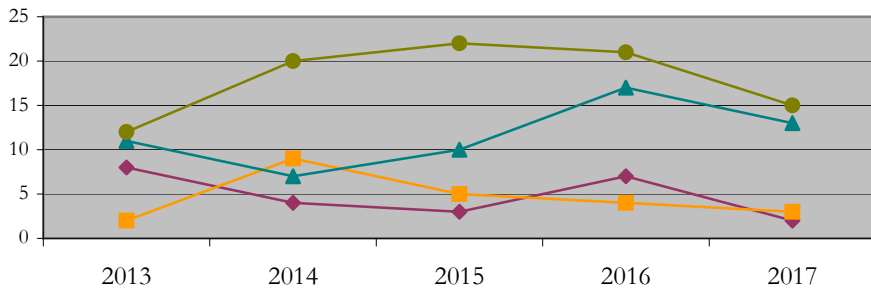
Applications by Race/Ethnicity



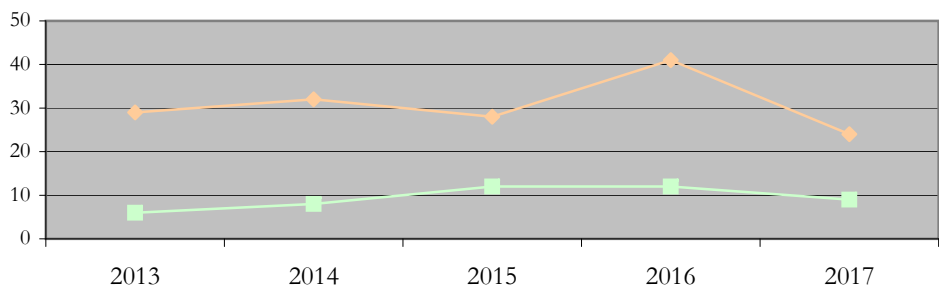
Applications by Gender



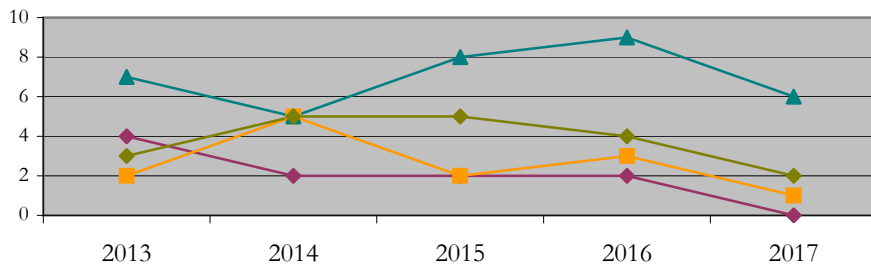
Admissions by Race/Ethnicity



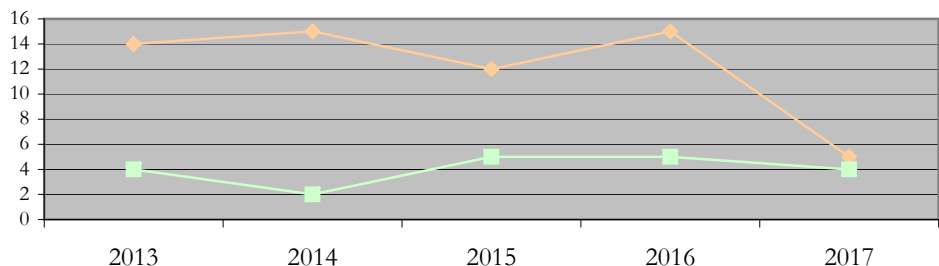
Admissions by Gender



New Enrollments by Race/Ethnicity



New Enrollments by Gender



Notes: 1) URM stands for Under-Represented Minority and includes American Indian or Alaska Native; Black or African-American; Hispanic / Latino race/ethnicity groups
2) Individual URM groups, Native Hawaiian Pacific Islander, Two or More Races, and Other race/ethnicity categories left off these charts due to relatively low numbers

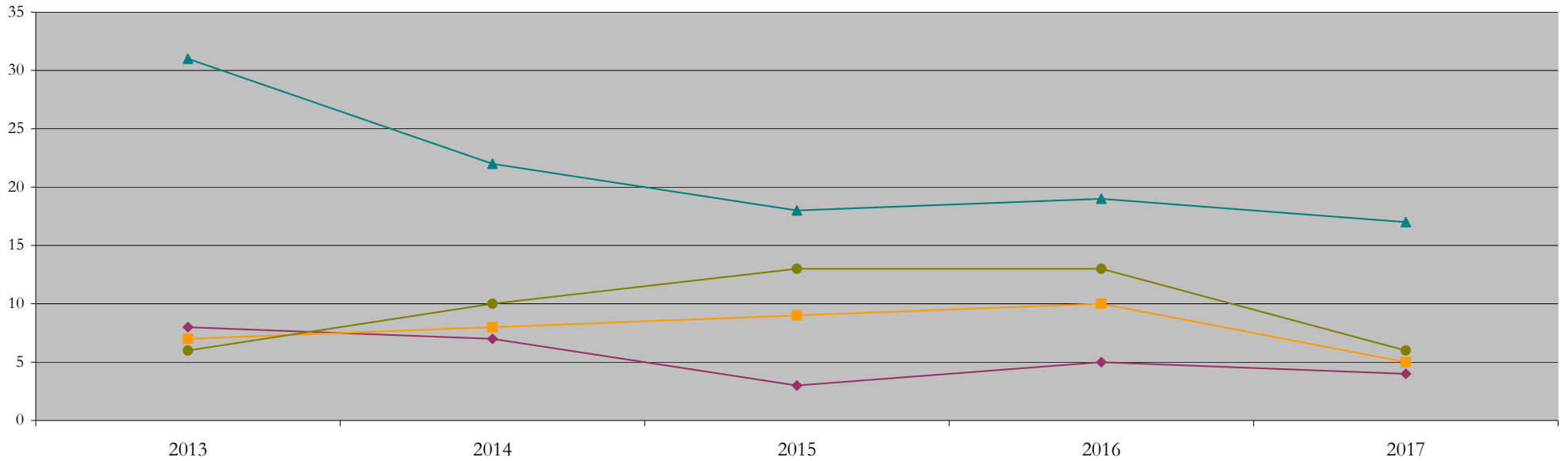
Total Enrollment (includes secondary curriculum)

by Race/Ethnicity

Energy_Engineering_MEE [20FS5085MEE]

Fall 2013 through Fall 2017

Fall Semester Year	Total	Under Represented Minorities (URM)																		
		American Indian or Alaska Native		Black or African American		Hispanic / Latino		URM Total		Asian		Native Hawaiian or Pacific Islander		White		Two or More Races		International		Race/Eth Not Reported
		Count	%	Count	%	Count	%	Count	%	Count	%	Count	%	Count	%	Count	%	Count	%	Count
2013	57	0	0.0	5	8.8	3	5.3	8	14.0	7	12.3	0	0.0	31	54.4	1	1.8	6	10.5	4
2014	51	0	0.0	4	7.8	3	5.9	7	13.7	8	15.7	0	0.0	22	43.1	1	2.0	10	19.6	3
2015	44	0	0.0	1	2.3	2	4.5	3	6.8	9	20.5	0	0.0	18	40.9	0	0.0	13	29.5	1
2016	49	0	0.0	3	6.1	2	4.1	5	10.2	10	20.4	0	0.0	19	38.8	2	4.1	13	26.5	0
2017	34	0	0.0	2	5.9	2	5.9	4	11.8	5	14.7	0	0.0	17	50.0	2	5.9	6	17.6	0



Notes: 1) URM stands for Under-Represented Minority and includes American Indian or Alaska Native; Black or African-American; Hispanic / Latino race/ethnicity groups
 2) Individual URM groups, Native Hawaiian Pacific Islander, Two or More Races, and Other race/ethnicity categories left off this chart due to relatively low numbers

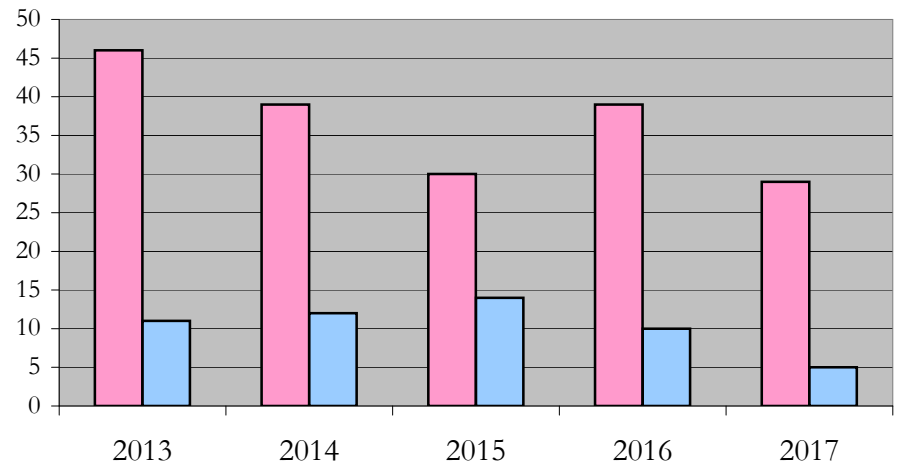
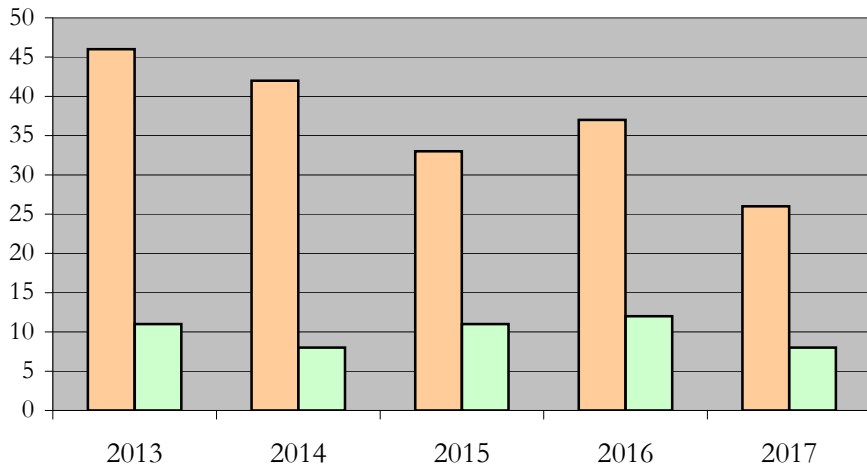
Total Enrollment (includes secondary curriculum)

by Student Type, Gender, and Enrollment Time

Energy_Engineering_MEE [20FS5085MEE]

Fall 2013 through Fall 2017

Fall Semester Year	Total	New		Continuing		Male		Female		Gender Not Reported	Part-time		Full-time	
		Count	%	Count	%	Count	%	Count	%		Count	%	Count	%
2013	57	18	31.6	39	68.4	46	80.7	11	19.3	0	46	80.7	11	19.3
2014	51	18	35.3	33	64.7	42	82.4	8	15.7	1	39	76.5	12	23.5
2015	44	17	38.6	27	61.4	33	75.0	11	25.0	0	30	68.2	14	31.8
2016	49	20	40.8	29	59.2	37	75.5	12	24.5	0	39	79.6	10	20.4
2017	34	9	26.5	25	73.5	26	76.5	8	23.5	0	29	85.3	5	14.7



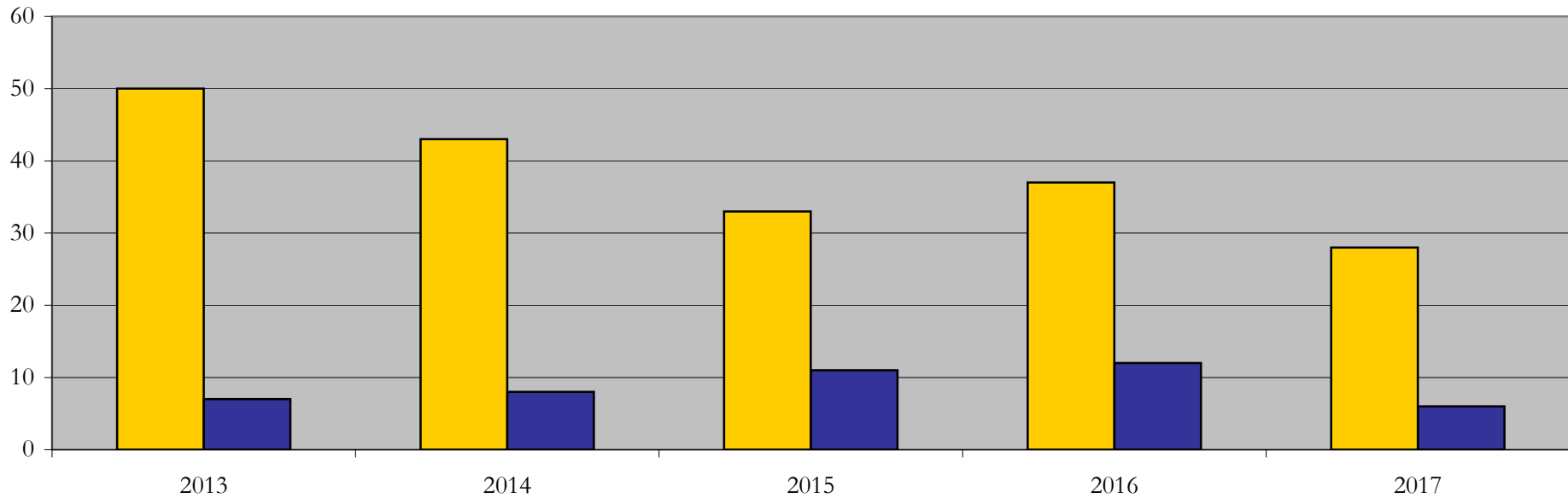
Enrollment & Degrees Conferred

by Primary/Secondary, Average Age, State Residency

Energy_Engineering_MEE [20FS5085MEE]

Fall 2013 through Fall 2017

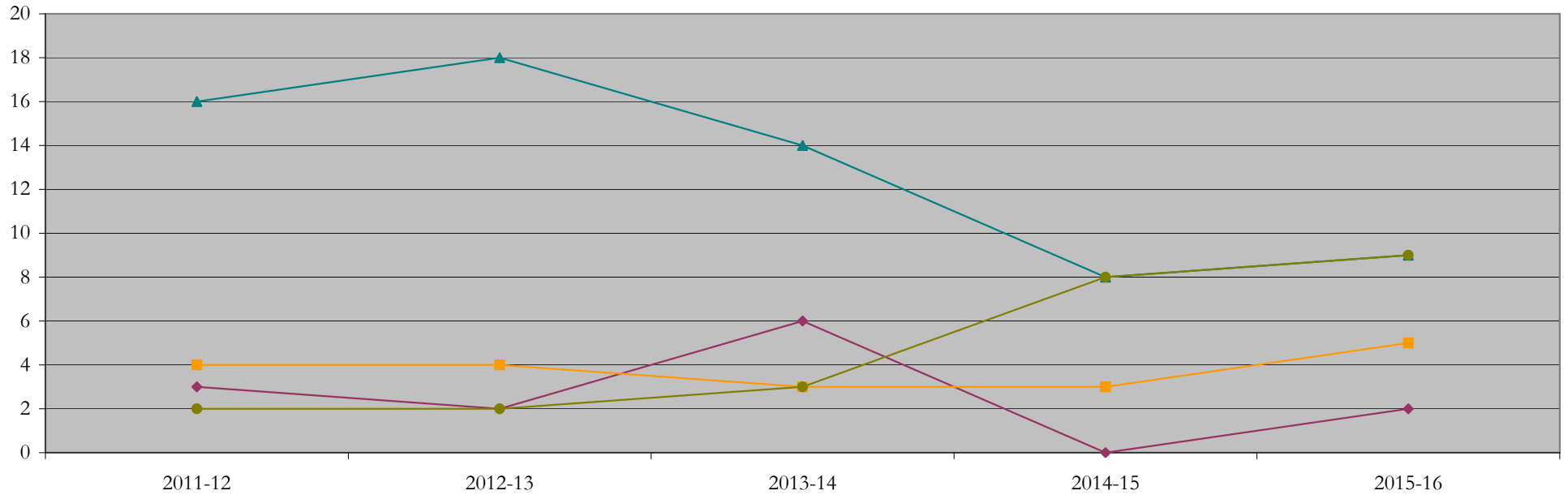
Fall Semester Year	Enrollment			Average Age			State Residency of Total Enrollment					
	Total	Primary	Secondary	Fall New Enrollment	Fall Continuing Enrollment	Academic Year Graduating Class	Residents			Non-Residents		
							Total Enrollment	New Enrollment	Continuing Enrollment	Total Enrollment	New Enrollment	Continuing Enrollment
2013	57	57	0	27	30	31	50	15	35	7	3	4
2014	51	51	0	27	29	28	43	14	29	8	4	4
2015	44	44	0	28	29	26	33	12	21	11	5	6
2016	49	49	0	29	29	30	37	15	22	12	5	7
2017	34	34	0	24	32	27	28	7	21	6	2	4



Degrees Conferred by Race/Ethnicity

Energy_Engineering_MEE [20FS5085MEE]
AY2011-12 through 2015-16

Academic Year	Total	Under Represented Minorities (URM)								Asian		Native Hawaiian or Pacific		White		Two or More Races		International		Not Reported
		American Indian or Alaska Native		Black or African American		Hispanic / Latino		URM Total		Count	%	Count	%	Count	%	Count	%	Count	%	Count
		Count	%	Count	%	Count	%	Count	%											
2012 - 2013	25	0	0.0	1	4.0	2	8.0	3	12.0	4	16.0	0	0.0	16	64.0	0	0.0	2	8.0	0
2013 - 2014	28	0	0.0	0	0.0	2	7.1	2	7.1	4	14.3	0	0.0	18	64.3	0	0.0	2	7.1	2
2014 - 2015	29	0	0.0	5	17.2	1	3.4	6	20.7	3	10.3	0	0.0	14	48.3	1	3.4	3	10.3	2
2015 - 2016	20	0	0.0	0	0.0	0	0.0	0	0.0	3	15.0	0	0.0	8	40.0	0	0.0	8	40.0	1
2016 - 2017	25	0	0.0	1	4.0	1	4.0	2	8.0	5	20.0	0	0.0	9	36.0	0	0.0	9	36.0	0



Notes: 1) URM stands for Under-Represented Minority and includes American Indian or Alaska Native; Black or African-American; Hispanic / Latino race/ethnicity groups
2) Individual URM groups, Native Hawaiian Pacific Islander, Two or More Races, and Other race/ethnicity categories left off this chart due to relatively low numbers

Degrees Conferred

by Gender

Energy_Engineering_MEE [20FS5085MEE]

AY2011-12 through 2015-16

Academic Year	Total	Male		Female		Not Reported
		Count	%	Count	%	
2012 - 2013	25	23	92.0	2	8.0	0
2013 - 2014	28	24	85.7	4	14.3	0
2014 - 2015	28	22	78.6	6	21.4	0
2015 - 2016	20	16	80.0	4	20.0	0
2016 - 2017	25	18	72.0	7	28.0	0

