

Matriculation

Diversity Pipeline

Chemical_Engineering_MS [20FS0300MS]

Fall 2014 through Fall 2018

Fall Semester Year	Applied					Admitted					Non-URM Admitted to Applied Yield %	URM Admitted to Applied Yield %	New Enrollment					Non-URM Enrolled to Admitted Yield %	URM Enrolled to Admitted Yield %	Total Enrollment				
	Grand Total	Non-URM Total		URM Total		Grand Total	Non-URM Total		URM Total				Grand Total	Non-URM Total		URM Total				Grand Total	Non-URM Total		URM Total	
		Count	%	Count	%		Count	%	Count	%				Count	%	Count	%				Count	%	Count	%
	Count	%	Count	%	Count	%	Count	%	Count	%			Count	%	Count	%	Count			%	Count	%	Count	%
2014	87	84	96.6%	3	3.4%	55	52	94.5%	3	5.5%	61.9%	100.0%	9	7	77.8%	2	22.2%	13.5%	66.7%	16	12	75.0%	4	25.0%
2015	98	97	99.0%	1	1.0%	75	74	98.7%	1	1.3%	76.3%	100.0%	15	14	93.3%	1	6.7%	18.9%	100.0%	29	25	86.2%	4	13.8%
2016	108	104	96.3%	4	3.7%	78	75	96.2%	3	3.8%	72.1%	75.0%	17	16	94.1%	1	5.9%	21.3%	33.3%	37	35	94.6%	2	5.4%
2017	94	94	100.0%	0	0.0%	74	74	100.0%	0	0.0%	78.7%	0.0%	7	7	100.0%	0	0.0%	9.5%	0.0%	31	28	90.3%	3	9.7%
2018	62	62	100.0%	0	0.0%	56	56	100.0%	0	0.0%	90.3%	0.0%	6	6	100.0%	0	0.0%	10.7%	0.0%	19	17	89.5%	2	10.5%
Average	90	88	98.2%	2	1.8%	68	66	97.9%	1	2.1%	75.1%	87.5%	11	10	92.6%	1	7.4%	15.1%	57.1%	26	23	88.6%	3	11.4%

Note: URM stands for Under-Represented Minority and includes American Indian or Alaska Native; Black or African-American; Hispanic / Latino race/ethnicity groups

Applications, Admission, & New Enrollment Yields

by Race/Ethnicity & Gender

Chemical_Engineering_MS [20FS0300MS]

Fall 2014 through Fall 2018

	Fall Semester Year	Total		Under Represented Minorities (URM)										Race/Eth Not Reported		Male		Female									
				American Indian or Alaska Native		Black or African American		Hispanic / Latino		URM Total		Asian								Native Hawaiian or Pacific Islander		White		Two or More Races		International	
		Count	% Yield	Count	% Yield	Count	% Yield	Count	% Yield	Count	% Yield	Count	% Yield	Count	% Yield	Count	% Yield	Count	% Yield	Count	% Yield	Count	% Yield	Count	% Yield		
Applied	2014	87		0		1		2		3		3		0		7		0		74		0		54		33	
	2015	98		0		0		1		1		4		0		10		0		83		0		59		39	
	2016	108		0		2		2		4		4		0		12		0		87		1		76		32	
	2017	94		0		0		0		0		6		0		7		0		81		0		64		30	
	2018	62		0		0		0		0		2		0		3		0		51		6		34		28	
		Count	% Yield	Count	% Yield	Count	% Yield	Count	% Yield	Count	% Yield	Count	% Yield	Count	% Yield	Count	% Yield	Count	% Yield	Count	% Yield	Count	% Yield	Count	% Yield	Count	% Yield
Admitted	2014	55	63.2	0	0.0	1	100.0	2	100.0	3	100.0	2	66.7	0	0.0	3	42.9	0	0.0	47	63.5	0		25	46.3	30	90.9
	2015	75	76.5	0	0.0	0	0.0	1	100.0	1	100.0	4	100.0	0	0.0	9	90.0	0	0.0	61	73.5	0		42	71.2	33	84.6
	2016	78	72.2	0	0.0	1	50.0	2	100.0	3	75.0	3	75.0	0	0.0	9	75.0	0	0.0	63	72.4	0		53	69.7	25	78.1
	2017	74	78.7	0	0.0	0	0.0	0	0.0	0	0.0	4	66.7	0	0.0	5	71.4	0	0.0	65	80.2	0		47	73.4	27	90.0
	2018	56	90.3	0	0.0	0	0.0	0	0.0	0	0.0	2	100.0	0	0.0	2	66.7	0	0.0	46	90.2	6		30	88.2	26	92.9
		Count	% Yield	Count	% Yield	Count	% Yield	Count	% Yield	Count	% Yield	Count	% Yield	Count	% Yield	Count	% Yield	Count	% Yield	Count	% Yield	Count	% Yield	Count	% Yield	Count	% Yield
Enrolled	2014	9	16.4	0	0.0	0	0.0	2	100.0	2	66.7	0	0.0	0	0.0	0	0.0	0	0.0	7	14.9	0		4	16.0	5	16.7
	2015	15	20.0	0	0.0	0	0.0	1	100.0	1	100.0	3	75.0	0	0.0	1	11.1	0	0.0	10	16.4	0		8	19.0	7	21.2
	2016	17	21.8	0	0.0	1	100.0	0	0.0	1	33.3	1	33.3	0	0.0	4	44.4	0	0.0	11	17.5	0		14	26.4	3	12.0
	2017	7	9.5	0	0.0	0	0.0	0	0.0	0	0.0	1	25.0	0	0.0	1	20.0	0	0.0	5	7.7	0		3	6.4	4	14.8
	2018	6	10.7	0	0.0	0	0.0	0	0.0	0	0.0	0	0.0	0	0.0	1	50.0	0	0.0	5	10.9	0		4	13.3	2	7.7

Notes:

- 1) URM stands for Under-Represented Minority and includes American Indian or Alaska Native; Black or African-American; Hispanic / Latino race/ethnicity groups
- 2) Unreported Gender identification is not shown; Male and Female total may not match Total
- 3) In rare situations, the "% Yield" columns may be greater than 100. There are three potential reasons for this:
 - a) Students that received Graduate College approved transfers may not have an admission record for the program that they enrolled into.
 - b) Students with a secondary curriculum enrollment may not have an admission record for that secondary program.
 - c) Students who were newly enrolled in the summer term prior to the fall were added to the fall new enrollment totals.

Applications, Admission, & New Enrollment Yields, cont. by Race/Ethnicity & Gender

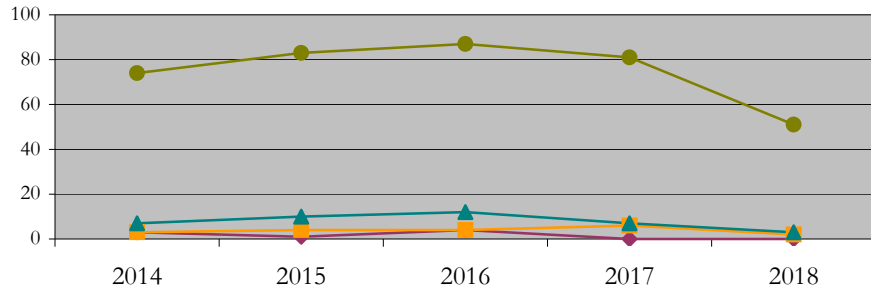
Chemical_Engineering_MS [20FS0300MS]

Fall 2014 through Fall 2018

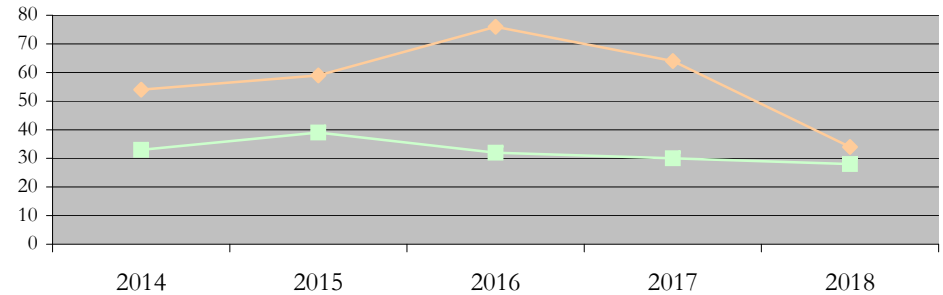
◆ URM Total ■ Asian ▲ White ● International

◆ Male ■ Female

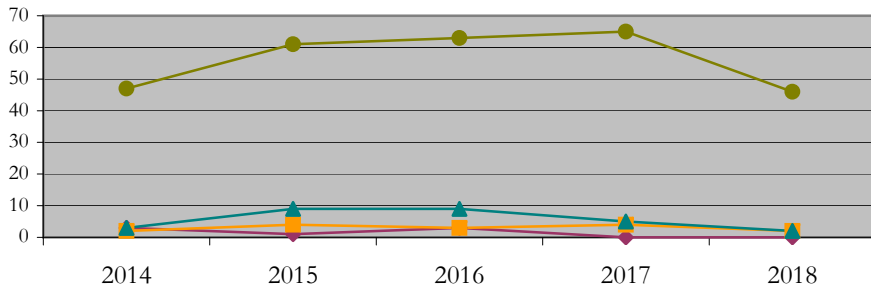
Applications by Race/Ethnicity



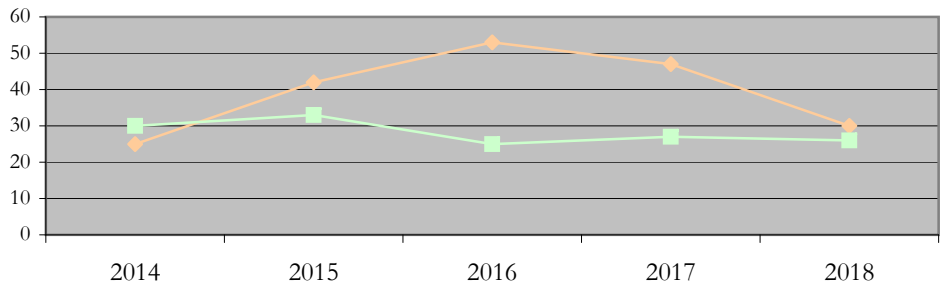
Applications by Gender



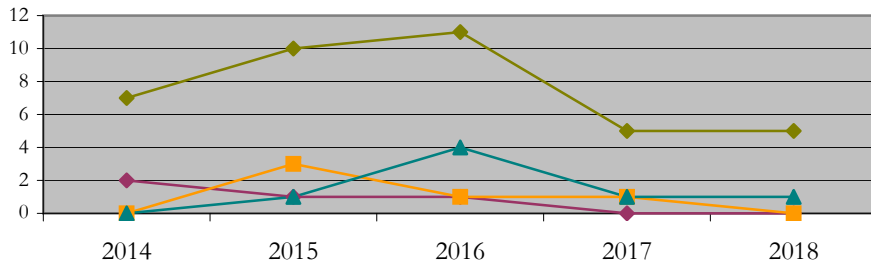
Admissions by Race/Ethnicity



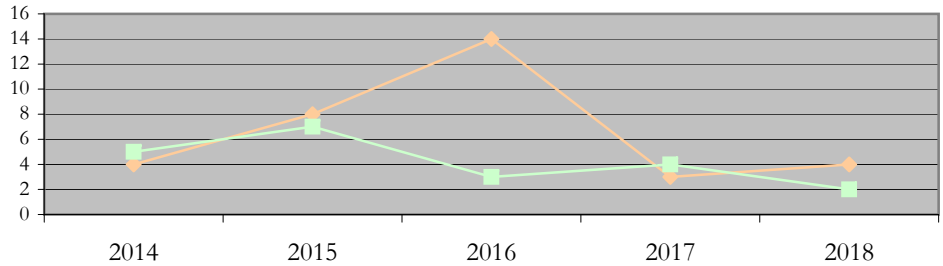
Admissions by Gender



New Enrollments by Race/Ethnicity



New Enrollments by Gender



Notes: 1) URM stands for Under-Represented Minority and includes American Indian or Alaska Native; Black or African-American; Hispanic / Latino race/ethnicity groups
2) Individual URM groups, Native Hawaiian Pacific Islander, Two or More Races, and Other race/ethnicity categories left off these charts due to relatively low numbers

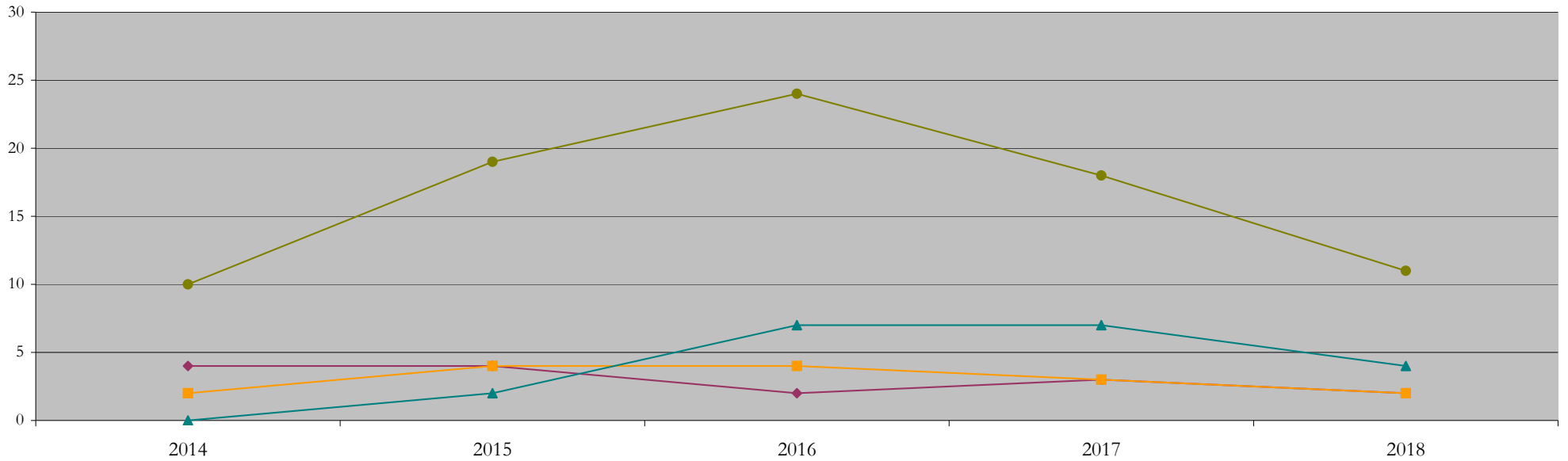
Total Enrollment (includes secondary curriculum)

by Race/Ethnicity

Chemical_Engineering_MS [20FS0300MS]

Fall 2014 through Fall 2018

Fall Semester Year	Total	Under Represented Minorities (URM)										Asian	Native Hawaiian or Pacific Islander	White		Two or More Races		International		Race/Eth Not Reported
		American Indian or Alaska Native		Black or African American		Hispanic / Latino		URM Total												
		Count	%	Count	%	Count	%	Count	%	Count	%			Count	%	Count	%	Count		
2014	16	0	0.0	0	0.0	4	25.0	4	25.0	2	12.5	0	0.0	0	0.0	0	0.0	10	62.5	0
2015	29	0	0.0	0	0.0	4	13.8	4	13.8	4	13.8	0	0.0	2	6.9	0	0.0	19	65.5	0
2016	37	0	0.0	1	2.7	1	2.7	2	5.4	4	10.8	0	0.0	7	18.9	0	0.0	24	64.9	0
2017	31	0	0.0	1	3.2	2	6.5	3	9.7	3	9.7	0	0.0	7	22.6	0	0.0	18	58.1	0
2018	19	0	0.0	1	5.3	1	5.3	2	10.5	2	10.5	0	0.0	4	21.1	0	0.0	11	57.9	0



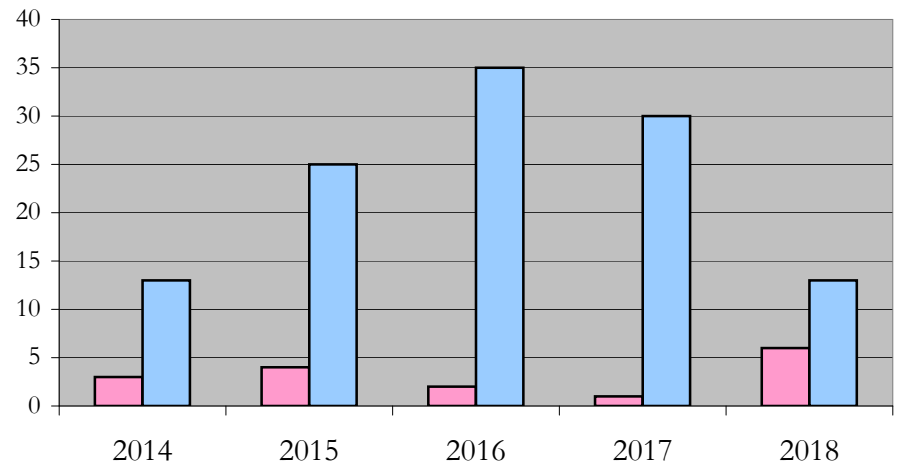
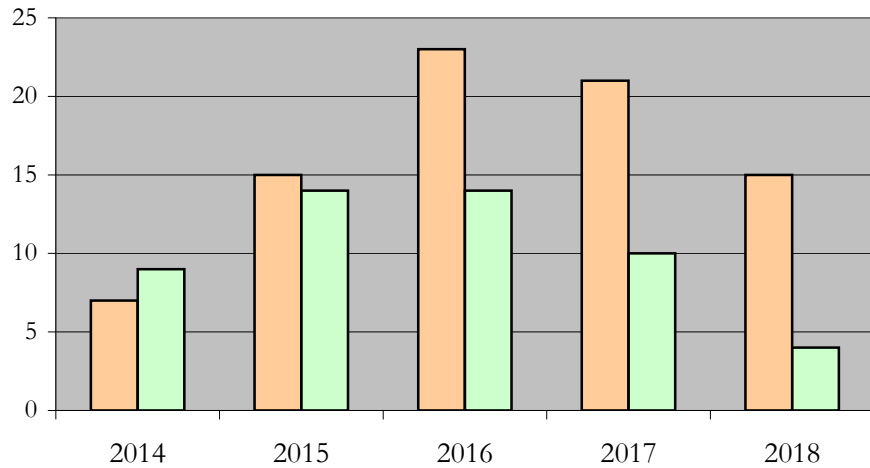
Notes: 1) URM stands for Under-Represented Minority and includes American Indian or Alaska Native; Black or African-American; Hispanic / Latino race/ethnicity groups
 2) Individual URM groups, Native Hawaiian Pacific Islander, Two or More Races, and Other race/ethnicity categories left off this chart due to relatively low numbers

**Total Enrollment (includes secondary curriculum)
by Student Type, Gender, and Enrollment Time**

Chemical_Engineering_MS [20FS0300MS]

Fall 2014 through Fall 2018

Fall Semester Year	Total	New		Continuing		Male		Female		Gender Not Reported	Part-time		Full-time	
		Count	%	Count	%	Count	%	Count	%		Count	%	Count	%
2014	16	9	56.3	7	43.8	7	43.8	9	56.3	0	3	18.8	13	81.3
2015	29	15	51.7	14	48.3	15	51.7	14	48.3	0	4	13.8	25	86.2
2016	37	17	45.9	20	54.1	23	62.2	14	37.8	0	2	5.4	35	94.6
2017	31	7	22.6	24	77.4	21	67.7	10	32.3	0	1	3.2	30	96.8
2018	19	6	31.6	13	68.4	15	78.9	4	21.1	0	6	31.6	13	68.4



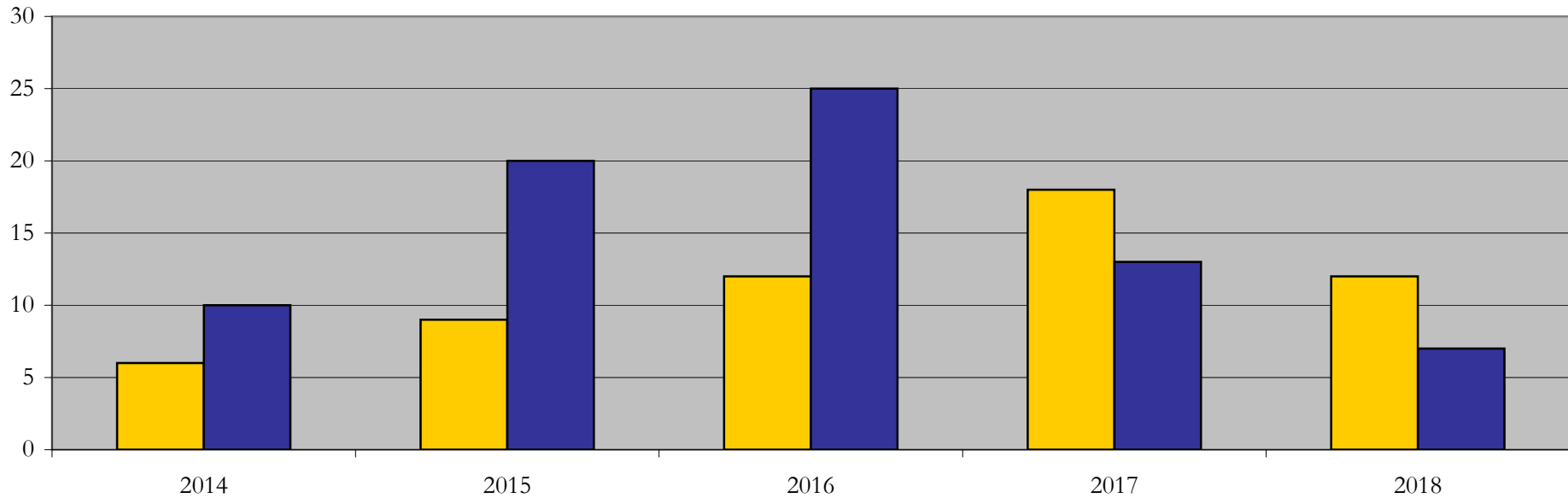
Enrollment & Degrees Conferred

by Primary/Secondary, Average Age, State Residency

Chemical_Engineering_MS [20FS0300MS]

Fall 2014 through Fall 2018

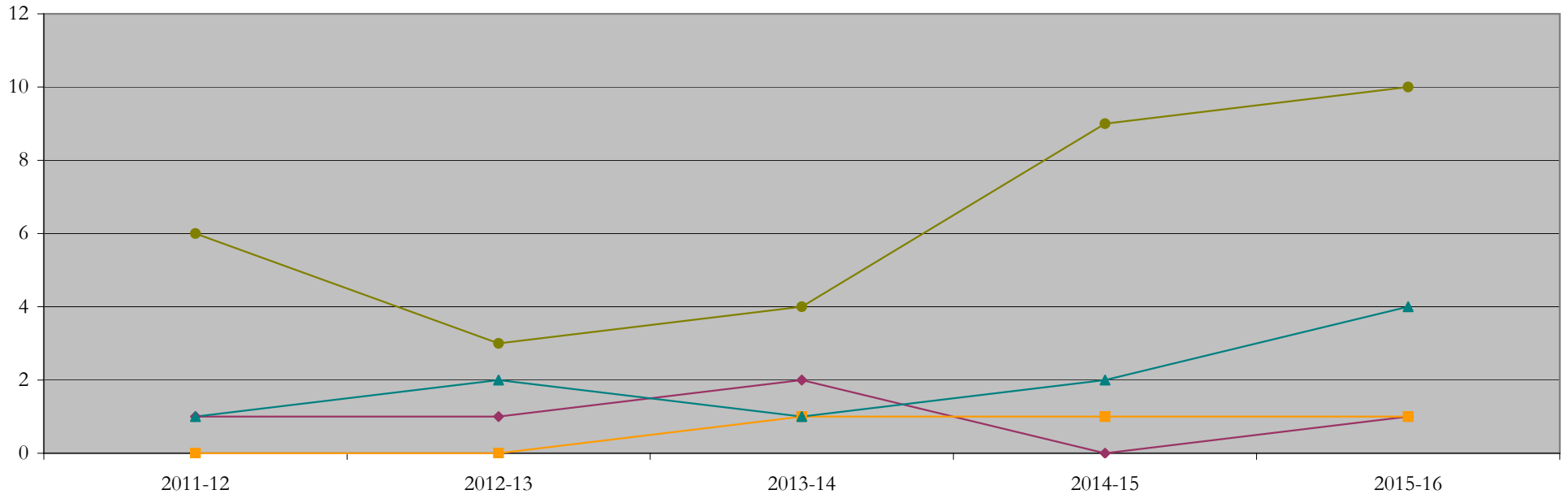
Fall Semester Year	Enrollment			Average Age			State Residency of Total Enrollment					
	Total	Primary	Secondary	Fall New Enrollment	Fall Continuing Enrollment	Academic Year Graduating Class	Residents			Non-Residents		
							Total Enrollment	New Enrollment	Continuing Enrollment	Total Enrollment	New Enrollment	Continuing Enrollment
2014	16	16	0	23	25	23	6	3	3	10	6	4
2015	29	29	0	24	26	24	9	3	6	20	12	8
2016	37	37	0	24	25	26	12	6	6	25	11	14
2017	31	31	0	25	25	24	18	3	15	13	4	9
2018	19	19	0	24	27	23	12	3	9	7	3	4



Degrees Conferred by Race/Ethnicity

Chemical_Engineering_MS [20FS0300MS]
AY2011-12 through 2015-16

Academic Year	Total	Under Represented Minorities (URM)								Asian		Native Hawaiian or Pacific		White		Two or More Races		International		Not Reported
		American Indian or Alaska Native		Black or African American		Hispanic / Latino		URM Total		Count	%	Count	%	Count	%	Count	%	Count	%	
		Count	%	Count	%	Count	%	Count	%											
2013 - 2014	8	0	0.0	0	0.0	1	12.5	1	12.5	0	0.0	0	0.0	1	12.5	0	0.0	6	75.0	0
2014 - 2015	6	0	0.0	0	0.0	1	16.7	1	16.7	0	0.0	0	0.0	2	33.3	0	0.0	3	50.0	0
2015 - 2016	8	0	0.0	0	0.0	2	25.0	2	25.0	1	12.5	0	0.0	1	12.5	0	0.0	4	50.0	0
2016 - 2017	12	0	0.0	0	0.0	0	0.0	0	0.0	1	8.3	0	0.0	2	16.7	0	0.0	9	75.0	0
2017 - 2018	16	0	0.0	0	0.0	1	6.3	1	6.3	1	6.3	0	0.0	4	25.0	0	0.0	10	62.5	0



Notes: 1) URM stands for Under-Represented Minority and includes American Indian or Alaska Native; Black or African-American; Hispanic / Latino race/ethnicity groups
2) Individual URM groups, Native Hawaiian Pacific Islander, Two or More Races, and Other race/ethnicity categories left off this chart due to relatively low numbers

Degrees Conferred

by Gender

Chemical_Engineering_MS [20FS0300MS]

AY2011-12 through 2015-16

Academic Year	Total	Male		Female		Not Reported
		Count	%	Count	%	
2013 - 2014	8	7	87.5	1	12.5	0
2014 - 2015	6	4	66.7	2	33.3	0
2015 - 2016	8	4	50.0	4	50.0	0
2016 - 2017	12	6	50.0	6	50.0	0
2017 - 2018	16	8	50.0	8	50.0	0

