

Matriculation

Diversity Pipeline

Bioengineering_MS [20FS0408MS]

Fall 2013 through Fall 2017

Fall Semester Year	Applied					Admitted					Non-URM Admitted to Applied Yield %	URM Admitted to Applied Yield %	New Enrollment					Non-URM Enrolled to Admitted Yield %	URM Enrolled to Admitted Yield %	Total Enrollment				
	Grand Total	Non-URM Total		URM Total		Grand Total	Non-URM Total		URM Total				Grand Total	Non-URM Total		URM Total				Grand Total	Non-URM Total		URM Total	
		Count	%	Count	%		Count	%	Count	%				Count	%	Count	%				Count	%	Count	%
	Count	%	Count	%	Count	%	Count	%	Count	%			Count	%	Count	%	Count			%	Count	%	Count	%
2013	149	141	94.6%	8	5.4%	108	103	95.4%	5	4.6%	73.0%	62.5%	30	28	93.3%	2	6.7%	27.2%	40.0%	61	59	96.7%	2	3.3%
2014	99	91	91.9%	8	8.1%	53	48	90.6%	5	9.4%	52.7%	62.5%	15	11	73.3%	4	26.7%	22.9%	80.0%	53	47	88.7%	6	11.3%
2015	125	119	95.2%	6	4.8%	84	80	95.2%	4	4.8%	67.2%	66.7%	33	32	97.0%	1	3.0%	40.0%	25.0%	59	53	89.8%	6	10.2%
2016	128	122	95.3%	6	4.7%	88	83	94.3%	5	5.7%	68.0%	83.3%	19	17	89.5%	2	10.5%	20.5%	40.0%	67	63	94.0%	4	6.0%
2017	101	95	94.1%	6	5.9%	72	67	93.1%	5	6.9%	70.5%	83.3%	14	12	85.7%	2	14.3%	17.9%	40.0%	52	48	92.3%	4	7.7%
Average	120	114	94.4%	7	5.6%	81	76	94.1%	5	5.9%	67.1%	70.6%	22	20	90.1%	2	9.9%	26.2%	45.8%	58	54	92.5%	4.4	7.5%

Note: URM stands for Under-Represented Minority and includes American Indian or Alaska Native; Black or African-American; Hispanic / Latino race/ethnicity groups

Applications, Admission, & New Enrollment Yields

by Race/Ethnicity & Gender

Bioengineering_MS [20FS0408MS]

Fall 2013 through Fall 2017

	Fall Semester Year	Total	Under Represented Minorities (URM)										Race/Eth Not Reported	Male	Female												
			American Indian or Alaska Native		Black or African American		Hispanic / Latino		URM Total		Asian					Native Hawaiian or Pacific Islander		White		Two or More Races		International					
		Count	% Yield	Count	% Yield	Count	% Yield	Count	% Yield	Count	% Yield	Count	% Yield	Count	% Yield	Count	% Yield	Count	% Yield	Count	% Yield	Count	% Yield	Count	% Yield		
Applied	2013	149		0		2		6		8		22		0		24		2		92		1		88		61	
	2014	99		0		3		5		8		12		0		13		0		63		3		55		42	
	2015	125		0		3		3		6		11		0		26		1		80		1		56		69	
	2016	128		0		4		2		6		16		0		23		1		81		1		63		65	
	2017	101		0		3		3		6		12		0		16		1		63		3		47		54	
Admitted	2013	108	72.5	0	0.0	0	0.0	5	83.3	5	62.5	17	77.3	0	0.0	21	87.5	2	100.0	63	68.5	0		61	69.3	47	77.0
	2014	53	53.5	0	0.0	1	33.3	4	80.0	5	62.5	7	58.3	0	0.0	10	76.9	0	0.0	30	47.6	1		29	52.7	24	57.1
	2015	84	67.2	0	0.0	1	33.3	3	100.0	4	66.7	9	81.8	0	0.0	20	76.9	1	100.0	49	61.3	1		39	69.6	45	65.2
	2016	88	68.8	0	0.0	3	75.0	2	100.0	5	83.3	11	68.8	0	0.0	21	91.3	1	100.0	49	60.5	1		43	68.3	45	69.2
	2017	72	71.3	0	0.0	2	66.7	3	100.0	5	83.3	9	75.0	0	0.0	11	68.8	1	100.0	43	68.3	3		34	72.3	38	70.4
Enrolled	2013	30	27.8	0	0.0	0	0.0	2	40.0	2	40.0	8	47.1	0	0.0	4	19.0	1	50.0	15	23.8	0		15	24.6	15	31.9
	2014	15	28.3	0	0.0	1	100.0	3	75.0	4	80.0	4	57.1	0	0.0	3	30.0	0	0.0	4	13.3	0		9	31.0	6	25.0
	2015	33	39.3	0	0.0	0	0.0	1	33.3	1	25.0	3	33.3	0	0.0	12	60.0	0	0.0	17	34.7	0		15	38.5	18	40.0
	2016	19	21.6	0	0.0	1	33.3	1	50.0	2	40.0	2	18.2	0	0.0	6	28.6	1	100.0	8	16.3	0		10	23.3	9	20.0
	2017	14	19.4	0	0.0	0	0.0	2	66.7	2	40.0	4	44.4	0	0.0	5	45.5	0	0.0	3	7.0	0		7	20.6	7	18.4

Notes:

- 1) URM stands for Under-Represented Minority and includes American Indian or Alaska Native; Black or African-American; Hispanic / Latino race/ethnicity groups
- 2) Unreported Gender identification is not shown; Male and Female total may not match Total
- 3) In rare situations, the "% Yield" columns may be greater than 100. There are three potential reasons for this:
 - a) Students that received Graduate College approved transfers may not have an admission record for the program that they enrolled into.
 - b) Students with a secondary curriculum enrollment may not have an admission record for that secondary program.
 - c) Students who were newly enrolled in the summer term prior to the fall were added to the fall new enrollment totals.

Applications, Admission, & New Enrollment Yields, cont. by Race/Ethnicity & Gender

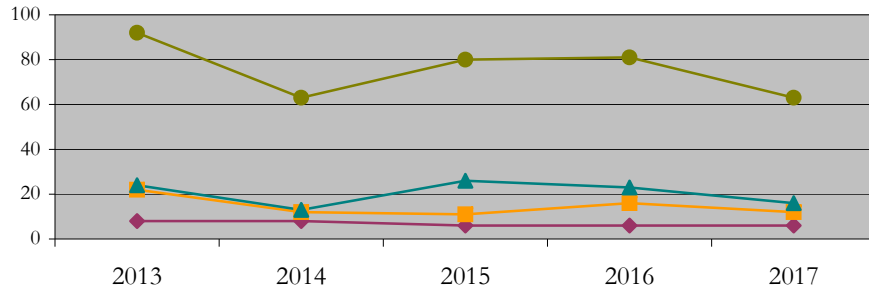
Bioengineering_MS [20FS0408MS]

Fall 2013 through Fall 2017

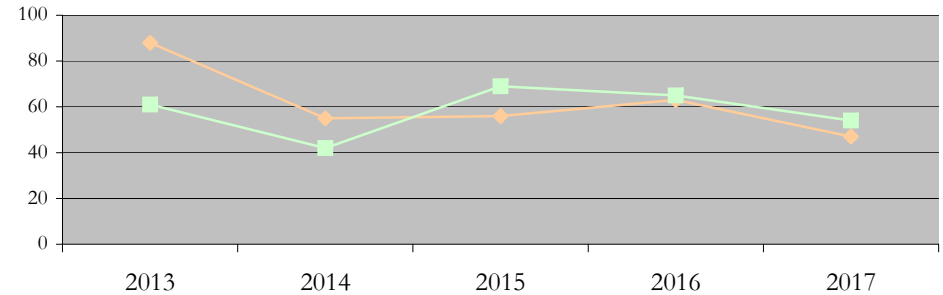
◆ URM Total ■ Asian ▲ White ● International

◆ Male ■ Female

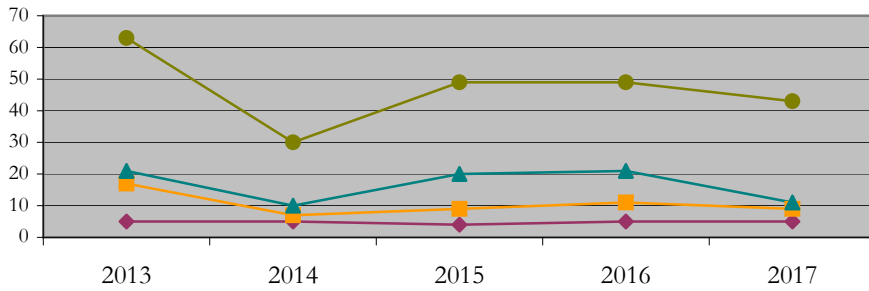
Applications by Race/Ethnicity



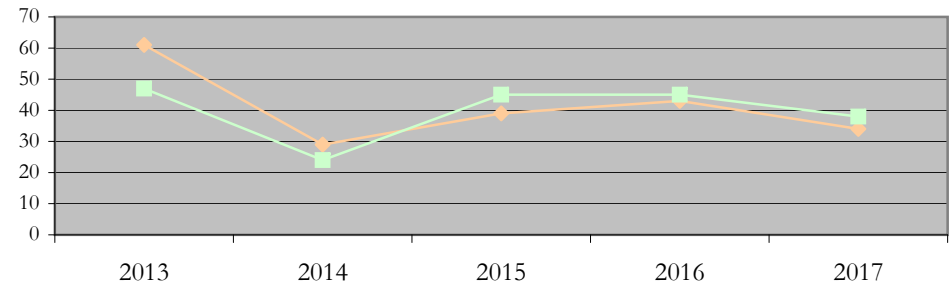
Applications by Gender



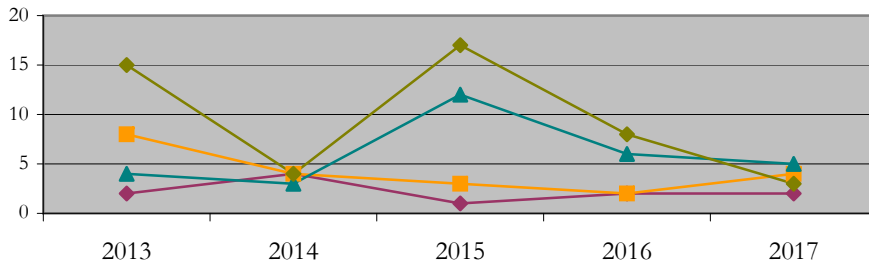
Admissions by Race/Ethnicity



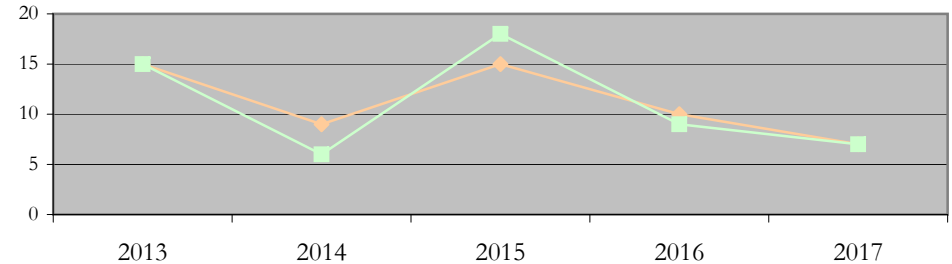
Admissions by Gender



New Enrollments by Race/Ethnicity



New Enrollments by Gender



Notes: 1) URM stands for Under-Represented Minority and includes American Indian or Alaska Native; Black or African-American; Hispanic / Latino race/ethnicity groups
2) Individual URM groups, Native Hawaiian Pacific Islander, Two or More Races, and Other race/ethnicity categories left off these charts due to relatively low numbers

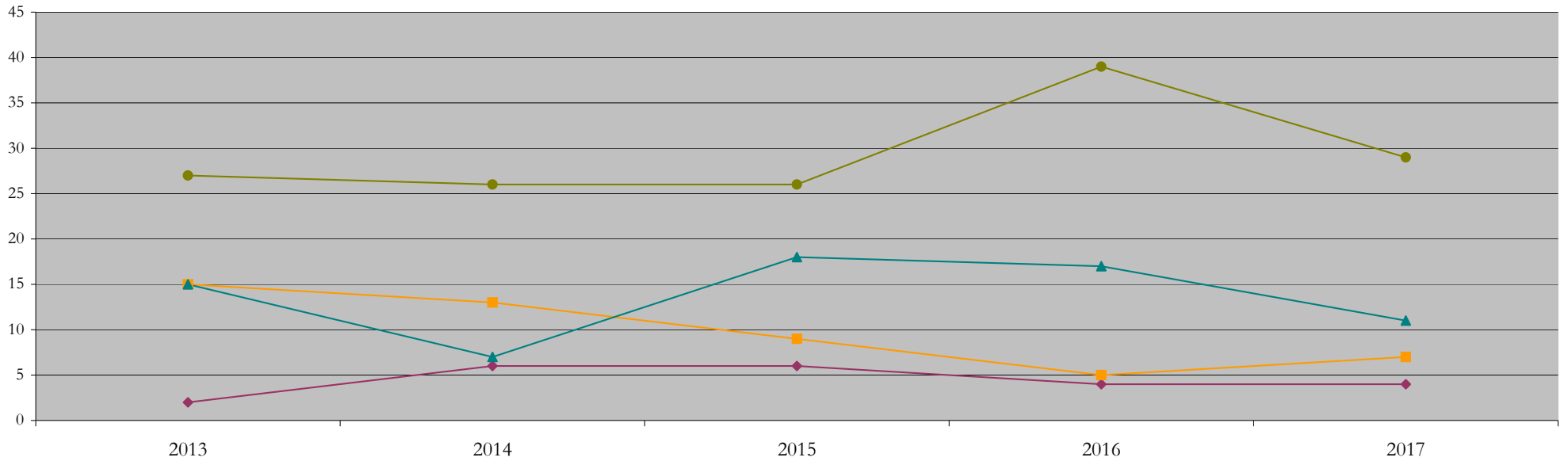
Total Enrollment (includes secondary curriculum)

by Race/Ethnicity

Bioengineering_MS [20FS0408MS]

Fall 2013 through Fall 2017

Fall Semester Year	Total	Under Represented Minorities (URM)										Native Hawaiian or Pacific Islander	White		Two or More Races		International		Race/Eth Not Reported	
		American Indian or Alaska Native		Black or African American		Hispanic / Latino		URM Total		Asian			Count	%	Count	%	Count	%	Count	
		Count	%	Count	%	Count	%	Count	%	Count	%		Count	%	Count	%	Count	%	Count	
2013	61	0	0.0	0	0.0	2	3.3	2	3.3	15	24.6	0	0.0	15	24.6	2	3.3	27	44.3	0
2014	53	0	0.0	1	1.9	5	9.4	6	11.3	13	24.5	0	0.0	7	13.2	1	1.9	26	49.1	0
2015	59	0	0.0	1	1.7	5	8.5	6	10.2	9	15.3	0	0.0	18	30.5	0	0.0	26	44.1	0
2016	67	0	0.0	1	1.5	3	4.5	4	6.0	5	7.5	0	0.0	17	25.4	1	1.5	39	58.2	1
2017	52	0	0.0	0	0.0	4	7.7	4	7.7	7	13.5	0	0.0	11	21.2	1	1.9	29	55.8	0



Notes: 1) URM stands for Under-Represented Minority and includes American Indian or Alaska Native; Black or African-American; Hispanic / Latino race/ethnicity groups
 2) Individual URM groups, Native Hawaiian Pacific Islander, Two or More Races, and Other race/ethnicity categories left off this chart due to relatively low numbers

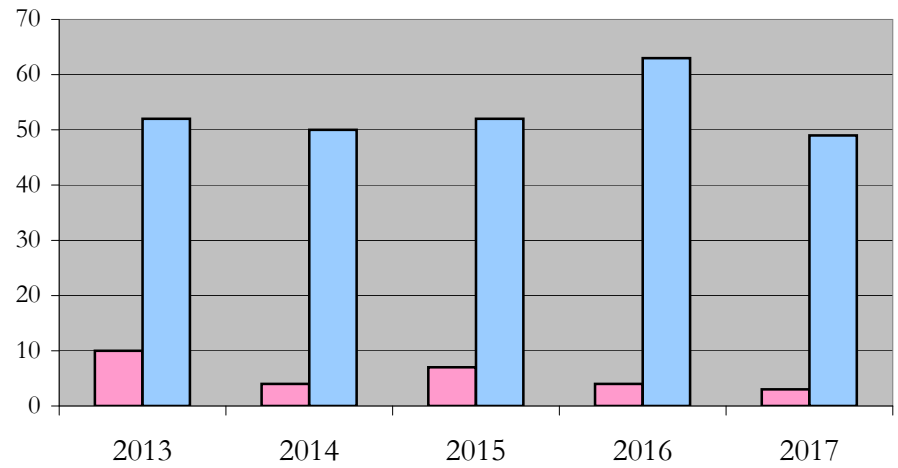
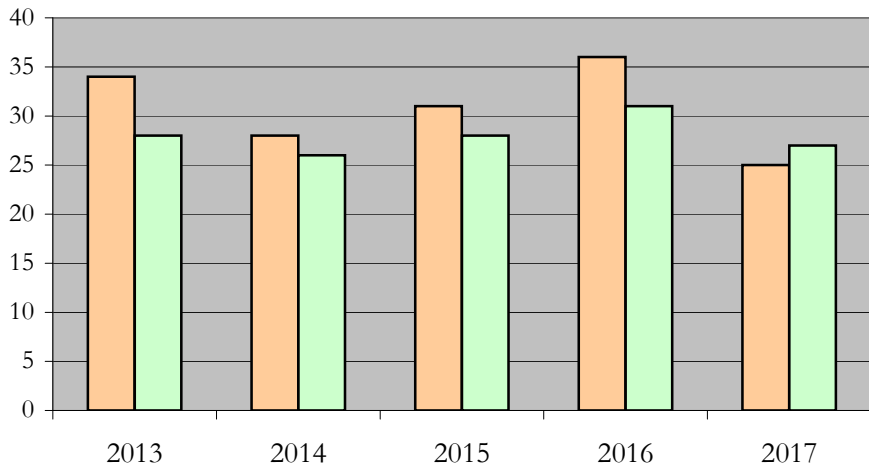
Total Enrollment (includes secondary curriculum)

by Student Type, Gender, and Enrollment Time

Bioengineering_MS [20FS0408MS]

Fall 2013 through Fall 2017

Fall Semester Year	Total	New		Continuing		Male		Female		Gender Not Reported	Part-time		Full-time	
		Count	%	Count	%	Count	%	Count	%	Count	Count	%	Count	%
2013	61	30	49.2	31	50.8	34	55.7	28	45.9	-1	10	16.4	52	85.2
2014	53	15	28.3	38	71.7	28	52.8	26	49.1	-1	4	7.5	50	94.3
2015	59	33	55.9	26	44.1	31	52.5	28	47.5	0	7	11.9	52	88.1
2016	67	19	28.4	48	71.6	36	53.7	31	46.3	0	4	6.0	63	94.0
2017	52	14	26.9	38	73.1	25	48.1	27	51.9	0	3	5.8	49	94.2



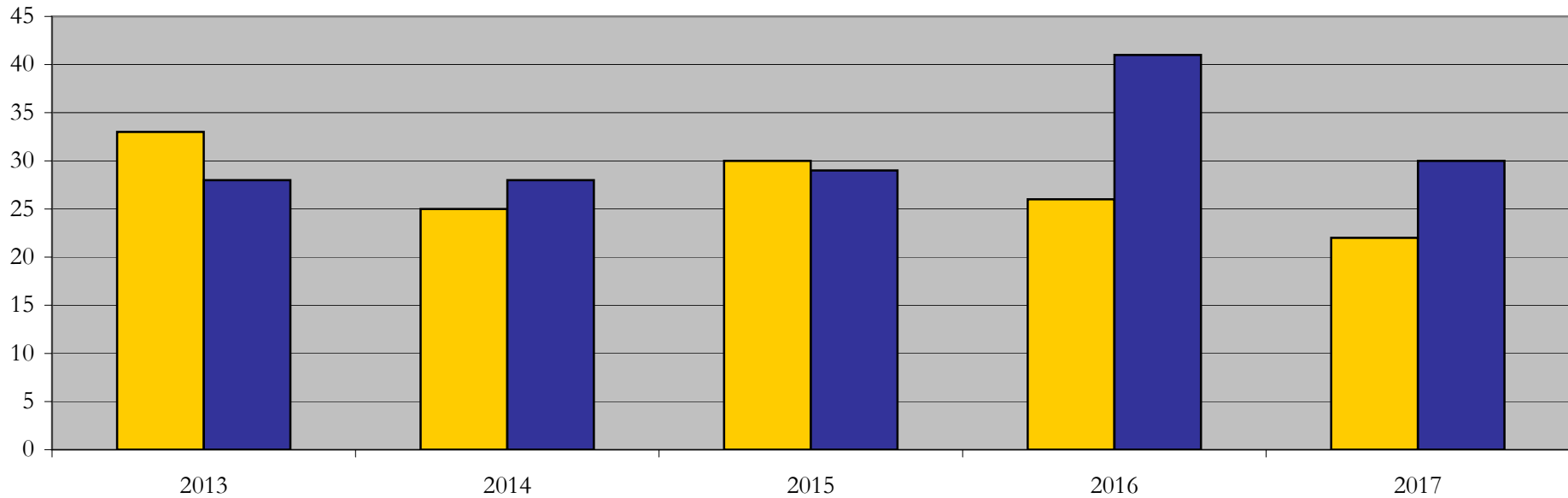
Enrollment & Degrees Conferred

by Primary/Secondary, Average Age, State Residency

Bioengineering_MS [20FS0408MS]

Fall 2013 through Fall 2017

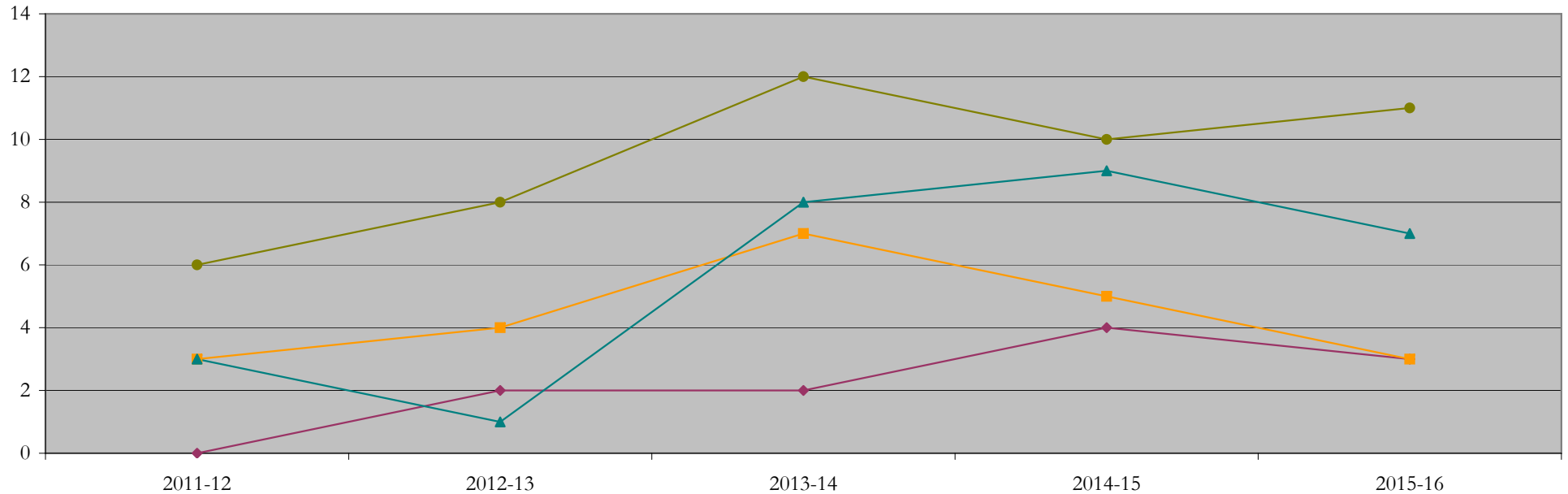
Fall Semester Year	Enrollment			Average Age			State Residency of Total Enrollment					
	Total	Primary	Secondary	Fall New Enrollment	Fall Continuing Enrollment	Academic Year Graduating Class	Residents			Non-Residents		
							Total Enrollment	New Enrollment	Continuing Enrollment	Total Enrollment	New Enrollment	Continuing Enrollment
2013	61	61	0	23	25	24	33	14	19	28	16	12
2014	53	53	0	23	25	24	25	9	16	28	6	22
2015	59	59	0	25	25	24	30	15	15	29	18	11
2016	67	67	0	24	25	26	26	10	16	41	9	32
2017	52	52	0	25	25	24	22	11	11	30	3	27



Degrees Conferred by Race/Ethnicity

Bioengineering_MS [20FS0408MS]
AY2011-12 through 2015-16

Academic Year	Total	Under Represented Minorities (URM)								Asian		Native Hawaiian or Pacific		White		Two or More Races		International		Not Reported
		American Indian or Alaska Native		Black or African American		Hispanic / Latino		URM Total		Count	%	Count	%	Count	%	Count	%	Count	%	Count
		Count	%	Count	%	Count	%	Count	%											
2012 - 2013	14	0	0.0	0	0.0	0	0.0	0	0.0	3	21.4	0	0.0	3	21.4	1	7.1	6	42.9	1
2013 - 2014	17	0	0.0	1	5.9	1	5.9	2	11.8	4	23.5	0	0.0	1	5.9	1	5.9	8	47.1	1
2014 - 2015	29	0	0.0	0	0.0	2	6.9	2	6.9	7	24.1	0	0.0	8	27.6	0	0.0	12	41.4	0
2015 - 2016	29	0	0.0	1	3.4	3	10.3	4	13.8	5	17.2	0	0.0	9	31.0	1	3.4	10	34.5	0
2016 - 2017	25	0	0.0	1	4.0	2	8.0	3	12.0	3	12.0	0	0.0	7	28.0	0	0.0	11	44.0	1



Notes: 1) URM stands for Under-Represented Minority and includes American Indian or Alaska Native; Black or African-American; Hispanic / Latino race/ethnicity groups
2) Individual URM groups, Native Hawaiian Pacific Islander, Two or More Races, and Other race/ethnicity categories left off this chart due to relatively low numbers

Degrees Conferred

by Gender

Bioengineering_MS [20FS0408MS]

AY2011-12 through 2015-16

Academic Year	Total	Male		Female		Not Reported
		Count	%	Count	%	
2012 - 2013	14	4	28.6	10	71.4	0
2013 - 2014	17	6	35.3	11	64.7	0
2014 - 2015	29	12	41.4	17	58.6	0
2015 - 2016	29	15	51.7	14	48.3	0
2016 - 2017	25	13	52.0	12	48.0	0

