

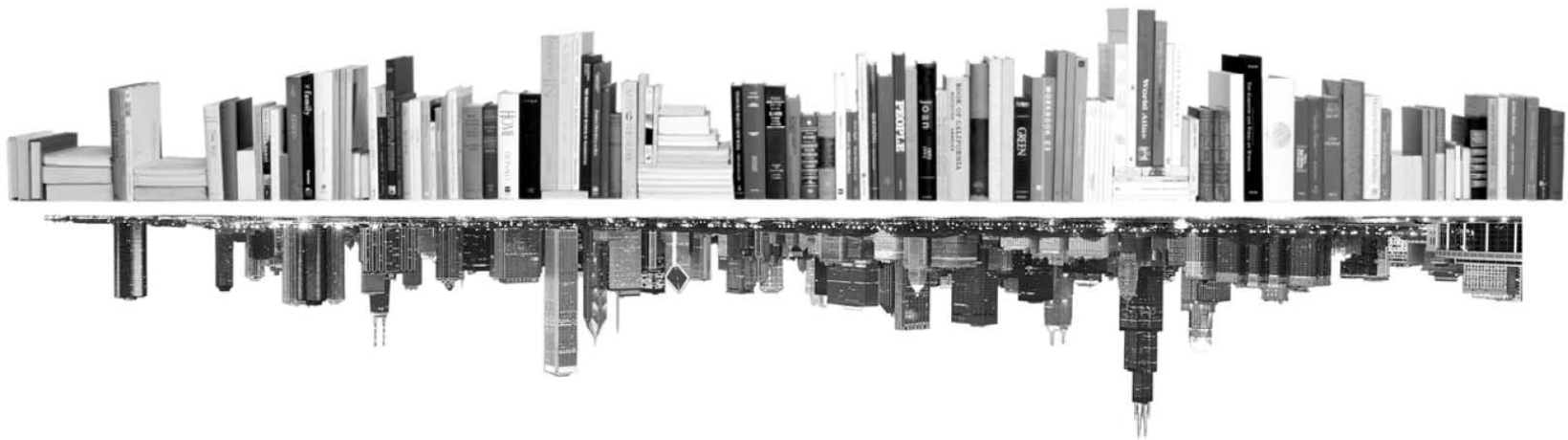
**GRADUATE  
COLLEGE**



---

**ENROLLMENT MANAGEMENT REPORT  
COLLEGE PROFILE  
ENGINEERING  
FALL 2016**

---





---

---

## INTRODUCTION – COLLEGE PROFILE

---

---

The following college profile has been developed to tailor our annual enrollment report to your college’s data.

The college profile report tracks students, not enrollments. This means that students with dual enrollments are reported only once – under their first program.

Kevin Monahan  
Director of Graduate Program Review and Information Systems  
Graduate College, University of Illinois at Chicago  
Voice: 312.413.0410 Email: kmonahan@uic.edu

---

---

## TABLE OF CONTENTS

---

---

MATRICULATION	
Diversity Pipeline	1
APPLICATIONS	
by Race/Ethnicity	2 – 5
ENROLLMENT	
by Race/Ethnicity	6 – 9
by Type, Time, & Gender	10 – 13
DEGREES	
by Race/Ethnicity	14 – 15
by Gender	16 – 17
List of academic programs included in this report	Appendix A

# Matriculation

## Diversity Pipeline

College of Engineering

Fall 2012 - Fall 2016

	Fall Semester Year	Applied					Admitted					Non-URM Admitted to Applied Yield %	URM Admitted to Applied Yield %	New Enrollment					Non-URM Enrolled to Admitted Yield %	URM Enrolled to Admitted Yield %	Total Enrollment				
		Grand Total	Non-URM Total		URM Total		Grand Total	Non-URM Total		URM Total				Grand Total	Non-URM Total		URM Total				Grand Total	Non-URM Total		URM Total	
			Count	%	Count	%		Count	%	Count	%				Count	%	Count	%				Count	%	Count	%
All	2012	2461	2396	97.4%	65	2.6%	1257	1229	97.8%	28	2.2%	51.3%	43.1%	362	344	95.0%	18	5.0%	28.0%	64.3%	1094	1030	94.1%	64	5.9%
	2013	3416	3335	97.6%	81	2.4%	1387	1346	97.0%	41	3.0%	40.4%	50.6%	326	304	93.3%	22	6.7%	22.6%	53.7%	1138	1074	94.4%	64	5.6%
	2014	4026	3953	98.2%	73	1.8%	1673	1638	97.9%	35	2.1%	41.4%	47.9%	405	385	95.1%	20	4.9%	23.5%	57.1%	1193	1129	94.6%	64	5.4%
	2015	4243	4168	98.2%	75	1.8%	1960	1915	97.7%	45	2.3%	45.9%	60.0%	634	616	97.2%	18	2.8%	32.2%	40.0%	1573	1498	95.2%	75	4.8%
	2016	4767	4683	98.2%	84	1.8%	1694	1637	96.6%	57	3.4%	35.0%	67.9%	380	353	92.9%	27	7.1%	21.6%	47.4%	1498	1420	94.8%	78	5.2%
	Average	3783	3707	98.0%	76	2.0%	1594	1553	97.4%	41	2.6%	41.9%	54.5%	421	400	95.0%	21	5.0%	25.8%	51.0%	1299	1230	94.7%	69	5.3%
Masters & IBHE Certificate	2012	1788	1742	97.4%	46	2.6%	959	938	97.8%	21	2.2%	53.8%	45.7%	275	261	94.9%	14	5.1%	27.8%	66.7%	633	596	94.2%	37	5.8%
	2013	2736	2674	97.7%	62	2.3%	1080	1046	96.9%	34	3.1%	39.1%	54.8%	250	231	92.4%	19	7.6%	22.1%	55.9%	684	643	94.0%	41	6.0%
	2014	3243	3188	98.3%	55	1.7%	1356	1328	97.9%	28	2.1%	41.7%	50.9%	323	305	94.4%	18	5.6%	23.0%	64.3%	722	676	93.6%	46	6.4%
	2015	3531	3477	98.5%	54	1.5%	1681	1647	98.0%	34	2.0%	47.4%	63.0%	527	514	97.5%	13	2.5%	31.2%	38.2%	1059	1008	95.2%	51	4.8%
	2016	4101	4035	98.4%	66	1.6%	1477	1430	96.8%	47	3.2%	35.4%	71.2%	313	290	92.7%	23	7.3%	20.3%	48.9%	1002	948	94.6%	54	5.4%
	Average	3080	3023	98.2%	57	1.8%	1311	1278	97.5%	33	2.5%	42.3%	58.0%	338	320	94.8%	17	5.2%	25.1%	53.0%	820	774	94.4%	46	5.6%
Doctorate	2012	635	623	98.1%	12	1.9%	281	277	98.6%	4	1.4%	44.5%	33.3%	76	74	97.4%	2	2.6%	26.7%	50.0%	445	422	94.8%	23	5.2%
	2013	645	633	98.1%	12	1.9%	279	277	99.3%	2	0.7%	43.8%	16.7%	63	62	98.4%	1	1.6%	22.4%	50.0%	433	415	95.8%	18	4.2%
	2014	747	733	98.1%	14	1.9%	291	286	98.3%	5	1.7%	39.0%	35.7%	64	62	96.9%	2	3.1%	21.7%	40.0%	442	428	96.8%	14	3.2%
	2015	678	666	98.2%	12	1.8%	255	252	98.8%	3	1.2%	37.8%	25.0%	91	91	100.0%	0	0.0%	36.1%	0.0%	489	473	96.7%	16	3.3%
	2016	638	626	98.1%	12	1.9%	198	193	97.5%	5	2.5%	30.8%	41.7%	53	51	96.2%	2	3.8%	26.4%	40.0%	477	457	95.8%	20	4.2%
	Average	669	656	98.1%	12	1.9%	261	257	98.5%	4	1.5%	39.2%	30.6%	69	68	98.0%	1	2.0%	26.5%	36.8%	457	439	96.0%	18	4.0%
Non-Degree & Campus Certificate	2012	38	31	81.6%	7	18.4%	17	14	82.4%	3	17.6%	45.2%	42.9%	11	9	81.8%	2	18.2%	64.3%	66.7%	16	12	75.0%	4	25.0%
	2013	35	28	80.0%	7	20.0%	28	23	82.1%	5	17.9%	82.1%	71.4%	13	11	84.6%	2	15.4%	47.8%	40.0%	21	16	76.2%	5	23.8%
	2014	36	32	88.9%	4	11.1%	26	24	92.3%	2	7.7%	75.0%	50.0%	18	18	100.0%	0	0.0%	75.0%	0.0%	29	25	86.2%	4	13.8%
	2015	34	25	73.5%	9	26.5%	24	16	66.7%	8	33.3%	64.0%	88.9%	16	11	68.8%	5	31.3%	68.8%	62.5%	25	17	68.0%	8	32.0%
	2016	28	22	78.6%	6	21.4%	19	14	73.7%	5	26.3%	63.6%	83.3%	14	12	85.7%	2	14.3%	85.7%	40.0%	19	15	78.9%	4	21.1%
	Average	34	28	80.7%	7	19.3%	23	18	79.8%	5	20.2%	65.9%	69.7%	14	12	84.7%	2	15.3%	67.0%	47.8%	22	17	77.3%	5	22.7%

**Note:** URM stands for Under-Represented Minority and includes American Indian or Alaska Native; Black or African-American; Hispanic / Latino race/ethnicity groups

# Applications - Total

## by Race/Ethnicity

College of Engineering

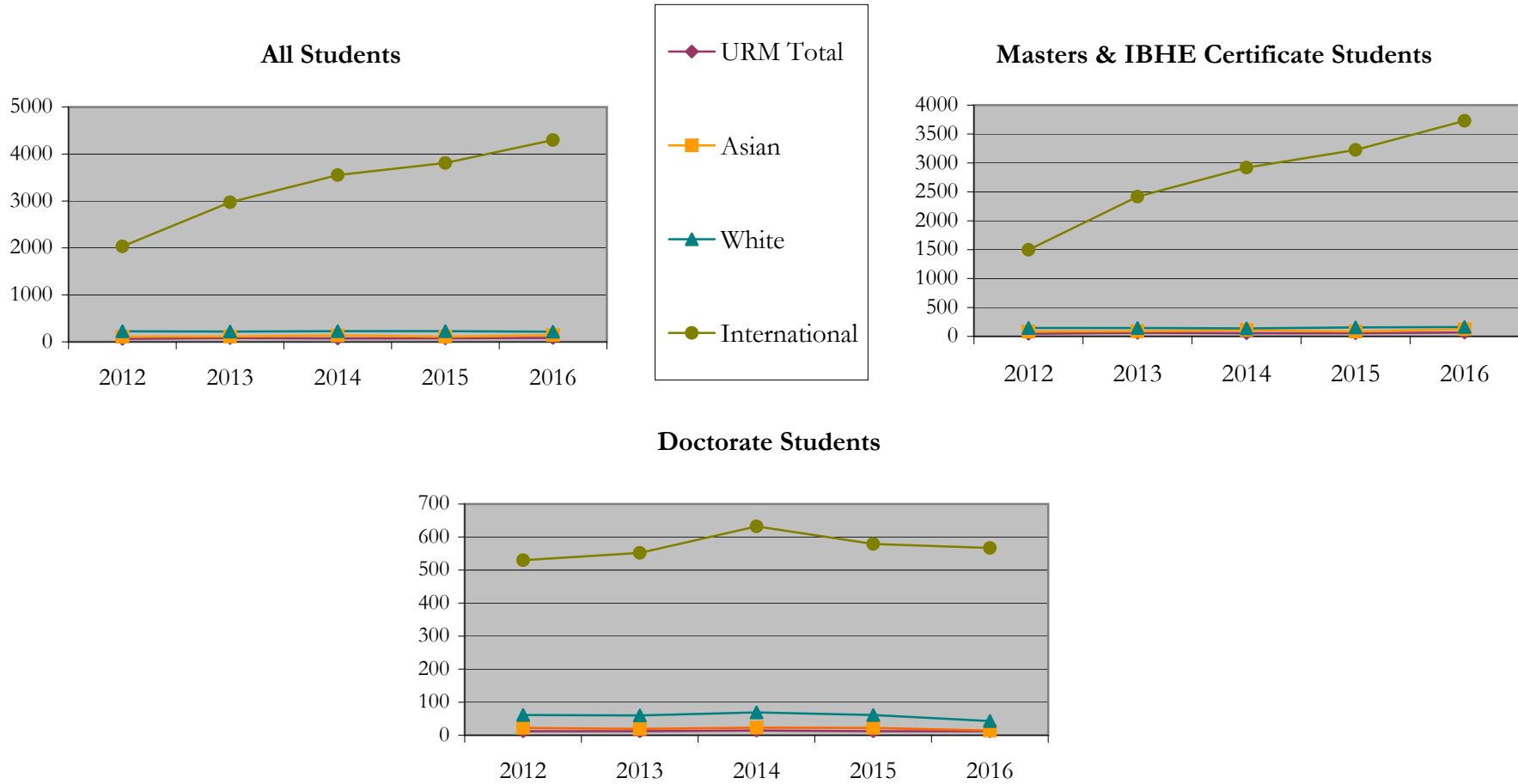
Fall 2012 - Fall 2016

		Total	Under Represented Minorities (URM)																Not Reported		
			American Indian or Alaska Native		Black or African American		Hispanic / Latino		URM Total		Asian		Native Hawaiian or Pacific Islander		White		Two or More Races			International	
			Count	%	Count	%	Count	%	Count	%	Count	%	Count	%	Count	%	Count	%		Count	%
All	2012	2462	0	0.0	21	0.9	44	1.8	65	2.6	108	4.4	0	0.0	224	9.1	12	0.5	2032	82.5	21
	2013	3416	1	0.0	34	1.0	46	1.3	81	2.4	113	3.3	0	0.0	218	6.4	13	0.4	2973	87.0	18
	2014	4026	2	0.0	31	0.8	40	1.0	73	1.8	137	3.4	0	0.0	228	5.7	13	0.3	3553	88.3	22
	2015	4243	2	0.0	27	0.6	46	1.1	75	1.8	109	2.6	0	0.0	228	5.4	9	0.2	3810	89.8	12
	2016	4767	0	0.0	44	0.9	40	0.8	84	1.8	144	3.0	0	0.0	216	4.5	11	0.2	4298	90.2	14
Masters & IBHE Certificate	2012	1789	0	0.0	16	0.9	30	1.7	46	2.6	82	4.6	0	0.0	145	8.1	8	0.4	1498	83.7	10
	2013	2736	1	0.0	25	0.9	36	1.3	62	2.3	89	3.3	0	0.0	145	5.3	8	0.3	2416	88.3	16
	2014	3243	1	0.0	23	0.7	31	1.0	55	1.7	109	3.4	0	0.0	139	4.3	7	0.2	2919	90.0	14
	2015	3531	2	0.1	18	0.5	34	1.0	54	1.5	83	2.4	0	0.0	155	4.4	5	0.1	3226	91.4	8
	2016	4101	0	0.0	35	0.9	31	0.8	66	1.6	124	3.0	0	0.0	161	3.9	9	0.2	3728	90.9	13
Doctorate	2012	635	0	0.0	2	0.3	10	1.6	12	1.9	22	3.5	0	0.0	61	9.6	3	0.5	530	83.5	7
	2013	645	0	0.0	4	0.6	8	1.2	12	1.9	19	2.9	0	0.0	60	9.3	2	0.3	552	85.6	0
	2014	746	1	0.1	5	0.7	8	1.1	14	1.9	23	3.1	0	0.0	69	9.2	3	0.4	632	84.7	5
	2015	678	0	0.0	5	0.7	7	1.0	12	1.8	22	3.2	0	0.0	61	9.0	2	0.3	579	85.4	2
	2016	638	0	0.0	4	0.6	8	1.3	12	1.9	14	2.2	0	0.0	43	6.7	1	0.2	567	88.9	1
Non-Degree & Campus Certificate	2012	38	0	0.0	3	7.9	4	10.5	7	18.4	4	10.5	0	0.0	18	47.4	1	2.6	4	10.5	4
	2013	35	0	0.0	5	14.3	2	5.7	7	20.0	5	14.3	0	0.0	13	37.1	3	8.6	5	14.3	2
	2014	37	0	0.0	3	8.1	1	2.7	4	10.8	5	13.5	0	0.0	20	54.1	3	8.1	2	5.4	3
	2015	34	0	0.0	4	11.8	5	14.7	9	26.5	4	11.8	0	0.0	12	35.3	2	5.9	5	14.7	2
	2016	28	0	0.0	5	17.9	1	3.6	6	21.4	6	21.4	0	0.0	12	42.9	1	3.6	3	10.7	0

**Note:** URM stands for Under-Represented Minority and includes American Indian or Alaska Native; Black or African-American; Hispanic / Latino race/ethnicity groups

# Applications - Total by Race/Ethnicity

College of Engineering  
Fall 2012 - Fall 2016



**Notes:** 1) URM stands for Under-Represented Minority and includes American Indian or Alaska Native; Black or African-American; Hispanic / Latino race/ethnicity groups  
 2) Individual URM groups, Native Hawaiian Pacific Islander, Two or More Races, and Other race/ethnicity categories left off this charts due to relatively low numbers

# Applications - Admitted

## by Race/Ethnicity

College of Engineering

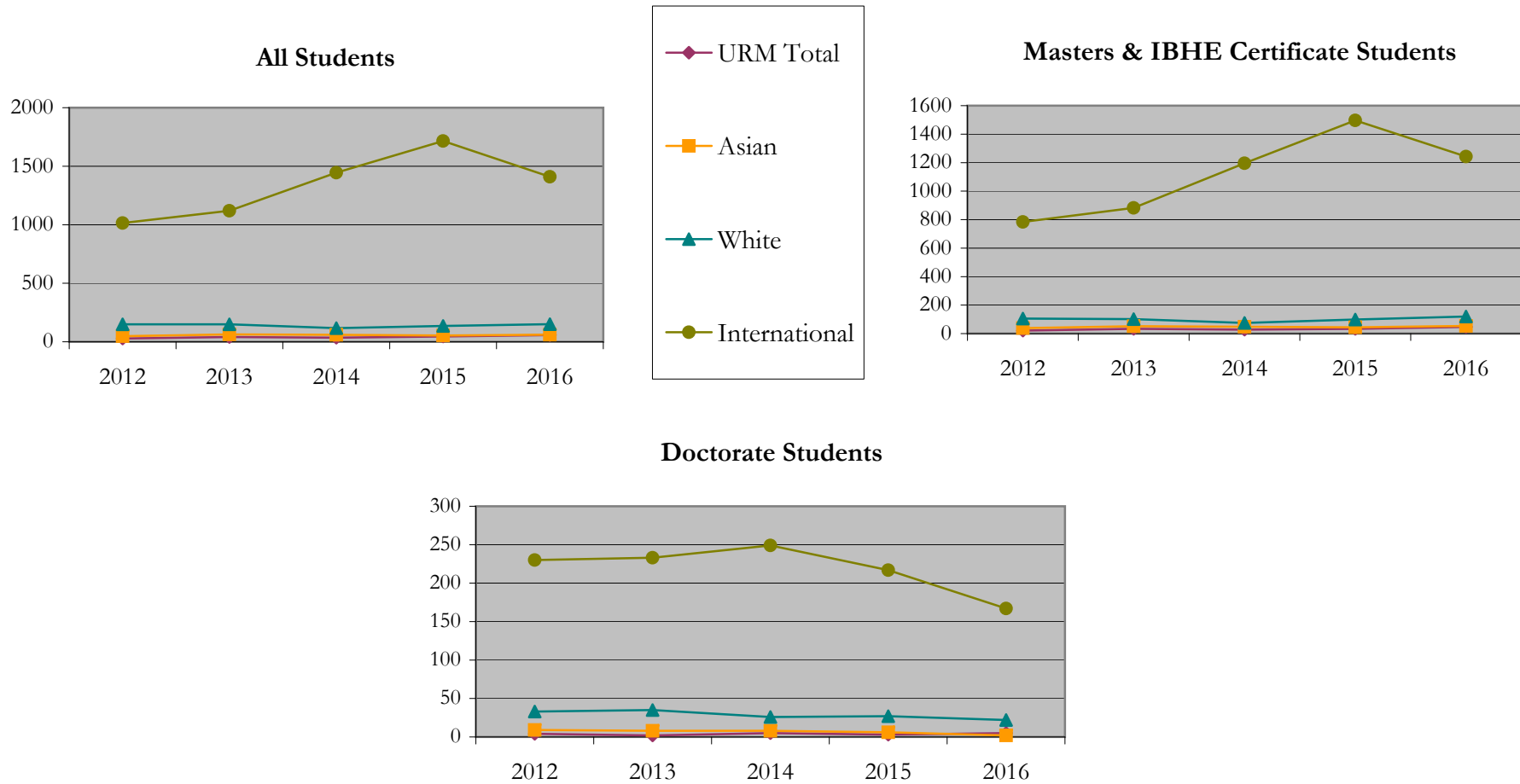
Fall 2012 - Fall 2016

		Total	Under Represented Minorities (URM)								Asian		Native Hawaiian or Pacific Islander		White		Two or More Races		International		Not Reported
			American Indian or Alaska Native		Black or African American		Hispanic / Latino		URM Total												
			Count	%	Count	%	Count	%	Count	%											
All	2012	1257	0	0.0	6	0.5	22	1.8	28	2.2	48	3.8	0	0.0	149	11.9	7	0.6	1014	80.7	11
	2013	1387	1	0.1	14	1.0	26	1.9	41	3.0	63	4.5	0	0.0	149	10.7	10	0.7	1119	80.7	5
	2014	1673	2	0.1	10	0.6	23	1.4	35	2.1	60	3.6	0	0.0	117	7.0	6	0.4	1445	86.4	10
	2015	1960	2	0.1	11	0.6	32	1.6	45	2.3	54	2.8	0	0.0	135	6.9	1	0.1	1716	87.6	9
	2016	1694	0	0.0	32	1.9	25	1.5	57	3.4	61	3.6	0	0.0	151	8.9	9	0.5	1410	83.2	6
Masters & IBHE Certificate	2012	959	0	0.0	5	0.5	16	1.7	21	2.2	38	4.0	0	0.0	105	10.9	5	0.5	784	81.8	6
	2013	1080	1	0.1	11	1.0	22	2.0	34	3.1	52	4.8	0	0.0	102	9.4	7	0.6	882	81.7	3
	2014	1356	1	0.1	9	0.7	18	1.3	28	2.1	48	3.5	0	0.0	75	5.5	4	0.3	1196	88.2	5
	2015	1681	2	0.1	8	0.5	24	1.4	34	2.0	44	2.6	0	0.0	99	5.9	1	0.1	1497	89.1	6
	2016	1477	0	0.0	25	1.7	22	1.5	47	3.2	54	3.7	0	0.0	120	8.1	8	0.5	1243	84.2	5
Doctorate	2012	281	0	0.0	0	0.0	4	1.4	4	1.4	9	3.2	0	0.0	33	11.7	2	0.7	230	81.9	3
	2013	279	0	0.0	0	0.0	2	0.7	2	0.7	8	2.9	0	0.0	35	12.5	1	0.4	233	83.5	0
	2014	291	1	0.3	0	0.0	4	1.4	5	1.7	8	2.7	0	0.0	26	8.9	1	0.3	249	85.6	2
	2015	255	0	0.0	0	0.0	3	1.2	3	1.2	6	2.4	0	0.0	27	10.6	0	0.0	217	85.1	2
	2016	198	0	0.0	3	1.5	2	1.0	5	2.5	2	1.0	0	0.0	22	11.1	1	0.5	167	84.3	1
Non-Degree & Campus Certificate	2012	17	0	0.0	1	5.9	2	11.8	3	17.6	1	5.9	0	0.0	11	64.7	0	0.0	0	0.0	2
	2013	28	0	0.0	3	10.7	2	7.1	5	17.9	3	10.7	0	0.0	12	42.9	2	7.1	4	14.3	2
	2014	26	0	0.0	1	3.8	1	3.8	2	7.7	4	15.4	0	0.0	16	61.5	1	3.8	0	0.0	3
	2015	24	0	0.0	3	12.5	5	20.8	8	33.3	4	16.7	0	0.0	9	37.5	0	0.0	2	8.3	1
	2016	19	0	0.0	4	21.1	1	5.3	5	26.3	5	26.3	0	0.0	9	47.4	0	0.0	0	0.0	0

**Note:** URM stands for Under-Represented Minority and includes American Indian or Alaska Native; Black or African-American; Hispanic / Latino race/ethnicity groups

# Applications - Admitted by Race/Ethnicity

College of Engineering  
Fall 2012 - Fall 2016



**Notes:** 1) URM stands for Under-Represented Minority and includes American Indian or Alaska Native; Black or African-American; Hispanic / Latino race/ethnicity groups  
2) Individual URM groups, Native Hawaiian Pacific Islander, Two or More Races, and Other race/ethnicity categories left off this charts due to relatively low numbers

**Enrollment - New  
by Race/Ethnicity**

College of Engineering  
Fall 2012 - Fall 2016

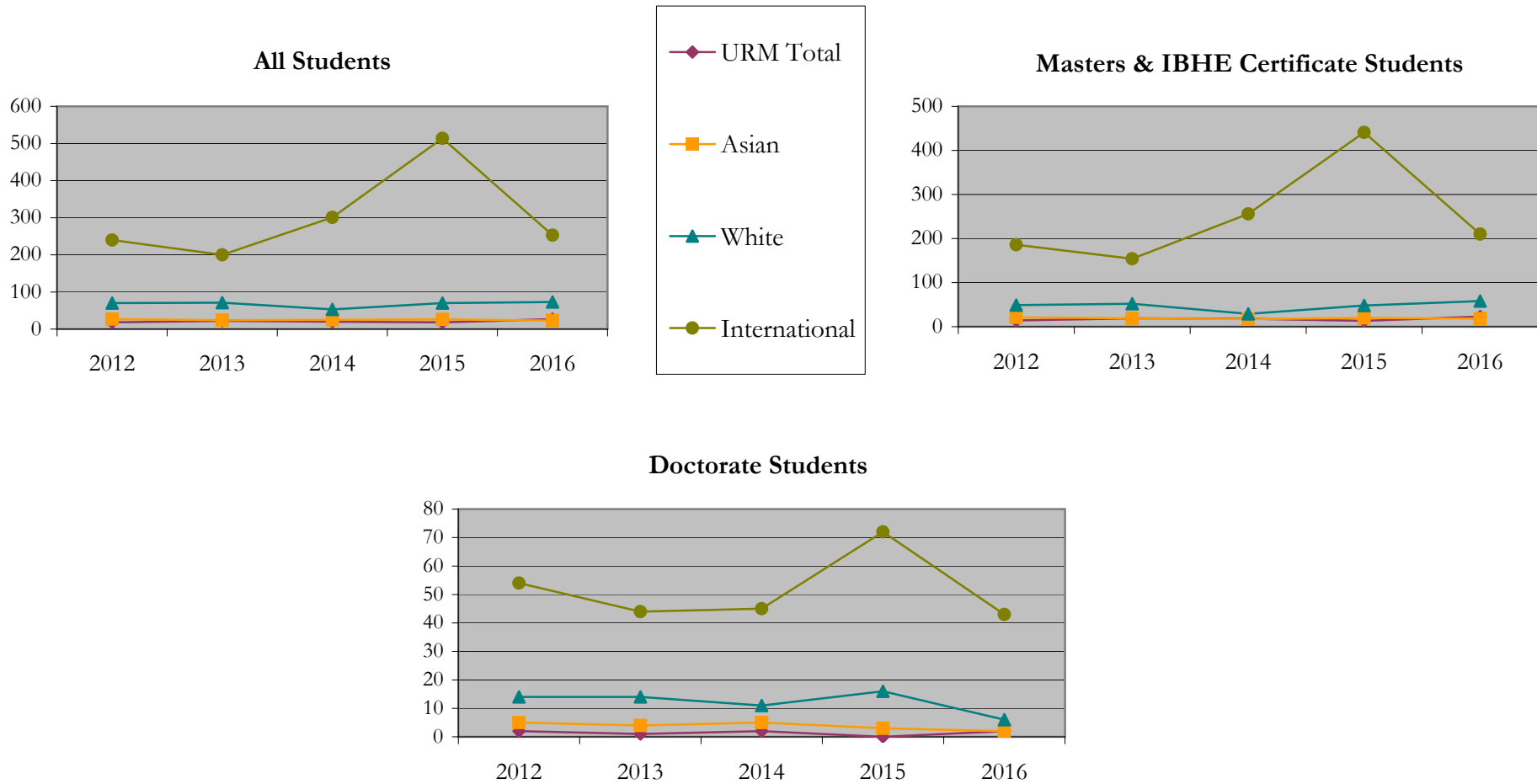
		Total	Under Represented Minorities (URM)								Asian		Native Hawaiian or Pacific Islander		White		Two or More Races		International		Not Reported
			American Indian or Alaska Native		Black or African American		Hispanic / Latino		URM Total												
			Count	%	Count	%	Count	%	Count	%											
All	2012	362	0	0.0	4	1.1	14	3.9	18	5.0	27	7.5	0	0.0	70	19.3	1	0.3	240	66.3	6
	2013	326	1	0.3	6	1.8	15	4.6	22	6.7	24	7.4	0	0.0	71	21.8	5	1.5	200	61.3	4
	2014	405	0	0.0	5	1.2	15	3.7	20	4.9	25	6.2	0	0.0	53	13.1	1	0.2	301	74.3	5
	2015	634	0	0.0	4	0.6	14	2.2	18	2.8	26	4.1	0	0.0	70	11.0	0	0.0	514	81.1	6
	2016	380	0	0.0	13	3.4	14	3.7	27	7.1	23	6.1	0	0.0	73	19.2	4	1.1	253	66.6	0
Masters & IBHE Certificate	2012	275	0	0.0	4	1.5	10	3.6	14	5.1	21	7.6	0	0.0	49	17.8	1	0.4	186	67.6	4
	2013	250	1	0.4	5	2.0	13	5.2	19	7.6	19	7.6	0	0.0	52	20.8	4	1.6	154	61.6	2
	2014	323	0	0.0	5	1.5	13	4.0	18	5.6	17	5.3	0	0.0	29	9.0	1	0.3	256	79.3	2
	2015	527	0	0.0	2	0.4	11	2.1	13	2.5	20	3.8	0	0.0	48	9.1	0	0.0	441	83.7	5
	2016	313	0	0.0	11	3.5	12	3.8	23	7.3	18	5.8	0	0.0	58	18.5	4	1.3	210	67.1	0
Doctorate	2012	76	0	0.0	0	0.0	2	2.6	2	2.6	5	6.6	0	0.0	14	18.4	0	0.0	54	71.1	1
	2013	63	0	0.0	0	0.0	1	1.6	1	1.6	4	6.3	0	0.0	14	22.2	0	0.0	44	69.8	0
	2014	64	0	0.0	0	0.0	2	3.1	2	3.1	5	7.8	0	0.0	11	17.2	0	0.0	45	70.3	1
	2015	91	0	0.0	0	0.0	0	0.0	0	0.0	3	3.3	0	0.0	16	17.6	0	0.0	72	79.1	0
	2016	53	0	0.0	1	1.9	1	1.9	2	3.8	2	3.8	0	0.0	6	11.3	0	0.0	43	81.1	0
Non-Degree & Campus Certificate	2012	11	0	0.0	0	0.0	2	18.2	2	18.2	1	9.1	0	0.0	7	63.6	0	0.0	0	0.0	1
	2013	13	0	0.0	1	7.7	1	7.7	2	15.4	1	7.7	0	0.0	5	38.5	1	7.7	2	15.4	2
	2014	18	0	0.0	0	0.0	0	0.0	0	0.0	3	16.7	0	0.0	13	72.2	0	0.0	0	0.0	2
	2015	16	0	0.0	2	12.5	3	18.8	5	31.3	3	18.8	0	0.0	6	37.5	0	0.0	1	6.3	1
	2016	14	0	0.0	1	7.1	1	7.1	2	14.3	3	21.4	0	0.0	9	64.3	0	0.0	0	0.0	0

**Note:** URM stands for Under-Represented Minority and includes American Indian or Alaska Native; Black or African-American; Hispanic / Latino race/ethnicity groups



# Enrollment - New by Race/Ethnicity

College of Engineering  
Fall 2012 - Fall 2016



**Notes:** 1) URM stands for Under-Represented Minority and includes American Indian or Alaska Native; Black or African-American; Hispanic / Latino race/ethnicity groups

2) Individual URM groups, Native Hawaiian Pacific Islander, Two or More Races, and Other race/ethnicity categories left off this charts due to relatively low numbers

**Enrollment - Total  
by Race/Ethnicity**

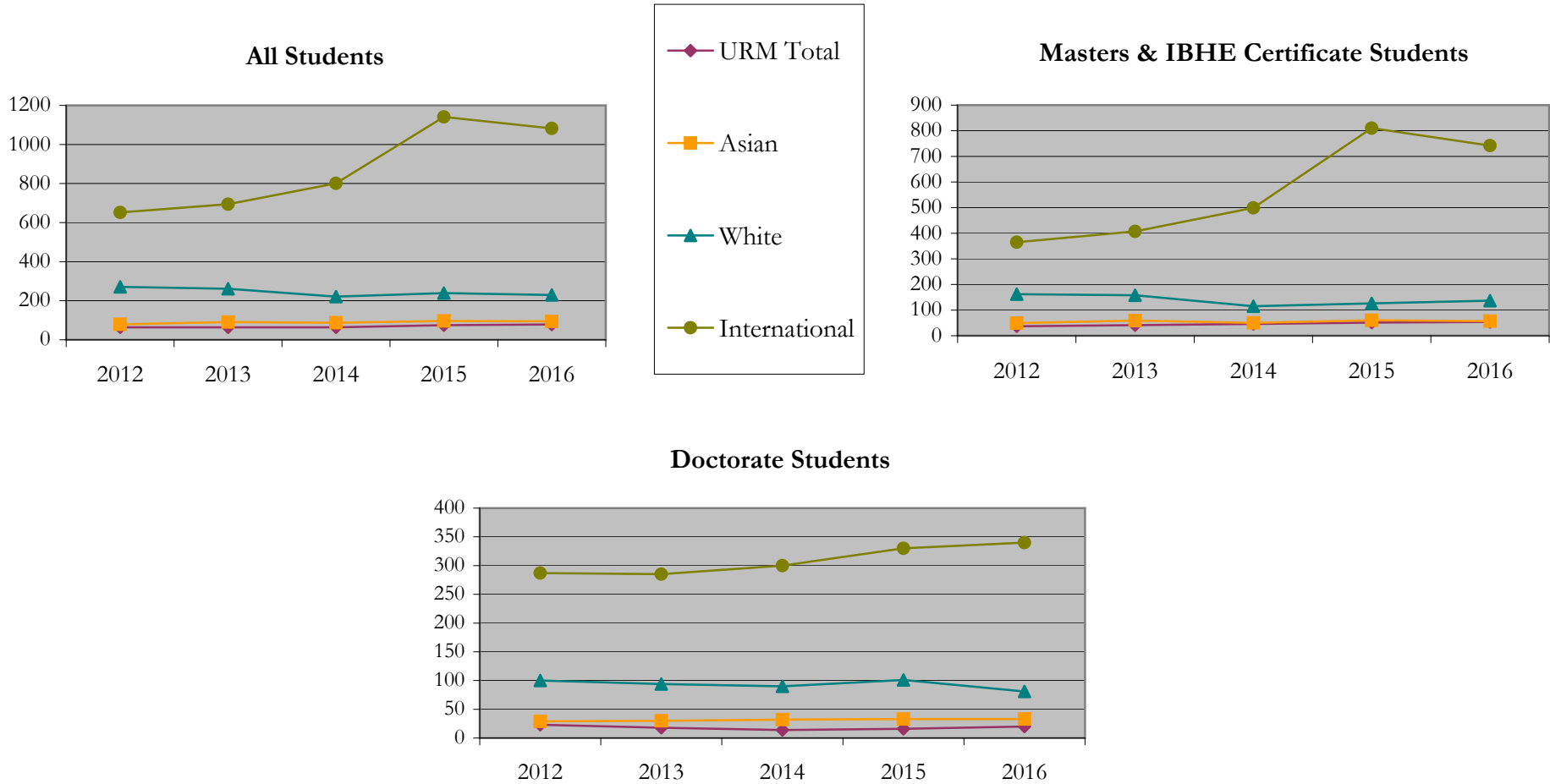
College of Engineering  
Fall 2012 - Fall 2016

		Total	Under Represented Minorities (URM)								Asian		Native Hawaiian or Pacific Islander		White		Two or More Races		International		Not Reported
			American Indian or Alaska Native		Black or African American		Hispanic / Latino		URM Total												
			Count	%	Count	%	Count	%	Count	%											
All	2012	1094	0	0.0	23	2.1	41	3.7	64	5.9	79	7.2	0	0.0	271	24.8	4	0.4	652	59.6	24
	2013	1138	2	0.2	21	1.8	41	3.6	64	5.6	91	8.0	0	0.0	261	22.9	8	0.7	694	61.0	20
	2014	1193	2	0.2	20	1.7	42	3.5	64	5.4	87	7.3	0	0.0	221	18.5	5	0.4	801	67.1	15
	2015	1573	1	0.1	24	1.5	50	3.2	75	4.8	96	6.1	0	0.0	239	15.2	5	0.3	1141	72.5	17
	2016	1498	1	0.1	29	1.9	48	3.2	78	5.2	94	6.3	0	0.0	229	15.3	7	0.5	1082	72.2	8
Masters & IBHE Certificate	2012	633	0	0.0	15	2.4	22	3.5	37	5.8	49	7.7	0	0.0	162	25.6	3	0.5	365	57.7	17
	2013	684	2	0.3	13	1.9	26	3.8	41	6.0	59	8.6	0	0.0	158	23.1	6	0.9	407	59.5	13
	2014	722	2	0.3	14	1.9	30	4.2	46	6.4	50	6.9	0	0.0	115	15.9	4	0.6	499	69.1	8
	2015	1059	1	0.1	14	1.3	36	3.4	51	4.8	60	5.7	0	0.0	126	11.9	2	0.2	810	76.5	10
	2016	1002	1	0.1	19	1.9	34	3.4	54	5.4	57	5.7	0	0.0	137	13.7	7	0.7	742	74.1	5
Doctorate	2012	445	0	0.0	7	1.6	16	3.6	23	5.2	29	6.5	0	0.0	100	22.5	1	0.2	287	64.5	5
	2013	433	0	0.0	6	1.4	12	2.8	18	4.2	30	6.9	0	0.0	94	21.7	1	0.2	285	65.8	5
	2014	442	0	0.0	4	0.9	10	2.3	14	3.2	32	7.2	0	0.0	90	20.4	1	0.2	300	67.9	5
	2015	489	0	0.0	6	1.2	10	2.0	16	3.3	33	6.7	0	0.0	101	20.7	3	0.6	330	67.5	6
	2016	477	0	0.0	9	1.9	11	2.3	20	4.2	33	6.9	0	0.0	81	17.0	0	0.0	340	71.3	3
Non-Degree & Campus Certificate	2012	16	0	0.0	1	6.3	3	18.8	4	25.0	1	6.3	0	0.0	9	56.3	0	0.0	0	0.0	2
	2013	21	0	0.0	2	9.5	3	14.3	5	23.8	2	9.5	0	0.0	9	42.9	1	4.8	2	9.5	2
	2014	29	0	0.0	2	6.9	2	6.9	4	13.8	5	17.2	0	0.0	16	55.2	0	0.0	2	6.9	2
	2015	25	0	0.0	4	16.0	4	16.0	8	32.0	3	12.0	0	0.0	12	48.0	0	0.0	1	4.0	1
	2016	19	0	0.0	1	5.3	3	15.8	4	21.1	4	21.1	0	0.0	11	57.9	0	0.0	0	0.0	0

**Note:** URM stands for Under-Represented Minority and includes American Indian or Alaska Native; Black or African-American; Hispanic / Latino race/ethnicity groups

# Enrollment - Total by Race/Ethnicity

College of Engineering  
Fall 2012 - Fall 2016



**Notes:** 1) URM stands for Under-Represented Minority and includes American Indian or Alaska Native; Black or African-American; Hispanic / Latino race/ethnicity groups  
 2) Individual URM groups, Native Hawaiian Pacific Islander, Two or More Races, and Other race/ethnicity categories left off this charts due to relatively low numbers

# Enrollment

## by Student Type, Enrollment Time, and Gender

College of Engineering

Fall 2012 - Fall 2016

		Total	New		Continuing		Male		Female		Gender Not Reported	Part-time		Full-time	
			Count	%	Count	%	Count	%	Count	%		Count	%	Count	%
All	2012	1094	362	33.1	732	66.9	829	75.8	264	24.1	1	281	25.7	813	74.3
	2013	1138	326	28.6	812	71.4	849	74.6	288	25.3	1	264	23.2	874	76.8
	2014	1193	405	33.9	788	66.1	877	73.5	313	26.2	3	245	20.5	948	79.5
	2015	1573	634	40.3	939	59.7	1171	74.4	400	25.4	2	287	18.2	1286	81.8
	2016	1498	380	25.4	1118	74.6	1127	75.2	370	24.7	1	266	17.8	1232	82.2
Masters & IBHE Certificate	2012	633	275	43.4	358	56.6	502	79.3	130	20.5	1	203	32.1	430	67.9
	2013	684	250	36.5	434	63.5	534	78.1	150	21.9	0	195	28.5	489	71.5
	2014	722	323	44.7	399	55.3	544	75.3	177	24.5	1	168	23.3	554	76.7
	2015	1059	527	49.8	532	50.2	797	75.3	261	24.6	1	207	19.5	852	80.5
	2016	1002	313	31.2	689	68.8	770	76.8	231	23.1	1	189	18.9	813	81.1
Doctorate	2012	445	76	17.1	369	82.9	313	70.3	132	29.7	0	62	13.9	383	86.1
	2013	433	63	14.5	370	85.5	301	69.5	132	30.5	0	49	11.3	384	88.7
	2014	442	64	14.5	378	85.5	312	70.6	129	29.2	1	50	11.3	392	88.7
	2015	489	91	18.6	398	81.4	357	73.0	131	26.8	1	63	12.9	426	87.1
	2016	477	53	11.1	424	88.9	340	71.3	137	28.7	0	64	13.4	413	86.6
Non-Degree & Campus Certificate	2012	16	11	68.8	5	31.3	14	87.5	2	12.5	0	16	100.0	0	0.0
	2013	21	13	61.9	8	38.1	14	66.7	6	28.6	1	20	95.2	1	4.8
	2014	29	18	62.1	11	37.9	21	72.4	7	24.1	1	27	93.1	2	6.9
	2015	25	16	64.0	9	36.0	17	68.0	8	32.0	0	17	68.0	8	32.0
	2016	19	14	73.7	5	26.3	17	89.5	2	10.5	0	13	68.4	6	31.6

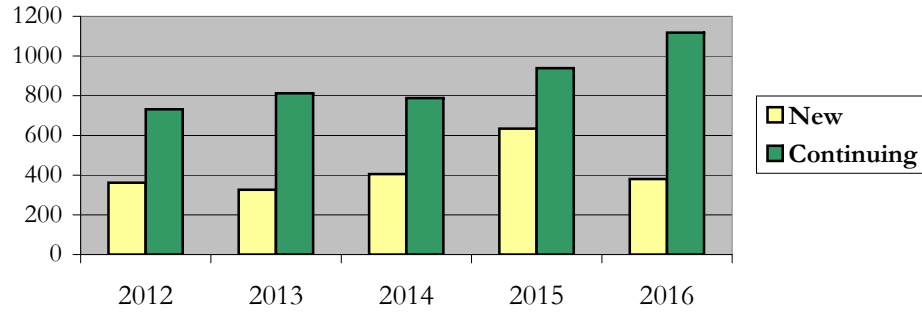
# Enrollment

## by Student Type, Enrollment Time, and Gender (All Students)

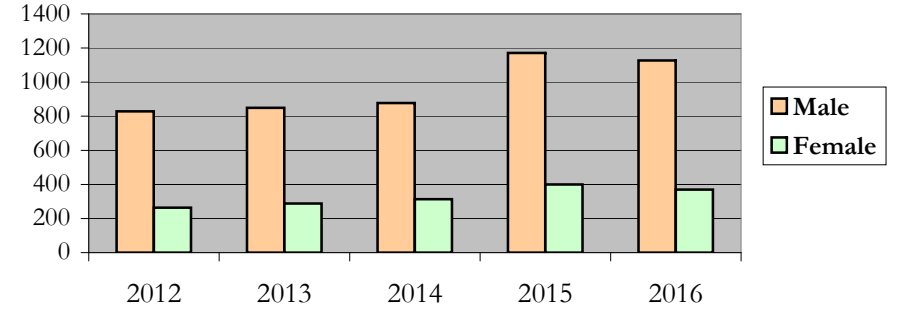
College of Engineering

Fall 2012 - Fall 2016

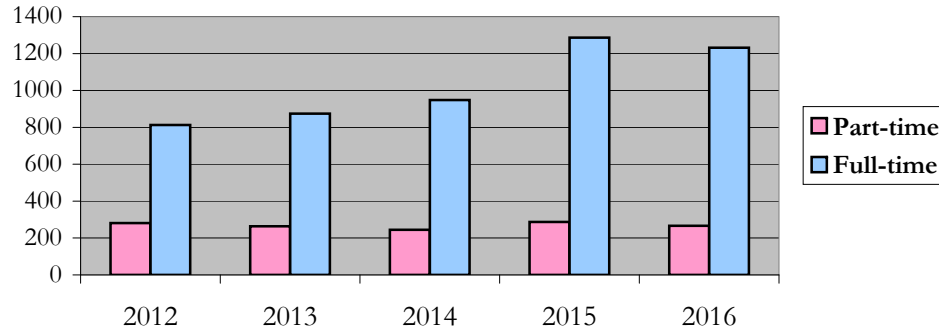
### New and Continuing Enrollment



### Enrollment by Gender



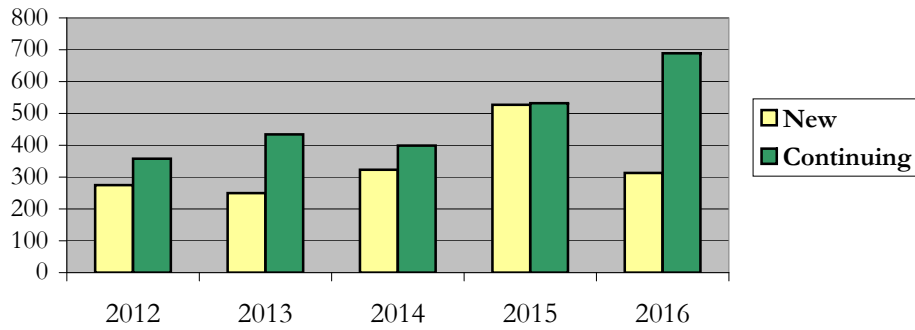
### Enrollment by Student Enrollment Time



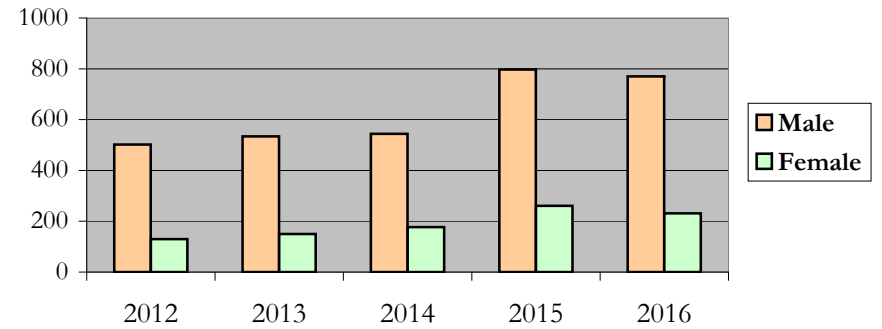
**Enrollment**  
**by Student Type, Enrollment Time, and Gender (Master's Students)**

College of Engineering  
 Fall 2012 - Fall 2016

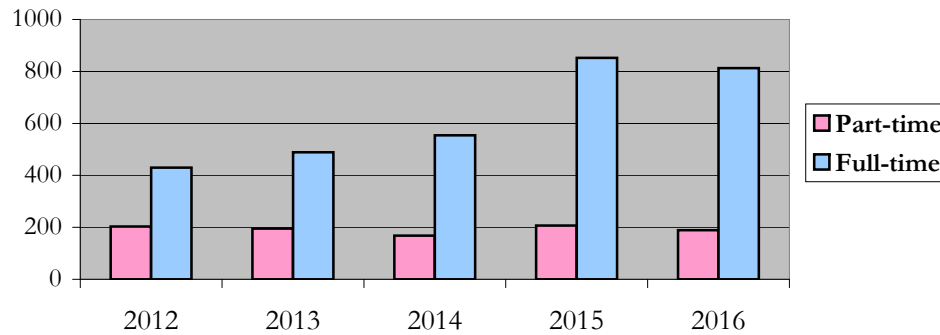
**New and Continuing Enrollment**



**Enrollment by Gender**



**Enrollment by Student Enrollment Time**



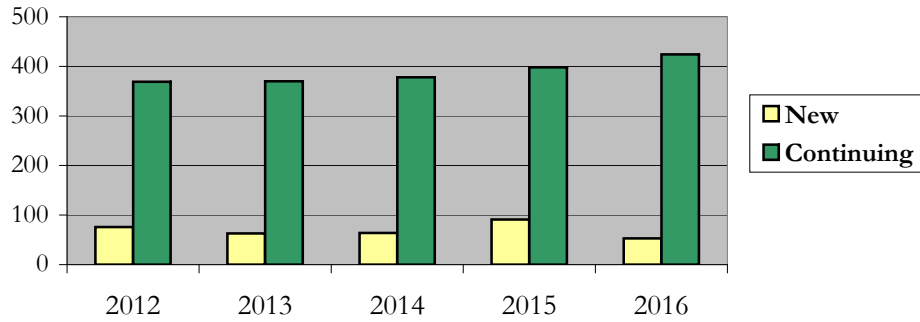
# Enrollment

## by Student Type, Enrollment Time, and Gender (Doctorate Students)

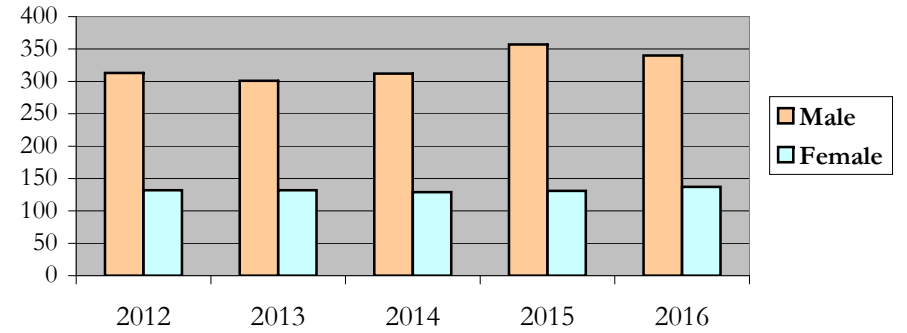
College of Engineering

Fall 2012 - Fall 2016

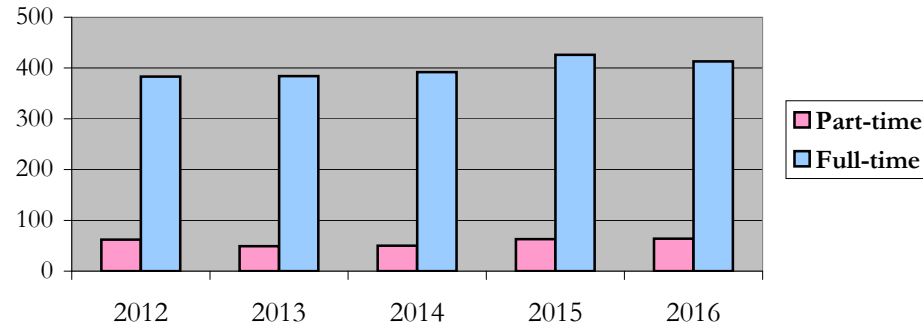
### New and Continuing Enrollment



### Enrollment by Gender



### Enrollment by Student Enrollment Time



# Degrees Conferred by Race/Ethnicity

College of Engineering  
Fall 2012 - Fall 2016

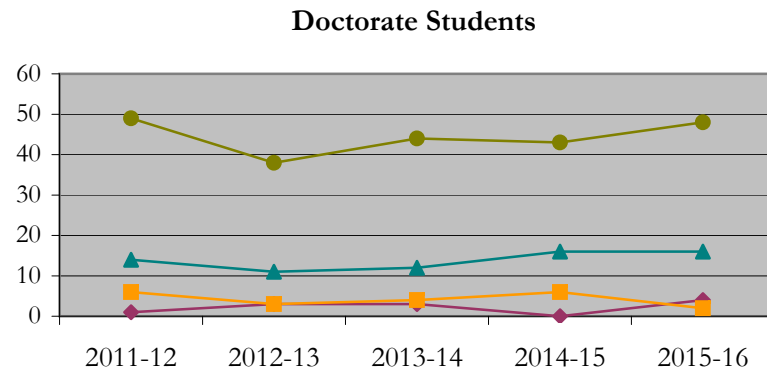
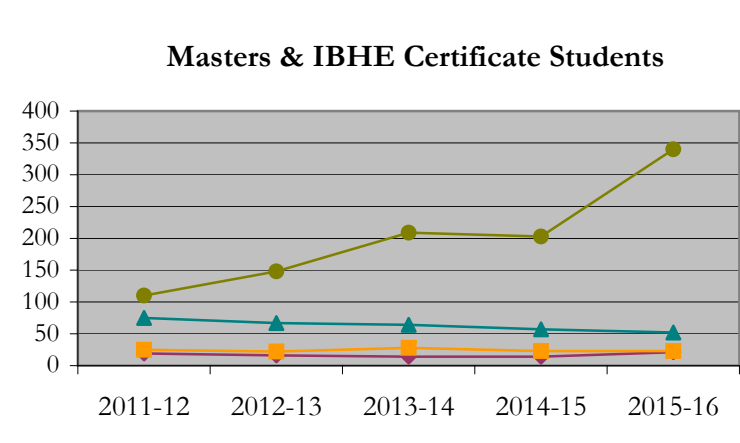
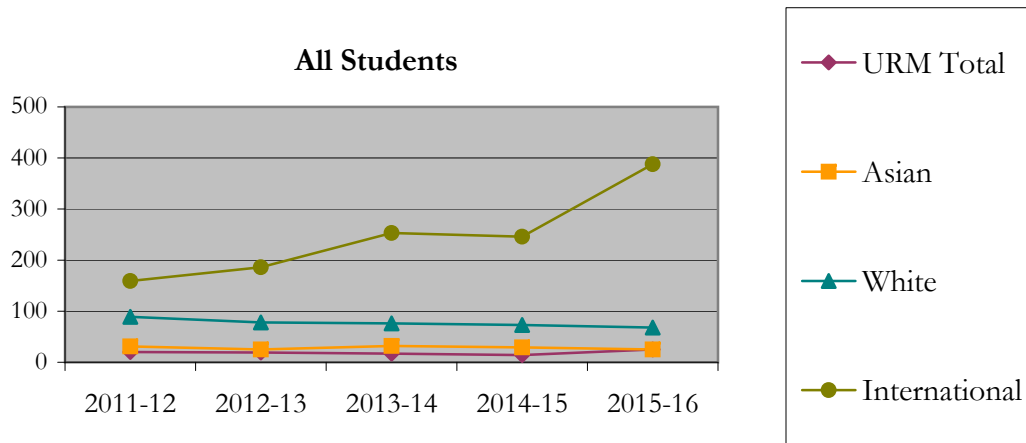
		Total	Under Represented Minorities (URM)								Asian	Native Hawaiian or Pacific Islander		White		Two or More Races		International		Not Reported	
			American Indian or Alaska Native		Black or African American		Hispanic / Latino		URM Total			Count	%	Count	%	Count	%	Count	%	Count	%
			Count	%	Count	%	Count	%	Count	%											
All	2011 - 12	307	0	0.0	10	3.3	10	3.3	20	6.5	31	10.1	1	0.3	89	29.0	1	0.3	159	51.8	6
	2012 - 13	317	0	0.0	8	2.5	11	3.5	19	6.0	25	7.9	0	0.0	78	24.6	2	0.6	186	58.7	7
	2013 - 14	386	0	0.0	6	1.6	11	2.8	17	4.4	32	8.3	0	0.0	76	19.7	3	0.8	253	65.5	5
	2014 - 15	368	0	0.0	5	1.4	9	2.4	14	3.8	29	7.9	0	0.0	73	19.8	2	0.5	246	66.8	4
	2015 - 16	511	0	0.0	7	1.4	18	3.5	25	4.9	25	4.9	0	0.0	68	13.3	1	0.2	388	75.9	4
Masters & IBHE Certificate	2011 - 12	237	0	0.0	9	3.8	10	4.2	19	8.0	25	10.5	1	0.4	75	31.6	1	0.4	110	46.4	6
	2012 - 13	261	0	0.0	7	2.7	9	3.4	16	6.1	22	8.4	0	0.0	67	25.7	2	0.8	148	56.7	6
	2013 - 14	323	0	0.0	4	1.2	10	3.1	14	4.3	28	8.7	0	0.0	64	19.8	3	0.9	209	64.7	5
	2014 - 15	303	0	0.0	5	1.7	9	3.0	14	4.6	23	7.6	0	0.0	57	18.8	2	0.7	203	67.0	4
	2015 - 16	440	0	0.0	5	1.1	16	3.6	21	4.8	23	5.2	0	0.0	52	11.8	1	0.2	340	77.3	3
Doctorate	2011 - 12	70	0	0.0	1	1.4	0	0.0	1	1.4	6	8.6	0	0.0	14	20.0	0	0.0	49	70.0	0
	2012 - 13	56	0	0.0	1	1.8	2	3.6	3	5.4	3	5.4	0	0.0	11	19.6	0	0.0	38	67.9	1
	2013 - 14	63	0	0.0	2	3.2	1	1.6	3	4.8	4	6.3	0	0.0	12	19.0	0	0.0	44	69.8	0
	2014 - 15	65	0	0.0	0	0.0	0	0.0	0	0.0	6	9.2	0	0.0	16	24.6	0	0.0	43	66.2	0
	2015 - 16	71	0	0.0	2	2.8	2	2.8	4	5.6	2	2.8	0	0.0	16	22.5	0	0.0	48	67.6	1
Non-Degree & Campus Certificate	2011 - 12	0	0	0.0	0	0.0	0	0.0	0	0.0	0	0.0	0	0.0	0	0.0	0	0.0	0	0.0	0
	2012 - 13	0	0	0.0	0	0.0	0	0.0	0	0.0	0	0.0	0	0.0	0	0.0	0	0.0	0	0.0	0
	2013 - 14	0	0	0.0	0	0.0	0	0.0	0	0.0	0	0.0	0	0.0	0	0.0	0	0.0	0	0.0	0
	2014 - 15	0	0	0.0	0	0.0	0	0.0	0	0.0	0	0.0	0	0.0	0	0.0	0	0.0	0	0.0	0
	2015 - 16	0	0	0.0	0	0.0	0	0.0	0	0.0	0	0.0	0	0.0	0	0.0	0	0.0	0	0.0	0

**Note:** Each row represents a fiscal year, beginning with Summer term and ending with Spring.



# Degrees Conferred by Race/Ethnicity

College of Engineering  
Fall 2012 - Fall 2016



**Notes:** 1) URM stands for Under-Represented Minority and includes American Indian or Alaska Native; Black or African-American; Hispanic / Latino race/ethnicity groups

2) Individual URM groups, Native Hawaiian Pacific Islander, Two or More Races, and Other race/ethnicity categories left off this charts due to relatively low numbers

**Degrees Conferred**  
**by Gender**

College of Engineering  
 Fall 2012 - Fall 2016

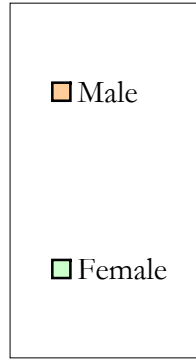
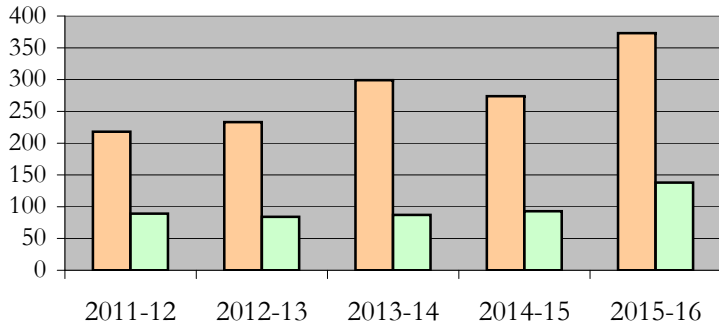
		Total	Male		Female		Not Reported
			Count	%	Count	%	
All	2011 - 12	307	218	71.0	89	29.0	0
	2012 - 13	317	233	73.5	84	26.5	0
	2013 - 14	386	299	77.5	87	22.5	0
	2014 - 15	368	274	74.5	93	25.3	1
	2015 - 16	511	373	73.0	138	27.0	0
Masters & IBHE Certificate	2011 - 12	237	165	69.6	72	30.4	0
	2012 - 13	261	198	75.9	63	24.1	0
	2013 - 14	323	260	80.5	63	19.5	0
	2014 - 15	303	227	74.9	75	24.8	1
	2015 - 16	440	324	73.6	116	26.4	0
Doctorate	2011 - 12	70	53	75.7	17	24.3	0
	2012 - 13	56	35	62.5	21	37.5	0
	2013 - 14	63	39	61.9	24	38.1	0
	2014 - 15	65	47	72.3	18	27.7	0
	2015 - 16	71	49	69.0	22	31.0	0
Campus Certificates	2011 - 12	0	0	0.0	0	0.0	0
	2012 - 13	0	0	0.0	0	0.0	0
	2013 - 14	0	0	0.0	0	0.0	0
	2014 - 15	0	0	0.0	0	0.0	0
	2015 - 16	0	0	0.0	0	0.0	0

**Note:** Each row represents a fiscal year, beginning with Summer term and ending with Spring.

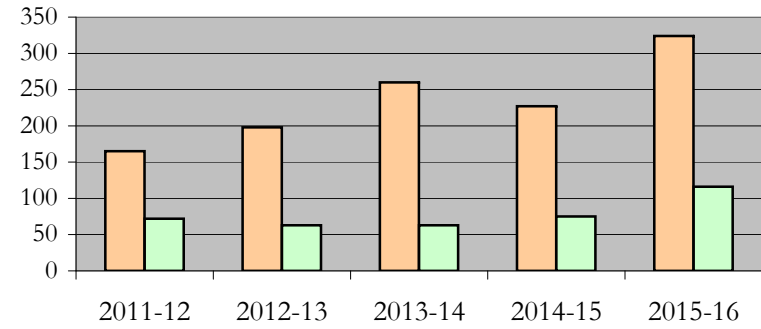
# Degrees Conferred by Gender

College of Engineering  
Fall 2012 - Fall 2016

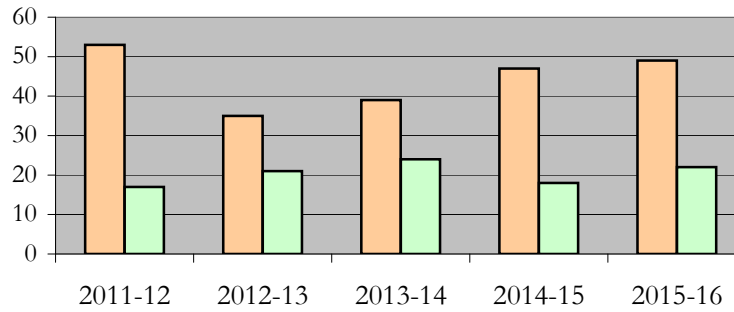
### All Students



### Masters & IBHE Certificate Students



### Doctorate Students



## Appendix A

College of Engineering

Fall 2012 - Fall 2016

### List of program codes included in this document

20FQ1211MENU	20FS1211MENU
20FQ1211NDEU	20FS1211NDEU
20FQ4076NDEU	20FS1290PHD
20FQ4077NDEU	20FS1338NDEG
20FQ4078NDEU	20FS1338PHD
20FQ5001NDEU	20FS1434MS
20FS0106MS	20FS1434NDEG
20FS0106NDEG	20FS1434PHD
20FS0106PHD	20FS1909MS
20FS0112MS	20FS1909PHD
20FS0112NDEG	20FS4076NDEU
20FS0112PHD	20FS4077NDEU
20FS0127MS	20FS4078NDEU
20FS0127NDEG	20FS5001NDEU
20FS0133MS	20FS5085MEE
20FS0133NDEG	20FS5085NDEG
20FS0133PHD	21FS0112MS
20FS0300MS	21FS0127MS
20FS0300NDEG	21FS0133MS
20FS0300PHD	21FS1200MS
20FS0408MS	
20FS0408NDEG	
20FS0408PHD	
20FS1200MS	
20FS1200NDEG	
20FS1200PHD	

**Notes:** 1) Program codes are sorted by alphabetical order in column-wise fashion

2) Program codes highlighted in yellow did not have applications, enrollment, nor degrees conferred in the covered period