

# Matriculation

## Diversity Pipeline

Computer\_Science\_PHD [20FS0112PHD]

Fall 2013 through Fall 2017

| Fall Semester Year | Applied     |               |              |           |             | Admitted    |               |              |           |             | Non-URM Admitted to Applied Yield % | URM Admitted to Applied Yield % | New Enrollment |               |               |           |             | Non-URM Enrolled to Admitted Yield % | URM Enrolled to Admitted Yield % | Total Enrollment |               |              |           |             |
|--------------------|-------------|---------------|--------------|-----------|-------------|-------------|---------------|--------------|-----------|-------------|-------------------------------------|---------------------------------|----------------|---------------|---------------|-----------|-------------|--------------------------------------|----------------------------------|------------------|---------------|--------------|-----------|-------------|
|                    | Grand Total | Non-URM Total |              | URM Total |             | Grand Total | Non-URM Total |              | URM Total |             |                                     |                                 | Grand Total    | Non-URM Total |               | URM Total |             |                                      |                                  | Grand Total      | Non-URM Total |              | URM Total |             |
|                    |             | Count         | %            | Count     | %           |             | Count         | %            | Count     | %           |                                     |                                 |                | Count         | %             | Count     | %           |                                      |                                  |                  | Count         | %            | Count     | %           |
|                    |             |               |              |           |             |             |               |              |           |             |                                     |                                 |                |               |               |           |             |                                      |                                  |                  |               |              |           |             |
| 2013               | 163         | 159           | 97.5%        | 4         | 2.5%        | 70          | 70            | 100.0%       | 0         | 0.0%        | 44.0%                               | 0.0%                            | 14             | 14            | 100.0%        | 0         | 0.0%        | 20.0%                                | 0.0%                             | 101              | 97            | 96.0%        | 4         | 4.0%        |
| 2014               | 173         | 170           | 98.3%        | 3         | 1.7%        | 78          | 78            | 100.0%       | 0         | 0.0%        | 45.9%                               | 0.0%                            | 19             | 19            | 100.0%        | 0         | 0.0%        | 24.4%                                | 0.0%                             | 108              | 104           | 96.3%        | 4         | 3.7%        |
| 2015               | 147         | 141           | 95.9%        | 6         | 4.1%        | 72          | 71            | 98.6%        | 1         | 1.4%        | 50.4%                               | 16.7%                           | 19             | 19            | 100.0%        | 0         | 0.0%        | 26.8%                                | 0.0%                             | 115              | 111           | 96.5%        | 4         | 3.5%        |
| 2016               | 160         | 157           | 98.1%        | 3         | 1.9%        | 49          | 48            | 98.0%        | 1         | 2.0%        | 30.6%                               | 33.3%                           | 14             | 14            | 100.0%        | 0         | 0.0%        | 29.2%                                | 0.0%                             | 113              | 110           | 97.3%        | 3         | 2.7%        |
| 2017               | 144         | 143           | 99.3%        | 1         | 0.7%        | 54          | 53            | 98.1%        | 1         | 1.9%        | 37.1%                               | 100.0%                          | 19             | 19            | 100.0%        | 0         | 0.0%        | 35.8%                                | 0.0%                             | 122              | 122           | 100.0%       | 0         | 0.0%        |
| <b>Average</b>     | <b>157</b>  | <b>154</b>    | <b>97.8%</b> | <b>3</b>  | <b>2.2%</b> | <b>65</b>   | <b>64</b>     | <b>99.1%</b> | <b>1</b>  | <b>0.9%</b> | <b>41.6%</b>                        | <b>17.6%</b>                    | <b>17</b>      | <b>17</b>     | <b>100.0%</b> | <b>0</b>  | <b>0.0%</b> | <b>26.6%</b>                         | <b>0.0%</b>                      | <b>112</b>       | <b>109</b>    | <b>97.3%</b> | <b>3</b>  | <b>2.7%</b> |

**Note:** URM stands for Under-Represented Minority and includes American Indian or Alaska Native; Black or African-American; Hispanic / Latino race/ethnicity groups

# Applications, Admission, & New Enrollment Yields

## by Race/Ethnicity & Gender

Computer\_Science\_PHD [20FS0112PHD]

Fall 2013 through Fall 2017

|          | Fall Semester Year | Total |       | Under Represented Minorities (URM) |       |                           |       |                   |       |           |       | Asian   | Native Hawaiian or Pacific Islander | White   | Two or More Races | International | Race/Eth Not Reported | Male    | Female  |         |         |       |         |       |         |      |
|----------|--------------------|-------|-------|------------------------------------|-------|---------------------------|-------|-------------------|-------|-----------|-------|---------|-------------------------------------|---------|-------------------|---------------|-----------------------|---------|---------|---------|---------|-------|---------|-------|---------|------|
|          |                    |       |       | American Indian or Alaska Native   |       | Black or African American |       | Hispanic / Latino |       | URM Total |       |         |                                     |         |                   |               |                       |         |         |         |         |       |         |       |         |      |
| Applied  | 2013               | 163   |       | 0                                  | 2     | 2                         | 4     | 1                 | 0     | 15        | 0     | 143     | 0                                   | 117     | 46                |               |                       |         |         |         |         |       |         |       |         |      |
|          | 2014               | 173   |       | 0                                  | 3     | 0                         | 3     | 2                 | 0     | 11        | 0     | 157     | 0                                   | 127     | 47                |               |                       |         |         |         |         |       |         |       |         |      |
|          | 2015               | 147   |       | 0                                  | 3     | 3                         | 6     | 5                 | 0     | 7         | 1     | 128     | 0                                   | 101     | 46                |               |                       |         |         |         |         |       |         |       |         |      |
|          | 2016               | 160   |       | 0                                  | 0     | 3                         | 3     | 4                 | 0     | 7         | 0     | 146     | 0                                   | 106     | 54                |               |                       |         |         |         |         |       |         |       |         |      |
|          | 2017               | 144   |       | 0                                  | 0     | 1                         | 1     | 3                 | 0     | 6         | 1     | 133     | 0                                   | 112     | 32                |               |                       |         |         |         |         |       |         |       |         |      |
|          |                    |       | Count | % Yield                            | Count | % Yield                   | Count | % Yield           | Count | % Yield   | Count | % Yield | Count                               | % Yield | Count             | % Yield       | Count                 | Count   | % Yield | Count   | % Yield |       |         |       |         |      |
| Admitted | 2013               | 70    | 42.9  | 0                                  | 0.0   | 0                         | 0.0   | 0                 | 0.0   | 0         | 0.0   | 0       | 0.0                                 | 9       | 60.0              | 0             | 0.0                   | 61      | 42.7    | 0       | 51      | 43.6  | 19      | 41.3  |         |      |
|          | 2014               | 78    | 45.1  | 0                                  | 0.0   | 0                         | 0.0   | 0                 | 0.0   | 0         | 0.0   | 1       | 50.0                                | 0       | 0.0               | 7             | 63.6                  | 0       | 0.0     | 70      | 44.6    | 0     | 54      | 42.5  | 24      | 51.1 |
|          | 2015               | 72    | 49.0  | 0                                  | 0.0   | 0                         | 0.0   | 1                 | 33.3  | 1         | 16.7  | 2       | 40.0                                | 0       | 0.0               | 3             | 42.9                  | 0       | 0.0     | 66      | 51.6    | 0     | 52      | 51.5  | 20      | 43.5 |
|          | 2016               | 49    | 30.6  | 0                                  | 0.0   | 0                         | 0.0   | 1                 | 33.3  | 1         | 33.3  | 2       | 50.0                                | 0       | 0.0               | 2             | 28.6                  | 0       | 0.0     | 44      | 30.1    | 0     | 33      | 31.1  | 16      | 29.6 |
|          | 2017               | 54    | 37.5  | 0                                  | 0.0   | 0                         | 0.0   | 1                 | 100.0 | 1         | 100.0 | 0       | 0.0                                 | 0       | 0.0               | 5             | 83.3                  | 1       | 100.0   | 47      | 35.3    | 0     | 41      | 36.6  | 13      | 40.6 |
|          |                    |       | Count | % Yield                            | Count | % Yield                   | Count | % Yield           | Count | % Yield   | Count | % Yield | Count                               | % Yield | Count             | % Yield       | Count                 | % Yield | Count   | % Yield | Count   | Count | % Yield | Count | % Yield |      |
| Enrolled | 2013               | 14    | 20.0  | 0                                  | 0.0   | 0                         | 0.0   | 0                 | 0.0   | 0         | 0.0   | 0       | 0.0                                 | 0       | 0.0               | 3             | 33.3                  | 0       | 0.0     | 11      | 18.0    | 0     | 8       | 15.7  | 6       | 31.6 |
|          | 2014               | 19    | 24.4  | 0                                  | 0.0   | 0                         | 0.0   | 0                 | 0.0   | 0         | 0.0   | 0       | 0.0                                 | 0       | 0.0               | 3             | 42.9                  | 0       | 0.0     | 16      | 22.9    | 0     | 12      | 22.2  | 7       | 29.2 |
|          | 2015               | 19    | 26.4  | 0                                  | 0.0   | 0                         | 0.0   | 0                 | 0.0   | 0         | 0.0   | 1       | 50.0                                | 0       | 0.0               | 1             | 33.3                  | 0       | 0.0     | 17      | 25.8    | 0     | 14      | 26.9  | 5       | 25.0 |
|          | 2016               | 14    | 28.6  | 0                                  | 0.0   | 0                         | 0.0   | 0                 | 0.0   | 0         | 0.0   | 2       | 100.0                               | 0       | 0.0               | 0             | 0.0                   | 0       | 0.0     | 12      | 27.3    | 0     | 9       | 27.3  | 5       | 31.3 |
|          | 2017               | 19    | 35.2  | 0                                  | 0.0   | 0                         | 0.0   | 0                 | 0.0   | 0         | 0.0   | 0       | 0.0                                 | 0       | 0.0               | 1             | 20.0                  | 1       | 100.0   | 17      | 36.2    | 0     | 16      | 39.0  | 3       | 23.1 |
|          |                    |       | Count | % Yield                            | Count | % Yield                   | Count | % Yield           | Count | % Yield   | Count | % Yield | Count                               | % Yield | Count             | % Yield       | Count                 | % Yield | Count   | % Yield | Count   | Count | % Yield | Count | % Yield |      |

**Notes:**

- 1) URM stands for Under-Represented Minority and includes American Indian or Alaska Native; Black or African-American; Hispanic / Latino race/ethnicity groups
- 2) Unreported Gender identification is not shown; Male and Female total may not match Total
- 3) In rare situations, the "% Yield" columns may be greater than 100. There are three potential reasons for this:
  - a) Students that received Graduate College approved transfers may not have an admission record for the program that they enrolled into.
  - b) Students with a secondary curriculum enrollment may not have an admission record for that secondary program.
  - c) Students who were newly enrolled in the summer term prior to the fall were added to the fall new enrollment totals.

# Applications, Admission, & New Enrollment Yields, cont. by Race/Ethnicity & Gender

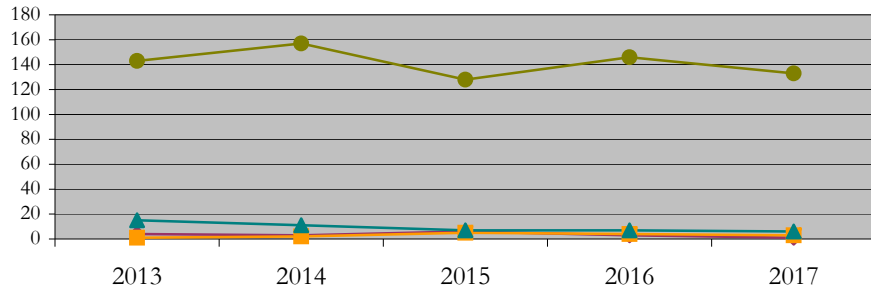
Computer\_Science\_PHD [20FS0112PHD]

Fall 2013 through Fall 2017

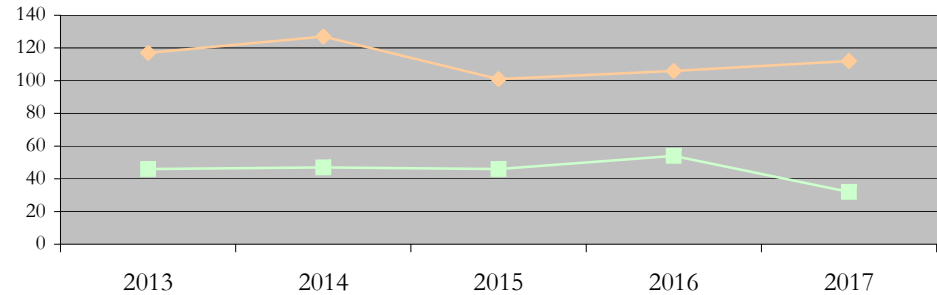
◆ URM Total    ■ Asian    ▲ White    ● International

◆ Male    ■ Female

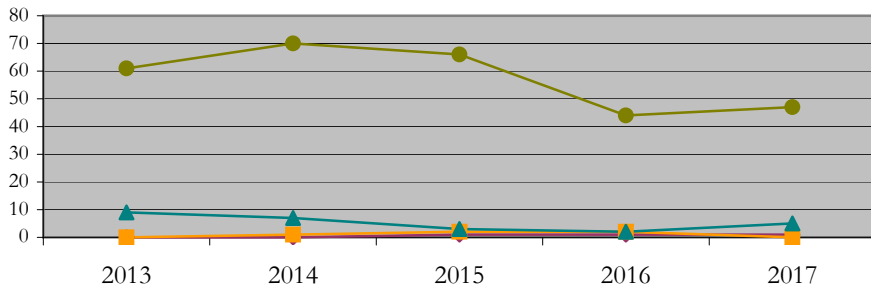
### Applications by Race/Ethnicity



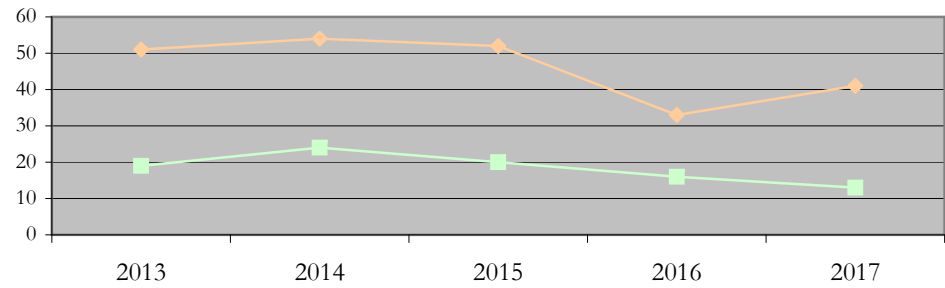
### Applications by Gender



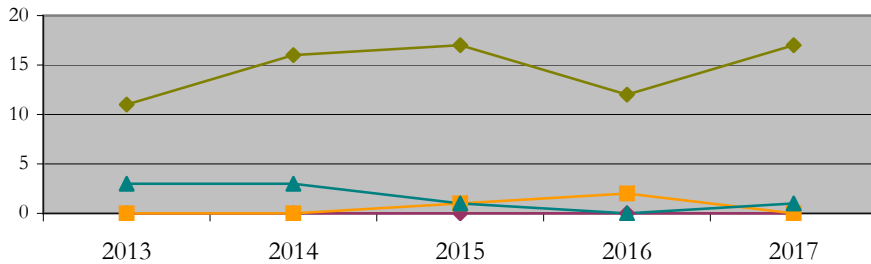
### Admissions by Race/Ethnicity



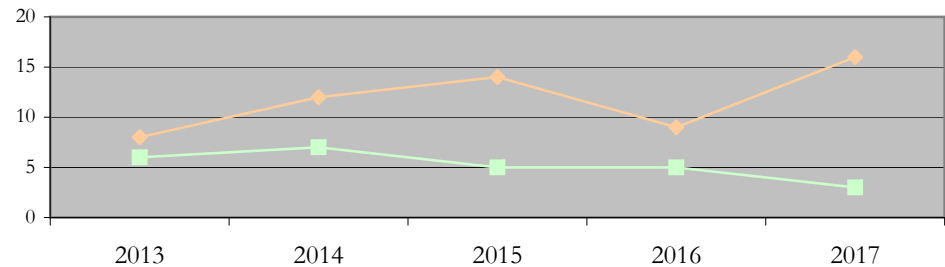
### Admissions by Gender



### New Enrollments by Race/Ethnicity



### New Enrollments by Gender



**Notes:** 1) URM stands for Under-Represented Minority and includes American Indian or Alaska Native; Black or African-American; Hispanic / Latino race/ethnicity groups  
2) Individual URM groups, Native Hawaiian Pacific Islander, Two or More Races, and Other race/ethnicity categories left off these charts due to relatively low numbers

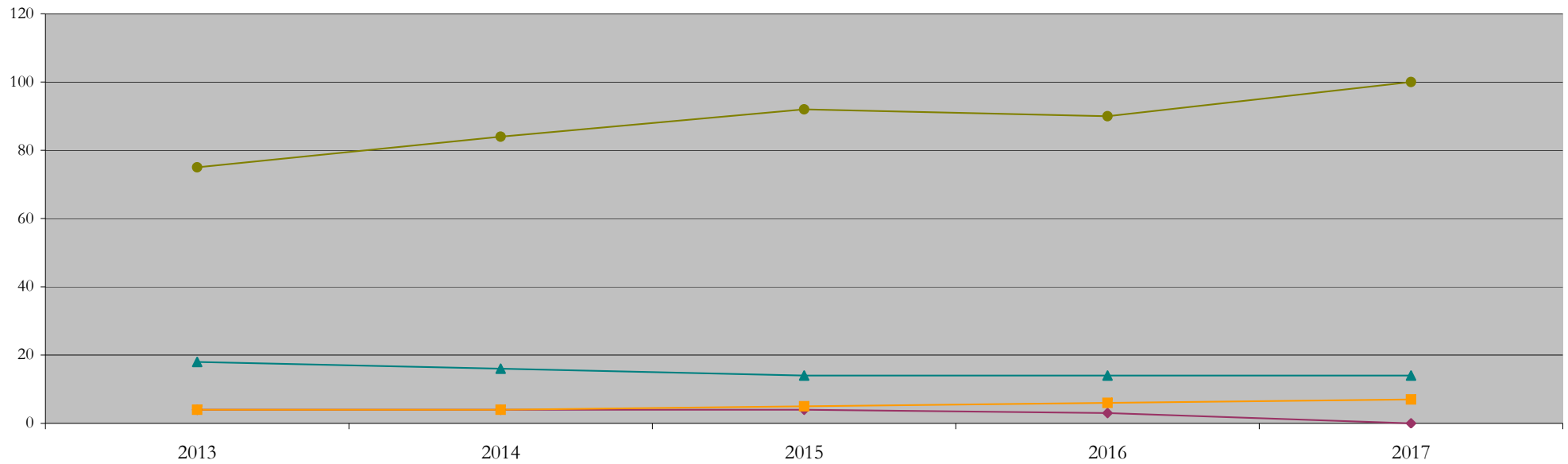
## Total Enrollment (includes secondary curriculum)

### by Race/Ethnicity

Computer\_Science\_PHD [20FS0112PHD]

Fall 2013 through Fall 2017

| Fall Semester Year | Total | Under Represented Minorities (URM) |     |                           |     |                   |     |           |     |       |     | Asian | Native Hawaiian or Pacific Islander | White |      | Two or More Races |     | International |      | Race/Eth Not Reported |
|--------------------|-------|------------------------------------|-----|---------------------------|-----|-------------------|-----|-----------|-----|-------|-----|-------|-------------------------------------|-------|------|-------------------|-----|---------------|------|-----------------------|
|                    |       | American Indian or Alaska Native   |     | Black or African American |     | Hispanic / Latino |     | URM Total |     |       |     |       |                                     |       |      |                   |     |               |      |                       |
|                    |       | Count                              | %   | Count                     | %   | Count             | %   | Count     | %   | Count | %   |       |                                     | Count | %    | Count             | %   | Count         | %    |                       |
| 2013               | 101   | 0                                  | 0.0 | 2                         | 2.0 | 2                 | 2.0 | 4         | 4.0 | 4     | 4.0 | 0     | 0.0                                 | 18    | 17.8 | 0                 | 0.0 | 75            | 74.3 | 0                     |
| 2014               | 108   | 0                                  | 0.0 | 2                         | 1.9 | 2                 | 1.9 | 4         | 3.7 | 4     | 3.7 | 0     | 0.0                                 | 16    | 14.8 | 0                 | 0.0 | 84            | 77.8 | 0                     |
| 2015               | 115   | 0                                  | 0.0 | 2                         | 1.7 | 2                 | 1.7 | 4         | 3.5 | 5     | 4.3 | 0     | 0.0                                 | 14    | 12.2 | 0                 | 0.0 | 92            | 80.0 | 0                     |
| 2016               | 113   | 0                                  | 0.0 | 2                         | 1.8 | 1                 | 0.9 | 3         | 2.7 | 6     | 5.3 | 0     | 0.0                                 | 14    | 12.4 | 0                 | 0.0 | 90            | 79.6 | 0                     |
| 2017               | 122   | 0                                  | 0.0 | 0                         | 0.0 | 0                 | 0.0 | 0         | 0.0 | 7     | 5.7 | 0     | 0.0                                 | 14    | 11.5 | 1                 | 0.8 | 100           | 82.0 | 0                     |



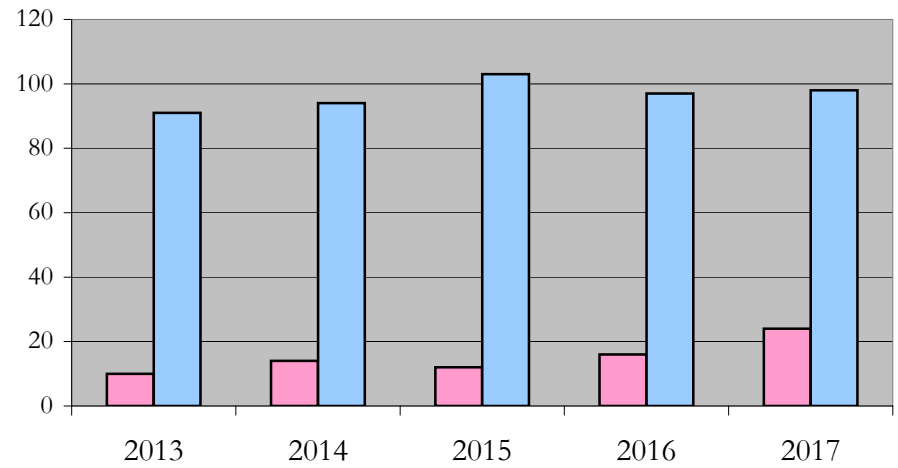
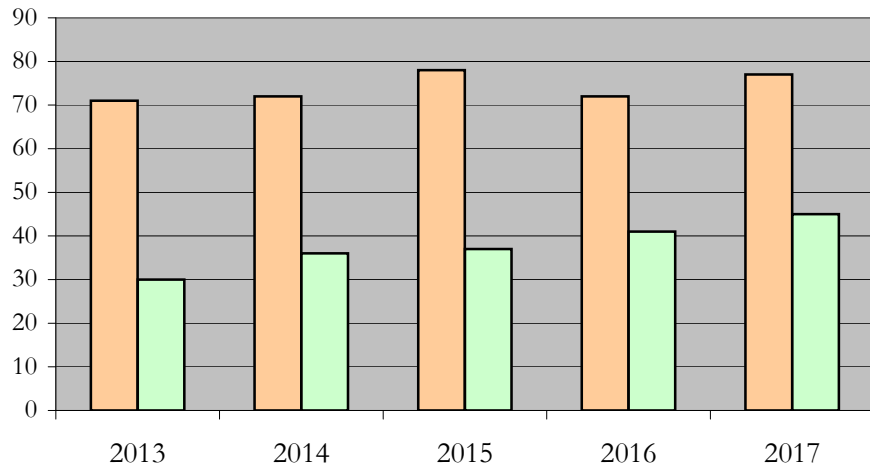
**Notes:** 1) URM stands for Under-Represented Minority and includes American Indian or Alaska Native; Black or African-American; Hispanic / Latino race/ethnicity groups  
 2) Individual URM groups, Native Hawaiian Pacific Islander, Two or More Races, and Other race/ethnicity categories left off this chart due to relatively low numbers

**Total Enrollment (includes secondary curriculum)  
by Student Type, Gender, and Enrollment Time**

Computer\_Science\_PHD [20FS0112PHD]

Fall 2013 through Fall 2017

| Fall Semester Year | Total | New   |      | Continuing |      | Male  |      | Female |      | Gender Not Reported | Part-time |      | Full-time |      |
|--------------------|-------|-------|------|------------|------|-------|------|--------|------|---------------------|-----------|------|-----------|------|
|                    |       | Count | %    | Count      | %    | Count | %    | Count  | %    | Count               | Count     | %    | Count     | %    |
| 2013               | 101   | 14    | 13.9 | 87         | 86.1 | 71    | 70.3 | 30     | 29.7 | 0                   | 10        | 9.9  | 91        | 90.1 |
| 2014               | 108   | 19    | 17.6 | 89         | 82.4 | 72    | 66.7 | 36     | 33.3 | 0                   | 14        | 13.0 | 94        | 87.0 |
| 2015               | 115   | 19    | 16.5 | 96         | 83.5 | 78    | 67.8 | 37     | 32.2 | 0                   | 12        | 10.4 | 103       | 89.6 |
| 2016               | 113   | 14    | 12.4 | 99         | 87.6 | 72    | 63.7 | 41     | 36.3 | 0                   | 16        | 14.2 | 97        | 85.8 |
| 2017               | 122   | 19    | 15.6 | 103        | 84.4 | 77    | 63.1 | 45     | 36.9 | 0                   | 24        | 19.7 | 98        | 80.3 |



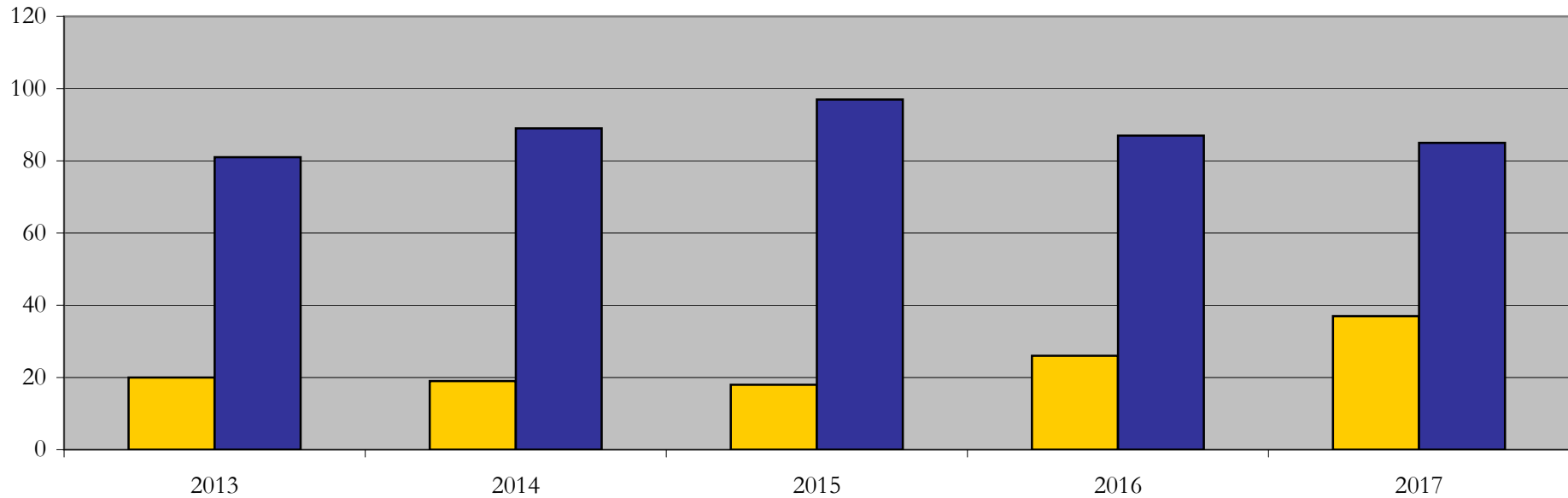
## Enrollment & Degrees Conferred

### by Primary/Secondary, Average Age, State Residency

Computer\_Science\_PHD [20FS0112PHD]

Fall 2013 through Fall 2017

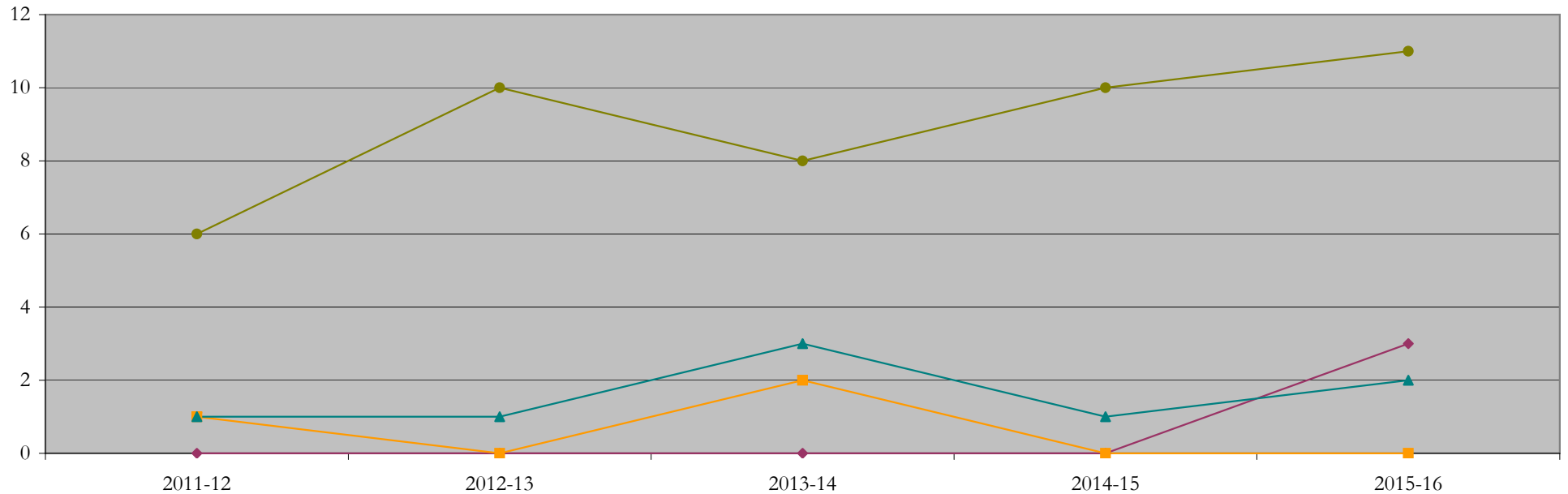
| Fall Semester Year | Enrollment |         |           | Average Age         |                            |                                | State Residency of Total Enrollment |                |                       |                  |                |                       |
|--------------------|------------|---------|-----------|---------------------|----------------------------|--------------------------------|-------------------------------------|----------------|-----------------------|------------------|----------------|-----------------------|
|                    | Total      | Primary | Secondary | Fall New Enrollment | Fall Continuing Enrollment | Academic Year Graduating Class | Residents                           |                |                       | Non-Residents    |                |                       |
|                    |            |         |           |                     |                            |                                | Total Enrollment                    | New Enrollment | Continuing Enrollment | Total Enrollment | New Enrollment | Continuing Enrollment |
| 2013               | 101        | 101     | 0         | 27                  | 29                         | 31                             | 20                                  | 3              | 17                    | 81               | 11             | 70                    |
| 2014               | 108        | 107     | 1         | 25                  | 29                         | 32                             | 19                                  | 1              | 18                    | 89               | 18             | 71                    |
| 2015               | 115        | 115     | 0         | 26                  | 29                         | 30                             | 18                                  | 2              | 16                    | 97               | 17             | 80                    |
| 2016               | 113        | 113     | 0         | 26                  | 29                         | 29                             | 26                                  | 7              | 19                    | 87               | 7              | 80                    |
| 2017               | 122        | 122     | 0         | 27                  | 29                         | 29                             | 37                                  | 6              | 31                    | 85               | 13             | 72                    |



## Degrees Conferred by Race/Ethnicity

Computer\_Science\_PHD [20FS0112PHD]  
AY2011-12 through 2015-16

| Academic Year | Total | Under Represented Minorities (URM) |     |                           |     |                   |      |           |      | Asian |      | Native Hawaiian or Pacific |     | White |      | Two or More Races |     | International |      | Not Reported |
|---------------|-------|------------------------------------|-----|---------------------------|-----|-------------------|------|-----------|------|-------|------|----------------------------|-----|-------|------|-------------------|-----|---------------|------|--------------|
|               |       | American Indian or Alaska Native   |     | Black or African American |     | Hispanic / Latino |      | URM Total |      | Count | %    | Count                      | %   | Count | %    | Count             | %   | Count         | %    |              |
|               |       | Count                              | %   | Count                     | %   | Count             | %    | Count     | %    |       |      |                            |     |       |      |                   |     |               |      |              |
| 2012 - 2013   | 8     | 0                                  | 0.0 | 0                         | 0.0 | 0                 | 0.0  | 0         | 0.0  | 1     | 12.5 | 0                          | 0.0 | 1     | 12.5 | 0                 | 0.0 | 6             | 75.0 | 0            |
| 2013 - 2014   | 11    | 0                                  | 0.0 | 0                         | 0.0 | 0                 | 0.0  | 0         | 0.0  | 0     | 0.0  | 0                          | 0.0 | 1     | 9.1  | 0                 | 0.0 | 10            | 90.9 | 0            |
| 2014 - 2015   | 13    | 0                                  | 0.0 | 0                         | 0.0 | 0                 | 0.0  | 0         | 0.0  | 2     | 15.4 | 0                          | 0.0 | 3     | 23.1 | 0                 | 0.0 | 8             | 61.5 | 0            |
| 2015 - 2016   | 11    | 0                                  | 0.0 | 0                         | 0.0 | 0                 | 0.0  | 0         | 0.0  | 0     | 0.0  | 0                          | 0.0 | 1     | 9.1  | 0                 | 0.0 | 10            | 90.9 | 0            |
| 2016 - 2017   | 16    | 0                                  | 0.0 | 1                         | 6.3 | 2                 | 12.5 | 3         | 18.8 | 0     | 0.0  | 0                          | 0.0 | 2     | 12.5 | 0                 | 0.0 | 11            | 68.8 | 0            |



**Notes:** 1) URM stands for Under-Represented Minority and includes American Indian or Alaska Native; Black or African-American; Hispanic / Latino race/ethnicity groups  
2) Individual URM groups, Native Hawaiian Pacific Islander, Two or More Races, and Other race/ethnicity categories left off this chart due to relatively low numbers

## Degrees Conferred

### by Gender

Computer\_Science\_PHD [20FS0112PHD]

AY2011-12 through 2015-16

| Academic Year | Total | Male  |      | Female |      | Not Reported |
|---------------|-------|-------|------|--------|------|--------------|
|               |       | Count | %    | Count  | %    |              |
| 2012 - 2013   | 8     | 5     | 62.5 | 3      | 37.5 | 0            |
| 2013 - 2014   | 11    | 9     | 81.8 | 2      | 18.2 | 0            |
| 2014 - 2015   | 13    | 11    | 84.6 | 2      | 15.4 | 0            |
| 2015 - 2016   | 11    | 9     | 81.8 | 2      | 18.2 | 0            |
| 2016 - 2017   | 16    | 11    | 68.8 | 5      | 31.3 | 0            |

