

# Matriculation

## Diversity Pipeline

Civil\_Engineering\_PHD [20FS0106PHD]

Fall 2014 through Fall 2018

Fall Semester Year	Applied					Admitted					Non-URM Admitted to Applied Yield %	URM Admitted to Applied Yield %	New Enrollment					Non-URM Enrolled to Admitted Yield %	URM Enrolled to Admitted Yield %	Total Enrollment				
	Grand Total	Non-URM Total		URM Total		Grand Total	Non-URM Total		URM Total				Grand Total	Non-URM Total		URM Total				Grand Total	Non-URM Total		URM Total	
		Count	%	Count	%		Count	%	Count	%				Count	%	Count	%				Count	%	Count	%
	Count	%	Count	%	Count	%	Count	%	Count	%			Count	%	Count	%	Count			%	Count	%	Count	%
2014	62	61	98.4%	1	1.6%	32	32	100.0%	0	0.0%	52.5%	0.0%	5	5	100.0%	0	0.0%	15.6%	0.0%	53	53	100.0%	0	0.0%
2015	64	64	100.0%	0	0.0%	20	20	100.0%	0	0.0%	31.3%	0.0%	8	8	100.0%	0	0.0%	40.0%	0.0%	56	54	96.4%	2	3.6%
2016	45	45	100.0%	0	0.0%	11	11	100.0%	0	0.0%	24.4%	0.0%	5	5	100.0%	0	0.0%	45.5%	0.0%	44	42	95.5%	2	4.5%
2017	73	73	100.0%	0	0.0%	16	16	100.0%	0	0.0%	21.9%	0.0%	13	13	100.0%	0	0.0%	81.3%	0.0%	53	52	98.1%	1	1.9%
2018	41	40	97.6%	1	2.4%	9	9	100.0%	0	0.0%	22.5%	0.0%	4	4	100.0%	0	0.0%	44.4%	0.0%	50	48	96.0%	2	4.0%
<b>Average</b>	<b>57</b>	<b>57</b>	<b>99.3%</b>	<b>0</b>	<b>0.7%</b>	<b>18</b>	<b>18</b>	<b>100.0%</b>	<b>0</b>	<b>0.0%</b>	<b>31.1%</b>	<b>0.0%</b>	<b>7</b>	<b>7</b>	<b>100.0%</b>	<b>0</b>	<b>0.0%</b>	<b>39.8%</b>	<b>0.0%</b>	<b>51</b>	<b>50</b>	<b>97.3%</b>	<b>1.4</b>	<b>2.7%</b>

**Note:** URM stands for Under-Represented Minority and includes American Indian or Alaska Native; Black or African-American; Hispanic / Latino race/ethnicity groups

# Applications, Admission, & New Enrollment Yields

## by Race/Ethnicity & Gender

Civil\_Engineering\_PHD [20FS0106PHD]

Fall 2014 through Fall 2018

	Fall Semester Year	Total		Under Represented Minorities (URM)								Asian		Native Hawaiian or Pacific Islander		White		Two or More Races		International		Race/Eth Not Reported		Male		Female	
				American Indian or Alaska Native		Black or African American		Hispanic / Latino		URM Total																	
Applied	2014	62		0		0		1		1		0		0		2		0		59		0		55		7	
	2015	64		0		0		0		0		0		0		5		0		58		1		46		18	
	2016	45		0		0		0		0		1		0		5		0		39		0		31		14	
	2017	73		0		0		0		0		2		0		4		0		67		0		51		22	
	2018	41		0		1		0		1		1		0		1		0		35		3		31		10	
		Count	% Yield	Count	% Yield	Count	% Yield	Count	% Yield	Count	% Yield	Count	% Yield	Count	% Yield	Count	% Yield	Count	% Yield	Count	% Yield	Count	% Yield	Count	% Yield	Count	% Yield
Admitted	2014	32	51.6	0	0.0	0	0.0	0	0.0	0	0.0	0	0.0	0	0.0	1	50.0	0	0.0	31	52.5	0		25	45.5	7	100.0
	2015	20	31.3	0	0.0	0	0.0	0	0.0	0	0.0	0	0.0	0	0.0	1	20.0	0	0.0	18	31.0	1		14	30.4	6	33.3
	2016	11	24.4	0	0.0	0	0.0	0	0.0	0	0.0	0	0.0	0	0.0	2	40.0	0	0.0	9	23.1	0		6	19.4	5	35.7
	2017	16	21.9	0	0.0	0	0.0	0	0.0	0	0.0	2	100.0	0	0.0	1	25.0	0	0.0	13	19.4	0		13	25.5	3	13.6
	2018	9	22.0	0	0.0	0	0.0	0	0.0	0	0.0	0	0.0	0	0.0	1	100.0	0	0.0	8	22.9	0		9	29.0	0	0.0
		Count	% Yield	Count	% Yield	Count	% Yield	Count	% Yield	Count	% Yield	Count	% Yield	Count	% Yield	Count	% Yield	Count	% Yield	Count	% Yield	Count	% Yield	Count	% Yield	Count	% Yield
Enrolled	2014	5	15.6	0	0.0	0	0.0	0	0.0	0	0.0	0	0.0	0	0.0	1	100.0	0	0.0	4	12.9	0		4	16.0	1	14.3
	2015	8	40.0	0	0.0	0	0.0	0	0.0	0	0.0	0	0.0	0	0.0	0	0.0	0	0.0	8	44.4	0		5	35.7	3	50.0
	2016	5	45.5	0	0.0	0	0.0	0	0.0	0	0.0	0	0.0	0	0.0	0	0.0	0	0.0	5	55.6	0		3	50.0	2	40.0
	2017	13	81.3	0	0.0	0	0.0	0	0.0	0	0.0	2	100.0	0	0.0	1	100.0	0	0.0	10	76.9	0		10	76.9	3	100.0
	2018	4	44.4	0	0.0	0	0.0	0	0.0	0	0.0	0	0.0	0	0.0	1	100.0	0	0.0	3	37.5	0		4	44.4	0	0.0

**Notes:**

- 1) URM stands for Under-Represented Minority and includes American Indian or Alaska Native; Black or African-American; Hispanic / Latino race/ethnicity groups
- 2) Unreported Gender identification is not shown; Male and Female total may not match Total
- 3) In rare situations, the "% Yield" columns may be greater than 100. There are three potential reasons for this:
  - a) Students that received Graduate College approved transfers may not have an admission record for the program that they enrolled into.
  - b) Students with a secondary curriculum enrollment may not have an admission record for that secondary program.
  - c) Students who were newly enrolled in the summer term prior to the fall were added to the fall new enrollment totals.

# Applications, Admission, & New Enrollment Yields, cont. by Race/Ethnicity & Gender

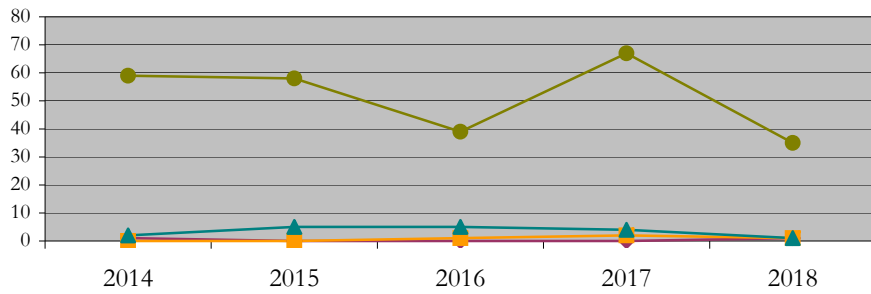
Civil\_Engineering\_PHD [20FS0106PHD]

Fall 2014 through Fall 2018

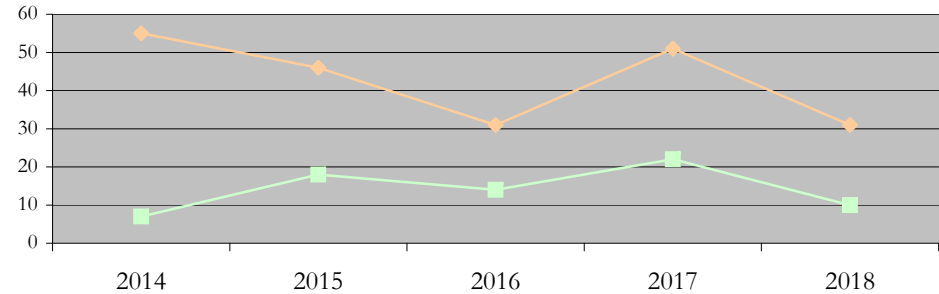
URM Total Asian White International

Male Female

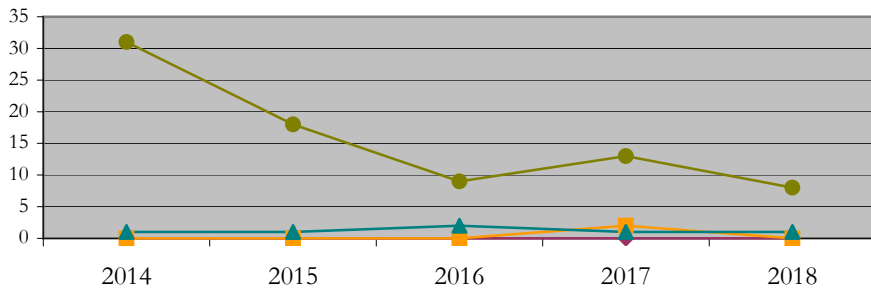
Applications by Race/Ethnicity



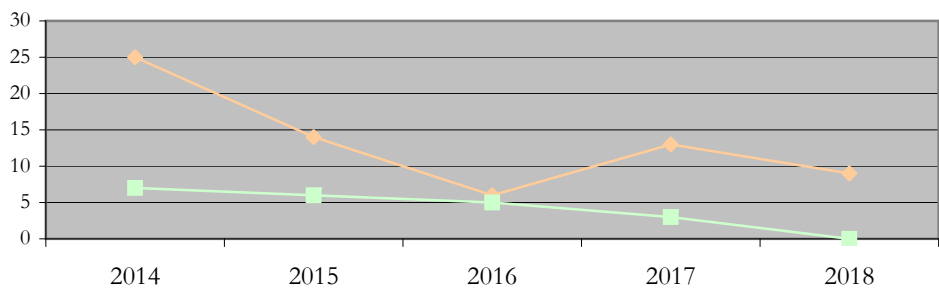
Applications by Gender



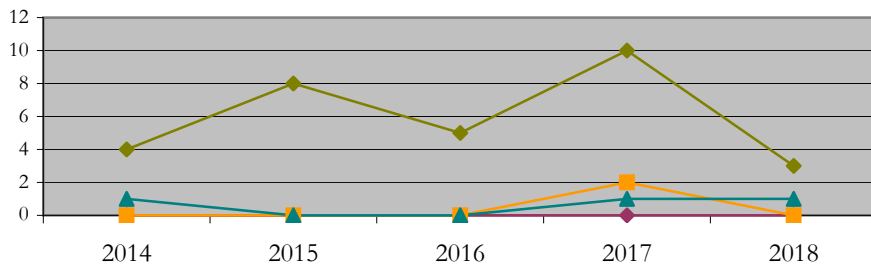
Admissions by Race/Ethnicity



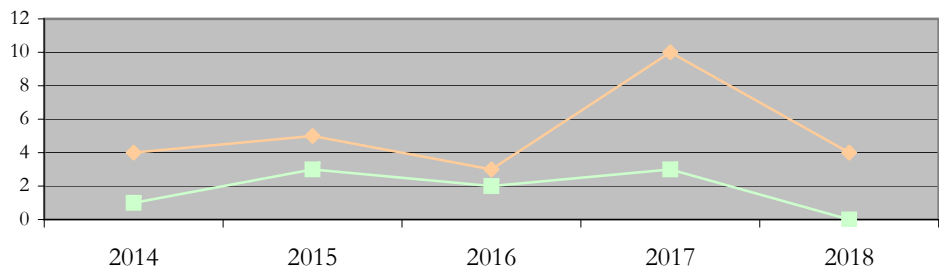
Admissions by Gender



New Enrollments by Race/Ethnicity



New Enrollments by Gender



**Notes:** 1) URM stands for Under-Represented Minority and includes American Indian or Alaska Native; Black or African-American; Hispanic / Latino race/ethnicity groups  
2) Individual URM groups, Native Hawaiian Pacific Islander, Two or More Races, and Other race/ethnicity categories left off these charts due to relatively low numbers

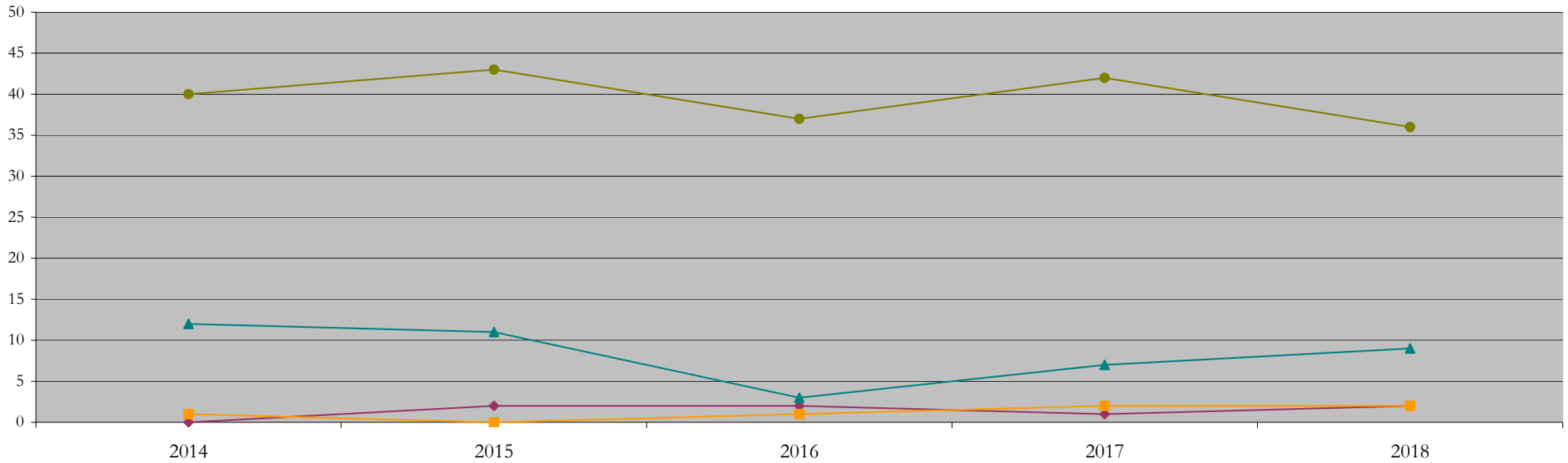
**Total Enrollment (includes secondary curriculum)**

**by Race/Ethnicity**

Civil\_Engineering\_PHD [20FS0106PHD]

Fall 2014 through Fall 2018

Fall Semester Year	Total	Under Represented Minorities (URM)																		
		American Indian or Alaska Native		Black or African American		Hispanic / Latino		URM Total		Asian		Native Hawaiian or Pacific Islander		White		Two or More Races		International		Race/Eth Not Reported
		Count	%	Count	%	Count	%	Count	%	Count	%	Count	%	Count	%	Count	%	Count	%	Count
2014	53	0	0.0	0	0.0	0	0.0	0	0.0	1	1.9	0	0.0	12	22.6	0	0.0	40	75.5	0
2015	56	0	0.0	2	3.6	0	0.0	2	3.6	0	0.0	0	0.0	11	19.6	0	0.0	43	76.8	0
2016	44	0	0.0	2	4.5	0	0.0	2	4.5	1	2.3	0	0.0	3	6.8	0	0.0	37	84.1	1
2017	53	0	0.0	1	1.9	0	0.0	1	1.9	2	3.8	0	0.0	7	13.2	1	1.9	42	79.2	0
2018	50	0	0.0	2	4.0	0	0.0	2	4.0	2	4.0	0	0.0	9	18.0	1	2.0	36	72.0	0



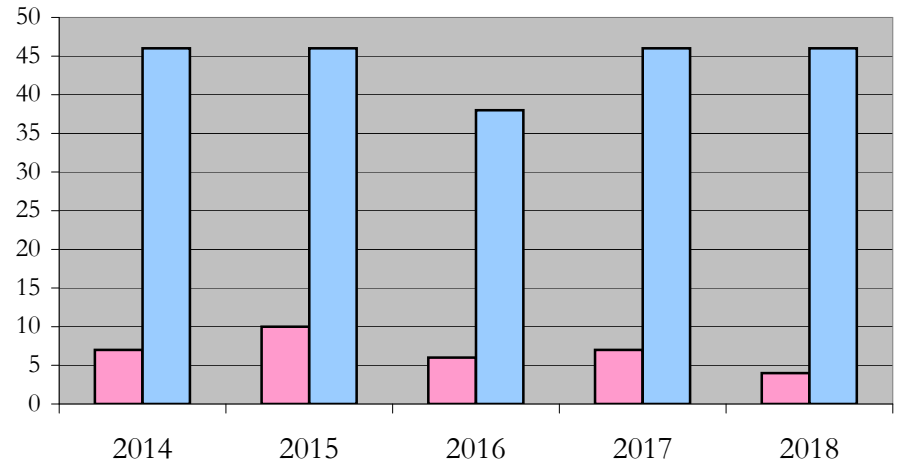
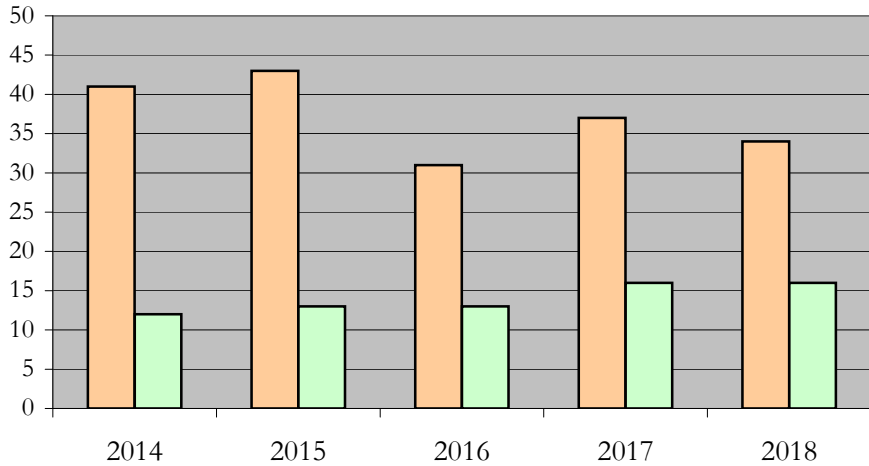
**Notes:** 1) URM stands for Under-Represented Minority and includes American Indian or Alaska Native; Black or African-American; Hispanic / Latino race/ethnicity groups  
 2) Individual URM groups, Native Hawaiian Pacific Islander, Two or More Races, and Other race/ethnicity categories left off this chart due to relatively low numbers

**Total Enrollment (includes secondary curriculum)  
by Student Type, Gender, and Enrollment Time**

Civil\_Engineering\_PHD [20FS0106PHD]

Fall 2014 through Fall 2018

Fall Semester Year	Total	New		Continuing		Male		Female		Gender Not Reported	Part-time		Full-time	
		Count	%	Count	%	Count	%	Count	%		Count	%	Count	%
2014	53	5	9.4	48	90.6	41	77.4	12	22.6	0	7	13.2	46	86.8
2015	56	8	14.3	48	85.7	43	76.8	13	23.2	0	10	17.9	46	82.1
2016	44	5	11.4	39	88.6	31	70.5	13	29.5	0	6	13.6	38	86.4
2017	53	13	24.5	40	75.5	37	69.8	16	30.2	0	7	13.2	46	86.8
2018	50	4	8.0	46	92.0	34	68.0	16	32.0	0	4	8.0	46	92.0



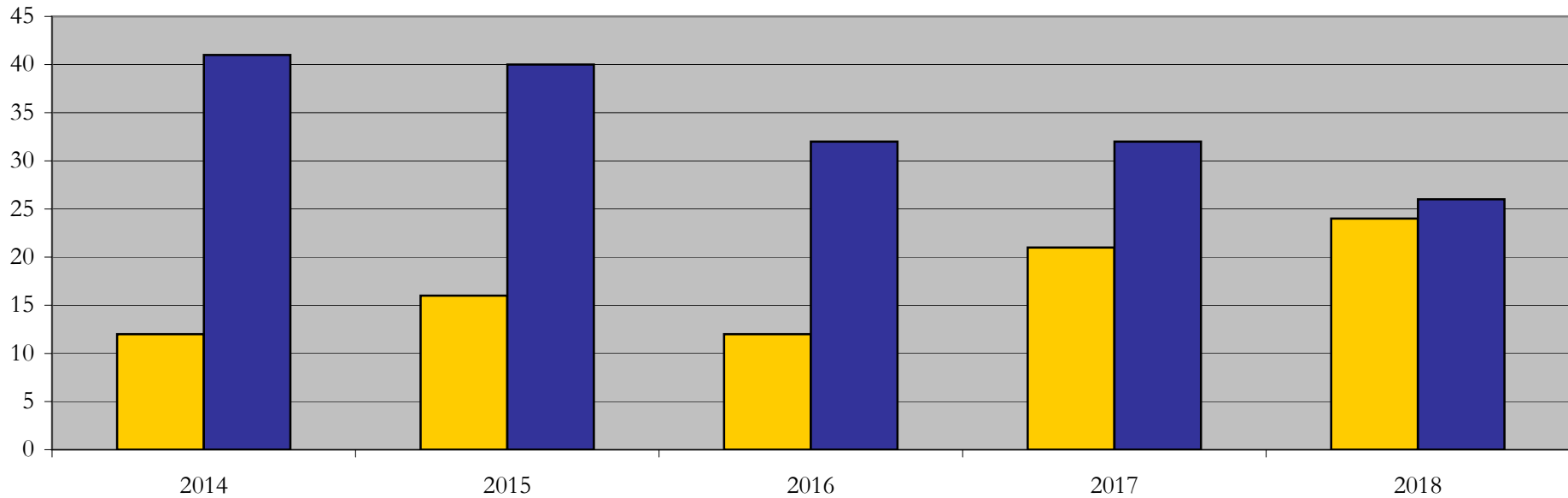
## Enrollment & Degrees Conferred

### by Primary/Secondary, Average Age, State Residency

Civil\_Engineering\_PHD [20FS0106PHD]

Fall 2014 through Fall 2018

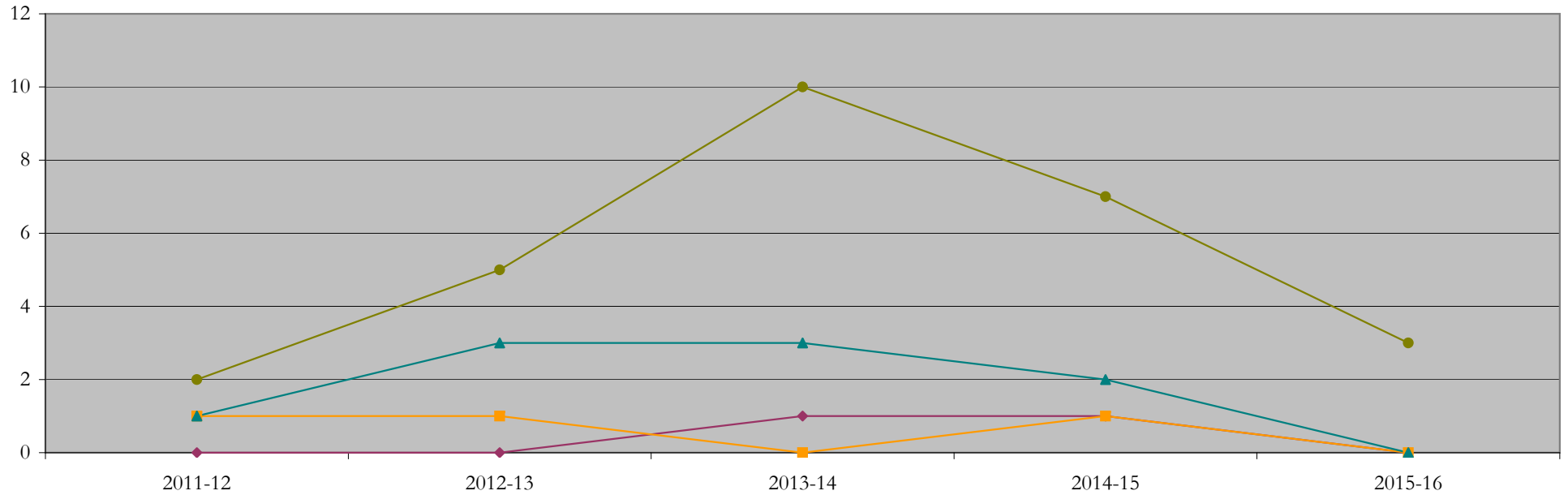
Fall Semester Year	Enrollment			Average Age			State Residency of Total Enrollment					
	Total	Primary	Secondary	Fall New Enrollment	Fall Continuing Enrollment	Academic Year Graduating Class	Residents			Non-Residents		
							Total Enrollment	New Enrollment	Continuing Enrollment	Total Enrollment	New Enrollment	Continuing Enrollment
2014	53	53	0	27	31	28	12	1	11	41	4	37
2015	56	55	1	28	31	31	16	2	14	40	6	34
2016	44	43	1	27	31	32	12	2	10	32	3	29
2017	53	52	1	33	31	31	21	8	13	32	5	27
2018	50	50	0	23	32	29	24	3	21	26	1	25



## Degrees Conferred by Race/Ethnicity

Civil\_Engineering\_PHD [20FS0106PHD]  
AY2011-12 through 2015-16

Academic Year	Total	Under Represented Minorities (URM)								Asian		Native Hawaiian or Pacific		White		Two or More Races		International		Not Reported
		American Indian or Alaska Native		Black or African American		Hispanic / Latino		URM Total		Count	%	Count	%	Count	%	Count	%	Count	%	
		Count	%	Count	%	Count	%	Count	%											
2013 - 2014	4	0	0.0	0	0.0	0	0.0	0	0.0	1	25.0	0	0.0	1	25.0	0	0.0	2	50.0	0
2014 - 2015	9	0	0.0	0	0.0	0	0.0	0	0.0	1	11.1	0	0.0	3	33.3	0	0.0	5	55.6	0
2015 - 2016	14	0	0.0	1	7.1	0	0.0	1	7.1	0	0.0	0	0.0	3	21.4	0	0.0	10	71.4	0
2016 - 2017	12	0	0.0	1	8.3	0	0.0	1	8.3	1	8.3	0	0.0	2	16.7	0	0.0	7	58.3	1
2017 - 2018	3	0	0.0	0	0.0	0	0.0	0	0.0	0	0.0	0	0.0	0	0.0	0	0.0	3	100.0	0



**Notes:** 1) URM stands for Under-Represented Minority and includes American Indian or Alaska Native; Black or African-American; Hispanic / Latino race/ethnicity groups  
2) Individual URM groups, Native Hawaiian Pacific Islander, Two or More Races, and Other race/ethnicity categories left off this chart due to relatively low numbers

## Degrees Conferred

### by Gender

Civil\_Engineering\_PHD [20FS0106PHD]

AY2011-12 through 2015-16

Academic Year	Total	Male		Female		Not Reported
		Count	%	Count	%	
2013 - 2014	4	0	0.0	4	100.0	0
2014 - 2015	9	4	44.4	5	55.6	0
2015 - 2016	14	13	92.9	1	7.1	0
2016 - 2017	12	10	83.3	2	16.7	0
2017 - 2018	3	2	66.7	1	33.3	0

