

Matriculation

Diversity Pipeline

Chemical_Engineering_PHD [20FS0300PHD]

Fall 2013 through Fall 2017

Fall Semester Year	Applied					Admitted					Non-URM Admitted to Applied Yield %	URM Admitted to Applied Yield %	New Enrollment					Non-URM Enrolled to Admitted Yield %	URM Enrolled to Admitted Yield %	Total Enrollment				
	Grand Total	Non-URM Total		URM Total		Grand Total	Non-URM Total		URM Total				Grand Total	Non-URM Total		URM Total				Grand Total	Non-URM Total		URM Total	
		Count	%	Count	%		Count	%	Count	%				Count	%	Count	%				Count	%	Count	%
	Count	%	Count	%	Count	%	Count	%	Count	%			Count	%	Count	%	Count			%	Count	%	Count	%
2013	68	67	98.5%	1	1.5%	27	27	100.0%	0	0.0%	40.3%	0.0%	8	8	100.0%	0	0.0%	29.6%	0.0%	34	34	100.0%	0	0.0%
2014	72	72	100.0%	0	0.0%	29	29	100.0%	0	0.0%	40.3%	0.0%	9	9	100.0%	0	0.0%	31.0%	0.0%	37	37	100.0%	0	0.0%
2015	49	48	98.0%	1	2.0%	24	23	95.8%	1	4.2%	47.9%	100.0%	7	7	100.0%	0	0.0%	30.4%	0.0%	38	37	97.4%	1	2.6%
2016	61	61	100.0%	0	0.0%	23	23	100.0%	0	0.0%	37.7%	0.0%	5	5	100.0%	0	0.0%	21.7%	0.0%	41	38	92.7%	3	7.3%
2017	73	70	95.9%	3	4.1%	30	29	96.7%	1	3.3%	41.4%	33.3%	11	11	100.0%	0	0.0%	37.9%	0.0%	49	46	93.9%	3	6.1%
Average	65	64	98.5%	1	1.5%	27	26	98.5%	0	1.5%	41.2%	40.0%	8	8	100.0%	0	0.0%	30.5%	0.0%	40	38	96.5%	1.4	3.5%

Note: URM stands for Under-Represented Minority and includes American Indian or Alaska Native; Black or African-American; Hispanic / Latino race/ethnicity groups

Applications, Admission, & New Enrollment Yields

by Race/Ethnicity & Gender

Chemical_Engineering_PHD [20FS0300PHD]

Fall 2013 through Fall 2017

	Fall Semester Year	Total	Under Represented Minorities (URM)										Race/Eth Not Reported	Male	Female												
			American Indian or Alaska Native		Black or African American		Hispanic / Latino		URM Total		Asian					Native Hawaiian or Pacific Islander		White		Two or More Races		International					
		Count	% Yield	Count	% Yield	Count	% Yield	Count	% Yield	Count	% Yield	Count	% Yield	Count	% Yield	Count	% Yield	Count	% Yield	Count	% Yield	Count	% Yield	Count	% Yield		
Applied	2013	68		0		1		0		1		2		0		3		0		62		0		47		20	
	2014	72		0		0		0		0		0		0		9		1		61		1		51		21	
	2015	49		0		0		1		1		0		0		6		0		41		1		34		15	
	2016	61		0		0		0		0		1		0		2		0		58		0		37		24	
	2017	73		0		1		2		3		1		0		5		0		64		0		49		23	
Admitted	2013	27	39.7	0	0.0	0	0.0	0	0.0	0	0.0	1	50.0	0	0.0	2	66.7	0	0.0	24	38.7	0		16	34.0	10	50.0
	2014	29	40.3	0	0.0	0	0.0	0	0.0	0	0.0	0	0.0	0	0.0	5	55.6	0	0.0	23	37.7	1		19	37.3	10	47.6
	2015	24	49.0	0	0.0	0	0.0	1	100.0	1	100.0	0	0.0	0	0.0	4	66.7	0	0.0	18	43.9	1		15	44.1	9	60.0
	2016	23	37.7	0	0.0	0	0.0	0	0.0	0	0.0	0	0.0	0	0.0	2	100.0	0	0.0	21	36.2	0		15	40.5	8	33.3
	2017	30	41.1	0	0.0	1	100.0	0	0.0	1	33.3	0	0.0	0	0.0	3	60.0	0	0.0	26	40.6	0		21	42.9	9	39.1
Enrolled	2013	8	29.6	0	0.0	0	0.0	0	0.0	0	0.0	1	100.0	0	0.0	1	50.0	0	0.0	6	25.0	0		3	18.8	5	50.0
	2014	9	31.0	0	0.0	0	0.0	0	0.0	0	0.0	0	0.0	0	0.0	2	40.0	0	0.0	6	26.1	1		7	36.8	2	20.0
	2015	7	29.2	0	0.0	0	0.0	0	0.0	0	0.0	0	0.0	0	0.0	1	25.0	0	0.0	6	33.3	0		4	26.7	3	33.3
	2016	5	21.7	0	0.0	0	0.0	0	0.0	0	0.0	0	0.0	0	0.0	0	0.0	0	0.0	5	23.8	0		4	26.7	1	12.5
	2017	11	36.7	0	0.0	0	0.0	0	0.0	0	0.0	0	0.0	0	0.0	1	33.3	0	0.0	10	38.5	0		8	38.1	3	33.3

Notes:

- 1) URM stands for Under-Represented Minority and includes American Indian or Alaska Native; Black or African-American; Hispanic / Latino race/ethnicity groups
- 2) Unreported Gender identification is not shown; Male and Female total may not match Total
- 3) In rare situations, the "% Yield" columns may be greater than 100. There are three potential reasons for this:
 - a) Students that received Graduate College approved transfers may not have an admission record for the program that they enrolled into.
 - b) Students with a secondary curriculum enrollment may not have an admission record for that secondary program.
 - c) Students who were newly enrolled in the summer term prior to the fall were added to the fall new enrollment totals.

Applications, Admission, & New Enrollment Yields, cont. by Race/Ethnicity & Gender

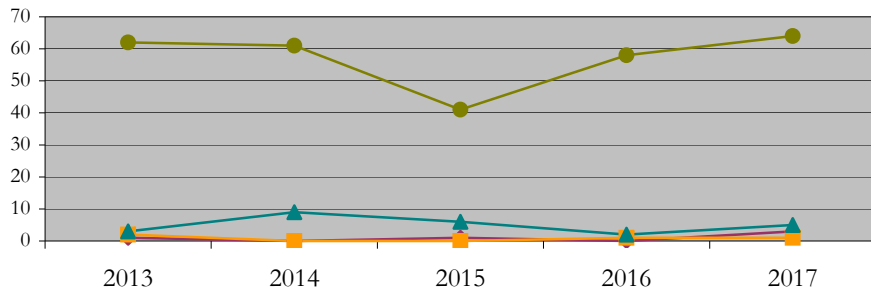
Chemical_Engineering_PHD [20FS0300PHD]

Fall 2013 through Fall 2017

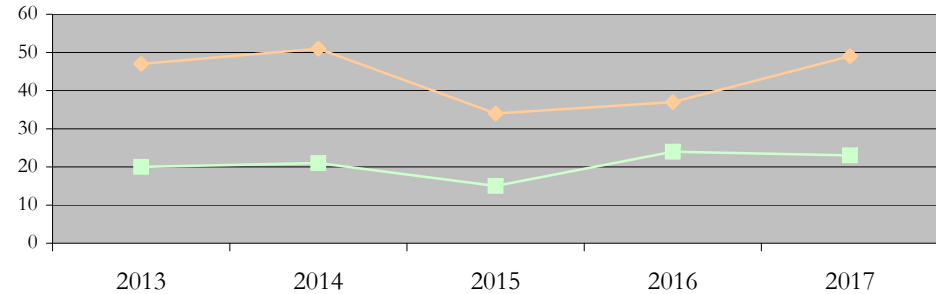
URM Total Asian White International

Male Female

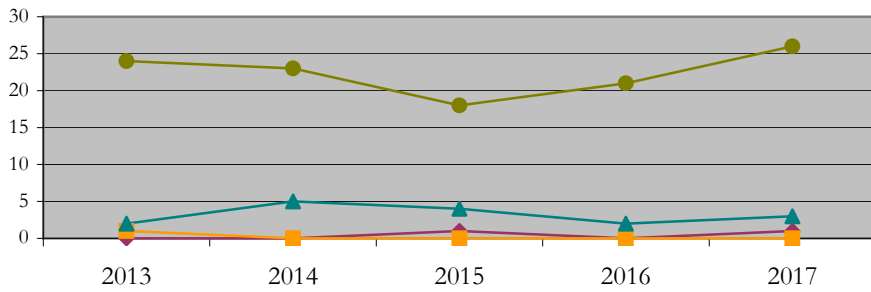
Applications by Race/Ethnicity



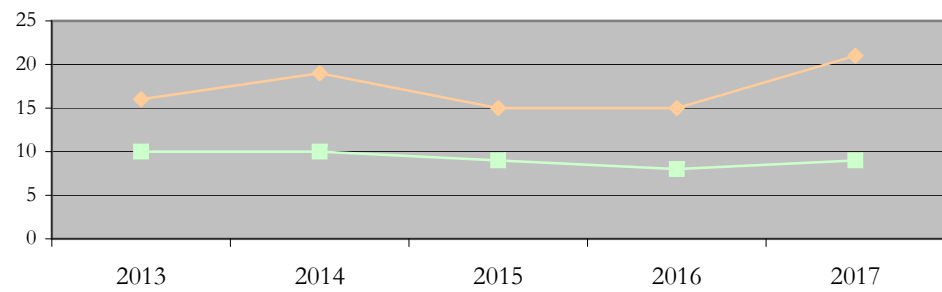
Applications by Gender



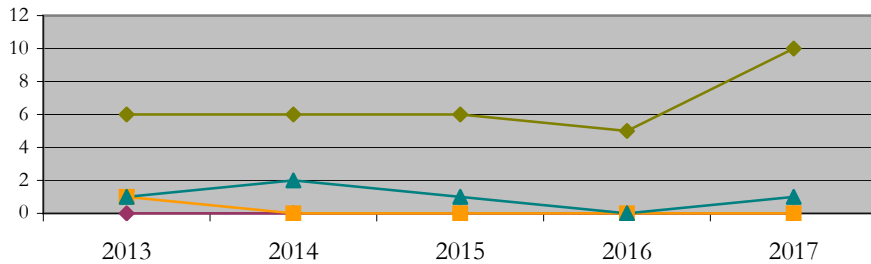
Admissions by Race/Ethnicity



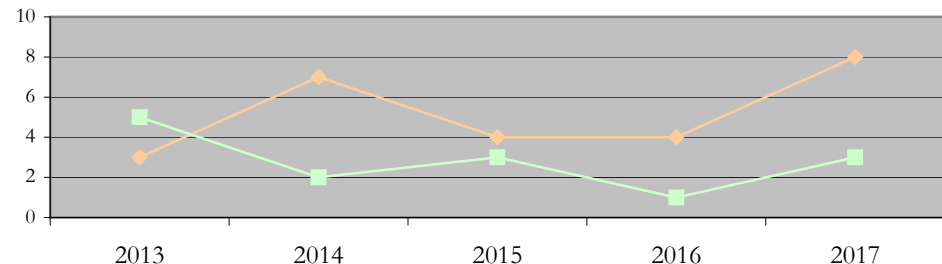
Admissions by Gender



New Enrollments by Race/Ethnicity



New Enrollments by Gender



Notes: 1) URM stands for Under-Represented Minority and includes American Indian or Alaska Native; Black or African-American; Hispanic / Latino race/ethnicity groups
2) Individual URM groups, Native Hawaiian Pacific Islander, Two or More Races, and Other race/ethnicity categories left off these charts due to relatively low numbers

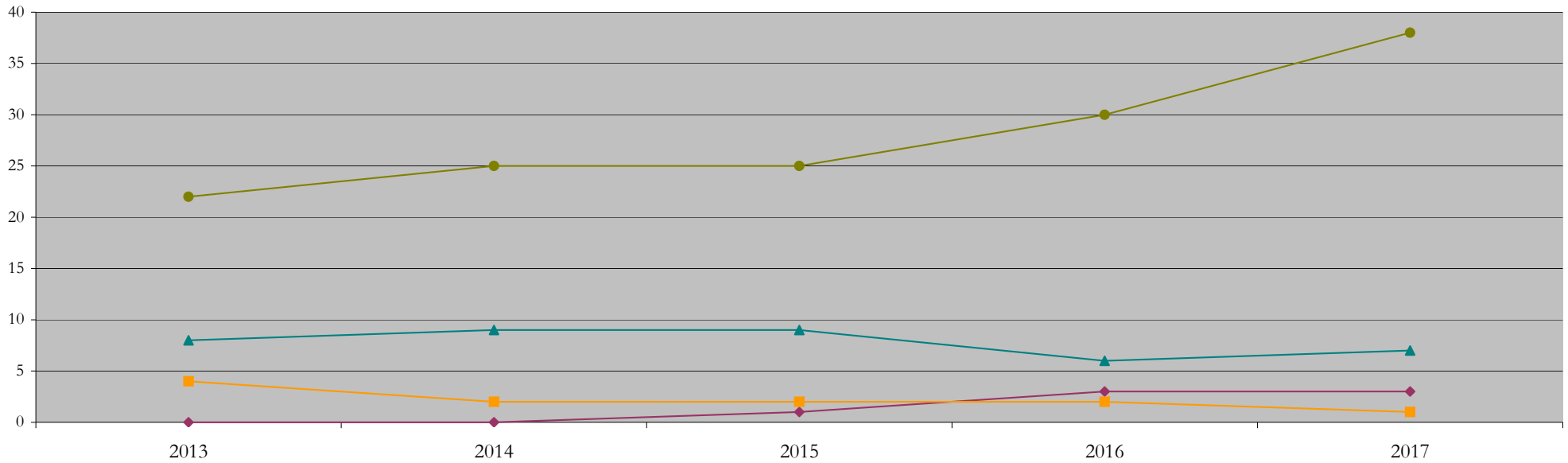
Total Enrollment (includes secondary curriculum)

by Race/Ethnicity

Chemical_Engineering_PHD [20FS0300PHD]

Fall 2013 through Fall 2017

Fall Semester Year	Total	Under Represented Minorities (URM)										Asian	Native Hawaiian or Pacific Islander	White	Two or More Races	International	Race/Eth Not Reported			
		American Indian or Alaska Native		Black or African American		Hispanic / Latino		URM Total												
		Count	%	Count	%	Count	%	Count	%											
2013	34	0	0.0	0	0.0	0	0.0	0	0.0	4	11.8	0	0.0	8	23.5	0	0.0	22	64.7	0
2014	37	0	0.0	0	0.0	0	0.0	0	0.0	2	5.4	0	0.0	9	24.3	0	0.0	25	67.6	1
2015	38	0	0.0	0	0.0	1	2.6	1	2.6	2	5.3	0	0.0	9	23.7	0	0.0	25	65.8	1
2016	41	0	0.0	1	2.4	2	4.9	3	7.3	2	4.9	0	0.0	6	14.6	0	0.0	30	73.2	0
2017	49	0	0.0	1	2.0	2	4.1	3	6.1	1	2.0	0	0.0	7	14.3	0	0.0	38	77.6	0



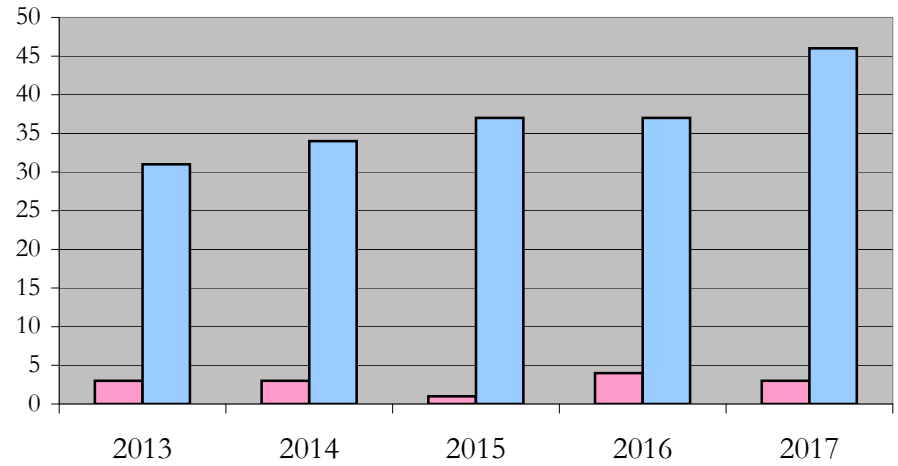
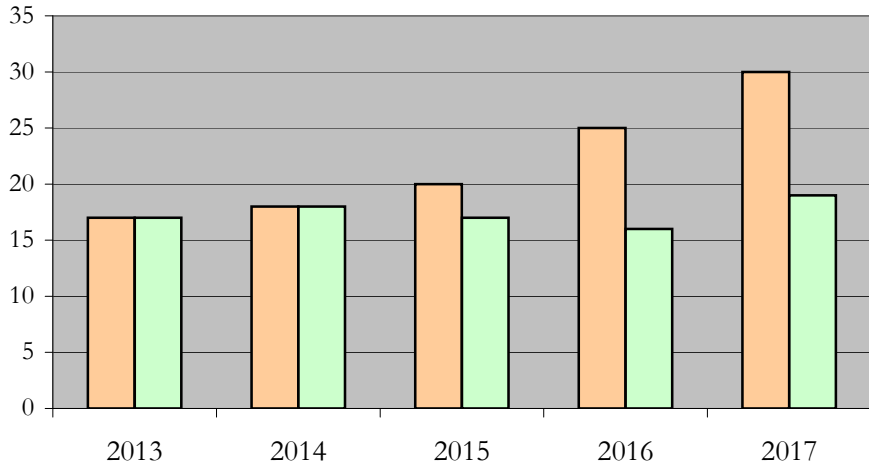
Notes: 1) URM stands for Under-Represented Minority and includes American Indian or Alaska Native; Black or African-American; Hispanic / Latino race/ethnicity groups
 2) Individual URM groups, Native Hawaiian Pacific Islander, Two or More Races, and Other race/ethnicity categories left off this chart due to relatively low numbers

**Total Enrollment (includes secondary curriculum)
by Student Type, Gender, and Enrollment Time**

Chemical_Engineering_PHD [20FS0300PHD]

Fall 2013 through Fall 2017

Fall Semester Year	Total	New		Continuing		Male		Female		Gender Not Reported	Part-time		Full-time	
		Count	%	Count	%	Count	%	Count	%	Count	Count	%	Count	%
2013	34	8	23.5	26	76.5	17	50.0	17	50.0	0	3	8.8	31	91.2
2014	37	9	24.3	28	75.7	18	48.6	18	48.6	1	3	8.1	34	91.9
2015	38	7	18.4	31	81.6	20	52.6	17	44.7	1	1	2.6	37	97.4
2016	41	5	12.2	36	87.8	25	61.0	16	39.0	0	4	9.8	37	90.2
2017	49	11	22.4	38	77.6	30	61.2	19	38.8	0	3	6.1	46	93.9



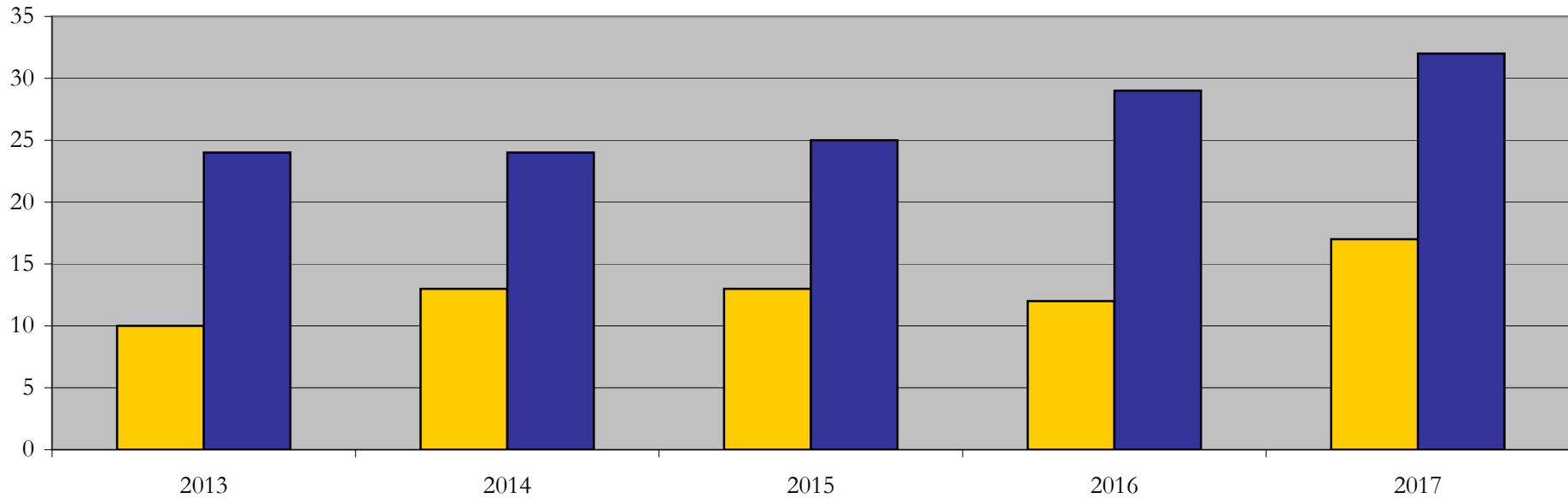
Enrollment & Degrees Conferred

by Primary/Secondary, Average Age, State Residency

Chemical_Engineering_PHD [20FS0300PHD]

Fall 2013 through Fall 2017

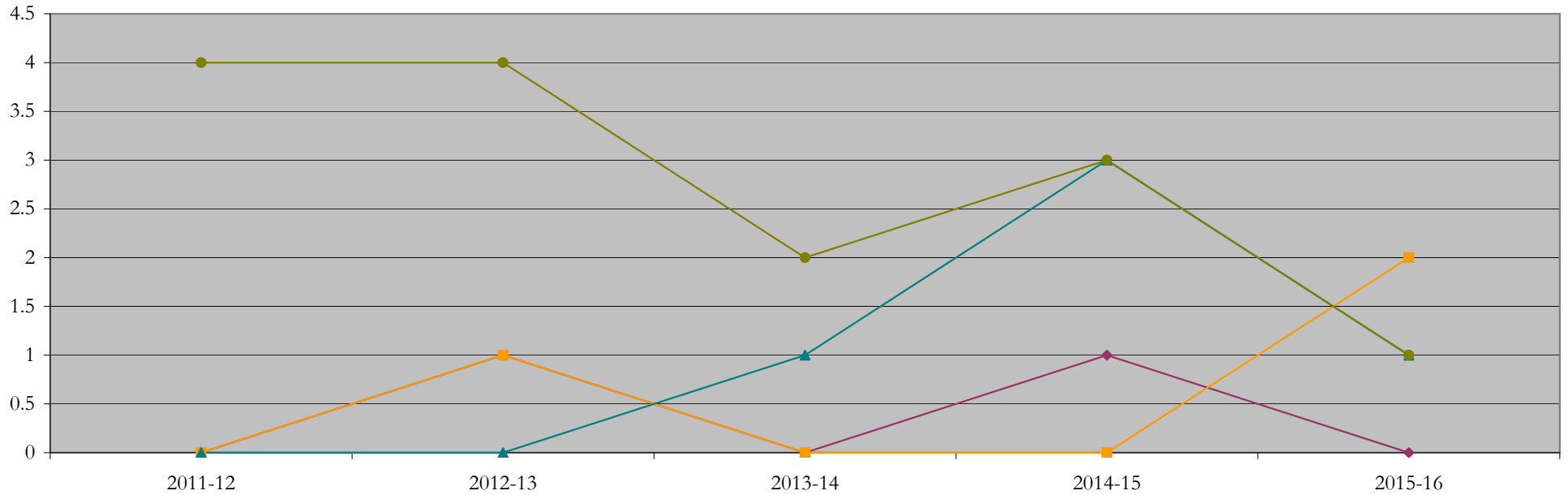
Fall Semester Year	Enrollment			Average Age			State Residency of Total Enrollment					
	Total	Primary	Secondary	Fall New Enrollment	Fall Continuing Enrollment	Academic Year Graduating Class	Residents			Non-Residents		
							Total Enrollment	New Enrollment	Continuing Enrollment	Total Enrollment	New Enrollment	Continuing Enrollment
2013	34	34	0	24	27	29	10	1	9	24	7	17
2014	37	37	0	26	29	27	13	3	10	24	6	18
2015	38	38	0	24	29	27	13	1	12	25	6	19
2016	41	41	0	25	28	31	12	1	11	29	4	25
2017	49	49	0	26	29	27	17	4	13	32	7	25



Degrees Conferred by Race/Ethnicity

Chemical_Engineering_PHD [20FS0300PHD]
AY2011-12 through 2015-16

Academic Year	Total	Under Represented Minorities (URM)								Asian		Native Hawaiian or Pacific		White		Two or More Races		International		Not Reported
		American Indian or Alaska Native		Black or African American		Hispanic / Latino		URM Total		Count	%	Count	%	Count	%	Count	%	Count	%	
		Count	%	Count	%	Count	%	Count	%											
2012 - 2013	4	0	0.0	0	0.0	0	0.0	0	0.0	0	0.0	0	0.0	0	0.0	0	0.0	4	100.0	0
2013 - 2014	6	0	0.0	0	0.0	1	16.7	1	16.7	1	16.7	0	0.0	0	0.0	0	0.0	4	66.7	0
2014 - 2015	3	0	0.0	0	0.0	0	0.0	0	0.0	0	0.0	0	0.0	1	33.3	0	0.0	2	66.7	0
2015 - 2016	7	0	0.0	1	14.3	0	0.0	1	14.3	0	0.0	0	0.0	3	42.9	0	0.0	3	42.9	0
2016 - 2017	4	0	0.0	0	0.0	0	0.0	0	0.0	2	50.0	0	0.0	1	25.0	0	0.0	1	25.0	0



Notes: 1) URM stands for Under-Represented Minority and includes American Indian or Alaska Native; Black or African-American; Hispanic / Latino race/ethnicity groups
2) Individual URM groups, Native Hawaiian Pacific Islander, Two or More Races, and Other race/ethnicity categories left off this chart due to relatively low numbers

Degrees Conferred

by Gender

Chemical_Engineering_PHD [20FS0300PHD]

AY2011-12 through 2015-16

Academic Year	Total	Male		Female		Not Reported
		Count	%	Count	%	
2012 - 2013	4	2	50.0	2	50.0	0
2013 - 2014	6	3	50.0	3	50.0	0
2014 - 2015	3	2	66.7	1	33.3	0
2015 - 2016	7	2	28.6	5	71.4	0
2016 - 2017	4	2	50.0	2	50.0	0

