

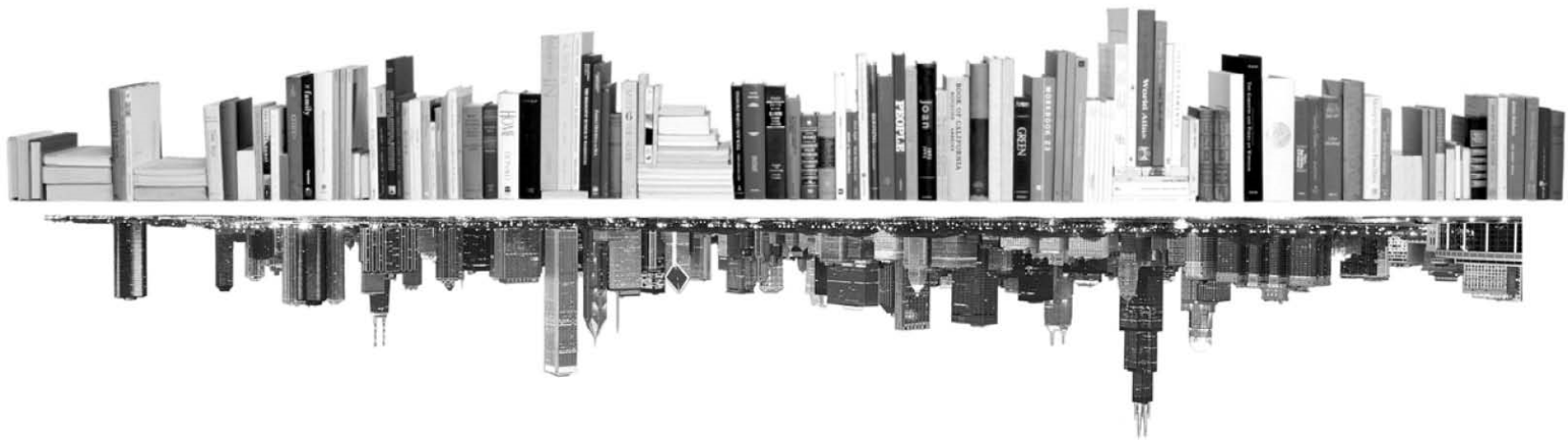
**GRADUATE  
COLLEGE**



---

**ENROLLMENT MANAGEMENT REPORT  
COLLEGE PROFILE  
EDUCATION  
FALL 2017**

---





---

---

## INTRODUCTION – COLLEGE PROFILE

---

---

The following college profile has been developed to tailor our annual enrollment report to your college’s data.

The college profile report tracks students, not enrollments. This means that students with dual enrollments are reported only once – under their first program.

Kevin Monahan  
Director of Graduate Program Review and Information Systems  
Graduate College, University of Illinois at Chicago  
Voice: 312.413.0410 Email: kmonahan@uic.edu

---

---

## TABLE OF CONTENTS

---

---

MATRICULATION	
Diversity Pipeline	1
APPLICATIONS	
by Race/Ethnicity	2 – 5
ENROLLMENT	
by Race/Ethnicity	6 – 9
by Type, Time, & Gender	10 – 13
DEGREES	
by Race/Ethnicity	14 – 15
by Gender	16 – 17
List of academic programs included in this report	Appendix A

# Matriculation

## Diversity Pipeline

College of Education

Fall 2013 - Fall 2017

	Fall Semester Year	Applied					Admitted					Non-URM Admitted to Applied Yield %	URM Admitted to Applied Yield %	New Enrollment					Non-URM Enrolled to Admitted Yield %	URM Enrolled to Admitted Yield %	Total Enrollment				
		Grand Total	Non-URM Total		URM Total		Grand Total	Non-URM Total		URM Total				Grand Total	Non-URM Total		URM Total				Grand Total	Non-URM Total		URM Total	
			Count	%	Count	%		Count	%	Count	%				Count	%	Count	%				Count	%	Count	%
All	2013	458	321	70.1%	137	29.9%	254	178	70.1%	76	29.9%	55.5%	55.5%	211	143	67.8%	68	32.2%	80.3%	89.5%	735	492	66.9%	243	33.1%
	2014	387	270	69.8%	117	30.2%	228	161	70.6%	67	29.4%	59.6%	57.3%	129	89	69.0%	40	31.0%	55.3%	59.7%	767	524	68.3%	243	31.7%
	2015	377	258	68.4%	119	31.6%	199	138	69.3%	61	30.7%	53.5%	51.3%	128	93	72.7%	35	27.3%	67.4%	57.4%	718	488	68.0%	230	32.0%
	2016	351	223	63.5%	128	36.5%	179	114	63.7%	65	36.3%	51.1%	50.8%	124	71	57.3%	53	42.7%	62.3%	81.5%	696	457	65.7%	239	34.3%
	2017	341	213	62.5%	128	37.5%	194	124	63.9%	70	36.1%	58.2%	54.7%	115	62	53.9%	53	46.1%	50.0%	75.7%	618	387	62.6%	231	37.4%
	<b>Average</b>	<b>383</b>	<b>257</b>	<b>67.1%</b>	<b>126</b>	<b>32.9%</b>	<b>211</b>	<b>143</b>	<b>67.8%</b>	<b>68</b>	<b>32.2%</b>	<b>55.6%</b>	<b>53.9%</b>	<b>141</b>	<b>92</b>	<b>64.8%</b>	<b>50</b>	<b>35.2%</b>	<b>64.1%</b>	<b>73.5%</b>	<b>707</b>	<b>470</b>	<b>66.4%</b>	<b>237</b>	<b>33.6%</b>
Masters & IBHE Certificate	2013	269	175	65.1%	94	34.9%	177	119	67.2%	58	32.8%	68.0%	61.7%	160	108	67.5%	52	32.5%	90.8%	89.7%	400	278	69.5%	122	30.5%
	2014	199	137	68.8%	62	31.2%	125	85	68.0%	40	32.0%	62.0%	64.5%	74	49	66.2%	25	33.8%	57.6%	62.5%	398	281	70.6%	117	29.4%
	2015	205	140	68.3%	65	31.7%	123	87	70.7%	36	29.3%	62.1%	55.4%	81	58	71.6%	23	28.4%	66.7%	63.9%	355	245	69.0%	110	31.0%
	2016	192	120	62.5%	72	37.5%	119	71	59.7%	48	40.3%	59.2%	66.7%	90	48	53.3%	42	46.7%	67.6%	87.5%	358	237	66.2%	121	33.8%
	2017	185	110	59.5%	75	40.5%	115	70	60.9%	45	39.1%	63.6%	60.0%	70	37	52.9%	33	47.1%	52.9%	73.3%	298	187	62.8%	111	37.2%
	<b>Average</b>	<b>210</b>	<b>136</b>	<b>65.0%</b>	<b>74</b>	<b>35.0%</b>	<b>132</b>	<b>86</b>	<b>65.6%</b>	<b>45</b>	<b>34.4%</b>	<b>63.3%</b>	<b>61.7%</b>	<b>95</b>	<b>60</b>	<b>63.2%</b>	<b>35</b>	<b>36.8%</b>	<b>69.4%</b>	<b>77.1%</b>	<b>362</b>	<b>246</b>	<b>67.9%</b>	<b>116</b>	<b>32.1%</b>
Doctorate	2013	153	120	78.4%	33	21.6%	49	39	79.6%	10	20.4%	32.5%	30.3%	32	23	71.9%	9	28.1%	59.0%	90.0%	303	190	62.7%	113	37.3%
	2014	155	106	68.4%	49	31.6%	73	52	71.2%	21	28.8%	49.1%	42.9%	36	24	66.7%	12	33.3%	46.2%	57.1%	328	209	63.7%	119	36.3%
	2015	155	104	67.1%	51	32.9%	62	40	64.5%	22	35.5%	38.5%	43.1%	31	21	67.7%	10	32.3%	52.5%	45.5%	322	206	64.0%	116	36.0%
	2016	138	88	63.8%	50	36.2%	42	31	73.8%	11	26.2%	35.2%	22.0%	21	14	66.7%	7	33.3%	45.2%	63.6%	303	191	63.0%	112	37.0%
	2017	128	82	64.1%	46	35.9%	59	39	66.1%	20	33.9%	47.6%	43.5%	31	14	45.2%	17	54.8%	35.9%	85.0%	286	171	59.8%	115	40.2%
	<b>Average</b>	<b>146</b>	<b>100</b>	<b>68.6%</b>	<b>46</b>	<b>31.4%</b>	<b>57</b>	<b>40</b>	<b>70.5%</b>	<b>17</b>	<b>29.5%</b>	<b>40.2%</b>	<b>36.7%</b>	<b>30</b>	<b>19</b>	<b>63.6%</b>	<b>11</b>	<b>36.4%</b>	<b>47.8%</b>	<b>65.5%</b>	<b>308</b>	<b>193</b>	<b>62.7%</b>	<b>115</b>	<b>37.3%</b>
Non-Degree & Campus Certificate	2013	36	26	72.2%	10	27.8%	28	20	71.4%	8	28.6%	76.9%	80.0%	19	12	63.2%	7	36.8%	60.0%	87.5%	32	24	75.0%	8	25.0%
	2014	33	27	81.8%	6	18.2%	30	24	80.0%	6	20.0%	88.9%	100.0%	19	16	84.2%	3	15.8%	66.7%	50.0%	41	34	82.9%	7	17.1%
	2015	17	14	82.4%	3	17.6%	14	11	78.6%	3	21.4%	78.6%	100.0%	16	14	87.5%	2	12.5%	127.3%	66.7%	41	37	90.2%	4	9.8%
	2016	21	15	71.4%	6	28.6%	18	12	66.7%	6	33.3%	80.0%	100.0%	13	9	69.2%	4	30.8%	75.0%	66.7%	35	29	82.9%	6	17.1%
	2017	28	21	75.0%	7	25.0%	20	15	75.0%	5	25.0%	71.4%	71.4%	14	11	78.6%	3	21.4%	73.3%	60.0%	34	29	85.3%	5	14.7%
	<b>Average</b>	<b>27</b>	<b>21</b>	<b>76.3%</b>	<b>6</b>	<b>23.7%</b>	<b>22</b>	<b>16</b>	<b>74.5%</b>	<b>6</b>	<b>25.5%</b>	<b>79.6%</b>	<b>87.5%</b>	<b>16</b>	<b>12</b>	<b>76.5%</b>	<b>4</b>	<b>23.5%</b>	<b>75.6%</b>	<b>67.9%</b>	<b>37</b>	<b>31</b>	<b>83.6%</b>	<b>6</b>	<b>16.4%</b>

**Note:** URM stands for Under-Represented Minority and includes American Indian or Alaska Native; Black or African-American; Hispanic / Latino race/ethnicity groups

# Applications - Total

## by Race/Ethnicity

College of Education

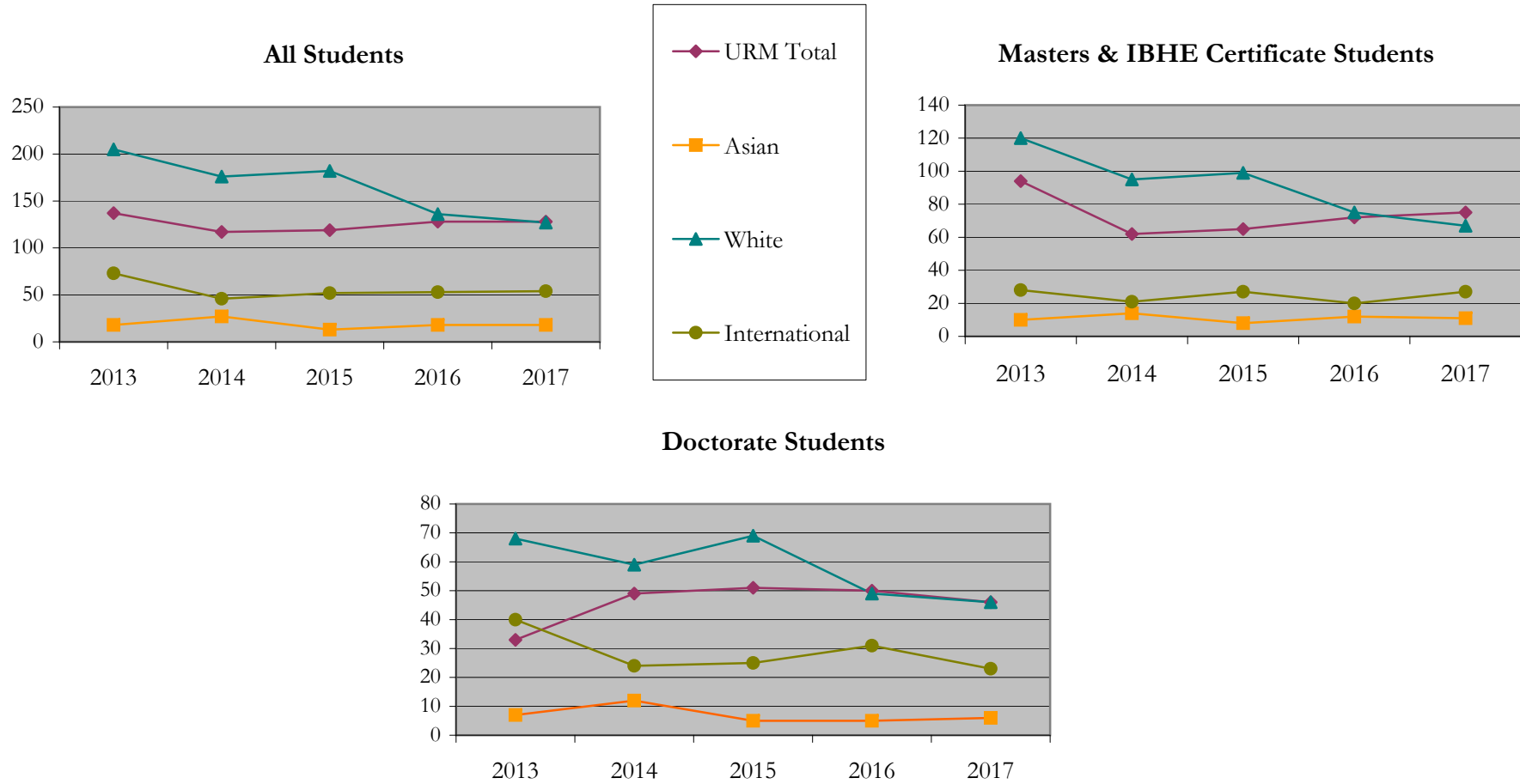
Fall 2013 - Fall 2017

		Total	Under Represented Minorities (URM)																		
			American Indian or Alaska Native		Black or African American		Hispanic / Latino		URM Total		Asian		Native Hawaiian or Pacific Islander		White		Two or More Races		International		Not Reported
			Count	%	Count	%	Count	%	Count	%	Count	%	Count	%	Count	%	Count	%	Count	%	Count
All	2013	458	0	0.0	75	16.4	62	13.5	137	29.9	18	3.9	1	0.2	205	44.8	9	2.0	73	15.9	15
	2014	387	1	0.3	63	16.3	53	13.7	117	30.2	27	7.0	0	0.0	176	45.5	15	3.9	46	11.9	6
	2015	377	0	0.0	75	19.9	44	11.7	119	31.6	13	3.4	0	0.0	182	48.3	3	0.8	52	13.8	8
	2016	351	1	0.3	71	20.2	56	16.0	128	36.5	18	5.1	0	0.0	136	38.7	6	1.7	53	15.1	10
	2017	341	1	0.3	73	21.4	54	15.8	128	37.5	18	5.3	0	0.0	127	37.2	7	2.1	54	15.8	7
Masters & IBHE Certificate	2013	269	0	0.0	49	18.2	45	16.7	94	34.9	10	3.7	0	0.0	120	44.6	6	2.2	28	10.4	11
	2014	199	1	0.5	32	16.1	29	14.6	62	31.2	14	7.0	0	0.0	95	47.7	6	3.0	21	10.6	1
	2015	205	0	0.0	36	17.6	29	14.1	65	31.7	8	3.9	0	0.0	99	48.3	1	0.5	27	13.2	5
	2016	192	0	0.0	32	16.7	40	20.8	72	37.5	12	6.3	0	0.0	75	39.1	5	2.6	20	10.4	8
	2017	185	0	0.0	43	23.2	32	17.3	75	40.5	11	5.9	0	0.0	67	36.2	2	1.1	27	14.6	3
Doctorate	2013	153	0	0.0	20	13.1	13	8.5	33	21.6	7	4.6	1	0.7	68	44.4	2	1.3	40	26.1	2
	2014	155	0	0.0	29	18.7	20	12.9	49	31.6	12	7.7	0	0.0	59	38.1	9	5.8	24	15.5	2
	2015	155	0	0.0	38	24.5	13	8.4	51	32.9	5	3.2	0	0.0	69	44.5	2	1.3	25	16.1	3
	2016	138	1	0.7	35	25.4	14	10.1	50	36.2	5	3.6	0	0.0	49	35.5	1	0.7	31	22.5	2
	2017	128	0	0.0	26	20.3	20	15.6	46	35.9	6	4.7	0	0.0	46	35.9	4	3.1	23	18.0	3
Non-Degree & Campus Certificate	2013	36	0	0.0	6	16.7	4	11.1	10	27.8	1	2.8	0	0.0	17	47.2	1	2.8	5	13.9	2
	2014	33	0	0.0	2	6.1	4	12.1	6	18.2	1	3.0	0	0.0	22	66.7	0	0.0	1	3.0	3
	2015	17	0	0.0	1	5.9	2	11.8	3	17.6	0	0.0	0	0.0	14	82.4	0	0.0	0	0.0	0
	2016	21	0	0.0	4	19.0	2	9.5	6	28.6	1	4.8	0	0.0	12	57.1	0	0.0	2	9.5	0
	2017	28	1	3.6	4	14.3	2	7.1	7	25.0	1	3.6	0	0.0	14	50.0	1	3.6	4	14.3	1

**Note:** URM stands for Under-Represented Minority and includes American Indian or Alaska Native; Black or African-American; Hispanic / Latino race/ethnicity groups

# Applications - Total by Race/Ethnicity

College of Education  
Fall 2013 - Fall 2017



**Notes:** 1) URM stands for Under-Represented Minority and includes American Indian or Alaska Native; Black or African-American; Hispanic / Latino race/ethnicity groups  
 2) Individual URM groups, Native Hawaiian Pacific Islander, Two or More Races, and Other race/ethnicity categories left off this charts due to relatively low numbers

# Applications - Admitted

## by Race/Ethnicity

College of Education

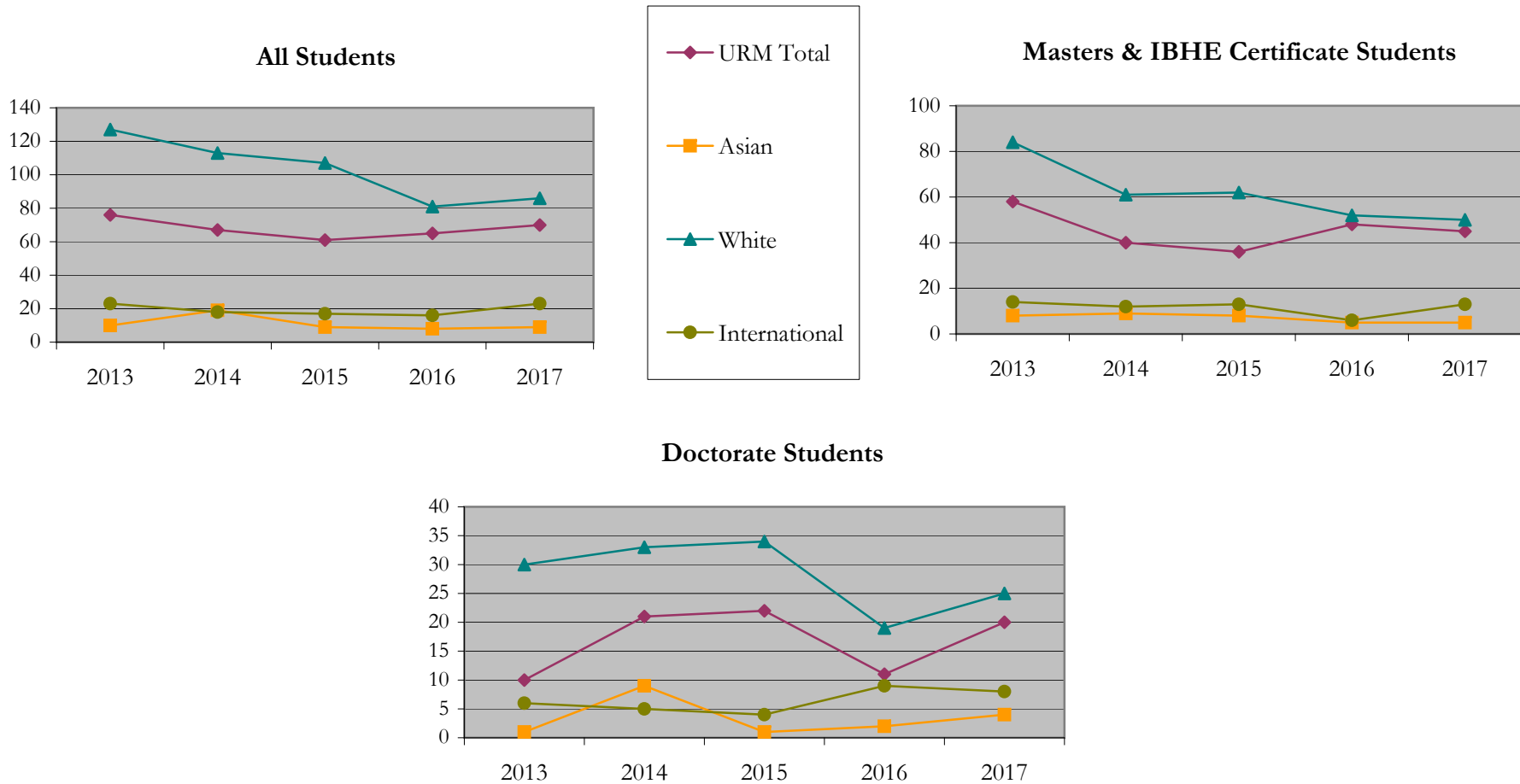
Fall 2013 - Fall 2017

		Total	Under Represented Minorities (URM)										Asian		Native Hawaiian or Pacific Islander		White		Two or More Races		International		Not Reported
			American Indian or Alaska Native		Black or African American		Hispanic / Latino		URM Total		Count	%	Count	%	Count	%	Count	%	Count	%	Count	%	
			Count	%	Count	%	Count	%	Count	%													
All	2013	254	0	0.0	38	15.0	38	15.0	76	29.9	10	3.9	0	0.0	127	50.0	7	2.8	23	9.1	11		
	2014	228	0	0.0	33	14.5	34	14.9	67	29.4	19	8.3	0	0.0	113	49.6	7	3.1	18	7.9	4		
	2015	199	0	0.0	31	15.6	30	15.1	61	30.7	9	4.5	0	0.0	107	53.8	1	0.5	17	8.5	4		
	2016	179	0	0.0	30	16.8	35	19.6	65	36.3	8	4.5	0	0.0	81	45.3	5	2.8	16	8.9	4		
	2017	194	0	0.0	36	18.6	34	17.5	70	36.1	9	4.6	0	0.0	86	44.3	2	1.0	23	11.9	4		
Masters & IBHE Certificate	2013	177	0	0.0	30	16.9	28	15.8	58	32.8	8	4.5	0	0.0	84	47.5	4	2.3	14	7.9	9		
	2014	125	0	0.0	21	16.8	19	15.2	40	32.0	9	7.2	0	0.0	61	48.8	3	2.4	12	9.6	0		
	2015	123	0	0.0	16	13.0	20	16.3	36	29.3	8	6.5	0	0.0	62	50.4	1	0.8	13	10.6	3		
	2016	119	0	0.0	20	16.8	28	23.5	48	40.3	5	4.2	0	0.0	52	43.7	4	3.4	6	5.0	4		
	2017	115	0	0.0	22	19.1	23	20.0	45	39.1	5	4.3	0	0.0	50	43.5	0	0.0	13	11.3	2		
Doctorate	2013	49	0	0.0	4	8.2	6	12.2	10	20.4	1	2.0	0	0.0	30	61.2	2	4.1	6	12.2	0		
	2014	73	0	0.0	10	13.7	11	15.1	21	28.8	9	12.3	0	0.0	33	45.2	4	5.5	5	6.8	1		
	2015	62	0	0.0	14	22.6	8	12.9	22	35.5	1	1.6	0	0.0	34	54.8	0	0.0	4	6.5	1		
	2016	42	0	0.0	6	14.3	5	11.9	11	26.2	2	4.8	0	0.0	19	45.2	1	2.4	9	21.4	0		
	2017	59	0	0.0	11	18.6	9	15.3	20	33.9	4	6.8	0	0.0	25	42.4	1	1.7	8	13.6	1		
Non-Degree & Campus Certificate	2013	28	0	0.0	4	14.3	4	14.3	8	28.6	1	3.6	0	0.0	13	46.4	1	3.6	3	10.7	2		
	2014	30	0	0.0	2	6.7	4	13.3	6	20.0	1	3.3	0	0.0	19	63.3	0	0.0	1	3.3	3		
	2015	14	0	0.0	1	7.1	2	14.3	3	21.4	0	0.0	0	0.0	11	78.6	0	0.0	0	0.0	0		
	2016	18	0	0.0	4	22.2	2	11.1	6	33.3	1	5.6	0	0.0	10	55.6	0	0.0	1	5.6	0		
	2017	20	0	0.0	3	15.0	2	10.0	5	25.0	0	0.0	0	0.0	11	55.0	1	5.0	2	10.0	1		

**Note:** URM stands for Under-Represented Minority and includes American Indian or Alaska Native; Black or African-American; Hispanic / Latino race/ethnicity groups

# Applications - Admitted by Race/Ethnicity

College of Education  
Fall 2013 - Fall 2017



**Notes:** 1) URM stands for Under-Represented Minority and includes American Indian or Alaska Native; Black or African-American; Hispanic / Latino race/ethnicity groups

2) Individual URM groups, Native Hawaiian Pacific Islander, Two or More Races, and Other race/ethnicity categories left off this charts due to relatively low numbers

**Enrollment - New  
by Race/Ethnicity**

College of Education  
Fall 2013 - Fall 2017

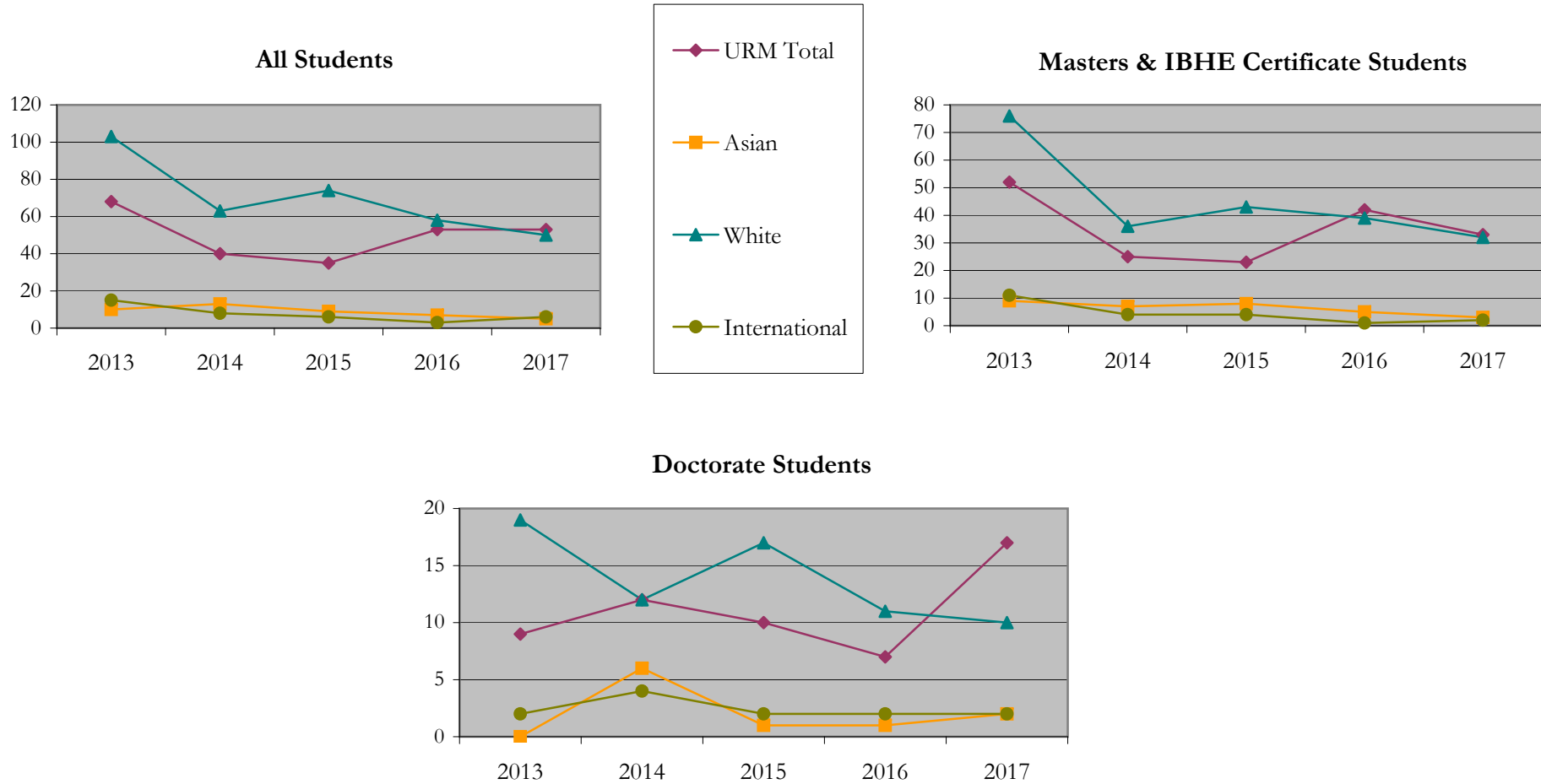
		Total	Under Represented Minorities (URM)										Asian		Native Hawaiian or Pacific Islander		White		Two or More Races		International		Not Reported
			American Indian or Alaska Native		Black or African American		Hispanic / Latino		URM Total		Count	%	Count	%	Count	%	Count	%	Count	%	Count		
			Count	%	Count	%	Count	%	Count	%												Count	%
All	2013	211	0	0.0	32	15.2	36	17.1	68	32.2	10	4.7	0	0.0	103	48.8	5	2.4	15	7.1	10		
	2014	129	0	0.0	20	15.5	20	15.5	40	31.0	13	10.1	0	0.0	63	48.8	4	3.1	8	6.2	1		
	2015	128	0	0.0	14	10.9	21	16.4	35	27.3	9	7.0	0	0.0	74	57.8	0	0.0	6	4.7	4		
	2016	124	0	0.0	23	18.5	30	24.2	53	42.7	7	5.6	0	0.0	58	46.8	2	1.6	3	2.4	1		
	2017	115	0	0.0	26	22.6	27	23.5	53	46.1	5	4.3	0	0.0	50	43.5	0	0.0	6	5.2	1		
Masters & IBHE Certificate	2013	160	0	0.0	25	15.6	27	16.9	52	32.5	9	5.6	0	0.0	76	47.5	3	1.9	11	6.9	9		
	2014	74	0	0.0	14	18.9	11	14.9	25	33.8	7	9.5	0	0.0	36	48.6	2	2.7	4	5.4	0		
	2015	81	0	0.0	9	11.1	14	17.3	23	28.4	8	9.9	0	0.0	43	53.1	0	0.0	4	4.9	3		
	2016	90	0	0.0	17	18.9	25	27.8	42	46.7	5	5.6	0	0.0	39	43.3	2	2.2	1	1.1	1		
	2017	70	0	0.0	16	22.9	17	24.3	33	47.1	3	4.3	0	0.0	32	45.7	0	0.0	2	2.9	0		
Doctorate	2013	32	0	0.0	4	12.5	5	15.6	9	28.1	0	0.0	0	0.0	19	59.4	2	6.3	2	6.3	0		
	2014	36	0	0.0	6	16.7	6	16.7	12	33.3	6	16.7	0	0.0	12	33.3	2	5.6	4	11.1	0		
	2015	31	0	0.0	5	16.1	5	16.1	10	32.3	1	3.2	0	0.0	17	54.8	0	0.0	2	6.5	1		
	2016	21	0	0.0	4	19.0	3	14.3	7	33.3	1	4.8	0	0.0	11	52.4	0	0.0	2	9.5	0		
	2017	31	0	0.0	9	29.0	8	25.8	17	54.8	2	6.5	0	0.0	10	32.3	0	0.0	2	6.5	0		
Non-Degree & Campus Certificate	2013	19	0	0.0	3	15.8	4	21.1	7	36.8	1	5.3	0	0.0	8	42.1	0	0.0	2	10.5	1		
	2014	19	0	0.0	0	0.0	3	15.8	3	15.8	0	0.0	0	0.0	15	78.9	0	0.0	0	0.0	1		
	2015	16	0	0.0	0	0.0	2	12.5	2	12.5	0	0.0	0	0.0	14	87.5	0	0.0	0	0.0	0		
	2016	13	0	0.0	2	15.4	2	15.4	4	30.8	1	7.7	0	0.0	8	61.5	0	0.0	0	0.0	0		
	2017	14	0	0.0	1	7.1	2	14.3	3	21.4	0	0.0	0	0.0	8	57.1	0	0.0	2	14.3	1		

**Note:** URM stands for Under-Represented Minority and includes American Indian or Alaska Native; Black or African-American; Hispanic / Latino race/ethnicity groups



# Enrollment - New by Race/Ethnicity

College of Education  
Fall 2013 - Fall 2017



**Notes:** 1) URM stands for Under-Represented Minority and includes American Indian or Alaska Native; Black or African-American; Hispanic / Latino race/ethnicity groups  
 2) Individual URM groups, Native Hawaiian Pacific Islander, Two or More Races, and Other race/ethnicity categories left off this charts due to relatively low numbers

**Enrollment - Total  
by Race/Ethnicity**

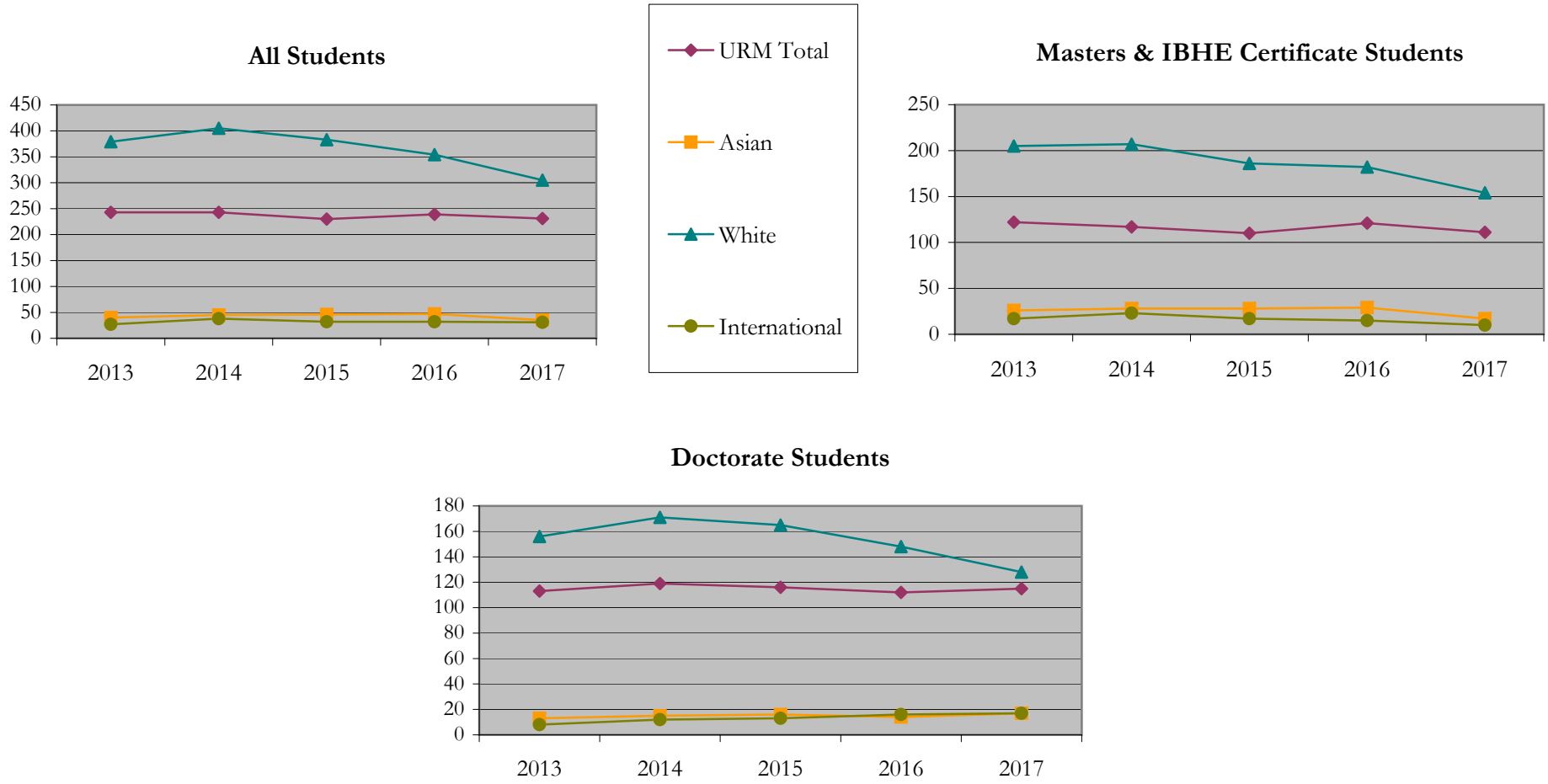
College of Education  
Fall 2013 - Fall 2017

		Total	Under Represented Minorities (URM)										Asian		Native Hawaiian or Pacific Islander		White		Two or More Races		International		Not Reported
			American Indian or Alaska Native		Black or African American		Hispanic / Latino		URM Total		Count	%	Count	%	Count	%	Count	%	Count	%	Count	%	
			Count	%	Count	%	Count	%	Count	%													Count
All	2013	735	0	0.0	131	17.8	112	15.2	243	33.1	40	5.4	2	0.3	379	51.6	13	1.8	27	3.7	31		
	2014	767	0	0.0	131	17.1	112	14.6	243	31.7	45	5.9	1	0.1	405	52.8	13	1.7	38	5.0	22		
	2015	718	0	0.0	118	16.4	112	15.6	230	32.0	46	6.4	1	0.1	383	53.3	13	1.8	32	4.5	13		
	2016	696	0	0.0	128	18.4	111	15.9	239	34.3	47	6.8	1	0.1	354	50.9	13	1.9	32	4.6	10		
	2017	618	0	0.0	126	20.4	105	17.0	231	37.4	35	5.7	1	0.2	305	49.4	8	1.3	31	5.0	7		
Masters & IBHE Certificate	2013	400	0	0.0	56	14.0	66	16.5	122	30.5	26	6.5	1	0.3	205	51.3	7	1.8	17	4.3	22		
	2014	398	0	0.0	55	13.8	62	15.6	117	29.4	28	7.0	1	0.3	207	52.0	7	1.8	23	5.8	15		
	2015	355	0	0.0	47	13.2	63	17.7	110	31.0	28	7.9	1	0.3	186	52.4	6	1.7	17	4.8	7		
	2016	358	0	0.0	53	14.8	68	19.0	121	33.8	29	8.1	1	0.3	182	50.8	7	2.0	15	4.2	3		
	2017	298	0	0.0	54	18.1	57	19.1	111	37.2	17	5.7	1	0.3	154	51.7	3	1.0	10	3.4	2		
Doctorate	2013	303	0	0.0	71	23.4	42	13.9	113	37.3	13	4.3	0	0.0	156	51.5	6	2.0	8	2.6	7		
	2014	328	0	0.0	75	22.9	44	13.4	119	36.3	15	4.6	0	0.0	171	52.1	6	1.8	12	3.7	5		
	2015	322	0	0.0	70	21.7	46	14.3	116	36.0	16	5.0	0	0.0	165	51.2	7	2.2	13	4.0	5		
	2016	303	0	0.0	71	23.4	41	13.5	112	37.0	14	4.6	0	0.0	148	48.8	6	2.0	16	5.3	7		
	2017	286	0	0.0	70	24.5	45	15.7	115	40.2	17	5.9	0	0.0	128	44.8	5	1.7	17	5.9	4		
Non-Degree & Campus Certificate	2013	32	0	0.0	4	12.5	4	12.5	8	25.0	1	3.1	1	3.1	18	56.3	0	0.0	2	6.3	2		
	2014	41	0	0.0	1	2.4	6	14.6	7	17.1	2	4.9	0	0.0	27	65.9	0	0.0	3	7.3	2		
	2015	41	0	0.0	1	2.4	3	7.3	4	9.8	2	4.9	0	0.0	32	78.0	0	0.0	2	4.9	1		
	2016	35	0	0.0	4	11.4	2	5.7	6	17.1	4	11.4	0	0.0	24	68.6	0	0.0	1	2.9	0		
	2017	34	0	0.0	2	5.9	3	8.8	5	14.7	1	2.9	0	0.0	23	67.6	0	0.0	4	11.8	1		

**Note:** URM stands for Under-Represented Minority and includes American Indian or Alaska Native; Black or African-American; Hispanic / Latino race/ethnicity groups

# Enrollment - Total by Race/Ethnicity

College of Education  
Fall 2013 - Fall 2017



**Notes:** 1) URM stands for Under-Represented Minority and includes American Indian or Alaska Native; Black or African-American; Hispanic / Latino race/ethnicity groups  
 2) Individual URM groups, Native Hawaiian Pacific Islander, Two or More Races, and Other race/ethnicity categories left off this charts due to relatively low numbers

## Enrollment

### by Student Type, Enrollment Time, and Gender

College of Education

Fall 2013 - Fall 2017

		Total	New		Continuing		Male		Female		Gender Not Reported	Part-time		Full-time	
			Count	%	Count	%	Count	%	Count	%		Count	%	Count	%
All	2013	735	211	28.7	524	71.3	193	26.3	542	73.7	0	464	63.1	271	36.9
	2014	767	129	16.8	638	83.2	193	25.2	571	74.4	3	486	63.4	281	36.6
	2015	718	128	17.8	590	82.2	194	27.0	520	72.4	4	436	60.7	282	39.3
	2016	696	124	17.8	572	82.2	192	27.6	502	72.1	2	414	59.5	282	40.5
	2017	618	115	18.6	503	81.4	189	30.6	425	68.8	4	363	58.7	255	41.3
Masters & IBHE Certificate	2013	400	160	40.0	240	60.0	94	23.5	306	76.5	0	232	58.0	168	42.0
	2014	398	74	18.6	324	81.4	95	23.9	301	75.6	2	226	56.8	172	43.2
	2015	355	81	22.8	274	77.2	92	25.9	260	73.2	3	193	54.4	162	45.6
	2016	358	90	25.1	268	74.9	93	26.0	263	73.5	2	193	53.9	165	46.1
	2017	298	70	23.5	228	76.5	88	29.5	209	70.1	1	164	55.0	134	45.0
Doctorate	2013	303	32	10.6	271	89.4	89	29.4	214	70.6	0	203	67.0	100	33.0
	2014	328	36	11.0	292	89.0	86	26.2	242	73.8	0	223	68.0	105	32.0
	2015	322	31	9.6	291	90.4	89	27.6	233	72.4	0	205	63.7	117	36.3
	2016	303	21	6.9	282	93.1	91	30.0	212	70.0	0	190	62.7	113	37.3
	2017	286	31	10.8	255	89.2	87	30.4	199	69.6	0	173	60.5	113	39.5
Non-Degree & Campus Certificate	2013	32	19	59.4	13	40.6	10	31.3	22	68.8	0	29	90.6	3	9.4
	2014	41	19	46.3	22	53.7	12	29.3	28	68.3	1	37	90.2	4	9.8
	2015	41	16	39.0	25	61.0	13	31.7	27	65.9	1	38	92.7	3	7.3
	2016	35	13	37.1	22	62.9	8	22.9	27	77.1	0	31	88.6	4	11.4
	2017	34	14	41.2	20	58.8	14	41.2	17	50.0	3	26	76.5	8	23.5

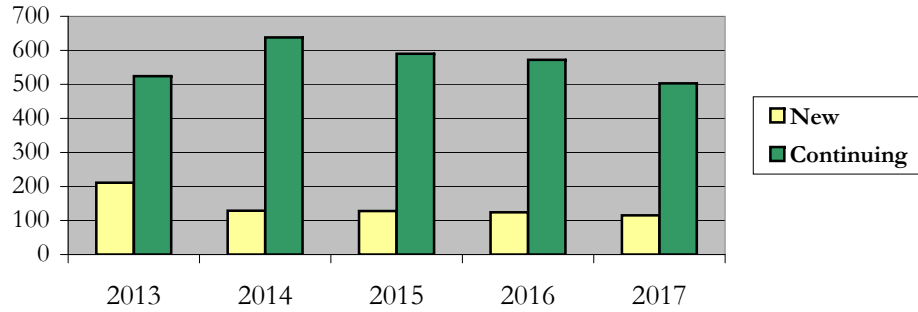
# Enrollment

## by Student Type, Enrollment Time, and Gender (All Students)

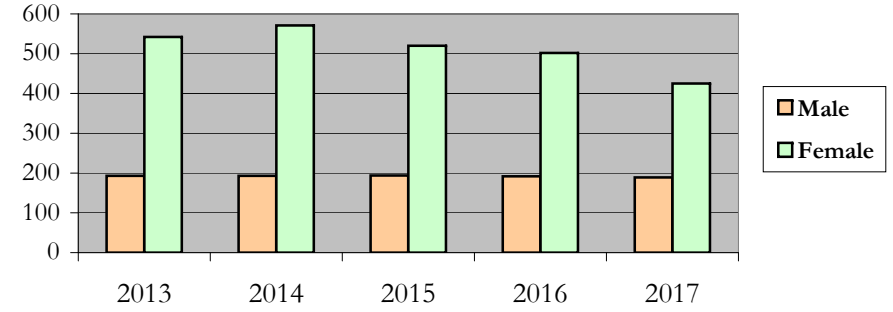
College of Education

Fall 2013 - Fall 2017

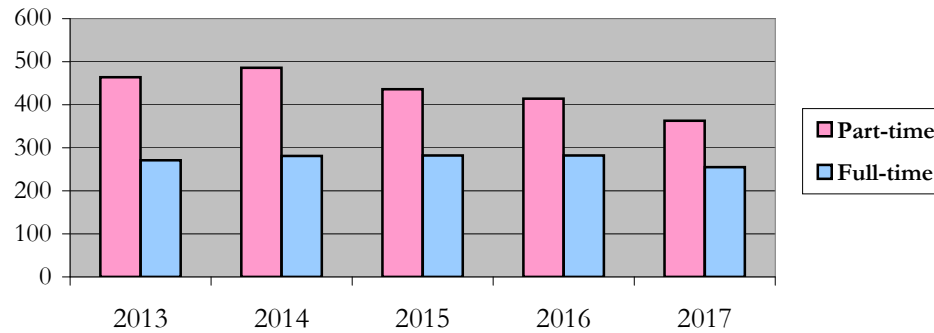
### New and Continuing Enrollment



### Enrollment by Gender



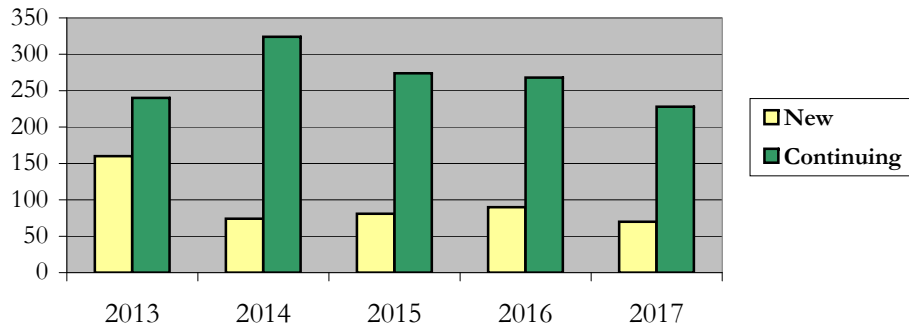
### Enrollment by Student Enrollment Time



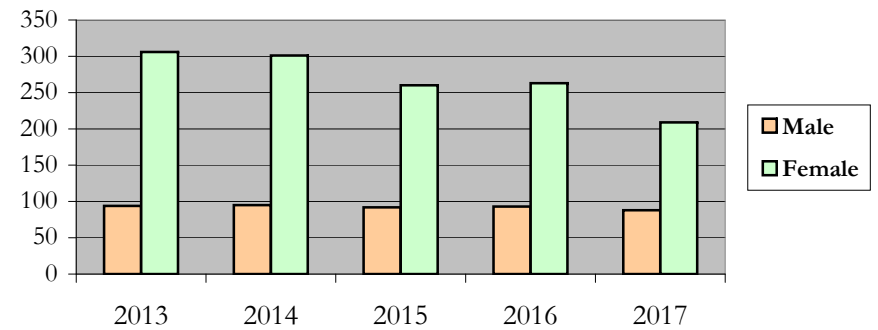
**Enrollment**  
**by Student Type, Enrollment Time, and Gender (Master's Students)**

College of Education  
 Fall 2013 - Fall 2017

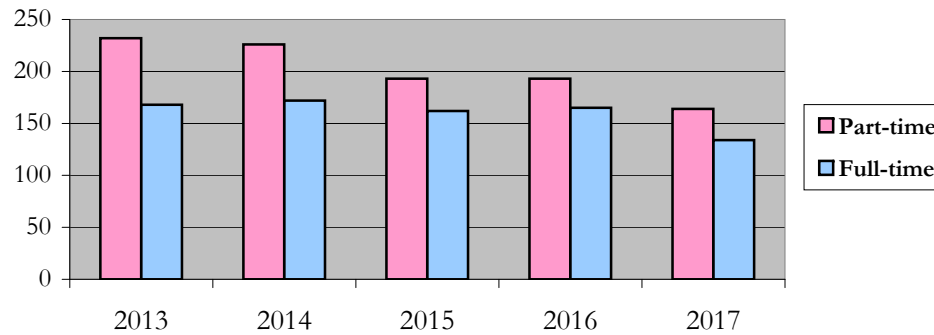
**New and Continuing Enrollment**



**Enrollment by Gender**



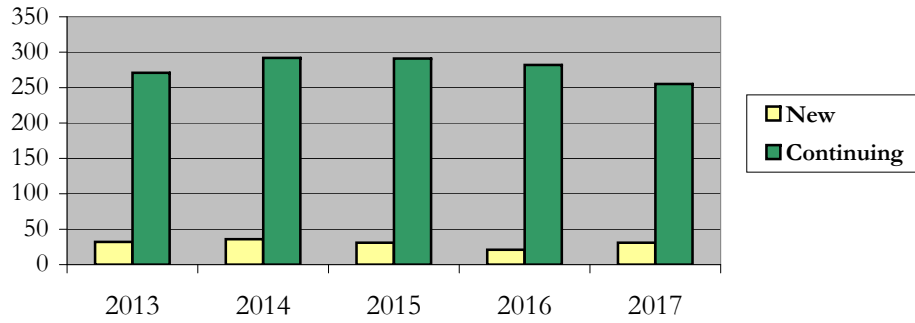
**Enrollment by Student Enrollment Time**



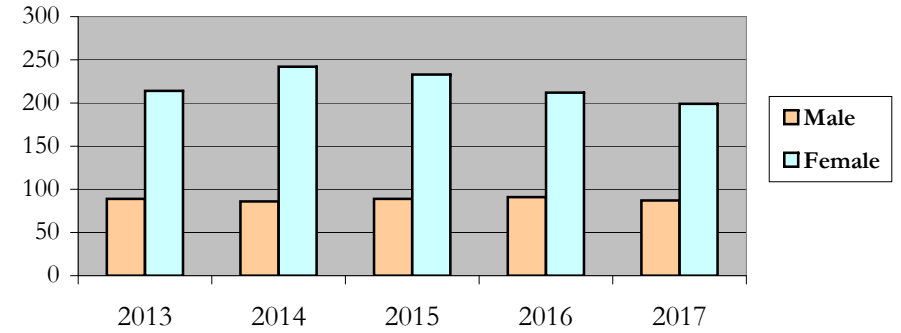
# Enrollment by Student Type, Enrollment Time, and Gender (Doctorate Students)

College of Education  
Fall 2013 - Fall 2017

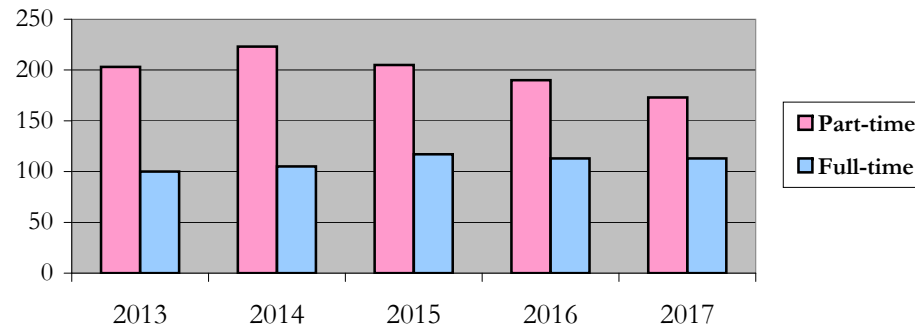
### New and Continuing Enrollment



### Enrollment by Gender



### Enrollment by Student Enrollment Time



# Degrees Conferred by Race/Ethnicity

College of Education

Fall 2013 - Fall 2017

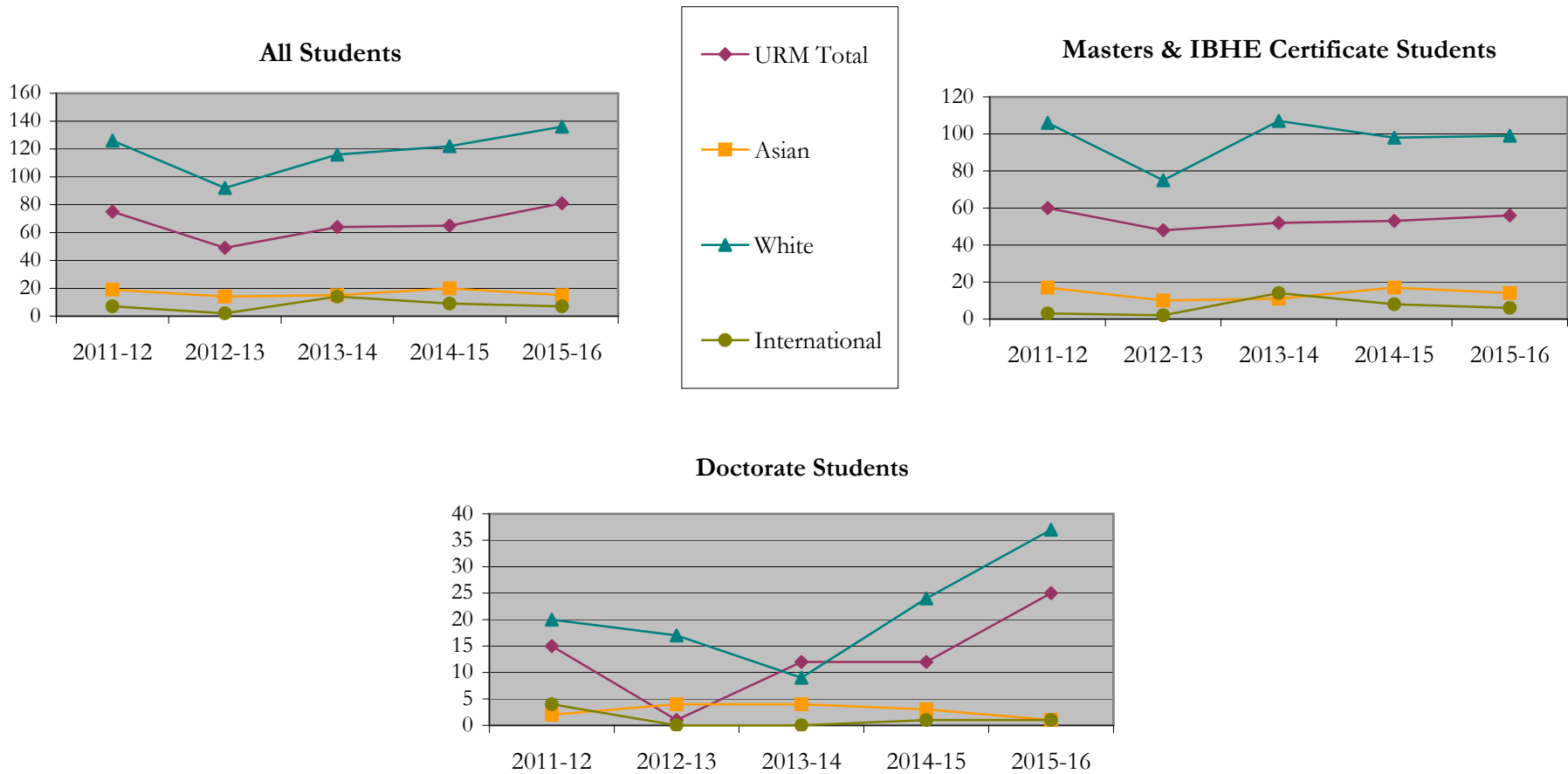
		Total	Under Represented Minorities (URM)								Asian	Native Hawaiian or Pacific Islander	White	Two or More Races	International	Not Reported					
			American Indian or Alaska Native		Black or African American		Hispanic / Latino		URM Total												
			Count	%	Count	%	Count	%	Count	%							Count	%	Count	%	Count
All	2012 - 13	241	0	0.0	44	18.3	31	12.9	75	31.1	19	7.9	0	0.0	126	52.3	7	2.9	7	2.9	7
	2013 - 14	172	0	0.0	21	12.2	28	16.3	49	28.5	14	8.1	0	0.0	92	53.5	3	1.7	2	1.2	12
	2014 - 15	222	0	0.0	30	13.5	34	15.3	64	28.8	15	6.8	1	0.5	116	52.3	4	1.8	14	6.3	8
	2015 - 16	225	0	0.0	25	11.1	40	17.8	65	28.9	20	8.9	0	0.0	122	54.2	4	1.8	9	4.0	5
	2016 - 17	248	0	0.0	34	13.7	47	19.0	81	32.7	15	6.0	0	0.0	136	54.8	7	2.8	7	2.8	2
Masters & IBHE Certificate	2012 - 13	199	0	0.0	30	15.1	30	15.1	60	30.2	17	8.5	0	0.0	106	53.3	6	3.0	3	1.5	7
	2013 - 14	148	0	0.0	20	13.5	28	18.9	48	32.4	10	6.8	0	0.0	75	50.7	2	1.4	2	1.4	11
	2014 - 15	197	0	0.0	23	11.7	29	14.7	52	26.4	11	5.6	1	0.5	107	54.3	4	2.0	14	7.1	8
	2015 - 16	185	0	0.0	20	10.8	33	17.8	53	28.6	17	9.2	0	0.0	98	53.0	4	2.2	8	4.3	5
	2016 - 17	181	0	0.0	20	11.0	36	19.9	56	30.9	14	7.7	0	0.0	99	54.7	4	2.2	6	3.3	2
Doctorate	2012 - 13	42	0	0.0	14	33.3	1	2.4	15	35.7	2	4.8	0	0.0	20	47.6	1	2.4	4	9.5	0
	2013 - 14	24	0	0.0	1	4.2	0	0.0	1	4.2	4	16.7	0	0.0	17	70.8	1	4.2	0	0.0	1
	2014 - 15	25	0	0.0	7	28.0	5	20.0	12	48.0	4	16.0	0	0.0	9	36.0	0	0.0	0	0.0	0
	2015 - 16	40	0	0.0	5	12.5	7	17.5	12	30.0	3	7.5	0	0.0	24	60.0	0	0.0	1	2.5	0
	2016 - 17	67	0	0.0	14	20.9	11	16.4	25	37.3	1	1.5	0	0.0	37	55.2	3	4.5	1	1.5	0
Non-Degree & Campus Certificate	2012 - 13	0	0	0.0	0	0.0	0	0.0	0	0.0	0	0.0	0	0.0	0	0.0	0	0.0	0	0.0	0
	2013 - 14	0	0	0.0	0	0.0	0	0.0	0	0.0	0	0.0	0	0.0	0	0.0	0	0.0	0	0.0	0
	2014 - 15	0	0	0.0	0	0.0	0	0.0	0	0.0	0	0.0	0	0.0	0	0.0	0	0.0	0	0.0	0
	2015 - 16	0	0	0.0	0	0.0	0	0.0	0	0.0	0	0.0	0	0.0	0	0.0	0	0.0	0	0.0	0
	2016 - 17	0	0	0.0	0	0.0	0	0.0	0	0.0	0	0.0	0	0.0	0	0.0	0	0.0	0	0.0	0

**Note:** Each row represents a fiscal year, beginning with Summer term and ending with Spring.



# Degrees Conferred by Race/Ethnicity

College of Education  
Fall 2013 - Fall 2017



**Notes:** 1) URM stands for Under-Represented Minority and includes American Indian or Alaska Native; Black or African-American; Hispanic / Latino race/ethnicity groups  
 2) Individual URM groups, Native Hawaiian Pacific Islander, Two or More Races, and Other race/ethnicity categories left off this charts due to relatively low numbers

**Degrees Conferred  
by Gender**

College of Education  
Fall 2013 - Fall 2017

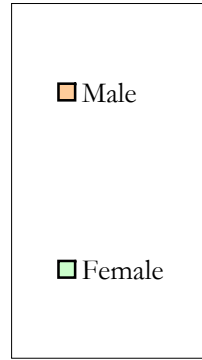
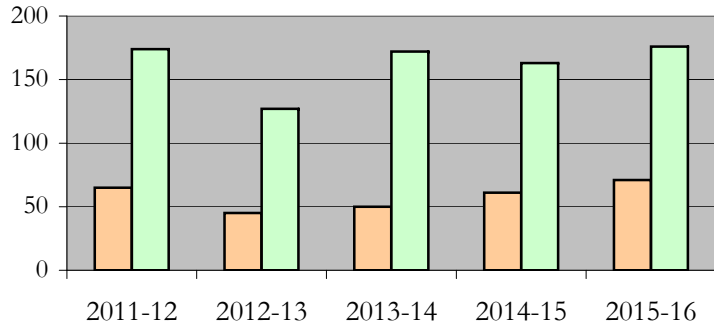
		Total	Male		Female		Not Reported
			Count	%	Count	%	
All	2012 - 13	241	65	27.0	174	72.2	2
	2013 - 14	172	45	26.2	127	73.8	0
	2014 - 15	222	50	22.5	172	77.5	0
	2015 - 16	225	61	27.1	163	72.4	1
	2016 - 17	248	71	28.6	176	71.0	1
Masters & IBHE Certificate	2012 - 13	199	49	24.6	148	74.4	2
	2013 - 14	148	34	23.0	114	77.0	0
	2014 - 15	197	43	21.8	154	78.2	0
	2015 - 16	185	51	27.6	133	71.9	1
	2016 - 17	181	50	27.6	130	71.8	1
Doctorate	2012 - 13	42	16	38.1	26	61.9	0
	2013 - 14	24	11	45.8	13	54.2	0
	2014 - 15	25	7	28.0	18	72.0	0
	2015 - 16	40	10	25.0	30	75.0	0
	2016 - 17	67	21	31.3	46	68.7	0
Campus Certificates	2012 - 13	0	0	0.0	0	0.0	0
	2013 - 14	0	0	0.0	0	0.0	0
	2014 - 15	0	0	0.0	0	0.0	0
	2015 - 16	0	0	0.0	0	0.0	0
	2016 - 17	0	0	0.0	0	0.0	0

**Note:** Each row represents a fiscal year, beginning with Summer term and ending with Spring.

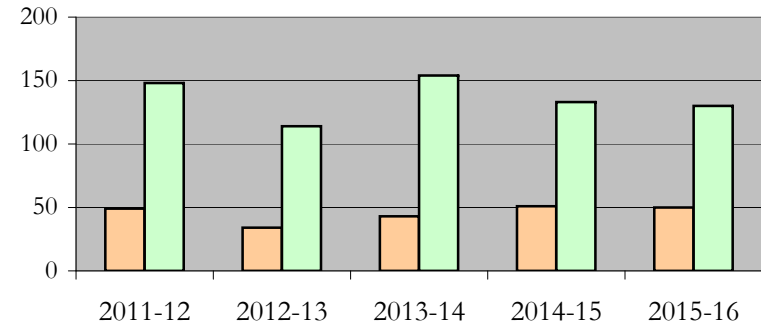
# Degrees Conferred by Gender

College of Education  
Fall 2013 - Fall 2017

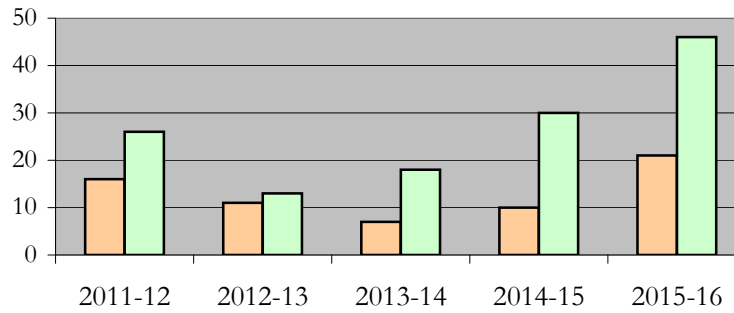
### All Students



### Masters & IBHE Certificate Students



### Doctorate Students



## **Appendix A**

College of Education

Fall 2013 - Fall 2017

### **List of program codes included in this document**

20FS0093MED  
20FS0210PHD  
20FS1181PHD  
20FS1183PHD  
20FS1355NDEG  
20FS1592PHD  
20FS4015EDD  
20FS4069MED  
20FS4070MED  
20FS4070PHD  
20FS5082MED  
20FS5102MED  
20FS5105MED  
20FS5106MED  
20FS5106MEDU  
20FS5129PHD  
20FS5208NDEU  
20FS5343MED  
20FS5357PHD  
20FS5523MED  
20FS5524MED  
20FS8547MED  
20FS8549MED  
20FS8550MED  
2PFS5106MEDU  
2PFS5208NDEU

**Notes:** 1) Program codes are sorted by alphabetical order in column-wise fashion

2) Program codes highlighted in yellow did not have applications, enrollment, nor degrees conferred in the covered period