

Matriculation

Diversity Pipeline

Educational_Psychology_PHD [20FS0210PHD]

Fall 2014 through Fall 2018

Fall Semester Year	Applied					Admitted					Non-URM Admitted to Applied Yield %	URM Admitted to Applied Yield %	New Enrollment					Non-URM Enrolled to Admitted Yield %	URM Enrolled to Admitted Yield %	Total Enrollment				
	Grand Total	Non-URM Total		URM Total		Grand Total	Non-URM Total		URM Total				Grand Total	Non-URM Total		URM Total				Grand Total	Non-URM Total		URM Total	
		Count	%	Count	%		Count	%	Count	%				Count	%	Count	%				Count	%	Count	%
	Count	%	Count	%	Count	%	Count	%	Count	%			Count	%	Count	%	Count			%	Count	%	Count	%
2014	28	22	78.6%	6	21.4%	11	10	90.9%	1	9.1%	45.5%	16.7%	4	4	100.0%	0	0.0%	40.0%	0.0%	47	40	85.1%	7	14.9%
2015	25	20	80.0%	5	20.0%	5	3	60.0%	2	40.0%	15.0%	40.0%	1	0	0.0%	1	100.0%	0.0%	50.0%	45	37	82.2%	8	17.8%
2016	35	26	74.3%	9	25.7%	16	12	75.0%	4	25.0%	46.2%	44.4%	7	4	57.1%	3	42.9%	33.3%	75.0%	48	39	81.3%	9	18.8%
2017	26	17	65.4%	9	34.6%	6	3	50.0%	3	50.0%	17.6%	33.3%	2	1	50.0%	1	50.0%	33.3%	33.3%	43	33	76.7%	10	23.3%
2018	16	14	87.5%	2	12.5%	12	10	83.3%	2	16.7%	71.4%	100.0%	4	3	75.0%	1	25.0%	30.0%	50.0%	44	34	77.3%	10	22.7%
Average	26	20	76.2%	6	23.8%	10	8	76.0%	2	24.0%	38.4%	38.7%	4	2	66.7%	1	33.3%	31.6%	50.0%	45	37	80.6%	8.8	19.4%

Note: URM stands for Under-Represented Minority and includes American Indian or Alaska Native; Black or African-American; Hispanic / Latino race/ethnicity groups

Applications, Admission, & New Enrollment Yields

by Race/Ethnicity & Gender

Educational_Psychology_PHD [20FS0210PHD]

Fall 2014 through Fall 2018

	Fall Semester Year	Total	Under Represented Minorities (URM)										Race/Eth Not Reported	Male	Female												
			American Indian or Alaska Native		Black or African American		Hispanic / Latino		URM Total		Asian					Native Hawaiian or Pacific Islander		White		Two or More Races		International					
		Count	% Yield	Count	% Yield	Count	% Yield	Count	% Yield	Count	% Yield	Count	% Yield	Count	% Yield	Count	% Yield	Count	% Yield	Count	% Yield	Count	% Yield	Count	% Yield		
Applied	2014	28		0		3		3		6		6		0		7		1		8		0		5		23	
	2015	25		0		3		2		5		2		0		8		2		8		0		6		19	
	2016	35		0		5		4		9		0		0		12		1		11		2		7		28	
	2017	26		0		4		5		9		1		0		6		0		8		2		8		18	
	2018	16		0		1		1		2		1		0		7		0		5		1		3		13	
				Count	% Yield	Count	% Yield	Count	% Yield	Count	% Yield	Count	% Yield	Count	% Yield	Count	% Yield	Count	% Yield	Count	% Yield	Count	% Yield	Count	% Yield	Count	% Yield
Admitted	2014	11	39.3	0	0.0	0	0.0	1	33.3	1	16.7	4	66.7	0	0.0	3	42.9	1	100.0	2	25.0	0		2	40.0	9	39.1
	2015	5	20.0	0	0.0	1	33.3	1	50.0	2	40.0	0	0.0	0	0.0	3	37.5	0	0.0	0	0.0	0		2	33.3	3	15.8
	2016	16	45.7	0	0.0	1	20.0	3	75.0	4	44.4	0	0.0	0	0.0	5	41.7	1	100.0	6	54.5	0		5	71.4	11	39.3
	2017	6	23.1	0	0.0	2	50.0	1	20.0	3	33.3	0	0.0	0	0.0	1	16.7	0	0.0	2	25.0	0		2	25.0	4	22.2
	2018	12	75.0	0	0.0	1	100.0	1	100.0	2	100.0	1	100.0	0	0.0	5	71.4	0	0.0	3	60.0	1		3	100.0	9	69.2
				Count	% Yield	Count	% Yield	Count	% Yield	Count	% Yield	Count	% Yield	Count	% Yield	Count	% Yield	Count	% Yield	Count	% Yield	Count	% Yield	Count	% Yield	Count	% Yield
Enrolled	2014	4	36.4	0	0.0	0	0.0	0	0.0	0	0.0	3	75.0	0	0.0	0	0.0	0	0.0	1	50.0	0		1	50.0	3	33.3
	2015	1	20.0	0	0.0	1	100.0	0	0.0	1	50.0	0	0.0	0	0.0	0	0.0	0	0.0	0	0.0	0		1	50.0	0	0.0
	2016	7	43.8	0	0.0	1	100.0	2	66.7	3	75.0	0	0.0	0	0.0	4	80.0	0	0.0	0	0.0	0		1	20.0	6	54.5
	2017	2	33.3	0	0.0	1	50.0	0	0.0	1	33.3	0	0.0	0	0.0	0	0.0	0	0.0	1	50.0	0		0	0.0	2	50.0
	2018	4	33.3	0	0.0	1	100.0	0	0.0	1	50.0	1	100.0	0	0.0	1	20.0	0	0.0	1	33.3	0		1	33.3	3	33.3

Notes:

- 1) URM stands for Under-Represented Minority and includes American Indian or Alaska Native; Black or African-American; Hispanic / Latino race/ethnicity groups
- 2) Unreported Gender identification is not shown; Male and Female total may not match Total
- 3) In rare situations, the "% Yield" columns may be greater than 100. There are three potential reasons for this:
 - a) Students that received Graduate College approved transfers may not have an admission record for the program that they enrolled into.
 - b) Students with a secondary curriculum enrollment may not have an admission record for that secondary program.
 - c) Students who were newly enrolled in the summer term prior to the fall were added to the fall new enrollment totals.

Applications, Admission, & New Enrollment Yields, cont. by Race/Ethnicity & Gender

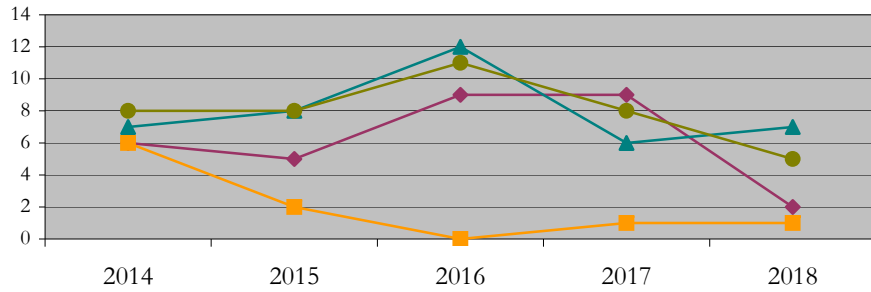
Educational_Psychology_PHD [20FS0210PHD]

Fall 2014 through Fall 2018

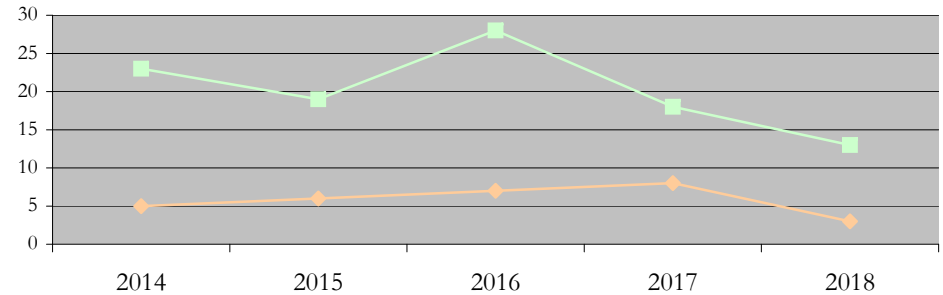
URM Total Asian White International

Male Female

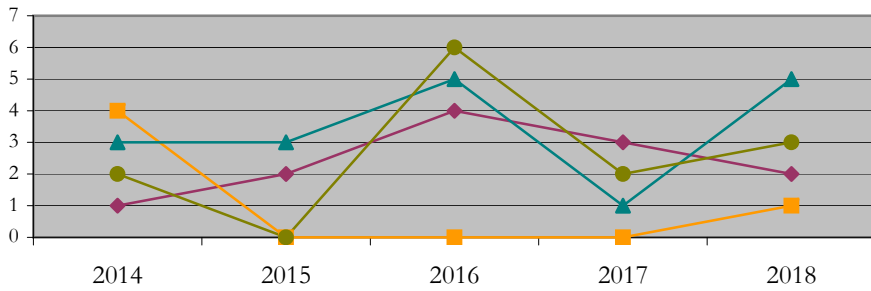
Applications by Race/Ethnicity



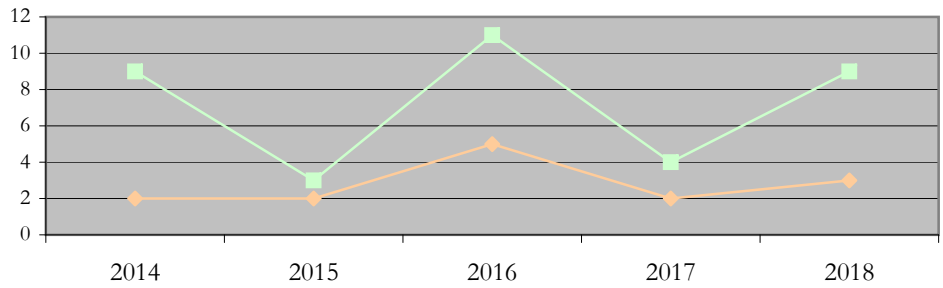
Applications by Gender



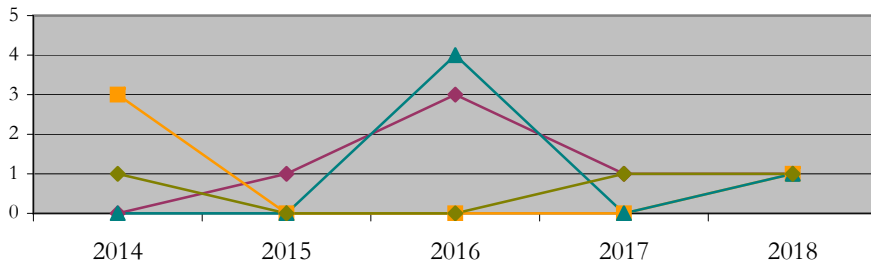
Admissions by Race/Ethnicity



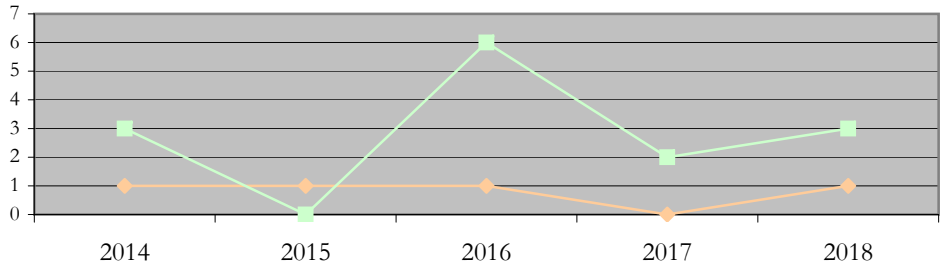
Admissions by Gender



New Enrollments by Race/Ethnicity



New Enrollments by Gender



Notes: 1) URM stands for Under-Represented Minority and includes American Indian or Alaska Native; Black or African-American; Hispanic / Latino race/ethnicity groups
2) Individual URM groups, Native Hawaiian Pacific Islander, Two or More Races, and Other race/ethnicity categories left off these charts due to relatively low numbers

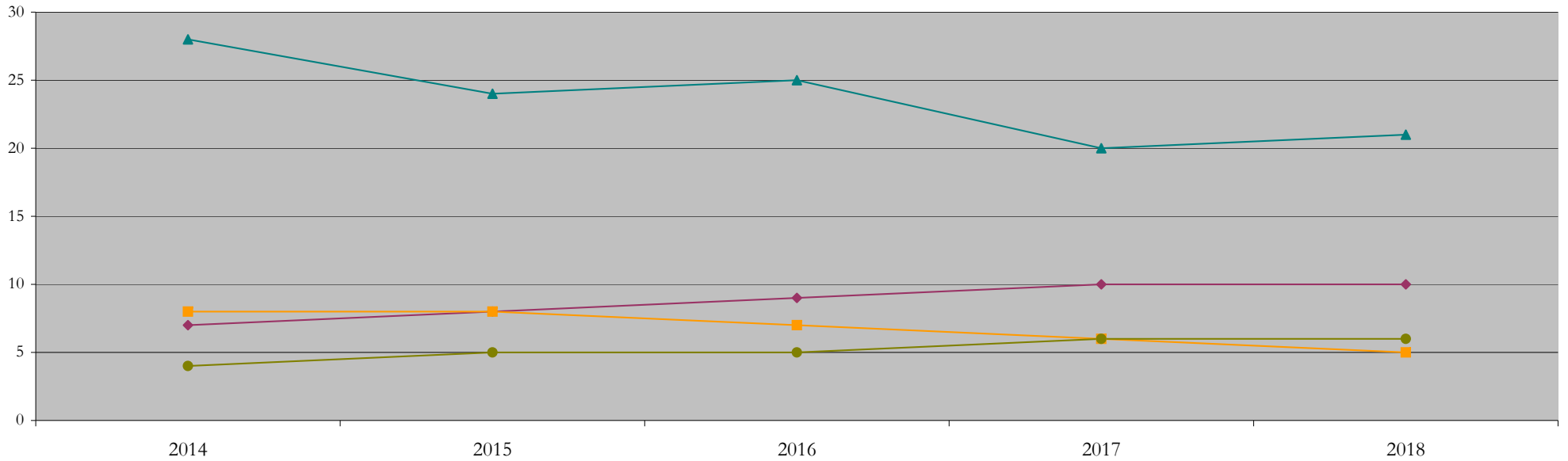
Total Enrollment (includes secondary curriculum)

by Race/Ethnicity

Educational_Psychology_PHD [20FS0210PHD]

Fall 2014 through Fall 2018

Fall Semester Year	Total	Under Represented Minorities (URM)										Asian	Native Hawaiian or Pacific Islander	White		Two or More Races		International		Race/Eth Not Reported
		American Indian or Alaska Native		Black or African American		Hispanic / Latino		URM Total		Count				Count	%	Count	%	Count	%	Count
		Count	%	Count	%	Count	%	Count	%	Count	%			Count	%	Count	%	Count	%	Count
2014	47	0	0.0	5	10.6	2	4.3	7	14.9	8	17.0	0	0.0	28	59.6	0	0.0	4	8.5	0
2015	45	0	0.0	5	11.1	3	6.7	8	17.8	8	17.8	0	0.0	24	53.3	0	0.0	5	11.1	0
2016	48	0	0.0	6	12.5	3	6.3	9	18.8	7	14.6	0	0.0	25	52.1	0	0.0	5	10.4	2
2017	43	0	0.0	6	14.0	4	9.3	10	23.3	6	14.0	0	0.0	20	46.5	0	0.0	6	14.0	1
2018	44	0	0.0	6	13.6	4	9.1	10	22.7	5	11.4	0	0.0	21	47.7	0	0.0	6	13.6	2



Notes: 1) URM stands for Under-Represented Minority and includes American Indian or Alaska Native; Black or African-American; Hispanic / Latino race/ethnicity groups
 2) Individual URM groups, Native Hawaiian Pacific Islander, Two or More Races, and Other race/ethnicity categories left off this chart due to relatively low numbers

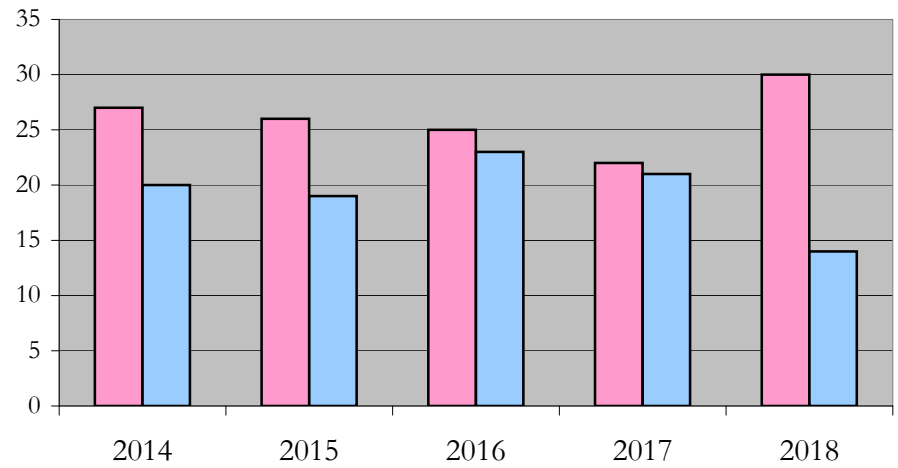
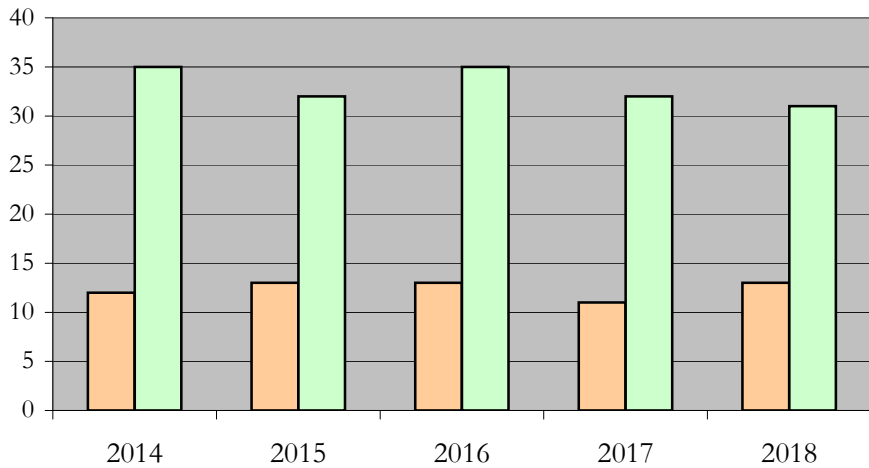
Total Enrollment (includes secondary curriculum)

by Student Type, Gender, and Enrollment Time

Educational_Psychology_PHD [20FS0210PHD]

Fall 2014 through Fall 2018

Fall Semester Year	Total	New		Continuing		Male		Female		Gender Not Reported	Part-time		Full-time	
		Count	%	Count	%	Count	%	Count	%	Count	Count	%	Count	%
2014	47	4	8.5	43	91.5	12	25.5	35	74.5	0	27	57.4	20	42.6
2015	45	1	2.2	44	97.8	13	28.9	32	71.1	0	26	57.8	19	42.2
2016	48	7	14.6	41	85.4	13	27.1	35	72.9	0	25	52.1	23	47.9
2017	43	2	4.7	41	95.3	11	25.6	32	74.4	0	22	51.2	21	48.8
2018	44	4	9.1	40	90.9	13	29.5	31	70.5	0	30	68.2	14	31.8



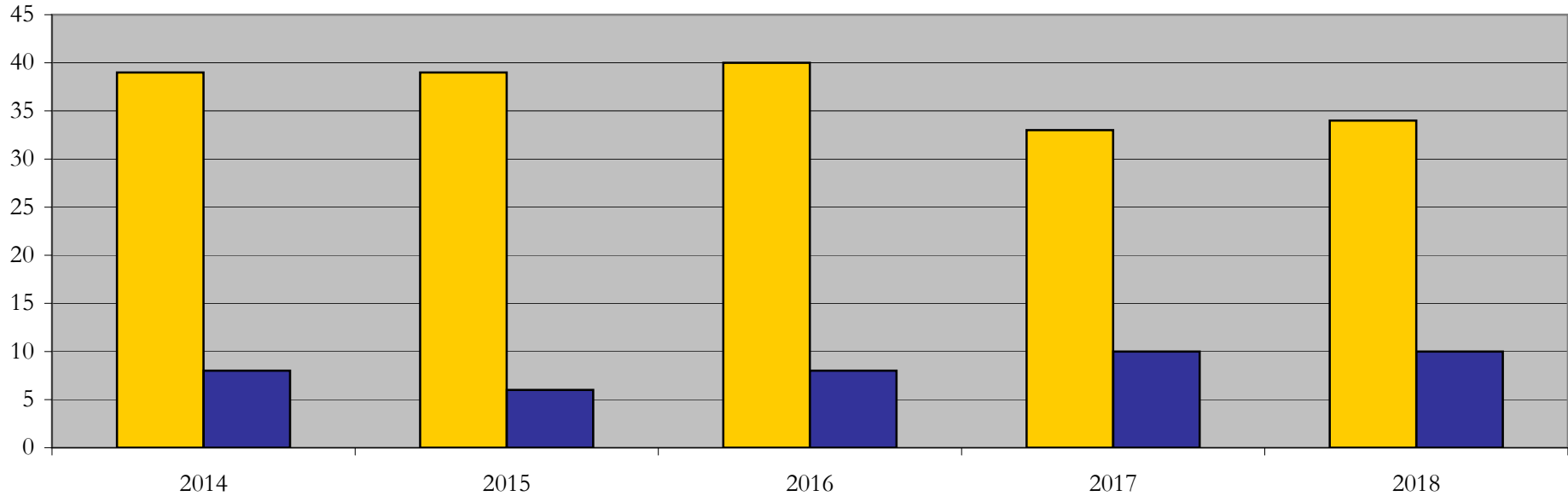
Enrollment & Degrees Conferred

by Primary/Secondary, Average Age, State Residency

Educational_Psychology_PHD [20FS0210PHD]

Fall 2014 through Fall 2018

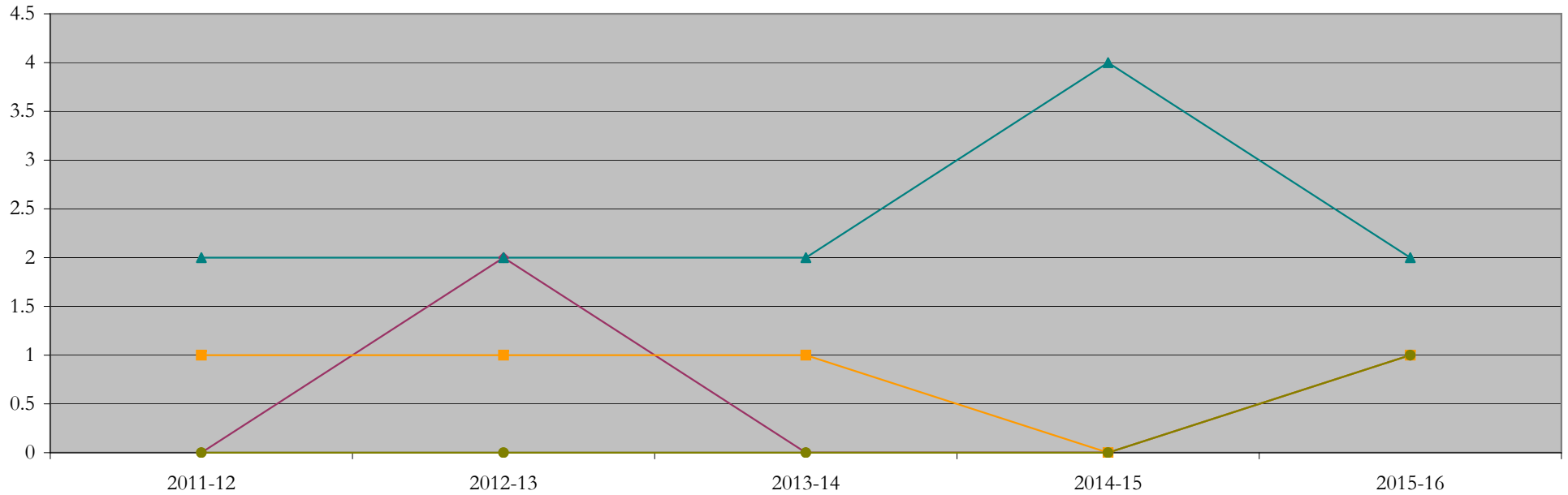
Fall Semester Year	Enrollment			Average Age			State Residency of Total Enrollment					
	Total	Primary	Secondary	Fall New Enrollment	Fall Continuing Enrollment	Academic Year Graduating Class	Residents			Non-Residents		
							Total Enrollment	New Enrollment	Continuing Enrollment	Total Enrollment	New Enrollment	Continuing Enrollment
2014	47	46	1	29	36	37	39	2	37	8	2	6
2015	45	43	2	33	37	36	39	1	38	6	0	6
2016	48	47	1	31	37	41	40	6	34	8	1	7
2017	43	43	0	29	36	35	33	1	32	10	1	9
2018	44	44	0	40	37	34	34	3	31	10	1	9



Degrees Conferred by Race/Ethnicity

Educational_Psychology_PHD [20FS0210PHD]
AY2011-12 through 2015-16

Academic Year	Total	Under Represented Minorities (URM)								Asian		Native Hawaiian or Pacific		White		Two or More Races		International		Not Reported
		American Indian or Alaska Native		Black or African American		Hispanic / Latino		URM Total		Count	%	Count	%	Count	%	Count	%	Count	%	
		Count	%	Count	%	Count	%	Count	%											
2013 - 2014	3	0	0.0	0	0.0	0	0.0	0	0.0	1	33.3	0	0.0	2	66.7	0	0.0	0	0.0	0
2014 - 2015	5	0	0.0	2	40.0	0	0.0	2	40.0	1	20.0	0	0.0	2	40.0	0	0.0	0	0.0	0
2015 - 2016	3	0	0.0	0	0.0	0	0.0	0	0.0	1	33.3	0	0.0	2	66.7	0	0.0	0	0.0	0
2016 - 2017	4	0	0.0	0	0.0	0	0.0	0	0.0	0	0.0	0	0.0	4	100.0	0	0.0	0	0.0	0
2017 - 2018	5	0	0.0	1	20.0	0	0.0	1	20.0	1	20.0	0	0.0	2	40.0	0	0.0	1	20.0	0



Notes: 1) URM stands for Under-Represented Minority and includes American Indian or Alaska Native; Black or African-American; Hispanic / Latino race/ethnicity groups
2) Individual URM groups, Native Hawaiian Pacific Islander, Two or More Races, and Other race/ethnicity categories left off this chart due to relatively low numbers

Degrees Conferred

by Gender

Educational_Psychology_PHD [20FS0210PHD]

AY2011-12 through 2015-16

Academic Year	Total	Male		Female		Not Reported
		Count	%	Count	%	
2013 - 2014	3	0	0.0	3	100.0	0
2014 - 2015	5	2	40.0	3	60.0	0
2015 - 2016	3	0	0.0	3	100.0	0
2016 - 2017	4	1	25.0	3	75.0	0
2017 - 2018	5	0	0.0	5	100.0	0

