

Matriculation

Diversity Pipeline

Management_Information_Systems_MS [20FS9890MS]

Fall 2013 through Fall 2017

Fall Semester Year	Applied					Admitted					Non-URM Admitted to Applied Yield %	URM Admitted to Applied Yield %	New Enrollment					Non-URM Enrolled to Admitted Yield %	URM Enrolled to Admitted Yield %	Total Enrollment				
	Grand Total	Non-URM Total		URM Total		Grand Total	Non-URM Total		URM Total				Grand Total	Non-URM Total		URM Total				Grand Total	Non-URM Total		URM Total	
		Count	%	Count	%		Count	%	Count	%				Count	%	Count	%				Count	%	Count	%
	Count	%	Count	%	Count	%	Count	%	Count	%			Count	%	Count	%	Count			%	Count	%	Count	%
2013	981	975	99.4%	6	0.6%	343	340	99.1%	3	0.9%	34.9%	50.0%	76	75	98.7%	1	1.3%	22.1%	33.3%	149	147	98.7%	2	1.3%
2014	1228	1222	99.5%	6	0.5%	460	456	99.1%	4	0.9%	37.3%	66.7%	121	118	97.5%	3	2.5%	25.9%	75.0%	225	220	97.8%	5	2.2%
2015	1523	1515	99.5%	8	0.5%	536	533	99.4%	3	0.6%	35.2%	37.5%	116	115	99.1%	1	0.9%	21.6%	33.3%	265	260	98.1%	5	1.9%
2016	1381	1375	99.6%	6	0.4%	550	546	99.3%	4	0.7%	39.7%	66.7%	94	91	96.8%	3	3.2%	16.7%	75.0%	251	244	97.2%	7	2.8%
2017	1074	1063	99.0%	11	1.0%	513	506	98.6%	7	1.4%	47.6%	63.6%	74	70	94.6%	4	5.4%	13.8%	57.1%	218	209	95.9%	9	4.1%
Average	1237	1230	99.4%	7	0.6%	480	476	99.1%	4	0.9%	38.7%	56.8%	96	94	97.5%	2	2.5%	19.7%	57.1%	222	216	97.5%	5.6	2.5%

Note: URM stands for Under-Represented Minority and includes American Indian or Alaska Native; Black or African-American; Hispanic / Latino race/ethnicity groups

Applications, Admission, & New Enrollment Yields

by Race/Ethnicity & Gender

Management_Information_Systems_MS [20FS9890MS]

Fall 2013 through Fall 2017

	Fall Semester Year	Total	Under Represented Minorities (URM)										Race/Eth Not Reported	Male	Female											
			American Indian or Alaska Native		Black or African American		Hispanic / Latino		URM Total		Asian					Native Hawaiian or Pacific Islander		White		Two or More Races		International				
			Count	% Yield	Count	% Yield	Count	% Yield	Count	% Yield	Count	% Yield	Count	% Yield	Count	% Yield	Count	% Yield	Count	% Yield	Count	% Yield	Count	% Yield	Count	% Yield
Applied	2013	981	0		5		1		6		9		0		7		0		958		1		640		341	
	2014	1228	1		3		2		6		14		0		5		0		1201		2		815		413	
	2015	1523	0		5		3		8		12		0		11		0		1492		0		968		555	
	2016	1381	0		2		4		6		11		0		8		0		1354		2		803		577	
	2017	1074	0		4		7		11		23		0		4		1		1033		2		594		478	
			Count	% Yield	Count	% Yield	Count	% Yield	Count	% Yield	Count	% Yield	Count	% Yield	Count	% Yield	Count	% Yield	Count	% Yield	Count	% Yield	Count	% Yield	Count	% Yield
Admitted	2013	343	35.0	0	0.0	3	60.0	0	0.0	3	50.0	7	77.8	0	0.0	4	57.1	0	0.0	328	34.2	1	225	35.2	118	34.6
	2014	460	37.5	1	100.0	1	33.3	2	100.0	4	66.7	9	64.3	0	0.0	4	80.0	0	0.0	441	36.7	2	317	38.9	143	34.6
	2015	536	35.2	0	0.0	2	40.0	1	33.3	3	37.5	9	75.0	0	0.0	6	54.5	0	0.0	518	34.7	0	341	35.2	195	35.1
	2016	550	39.8	0	0.0	2	100.0	2	50.0	4	66.7	5	45.5	0	0.0	6	75.0	0	0.0	535	39.5	0	306	38.1	243	42.1
	2017	513	47.8	0	0.0	4	100.0	3	42.9	7	63.6	9	39.1	0	0.0	2	50.0	1	100.0	493	47.7	1	277	46.6	234	49.0
			Count	% Yield	Count	% Yield	Count	% Yield	Count	% Yield	Count	% Yield	Count	% Yield	Count	% Yield	Count	% Yield	Count	% Yield	Count	% Yield	Count	% Yield	Count	% Yield
Enrolled	2013	76	22.2	0	0.0	1	33.3	0	0.0	1	33.3	3	42.9	0	0.0	5	125.0	0	0.0	67	20.4	0	45	20.0	31	26.3
	2014	121	26.3	0	0.0	1	100.0	2	100.0	3	75.0	4	44.4	0	0.0	4	100.0	0	0.0	110	24.9	0	96	30.3	25	17.5
	2015	116	21.6	0	0.0	1	50.0	0	0.0	1	33.3	3	33.3	0	0.0	4	66.7	0	0.0	108	20.8	0	81	23.8	35	17.9
	2016	94	17.1	0	0.0	2	100.0	1	50.0	3	75.0	2	40.0	0	0.0	4	66.7	0	0.0	85	15.9	0	52	17.0	42	17.3
	2017	74	14.4	0	0.0	2	50.0	2	66.7	4	57.1	2	22.2	0	0.0	2	100.0	1	100.0	65	13.2	0	39	14.1	35	15.0

Notes:

- 1) URM stands for Under-Represented Minority and includes American Indian or Alaska Native; Black or African-American; Hispanic / Latino race/ethnicity groups
- 2) Unreported Gender identification is not shown; Male and Female total may not match Total
- 3) In rare situations, the "% Yield" columns may be greater than 100. There are three potential reasons for this:
 - a) Students that received Graduate College approved transfers may not have an admission record for the program that they enrolled into.
 - b) Students with a secondary curriculum enrollment may not have an admission record for that secondary program.
 - c) Students who were newly enrolled in the summer term prior to the fall were added to the fall new enrollment totals.

Applications, Admission, & New Enrollment Yields, cont. by Race/Ethnicity & Gender

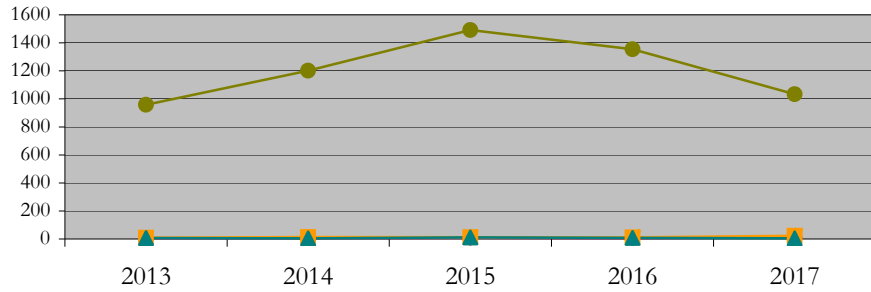
Management_Information_Systems_MS [20FS9890MS]

Fall 2013 through Fall 2017

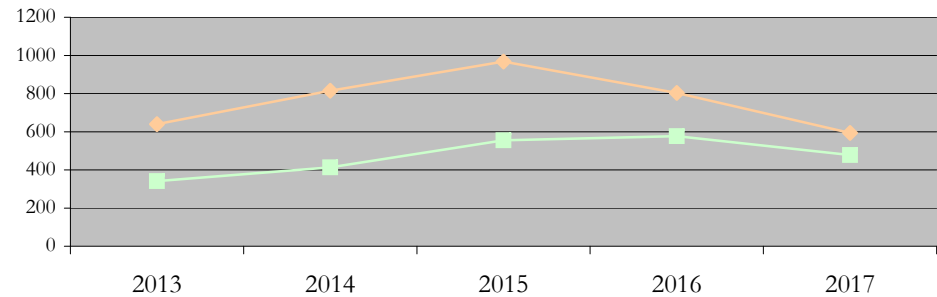
◆ URM Total ■ Asian ▲ White ● International

◆ Male ■ Female

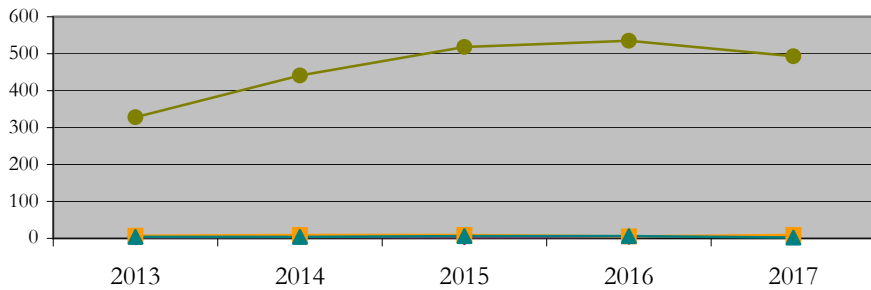
Applications by Race/Ethnicity



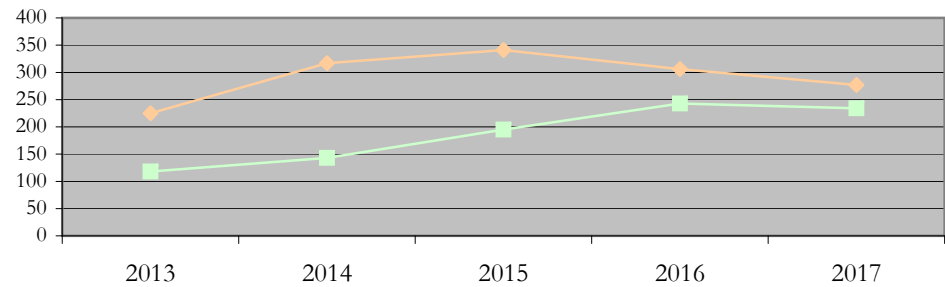
Applications by Gender



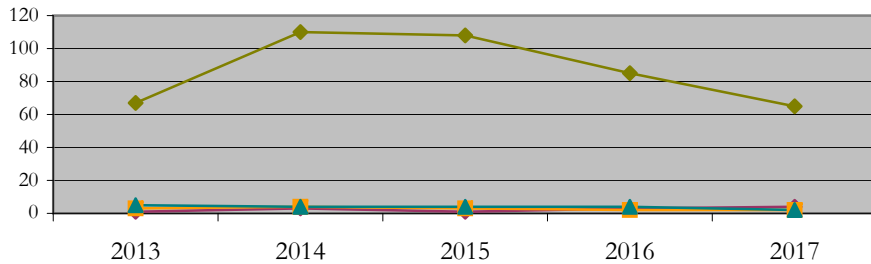
Admissions by Race/Ethnicity



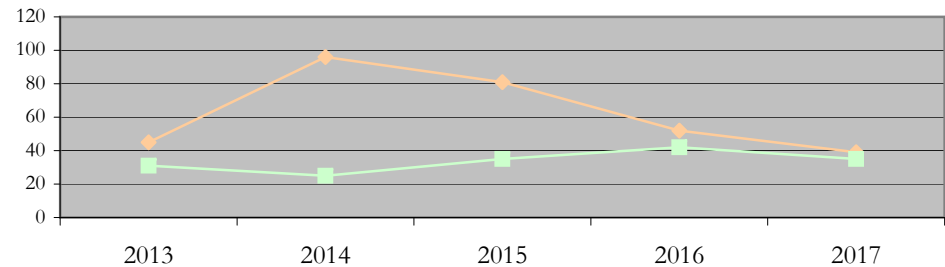
Admissions by Gender



New Enrollments by Race/Ethnicity



New Enrollments by Gender



Notes: 1) URM stands for Under-Represented Minority and includes American Indian or Alaska Native; Black or African-American; Hispanic / Latino race/ethnicity groups
2) Individual URM groups, Native Hawaiian Pacific Islander, Two or More Races, and Other race/ethnicity categories left off these charts due to relatively low numbers

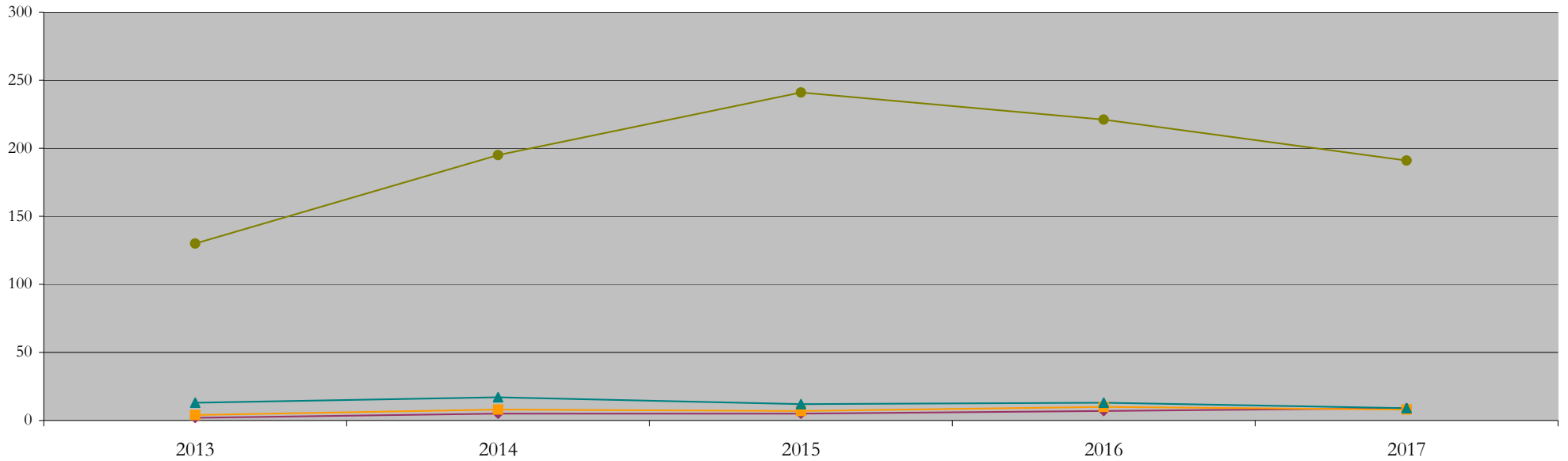
Total Enrollment (includes secondary curriculum)

by Race/Ethnicity

Management_Information_Systems_MS [20FS9890MS]

Fall 2013 through Fall 2017

Fall Semester Year	Total	Under Represented Minorities (URM)										Native Hawaiian or Pacific Islander	White		Two or More Races		International		Race/Eth Not Reported	
		American Indian or Alaska Native		Black or African American		Hispanic / Latino		URM Total		Asian			Count	%	Count	%	Count	%	Count	
		Count	%	Count	%	Count	%	Count	%	Count	%		Count	%	Count	%	Count	%	Count	
2013	149	0	0.0	1	0.7	1	0.7	2	1.3	4	2.7	0	0.0	13	8.7	0	0.0	130	87.2	0
2014	225	0	0.0	2	0.9	3	1.3	5	2.2	8	3.6	0	0.0	17	7.6	0	0.0	195	86.7	0
2015	265	0	0.0	3	1.1	2	0.8	5	1.9	7	2.6	0	0.0	12	4.5	0	0.0	241	90.9	0
2016	251	0	0.0	4	1.6	3	1.2	7	2.8	10	4.0	0	0.0	13	5.2	0	0.0	221	88.0	0
2017	218	0	0.0	5	2.3	4	1.8	9	4.1	8	3.7	0	0.0	9	4.1	1	0.5	191	87.6	0



Notes: 1) URM stands for Under-Represented Minority and includes American Indian or Alaska Native; Black or African-American; Hispanic / Latino race/ethnicity groups
 2) Individual URM groups, Native Hawaiian Pacific Islander, Two or More Races, and Other race/ethnicity categories left off this chart due to relatively low numbers

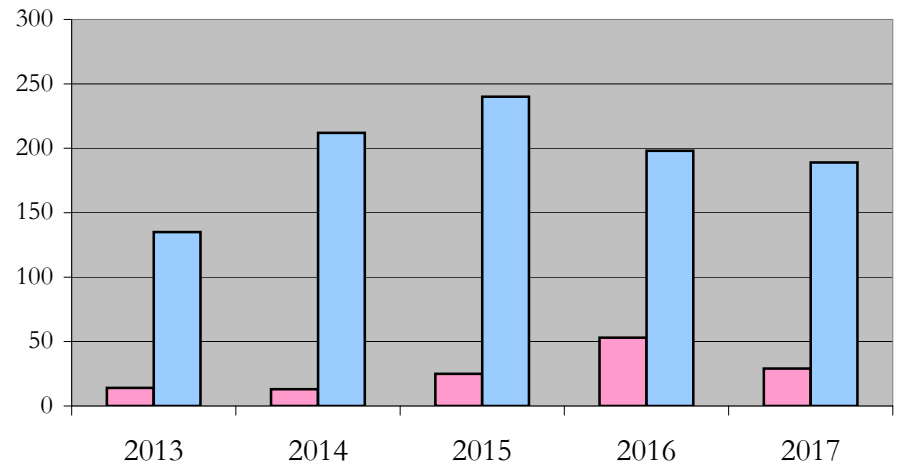
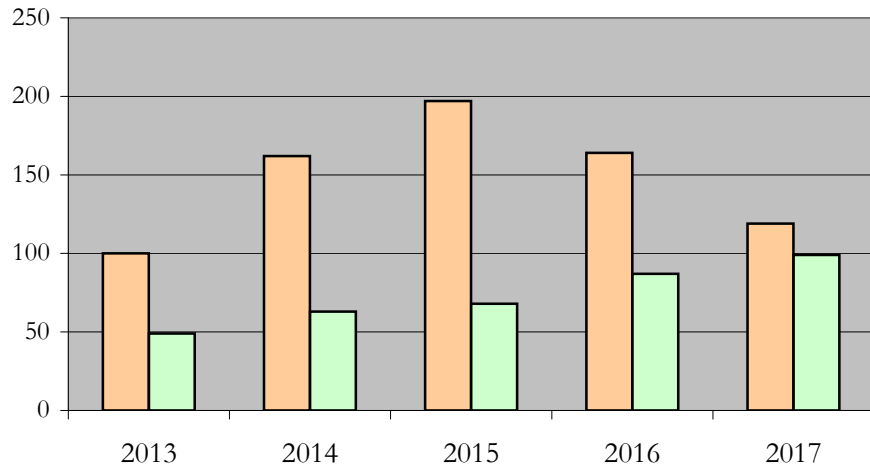
Total Enrollment (includes secondary curriculum)

by Student Type, Gender, and Enrollment Time

Management_Information_Systems_MS [20FS9890MS]

Fall 2013 through Fall 2017

Fall Semester Year	Total	New		Continuing		Male		Female		Gender Not Reported	Part-time		Full-time	
		Count	%	Count	%	Count	%	Count	%		Count	%	Count	%
2013	149	76	51.0	73	49.0	100	67.1	49	32.9	0	14	9.4	135	90.6
2014	225	121	53.8	104	46.2	162	72.0	63	28.0	0	13	5.8	212	94.2
2015	265	116	43.8	149	56.2	197	74.3	68	25.7	0	25	9.4	240	90.6
2016	251	94	37.5	157	62.5	164	65.3	87	34.7	0	53	21.1	198	78.9
2017	218	74	33.9	144	66.1	119	54.6	99	45.4	0	29	13.3	189	86.7



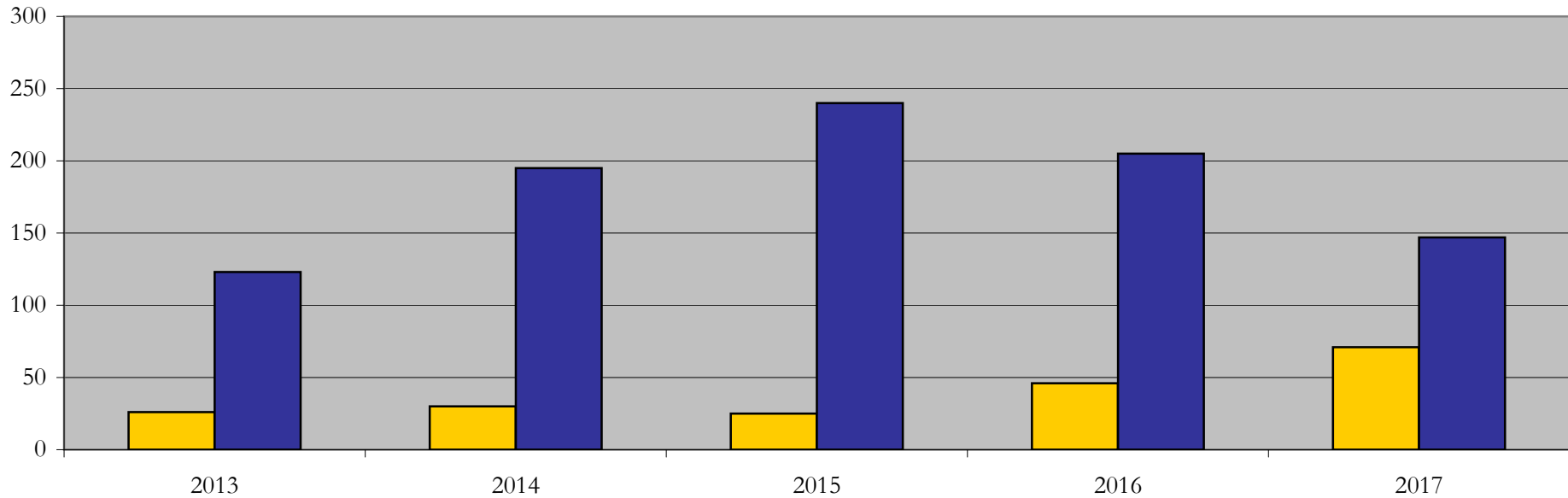
Enrollment & Degrees Conferred

by Primary/Secondary, Average Age, State Residency

Management_Information_Systems_MS [20FS9890MS]

Fall 2013 through Fall 2017

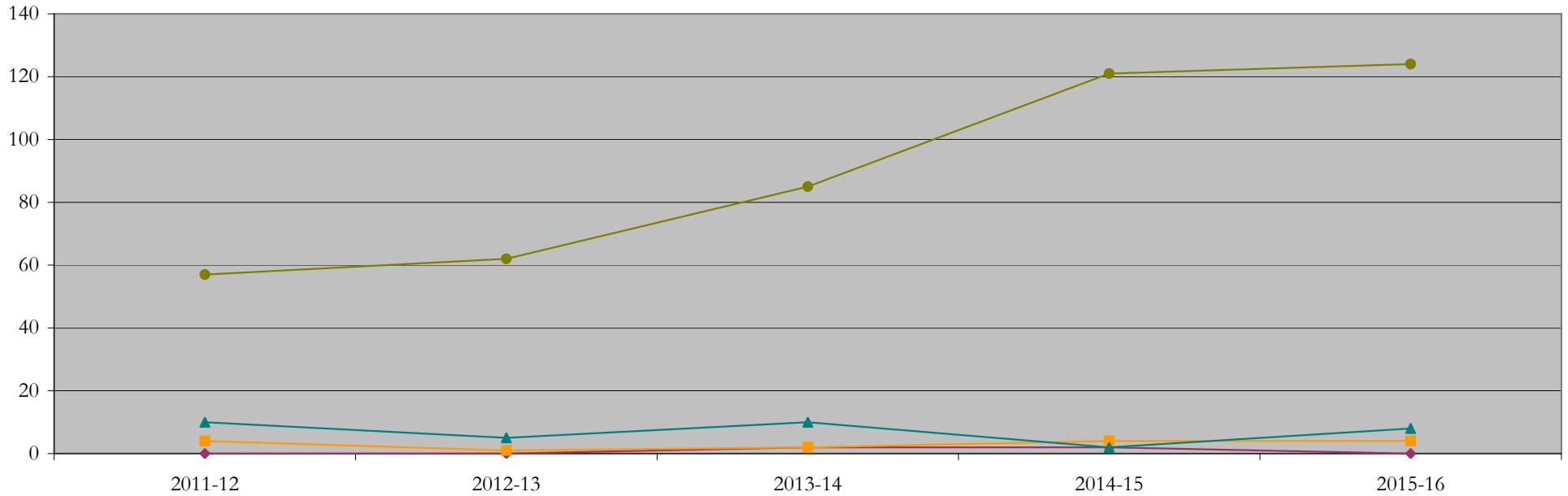
Fall Semester Year	Enrollment			Average Age			State Residency of Total Enrollment					
	Total	Primary	Secondary	Fall New Enrollment	Fall Continuing Enrollment	Academic Year Graduating Class	Residents			Non-Residents		
							Total Enrollment	New Enrollment	Continuing Enrollment	Total Enrollment	New Enrollment	Continuing Enrollment
2013	149	145	4	24	25	25	26	14	12	123	62	61
2014	225	220	5	24	26	24	30	11	19	195	110	85
2015	265	260	5	24	25	24	25	8	17	240	108	132
2016	251	249	2	24	25	25	46	11	35	205	83	122
2017	218	216	2	25	26	24	71	22	49	147	52	95



Degrees Conferred by Race/Ethnicity

Management_Information_Systems_MS [20FS9890MS]
AY2011-12 through 2015-16

Academic Year	Total	Under Represented Minorities (URM)								Asian		Native Hawaiian or Pacific		White		Two or More Races		International		Not Reported
		American Indian or Alaska Native		Black or African American		Hispanic / Latino		URM Total		Count	%	Count	%	Count	%	Count	%	Count	%	
		Count	%	Count	%	Count	%	Count	%											
2012 - 2013	71	0	0.0	0	0.0	0	0.0	0	0.0	4	5.6	0	0.0	10	14.1	0	0.0	57	80.3	0
2013 - 2014	68	0	0.0	0	0.0	0	0.0	0	0.0	1	1.5	0	0.0	5	7.4	0	0.0	62	91.2	0
2014 - 2015	99	0	0.0	1	1.0	1	1.0	2	2.0	2	2.0	0	0.0	10	10.1	0	0.0	85	85.9	0
2015 - 2016	129	0	0.0	1	0.8	1	0.8	2	1.6	4	3.1	0	0.0	2	1.6	0	0.0	121	93.8	0
2016 - 2017	136	0	0.0	0	0.0	0	0.0	0	0.0	4	2.9	0	0.0	8	5.9	0	0.0	124	91.2	0



Notes: 1) URM stands for Under-Represented Minority and includes American Indian or Alaska Native; Black or African-American; Hispanic / Latino race/ethnicity groups
2) Individual URM groups, Native Hawaiian Pacific Islander, Two or More Races, and Other race/ethnicity categories left off this chart due to relatively low numbers

Degrees Conferred

by Gender

Management_Information_Systems_MS [20FS9890MS]

AY2011-12 through 2015-16

Academic Year	Total	Male		Female		Not Reported
		Count	%	Count	%	
2012 - 2013	70	46	65.7	24	34.3	0
2013 - 2014	68	48	70.6	20	29.4	0
2014 - 2015	99	63	63.6	36	36.4	0
2015 - 2016	129	99	76.7	30	23.3	0
2016 - 2017	136	95	69.9	41	30.1	0

