

Matriculation

Diversity Pipeline

Master Business Administration Masters

Fall 2013 - Fall 2017

	Fall Semester Year	Applied					Admitted				Non-URM Admitted to Applied Yield %	URM Admitted to Applied Yield %	New Enrollment				Non-URM Enrolled to Admitted Yield %	URM Enrolled to Admitted Yield %	Total Enrollment						
		Grand Total	Non-URM Total		URM Total		Grand Total	Non-URM Total		URM Total			Grand Total	Non-URM Total		URM Total			Grand Total	Non-URM Total		URM Total			
			Count	%	Count	%		Count	%	Count				%	Count	%				Count	%	Count	%	Count	%
All	2013	261	216	82.8%	45	17.2%	131	113	86.3%	18	13.7%	52.3%	40.0%	88	72	81.8%	16	18.2%	63.7%	88.9%	254	215	84.6%	39	15.4%
	2014	232	196	84.5%	36	15.5%	121	108	89.3%	13	10.7%	55.1%	36.1%	70	61	87.1%	9	12.9%	56.5%	69.2%	256	212	82.8%	44	17.2%
	2015	271	229	84.5%	42	15.5%	121	110	90.9%	11	9.1%	48.0%	26.2%	72	65	90.3%	7	9.7%	59.1%	63.6%	285	245	86.0%	40	14.0%
	2016	233	196	84.1%	37	15.9%	128	114	89.1%	14	10.9%	58.2%	37.8%	70	63	90.0%	7	10.0%	55.3%	50.0%	246	211	85.8%	35	14.2%
	2017	210	162	77.1%	48	22.9%	109	89	81.7%	20	18.3%	54.9%	41.7%	77	61	79.2%	16	20.8%	68.5%	80.0%	257	208	80.9%	49	19.1%
	Average	241	200	82.8%	42	17.2%	122	107	87.5%	15	12.5%	53.5%	36.5%	75	64	85.4%	11	14.6%	60.3%	72.4%	260	218	84.1%	41	15.9%
Masters & IBHE Certificate	2013	261	216	82.8%	45	17.2%	131	113	86.3%	18	13.7%	52.3%	40.0%	88	72	81.8%	16	18.2%	63.7%	88.9%	254	215	84.6%	39	15.4%
	2014	232	196	84.5%	36	15.5%	121	108	89.3%	13	10.7%	55.1%	36.1%	70	61	87.1%	9	12.9%	56.5%	69.2%	256	212	82.8%	44	17.2%
	2015	271	229	84.5%	42	15.5%	121	110	90.9%	11	9.1%	48.0%	26.2%	72	65	90.3%	7	9.7%	59.1%	63.6%	285	245	86.0%	40	14.0%
	2016	233	196	84.1%	37	15.9%	128	114	89.1%	14	10.9%	58.2%	37.8%	70	63	90.0%	7	10.0%	55.3%	50.0%	246	211	85.8%	35	14.2%
	2017	210	162	77.1%	48	22.9%	109	89	81.7%	20	18.3%	54.9%	41.7%	77	61	79.2%	16	20.8%	68.5%	80.0%	257	208	80.9%	49	19.1%
	Average	241	200	82.8%	42	17.2%	122	107	87.5%	15	12.5%	53.5%	36.5%	75	64	85.4%	11	14.6%	60.3%	72.4%	260	218	84.1%	41	15.9%
Doctorate	2013	0	0	0.0%	0	0.0%	0	0	0.0%	0	0.0%	0.0%	0.0%	0	0	0.0%	0	0.0%	0.0%	0.0%	0	0	0.0%	0	0.0%
	2014	0	0	0.0%	0	0.0%	0	0	0.0%	0	0.0%	0.0%	0.0%	0	0	0.0%	0	0.0%	0.0%	0.0%	0	0	0.0%	0	0.0%
	2015	0	0	0.0%	0	0.0%	0	0	0.0%	0	0.0%	0.0%	0.0%	0	0	0.0%	0	0.0%	0.0%	0.0%	0	0	0.0%	0	0.0%
	2016	0	0	0.0%	0	0.0%	0	0	0.0%	0	0.0%	0.0%	0.0%	0	0	0.0%	0	0.0%	0.0%	0.0%	0	0	0.0%	0	0.0%
	2017	0	0	0.0%	0	0.0%	0	0	0.0%	0	0.0%	0.0%	0.0%	0	0	0.0%	0	0.0%	0.0%	0.0%	0	0	0.0%	0	0.0%
	Average	0	0	0.0%	0	0.0%	0	0	0.0%	0	0.0%	0.0%	0.0%	0	0	0.0%	0	0.0%	0.0%	0.0%	0	0	0.0%	0	0.0%
Non-Degree & Campus Certificate	2013	0	0	0.0%	0	0.0%	0	0	0.0%	0	0.0%	0.0%	0.0%	0	0	0.0%	0	0.0%	0.0%	0.0%	0	0	0.0%	0	0.0%
	2014	0	0	0.0%	0	0.0%	0	0	0.0%	0	0.0%	0.0%	0.0%	0	0	0.0%	0	0.0%	0.0%	0.0%	0	0	0.0%	0	0.0%
	2015	0	0	0.0%	0	0.0%	0	0	0.0%	0	0.0%	0.0%	0.0%	0	0	0.0%	0	0.0%	0.0%	0.0%	0	0	0.0%	0	0.0%
	2016	0	0	0.0%	0	0.0%	0	0	0.0%	0	0.0%	0.0%	0.0%	0	0	0.0%	0	0.0%	0.0%	0.0%	0	0	0.0%	0	0.0%
	2017	0	0	0.0%	0	0.0%	0	0	0.0%	0	0.0%	0.0%	0.0%	0	0	0.0%	0	0.0%	0.0%	0.0%	0	0	0.0%	0	0.0%
	Average	0	0	0.0%	0	0.0%	0	0	0.0%	0	0.0%	0.0%	0.0%	0	0	0.0%	0	0.0%	0.0%	0.0%	0	0	0.0%	0	0.0%

Note: URM stands for Under-Represented Minority and includes American Indian or Alaska Native; Black or African-American; Hispanic / Latino race/ethnicity groups

Applications - Total

by Race/Ethnicity

Master Business Administration Masters

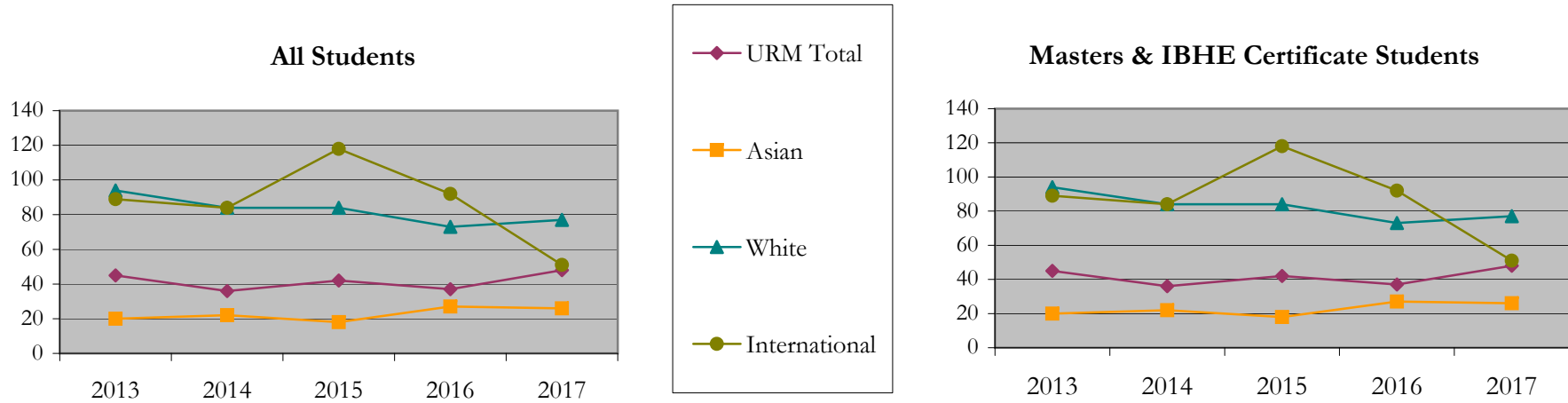
Fall 2013 - Fall 2017

		Total	Under Represented Minorities (URM)																Not Reported		
			American Indian or Alaska Native		Black or African American		Hispanic / Latino		URM Total		Asian		Native Hawaiian or Pacific Islander		White		Two or More Races			International	
			Count	%	Count	%	Count	%	Count	%	Count	%	Count	%	Count	%	Count	%		Count	%
All	2013	261	0	0.0	22	8.4	23	8.8	45	17.2	20	7.7	0	0.0	94	36.0	5	1.9	89	34.1	8
	2014	233	0	0.0	18	7.7	18	7.7	36	15.5	22	9.4	0	0.0	84	36.1	1	0.4	84	36.1	6
	2015	271	0	0.0	22	8.1	20	7.4	42	15.5	18	6.6	0	0.0	84	31.0	7	2.6	118	43.5	2
	2016	233	0	0.0	21	9.0	16	6.9	37	15.9	27	11.6	0	0.0	73	31.3	2	0.9	92	39.5	2
	2017	210	0	0.0	21	10.0	27	12.9	48	22.9	26	12.4	1	0.5	77	36.7	1	0.5	51	24.3	6
Masters & IBHE Certificate	2013	261	0	0.0	22	8.4	23	8.8	45	17.2	20	7.7	0	0.0	94	36.0	5	1.9	89	34.1	8
	2014	233	0	0.0	18	7.7	18	7.7	36	15.5	22	9.4	0	0.0	84	36.1	1	0.4	84	36.1	6
	2015	271	0	0.0	22	8.1	20	7.4	42	15.5	18	6.6	0	0.0	84	31.0	7	2.6	118	43.5	2
	2016	233	0	0.0	21	9.0	16	6.9	37	15.9	27	11.6	0	0.0	73	31.3	2	0.9	92	39.5	2
	2017	210	0	0.0	21	10.0	27	12.9	48	22.9	26	12.4	1	0.5	77	36.7	1	0.5	51	24.3	6
Doctorate	2013	0	0	0.0	0	0.0	0	0.0	0	0.0	0	0.0	0	0.0	0	0.0	0	0.0	0	0.0	0
	2014	0	0	0.0	0	0.0	0	0.0	0	0.0	0	0.0	0	0.0	0	0.0	0	0.0	0	0.0	0
	2015	0	0	0.0	0	0.0	0	0.0	0	0.0	0	0.0	0	0.0	0	0.0	0	0.0	0	0.0	0
	2016	0	0	0.0	0	0.0	0	0.0	0	0.0	0	0.0	0	0.0	0	0.0	0	0.0	0	0.0	0
	2017	0	0	0.0	0	0.0	0	0.0	0	0.0	0	0.0	0	0.0	0	0.0	0	0.0	0	0.0	0
Non-Degree & Campus Certificate	2013	0	0	0.0	0	0.0	0	0.0	0	0.0	0	0.0	0	0.0	0	0.0	0	0.0	0	0.0	0
	2014	0	0	0.0	0	0.0	0	0.0	0	0.0	0	0.0	0	0.0	0	0.0	0	0.0	0	0.0	0
	2015	0	0	0.0	0	0.0	0	0.0	0	0.0	0	0.0	0	0.0	0	0.0	0	0.0	0	0.0	0
	2016	0	0	0.0	0	0.0	0	0.0	0	0.0	0	0.0	0	0.0	0	0.0	0	0.0	0	0.0	0
	2017	0	0	0.0	0	0.0	0	0.0	0	0.0	0	0.0	0	0.0	0	0.0	0	0.0	0	0.0	0

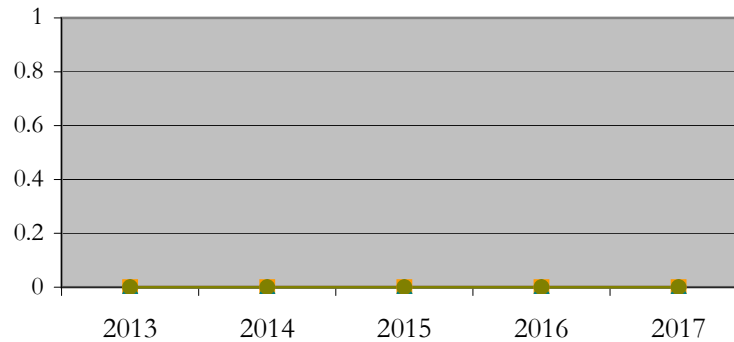
Note: URM stands for Under-Represented Minority and includes American Indian or Alaska Native; Black or African-American; Hispanic / Latino race/ethnicity groups

Applications - Total by Race/Ethnicity

Master Business Administration Masters
Fall 2013 - Fall 2017



Doctorate Students



Notes: 1) URM stands for Under-Represented Minority and includes American Indian or Alaska Native; Black or African-American; Hispanic / Latino race/ethnicity groups
2) Individual URM groups, Native Hawaiian Pacific Islander, Two or More Races, and Other race/ethnicity categories left off this charts due to relatively low numbers

Applications - Admitted

by Race/Ethnicity

Master Business Administration Masters

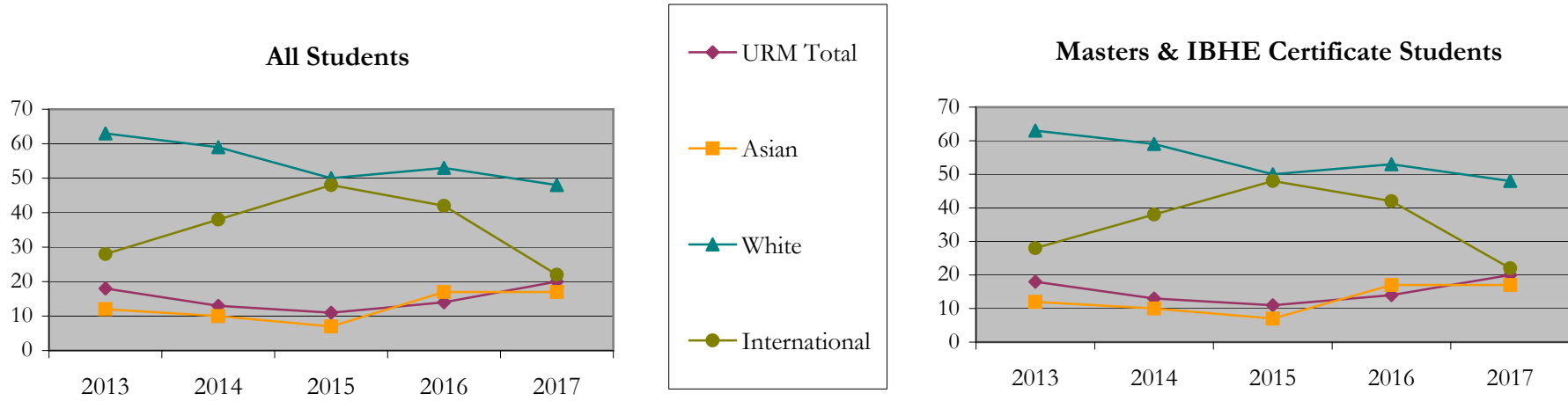
Fall 2013 - Fall 2017

		Total	Under Represented Minorities (URM)										Asian		Native Hawaiian or Pacific Islander		White		Two or More Races		International		Not Reported
			American Indian or Alaska Native		Black or African American		Hispanic / Latino		URM Total		Count	%	Count	%	Count	%	Count	%	Count	%	Count	%	
			Count	%	Count	%	Count	%	Count	%													Count
All	2013	131	0	0.0	10	7.6	8	6.1	18	13.7	12	9.2	0	0.0	63	48.1	3	2.3	28	21.4	7		
	2014	121	0	0.0	6	5.0	7	5.8	13	10.7	10	8.3	0	0.0	59	48.8	0	0.0	38	31.4	1		
	2015	121	0	0.0	4	3.3	7	5.8	11	9.1	7	5.8	0	0.0	50	41.3	5	4.1	48	39.7	0		
	2016	128	0	0.0	8	6.3	6	4.7	14	10.9	17	13.3	0	0.0	53	41.4	0	0.0	42	32.8	2		
	2017	109	0	0.0	7	6.4	13	11.9	20	18.3	17	15.6	1	0.9	48	44.0	0	0.0	22	20.2	1		
Masters & IBHE Certificate	2013	131	0	0.0	10	7.6	8	6.1	18	13.7	12	9.2	0	0.0	63	48.1	3	2.3	28	21.4	7		
	2014	121	0	0.0	6	5.0	7	5.8	13	10.7	10	8.3	0	0.0	59	48.8	0	0.0	38	31.4	1		
	2015	121	0	0.0	4	3.3	7	5.8	11	9.1	7	5.8	0	0.0	50	41.3	5	4.1	48	39.7	0		
	2016	128	0	0.0	8	6.3	6	4.7	14	10.9	17	13.3	0	0.0	53	41.4	0	0.0	42	32.8	2		
	2017	109	0	0.0	7	6.4	13	11.9	20	18.3	17	15.6	1	0.9	48	44.0	0	0.0	22	20.2	1		
Doctorate	2013	0	0	0.0	0	0.0	0	0.0	0	0.0	0	0.0	0	0.0	0	0.0	0	0.0	0	0.0	0		
	2014	0	0	0.0	0	0.0	0	0.0	0	0.0	0	0.0	0	0.0	0	0.0	0	0.0	0	0.0	0		
	2015	0	0	0.0	0	0.0	0	0.0	0	0.0	0	0.0	0	0.0	0	0.0	0	0.0	0	0.0	0		
	2016	0	0	0.0	0	0.0	0	0.0	0	0.0	0	0.0	0	0.0	0	0.0	0	0.0	0	0.0	0		
	2017	0	0	0.0	0	0.0	0	0.0	0	0.0	0	0.0	0	0.0	0	0.0	0	0.0	0	0.0	0		
Non-Degree & Campus Certificate	2013	0	0	0.0	0	0.0	0	0.0	0	0.0	0	0.0	0	0.0	0	0.0	0	0.0	0	0.0	0		
	2014	0	0	0.0	0	0.0	0	0.0	0	0.0	0	0.0	0	0.0	0	0.0	0	0.0	0	0.0	0		
	2015	0	0	0.0	0	0.0	0	0.0	0	0.0	0	0.0	0	0.0	0	0.0	0	0.0	0	0.0	0		
	2016	0	0	0.0	0	0.0	0	0.0	0	0.0	0	0.0	0	0.0	0	0.0	0	0.0	0	0.0	0		
	2017	0	0	0.0	0	0.0	0	0.0	0	0.0	0	0.0	0	0.0	0	0.0	0	0.0	0	0.0	0		

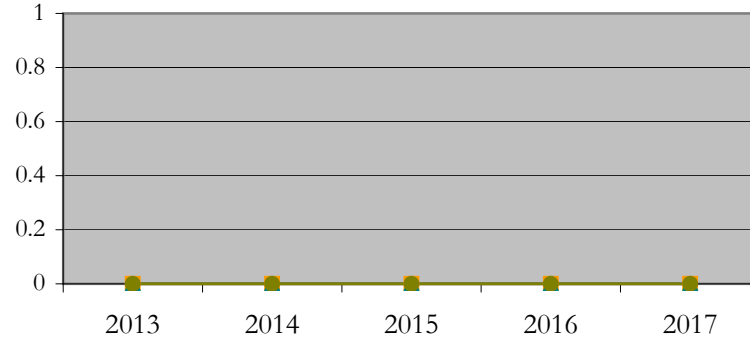
Note: URM stands for Under-Represented Minority and includes American Indian or Alaska Native; Black or African-American; Hispanic / Latino race/ethnicity groups

Applications - Admitted by Race/Ethnicity

Master Business Administration Masters
Fall 2013 - Fall 2017



Doctorate Students



Notes: 1) URM stands for Under-Represented Minority and includes American Indian or Alaska Native; Black or African-American; Hispanic / Latino race/ethnicity groups
 2) Individual URM groups, Native Hawaiian Pacific Islander, Two or More Races, and Other race/ethnicity categories left off this charts due to relatively low numbers

**Enrollment - New
by Race/Ethnicity**

Master Business Administration Masters

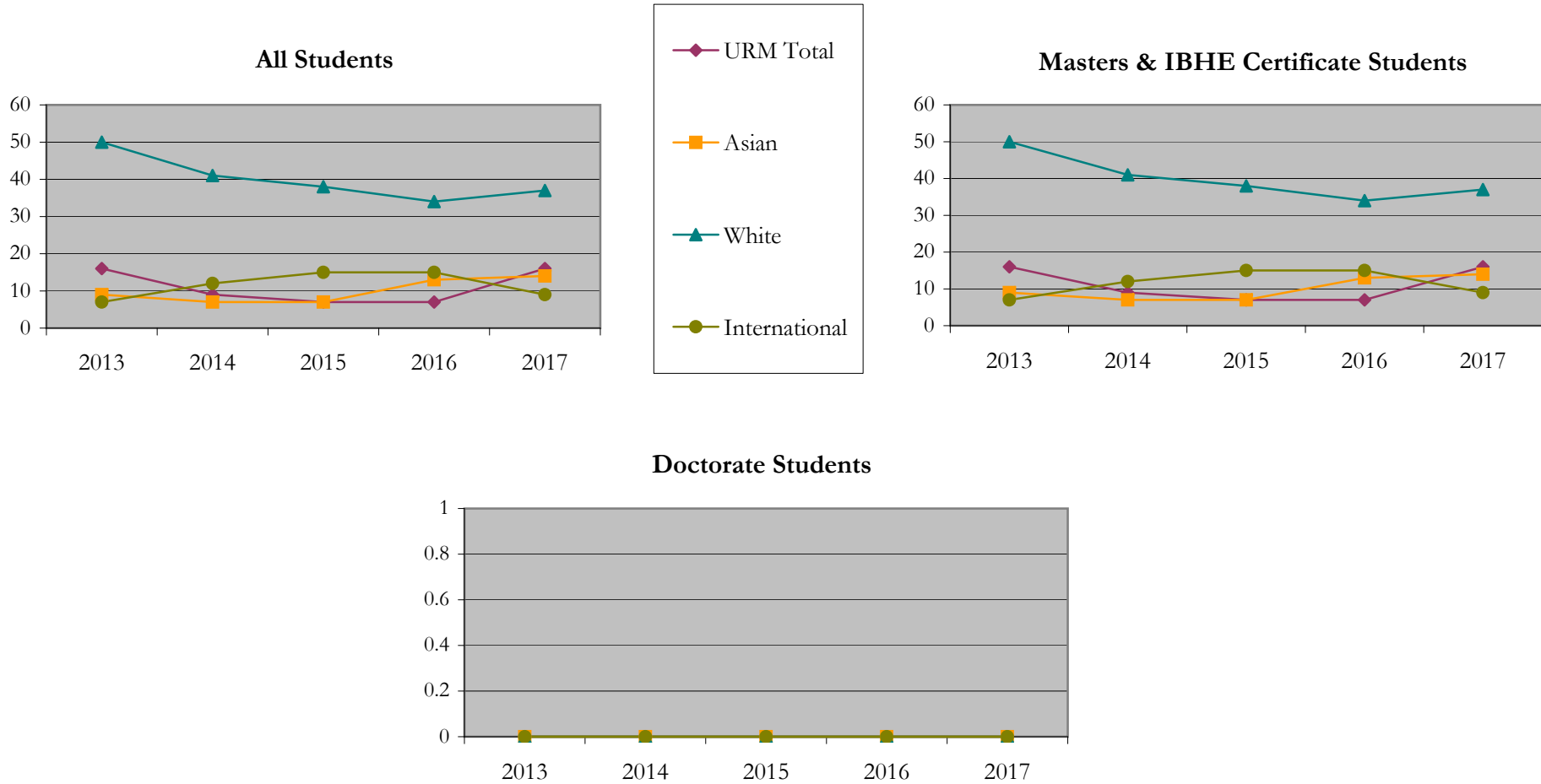
Fall 2013 - Fall 2017

		Total	Under Represented Minorities (URM)								Asian		Native Hawaiian or Pacific Islander		White		Two or More Races		International		Not Reported
			American Indian or Alaska Native		Black or African American		Hispanic / Latino		URM Total												
			Count	%	Count	%	Count	%	Count	%											
All	2013	88	0	0.0	9	10.2	7	8.0	16	18.2	9	10.2	0	0.0	50	56.8	1	1.1	7	8.0	5
	2014	70	0	0.0	4	5.7	5	7.1	9	12.9	7	10.0	0	0.0	41	58.6	0	0.0	12	17.1	1
	2015	72	0	0.0	2	2.8	5	6.9	7	9.7	7	9.7	0	0.0	38	52.8	5	6.9	15	20.8	0
	2016	70	0	0.0	4	5.7	3	4.3	7	10.0	13	18.6	0	0.0	34	48.6	0	0.0	15	21.4	1
	2017	77	0	0.0	5	6.5	11	14.3	16	20.8	14	18.2	1	1.3	37	48.1	0	0.0	9	11.7	0
Masters & IBHE Certificate	2013	88	0	0.0	9	10.2	7	8.0	16	18.2	9	10.2	0	0.0	50	56.8	1	1.1	7	8.0	5
	2014	70	0	0.0	4	5.7	5	7.1	9	12.9	7	10.0	0	0.0	41	58.6	0	0.0	12	17.1	1
	2015	72	0	0.0	2	2.8	5	6.9	7	9.7	7	9.7	0	0.0	38	52.8	5	6.9	15	20.8	0
	2016	70	0	0.0	4	5.7	3	4.3	7	10.0	13	18.6	0	0.0	34	48.6	0	0.0	15	21.4	1
	2017	77	0	0.0	5	6.5	11	14.3	16	20.8	14	18.2	1	1.3	37	48.1	0	0.0	9	11.7	0
Doctorate	2013	0	0	0.0	0	0.0	0	0.0	0	0.0	0	0.0	0	0.0	0	0.0	0	0.0	0	0.0	0
	2014	0	0	0.0	0	0.0	0	0.0	0	0.0	0	0.0	0	0.0	0	0.0	0	0.0	0	0.0	0
	2015	0	0	0.0	0	0.0	0	0.0	0	0.0	0	0.0	0	0.0	0	0.0	0	0.0	0	0.0	0
	2016	0	0	0.0	0	0.0	0	0.0	0	0.0	0	0.0	0	0.0	0	0.0	0	0.0	0	0.0	0
	2017	0	0	0.0	0	0.0	0	0.0	0	0.0	0	0.0	0	0.0	0	0.0	0	0.0	0	0.0	0
Non-Degree & Campus Certificate	2013	0	0	0.0	0	0.0	0	0.0	0	0.0	0	0.0	0	0.0	0	0.0	0	0.0	0	0.0	0
	2014	0	0	0.0	0	0.0	0	0.0	0	0.0	0	0.0	0	0.0	0	0.0	0	0.0	0	0.0	0
	2015	0	0	0.0	0	0.0	0	0.0	0	0.0	0	0.0	0	0.0	0	0.0	0	0.0	0	0.0	0
	2016	0	0	0.0	0	0.0	0	0.0	0	0.0	0	0.0	0	0.0	0	0.0	0	0.0	0	0.0	0
	2017	0	0	0.0	0	0.0	0	0.0	0	0.0	0	0.0	0	0.0	0	0.0	0	0.0	0	0.0	0

Note: URM stands for Under-Represented Minority and includes American Indian or Alaska Native; Black or African-American; Hispanic / Latino race/ethnicity groups

Enrollment - New by Race/Ethnicity

Master Business Administration Masters
Fall 2013 - Fall 2017



Notes: 1) URM stands for Under-Represented Minority and includes American Indian or Alaska Native; Black or African-American; Hispanic / Latino race/ethnicity groups
2) Individual URM groups, Native Hawaiian Pacific Islander, Two or More Races, and Other race/ethnicity categories left off this charts due to relatively low numbers

**Enrollment - Total
by Race/Ethnicity**

Master Business Administration Masters

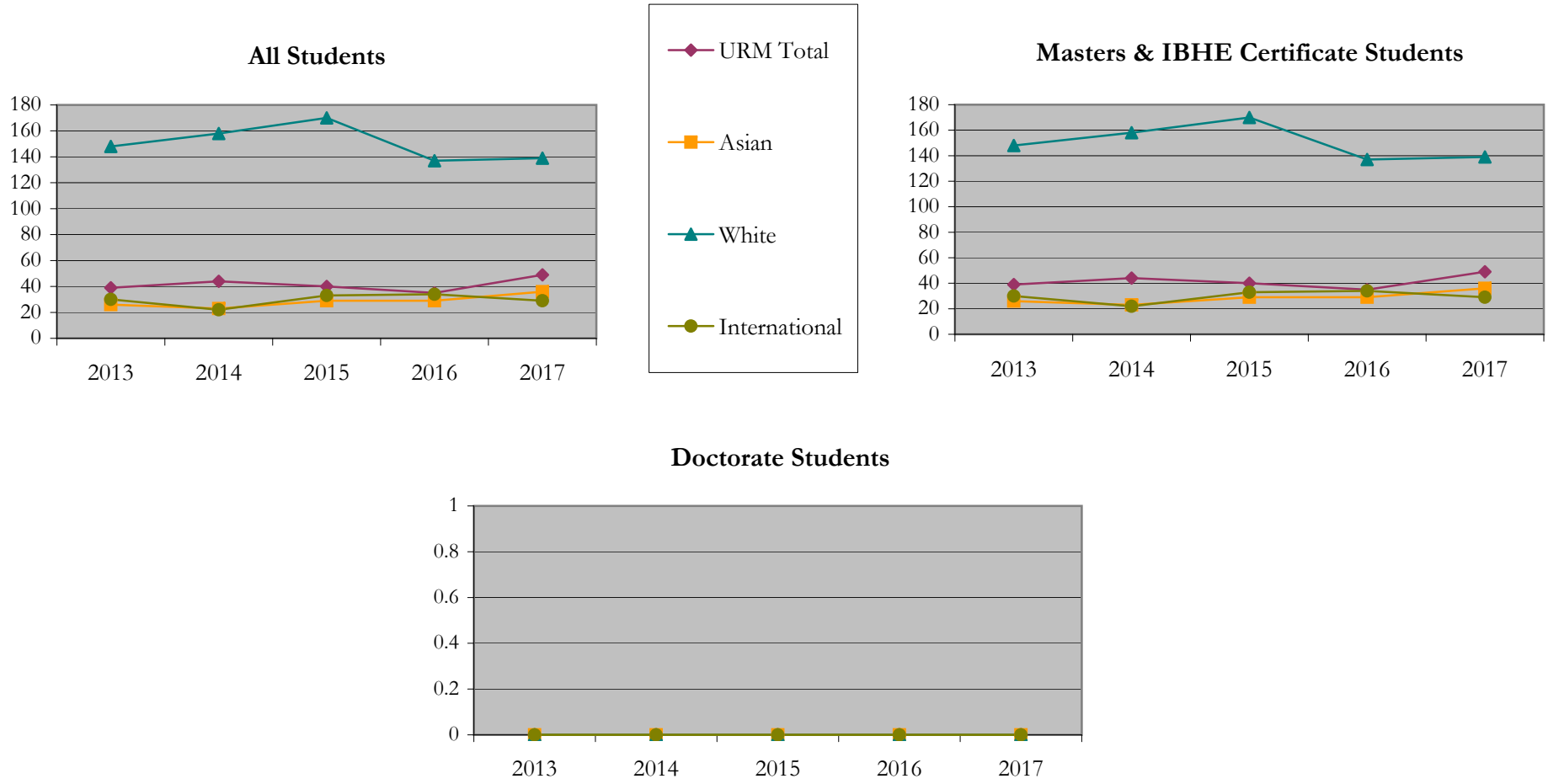
Fall 2013 - Fall 2017

		Total	Under Represented Minorities (URM)								Asian		Native Hawaiian or Pacific Islander		White		Two or More Races		International		Not Reported
			American Indian or Alaska Native		Black or African American		Hispanic / Latino		URM Total												
			Count	%	Count	%	Count	%	Count	%											
All	2013	254	0	0.0	20	7.9	19	7.5	39	15.4	26	10.2	0	0.0	148	58.3	2	0.8	30	11.8	9
	2014	256	0	0.0	20	7.8	24	9.4	44	17.2	23	9.0	0	0.0	158	61.7	1	0.4	22	8.6	8
	2015	285	0	0.0	15	5.3	25	8.8	40	14.0	29	10.2	0	0.0	170	59.6	7	2.5	33	11.6	6
	2016	246	0	0.0	14	5.7	21	8.5	35	14.2	29	11.8	0	0.0	137	55.7	6	2.4	34	13.8	5
	2017	257	0	0.0	18	7.0	31	12.1	49	19.1	36	14.0	1	0.4	139	54.1	2	0.8	29	11.3	1
Masters & IBHE Certificate	2013	254	0	0.0	20	7.9	19	7.5	39	15.4	26	10.2	0	0.0	148	58.3	2	0.8	30	11.8	9
	2014	256	0	0.0	20	7.8	24	9.4	44	17.2	23	9.0	0	0.0	158	61.7	1	0.4	22	8.6	8
	2015	285	0	0.0	15	5.3	25	8.8	40	14.0	29	10.2	0	0.0	170	59.6	7	2.5	33	11.6	6
	2016	246	0	0.0	14	5.7	21	8.5	35	14.2	29	11.8	0	0.0	137	55.7	6	2.4	34	13.8	5
	2017	257	0	0.0	18	7.0	31	12.1	49	19.1	36	14.0	1	0.4	139	54.1	2	0.8	29	11.3	1
Doctorate	2013	0	0	0.0	0	0.0	0	0.0	0	0.0	0	0.0	0	0.0	0	0.0	0	0.0	0	0.0	0
	2014	0	0	0.0	0	0.0	0	0.0	0	0.0	0	0.0	0	0.0	0	0.0	0	0.0	0	0.0	0
	2015	0	0	0.0	0	0.0	0	0.0	0	0.0	0	0.0	0	0.0	0	0.0	0	0.0	0	0.0	0
	2016	0	0	0.0	0	0.0	0	0.0	0	0.0	0	0.0	0	0.0	0	0.0	0	0.0	0	0.0	0
	2017	0	0	0.0	0	0.0	0	0.0	0	0.0	0	0.0	0	0.0	0	0.0	0	0.0	0	0.0	0
Non-Degree & Campus Certificate	2013	0	0	0.0	0	0.0	0	0.0	0	0.0	0	0.0	0	0.0	0	0.0	0	0.0	0	0.0	0
	2014	0	0	0.0	0	0.0	0	0.0	0	0.0	0	0.0	0	0.0	0	0.0	0	0.0	0	0.0	0
	2015	0	0	0.0	0	0.0	0	0.0	0	0.0	0	0.0	0	0.0	0	0.0	0	0.0	0	0.0	0
	2016	0	0	0.0	0	0.0	0	0.0	0	0.0	0	0.0	0	0.0	0	0.0	0	0.0	0	0.0	0
	2017	0	0	0.0	0	0.0	0	0.0	0	0.0	0	0.0	0	0.0	0	0.0	0	0.0	0	0.0	0

Note: URM stands for Under-Represented Minority and includes American Indian or Alaska Native; Black or African-American; Hispanic / Latino race/ethnicity groups

Enrollment - Total by Race/Ethnicity

Master Business Administration Masters
Fall 2013 - Fall 2017



Notes: 1) URM stands for Under-Represented Minority and includes American Indian or Alaska Native; Black or African-American; Hispanic / Latino race/ethnicity groups
2) Individual URM groups, Native Hawaiian Pacific Islander, Two or More Races, and Other race/ethnicity categories left off this charts due to relatively low numbers

Enrollment

by Student Type, Enrollment Time, and Gender

Master Business Administration Masters

Fall 2013 - Fall 2017

		Total	New		Continuing		Male		Female		Gender Not Reported	Part-time		Full-time	
			Count	%	Count	%	Count	%	Count	%		Count	%	Count	%
All	2013	254	88	34.6	166	65.4	151	59.4	103	40.6	0	141	55.5	113	44.5
	2014	256	70	27.3	186	72.7	160	62.5	96	37.5	0	141	55.1	115	44.9
	2015	285	72	25.3	213	74.7	178	62.5	107	37.5	0	151	53.0	134	47.0
	2016	246	70	28.5	176	71.5	144	58.5	102	41.5	0	142	57.7	104	42.3
	2017	257	77	30.0	180	70.0	162	63.0	95	37.0	0	146	56.8	111	43.2
Masters & IBHE Certificate	2013	254	88	34.6	166	65.4	151	59.4	103	40.6	0	141	55.5	113	44.5
	2014	256	70	27.3	186	72.7	160	62.5	96	37.5	0	141	55.1	115	44.9
	2015	285	72	25.3	213	74.7	178	62.5	107	37.5	0	151	53.0	134	47.0
	2016	246	70	28.5	176	71.5	144	58.5	102	41.5	0	142	57.7	104	42.3
	2017	257	77	30.0	180	70.0	162	63.0	95	37.0	0	146	56.8	111	43.2
Doctorate	2013	0	0	0.0	0	0.0	0	0.0	0	0.0	0	0	0.0	0	0.0
	2014	0	0	0.0	0	0.0	0	0.0	0	0.0	0	0	0.0	0	0.0
	2015	0	0	0.0	0	0.0	0	0.0	0	0.0	0	0	0.0	0	0.0
	2016	0	0	0.0	0	0.0	0	0.0	0	0.0	0	0	0.0	0	0.0
	2017	0	0	0.0	0	0.0	0	0.0	0	0.0	0	0	0.0	0	0.0
Non-Degree & Campus Certificate	2013	0	0	0.0	0	0.0	0	0.0	0	0.0	0	0	0.0	0	0.0
	2014	0	0	0.0	0	0.0	0	0.0	0	0.0	0	0	0.0	0	0.0
	2015	0	0	0.0	0	0.0	0	0.0	0	0.0	0	0	0.0	0	0.0
	2016	0	0	0.0	0	0.0	0	0.0	0	0.0	0	0	0.0	0	0.0
	2017	0	0	0.0	0	0.0	0	0.0	0	0.0	0	0	0.0	0	0.0

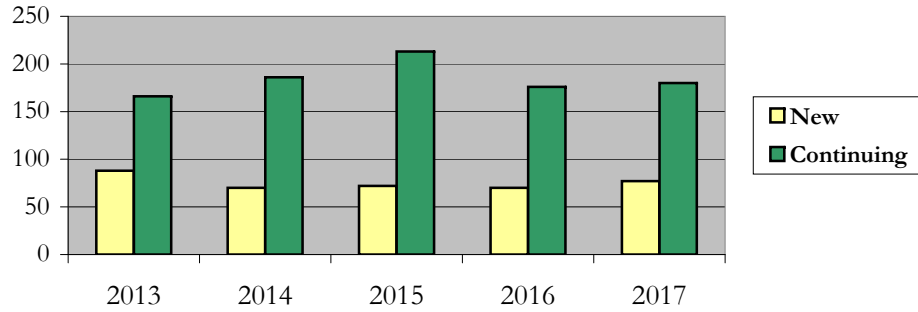
Enrollment

by Student Type, Enrollment Time, and Gender (All Students)

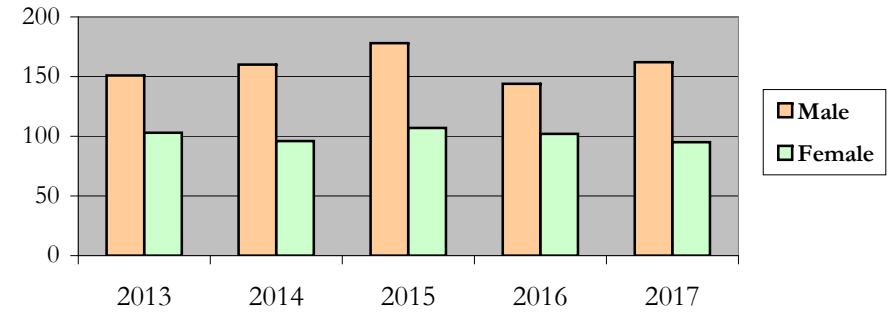
Master Business Administration Masters

Fall 2013 - Fall 2017

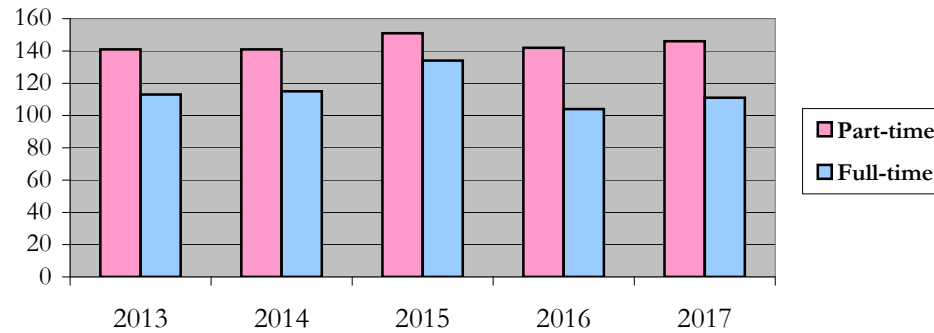
New and Continuing Enrollment



Enrollment by Gender



Enrollment by Student Enrollment Time



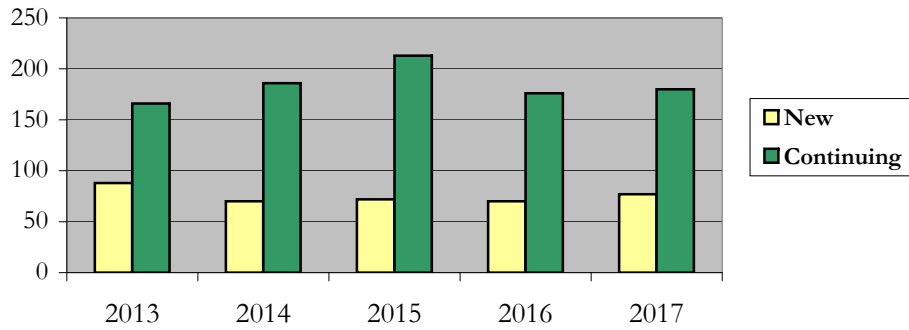
Enrollment

by Student Type, Enrollment Time, and Gender (Master's Students)

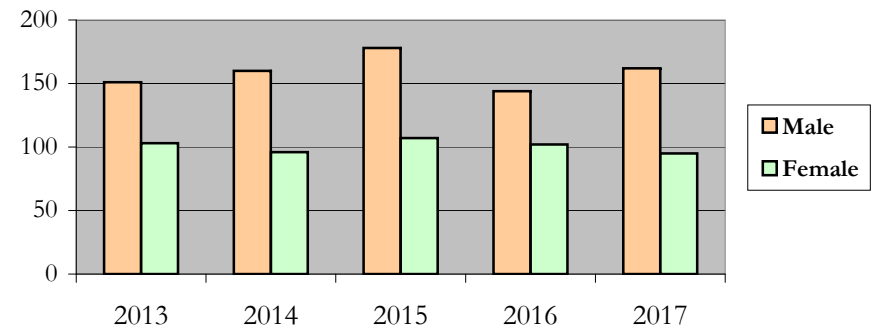
Master Business Administration Masters

Fall 2013 - Fall 2017

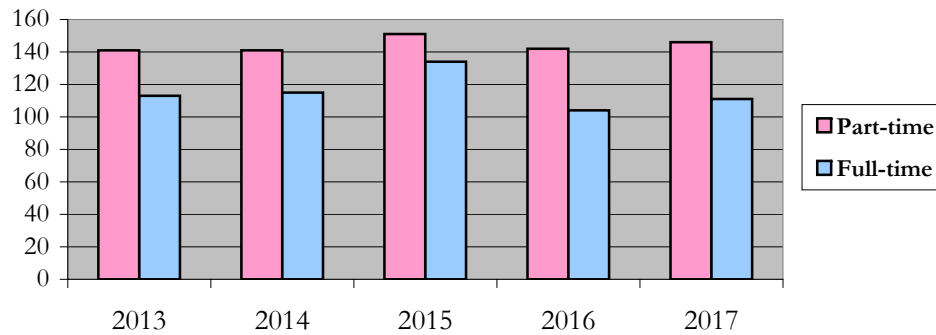
New and Continuing Enrollment



Enrollment by Gender



Enrollment by Student Enrollment Time



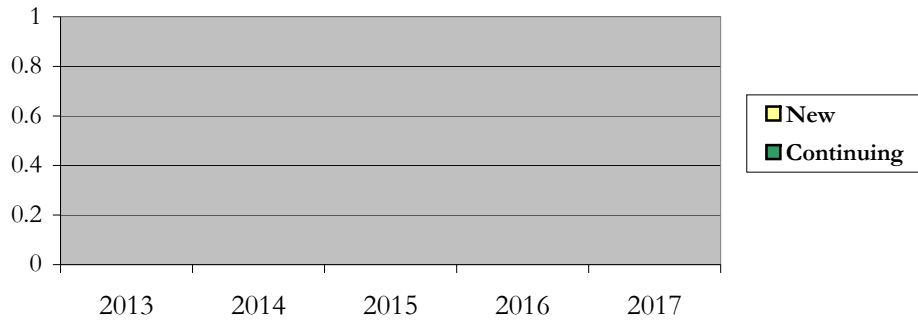
Enrollment

by Student Type, Enrollment Time, and Gender (Doctorate Students)

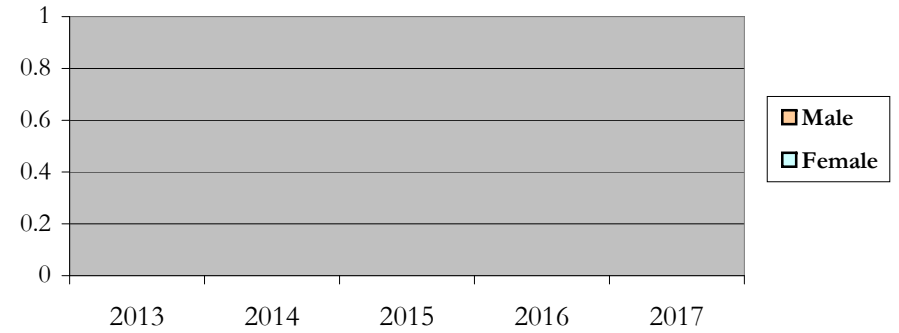
Master Business Administration Masters

Fall 2013 - Fall 2017

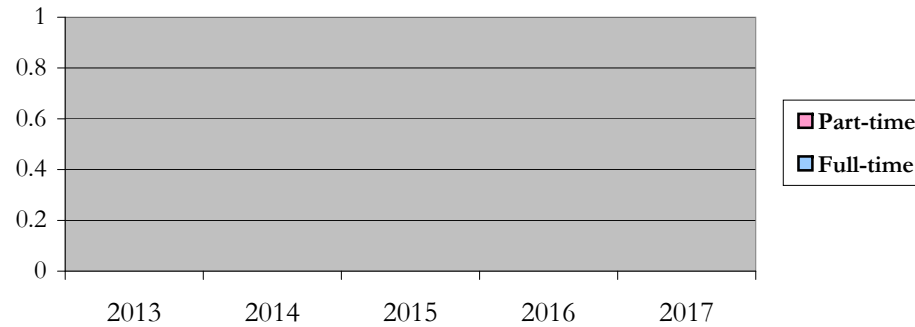
New and Continuing Enrollment



Enrollment by Gender



Enrollment by Student Enrollment Time



Degrees Conferred by Race/Ethnicity

Master Business Administration Masters

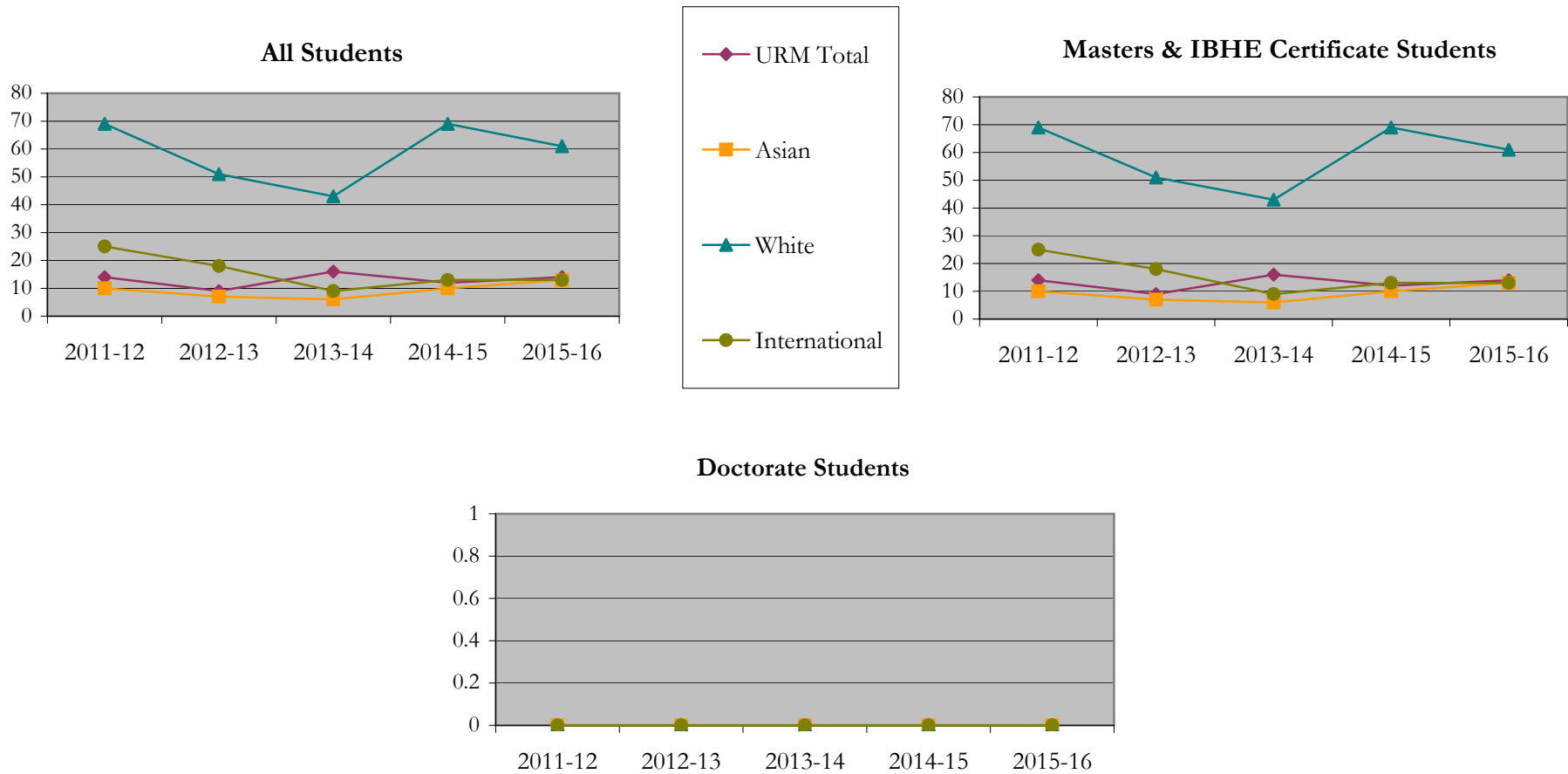
Fall 2013 - Fall 2017

		Total	Under Represented Minorities (URM)								Asian	Native Hawaiian or Pacific Islander		White		Two or More Races		International		Not Reported	
			American Indian or Alaska Native		Black or African American		Hispanic / Latino		URM Total			Count	%	Count	%	Count	%	Count	%	Count	%
			Count	%	Count	%	Count	%	Count	%											
All	2012 - 13	122	0	0.0	9	7.4	5	4.1	14	11.5	10	8.2	0	0.0	69	56.6	1	0.8	25	20.5	3
	2013 - 14	89	0	0.0	4	4.5	5	5.6	9	10.1	7	7.9	0	0.0	51	57.3	2	2.2	18	20.2	2
	2014 - 15	77	0	0.0	10	13.0	6	7.8	16	20.8	6	7.8	0	0.0	43	55.8	0	0.0	9	11.7	3
	2015 - 16	108	0	0.0	5	4.6	7	6.5	12	11.1	10	9.3	0	0.0	69	63.9	1	0.9	13	12.0	3
	2016 - 17	106	0	0.0	4	3.8	10	9.4	14	13.2	13	12.3	0	0.0	61	57.5	3	2.8	13	12.3	2
Masters & IBHE Certificate	2012 - 13	122	0	0.0	9	7.4	5	4.1	14	11.5	10	8.2	0	0.0	69	56.6	1	0.8	25	20.5	3
	2013 - 14	89	0	0.0	4	4.5	5	5.6	9	10.1	7	7.9	0	0.0	51	57.3	2	2.2	18	20.2	2
	2014 - 15	77	0	0.0	10	13.0	6	7.8	16	20.8	6	7.8	0	0.0	43	55.8	0	0.0	9	11.7	3
	2015 - 16	108	0	0.0	5	4.6	7	6.5	12	11.1	10	9.3	0	0.0	69	63.9	1	0.9	13	12.0	3
	2016 - 17	106	0	0.0	4	3.8	10	9.4	14	13.2	13	12.3	0	0.0	61	57.5	3	2.8	13	12.3	2
Doctorate	2012 - 13	0	0	0.0	0	0.0	0	0.0	0	0.0	0	0.0	0	0.0	0	0.0	0	0.0	0	0.0	0
	2013 - 14	0	0	0.0	0	0.0	0	0.0	0	0.0	0	0.0	0	0.0	0	0.0	0	0.0	0	0.0	0
	2014 - 15	0	0	0.0	0	0.0	0	0.0	0	0.0	0	0.0	0	0.0	0	0.0	0	0.0	0	0.0	0
	2015 - 16	0	0	0.0	0	0.0	0	0.0	0	0.0	0	0.0	0	0.0	0	0.0	0	0.0	0	0.0	0
	2016 - 17	0	0	0.0	0	0.0	0	0.0	0	0.0	0	0.0	0	0.0	0	0.0	0	0.0	0	0.0	0
Non-Degree & Campus Certificate	2012 - 13	0	0	0.0	0	0.0	0	0.0	0	0.0	0	0.0	0	0.0	0	0.0	0	0.0	0	0.0	0
	2013 - 14	0	0	0.0	0	0.0	0	0.0	0	0.0	0	0.0	0	0.0	0	0.0	0	0.0	0	0.0	0
	2014 - 15	0	0	0.0	0	0.0	0	0.0	0	0.0	0	0.0	0	0.0	0	0.0	0	0.0	0	0.0	0
	2015 - 16	0	0	0.0	0	0.0	0	0.0	0	0.0	0	0.0	0	0.0	0	0.0	0	0.0	0	0.0	0
	2016 - 17	0	0	0.0	0	0.0	0	0.0	0	0.0	0	0.0	0	0.0	0	0.0	0	0.0	0	0.0	0

Note: Each row represents a fiscal year, beginning with Summer term and ending with Spring.

Degrees Conferred by Race/Ethnicity

Master Business Administration Masters
Fall 2013 - Fall 2017



Notes: 1) URM stands for Under-Represented Minority and includes American Indian or Alaska Native; Black or African-American; Hispanic / Latino race/ethnicity groups
2) Individual URM groups, Native Hawaiian Pacific Islander, Two or More Races, and Other race/ethnicity categories left off this charts due to relatively low numbers

Degrees Conferred
by Gender

Master Business Administration Masters

Fall 2013 - Fall 2017

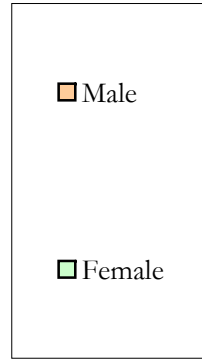
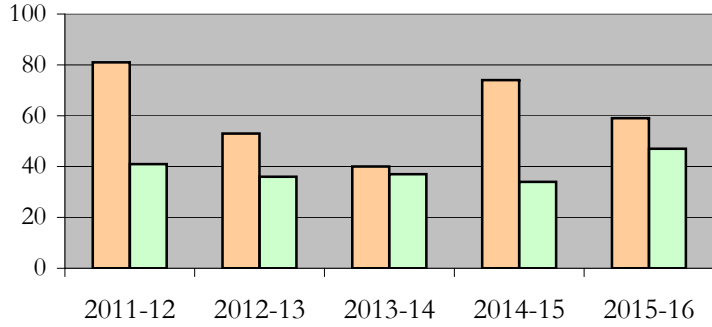
		Total	Male		Female		Not Reported
			Count	%	Count	%	
All	2012 - 13	122	81	66.4	41	33.6	0
	2013 - 14	89	53	59.6	36	40.4	0
	2014 - 15	77	40	51.9	37	48.1	0
	2015 - 16	108	74	68.5	34	31.5	0
	2016 - 17	106	59	55.7	47	44.3	0
Masters & IBHE Certificate	2012 - 13	122	81	66.4	41	33.6	0
	2013 - 14	89	53	59.6	36	40.4	0
	2014 - 15	77	40	51.9	37	48.1	0
	2015 - 16	108	74	68.5	34	31.5	0
	2016 - 17	106	59	55.7	47	44.3	0
Doctorate	2012 - 13	0	0	0.0	0	0.0	0
	2013 - 14	0	0	0.0	0	0.0	0
	2014 - 15	0	0	0.0	0	0.0	0
	2015 - 16	0	0	0.0	0	0.0	0
	2016 - 17	0	0	0.0	0	0.0	0
Campus Certificates	2012 - 13	0	0	0.0	0	0.0	0
	2013 - 14	0	0	0.0	0	0.0	0
	2014 - 15	0	0	0.0	0	0.0	0
	2015 - 16	0	0	0.0	0	0.0	0
	2016 - 17	0	0	0.0	0	0.0	0

Note: Each row represents a fiscal year, beginning with Summer term and ending with Spring.

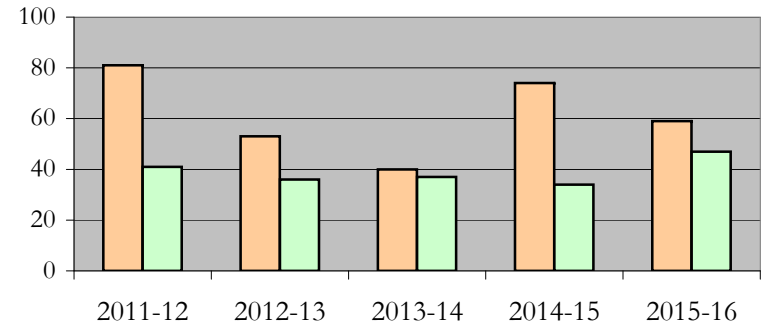
Degrees Conferred by Gender

Master Business Administration Masters
Fall 2013 - Fall 2017

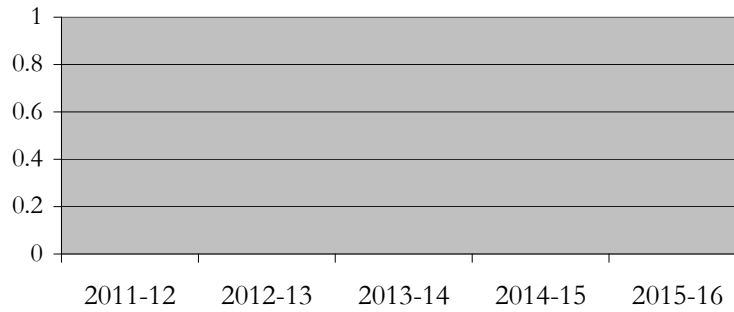
All Students



Masters & IBHE Certificate Students



Doctorate Students



Appendix A

Master Business Administration Masters

Fall 2013 - Fall 2017

List of program codes included in this document

20FL9875MBA

20FS9875MBA

Notes: 1) Program codes are sorted by alphabetical order in column-wise fashion

2) Program codes highlighted in yellow did not have applications, enrollment, nor degrees conferred in the covered period