

# Matriculation

## Diversity Pipeline

Accounting\_MS [20FS1000MS]

Fall 2013 through Fall 2017

Fall Semester Year	Applied					Admitted					Non-URM Admitted to Applied Yield %	URM Admitted to Applied Yield %	New Enrollment					Non-URM Enrolled to Admitted Yield %	URM Enrolled to Admitted Yield %	Total Enrollment				
	Grand Total	Non-URM Total		URM Total		Grand Total	Non-URM Total		URM Total				Grand Total	Non-URM Total		URM Total				Grand Total	Non-URM Total		URM Total	
		Count	%	Count	%		Count	%	Count	%				Count	%	Count	%				Count	%	Count	%
	Count	%	Count	%	Count	%	Count	%	Count	%			Count	%	Count	%	Count			%	Count	%	Count	%
2013	393	380	96.7%	13	3.3%	239	230	96.2%	9	3.8%	60.5%	69.2%	92	85	92.4%	7	7.6%	37.0%	77.8%	213	202	94.8%	11	5.2%
2014	275	261	94.9%	14	5.1%	162	157	96.9%	5	3.1%	60.2%	35.7%	61	56	91.8%	5	8.2%	35.7%	100.0%	152	138	90.8%	14	9.2%
2015	253	234	92.5%	19	7.5%	160	148	92.5%	12	7.5%	63.2%	63.2%	58	47	81.0%	11	19.0%	31.8%	91.7%	136	118	86.8%	18	13.2%
2016	201	193	96.0%	8	4.0%	128	125	97.7%	3	2.3%	64.8%	37.5%	38	37	97.4%	1	2.6%	29.6%	33.3%	108	97	89.8%	11	10.2%
2017	101	91	90.1%	10	9.9%	70	64	91.4%	6	8.6%	70.3%	60.0%	22	17	77.3%	5	22.7%	26.6%	83.3%	80	67	83.8%	13	16.3%
<b>Average</b>	<b>245</b>	<b>232</b>	<b>94.8%</b>	<b>13</b>	<b>5.2%</b>	<b>152</b>	<b>145</b>	<b>95.4%</b>	<b>7</b>	<b>4.6%</b>	<b>62.5%</b>	<b>54.7%</b>	<b>54</b>	<b>48</b>	<b>89.3%</b>	<b>6</b>	<b>10.7%</b>	<b>33.4%</b>	<b>82.9%</b>	<b>138</b>	<b>124</b>	<b>90.3%</b>	<b>13.4</b>	<b>9.7%</b>

**Note:** URM stands for Under-Represented Minority and includes American Indian or Alaska Native; Black or African-American; Hispanic / Latino race/ethnicity groups

# Applications, Admission, & New Enrollment Yields

## by Race/Ethnicity & Gender

Accounting\_MS [20FS1000MS]

Fall 2013 through Fall 2017

	Fall Semester Year	Total		Under Represented Minorities (URM)										Race/Eth Not Reported		Male		Female									
				American Indian or Alaska Native		Black or African American		Hispanic / Latino		URM Total		Asian								Native Hawaiian or Pacific Islander		White		Two or More Races		International	
		Count	% Yield	Count	% Yield	Count	% Yield	Count	% Yield	Count	% Yield	Count	% Yield	Count	% Yield	Count	% Yield	Count	% Yield	Count	% Yield	Count	% Yield	Count	% Yield		
Applied	2013	393		0		6		7		13		22		0		57		2		298		1		137		256	
	2014	275		0		7		7		14		24		0		40		3		192		2		93		182	
	2015	253		0		9		10		19		20		0		29		0		184		1		66		186	
	2016	201		0		1		7		8		18		0		27		0		148		0		55		145	
	2017	101		0		1		9		10		13		0		12		1		64		1		33		68	
Admitted	2013	239	60.8	0	0.0	3	50.0	6	85.7	9	69.2	16	72.7	0	0.0	52	91.2	1	50.0	160	53.7	1		83	60.6	156	60.9
	2014	162	58.9	0	0.0	2	28.6	3	42.9	5	35.7	17	70.8	0	0.0	31	77.5	1	33.3	107	55.7	1		53	57.0	109	59.9
	2015	160	63.2	0	0.0	3	33.3	9	90.0	12	63.2	16	80.0	0	0.0	23	79.3	0	0.0	109	59.2	0		39	59.1	120	64.5
	2016	128	63.7	0	0.0	0	0.0	3	42.9	3	37.5	11	61.1	0	0.0	18	66.7	0	0.0	96	64.9	0		33	60.0	95	65.5
	2017	70	69.3	0	0.0	0	0.0	6	66.7	6	60.0	8	61.5	0	0.0	7	58.3	1	100.0	47	73.4	1		27	81.8	43	63.2
Enrolled	2013	92	38.5	0	0.0	2	66.7	5	83.3	7	77.8	13	81.3	0	0.0	39	75.0	0	0.0	33	20.6	0		37	44.6	55	35.3
	2014	61	37.7	0	0.0	2	100.0	3	100.0	5	100.0	14	82.4	0	0.0	22	71.0	0	0.0	19	17.8	1		23	43.4	38	34.9
	2015	58	36.3	0	0.0	2	66.7	9	100.0	11	91.7	15	93.8	0	0.0	17	73.9	0	0.0	15	13.8	0		21	53.8	37	30.8
	2016	38	29.7	0	0.0	0	0.0	1	33.3	1	33.3	7	63.6	0	0.0	14	77.8	0	0.0	16	16.7	0		13	39.4	25	26.3
	2017	22	31.4	0	0.0	0	0.0	5	83.3	5	83.3	7	87.5	0	0.0	5	71.4	1	100.0	4	8.5	0		10	37.0	12	27.9

**Notes:**

- 1) URM stands for Under-Represented Minority and includes American Indian or Alaska Native; Black or African-American; Hispanic / Latino race/ethnicity groups
- 2) Unreported Gender identification is not shown; Male and Female total may not match Total
- 3) In rare situations, the "% Yield" columns may be greater than 100. There are three potential reasons for this:
  - a) Students that received Graduate College approved transfers may not have an admission record for the program that they enrolled into.
  - b) Students with a secondary curriculum enrollment may not have an admission record for that secondary program.
  - c) Students who were newly enrolled in the summer term prior to the fall were added to the fall new enrollment totals.

# Applications, Admission, & New Enrollment Yields, cont. by Race/Ethnicity & Gender

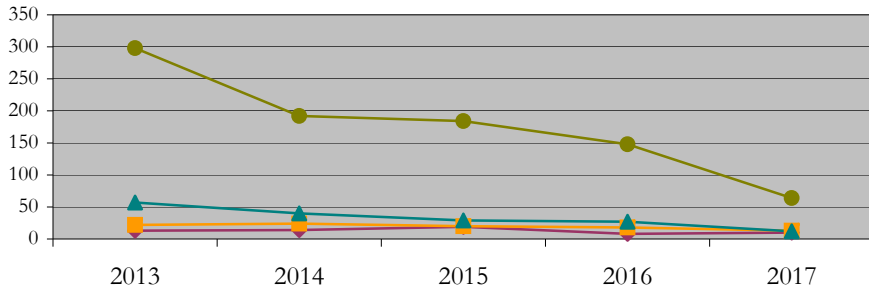
Accounting\_MS [20FS1000MS]

Fall 2013 through Fall 2017

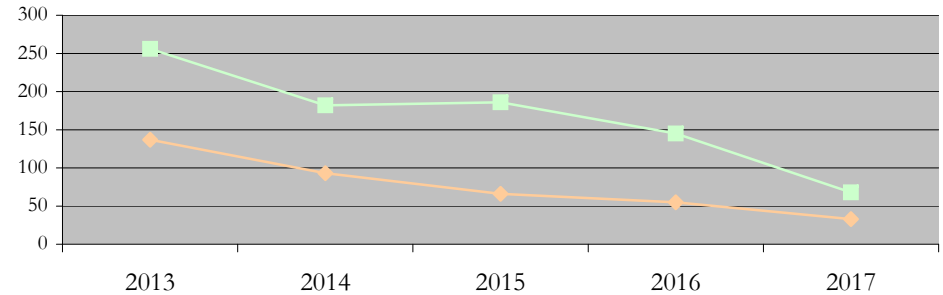
URM Total Asian White International

Male Female

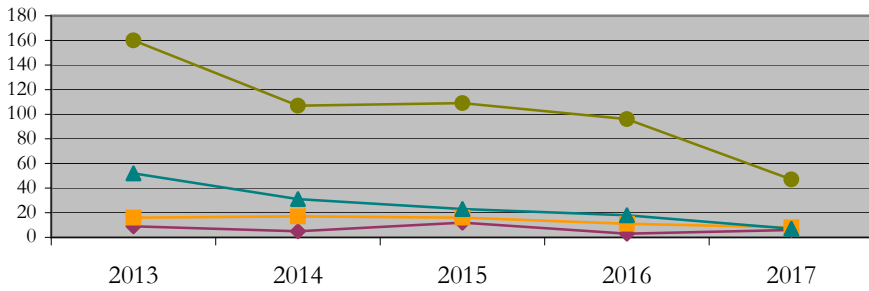
Applications by Race/Ethnicity



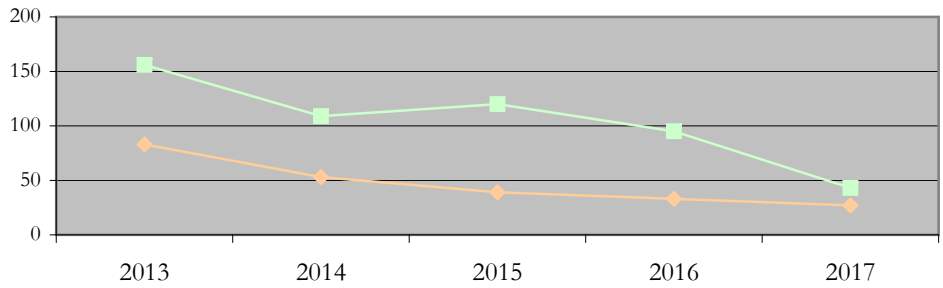
Applications by Gender



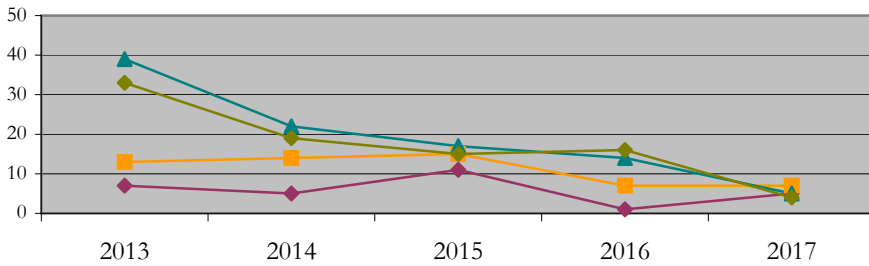
Admissions by Race/Ethnicity



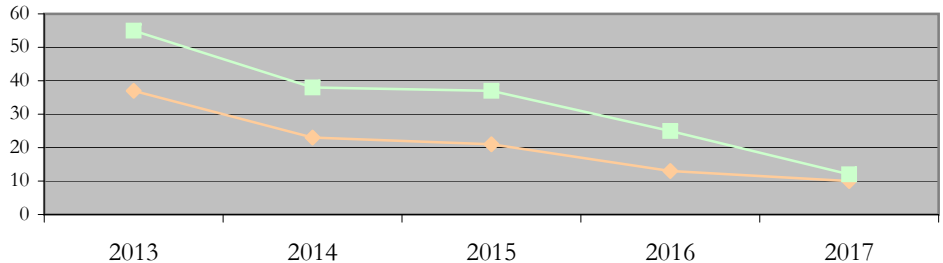
Admissions by Gender



New Enrollments by Race/Ethnicity



New Enrollments by Gender



**Notes:** 1) URM stands for Under-Represented Minority and includes American Indian or Alaska Native; Black or African-American; Hispanic / Latino race/ethnicity groups  
2) Individual URM groups, Native Hawaiian Pacific Islander, Two or More Races, and Other race/ethnicity categories left off these charts due to relatively low numbers

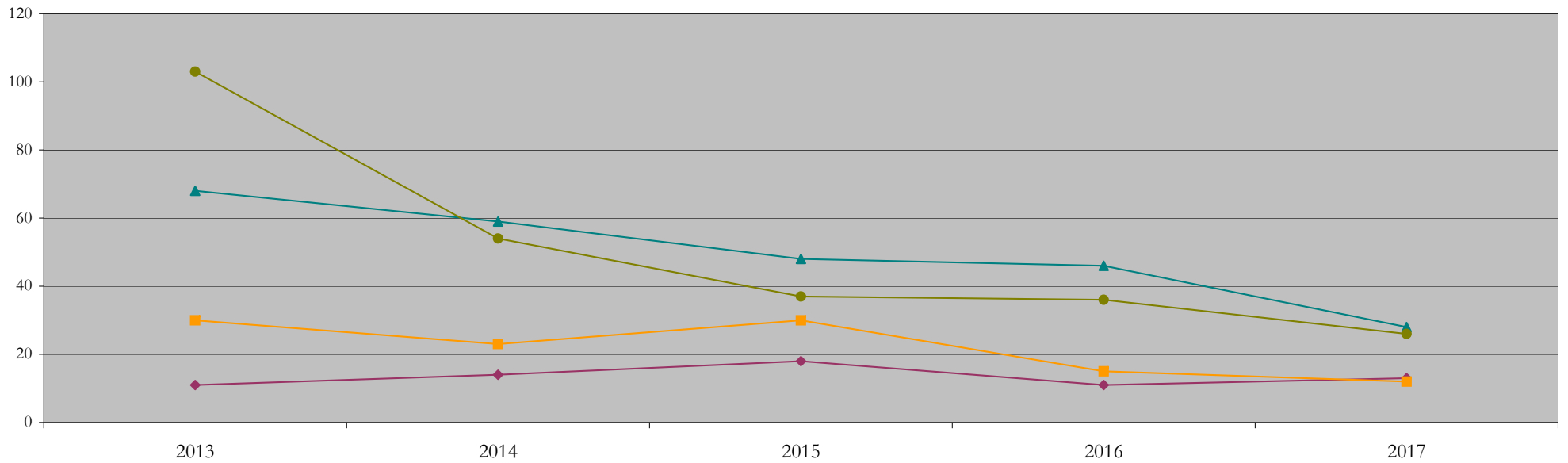
# Total Enrollment (includes secondary curriculum)

## by Race/Ethnicity

Accounting\_MS [20FS1000MS]

Fall 2013 through Fall 2017

Fall Semester Year	Total	Under Represented Minorities (URM)																		
		American Indian or Alaska Native		Black or African American		Hispanic / Latino		URM Total		Asian		Native Hawaiian or Pacific Islander		White		Two or More Races		International		Race/Eth Not Reported
		Count	%	Count	%	Count	%	Count	%	Count	%	Count	%	Count	%	Count	%	Count	%	Count
2013	213	0	0.0	4	1.9	7	3.3	11	5.2	30	14.1	0	0.0	68	31.9	0	0.0	103	48.4	1
2014	152	0	0.0	4	2.6	10	6.6	14	9.2	23	15.1	0	0.0	59	38.8	0	0.0	54	35.5	2
2015	136	0	0.0	4	2.9	14	10.3	18	13.2	30	22.1	0	0.0	48	35.3	0	0.0	37	27.2	3
2016	108	0	0.0	3	2.8	8	7.4	11	10.2	15	13.9	0	0.0	46	42.6	0	0.0	36	33.3	0
2017	80	0	0.0	2	2.5	11	13.8	13	16.3	12	15.0	0	0.0	28	35.0	1	1.3	26	32.5	0



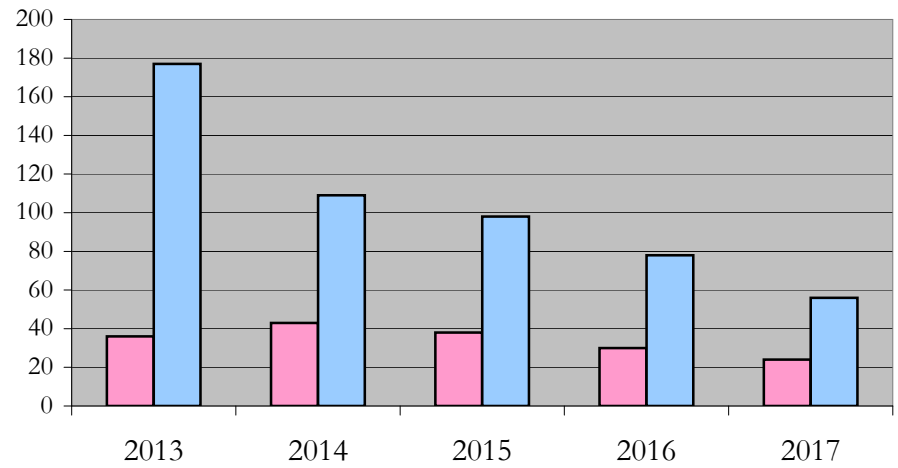
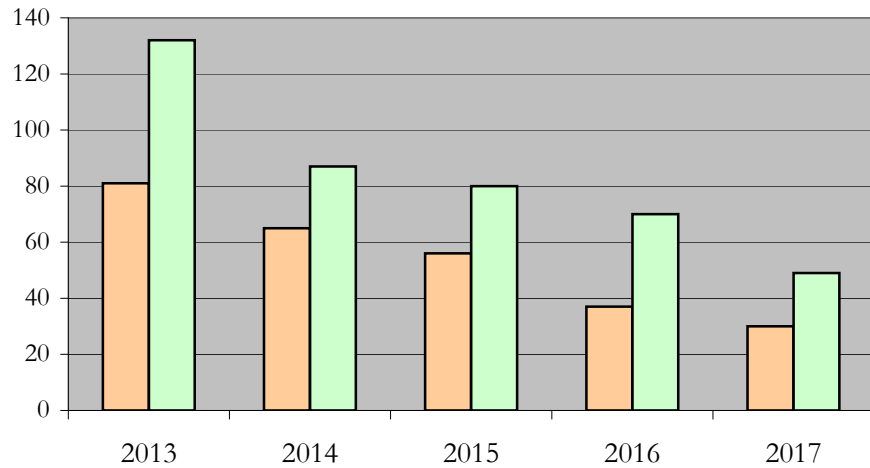
**Notes:** 1) URM stands for Under-Represented Minority and includes American Indian or Alaska Native; Black or African-American; Hispanic / Latino race/ethnicity groups  
 2) Individual URM groups, Native Hawaiian Pacific Islander, Two or More Races, and Other race/ethnicity categories left off this chart due to relatively low numbers

**Total Enrollment (includes secondary curriculum)**  
**by Student Type, Gender, and Enrollment Time**

Accounting\_MS [20FS1000MS]

Fall 2013 through Fall 2017

Fall Semester Year	Total	New		Continuing		Male		Female		Gender Not Reported	Part-time		Full-time	
		Count	%	Count	%	Count	%	Count	%	Count	Count	%	Count	%
2013	213	92	43.2	121	56.8	81	38.0	132	62.0	0	36	16.9	177	83.1
2014	152	61	40.1	91	59.9	65	42.8	87	57.2	0	43	28.3	109	71.7
2015	136	58	42.6	78	57.4	56	41.2	80	58.8	0	38	27.9	98	72.1
2016	108	38	35.2	70	64.8	37	34.3	70	64.8	1	30	27.8	78	72.2
2017	80	22	27.5	58	72.5	30	37.5	49	61.3	1	24	30.0	56	70.0



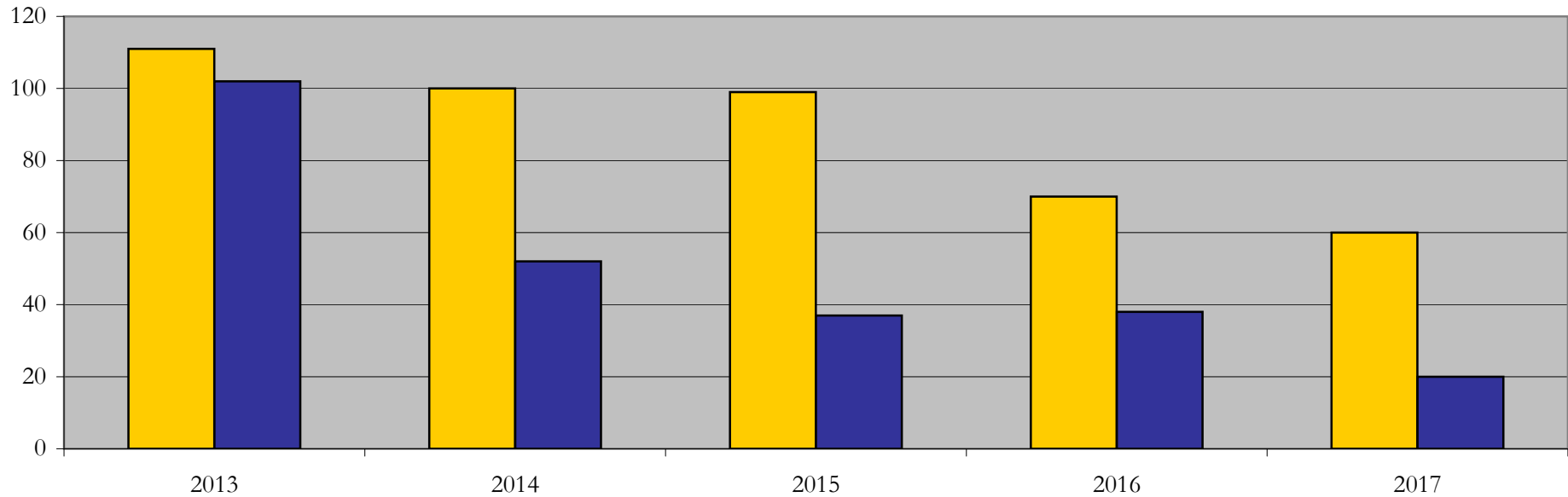
## Enrollment & Degrees Conferred

### by Primary/Secondary, Average Age, State Residency

Accounting\_MS [20FS1000MS]

Fall 2013 through Fall 2017

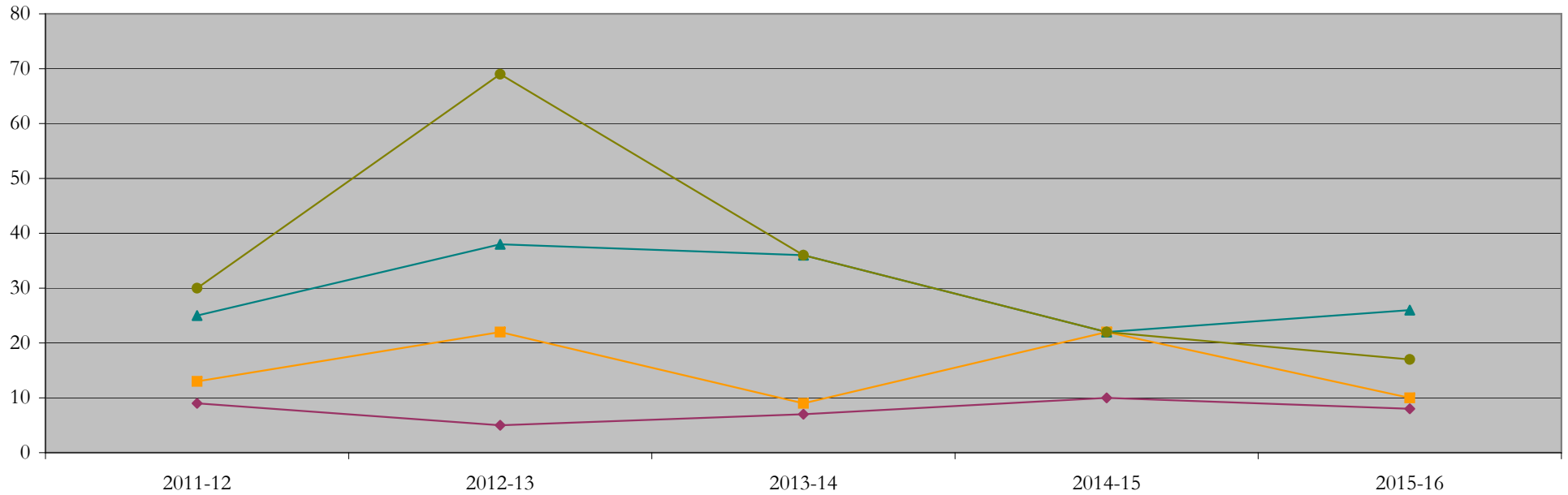
Fall Semester Year	Enrollment			Average Age			State Residency of Total Enrollment					
	Total	Primary	Secondary	Fall New Enrollment	Fall Continuing Enrollment	Academic Year Graduating Class	Residents			Non-Residents		
							Total Enrollment	New Enrollment	Continuing Enrollment	Total Enrollment	New Enrollment	Continuing Enrollment
2013	213	208	5	25	26	26	111	56	55	102	36	66
2014	152	147	5	24	27	24	100	44	56	52	17	35
2015	136	133	3	24	27	24	99	42	57	37	16	21
2016	108	107	1	25	27	26	70	21	49	38	17	21
2017	80	72	8	24	27	24	60	19	41	20	3	17



## Degrees Conferred by Race/Ethnicity

Accounting\_MS [20FS1000MS]  
AY2011-12 through 2015-16

Academic Year	Total	Under Represented Minorities (URM)										Asian	Native Hawaiian or Pacific		White		Two or More Races		International		Not Reported
		American Indian or Alaska Native		Black or African American		Hispanic / Latino		URM Total													
		Count	%	Count	%	Count	%	Count	%	Count	%		Count	%	Count	%	Count	%	Count		
2012 - 2013	80	0	0.0	2	2.5	7	8.8	9	11.3	13	16.3	0	0.0	25	31.3	2	2.5	30	37.5	1	
2013 - 2014	134	0	0.0	2	1.5	3	2.2	5	3.7	22	16.4	0	0.0	38	28.4	0	0.0	69	51.5	0	
2014 - 2015	89	0	0.0	2	2.2	5	5.6	7	7.9	9	10.1	0	0.0	36	40.4	0	0.0	36	40.4	1	
2015 - 2016	79	0	0.0	2	2.5	8	10.1	10	12.7	22	27.8	0	0.0	22	27.8	0	0.0	22	27.8	3	
2016 - 2017	61	0	0.0	2	3.3	6	9.8	8	13.1	10	16.4	0	0.0	26	42.6	0	0.0	17	27.9	0	



**Notes:** 1) URM stands for Under-Represented Minority and includes American Indian or Alaska Native; Black or African-American; Hispanic / Latino race/ethnicity groups  
2) Individual URM groups, Native Hawaiian Pacific Islander, Two or More Races, and Other race/ethnicity categories left off this chart due to relatively low numbers

## Degrees Conferred

### by Gender

Accounting\_MS [20FS1000MS]

AY2011-12 through 2015-16

Academic Year	Total	Male		Female		Not Reported
		Count	%	Count	%	
2012 - 2013	80	38	47.5	42	52.5	0
2013 - 2014	134	47	35.1	87	64.9	0
2014 - 2015	89	35	39.3	54	60.7	0
2015 - 2016	79	36	45.6	43	54.4	0
2016 - 2017	61	21	34.4	40	65.6	0

