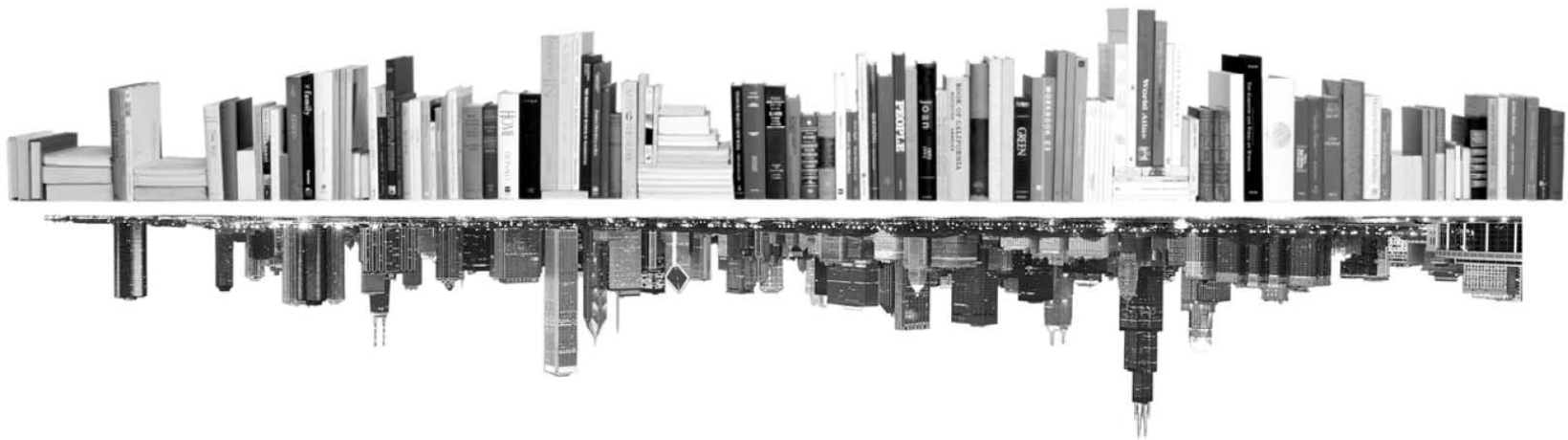


**GRADUATE
COLLEGE**



**ENROLLMENT MANAGEMENT REPORT
COLLEGE PROFILE
BUSINESS ADMINISTRATION
FALL 2016**





INTRODUCTION – COLLEGE PROFILE

The following college profile has been developed to tailor our annual enrollment report to your college’s data.

The college profile report tracks students, not enrollments. This means that students with dual enrollments are reported only once – under their first program.

Kevin Monahan
Director of Graduate Program Review and Information Systems
Graduate College, University of Illinois at Chicago
Voice: 312.413.0410 Email: kmonahan@uic.edu

TABLE OF CONTENTS

MATRICULATION	
Diversity Pipeline	1
APPLICATIONS	
by Race/Ethnicity	2 – 5
ENROLLMENT	
by Race/Ethnicity	6 – 9
by Type, Time, & Gender	10 – 13
DEGREES	
by Race/Ethnicity	14 – 15
by Gender	16 – 17
List of academic programs included in this report	Appendix A

Matriculation

Diversity Pipeline

College of Business Administration

Fall 2012 - Fall 2016

	Fall Semester Year	Applied					Admitted					Non-URM Admitted to Applied Yield %	URM Admitted to Applied Yield %	New Enrollment					Non-URM Enrolled to Admitted Yield %	URM Enrolled to Admitted Yield %	Total Enrollment				
		Grand Total	Non-URM Total		URM Total		Grand Total	Non-URM Total		URM Total				Grand Total	Non-URM Total		URM Total				Grand Total	Non-URM Total		URM Total	
			Count	%	Count	%		Count	%	Count	%				Count	%	Count	%				Count	%	Count	%
All	2012	1328	1285	96.8%	43	3.2%	683	667	97.7%	16	2.3%	51.9%	37.2%	227	215	94.7%	12	5.3%	32.2%	75.0%	618	573	92.7%	45	7.3%
	2013	1748	1675	95.8%	73	4.2%	728	696	95.6%	32	4.4%	41.6%	43.8%	263	238	90.5%	25	9.5%	34.2%	78.1%	648	593	91.5%	55	8.5%
	2014	1872	1811	96.7%	61	3.3%	762	739	97.0%	23	3.0%	40.8%	37.7%	263	245	93.2%	18	6.8%	33.2%	78.3%	662	600	90.6%	62	9.4%
	2015	2342	2259	96.5%	83	3.5%	925	896	96.9%	29	3.1%	39.7%	34.9%	283	263	92.9%	20	7.1%	29.4%	69.0%	750	688	91.7%	62	8.3%
	2016	2383	2323	97.5%	60	2.5%	1094	1067	97.5%	27	2.5%	45.9%	45.0%	287	275	95.8%	12	4.2%	25.8%	44.4%	750	699	93.2%	51	6.8%
	Average	1935	1871	96.7%	64	3.3%	838	813	97.0%	25	3.0%	43.5%	39.7%	265	247	93.4%	17	6.6%	30.4%	68.5%	686	631	92.0%	55	8.0%
Masters & IBHE Certificate	2012	1236	1200	97.1%	36	2.9%	674	658	97.6%	16	2.4%	54.8%	44.4%	222	210	94.6%	12	5.4%	31.9%	75.0%	577	534	92.5%	43	7.5%
	2013	1648	1583	96.1%	65	3.9%	717	687	95.8%	30	4.2%	43.4%	46.2%	256	232	90.6%	24	9.4%	33.8%	80.0%	609	557	91.5%	52	8.5%
	2014	1766	1708	96.7%	58	3.3%	749	727	97.1%	22	2.9%	42.6%	37.9%	254	237	93.3%	17	6.7%	32.6%	77.3%	624	564	90.4%	60	9.6%
	2015	2259	2182	96.6%	77	3.4%	916	887	96.8%	29	3.2%	40.7%	37.7%	276	256	92.8%	20	7.2%	28.9%	69.0%	715	654	91.5%	61	8.5%
	2016	2279	2222	97.5%	57	2.5%	1080	1053	97.5%	27	2.5%	47.4%	47.4%	277	265	95.7%	12	4.3%	25.2%	44.4%	715	665	93.0%	50	7.0%
	Average	1838	1779	96.8%	59	3.2%	827	802	97.0%	25	3.0%	45.1%	42.3%	257	240	93.4%	17	6.6%	29.9%	68.5%	648	595	91.8%	53	8.2%
Doctorate	2012	91	84	92.3%	7	7.7%	8	8	100.0%	0	0.0%	9.5%	0.0%	5	5	100.0%	0	0.0%	62.5%	0.0%	40	39	97.5%	1	2.5%
	2013	99	92	92.9%	7	7.1%	10	9	90.0%	1	10.0%	9.8%	14.3%	7	6	85.7%	1	14.3%	66.7%	100.0%	38	36	94.7%	2	5.3%
	2014	105	102	97.1%	3	2.9%	12	11	91.7%	1	8.3%	10.8%	33.3%	9	8	88.9%	1	11.1%	72.7%	100.0%	38	36	94.7%	2	5.3%
	2015	82	77	93.9%	5	6.1%	9	9	100.0%	0	0.0%	11.7%	0.0%	7	7	100.0%	0	0.0%	77.8%	0.0%	35	34	97.1%	1	2.9%
	2016	101	98	97.0%	3	3.0%	11	11	100.0%	0	0.0%	11.2%	0.0%	9	9	100.0%	0	0.0%	81.8%	0.0%	34	33	97.1%	1	2.9%
	Average	96	91	94.8%	5	5.2%	10	10	96.0%	0	4.0%	10.6%	8.0%	7	7	94.6%	0	5.4%	72.9%	100.0%	37	36	96.2%	1	3.8%
Non-Degree & Campus Certificate	2012	1	1	100.0%	0	0.0%	1	1	100.0%	0	0.0%	100.0%	0.0%	0	0	0.0%	0	0.0%	0.0%	0.0%	1	0	0.0%	1	100.0%
	2013	1	0	0.0%	1	100.0%	1	0	0.0%	1	100.0%	0.0%	100.0%	0	0	0.0%	0	0.0%	0.0%	0.0%	1	0	0.0%	1	100.0%
	2014	1	1	100.0%	0	0.0%	1	1	100.0%	0	0.0%	100.0%	0.0%	0	0	0.0%	0	0.0%	0.0%	0.0%	0	0	0.0%	0	0.0%
	2015	1	0	0.0%	1	100.0%	0	0	0.0%	0	0.0%	0.0%	0.0%	0	0	0.0%	0	0.0%	0.0%	0.0%	0	0	0.0%	0	0.0%
	2016	3	3	100.0%	0	0.0%	3	3	100.0%	0	0.0%	100.0%	0.0%	1	1	100.0%	0	0.0%	33.3%	0.0%	1	1	100.0%	0	0.0%
	Average	1	1	71.4%	0	28.6%	1	1	83.3%	0	16.7%	100.0%	50.0%	0	0	100.0%	0	0.0%	20.0%	0.0%	1	0	33.3%	0	66.7%

Note: URM stands for Under-Represented Minority and includes American Indian or Alaska Native; Black or African-American; Hispanic / Latino race/ethnicity groups

Applications - Total

by Race/Ethnicity

College of Business Administration

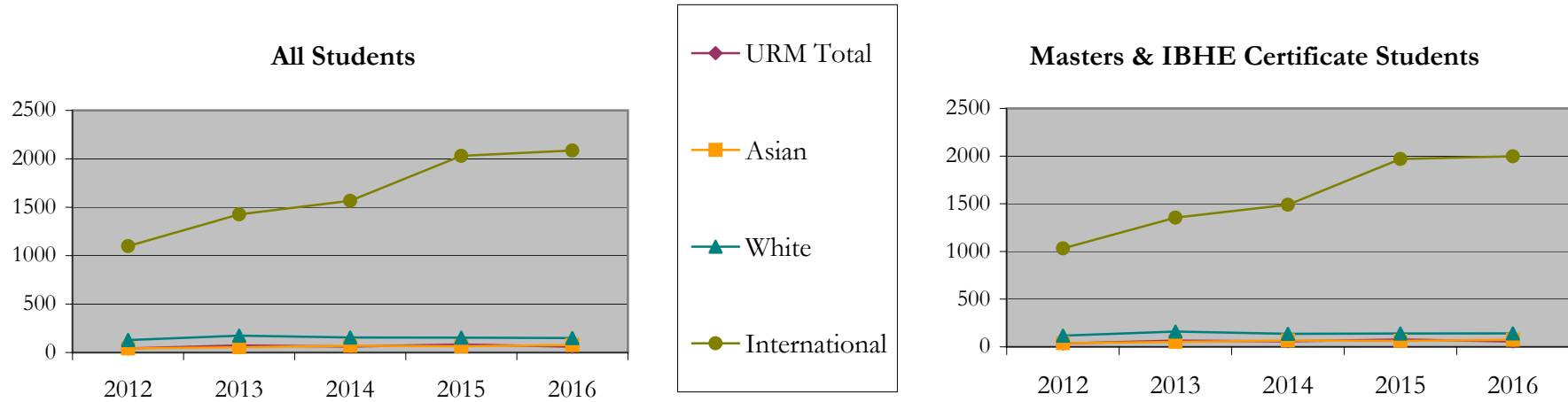
Fall 2012 - Fall 2016

		Total	Under Represented Minorities (URM)																Not Reported		
			American Indian or Alaska Native		Black or African American		Hispanic / Latino		URM Total		Asian		Native Hawaiian or Pacific Islander		White		Two or More Races			International	
			Count	%	Count	%	Count	%	Count	%	Count	%	Count	%	Count	%	Count	%		Count	%
All	2012	1333	0	0.0	25	1.9	18	1.4	43	3.2	42	3.2	0	0.0	128	9.6	3	0.2	1098	82.4	19
	2013	1748	0	0.0	39	2.2	34	1.9	73	4.2	54	3.1	0	0.0	174	10.0	8	0.5	1426	81.6	13
	2014	1872	1	0.1	31	1.7	29	1.5	61	3.3	70	3.7	0	0.0	155	8.3	6	0.3	1566	83.7	14
	2015	2342	0	0.0	48	2.0	35	1.5	83	3.5	65	2.8	0	0.0	153	6.5	7	0.3	2030	86.7	4
	2016	2383	0	0.0	26	1.1	34	1.4	60	2.5	78	3.3	0	0.0	149	6.3	4	0.2	2086	87.5	6
Masters & IBHE Certificate	2012	1242	0	0.0	19	1.5	17	1.4	36	2.9	38	3.1	0	0.0	117	9.4	2	0.2	1033	83.2	16
	2013	1648	0	0.0	34	2.1	31	1.9	65	3.9	52	3.2	0	0.0	160	9.7	7	0.4	1354	82.2	10
	2014	1767	1	0.1	29	1.6	28	1.6	58	3.3	67	3.8	0	0.0	136	7.7	4	0.2	1490	84.3	12
	2015	2259	0	0.0	43	1.9	34	1.5	77	3.4	63	2.8	0	0.0	140	6.2	7	0.3	1969	87.2	3
	2016	2279	0	0.0	26	1.1	31	1.4	57	2.5	75	3.3	0	0.0	141	6.2	3	0.1	1998	87.7	5
Doctorate	2012	90	0	0.0	6	6.7	1	1.1	7	7.8	3	3.3	0	0.0	11	12.2	1	1.1	65	72.2	3
	2013	99	0	0.0	5	5.1	2	2.0	7	7.1	2	2.0	0	0.0	14	14.1	1	1.0	72	72.7	3
	2014	104	0	0.0	2	1.9	1	1.0	3	2.9	3	2.9	0	0.0	18	17.3	2	1.9	76	73.1	2
	2015	82	0	0.0	4	4.9	1	1.2	5	6.1	2	2.4	0	0.0	13	15.9	0	0.0	61	74.4	1
	2016	101	0	0.0	0	0.0	3	3.0	3	3.0	3	3.0	0	0.0	7	6.9	0	0.0	87	86.1	1
Non-Degree & Campus Certificate	2012	1	0	0.0	0	0.0	0	0.0	0	0.0	1	100.0	0	0.0	0	0.0	0	0.0	0	0.0	0
	2013	1	0	0.0	0	0.0	1	100.0	1	100.0	0	0.0	0	0.0	0	0.0	0	0.0	0	0.0	0
	2014	1	0	0.0	0	0.0	0	0.0	0	0.0	0	0.0	0	0.0	1	100.0	0	0.0	0	0.0	0
	2015	1	0	0.0	1	100.0	0	0.0	1	100.0	0	0.0	0	0.0	0	0.0	0	0.0	0	0.0	0
	2016	3	0	0.0	0	0.0	0	0.0	0	0.0	0	0.0	0	0.0	1	33.3	1	33.3	1	33.3	0

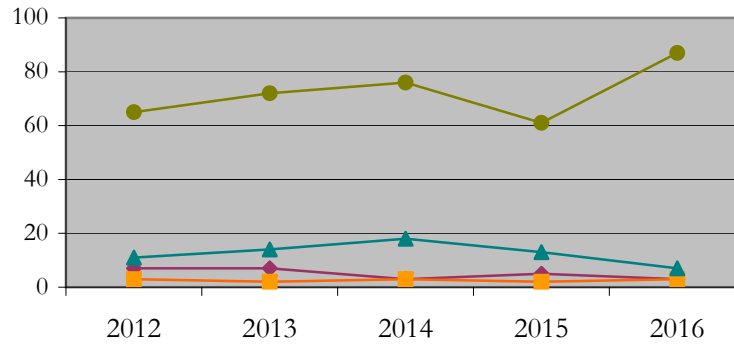
Note: URM stands for Under-Represented Minority and includes American Indian or Alaska Native; Black or African-American; Hispanic / Latino race/ethnicity groups

Applications - Total by Race/Ethnicity

College of Business Administration
Fall 2012 - Fall 2016



Doctorate Students



- Notes:** 1) URM stands for Under-Represented Minority and includes American Indian or Alaska Native; Black or African-American; Hispanic / Latino race/ethnicity groups
 2) Individual URM groups, Native Hawaiian Pacific Islander, Two or More Races, and Other race/ethnicity categories left off this charts due to relatively low numbers

Applications - Admitted

by Race/Ethnicity

College of Business Administration

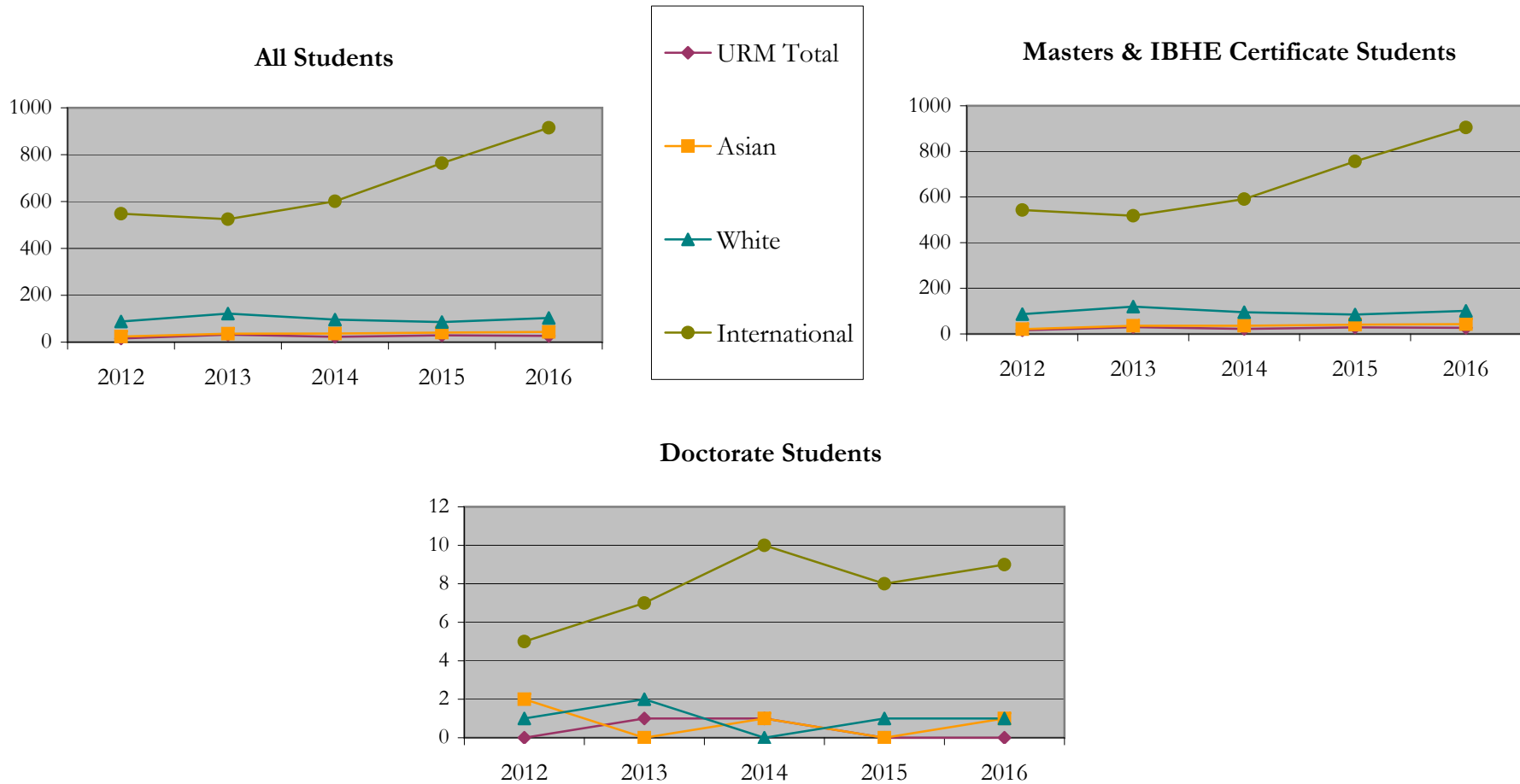
Fall 2012 - Fall 2016

		Total	Under Represented Minorities (URM)								Asian		Native Hawaiian or Pacific Islander		White		Two or More Races		International		Not Reported
			American Indian or Alaska Native		Black or African American		Hispanic / Latino		URM Total												
			Count	%	Count	%	Count	%	Count	%											
All	2012	683	0	0.0	6	0.9	10	1.5	16	2.3	24	3.5	0	0.0	88	12.9	0	0.0	548	80.2	7
	2013	728	0	0.0	17	2.3	15	2.1	32	4.4	36	4.9	0	0.0	122	16.8	4	0.5	525	72.1	9
	2014	762	1	0.1	9	1.2	13	1.7	23	3.0	37	4.9	0	0.0	96	12.6	1	0.1	601	78.9	4
	2015	925	0	0.0	12	1.3	17	1.8	29	3.1	41	4.4	0	0.0	86	9.3	5	0.5	764	82.6	0
	2016	1094	0	0.0	12	1.1	15	1.4	27	2.5	44	4.0	0	0.0	103	9.4	2	0.2	915	83.6	3
Masters & IBHE Certificate	2012	674	0	0.0	6	0.9	10	1.5	16	2.4	21	3.1	0	0.0	87	12.9	0	0.0	543	80.6	7
	2013	717	0	0.0	16	2.2	14	2.0	30	4.2	36	5.0	0	0.0	120	16.7	4	0.6	518	72.2	9
	2014	749	1	0.1	9	1.2	12	1.6	22	2.9	36	4.8	0	0.0	95	12.7	1	0.1	591	78.9	4
	2015	916	0	0.0	12	1.3	17	1.9	29	3.2	41	4.5	0	0.0	85	9.3	5	0.5	756	82.5	0
	2016	1080	0	0.0	12	1.1	15	1.4	27	2.5	43	4.0	0	0.0	101	9.4	1	0.1	905	83.8	3
Doctorate	2012	8	0	0.0	0	0.0	0	0.0	0	0.0	2	25.0	0	0.0	1	12.5	0	0.0	5	62.5	0
	2013	10	0	0.0	1	10.0	0	0.0	1	10.0	0	0.0	0	0.0	2	20.0	0	0.0	7	70.0	0
	2014	12	0	0.0	0	0.0	1	8.3	1	8.3	1	8.3	0	0.0	0	0.0	0	0.0	10	83.3	0
	2015	9	0	0.0	0	0.0	0	0.0	0	0.0	0	0.0	0	0.0	1	11.1	0	0.0	8	88.9	0
	2016	11	0	0.0	0	0.0	0	0.0	0	0.0	1	9.1	0	0.0	1	9.1	0	0.0	9	81.8	0
Non-Degree & Campus Certificate	2012	1	0	0.0	0	0.0	0	0.0	0	0.0	1	100.0	0	0.0	0	0.0	0	0.0	0	0.0	0
	2013	1	0	0.0	0	0.0	1	100.0	1	100.0	0	0.0	0	0.0	0	0.0	0	0.0	0	0.0	0
	2014	1	0	0.0	0	0.0	0	0.0	0	0.0	0	0.0	0	0.0	1	100.0	0	0.0	0	0.0	0
	2015	0	0	0.0	0	0.0	0	0.0	0	0.0	0	0.0	0	0.0	0	0.0	0	0.0	0	0.0	0
	2016	3	0	0.0	0	0.0	0	0.0	0	0.0	0	0.0	0	0.0	1	33.3	1	33.3	1	33.3	0

Note: URM stands for Under-Represented Minority and includes American Indian or Alaska Native; Black or African-American; Hispanic / Latino race/ethnicity groups

Applications - Admitted by Race/Ethnicity

College of Business Administration
Fall 2012 - Fall 2016



Notes: 1) URM stands for Under-Represented Minority and includes American Indian or Alaska Native; Black or African-American; Hispanic / Latino race/ethnicity groups

2) Individual URM groups, Native Hawaiian Pacific Islander, Two or More Races, and Other race/ethnicity categories left off this charts due to relatively low numbers

**Enrollment - New
by Race/Ethnicity**

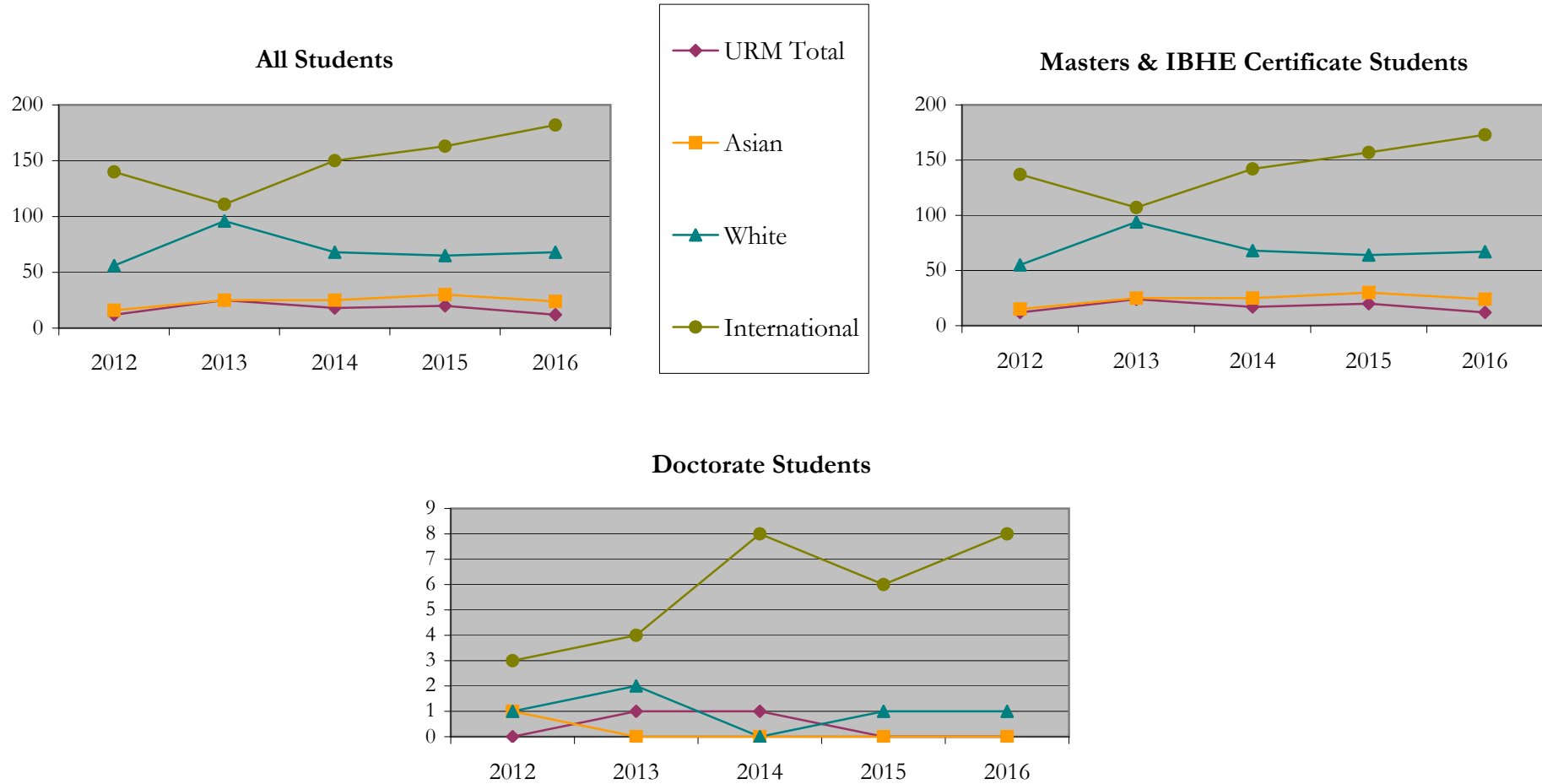
College of Business Administration
Fall 2012 - Fall 2016

		Total	Under Represented Minorities (URM)								Asian		Native Hawaiian or Pacific Islander		White		Two or More Races		International		Not Reported
			American Indian or Alaska Native		Black or African American		Hispanic / Latino		URM Total												
			Count	%	Count	%	Count	%	Count	%											
All	2012	227	0	0.0	4	1.8	8	3.5	12	5.3	16	7.0	0	0.0	56	24.7	0	0.0	140	61.7	3
	2013	263	0	0.0	13	4.9	12	4.6	25	9.5	25	9.5	0	0.0	96	36.5	1	0.4	111	42.2	5
	2014	263	0	0.0	7	2.7	11	4.2	18	6.8	25	9.5	0	0.0	68	25.9	0	0.0	150	57.0	2
	2015	283	0	0.0	6	2.1	14	4.9	20	7.1	30	10.6	0	0.0	65	23.0	5	1.8	163	57.6	0
	2016	287	0	0.0	6	2.1	6	2.1	12	4.2	24	8.4	0	0.0	68	23.7	0	0.0	182	63.4	1
Masters & IBHE Certificate	2012	222	0	0.0	4	1.8	8	3.6	12	5.4	15	6.8	0	0.0	55	24.8	0	0.0	137	61.7	3
	2013	256	0	0.0	12	4.7	12	4.7	24	9.4	25	9.8	0	0.0	94	36.7	1	0.4	107	41.8	5
	2014	254	0	0.0	7	2.8	10	3.9	17	6.7	25	9.8	0	0.0	68	26.8	0	0.0	142	55.9	2
	2015	276	0	0.0	6	2.2	14	5.1	20	7.2	30	10.9	0	0.0	64	23.2	5	1.8	157	56.9	0
	2016	277	0	0.0	6	2.2	6	2.2	12	4.3	24	8.7	0	0.0	67	24.2	0	0.0	173	62.5	1
Doctorate	2012	5	0	0.0	0	0.0	0	0.0	0	0.0	1	20.0	0	0.0	1	20.0	0	0.0	3	60.0	0
	2013	7	0	0.0	1	14.3	0	0.0	1	14.3	0	0.0	0	0.0	2	28.6	0	0.0	4	57.1	0
	2014	9	0	0.0	0	0.0	1	11.1	1	11.1	0	0.0	0	0.0	0	0.0	0	0.0	8	88.9	0
	2015	7	0	0.0	0	0.0	0	0.0	0	0.0	0	0.0	0	0.0	1	14.3	0	0.0	6	85.7	0
	2016	9	0	0.0	0	0.0	0	0.0	0	0.0	0	0.0	0	0.0	1	11.1	0	0.0	8	88.9	0
Non-Degree & Campus Certificate	2012	0	0	0.0	0	0.0	0	0.0	0	0.0	0	0.0	0	0.0	0	0.0	0	0.0	0	0.0	0
	2013	0	0	0.0	0	0.0	0	0.0	0	0.0	0	0.0	0	0.0	0	0.0	0	0.0	0	0.0	0
	2014	0	0	0.0	0	0.0	0	0.0	0	0.0	0	0.0	0	0.0	0	0.0	0	0.0	0	0.0	0
	2015	0	0	0.0	0	0.0	0	0.0	0	0.0	0	0.0	0	0.0	0	0.0	0	0.0	0	0.0	0
	2016	1	0	0.0	0	0.0	0	0.0	0	0.0	0	0.0	0	0.0	0	0.0	0	0.0	1	100.0	0

Note: URM stands for Under-Represented Minority and includes American Indian or Alaska Native; Black or African-American; Hispanic / Latino race/ethnicity groups

Enrollment - New by Race/Ethnicity

College of Business Administration
Fall 2012 - Fall 2016



Notes: 1) URM stands for Under-Represented Minority and includes American Indian or Alaska Native; Black or African-American; Hispanic / Latino race/ethnicity groups
 2) Individual URM groups, Native Hawaiian Pacific Islander, Two or More Races, and Other race/ethnicity categories left off this charts due to relatively low numbers

**Enrollment - Total
by Race/Ethnicity**

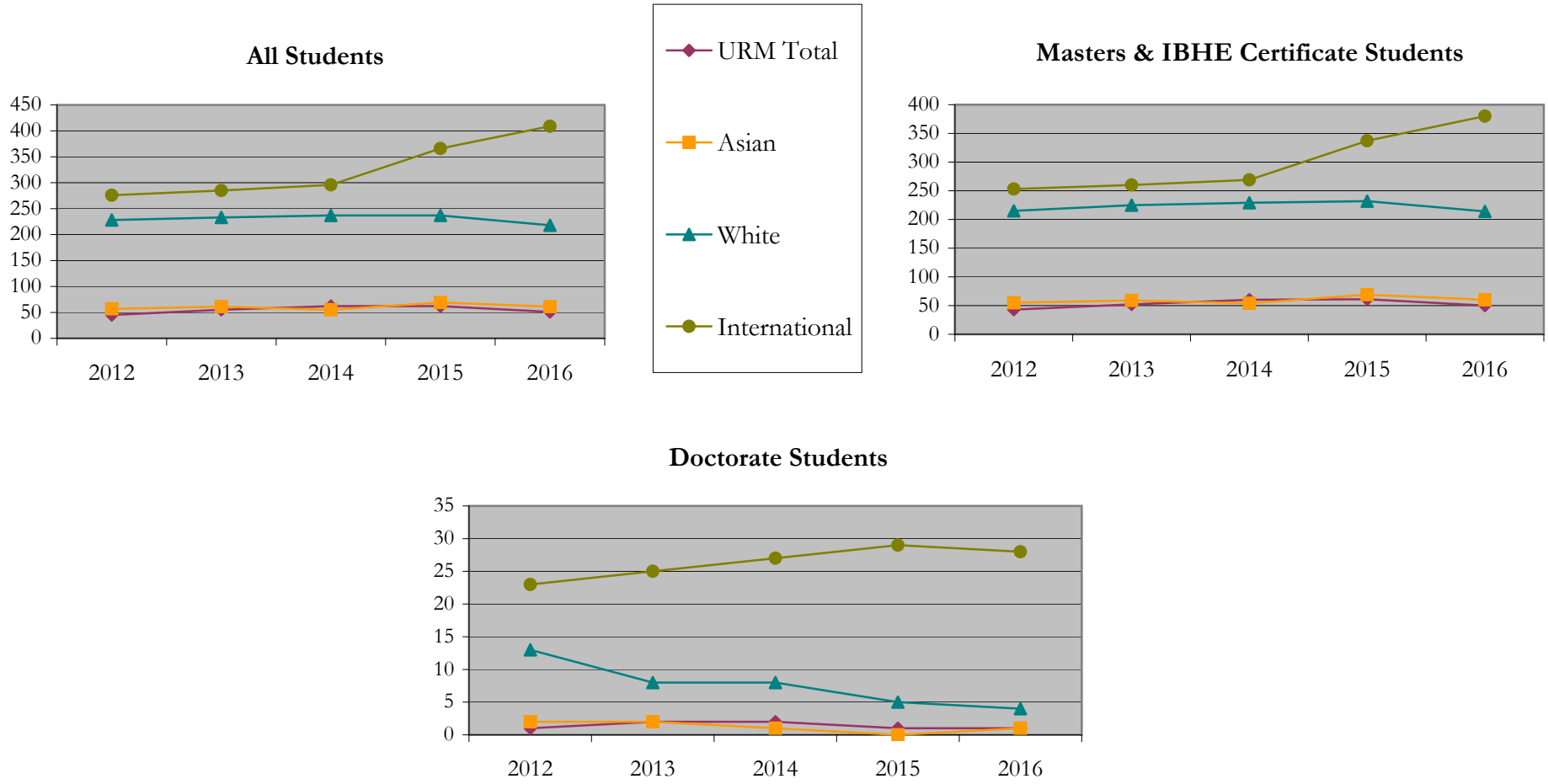
College of Business Administration
Fall 2012 - Fall 2016

		Total	Under Represented Minorities (URM)								Asian		Native Hawaiian or Pacific Islander		White		Two or More Races		International		Not Reported
			American Indian or Alaska Native		Black or African American		Hispanic / Latino		URM Total												
			Count	%	Count	%	Count	%	Count	%											
All	2012	618	0	0.0	18	2.9	27	4.4	45	7.3	57	9.2	0	0.0	228	36.9	3	0.5	276	44.7	9
	2013	648	0	0.0	26	4.0	29	4.5	55	8.5	61	9.4	0	0.0	233	36.0	4	0.6	285	44.0	10
	2014	662	0	0.0	25	3.8	37	5.6	62	9.4	55	8.3	0	0.0	237	35.8	2	0.3	296	44.7	10
	2015	750	0	0.0	22	2.9	40	5.3	62	8.3	69	9.2	0	0.0	237	31.6	7	0.9	366	48.8	9
	2016	750	0	0.0	19	2.5	32	4.3	51	6.8	61	8.1	0	0.0	218	29.1	6	0.8	409	54.5	5
Masters & IBHE Certificate	2012	577	0	0.0	17	2.9	26	4.5	43	7.5	55	9.5	0	0.0	215	37.3	2	0.3	253	43.8	9
	2013	609	0	0.0	24	3.9	28	4.6	52	8.5	59	9.7	0	0.0	225	36.9	3	0.5	260	42.7	10
	2014	624	0	0.0	24	3.8	36	5.8	60	9.6	54	8.7	0	0.0	229	36.7	2	0.3	269	43.1	10
	2015	715	0	0.0	22	3.1	39	5.5	61	8.5	69	9.7	0	0.0	232	32.4	7	1.0	337	47.1	9
	2016	715	0	0.0	18	2.5	32	4.5	50	7.0	60	8.4	0	0.0	214	29.9	6	0.8	380	53.1	5
Doctorate	2012	40	0	0.0	1	2.5	0	0.0	1	2.5	2	5.0	0	0.0	13	32.5	1	2.5	23	57.5	0
	2013	38	0	0.0	2	5.3	0	0.0	2	5.3	2	5.3	0	0.0	8	21.1	1	2.6	25	65.8	0
	2014	38	0	0.0	1	2.6	1	2.6	2	5.3	1	2.6	0	0.0	8	21.1	0	0.0	27	71.1	0
	2015	35	0	0.0	0	0.0	1	2.9	1	2.9	0	0.0	0	0.0	5	14.3	0	0.0	29	82.9	0
	2016	34	0	0.0	1	2.9	0	0.0	1	2.9	1	2.9	0	0.0	4	11.8	0	0.0	28	82.4	0
Non-Degree & Campus Certificate	2012	1	0	0.0	0	0.0	1	100.0	1	100.0	0	0.0	0	0.0	0	0.0	0	0.0	0	0.0	0
	2013	1	0	0.0	0	0.0	1	100.0	1	100.0	0	0.0	0	0.0	0	0.0	0	0.0	0	0.0	0
	2014	0	0	0.0	0	0.0	0	0.0	0	0.0	0	0.0	0	0.0	0	0.0	0	0.0	0	0.0	0
	2015	0	0	0.0	0	0.0	0	0.0	0	0.0	0	0.0	0	0.0	0	0.0	0	0.0	0	0.0	0
	2016	1	0	0.0	0	0.0	0	0.0	0	0.0	0	0.0	0	0.0	0	0.0	0	0.0	1	100.0	0

Note: URM stands for Under-Represented Minority and includes American Indian or Alaska Native; Black or African-American; Hispanic / Latino race/ethnicity groups

Enrollment - Total by Race/Ethnicity

College of Business Administration
Fall 2012 - Fall 2016



Notes: 1) URM stands for Under-Represented Minority and includes American Indian or Alaska Native; Black or African-American; Hispanic / Latino race/ethnicity groups
 2) Individual URM groups, Native Hawaiian Pacific Islander, Two or More Races, and Other race/ethnicity categories left off this charts due to relatively low numbers

Enrollment

by Student Type, Enrollment Time, and Gender

College of Business Administration

Fall 2012 - Fall 2016

		Total	New		Continuing		Male		Female		Gender Not Reported	Part-time		Full-time	
			Count	%	Count	%	Count	%	Count	%		Count	%	Count	%
All	2012	618	227	36.7	391	63.3	358	57.9	260	42.1	0	180	29.1	438	70.9
	2013	648	263	40.6	385	59.4	347	53.5	301	46.5	0	199	30.7	449	69.3
	2014	662	263	39.7	399	60.3	396	59.8	266	40.2	0	203	30.7	459	69.3
	2015	750	283	37.7	467	62.3	465	62.0	285	38.0	0	223	29.7	527	70.3
	2016	750	287	38.3	463	61.7	429	57.2	320	42.7	1	245	32.7	505	67.3
Masters & IBHE Certificate	2012	577	222	38.5	355	61.5	336	58.2	241	41.8	0	169	29.3	408	70.7
	2013	609	256	42.0	353	58.0	328	53.9	281	46.1	0	191	31.4	418	68.6
	2014	624	254	40.7	370	59.3	380	60.9	244	39.1	0	195	31.3	429	68.8
	2015	715	276	38.6	439	61.4	448	62.7	267	37.3	0	218	30.5	497	69.5
	2016	715	277	38.7	438	61.3	412	57.6	302	42.2	1	241	33.7	474	66.3
Doctorate	2012	40	5	12.5	35	87.5	21	52.5	19	47.5	0	10	25.0	30	75.0
	2013	38	7	18.4	31	81.6	18	47.4	20	52.6	0	7	18.4	31	81.6
	2014	38	9	23.7	29	76.3	16	42.1	22	57.9	0	8	21.1	30	78.9
	2015	35	7	20.0	28	80.0	17	48.6	18	51.4	0	5	14.3	30	85.7
	2016	34	9	26.5	25	73.5	17	50.0	17	50.0	0	4	11.8	30	88.2
Non-Degree & Campus Certificate	2012	1	0	0.0	1	100.0	1	100.0	0	0.0	0	1	100.0	0	0.0
	2013	1	0	0.0	1	100.0	1	100.0	0	0.0	0	1	100.0	0	0.0
	2014	0	0	0.0	0	0.0	0	0.0	0	0.0	0	0	0.0	0	0.0
	2015	0	0	0.0	0	0.0	0	0.0	0	0.0	0	0	0.0	0	0.0
	2016	1	1	100.0	0	0.0	0	0.0	1	100.0	0	0	0.0	1	100.0

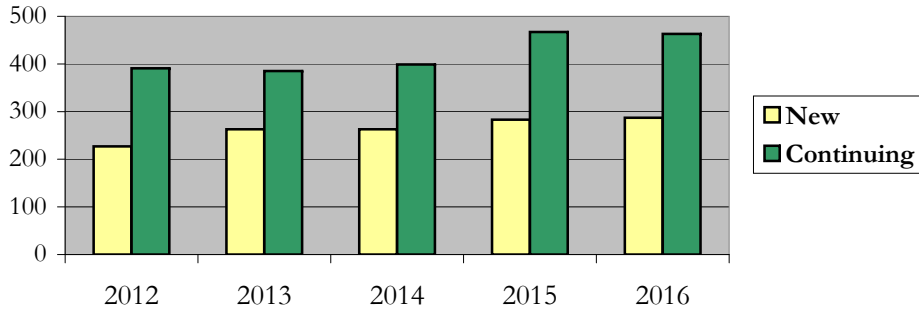
Enrollment

by Student Type, Enrollment Time, and Gender (All Students)

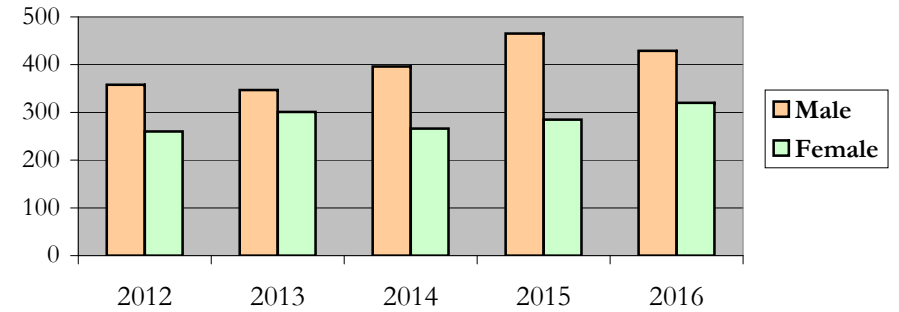
College of Business Administration

Fall 2012 - Fall 2016

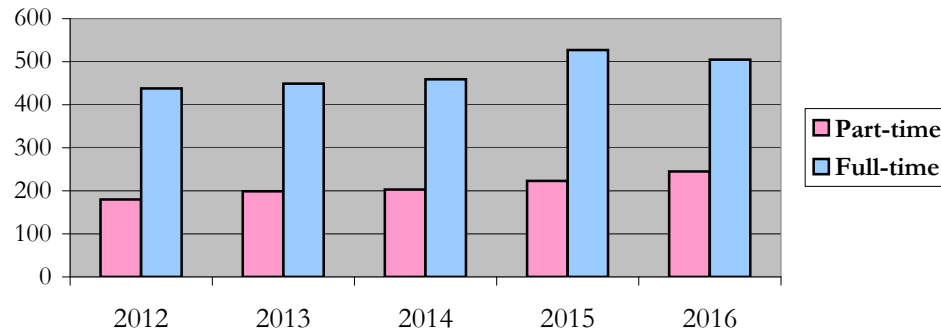
New and Continuing Enrollment



Enrollment by Gender



Enrollment by Student Enrollment Time



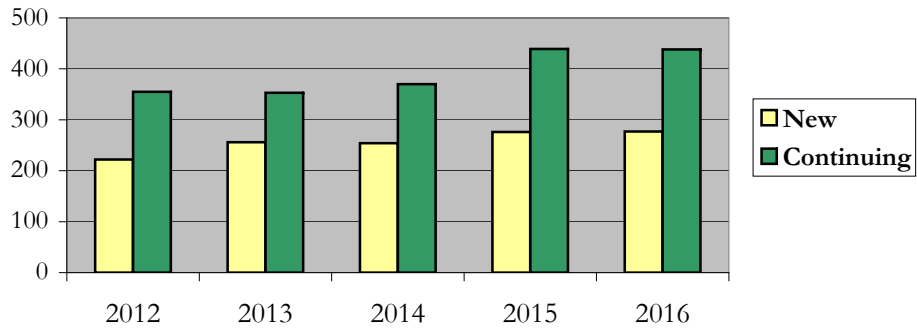
Enrollment

by Student Type, Enrollment Time, and Gender (Master's Students)

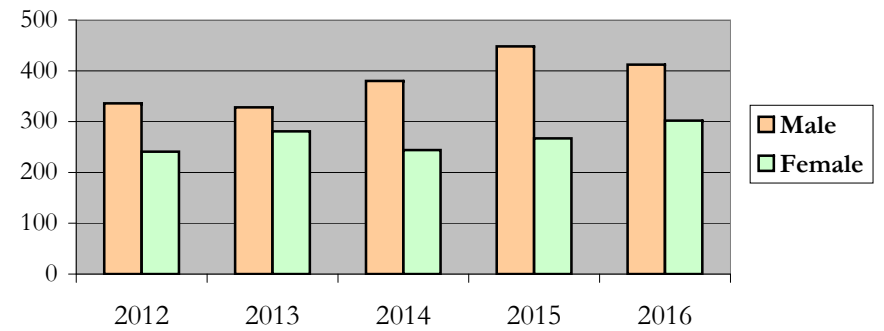
College of Business Administration

Fall 2012 - Fall 2016

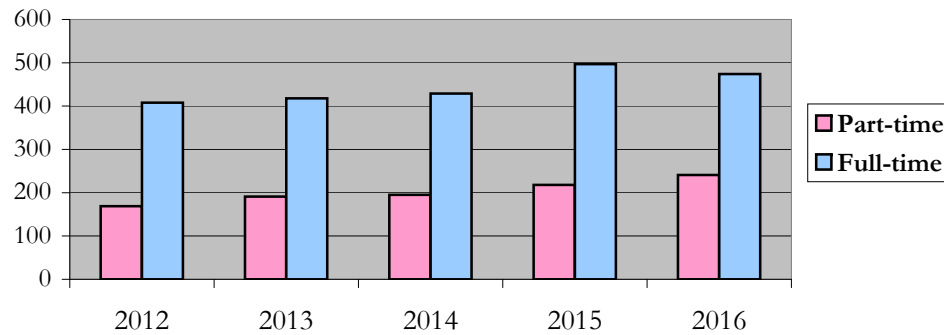
New and Continuing Enrollment



Enrollment by Gender



Enrollment by Student Enrollment Time

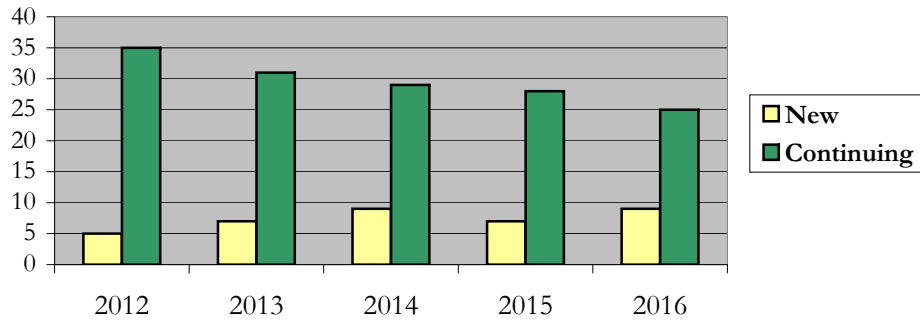


Enrollment by Student Type, Enrollment Time, and Gender (Doctorate Students)

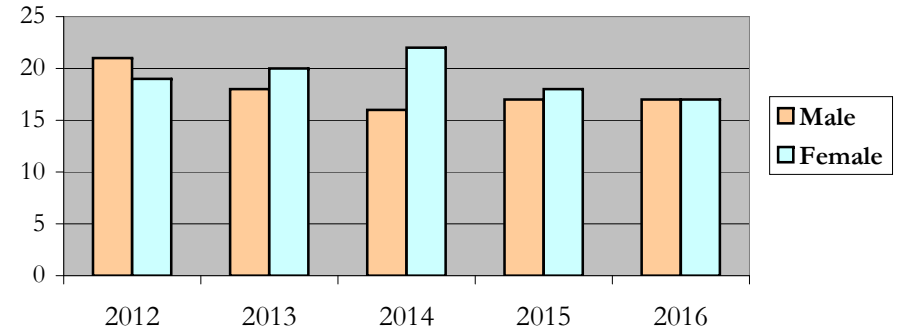
College of Business Administration

Fall 2012 - Fall 2016

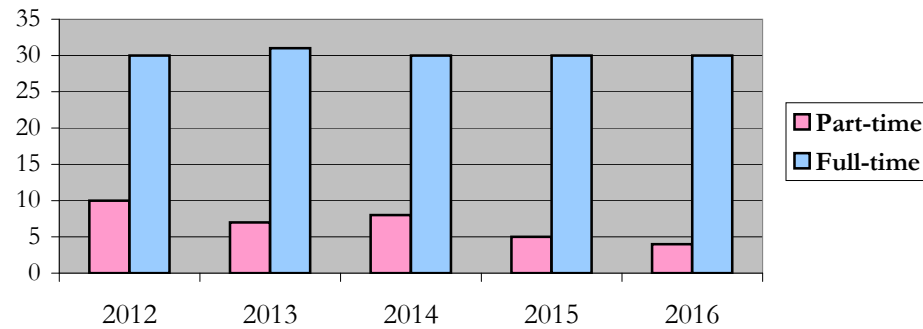
New and Continuing Enrollment



Enrollment by Gender



Enrollment by Student Enrollment Time



Degrees Conferred by Race/Ethnicity

College of Business Administration

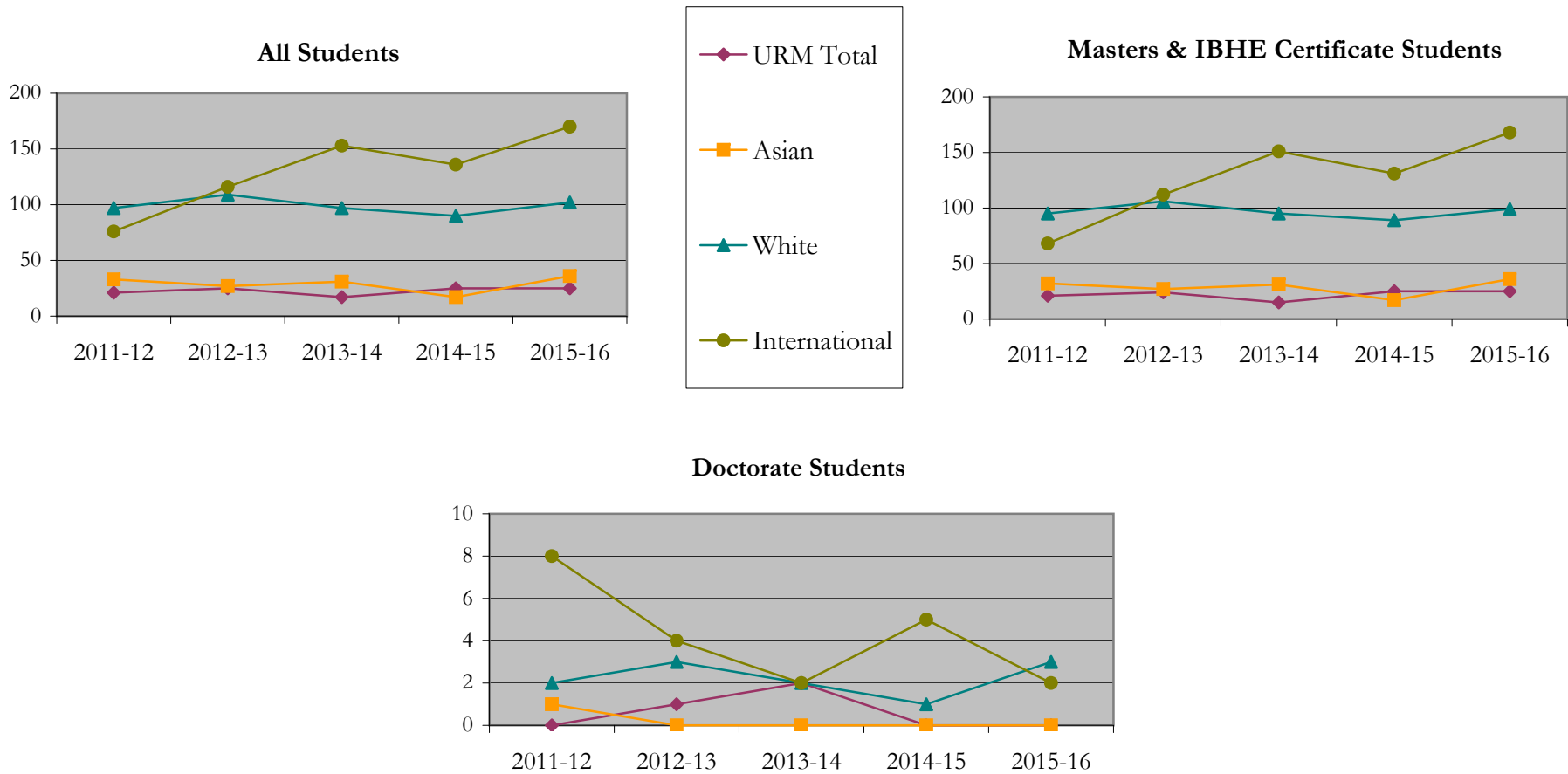
Fall 2012 - Fall 2016

		Total	Under Represented Minorities (URM)								Asian	Native Hawaiian or Pacific Islander		White		Two or More Races		International		Not Reported	
			American Indian or Alaska Native		Black or African American		Hispanic / Latino		URM Total			Count	%	Count	%	Count	%	Count	%	Count	%
			Count	%	Count	%	Count	%	Count	%											
All	2011 - 12	235	0	0.0	8	3.4	13	5.5	21	8.9	33	14.0	0	0.0	97	41.3	3	1.3	76	32.3	5
	2012 - 13	284	0	0.0	13	4.6	12	4.2	25	8.8	27	9.5	0	0.0	109	38.4	3	1.1	116	40.8	4
	2013 - 14	302	0	0.0	8	2.6	9	3.0	17	5.6	31	10.3	0	0.0	97	32.1	2	0.7	153	50.7	2
	2014 - 15	272	0	0.0	13	4.8	12	4.4	25	9.2	17	6.3	0	0.0	90	33.1	0	0.0	136	50.0	4
	2015 - 16	340	0	0.0	9	2.6	16	4.7	25	7.4	36	10.6	0	0.0	102	30.0	1	0.3	170	50.0	6
Masters & IBHE Certificate	2011 - 12	224	0	0.0	8	3.6	13	5.8	21	9.4	32	14.3	0	0.0	95	42.4	3	1.3	68	30.4	5
	2012 - 13	276	0	0.0	12	4.3	12	4.3	24	8.7	27	9.8	0	0.0	106	38.4	3	1.1	112	40.6	4
	2013 - 14	296	0	0.0	6	2.0	9	3.0	15	5.1	31	10.5	0	0.0	95	32.1	2	0.7	151	51.0	2
	2014 - 15	266	0	0.0	13	4.9	12	4.5	25	9.4	17	6.4	0	0.0	89	33.5	0	0.0	131	49.2	4
	2015 - 16	335	0	0.0	9	2.7	16	4.8	25	7.5	36	10.7	0	0.0	99	29.6	1	0.3	168	50.1	6
Doctorate	2011 - 12	11	0	0.0	0	0.0	0	0.0	0	0.0	1	9.1	0	0.0	2	18.2	0	0.0	8	72.7	0
	2012 - 13	8	0	0.0	1	12.5	0	0.0	1	12.5	0	0.0	0	0.0	3	37.5	0	0.0	4	50.0	0
	2013 - 14	6	0	0.0	2	33.3	0	0.0	2	33.3	0	0.0	0	0.0	2	33.3	0	0.0	2	33.3	0
	2014 - 15	6	0	0.0	0	0.0	0	0.0	0	0.0	0	0.0	0	0.0	1	16.7	0	0.0	5	83.3	0
	2015 - 16	5	0	0.0	0	0.0	0	0.0	0	0.0	0	0.0	0	0.0	3	60.0	0	0.0	2	40.0	0
Non-Degree & Campus Certificate	2011 - 12	0	0	0.0	0	0.0	0	0.0	0	0.0	0	0.0	0	0.0	0	0.0	0	0.0	0	0.0	0
	2012 - 13	0	0	0.0	0	0.0	0	0.0	0	0.0	0	0.0	0	0.0	0	0.0	0	0.0	0	0.0	0
	2013 - 14	0	0	0.0	0	0.0	0	0.0	0	0.0	0	0.0	0	0.0	0	0.0	0	0.0	0	0.0	0
	2014 - 15	0	0	0.0	0	0.0	0	0.0	0	0.0	0	0.0	0	0.0	0	0.0	0	0.0	0	0.0	0
	2015 - 16	0	0	0.0	0	0.0	0	0.0	0	0.0	0	0.0	0	0.0	0	0.0	0	0.0	0	0.0	0

Note: Each row represents a fiscal year, beginning with Summer term and ending with Spring.

Degrees Conferred by Race/Ethnicity

College of Business Administration
Fall 2012 - Fall 2016



Notes: 1) URM stands for Under-Represented Minority and includes American Indian or Alaska Native; Black or African-American; Hispanic / Latino race/ethnicity groups

2) Individual URM groups, Native Hawaiian Pacific Islander, Two or More Races, and Other race/ethnicity categories left off this charts due to relatively low numbers

Degrees Conferred

by Gender

College of Business Administration

Fall 2012 - Fall 2016

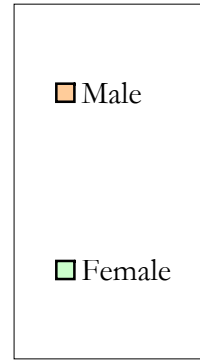
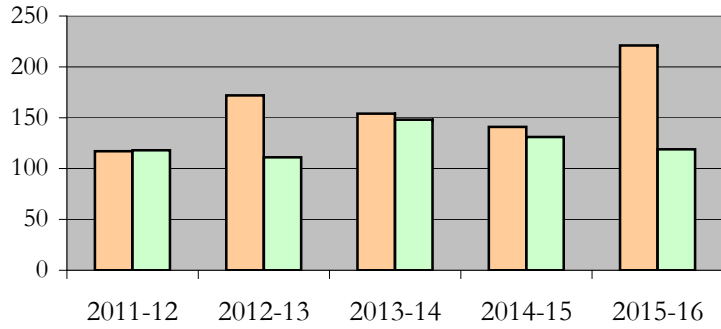
		Total	Male		Female		Not Reported
			Count	%	Count	%	
All	2011 - 12	235	117	49.8	118	50.2	0
	2012 - 13	284	172	60.6	111	39.1	1
	2013 - 14	302	154	51.0	148	49.0	0
	2014 - 15	272	141	51.8	131	48.2	0
	2015 - 16	340	221	65.0	119	35.0	0
Masters & IBHE Certificate	2011 - 12	224	114	50.9	110	49.1	0
	2012 - 13	276	168	60.9	107	38.8	1
	2013 - 14	296	151	51.0	145	49.0	0
	2014 - 15	266	138	51.9	128	48.1	0
	2015 - 16	335	219	65.4	116	34.6	0
Doctorate	2011 - 12	11	3	27.3	8	72.7	0
	2012 - 13	8	4	50.0	4	50.0	0
	2013 - 14	6	3	50.0	3	50.0	0
	2014 - 15	6	3	50.0	3	50.0	0
	2015 - 16	5	2	40.0	3	60.0	0
Campus Certificates	2011 - 12	0	0	0.0	0	0.0	0
	2012 - 13	0	0	0.0	0	0.0	0
	2013 - 14	0	0	0.0	0	0.0	0
	2014 - 15	0	0	0.0	0	0.0	0
	2015 - 16	0	0	0.0	0	0.0	0

Note: Each row represents a fiscal year, beginning with Summer term and ending with Spring.

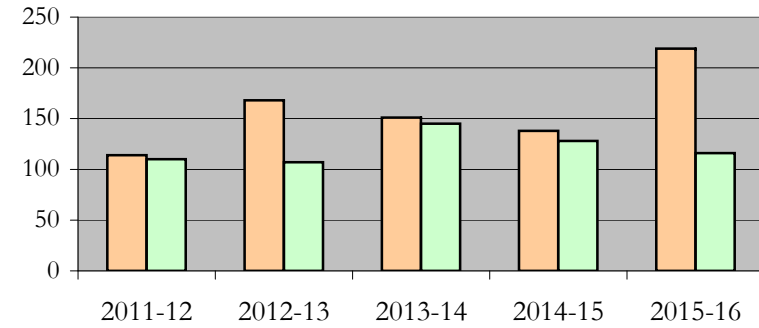
Degrees Conferred by Gender

College of Business Administration
Fall 2012 - Fall 2016

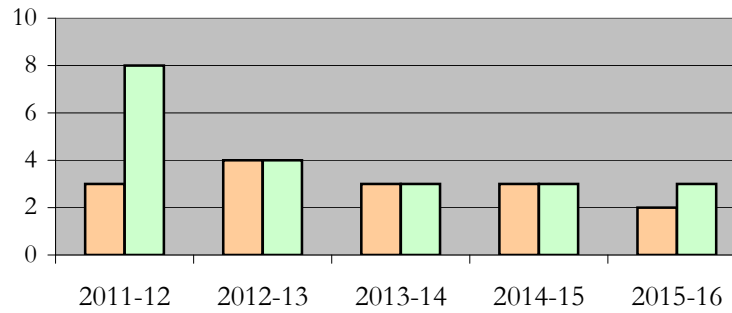
All Students



Masters & IBHE Certificate Students



Doctorate Students



Appendix A

College of Business Administration

Fall 2012 - Fall 2016

List of program codes included in this document

20FL5482NDEG

20FL9875MBA

20FL9875NDEG

20FS0075MS

20FS0079NDEG

20FS0079PHD

20FS1000MS

20FS1000NDEG

20FS1432MS

20FS1657MA

20FS5395MS

20FS9875MBA

20FS9875MBAC

20FS9875NDEG

20FS9890MS

20FS9890NDEG

20FS9890PHD

21FL9875MBA

21FS9875MBA

27FS9890MSU

Notes: 1) Program codes are sorted by alphabetical order in column-wise fashion

2) Program codes highlighted in yellow did not have applications, enrollment, nor degrees conferred in the covered period