

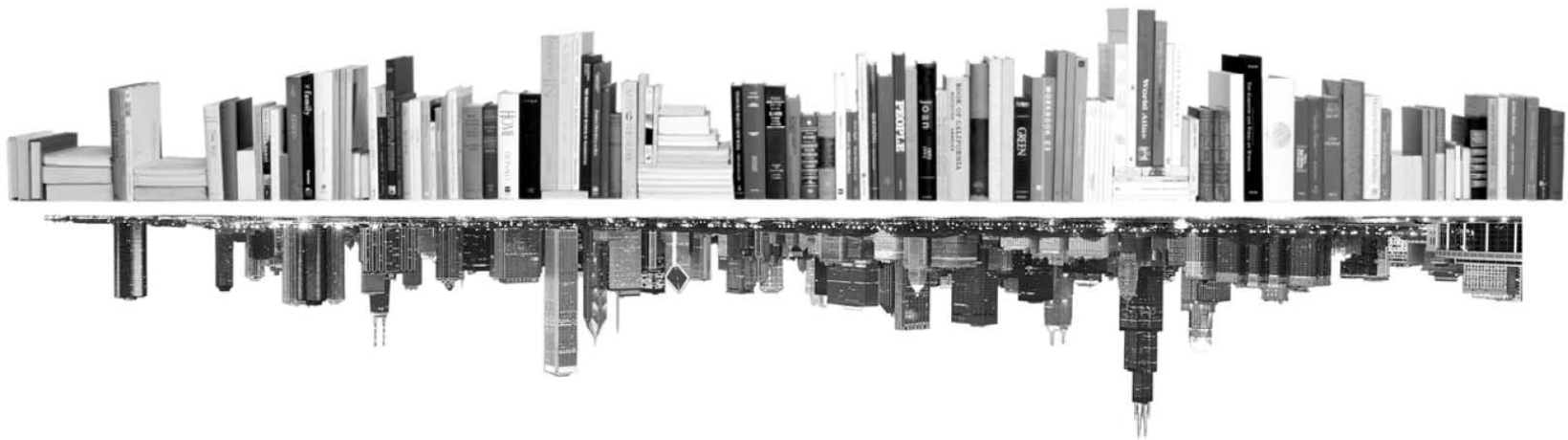
**GRADUATE  
COLLEGE**



---

**ENROLLMENT MANAGEMENT REPORT  
COLLEGE PROFILE  
ARCHITECTURE AND ARTS  
FALL 2016**

---





---

---

## INTRODUCTION – COLLEGE PROFILE

---

---

The following college profile has been developed to tailor our annual enrollment report to your specific college data.

The college profile report tracks students, not enrollments. This means that students with dual enrollments are reported only once – under their first program.

Kevin Monahan  
Director of Graduate Program Review and Information Systems  
Graduate College (MC 192) | [grad.uic.edu](http://grad.uic.edu)  
University of Illinois at Chicago  
601 S. Morgan Street, 604 UH  
Chicago, IL 60607-7106  
Voice: 312.413.0410 Fax: 312.413.0185 Email: [kmonahan@uic.edu](mailto:kmonahan@uic.edu)

---

---

## TABLE OF CONTENTS

---

---

APPLICATIONS	
Status	1 – 2
Race/Ethnicity	3 – 9
ENROLLMENT	
Race/Ethnicity	10 – 11
Type, Time, Gender	12 – 15
DEGREES	
Race/Ethnicity	16 – 17
Gender	18 – 19
List of academic programs included in this report	Appendix A

# Applications

## By Application Status

College of Architecture and the Arts

Fall 2012 - Fall 2016

		Applied	Admitted	Denied	Other	Admit to Applied %	Enrolled	Enrolled to Admitted %	Enrolled to Applied %
All	2012	647	205	434	8	31.7	61	29.8	9.4
	2013	600	203	366	31	33.8	68	33.5	11.3
	2014	507	191	287	29	37.7	63	33.0	12.4
	2015	410	170	221	19	41.5	59	34.7	14.4
	2016	478	221	240	17	46.2	68	30.8	14.2
Master's	2012	635	200	429	6	31.5	57	28.5	9.0
	2013	478	178	271	29	37.2	57	32.0	11.9
	2014	374	163	189	22	43.6	51	31.3	13.6
	2015	298	134	154	10	45.0	46	34.3	15.4
	2016	363	177	177	9	48.8	54	30.5	14.9
Doctorate	2012	9	3	5	1	33.3	3	100.0	33.3
	2013	21	7	13	1	33.3	2	28.6	9.5
	2014	19	10	6	3	52.6	4	40.0	21.1
	2015	21	8	13	0	38.1	3	37.5	14.3
	2016	23	7	11	5	30.4	2	28.6	8.7
Non-Degree & Certificates	2012	3	2	0	1	66.7	1	50.0	33.3
	2013	101	18	82	1	17.8	9	50.0	8.9
	2014	114	18	92	4	15.8	8	44.4	7.0
	2015	91	28	54	9	30.8	10	35.7	11.0
	2016	92	37	52	3	40.2	12	32.4	13.0

**Notes:** 1) Non-Degree & Certificate numbers include IBHE and Campus certificates

2) "N/A" in the "Enrolled to Admitted %" or "Enrolled to Applied %" columns means that the percentage is greater than 100. There are three potential reasons for this:

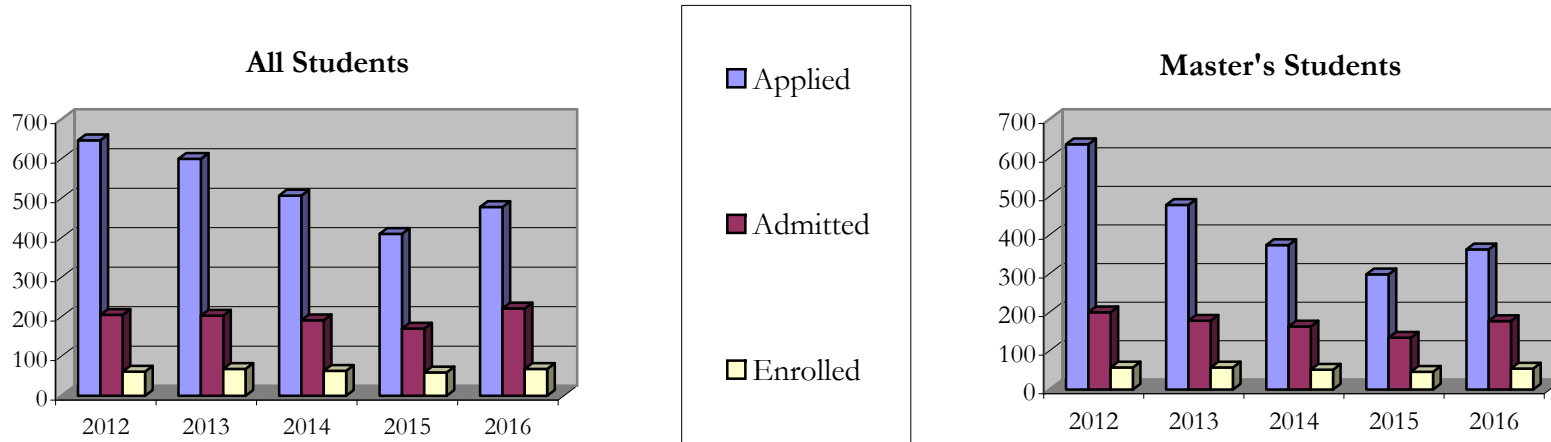
- Students that received Graduate College approved transfers may not have an admission record for the program that they enrolled into.
- Students with a secondary curriculum enrollment may not have an admission record for that secondary program.
- Students who were newly enrolled in the summer term prior to the fall were added to the fall new enrollment totals.

# Applications

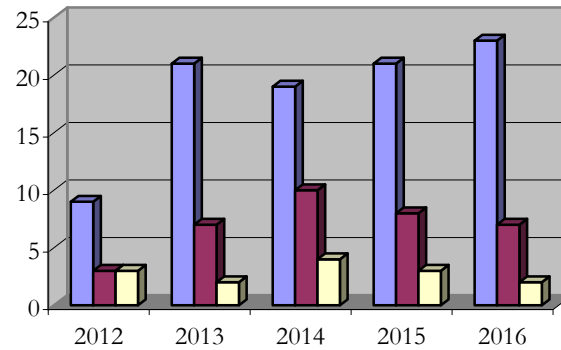
## By Application Status

College of Architecture and the Arts

Fall 2012 - Fall 2016



### Doctorate Students



# Applications - Total

## By Race/Ethnicity

College of Architecture and the Arts

Fall 2012 - Fall 2016

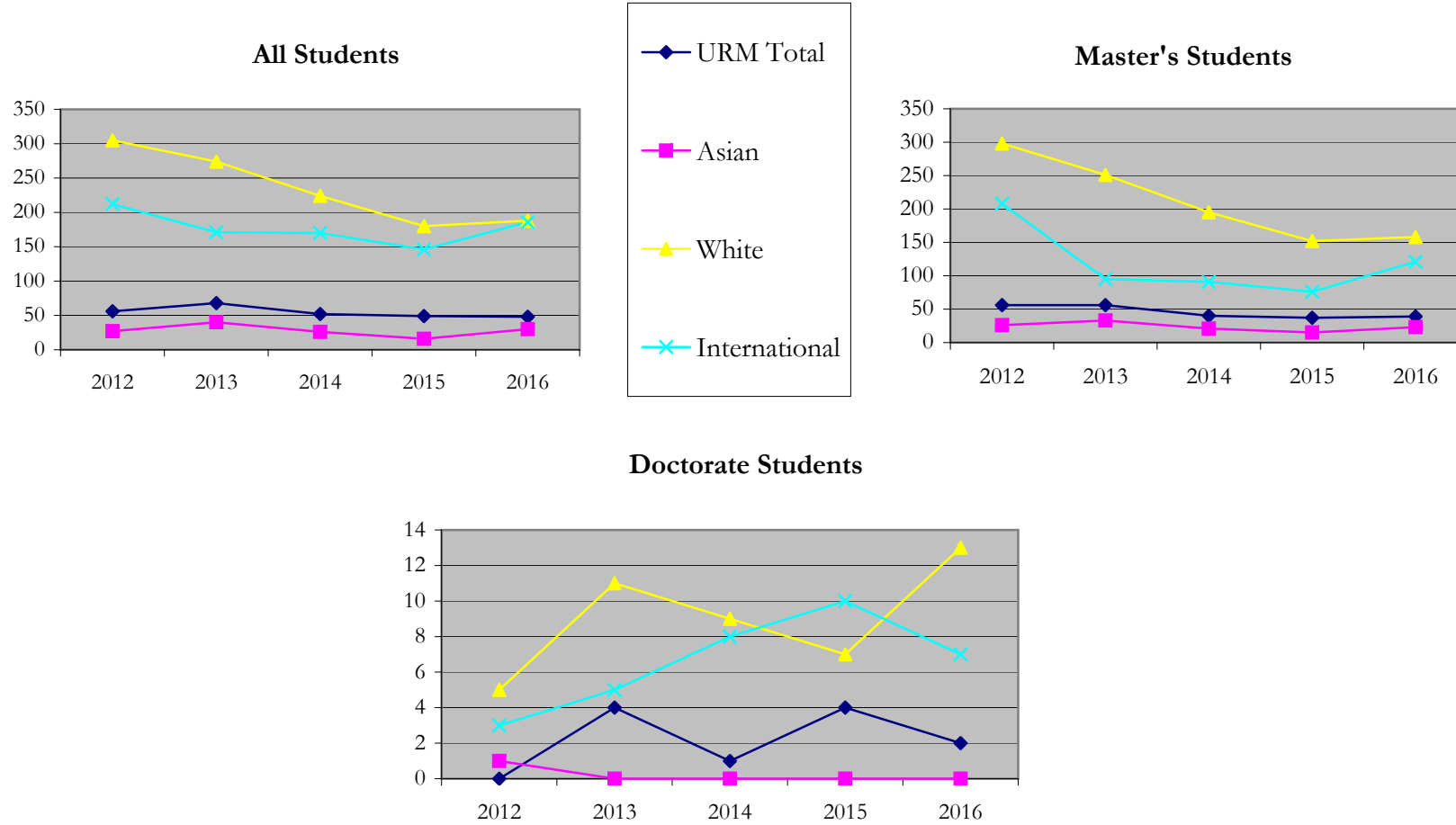
		Total	Under Represented Minorities (URM)								Asian		Native Hawaiian or Pacific Islander		White		Two or More Races		International		Not Reported
			American Indian or Alaska Native		Black or African American		Hispanic / Latino		URM Total												
			Count	%	Count	%	Count	%	Count	%											
All	2012	648	1	0.2	18	2.8	37	5.7	56	8.6	27	4.2	1	0.2	305	47.1	14	2.2	212	32.7	33
	2013	600	0	0.0	20	3.3	48	8.0	68	11.3	40	6.7	0	0.0	274	45.7	14	2.3	171	28.5	33
	2014	508	0	0.0	17	3.3	35	6.9	52	10.2	26	5.1	0	0.0	224	44.1	12	2.4	170	33.5	24
	2015	410	2	0.5	17	4.1	30	7.3	49	12.0	16	3.9	0	0.0	180	43.9	6	1.5	146	35.6	13
	2016	478	1	0.2	14	2.9	33	6.9	48	10.0	30	6.3	0	0.0	188	39.3	11	2.3	186	38.9	15
Master's	2012	636	1	0.2	18	2.8	37	5.8	56	8.8	26	4.1	1	0.2	298	46.9	14	2.2	208	32.7	33
	2013	478	0	0.0	15	3.1	41	8.6	56	11.7	33	6.9	0	0.0	251	52.5	14	2.9	95	19.9	29
	2014	375	0	0.0	10	2.7	30	8.0	40	10.7	21	5.6	0	0.0	195	52.0	9	2.4	91	24.3	19
	2015	298	2	0.7	13	4.4	22	7.4	37	12.4	15	5.0	0	0.0	152	51.0	6	2.0	76	25.5	12
	2016	363	0	0.0	11	3.0	28	7.7	39	10.7	23	6.3	0	0.0	158	43.5	9	2.5	121	33.3	13
Doctorate	2012	9	0	0.0	0	0.0	0	0.0	0	0.0	1	11.1	0	0.0	5	55.6	0	0.0	3	33.3	0
	2013	21	0	0.0	0	0.0	4	19.0	4	19.0	0	0.0	0	0.0	11	52.4	0	0.0	5	23.8	1
	2014	19	0	0.0	1	5.3	0	0.0	1	5.3	0	0.0	0	0.0	9	47.4	0	0.0	8	42.1	1
	2015	21	0	0.0	1	4.8	3	14.3	4	19.0	0	0.0	0	0.0	7	33.3	0	0.0	10	47.6	0
	2016	23	1	4.3	0	0.0	1	4.3	2	8.7	0	0.0	0	0.0	13	56.5	0	0.0	7	30.4	1
Non-Degree & Certificates	2012	3	0	0.0	0	0.0	0	0.0	0	0.0	0	0.0	0	0.0	2	66.7	0	0.0	1	33.3	0
	2013	101	0	0.0	5	5.0	3	3.0	8	7.9	7	6.9	0	0.0	12	11.9	0	0.0	71	70.3	3
	2014	114	0	0.0	6	5.3	5	4.4	11	9.6	5	4.4	0	0.0	20	17.5	3	2.6	71	62.3	4
	2015	91	0	0.0	3	3.3	5	5.5	8	8.8	1	1.1	0	0.0	21	23.1	0	0.0	60	65.9	1
	2016	92	0	0.0	3	3.3	4	4.3	7	7.6	7	7.6	0	0.0	17	18.5	2	2.2	58	63.0	1

Notes: 1) The "Native Hawaiian or Pacific Islander" and "Two or More Races" race/ethnicity categories were added in 2010 to follow State & Federal changes in higher education enrollment reporting.

2) Non-Degree & Certificate numbers include IBHE and Campus certificates

# Applications - Total By Race/Ethnicity

College of Architecture and the Arts  
Fall 2012 - Fall 2016



**Notes:** 1) URM stands for Under-Represented Minority and includes American Indian or Alaska Native; Black or African-American; Hispanic / Latino race/ethnicity groups  
2) Individual URM groups, Native Hawaiian Pacific Islander, Two or More Races, and Other race/ethnicity categories left off this charts due to relatively low numbers

# Applications - Admitted

## By Race/Ethnicity

College of Architecture and the Arts

Fall 2012 - Fall 2016

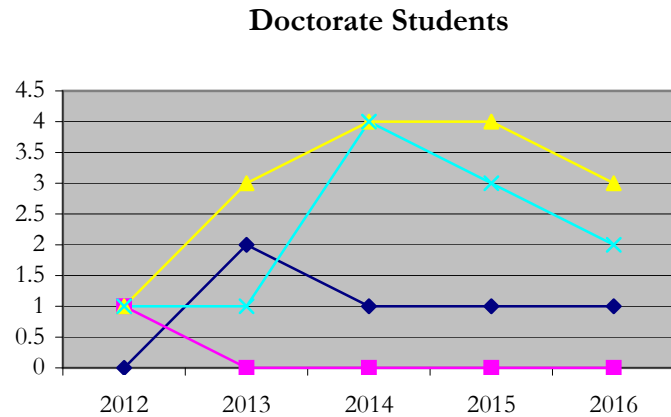
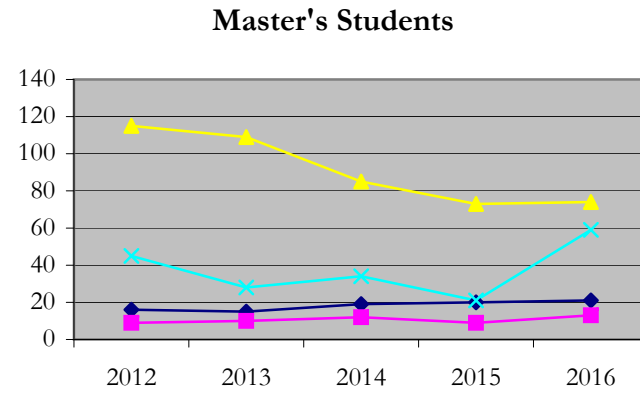
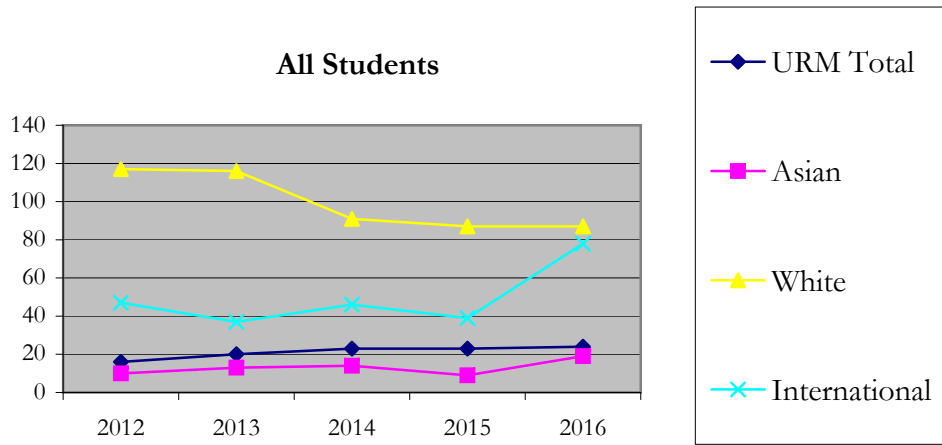
		Total	Under Represented Minorities (URM)																		
			American Indian or Alaska Native		Black or African American		Hispanic / Latino		URM Total		Asian		Native Hawaiian or Pacific Islander		White		Two or More Races		International		Not Reported
			Count	%	Count	%	Count	%	Count	%	Count	%	Count	%	Count	%	Count	%	Count	%	Count
All	2012	205	0	0.0	5	2.4	11	5.4	16	7.8	10	4.9	1	0.5	117	57.1	5	2.4	47	22.9	9
	2013	203	0	0.0	5	2.5	15	7.4	20	9.9	13	6.4	0	0.0	116	57.1	4	2.0	37	18.2	13
	2014	191	0	0.0	4	2.1	19	9.9	23	12.0	14	7.3	0	0.0	91	47.6	6	3.1	46	24.1	11
	2015	170	1	0.6	7	4.1	15	8.8	23	13.5	9	5.3	0	0.0	87	51.2	6	3.5	39	22.9	6
	2016	221	0	0.0	5	2.3	19	8.6	24	10.9	19	8.6	0	0.0	87	39.4	8	3.6	78	35.3	5
Master's	2012	200	0	0.0	5	2.5	11	5.5	16	8.0	9	4.5	1	0.5	115	57.5	5	2.5	45	22.5	9
	2013	178	0	0.0	3	1.7	12	6.7	15	8.4	10	5.6	0	0.0	109	61.2	4	2.2	28	15.7	12
	2014	163	0	0.0	3	1.8	16	9.8	19	11.7	12	7.4	0	0.0	85	52.1	4	2.5	34	20.9	9
	2015	134	1	0.7	6	4.5	13	9.7	20	14.9	9	6.7	0	0.0	73	54.5	6	4.5	21	15.7	5
	2016	177	0	0.0	5	2.8	16	9.0	21	11.9	13	7.3	0	0.0	74	41.8	6	3.4	59	33.3	4
Doctorate	2012	3	0	0.0	0	0.0	0	0.0	0	0.0	1	33.3	0	0.0	1	33.3	0	0.0	1	33.3	0
	2013	7	0	0.0	0	0.0	2	28.6	2	28.6	0	0.0	0	0.0	3	42.9	0	0.0	1	14.3	1
	2014	10	0	0.0	1	10.0	0	0.0	1	10.0	0	0.0	0	0.0	4	40.0	0	0.0	4	40.0	1
	2015	8	0	0.0	0	0.0	1	12.5	1	12.5	0	0.0	0	0.0	4	50.0	0	0.0	3	37.5	0
	2016	7	0	0.0	0	0.0	1	14.3	1	14.3	0	0.0	0	0.0	3	42.9	0	0.0	2	28.6	1
Non-Degree & Certificates	2012	2	0	0.0	0	0.0	0	0.0	0	0.0	0	0.0	0	0.0	1	50.0	0	0.0	1	50.0	0
	2013	18	0	0.0	2	11.1	1	5.6	3	16.7	3	16.7	0	0.0	4	22.2	0	0.0	8	44.4	0
	2014	18	0	0.0	0	0.0	3	16.7	3	16.7	2	11.1	0	0.0	2	11.1	2	11.1	8	44.4	1
	2015	28	0	0.0	1	3.6	1	3.6	2	7.1	0	0.0	0	0.0	10	35.7	0	0.0	15	53.6	1
	2016	37	0	0.0	0	0.0	2	5.4	2	5.4	6	16.2	0	0.0	10	27.0	2	5.4	17	45.9	0

Notes: 1) The "Native Hawaiian or Pacific Islander" and "Two or More Races" race/ethnicity categories were added in 2010 to follow State & Federal changes in higher education enrollment reporting.

2) Non-Degree & Certificate numbers include IBHE and Campus certificates

# Applications - Admitted By Race/Ethnicity

College of Architecture and the Arts  
Fall 2012 - Fall 2016



**Notes:** 1) URM stands for Under-Represented Minority and includes American Indian or Alaska Native; Black or African-American; Hispanic / Latino race/ethnicity groups  
2) Individual URM groups, Native Hawaiian Pacific Islander, Two or More Races, and Other race/ethnicity categories left off this charts due to relatively low numbers



# Applications - Denied

## By Race/Ethnicity

College of Architecture and the Arts

Fall 2012 - Fall 2016

		Total	Under Represented Minorities (URM)								Asian		Native Hawaiian or Pacific Islander		White		Two or More Races		International		Not Reported
			American Indian or Alaska Native		Black or African American		Hispanic / Latino		URM Total												
			Count	%	Count	%	Count	%	Count	%											
All	2012	435	1	0.2	12	2.8	25	5.7	38	8.7	17	3.9	0	0.0	185	42.5	8	1.8	163	37.5	24
	2013	366	0	0.0	15	4.1	28	7.7	43	11.7	25	6.8	0	0.0	142	38.8	9	2.5	129	35.2	18
	2014	287	0	0.0	13	4.5	14	4.9	27	9.4	11	3.8	0	0.0	117	40.8	5	1.7	114	39.7	13
	2015	221	1	0.5	8	3.6	12	5.4	21	9.5	7	3.2	0	0.0	82	37.1	0	0.0	104	47.1	7
	2016	240	1	0.4	8	3.3	14	5.8	23	9.6	11	4.6	0	0.0	91	37.9	3	1.3	102	42.5	10
Master's	2012	430	1	0.2	12	2.8	25	5.8	38	8.8	17	4.0	0	0.0	182	42.3	8	1.9	161	37.4	24
	2013	271	0	0.0	12	4.4	24	8.9	36	13.3	21	7.7	0	0.0	127	46.9	9	3.3	63	23.2	15
	2014	189	0	0.0	7	3.7	12	6.3	19	10.1	8	4.2	0	0.0	99	52.4	4	2.1	49	25.9	10
	2015	154	1	0.6	5	3.2	9	5.8	15	9.7	6	3.9	0	0.0	73	47.4	0	0.0	53	34.4	7
	2016	177	0	0.0	5	2.8	12	6.8	17	9.6	10	5.6	0	0.0	79	44.6	3	1.7	59	33.3	9
Doctorate	2012	5	0	0.0	0	0.0	0	0.0	0	0.0	0	0.0	0	0.0	3	60.0	0	0.0	2	40.0	0
	2013	13	0	0.0	0	0.0	2	15.4	2	15.4	0	0.0	0	0.0	7	53.8	0	0.0	4	30.8	0
	2014	6	0	0.0	0	0.0	0	0.0	0	0.0	0	0.0	0	0.0	3	50.0	0	0.0	3	50.0	0
	2015	13	0	0.0	1	7.7	2	15.4	3	23.1	0	0.0	0	0.0	3	23.1	0	0.0	7	53.8	0
	2016	11	1	9.1	0	0.0	0	0.0	1	9.1	0	0.0	0	0.0	6	54.5	0	0.0	4	36.4	0
Non-Degree & Certificates	2012	0	0	0.0	0	0.0	0	0.0	0	0.0	0	0.0	0	0.0	0	0.0	0	0.0	0	0.0	0
	2013	82	0	0.0	3	3.7	2	2.4	5	6.1	4	4.9	0	0.0	8	9.8	0	0.0	62	75.6	3
	2014	92	0	0.0	6	6.5	2	2.2	8	8.7	3	3.3	0	0.0	15	16.3	1	1.1	62	67.4	3
	2015	54	0	0.0	2	3.7	1	1.9	3	5.6	1	1.9	0	0.0	6	11.1	0	0.0	44	81.5	0
	2016	52	0	0.0	3	5.8	2	3.8	5	9.6	1	1.9	0	0.0	6	11.5	0	0.0	39	75.0	1

Notes: 1) The "Native Hawaiian or Pacific Islander" and "Two or More Races" race/ethnicity categories were added in 2010 to follow State & Federal changes in higher education enrollment reporting.

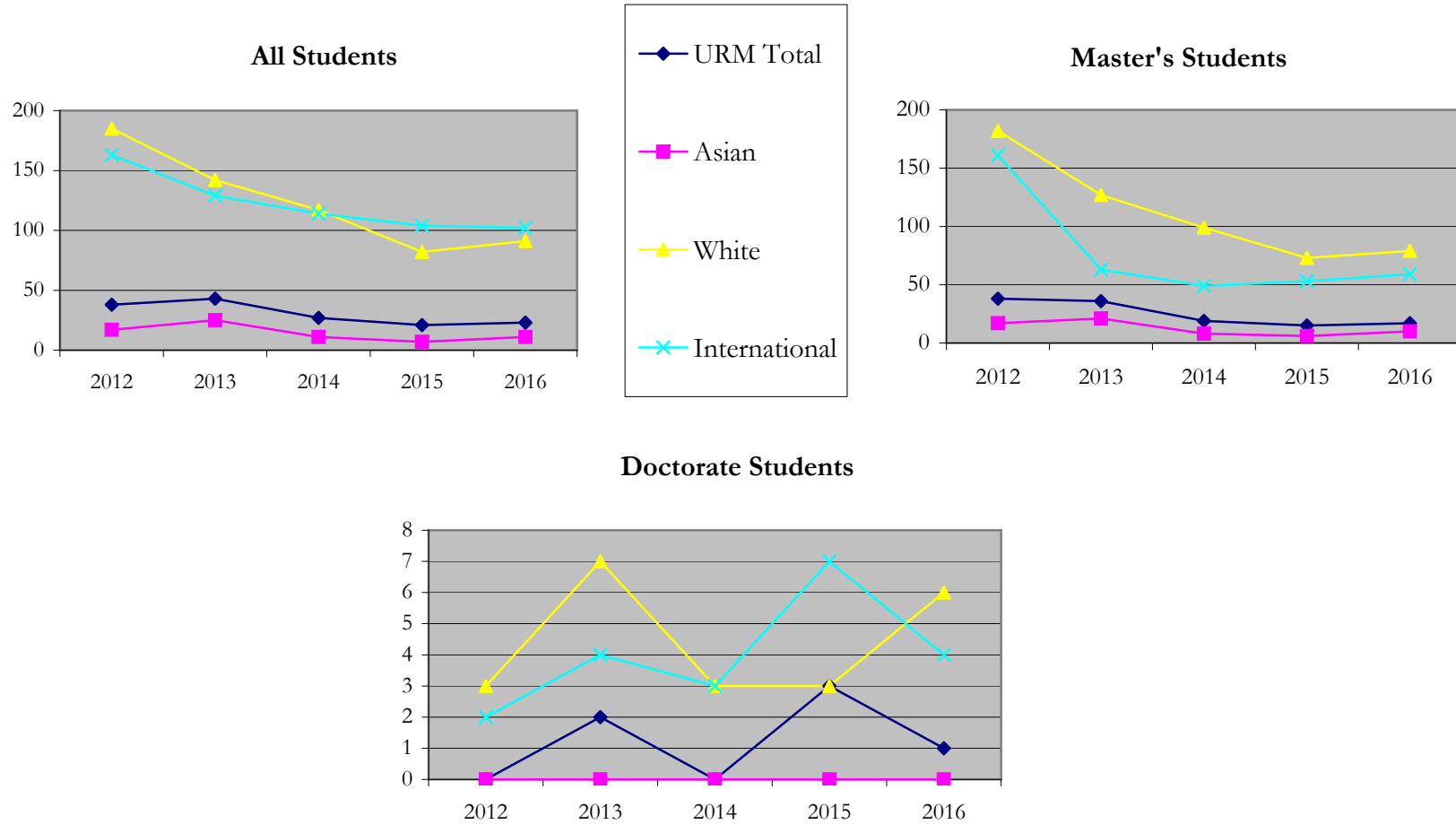
2) Non-Degree & Certificate numbers include IBHE and Campus certificates

# Applications - Denied

## By Race/Ethnicity

College of Architecture and the Arts

Fall 2012 - Fall 2016



**Notes:** 1) URM stands for Under-Represented Minority and includes American Indian or Alaska Native; Black or African-American; Hispanic / Latino race/ethnicity groups  
2) Individual URM groups, Native Hawaiian Pacific Islander, Two or More Races, and Other race/ethnicity categories left off this charts due to relatively low numbers

# Applications - Other

## By Race/Ethnicity

College of Architecture and the Arts

Fall 2012 - Fall 2016

		Total	Under Represented Minorities (URM)								Asian		Native Hawaiian or Pacific Islander		White		Two or More Races		International		Not Reported
			American Indian or Alaska Native		Black or African American		Hispanic / Latino		URM Total												
			Count	%	Count	%	Count	%	Count	%											
All	2012	8	0	0.0	1	12.5	1	12.5	2	25.0	0	0.0	0	0.0	3	37.5	1	12.5	2	25.0	0
	2013	31	0	0.0	0	0.0	5	16.1	5	16.1	2	6.5	0	0.0	16	51.6	1	3.2	5	16.1	2
	2014	30	0	0.0	0	0.0	2	6.7	2	6.7	1	3.3	0	0.0	16	53.3	1	3.3	10	33.3	0
	2015	19	0	0.0	2	10.5	3	15.8	5	26.3	0	0.0	0	0.0	11	57.9	0	0.0	3	15.8	0
	2016	17	0	0.0	1	5.9	0	0.0	1	5.9	0	0.0	0	0.0	10	58.8	0	0.0	6	35.3	0
Master's	2012	6	0	0.0	1	16.7	1	16.7	2	33.3	0	0.0	0	0.0	1	16.7	1	16.7	2	33.3	0
	2013	29	0	0.0	0	0.0	5	17.2	5	17.2	2	6.9	0	0.0	15	51.7	1	3.4	4	13.8	2
	2014	23	0	0.0	0	0.0	2	8.7	2	8.7	1	4.3	0	0.0	11	47.8	1	4.3	8	34.8	0
	2015	10	0	0.0	2	20.0	0	0.0	2	20.0	0	0.0	0	0.0	6	60.0	0	0.0	2	20.0	0
	2016	9	0	0.0	1	11.1	0	0.0	1	11.1	0	0.0	0	0.0	5	55.6	0	0.0	3	33.3	0
Doctorate	2012	1	0	0.0	0	0.0	0	0.0	0	0.0	0	0.0	0	0.0	1	100.0	0	0.0	0	0.0	0
	2013	1	0	0.0	0	0.0	0	0.0	0	0.0	0	0.0	0	0.0	1	100.0	0	0.0	0	0.0	0
	2014	3	0	0.0	0	0.0	0	0.0	0	0.0	0	0.0	0	0.0	2	66.7	0	0.0	1	33.3	0
	2015	0	0	0.0	0	0.0	0	0.0	0	0.0	0	0.0	0	0.0	0	0.0	0	0.0	0	0.0	0
	2016	5	0	0.0	0	0.0	0	0.0	0	0.0	0	0.0	0	0.0	4	80.0	0	0.0	1	20.0	0
Non-Degree & Certificates	2007	1	0	0.0	0	0.0	0	0.0	0	0.0	0	0.0	0	0.0	1	100.0	0	0.0	0	0.0	0
	2008	1	0	0.0	0	0.0	0	0.0	0	0.0	0	0.0	0	0.0	0	0.0	0	0.0	1	100.0	0
	2009	4	0	0.0	0	0.0	0	0.0	0	0.0	0	0.0	0	0.0	3	75.0	0	0.0	1	25.0	0
	2010	9	0	0.0	0	0.0	3	33.3	3	33.3	0	0.0	0	0.0	5	55.6	0	0.0	1	11.1	0
	2011	3	0	0.0	0	0.0	0	0.0	0	0.0	0	0.0	0	0.0	1	33.3	0	0.0	2	66.7	0

Notes: 1) The "Native Hawaiian or Pacific Islander" and "Two or More Races" race/ethnicity categories were added in 2010 to follow State & Federal changes in higher education enrollment reporting.

2) Non-Degree & Certificate numbers include IBHE and Campus certificates

# Enrollment

## Total Enrollment by Race/Ethnicity

College of Architecture and the Arts

Fall 2012 - Fall 2016

		Total	Under Represented Minorities (URM)								Asian		Native Hawaiian or Pacific Islander		White		Two or More Races		International		Not Reported
			American Indian or Alaska Native		Black or African American		Hispanic / Latino		URM Total												
			Count	%	Count	%	Count	%	Count	%											
All	2012	195	0	0.0	2	1.0	15	7.7	17	8.7	14	7.2	0	0.0	128	65.6	4	2.1	28	14.4	4
	2013	185	0	0.0	6	3.2	17	9.2	23	12.4	16	8.6	0	0.0	112	60.5	3	1.6	22	11.9	9
	2014	173	0	0.0	5	2.9	21	12.1	26	15.0	14	8.1	0	0.0	98	56.6	3	1.7	28	16.2	4
	2015	156	1	0.6	5	3.2	18	11.5	24	15.4	13	8.3	0	0.0	89	57.1	5	3.2	21	13.5	4
	2016	162	2	1.2	6	3.7	18	11.1	26	16.0	9	5.6	0	0.0	81	50.0	8	4.9	36	22.2	2
Master's	2012	171	0	0.0	2	1.2	13	7.6	15	8.8	11	6.4	0	0.0	114	66.7	4	2.3	23	13.5	4
	2013	141	0	0.0	4	2.8	13	9.2	17	12.1	11	7.8	0	0.0	91	64.5	3	2.1	10	7.1	9
	2014	125	0	0.0	3	2.4	15	12.0	18	14.4	11	8.8	0	0.0	74	59.2	3	2.4	15	12.0	4
	2015	111	1	0.9	4	3.6	14	12.6	19	17.1	11	9.9	0	0.0	67	60.4	5	4.5	6	5.4	3
	2016	116	2	1.7	5	4.3	15	12.9	22	19.0	8	6.9	0	0.0	59	50.9	7	6.0	19	16.4	1
Doctorate	2012	23	0	0.0	0	0.0	2	8.7	2	8.7	3	13.0	0	0.0	14	60.9	0	0.0	4	17.4	0
	2013	28	0	0.0	0	0.0	3	10.7	3	10.7	2	7.1	0	0.0	17	60.7	0	0.0	6	21.4	0
	2014	30	0	0.0	1	3.3	3	10.0	4	13.3	1	3.3	0	0.0	19	63.3	0	0.0	6	20.0	0
	2015	30	0	0.0	1	3.3	2	6.7	3	10.0	2	6.7	0	0.0	18	60.0	0	0.0	7	23.3	0
	2016	24	0	0.0	1	4.2	3	12.5	4	16.7	0	0.0	0	0.0	13	54.2	0	0.0	7	29.2	0
Non-Degree & Certificates	2012	1	0	0.0	0	0.0	0	0.0	0	0.0	0	0.0	0	0.0	0	0.0	0	0.0	1	100.0	0
	2013	16	0	0.0	2	12.5	1	6.3	3	18.8	3	18.8	0	0.0	4	25.0	0	0.0	6	37.5	0
	2014	18	0	0.0	1	5.6	3	16.7	4	22.2	2	11.1	0	0.0	5	27.8	0	0.0	7	38.9	0
	2015	15	0	0.0	0	0.0	2	13.3	2	13.3	0	0.0	0	0.0	4	26.7	0	0.0	8	53.3	1
	2016	22	0	0.0	0	0.0	0	0.0	0	0.0	1	4.5	0	0.0	9	40.9	1	4.5	10	45.5	1

Notes: 1)The "Native Hawaiian or Pacific Islander" and "Two or More Races" race/ethnicity categories were added in 2010 to follow State & Federal changes in higher education enrollment reporting.

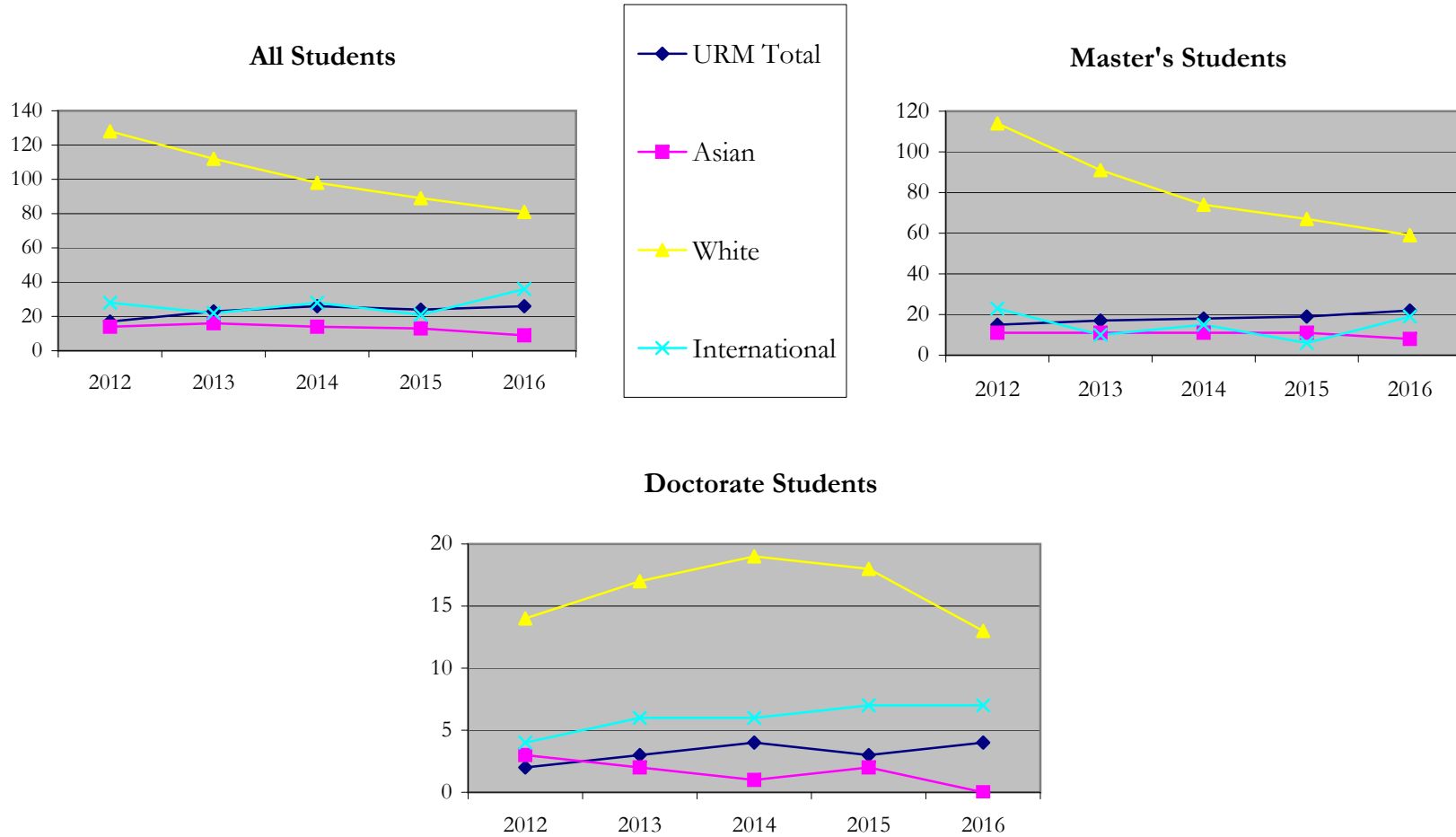
2) Non-Degree & Certificate numbers include IBHE and Campus certificates

# Enrollment

## Total Enrollment by Race/Ethnicity

College of Architecture and the Arts

Fall 2012 - Fall 2016



**Notes:** 1) URM stands for Under-Represented Minority and includes American Indian or Alaska Native; Black or African-American; Hispanic / Latino race/ethnicity groups  
 2) Individual URM groups, Native Hawaiian Pacific Islander, Two or More Races, and Other race/ethnicity categories left off this charts due to relatively low numbers

## Enrollment

### By Student Type, Enrollment Time, and Sex

College of Architecture and the Arts

Fall 2012 - Fall 2016

		Total	New		Continuing		Male		Female		Sex Not Reported	Part-time		Full-time	
			Count	%	Count	%	Count	%	Count	%		Count	%	Count	%
All	2012	195	61	31.3	134	68.7	85	43.6	110	56.4	0	21	10.8	174	89.2
	2013	185	68	36.8	117	63.2	76	41.1	109	58.9	0	17	9.2	168	90.8
	2014	173	63	36.4	110	63.6	58	33.5	115	66.5	0	19	11.0	154	89.0
	2015	156	59	37.8	97	62.2	61	39.1	95	60.9	0	22	14.1	134	85.9
	2016	162	68	42.0	94	58.0	61	37.7	100	61.7	1	12	7.4	150	92.6
Master's	2012	171	57	33.3	114	66.7	79	46.2	92	53.8	0	15	8.8	156	91.2
	2013	141	57	40.4	84	59.6	64	45.4	77	54.6	0	10	7.1	131	92.9
	2014	125	51	40.8	74	59.2	47	37.6	78	62.4	0	10	8.0	115	92.0
	2015	111	46	41.4	65	58.6	49	44.1	62	55.9	0	11	9.9	100	90.1
	2016	116	54	46.6	62	53.4	46	39.7	69	59.5	1	9	7.8	107	92.2
Doctorate	2012	23	3	13.0	20	87.0	6	26.1	17	73.9	0	6	26.1	17	73.9
	2013	28	2	7.1	26	92.9	6	21.4	22	78.6	0	6	21.4	22	78.6
	2014	30	4	13.3	26	86.7	6	20.0	24	80.0	0	9	30.0	21	70.0
	2015	30	3	10.0	27	90.0	7	23.3	23	76.7	0	11	36.7	19	63.3
	2016	24	2	8.3	22	91.7	6	25.0	18	75.0	0	3	12.5	21	87.5
Non-Degree & Certificates	2012	1	1	100.0	0	0.0	0	0.0	1	100.0	0	0	0.0	1	100.0
	2013	16	9	56.3	7	43.8	6	37.5	10	62.5	0	1	6.3	15	93.8
	2014	18	8	44.4	10	55.6	5	27.8	13	72.2	0	0	0.0	18	100.0
	2015	15	10	66.7	5	33.3	5	33.3	10	66.7	0	0	0.0	15	100.0
	2016	22	12	54.5	10	45.5	9	40.9	13	59.1	0	0	0.0	22	100.0

Notes: Non-Degree & Certificate numbers include IBHE and Campus certificates

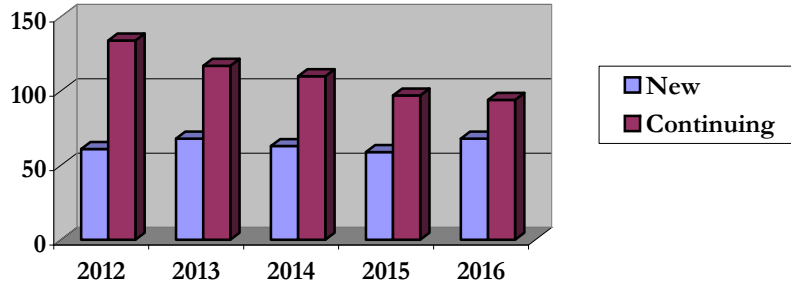
# Enrollment

## By Student Type, Enrollment Time, and Sex (All Students)

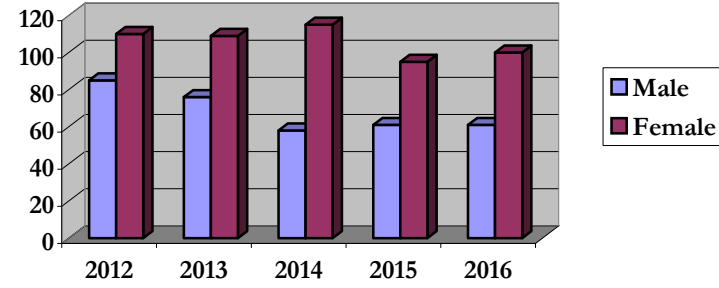
College of Architecture and the Arts

Fall 2012 - Fall 2016

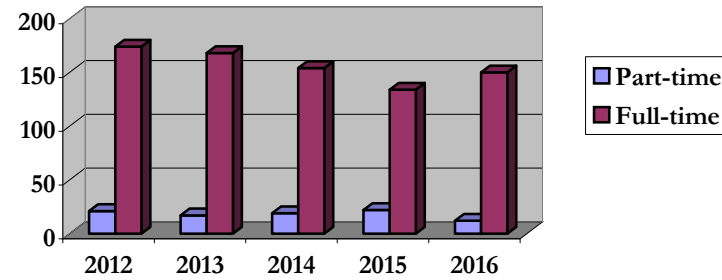
### New and Continuing Enrollment



### Enrollment by Gender



### Enrollment by Student Enrollment Time



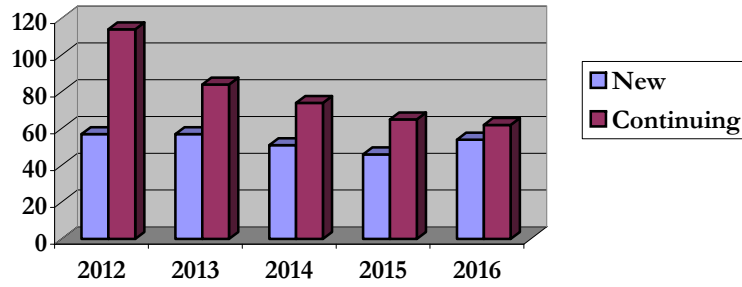
# Enrollment

## By Student Type, Enrollment Time, and Sex (Master's Students)

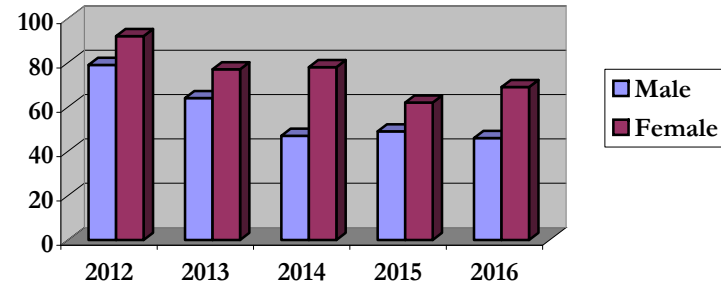
College of Architecture and the Arts

Fall 2012 - Fall 2016

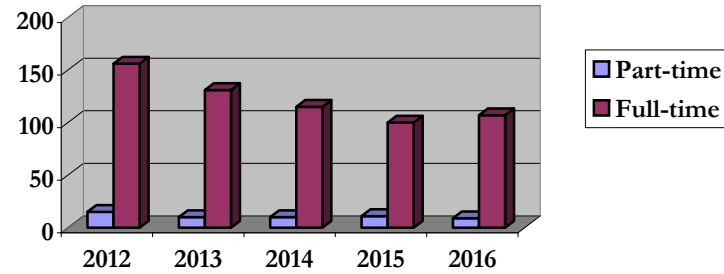
### New and Continuing Enrollment



### Enrollment by Gender



### Enrollment by Student Enrollment Time





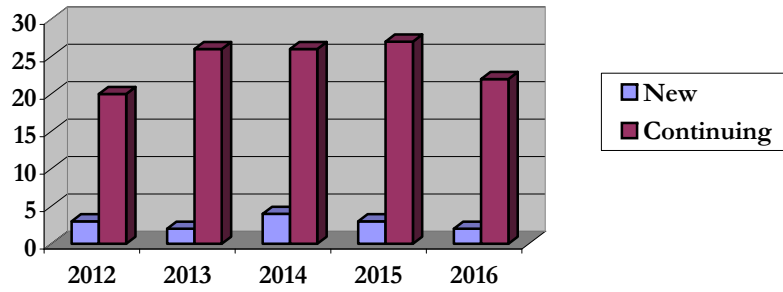
# Enrollment

## By Student Type, Enrollment Time, and Sex (Doctorate Students)

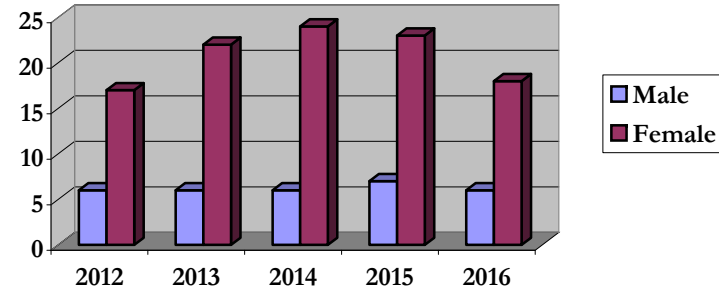
College of Architecture and the Arts

Fall 2012 - Fall 2016

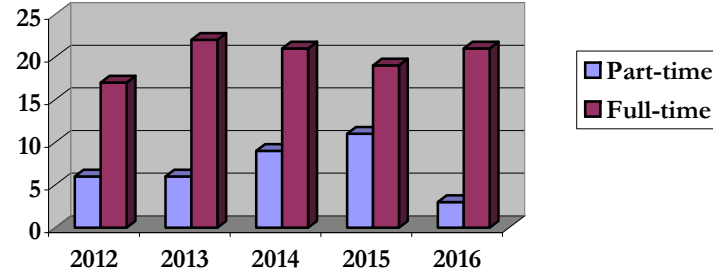
### New and Continuing Enrollment



### Enrollment by Gender



### Enrollment by Student Enrollment Time



**Degrees Conferred**  
**By Race/Ethnicity**

College of Architecture and the Arts

Fall 2012 - Fall 2016

		Total	Under Represented Minorities (URM)								Asian		Native Hawaiian or Pacific Islander		White		Two or More Races		International		Not Reported
			American Indian or Alaska Native		Black or African American		Hispanic / Latino		URM Total												
			Count	%	Count	%	Count	%	Count	%											
All	2011 - 2012	95	0	0.0	1	1.1	8	8.4	9	9.5	6	6.3	0	0.0	72	75.8	0	0.0	7	7.4	1
	2012 - 2013	70	0	0.0	2	2.9	5	7.1	7	10.0	4	5.7	0	0.0	45	64.3	2	2.9	10	14.3	2
	2013 - 2014	72	0	0.0	0	0.0	3	4.2	3	4.2	7	9.7	0	0.0	47	65.3	2	2.8	10	13.9	3
	2014 - 2015	65	0	0.0	2	3.1	10	15.4	12	18.5	4	6.2	0	0.0	34	52.3	1	1.5	12	18.5	2
	2015 - 2016	51	0	0.0	1	2.0	9	17.6	10	19.6	3	5.9	0	0.0	30	58.8	1	2.0	6	11.8	1
Master's	2011 - 2012	94	0	0.0	1	1.1	8	8.5	9	9.6	6	6.4	0	0.0	71	75.5	0	0.0	7	7.4	1
	2012 - 2013	69	0	0.0	2	2.9	5	7.2	7	10.1	4	5.8	0	0.0	45	65.2	2	2.9	9	13.0	2
	2013 - 2014	62	0	0.0	0	0.0	3	4.8	3	4.8	5	8.1	0	0.0	45	72.6	1	1.6	5	8.1	3
	2014 - 2015	56	0	0.0	2	3.6	9	16.1	11	19.6	3	5.4	0	0.0	30	53.6	1	1.8	9	16.1	2
	2015 - 2016	40	0	0.0	1	2.5	7	17.5	8	20.0	3	7.5	0	0.0	24	60.0	1	2.5	3	7.5	1
Doctorate	2011 - 2012	1	0	0.0	0	0.0	0	0.0	0	0.0	0	0.0	0	0.0	1	100.0	0	0.0	0	0.0	0
	2012 - 2013	1	0	0.0	0	0.0	0	0.0	0	0.0	0	0.0	0	0.0	0	0.0	0	0.0	1	100.0	0
	2013 - 2014	3	0	0.0	0	0.0	0	0.0	0	0.0	1	33.3	0	0.0	1	33.3	0	0.0	1	33.3	0
	2014 - 2015	2	0	0.0	0	0.0	0	0.0	0	0.0	0	0.0	0	0.0	2	100.0	0	0.0	0	0.0	0
	2015 - 2016	6	0	0.0	0	0.0	0	0.0	0	0.0	0	0.0	0	0.0	5	83.3	0	0.0	1	16.7	0
Certificate	2011 - 2012	0	0	0.0	0	0.0	0	0.0	0	0.0	0	0.0	0	0.0	0	0.0	0	0.0	0	0.0	0
	2012 - 2013	0	0	0.0	0	0.0	0	0.0	0	0.0	0	0.0	0	0.0	0	0.0	0	0.0	0	0.0	0
	2013 - 2014	7	0	0.0	0	0.0	0	0.0	0	0.0	1	14.3	0	0.0	1	14.3	1	14.3	4	57.1	0
	2014 - 2015	7	0	0.0	0	0.0	1	14.3	1	14.3	1	14.3	0	0.0	2	28.6	0	0.0	3	42.9	0
	2015 - 2016	5	0	0.0	0	0.0	2	40.0	2	40.0	0	0.0	0	0.0	1	20.0	0	0.0	2	40.0	0

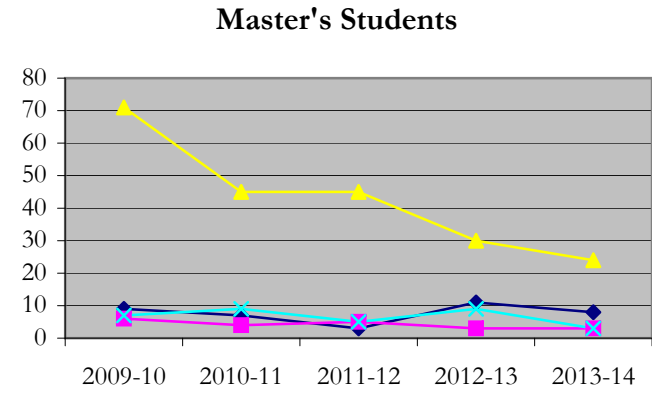
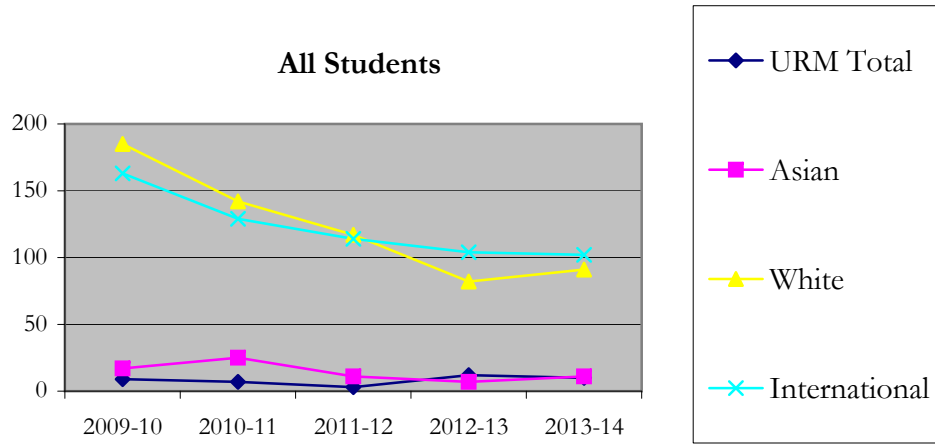
**Notes:** 1) The "Native Hawaiian or Pacific Islander" and "Two or More Races" race/ethnicity categories were added in 2010 to follow State & Federal changes in higher education enrollment reporting.

2) Each row represents a fiscal year, beginning with Summer term and ending with Spring.

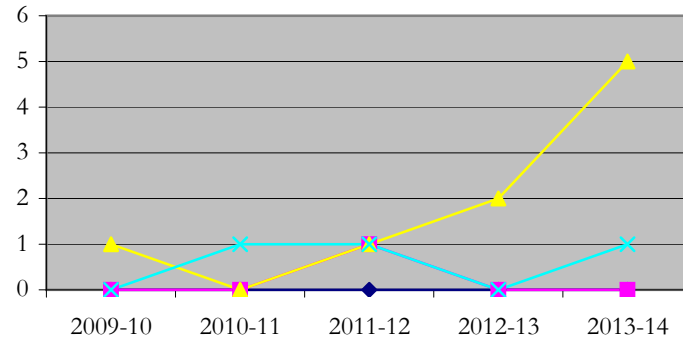
3) Non-Degree & Certificate numbers include IBHE and Campus certificates

**Degrees Conferred**  
**By Race/Ethnicity**

College of Architecture and the Arts  
 Fall 2012 - Fall 2016



**Doctorate Students**



## Degrees Conferred

### By Sex

College of Architecture and the Arts

Fall 2012 - Fall 2016

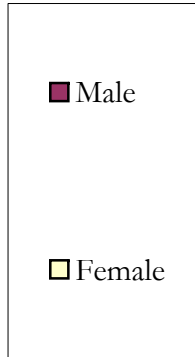
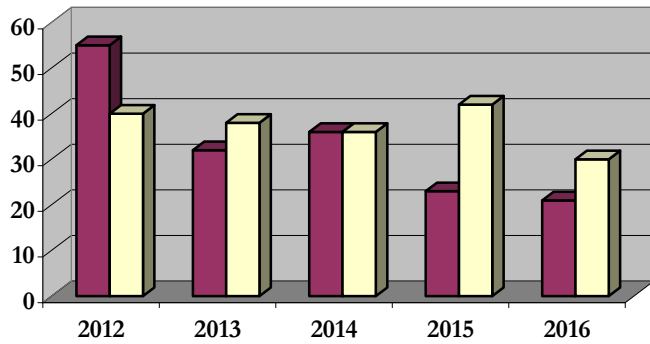
		Total	Male		Female		Not Reported
			Count	%	Count	%	
All	2011 - 2012	95	55	57.9	40	42.1	0
	2012 - 2013	70	32	45.7	38	54.3	0
	2013 - 2014	72	36	50.0	36	50.0	0
	2014 - 2015	65	23	35.4	42	64.6	0
	2015 - 2016	51	21	41.2	30	58.8	0
Master's	2011 - 2012	94	55	58.5	39	41.5	0
	2012 - 2013	69	31	44.9	38	55.1	0
	2013 - 2014	62	32	51.6	30	48.4	0
	2014 - 2015	56	21	37.5	35	62.5	0
	2015 - 2016	40	17	42.5	23	57.5	0
Doctorate	2011 - 2012	1	0	0.0	1	100.0	0
	2012 - 2013	1	1	100.0	0	0.0	0
	2013 - 2014	3	1	33.3	2	66.7	0
	2014 - 2015	2	0	0.0	2	100.0	0
	2015 - 2016	6	2	33.3	4	66.7	0
Certificate	2011 - 2012	0	0	0.0	0	0.0	0
	2012 - 2013	0	0	0.0	0	0.0	0
	2013 - 2014	7	3	42.9	4	57.1	0
	2014 - 2015	7	2	28.6	5	71.4	0
	2015 - 2016	5	2	40.0	3	60.0	0

**Note:** Non-Degree & Certificate numbers include IBHE and Campus certificates

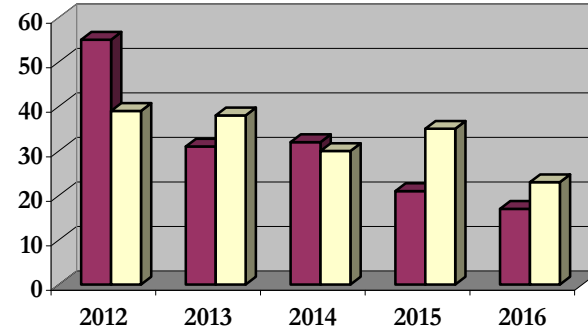
# Degrees Conferred By Sex (continued)

College of Architecture and the Arts  
Fall 2012 - Fall 2016

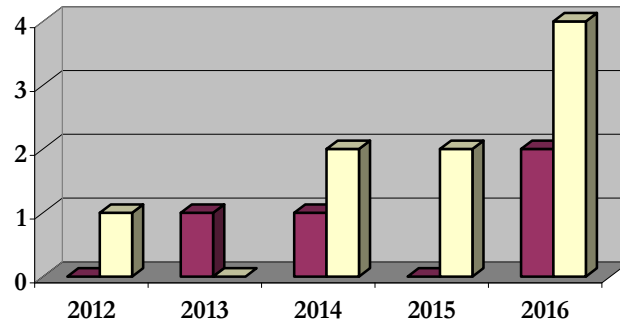
### All Students



### Master's Students



### Doctorate Students



## **Appendix A**

College of Architecture and the Arts

Fall 2012 - Fall 2016

### **List of program codes included in this document**

20FS0148MDES

20FS0148MFA

20FS0148NDEG

20FS0151MFA

20FS0152MDES

20FS0152MFA

20FS0152NDEG

20FS0249MARC

20FS0249NDEG

20FS0250MA

20FS0250NDEG

20FS0250PHD

20FS1044MA

20FS1205MFA

20FS1257MFA

20FS1257NDEG

20FS1715MFA

20FS1715NDEG

20FS4095MFA

20FS5046MS

20FS5127MS

20FS5245MA

20FS5256MFA

20FS5265MA

21FS0148MDES

21FS0148MFA

**Note 1:** Program codes are sorted by alphabetical order in column-wise fashion

**Note 2:** Program codes highlighted in yellow did not have applications, enrollment, nor degrees conferred in the covered period