

Matriculation

Diversity Pipeline

Studio_Arts_MFA [20FS1715MFA]

Fall 2013 through Fall 2017

Fall Semester Year	Applied					Admitted					Non-URM Admitted to Applied Yield %	URM Admitted to Applied Yield %	New Enrollment					Non-URM Enrolled to Admitted Yield %	URM Enrolled to Admitted Yield %	Total Enrollment				
	Grand Total	Non-URM Total		URM Total		Grand Total	Non-URM Total		URM Total				Grand Total	Non-URM Total		URM Total				Grand Total	Non-URM Total		URM Total	
		Count	%	Count	%		Count	%	Count	%				Count	%	Count	%				Count	%	Count	%
	Count	%	Count	%	Count	%	Count	%	Count	%			Count	%	Count	%	Count			%	Count	%	Count	%
2013	82	70	85.4%	12	14.6%	5	4	80.0%	1	20.0%	5.7%	8.3%	3	2	66.7%	1	33.3%	50.0%	100.0%	13	12	92.3%	1	7.7%
2014	52	46	88.5%	6	11.5%	7	6	85.7%	1	14.3%	13.0%	16.7%	6	5	83.3%	1	16.7%	83.3%	100.0%	9	7	77.8%	2	22.2%
2015	48	42	87.5%	6	12.5%	9	8	88.9%	1	11.1%	19.0%	16.7%	6	5	83.3%	1	16.7%	62.5%	100.0%	12	10	83.3%	2	16.7%
2016	62	57	91.9%	5	8.1%	17	16	94.1%	1	5.9%	28.1%	20.0%	10	10	100.0%	0	0.0%	62.5%	0.0%	15	14	93.3%	1	6.7%
2017	46	37	80.4%	9	19.6%	8	6	75.0%	2	25.0%	16.2%	22.2%	6	4	66.7%	2	33.3%	66.7%	100.0%	15	13	86.7%	2	13.3%
Average	58	50	86.9%	8	13.1%	9	8	87.0%	1	13.0%	15.9%	15.8%	6	5	83.9%	1	16.1%	65.0%	83.3%	13	11	87.5%	1.6	12.5%

Note: URM stands for Under-Represented Minority and includes American Indian or Alaska Native; Black or African-American; Hispanic / Latino race/ethnicity groups

Applications, Admission, & New Enrollment Yields

by Race/Ethnicity & Gender

Studio_Arts_MFA [20FS1715MFA]

Fall 2013 through Fall 2017

	Fall Semester Year	Total		Under Represented Minorities (URM)								Asian		Native Hawaiian or Pacific Islander		White		Two or More Races		International		Race/Eth Not Reported		Male		Female	
				American Indian or Alaska Native		Black or African American		Hispanic / Latino		URM Total																	
		Count	% Yield	Count	% Yield	Count	% Yield	Count	% Yield	Count	% Yield	Count	% Yield	Count	% Yield	Count	% Yield	Count	% Yield	Count	% Yield	Count	% Yield	Count	% Yield	Count	% Yield
Applied	2013	82		0		4		8		12		5		0		44		4		12		5		30		50	
	2014	52		0		0		6		6		5		0		34		1		3		3		20		32	
	2015	48		0		1		5		6		2		0		30		0		6		4		15		31	
	2016	62		0		2		3		5		4		0		42		1		8		2		23		36	
	2017	46		0		1		8		9		2		0		19		0		12		4		10		34	
		Count	% Yield	Count	% Yield	Count	% Yield	Count	% Yield	Count	% Yield	Count	% Yield	Count	% Yield	Count	% Yield	Count	% Yield	Count	% Yield	Count	% Yield	Count	% Yield	Count	% Yield
Admitted	2013	5	6.1	0	0.0	1	25.0	0	0.0	1	8.3	0	0.0	0	0.0	4	9.1	0	0.0	0	0.0	0		3	10.0	2	4.0
	2014	7	13.5	0	0.0	0	0.0	1	16.7	1	16.7	0	0.0	0	0.0	4	11.8	0	0.0	1	33.3	1		4	20.0	3	9.4
	2015	9	18.8	0	0.0	0	0.0	1	20.0	1	16.7	0	0.0	0	0.0	6	20.0	0	0.0	2	33.3	0		4	26.7	5	16.1
	2016	17	27.4	0	0.0	1	50.0	0	0.0	1	20.0	0	0.0	0	0.0	12	28.6	0	0.0	4	50.0	0		4	17.4	11	30.6
	2017	8	17.4	0	0.0	0	0.0	2	25.0	2	22.2	0	0.0	0	0.0	5	26.3	0	0.0	1	8.3	0		4	40.0	4	11.8
		Count	% Yield	Count	% Yield	Count	% Yield	Count	% Yield	Count	% Yield	Count	% Yield	Count	% Yield	Count	% Yield	Count	% Yield	Count	% Yield	Count	% Yield	Count	% Yield	Count	% Yield
Enrolled	2013	3	60.0	0	0.0	1	100.0	0	0.0	1	100.0	0	0.0	0	0.0	2	50.0	0	0.0	0	0.0	0		1	33.3	2	100.0
	2014	6	85.7	0	0.0	0	0.0	1	100.0	1	100.0	0	0.0	0	0.0	4	100.0	0	0.0	1	100.0	0		3	75.0	3	100.0
	2015	6	66.7	0	0.0	0	0.0	1	100.0	1	100.0	0	0.0	0	0.0	4	66.7	0	0.0	1	50.0	0		4	100.0	2	40.0
	2016	10	58.8	0	0.0	0	0.0	0	0.0	0	0.0	0	0.0	0	0.0	7	58.3	0	0.0	3	75.0	0		2	50.0	7	63.6
	2017	6	75.0	0	0.0	0	0.0	2	100.0	2	100.0	0	0.0	0	0.0	3	60.0	0	0.0	1	100.0	0		3	75.0	3	75.0

Notes:

- 1) URM stands for Under-Represented Minority and includes American Indian or Alaska Native; Black or African-American; Hispanic / Latino race/ethnicity groups
- 2) Unreported Gender identification is not shown; Male and Female total may not match Total
- 3) In rare situations, the "% Yield" columns may be greater than 100. There are three potential reasons for this:
 - a) Students that received Graduate College approved transfers may not have an admission record for the program that they enrolled into.
 - b) Students with a secondary curriculum enrollment may not have an admission record for that secondary program.
 - c) Students who were newly enrolled in the summer term prior to the fall were added to the fall new enrollment totals.

Applications, Admission, & New Enrollment Yields, cont.

by Race/Ethnicity & Gender

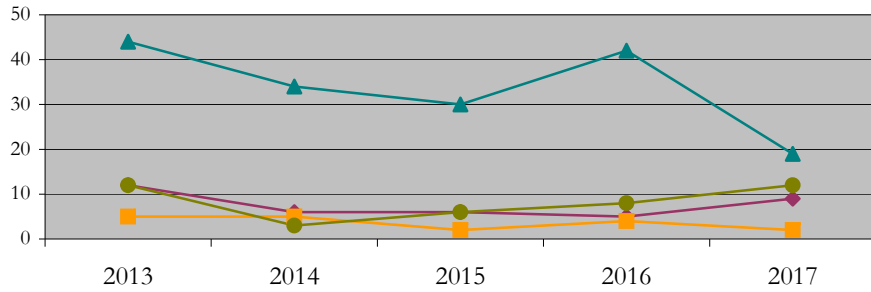
Studio_Arts_MFA [20FS1715MFA]

Fall 2013 through Fall 2017

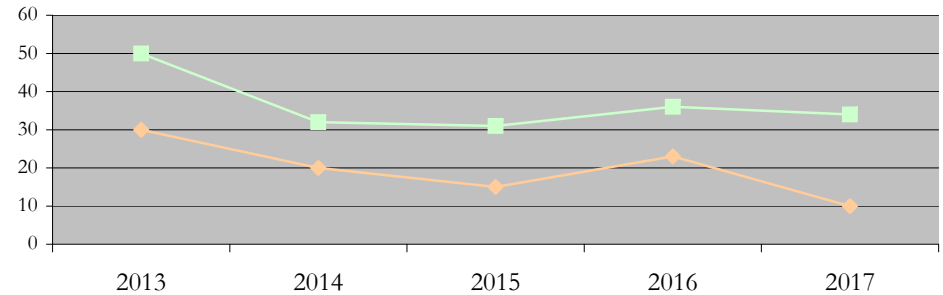
URM Total Asian White International

Male Female

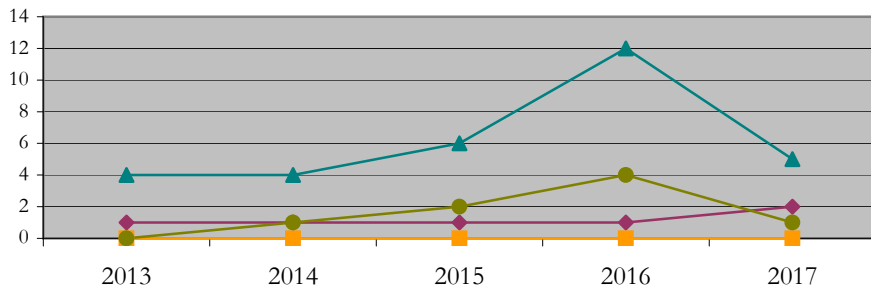
Applications by Race/Ethnicity



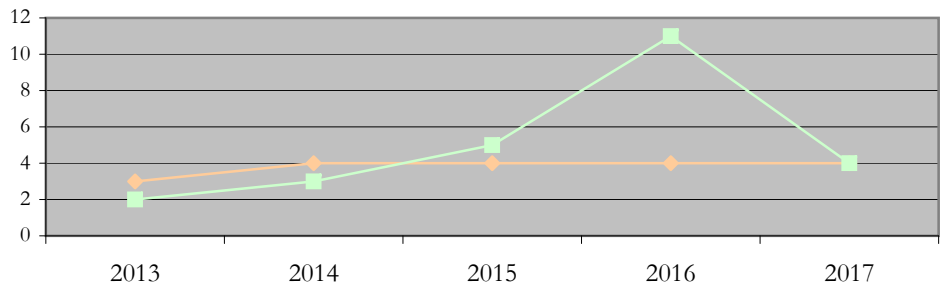
Applications by Gender



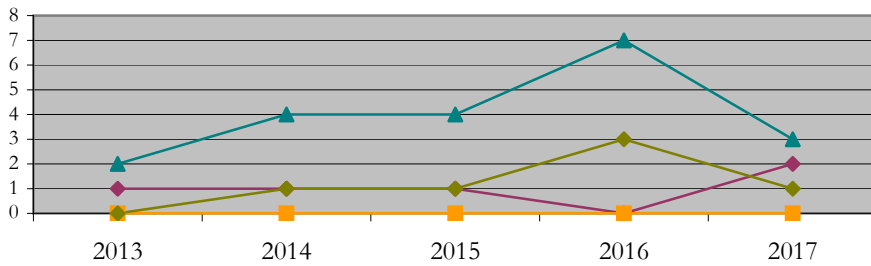
Admissions by Race/Ethnicity



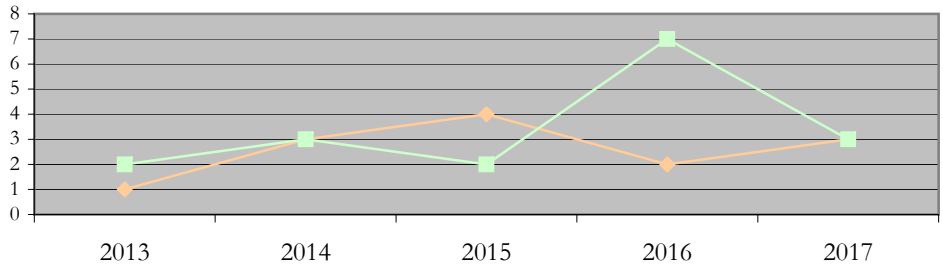
Admissions by Gender



New Enrollments by Race/Ethnicity



New Enrollments by Gender



Notes: 1) URM stands for Under-Represented Minority and includes American Indian or Alaska Native; Black or African-American; Hispanic / Latino race/ethnicity groups
 2) Individual URM groups, Native Hawaiian Pacific Islander, Two or More Races, and Other race/ethnicity categories left off these charts due to relatively low numbers

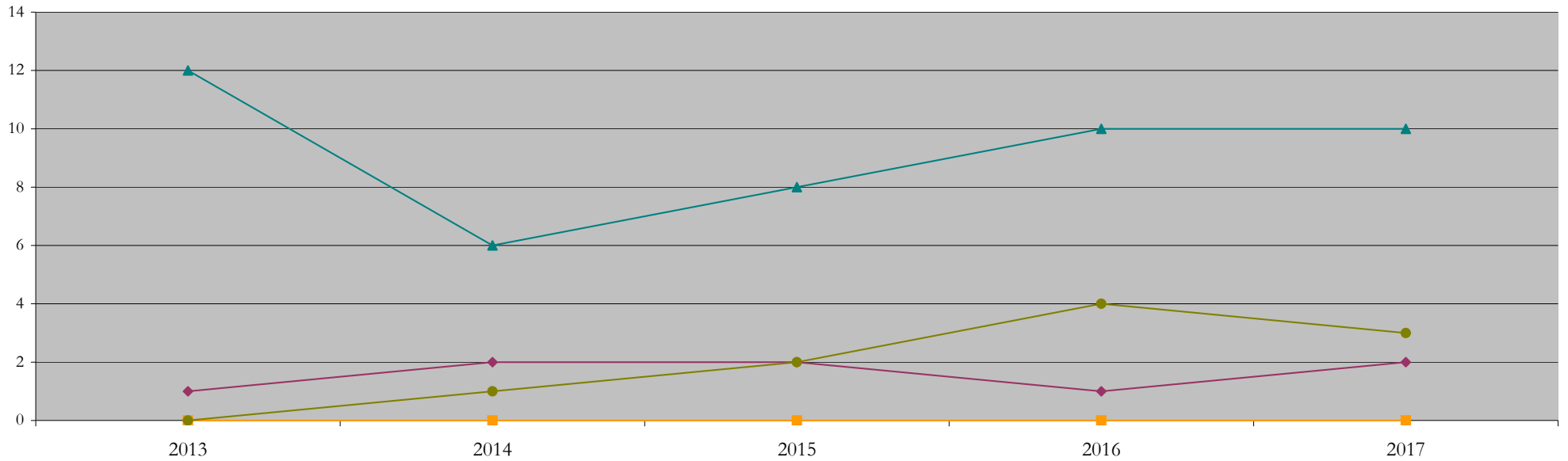
Total Enrollment (includes secondary curriculum)

by Race/Ethnicity

Studio_Arts_MFA [20FS1715MFA]

Fall 2013 through Fall 2017

Fall Semester Year	Total	Under Represented Minorities (URM)										Asian	Native Hawaiian or Pacific Islander	White	Two or More Races	International	Race/Eth Not Reported			
		American Indian or Alaska Native		Black or African American		Hispanic / Latino		URM Total												
		Count	%	Count	%	Count	%	Count	%											
2013	13	0	0.0	1	7.7	0	0.0	1	7.7	0	0.0	0	0.0	12	92.3	0	0.0	0	0.0	0
2014	9	0	0.0	1	11.1	1	11.1	2	22.2	0	0.0	0	0.0	6	66.7	0	0.0	1	11.1	0
2015	12	0	0.0	0	0.0	2	16.7	2	16.7	0	0.0	0	0.0	8	66.7	0	0.0	2	16.7	0
2016	15	0	0.0	0	0.0	1	6.7	1	6.7	0	0.0	0	0.0	10	66.7	0	0.0	4	26.7	0
2017	15	0	0.0	0	0.0	2	13.3	2	13.3	0	0.0	0	0.0	10	66.7	0	0.0	3	20.0	0



Notes: 1) URM stands for Under-Represented Minority and includes American Indian or Alaska Native; Black or African-American; Hispanic / Latino race/ethnicity groups
 2) Individual URM groups, Native Hawaiian Pacific Islander, Two or More Races, and Other race/ethnicity categories left off this chart due to relatively low numbers

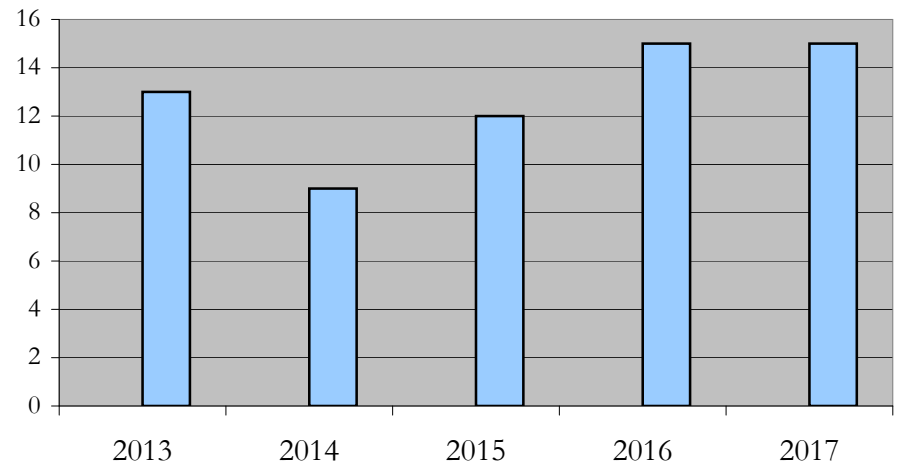
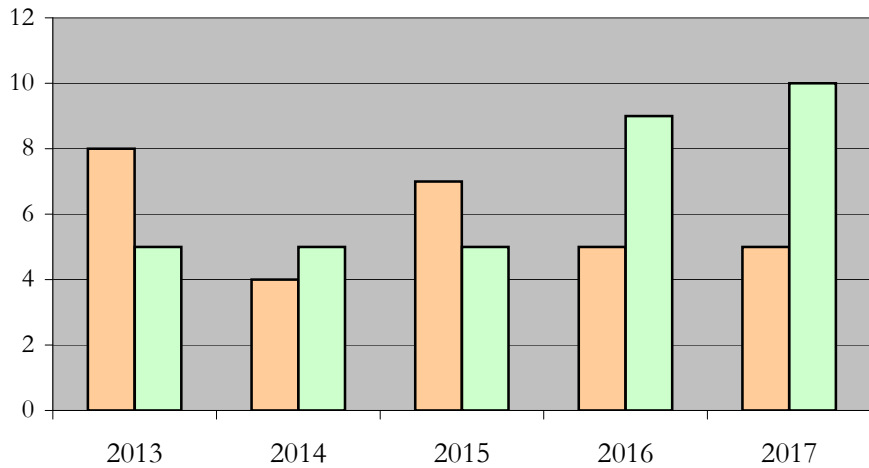
Total Enrollment (includes secondary curriculum)

by Student Type, Gender, and Enrollment Time

Studio_Arts_MFA [20FS1715MFA]

Fall 2013 through Fall 2017

Fall Semester Year	Total	New		Continuing		Male		Female		Gender Not Reported	Part-time		Full-time	
		Count	%	Count	%	Count	%	Count	%	Count	Count	%	Count	%
2013	13	3	23.1	10	76.9	8	61.5	5	38.5	0	0	0.0	13	100.0
2014	9	6	66.7	3	33.3	4	44.4	5	55.6	0	0	0.0	9	100.0
2015	12	6	50.0	6	50.0	7	58.3	5	41.7	0	0	0.0	12	100.0
2016	15	10	66.7	5	33.3	5	33.3	9	60.0	1	0	0.0	15	100.0
2017	15	6	40.0	9	60.0	5	33.3	10	66.7	0	0	0.0	15	100.0



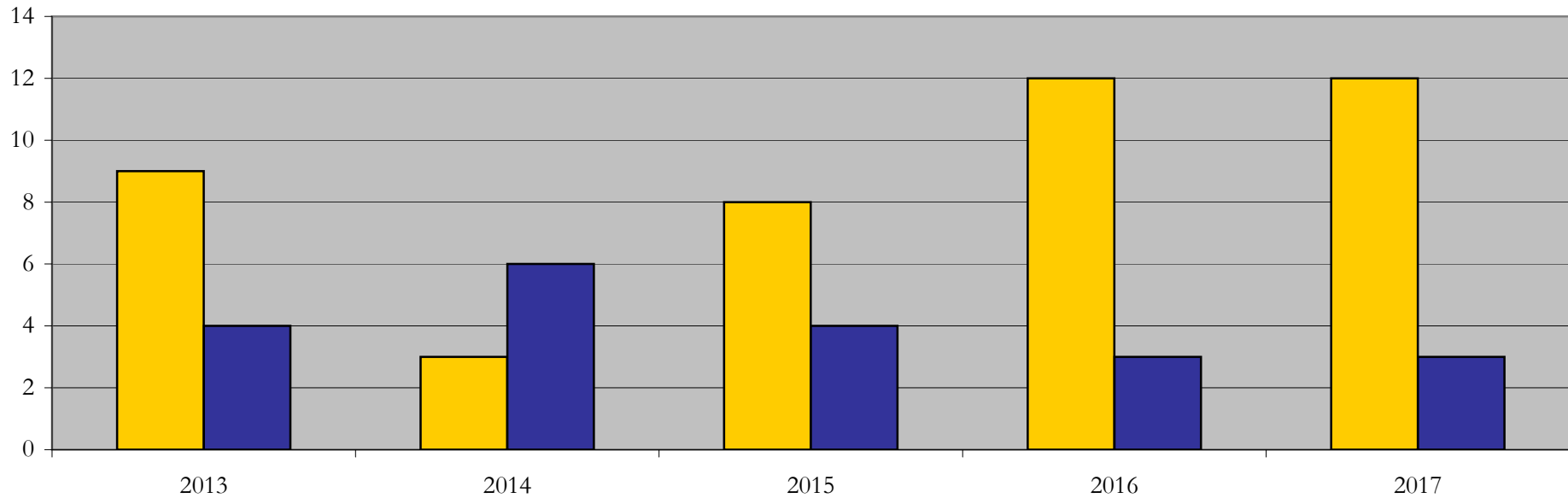
Enrollment & Degrees Conferred

by Primary/Secondary, Average Age, State Residency

Studio_Arts_MFA [20FS1715MFA]

Fall 2013 through Fall 2017

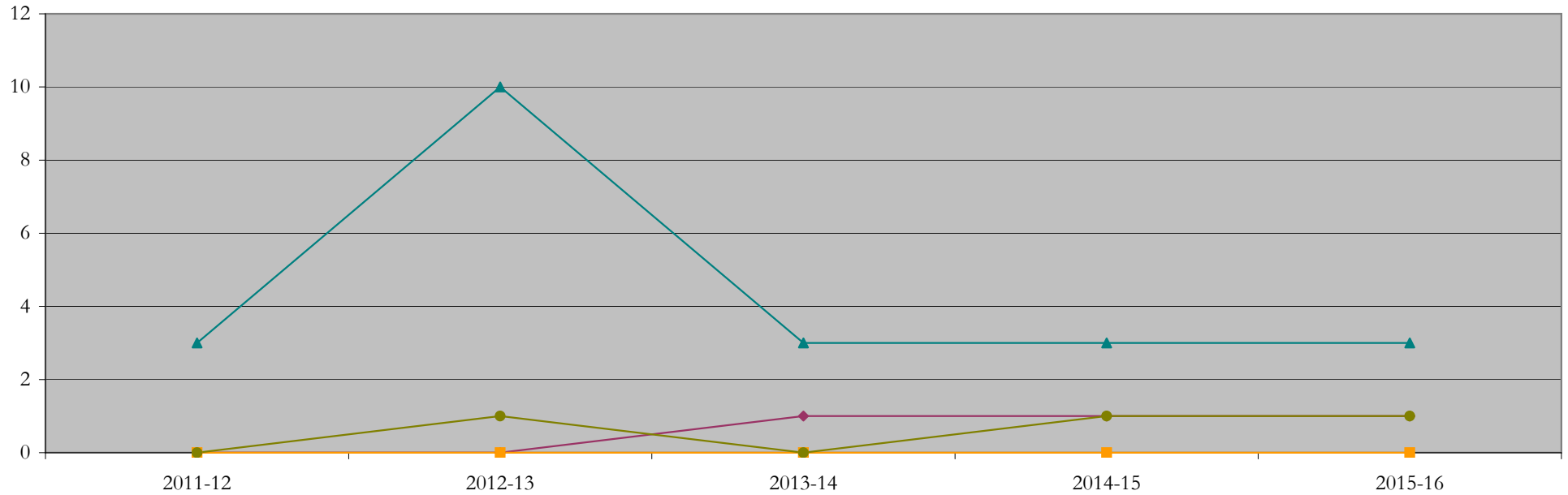
Fall Semester Year	Enrollment			Average Age			State Residency of Total Enrollment					
	Total	Primary	Secondary	Fall New Enrollment	Fall Continuing Enrollment	Academic Year Graduating Class	Residents			Non-Residents		
							Total Enrollment	New Enrollment	Continuing Enrollment	Total Enrollment	New Enrollment	Continuing Enrollment
2013	13	13	0	32	29	34	9	3	6	4	0	4
2014	9	9	0	27	33	29	3	1	2	6	5	1
2015	12	12	0	30	28	28	8	5	3	4	1	3
2016	15	15	0	30	31	27	12	7	5	3	3	0
2017	15	15	0	28	31	30	12	4	8	3	2	1



Degrees Conferred by Race/Ethnicity

Studio_Arts_MFA [20FS1715MFA]
AY2011-12 through 2015-16

Academic Year	Total	Under Represented Minorities (URM)								Asian		Native Hawaiian or Pacific		White		Two or More Races		International		Not Reported
		American Indian or Alaska Native		Black or African American		Hispanic / Latino		URM Total		Count	%	Count	%	Count	%	Count	%	Count	%	
		Count	%	Count	%	Count	%	Count	%											
2012 - 2013	3	0	0.0	0	0.0	0	0.0	0	0.0	0	0.0	0	0.0	3	100.0	0	0.0	0	0.0	0
2013 - 2014	11	0	0.0	0	0.0	0	0.0	0	0.0	0	0.0	0	0.0	10	90.9	0	0.0	1	9.1	0
2014 - 2015	4	0	0.0	1	25.0	0	0.0	1	25.0	0	0.0	0	0.0	3	75.0	0	0.0	0	0.0	0
2015 - 2016	5	0	0.0	0	0.0	1	20.0	1	20.0	0	0.0	0	0.0	3	60.0	0	0.0	1	20.0	0
2016 - 2017	5	0	0.0	0	0.0	1	20.0	1	20.0	0	0.0	0	0.0	3	60.0	0	0.0	1	20.0	0



Notes: 1) URM stands for Under-Represented Minority and includes American Indian or Alaska Native; Black or African-American; Hispanic / Latino race/ethnicity groups
2) Individual URM groups, Native Hawaiian Pacific Islander, Two or More Races, and Other race/ethnicity categories left off this chart due to relatively low numbers

Degrees Conferred

by Gender

Studio_Arts_MFA [20FS1715MFA]

AY2011-12 through 2015-16

Academic Year	Total	Male		Female		Not Reported
		Count	%	Count	%	
2012 - 2013	3	2	66.7	1	33.3	0
2013 - 2014	11	7	63.6	4	36.4	0
2014 - 2015	4	2	50.0	2	50.0	0
2015 - 2016	5	3	60.0	2	40.0	0
2016 - 2017	5	3	60.0	2	40.0	0

