

# Matriculation

## Diversity Pipeline

Architecture\_MARCH [20FS0249MARC]

Fall 2013 through Fall 2017

Fall Semester Year	Applied					Admitted					Non-URM Admitted to Applied Yield %	URM Admitted to Applied Yield %	New Enrollment					Non-URM Enrolled to Admitted Yield %	URM Enrolled to Admitted Yield %	Total Enrollment				
	Grand Total	Non-URM Total		URM Total		Grand Total	Non-URM Total		URM Total				Grand Total	Non-URM Total		URM Total				Grand Total	Non-URM Total		URM Total	
		Count	%	Count	%		Count	%	Count	%				Count	%	Count	%				Count	%	Count	%
	Count	%	Count	%	Count	%	Count	%	Count	%			Count	%	Count	%	Count			%	Count	%	Count	%
2013	226	202	89.4%	24	10.6%	118	110	93.2%	8	6.8%	54.5%	33.3%	23	21	91.3%	2	8.7%	19.1%	25.0%	67	58	86.6%	9	13.4%
2014	160	143	89.4%	17	10.6%	95	84	88.4%	11	11.6%	58.7%	64.7%	19	16	84.2%	3	15.8%	19.0%	27.3%	55	46	83.6%	9	16.4%
2015	134	122	91.0%	12	9.0%	78	71	91.0%	7	9.0%	58.2%	58.3%	15	14	93.3%	1	6.7%	19.7%	14.3%	45	40	88.9%	5	11.1%
2016	140	120	85.7%	20	14.3%	94	81	86.2%	13	13.8%	67.5%	65.0%	22	18	81.8%	4	18.2%	22.2%	30.8%	48	42	87.5%	6	12.5%
2017	143	129	90.2%	14	9.8%	78	71	91.0%	7	9.0%	55.0%	50.0%	9	6	66.7%	3	33.3%	8.5%	42.9%	38	30	78.9%	8	21.1%
<b>Average</b>	<b>161</b>	<b>143</b>	<b>89.2%</b>	<b>17</b>	<b>10.8%</b>	<b>93</b>	<b>83</b>	<b>90.1%</b>	<b>9</b>	<b>9.9%</b>	<b>58.2%</b>	<b>52.9%</b>	<b>18</b>	<b>15</b>	<b>85.2%</b>	<b>3</b>	<b>14.8%</b>	<b>18.0%</b>	<b>28.3%</b>	<b>51</b>	<b>43</b>	<b>85.4%</b>	<b>7.4</b>	<b>14.6%</b>

**Note:** URM stands for Under-Represented Minority and includes American Indian or Alaska Native; Black or African-American; Hispanic / Latino race/ethnicity groups

# Applications, Admission, & New Enrollment Yields

## by Race/Ethnicity & Gender

Architecture\_MARCH [20FS0249MARC]

Fall 2013 through Fall 2017

	Fall Semester Year	Total	Under Represented Minorities (URM)										Race/Eth Not Reported	Male	Female											
			American Indian or Alaska Native		Black or African American		Hispanic / Latino		URM Total		Asian					Native Hawaiian or Pacific Islander		White		Two or More Races		International				
		Count	% Yield	Count	% Yield	Count	% Yield	Count	% Yield	Count	% Yield	Count	% Yield	Count	% Yield	Count	% Yield	Count	% Yield	Count	% Yield	Count	% Yield	Count	% Yield	
Applied	2013	226		0		7		17		24		17		0		115		5		52		13		110		115
	2014	160		0		3		14		17		12		0		74		3		45		9		78		81
	2015	134		0		4		8		12		10		0		57		3		45		7		72		61
	2016	140		0		1		19		20		9		0		46		2		60		3		67		72
	2017	143		0		2		12		14		5		0		59		1		64		0		65		78
Admitted	2013	118	52.2	0	0.0	1	14.3	7	41.2	8	33.3	7	41.2	0	0.0	72	62.6	4	80.0	21	40.4	6	59	53.6	58	50.4
	2014	95	59.4	0	0.0	1	33.3	10	71.4	11	64.7	10	83.3	0	0.0	49	66.2	2	66.7	18	40.0	5	42	53.8	52	64.2
	2015	78	58.2	0	0.0	3	75.0	4	50.0	7	58.3	8	80.0	0	0.0	39	68.4	3	100.0	16	35.6	5	43	59.7	35	57.4
	2016	94	67.1	0	0.0	1	100.0	12	63.2	13	65.0	6	66.7	0	0.0	37	80.4	2	100.0	34	56.7	2	44	65.7	49	68.1
	2017	78	54.5	0	0.0	1	50.0	6	50.0	7	50.0	3	60.0	0	0.0	34	57.6	1	100.0	33	51.6	0	32	49.2	46	59.0
Enrolled	2013	23	19.5	0	0.0	1	100.0	1	14.3	2	25.0	3	42.9	0	0.0	16	22.2	1	25.0	1	4.8	0	16	27.1	7	12.1
	2014	19	20.0	0	0.0	0	0.0	3	30.0	3	27.3	4	40.0	0	0.0	10	20.4	0	0.0	2	11.1	0	10	23.8	9	17.3
	2015	15	19.2	0	0.0	0	0.0	1	25.0	1	14.3	1	12.5	0	0.0	10	25.6	1	33.3	0	0.0	2	8	18.6	7	20.0
	2016	22	23.4	0	0.0	0	0.0	4	33.3	4	30.8	1	16.7	0	0.0	9	24.3	0	0.0	8	23.5	0	10	22.7	12	24.5
	2017	9	11.5	0	0.0	1	100.0	2	33.3	3	42.9	0	0.0	0	0.0	6	17.6	0	0.0	0	0.0	0	5	15.6	4	8.7

**Notes:**

- 1) URM stands for Under-Represented Minority and includes American Indian or Alaska Native; Black or African-American; Hispanic / Latino race/ethnicity groups
- 2) Unreported Gender identification is not shown; Male and Female total may not match Total
- 3) In rare situations, the "% Yield" columns may be greater than 100. There are three potential reasons for this:
  - a) Students that received Graduate College approved transfers may not have an admission record for the program that they enrolled into.
  - b) Students with a secondary curriculum enrollment may not have an admission record for that secondary program.
  - c) Students who were newly enrolled in the summer term prior to the fall were added to the fall new enrollment totals.

# Applications, Admission, & New Enrollment Yields, cont. by Race/Ethnicity & Gender

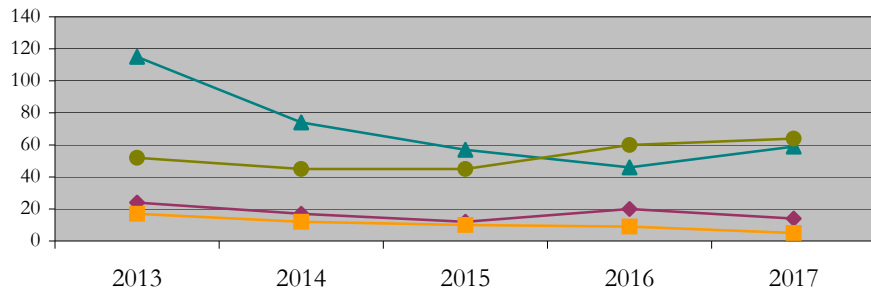
Architecture\_MARCH [20FS0249MARC]

Fall 2013 through Fall 2017

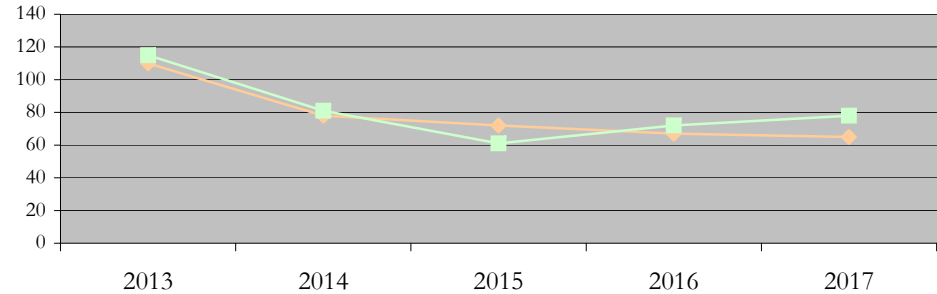
URM Total Asian White International

Male Female

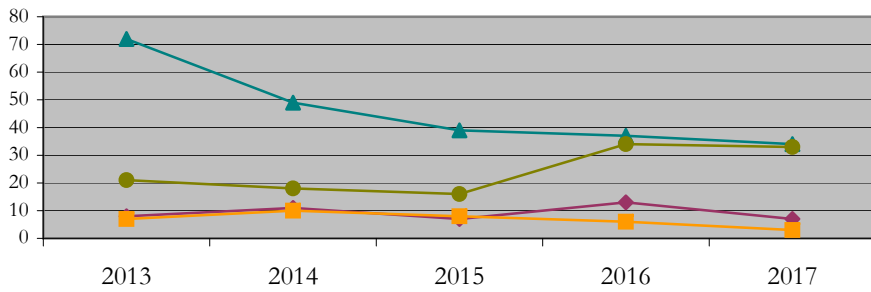
Applications by Race/Ethnicity



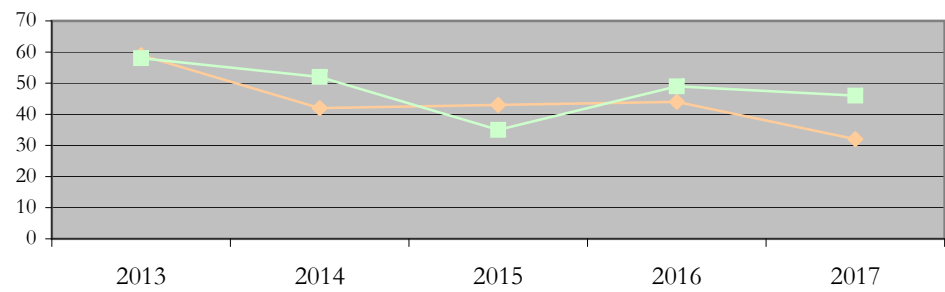
Applications by Gender



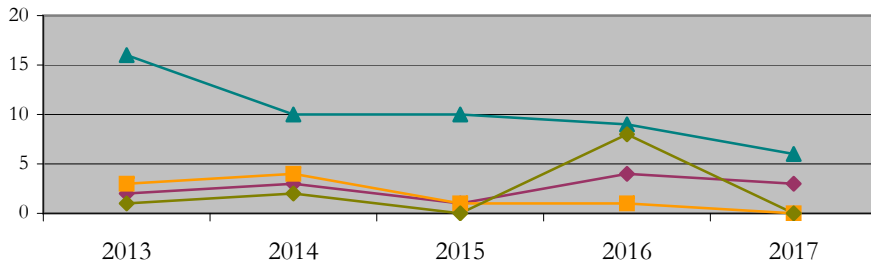
Admissions by Race/Ethnicity



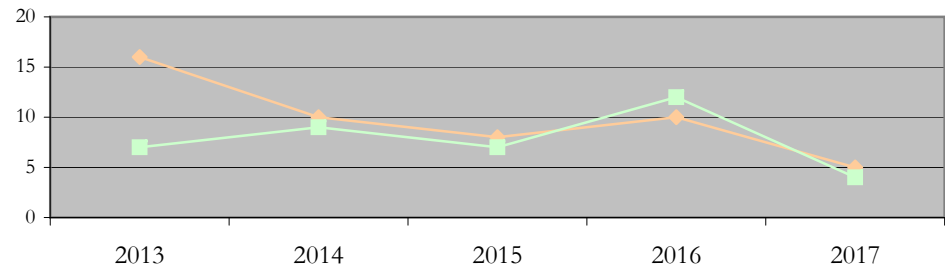
Admissions by Gender



New Enrollments by Race/Ethnicity



New Enrollments by Gender



**Notes:** 1) URM stands for Under-Represented Minority and includes American Indian or Alaska Native; Black or African-American; Hispanic / Latino race/ethnicity groups  
2) Individual URM groups, Native Hawaiian Pacific Islander, Two or More Races, and Other race/ethnicity categories left off these charts due to relatively low numbers

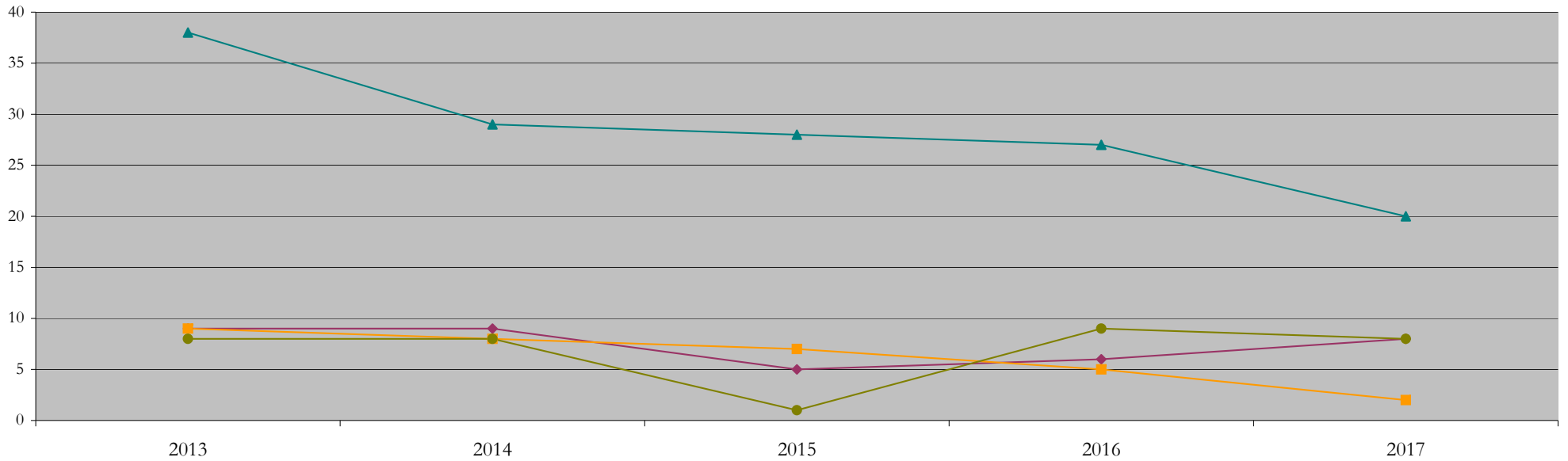
**Total Enrollment (includes secondary curriculum)**

**by Race/Ethnicity**

Architecture\_MARCH [20FS0249MARC]

Fall 2013 through Fall 2017

Fall Semester Year	Total	Under Represented Minorities (URM)																		
		American Indian or Alaska Native		Black or African American		Hispanic / Latino		URM Total		Asian		Native Hawaiian or Pacific Islander		White		Two or More Races		International		Race/Eth Not Reported
		Count	%	Count	%	Count	%	Count	%	Count	%	Count	%	Count	%	Count	%	Count	%	Count
2013	67	0	0.0	1	1.5	8	11.9	9	13.4	9	13.4	0	0.0	38	56.7	2	3.0	8	11.9	1
2014	55	0	0.0	1	1.8	8	14.5	9	16.4	8	14.5	0	0.0	29	52.7	1	1.8	8	14.5	0
2015	45	0	0.0	1	2.2	4	8.9	5	11.1	7	15.6	0	0.0	28	62.2	2	4.4	1	2.2	2
2016	48	0	0.0	0	0.0	6	12.5	6	12.5	5	10.4	0	0.0	27	56.3	1	2.1	9	18.8	0
2017	38	0	0.0	1	2.6	7	18.4	8	21.1	2	5.3	0	0.0	20	52.6	0	0.0	8	21.1	0



**Notes:** 1) URM stands for Under-Represented Minority and includes American Indian or Alaska Native; Black or African-American; Hispanic / Latino race/ethnicity groups  
 2) Individual URM groups, Native Hawaiian Pacific Islander, Two or More Races, and Other race/ethnicity categories left off this chart due to relatively low numbers

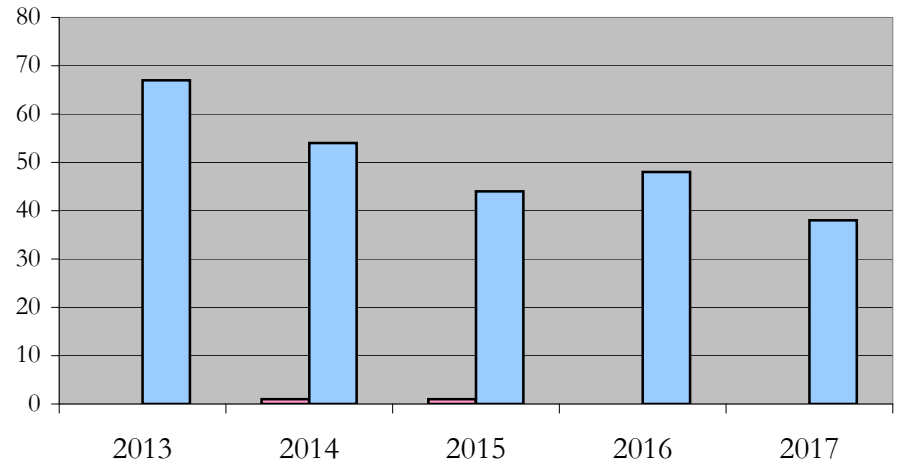
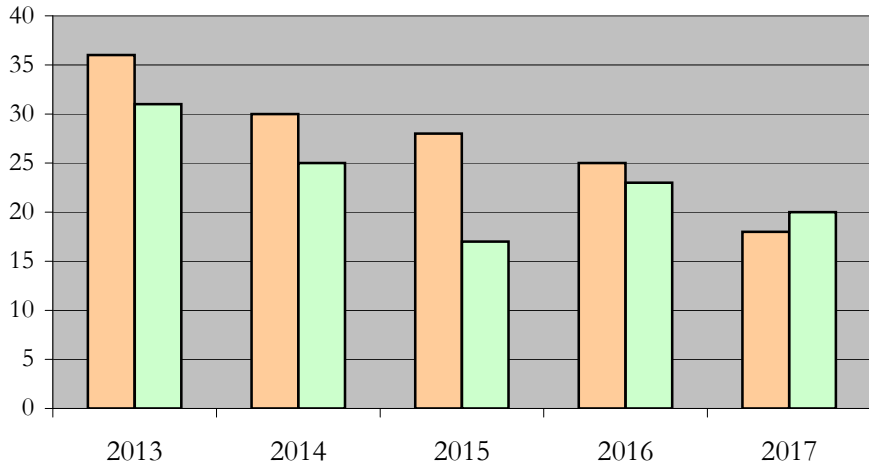
**Total Enrollment (includes secondary curriculum)**

**by Student Type, Gender, and Enrollment Time**

Architecture\_MARCH [20FS0249MARC]

Fall 2013 through Fall 2017

Fall Semester Year	Total	New		Continuing		Male		Female		Gender Not Reported	Part-time		Full-time	
		Count	%	Count	%	Count	%	Count	%	Count	Count	%	Count	%
2013	67	23	34.3	44	65.7	36	53.7	31	46.3	0	0	0.0	67	100.0
2014	55	19	34.5	36	65.5	30	54.5	25	45.5	0	1	1.8	54	98.2
2015	45	15	33.3	30	66.7	28	62.2	17	37.8	0	1	2.2	44	97.8
2016	48	22	45.8	26	54.2	25	52.1	23	47.9	0	0	0.0	48	100.0
2017	38	9	23.7	29	76.3	18	47.4	20	52.6	0	0	0.0	38	100.0



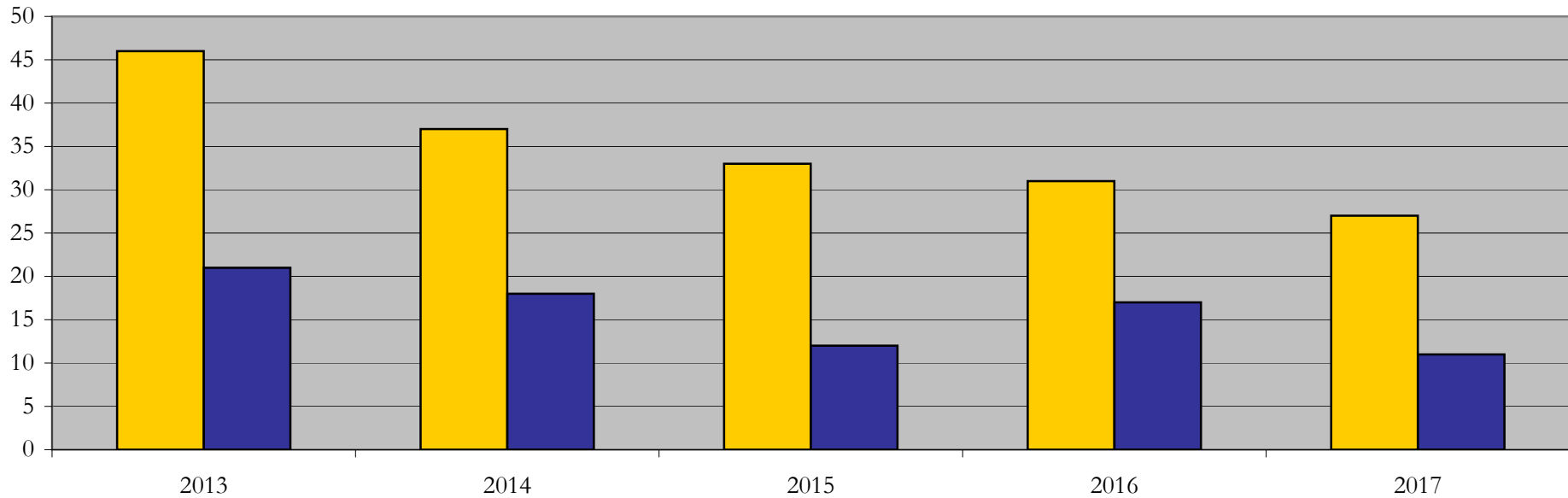
## Enrollment & Degrees Conferred

### by Primary/Secondary, Average Age, State Residency

Architecture\_MARCH [20FS0249MARC]

Fall 2013 through Fall 2017

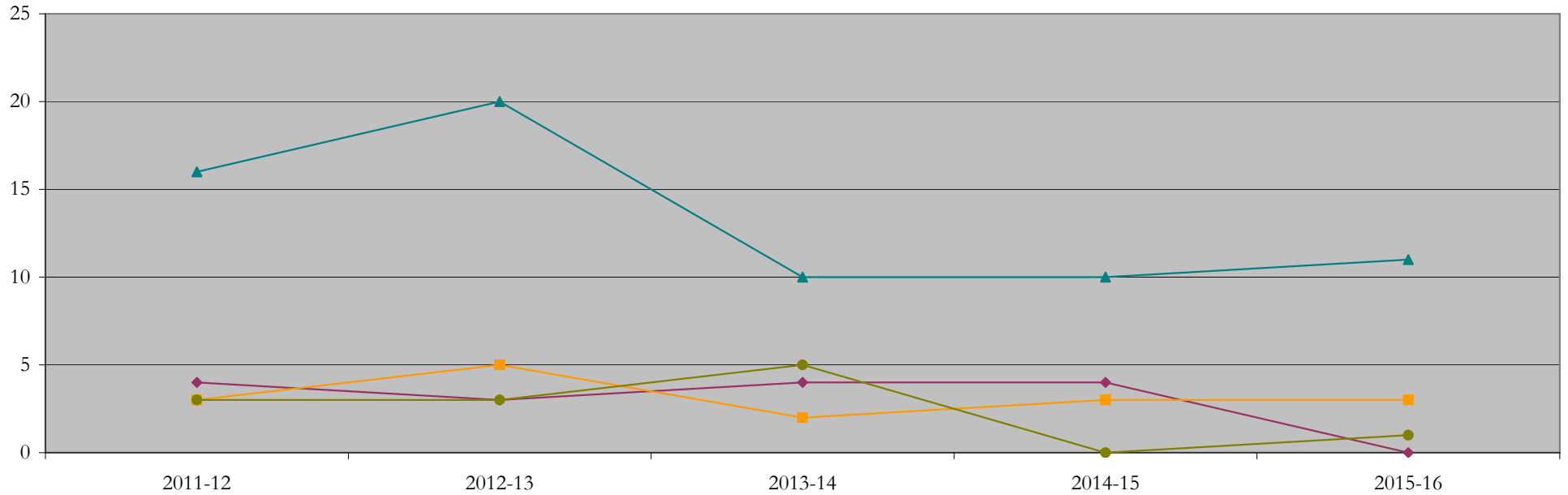
Fall Semester Year	Enrollment			Average Age			State Residency of Total Enrollment					
	Total	Primary	Secondary	Fall New Enrollment	Fall Continuing Enrollment	Academic Year Graduating Class	Residents			Non-Residents		
							Total Enrollment	New Enrollment	Continuing Enrollment	Total Enrollment	New Enrollment	Continuing Enrollment
2013	67	67	0	26	26	27	46	17	29	21	6	15
2014	55	55	0	25	27	25	37	14	23	18	5	13
2015	45	45	0	24	27	24	33	10	23	12	5	7
2016	48	48	0	26	26	27	31	10	21	17	12	5
2017	38	38	0	27	26	25	27	9	18	11	0	11



## Degrees Conferred by Race/Ethnicity

Architecture\_MARCH [20FS0249MARC]  
AY2011-12 through 2015-16

Academic Year	Total	Under Represented Minorities (URM)								Asian		Native Hawaiian or Pacific		White		Two or More Races		International		Not Reported
		American Indian or Alaska Native		Black or African American		Hispanic / Latino		URM Total		Count	%	Count	%	Count	%	Count	%	Count	%	Count
		Count	%	Count	%	Count	%	Count	%											
2012 - 2013	29	0	0.0	0	0.0	4	13.8	4	13.8	3	10.3	0	0.0	16	55.2	2	6.9	3	10.3	1
2013 - 2014	33	0	0.0	0	0.0	3	9.1	3	9.1	5	15.2	0	0.0	20	60.6	1	3.0	3	9.1	1
2014 - 2015	21	0	0.0	0	0.0	4	19.0	4	19.0	2	9.5	0	0.0	10	47.6	0	0.0	5	23.8	0
2015 - 2016	18	0	0.0	1	5.6	3	16.7	4	22.2	3	16.7	0	0.0	10	55.6	1	5.6	0	0.0	0
2016 - 2017	16	0	0.0	0	0.0	0	0.0	0	0.0	3	18.8	0	0.0	11	68.8	1	6.3	1	6.3	0



**Notes:** 1) URM stands for Under-Represented Minority and includes American Indian or Alaska Native; Black or African-American; Hispanic / Latino race/ethnicity groups  
2) Individual URM groups, Native Hawaiian Pacific Islander, Two or More Races, and Other race/ethnicity categories left off this chart due to relatively low numbers

## Degrees Conferred

### by Gender

Architecture\_MARCH [20FS0249MARC]

AY2011-12 through 2015-16

Academic Year	Total	Male		Female		Not Reported
		Count	%	Count	%	
2012 - 2013	29	16	55.2	13	44.8	0
2013 - 2014	33	17	51.5	16	48.5	0
2014 - 2015	21	10	47.6	11	52.4	0
2015 - 2016	18	12	66.7	6	33.3	0
2016 - 2017	16	10	62.5	6	37.5	0

