

# Matriculation

## Diversity Pipeline

Health\_Informatics\_CAS [20FS1303CASU]

Fall 2013 through Fall 2017

Fall Semester Year	Applied					Admitted					Non-URM Admitted to Applied Yield %	URM Admitted to Applied Yield %	New Enrollment					Non-URM Enrolled to Admitted Yield %	URM Enrolled to Admitted Yield %	Total Enrollment				
	Grand Total	Non-URM Total		URM Total		Grand Total	Non-URM Total		URM Total				Grand Total	Non-URM Total		URM Total				Grand Total	Non-URM Total		URM Total	
		Count	%	Count	%		Count	%	Count	%				Count	%	Count	%				Count	%	Count	%
	Count	%	Count	%	Count	%	Count	%	Count	%			Count	%	Count	%	Count			%	Count	%	Count	%
2013	24	17	70.8%	7	29.2%	19	16	84.2%	3	15.8%	94.1%	42.9%	16	13	81.3%	3	18.8%	81.3%	100.0%	54	39	72.2%	15	27.8%
2014	35	29	82.9%	6	17.1%	29	24	82.8%	5	17.2%	82.8%	83.3%	18	14	77.8%	4	22.2%	58.3%	80.0%	45	34	75.6%	11	24.4%
2015	49	38	77.6%	11	22.4%	35	30	85.7%	5	14.3%	78.9%	45.5%	18	16	88.9%	2	11.1%	53.3%	40.0%	39	34	87.2%	5	12.8%
2016	30	21	70.0%	9	30.0%	24	17	70.8%	7	29.2%	81.0%	77.8%	15	12	80.0%	3	20.0%	70.6%	42.9%	35	29	82.9%	6	17.1%
2017	28	19	67.9%	9	32.1%	24	15	62.5%	9	37.5%	78.9%	100.0%	16	9	56.3%	7	43.8%	60.0%	77.8%	45	35	77.8%	10	22.2%
<b>Average</b>	<b>33</b>	<b>25</b>	<b>74.7%</b>	<b>8</b>	<b>25.3%</b>	<b>26</b>	<b>20</b>	<b>77.9%</b>	<b>6</b>	<b>22.1%</b>	<b>82.3%</b>	<b>69.0%</b>	<b>17</b>	<b>13</b>	<b>77.1%</b>	<b>4</b>	<b>22.9%</b>	<b>62.7%</b>	<b>65.5%</b>	<b>44</b>	<b>34</b>	<b>78.4%</b>	<b>9.4</b>	<b>21.6%</b>

**Note:** URM stands for Under-Represented Minority and includes American Indian or Alaska Native; Black or African-American; Hispanic / Latino race/ethnicity groups

# Applications, Admission, & New Enrollment Yields

## by Race/Ethnicity & Gender

Health\_Informatics\_CAS [20FS1303CASU]

Fall 2013 through Fall 2017

	Fall Semester Year	Total		Under Represented Minorities (URM)								Asian	Native Hawaiian or Pacific Islander	White	Two or More Races	International	Race/Eth Not Reported	Male		Female						
				American Indian or Alaska Native	Black or African American	Hispanic / Latino	URM Total																			
Applied	2013	24		0	6	1	7	3	0	12	0	0	2	10	14											
	2014	35		0	5	1	6	6	0	19	0	0	4	14	18											
	2015	49		0	7	4	11	11	0	17	1	5	4	23	25											
	2016	30		0	9	0	9	6	0	11	1	1	2	10	19											
	2017	28		0	8	1	9	7	0	12	0	0	0	12	15											
		Count	% Yield	Count	% Yield	Count	% Yield	Count	% Yield	Count	% Yield	Count	% Yield	Count	% Yield	Count	% Yield	Count	% Yield	Count	% Yield					
Admitted	2013	19	79.2	0	0.0	3	50.0	0	0.0	3	42.9	3	100.0	0	0.0	11	91.7	0	0.0	0	0.0	2	8	80.0	11	78.6
	2014	29	82.9	0	0.0	4	80.0	1	100.0	5	83.3	5	83.3	0	0.0	16	84.2	0	0.0	0	0.0	3	11	78.6	15	83.3
	2015	35	71.4	0	0.0	4	57.1	1	25.0	5	45.5	7	63.6	0	0.0	15	88.2	1	100.0	3	60.0	4	14	60.9	20	80.0
	2016	24	80.0	0	0.0	7	77.8	0	0.0	7	77.8	3	50.0	0	0.0	10	90.9	1	100.0	1	100.0	2	8	80.0	16	84.2
	2017	24	85.7	0	0.0	8	100.0	1	100.0	9	100.0	5	71.4	0	0.0	10	83.3	0	0.0	0	0.0	0	10	83.3	14	93.3
		Count	% Yield	Count	% Yield	Count	% Yield	Count	% Yield	Count	% Yield	Count	% Yield	Count	% Yield	Count	% Yield	Count	% Yield	Count	% Yield	Count	Count	% Yield	Count	% Yield
Enrolled	2013	16	84.2	0	0.0	2	66.7	1	0.0	3	100.0	1	33.3	0	0.0	10	90.9	0	0.0	1	0.0	1	4	50.0	12	109.1
	2014	18	62.1	0	0.0	3	75.0	1	100.0	4	80.0	3	60.0	0	0.0	10	62.5	0	0.0	0	0.0	1	7	63.6	9	60.0
	2015	18	51.4	0	0.0	1	25.0	1	100.0	2	40.0	3	42.9	0	0.0	7	46.7	1	100.0	2	66.7	3	8	57.1	10	50.0
	2016	15	62.5	0	0.0	3	42.9	0	0.0	3	42.9	1	33.3	0	0.0	7	70.0	1	100.0	1	100.0	2	6	75.0	9	56.3
	2017	16	66.7	0	0.0	6	75.0	1	100.0	7	77.8	4	80.0	0	0.0	5	50.0	0	0.0	0	0.0	0	5	50.0	11	78.6

**Notes:**

- 1) URM stands for Under-Represented Minority and includes American Indian or Alaska Native; Black or African-American; Hispanic / Latino race/ethnicity groups
- 2) Unreported Gender identification is not shown; Male and Female total may not match Total
- 3) In rare situations, the "% Yield" columns may be greater than 100. There are three potential reasons for this:
  - a) Students that received Graduate College approved transfers may not have an admission record for the program that they enrolled into.
  - b) Students with a secondary curriculum enrollment may not have an admission record for that secondary program.
  - c) Students who were newly enrolled in the summer term prior to the fall were added to the fall new enrollment totals.

# Applications, Admission, & New Enrollment Yields, cont. by Race/Ethnicity & Gender

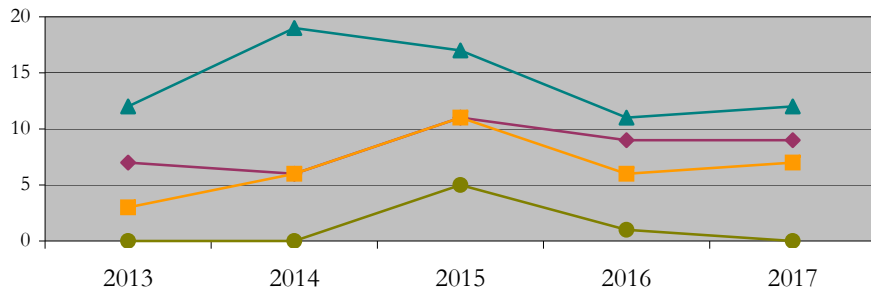
Health\_Informatics\_CAS [20FS1303CASU]

Fall 2013 through Fall 2017

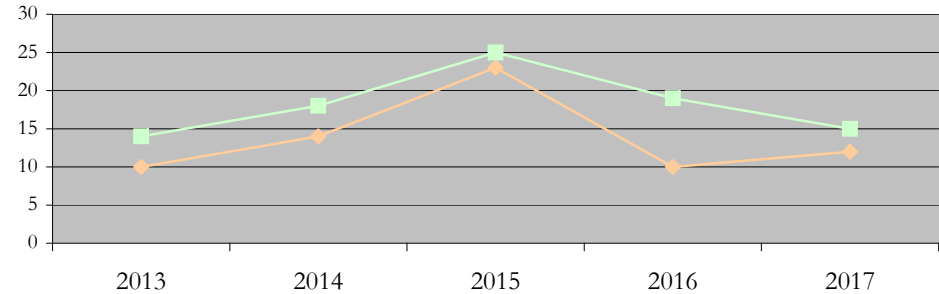
URM Total Asian White International

Male Female

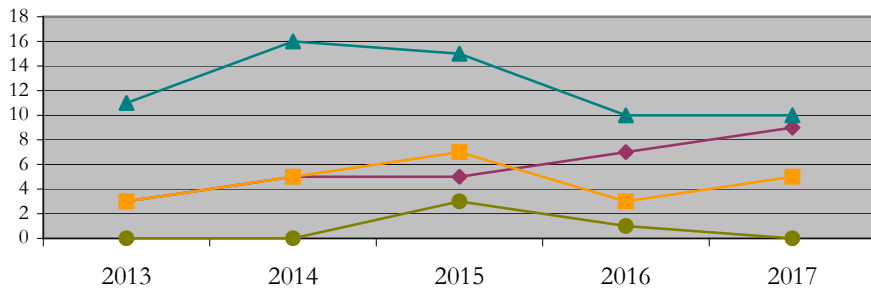
Applications by Race/Ethnicity



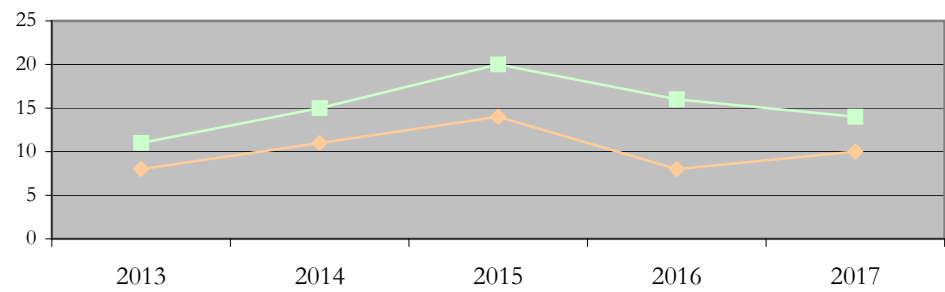
Applications by Gender



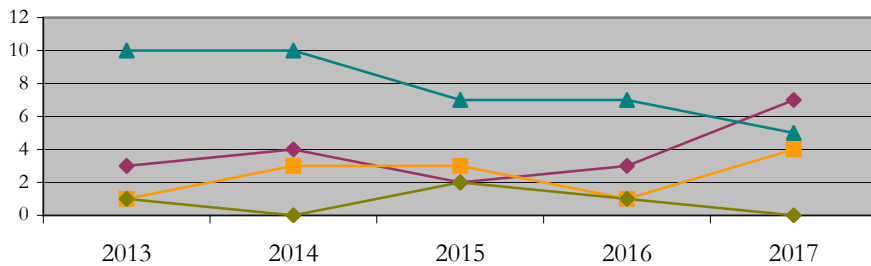
Admissions by Race/Ethnicity



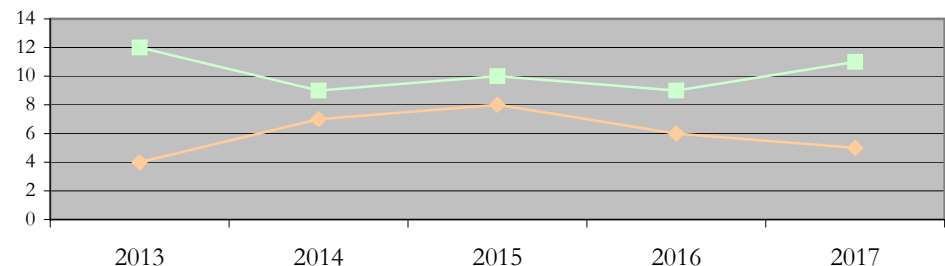
Admissions by Gender



New Enrollments by Race/Ethnicity



New Enrollments by Gender



**Notes:** 1) URM stands for Under-Represented Minority and includes American Indian or Alaska Native; Black or African-American; Hispanic / Latino race/ethnicity groups  
2) Individual URM groups, Native Hawaiian Pacific Islander, Two or More Races, and Other race/ethnicity categories left off these charts due to relatively low numbers

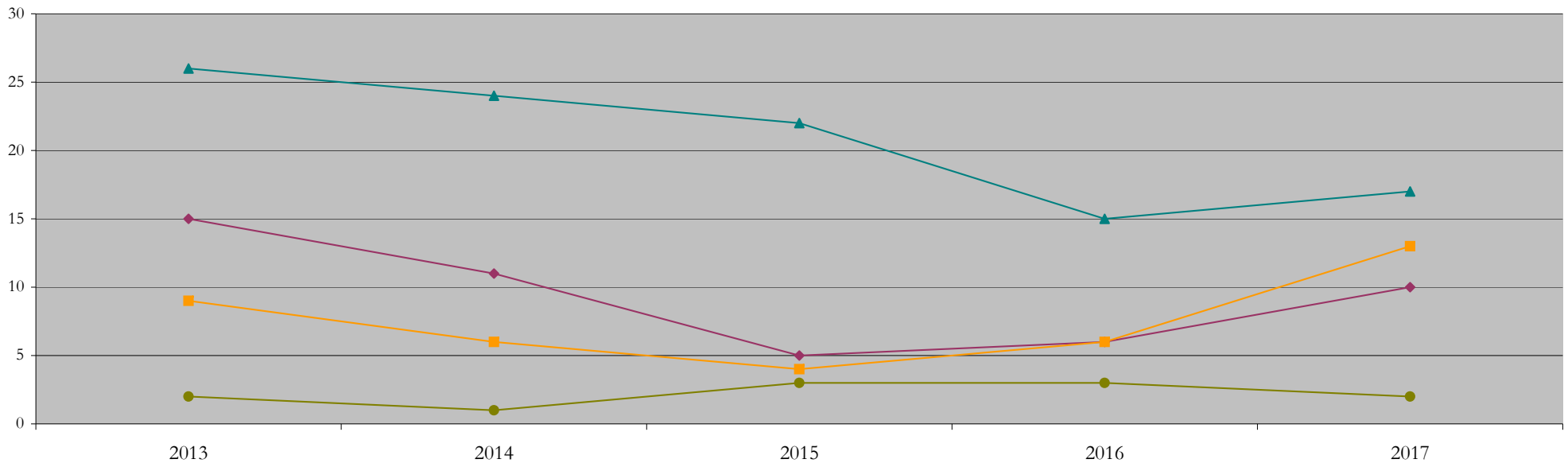
**Total Enrollment (includes secondary curriculum)**

**by Race/Ethnicity**

Health\_Informatics\_CAS [20FS1303CASU]

Fall 2013 through Fall 2017

Fall Semester Year	Total	Under Represented Minorities (URM)										Asian	Native Hawaiian or Pacific Islander	White	Two or More Races	International	Race/Eth Not Reported			
		American Indian or Alaska Native		Black or African American		Hispanic / Latino		URM Total												
		Count	%	Count	%	Count	%	Count	%											
2013	54	0	0.0	11	20.4	4	7.4	15	27.8	9	16.7	1	1.9	26	48.1	0	0.0	2	3.7	1
2014	45	0	0.0	8	17.8	3	6.7	11	24.4	6	13.3	0	0.0	24	53.3	0	0.0	1	2.2	3
2015	39	0	0.0	3	7.7	2	5.1	5	12.8	4	10.3	0	0.0	22	56.4	1	2.6	3	7.7	4
2016	35	0	0.0	6	17.1	0	0.0	6	17.1	6	17.1	0	0.0	15	42.9	1	2.9	3	8.6	4
2017	45	0	0.0	9	20.0	1	2.2	10	22.2	13	28.9	0	0.0	17	37.8	1	2.2	2	4.4	2



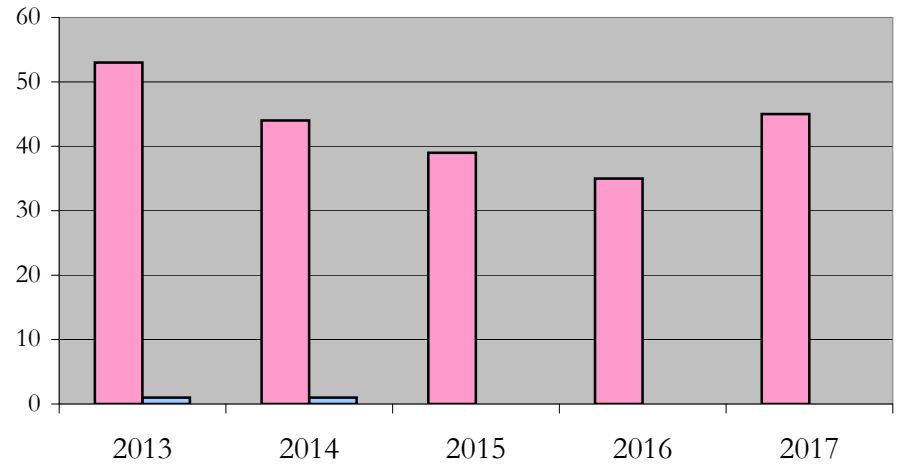
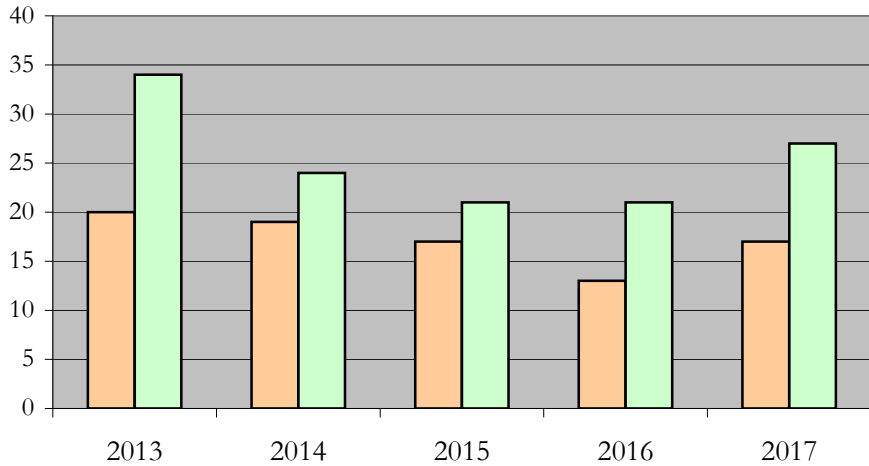
**Notes:** 1) URM stands for Under-Represented Minority and includes American Indian or Alaska Native; Black or African-American; Hispanic / Latino race/ethnicity groups  
 2) Individual URM groups, Native Hawaiian Pacific Islander, Two or More Races, and Other race/ethnicity categories left off this chart due to relatively low numbers

**Total Enrollment (includes secondary curriculum)  
by Student Type, Gender, and Enrollment Time**

Health\_Informatics\_CAS [20FS1303CASU]

Fall 2013 through Fall 2017

Fall Semester Year	Total	New		Continuing		Male		Female		Gender Not Reported	Part-time		Full-time	
		Count	%	Count	%	Count	%	Count	%	Count	Count	%	Count	%
2013	54	16	29.6	38	70.4	20	37.0	34	63.0	0	53	98.1	1	1.9
2014	45	18	40.0	27	60.0	19	42.2	24	53.3	2	44	97.8	1	2.2
2015	39	18	46.2	21	53.8	17	43.6	21	53.8	1	39	100.0	0	0.0
2016	35	15	42.9	20	57.1	13	37.1	21	60.0	1	35	100.0	0	0.0
2017	45	16	35.6	29	64.4	17	37.8	27	60.0	1	45	100.0	0	0.0



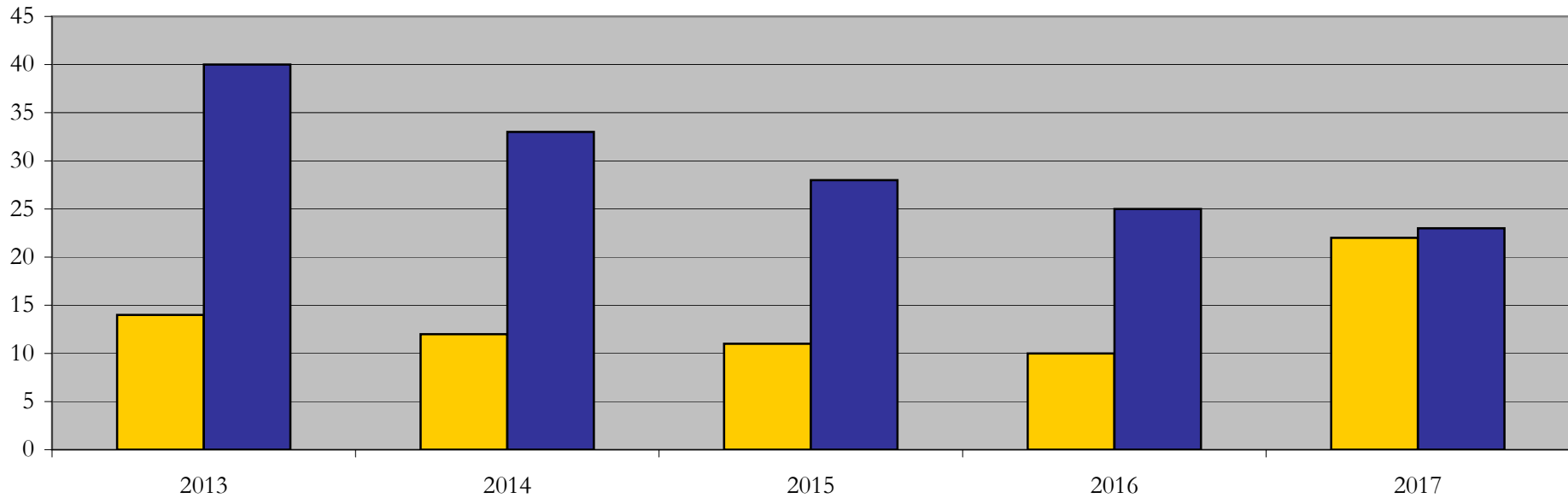
## Enrollment & Degrees Conferred

### by Primary/Secondary, Average Age, State Residency

Health\_Informatics\_CAS [20FS1303CASU]

Fall 2013 through Fall 2017

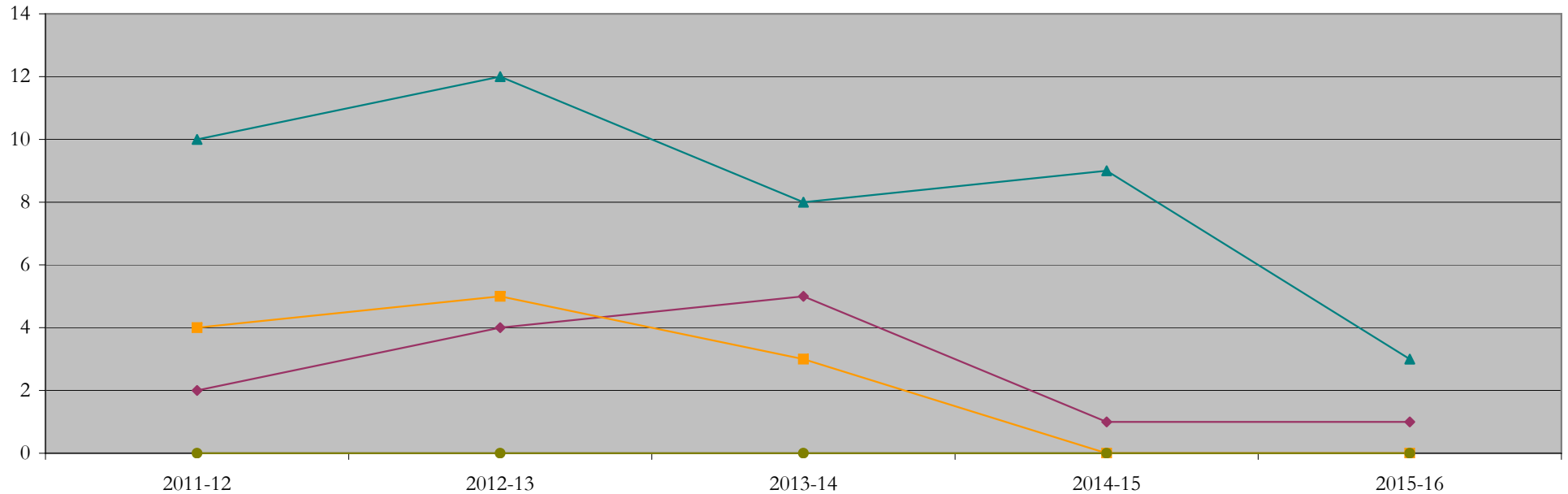
Fall Semester Year	Enrollment			Average Age			State Residency of Total Enrollment					
	Total	Primary	Secondary	Fall New Enrollment	Fall Continuing Enrollment	Academic Year Graduating Class	Residents			Non-Residents		
							Total Enrollment	New Enrollment	Continuing Enrollment	Total Enrollment	New Enrollment	Continuing Enrollment
2013	54	54	0	46	45	46	14	3	11	40	13	27
2014	45	45	0	43	48	43	12	4	8	33	14	19
2015	39	39	0	41	49	45	11	8	3	28	10	18
2016	35	35	0	44	41	49	10	2	8	25	13	12
2017	45	45	0	43	41	46	22	8	14	23	8	15



## Degrees Conferred by Race/Ethnicity

Health\_Informatics\_CAS [20FS1303CASU]  
AY2011-12 through 2015-16

Academic Year	Total	Under Represented Minorities (URM)								Asian		Native Hawaiian or Pacific		White		Two or More Races		International		Not Reported
		American Indian or Alaska Native		Black or African American		Hispanic / Latino		URM Total		Count	%	Count	%	Count	%	Count	%	Count	%	
		Count	%	Count	%	Count	%	Count	%											
2012 - 2013	17	0	0.0	2	11.8	0	0.0	2	11.8	4	23.5	0	0.0	10	58.8	0	0.0	0	0.0	1
2013 - 2014	22	0	0.0	3	13.6	1	4.5	4	18.2	5	22.7	1	4.5	12	54.5	0	0.0	0	0.0	0
2014 - 2015	16	0	0.0	4	25.0	1	6.3	5	31.3	3	18.8	0	0.0	8	50.0	0	0.0	0	0.0	0
2015 - 2016	10	0	0.0	0	0.0	1	10.0	1	10.0	0	0.0	0	0.0	9	90.0	0	0.0	0	0.0	0
2016 - 2017	5	0	0.0	1	20.0	0	0.0	1	20.0	0	0.0	0	0.0	3	60.0	0	0.0	0	0.0	1



**Notes:** 1) URM stands for Under-Represented Minority and includes American Indian or Alaska Native; Black or African-American; Hispanic / Latino race/ethnicity groups  
2) Individual URM groups, Native Hawaiian Pacific Islander, Two or More Races, and Other race/ethnicity categories left off this chart due to relatively low numbers

## Degrees Conferred

### by Gender

Health\_Informatics\_CAS [20FS1303CASU]

AY2011-12 through 2015-16

Academic Year	Total	Male		Female		Not Reported
		Count	%	Count	%	
2012 - 2013	17	4	23.5	13	76.5	0
2013 - 2014	22	8	36.4	14	63.6	0
2014 - 2015	16	8	50.0	8	50.0	0
2015 - 2016	10	4	40.0	6	60.0	0
2016 - 2017	5	1	20.0	4	80.0	0

