

# Matriculation

## Diversity Pipeline

Nutrition\_MS [20FS1506MS]

Fall 2013 through Fall 2017

Fall Semester Year	Applied					Admitted					Non-URM Admitted to Applied Yield %	URM Admitted to Applied Yield %	New Enrollment					Non-URM Enrolled to Admitted Yield %	URM Enrolled to Admitted Yield %	Total Enrollment				
	Grand Total	Non-URM Total		URM Total		Grand Total	Non-URM Total		URM Total				Grand Total	Non-URM Total		URM Total				Grand Total	Non-URM Total		URM Total	
		Count	%	Count	%		Count	%	Count	%				Count	%	Count	%				Count	%	Count	%
2013	78	71	91.0%	7	9.0%	32	28	87.5%	4	12.5%	39.4%	57.1%	20	17	85.0%	3	15.0%	60.7%	75.0%	66	58	87.9%	8	12.1%
2014	90	81	90.0%	9	10.0%	42	39	92.9%	3	7.1%	48.1%	33.3%	29	27	93.1%	2	6.9%	69.2%	66.7%	68	60	88.2%	8	11.8%
2015	81	74	91.4%	7	8.6%	45	39	86.7%	6	13.3%	52.7%	85.7%	27	22	81.5%	5	18.5%	56.4%	83.3%	73	62	84.9%	11	15.1%
2016	82	69	84.1%	13	15.9%	51	43	84.3%	8	15.7%	62.3%	61.5%	33	28	84.8%	5	15.2%	65.1%	62.5%	84	73	86.9%	11	13.1%
2017	58	51	87.9%	7	12.1%	38	34	89.5%	4	10.5%	66.7%	57.1%	20	18	90.0%	2	10.0%	52.9%	50.0%	82	70	85.4%	12	14.6%
<b>Average</b>	<b>78</b>	<b>69</b>	<b>88.9%</b>	<b>9</b>	<b>11.1%</b>	<b>42</b>	<b>37</b>	<b>88.0%</b>	<b>5</b>	<b>12.0%</b>	<b>52.9%</b>	<b>58.1%</b>	<b>26</b>	<b>22</b>	<b>86.8%</b>	<b>3</b>	<b>13.2%</b>	<b>61.2%</b>	<b>68.0%</b>	<b>75</b>	<b>65</b>	<b>86.6%</b>	<b>10</b>	<b>13.4%</b>

**Note:** URM stands for Under-Represented Minority and includes American Indian or Alaska Native; Black or African-American; Hispanic / Latino race/ethnicity groups

# Applications, Admission, & New Enrollment Yields by Race/Ethnicity & Gender

Nutrition\_MS [20FS1506MS]  
Fall 2013 through Fall 2017

	Fall Semester Year	Total		Under Represented Minorities (URM)								Asian	Native Hawaiian or Pacific Islander	White	Two or More Races	International	Race/Eth Not Reported	Male		Female							
				American Indian or Alaska Native	Black or African American	Hispanic / Latino	URM Total																				
<b>Applied</b>	2013	78		0	3	4	7	6	1	47	2	12	3	5	73												
	2014	90		0	4	5	9	6	0	58	1	10	6	5	84												
	2015	81		0	3	4	7	8	1	52	0	8	5	6	75												
	2016	82		0	2	11	13	5	0	41	1	19	3	6	76												
	2017	58		0	2	5	7	2	0	39	2	7	1	3	55												
		Count	% Yield	Count	% Yield	Count	% Yield	Count	% Yield	Count	% Yield	Count	% Yield	Count	% Yield	Count	% Yield	Count	% Yield	Count	% Yield						
<b>Admitted</b>	2013	32	41.0	0	0.0	2	66.7	2	50.0	4	57.1	2	33.3	0	0.0	20	42.6	2	100.0	2	16.7	2	2	40.0	30	41.1	
	2014	42	46.7	0	0.0	2	50.0	1	20.0	3	33.3	1	16.7	0	0.0	32	55.2	0	0.0	1	10.0	5	4	80.0	38	45.2	
	2015	45	55.6	0	0.0	2	66.7	4	100.0	6	85.7	4	50.0	1	100.0	29	55.8	0	0.0	1	12.5	4	3	50.0	42	56.0	
	2016	51	62.2	0	0.0	1	50.0	7	63.6	8	61.5	3	60.0	0	0.0	26	63.4	0	0.0	11	57.9	3	2	33.3	49	64.5	
	2017	38	65.5	0	0.0	1	50.0	3	60.0	4	57.1	1	50.0	0	0.0	27	69.2	1	50.0	5	71.4	0	2	66.7	36	65.5	
		Count	% Yield	Count	% Yield	Count	% Yield	Count	% Yield	Count	% Yield	Count	% Yield	Count	% Yield	Count	% Yield	Count	% Yield	Count	% Yield	Count	% Yield	Count	% Yield	Count	% Yield
<b>Enrolled</b>	2013	20	62.5	0	0.0	2	100.0	1	50.0	3	75.0	2	100.0	0	0.0	13	65.0	2	100.0	0	0.0	0	1	50.0	19	63.3	
	2014	29	69.0	0	0.0	2	100.0	0	0.0	2	66.7	1	100.0	0	0.0	24	75.0	0	0.0	1	100.0	1	3	75.0	26	68.4	
	2015	27	60.0	0	0.0	2	100.0	3	75.0	5	83.3	3	75.0	0	0.0	16	55.2	0	0.0	0	0.0	3	1	33.3	26	61.9	
	2016	33	64.7	0	0.0	1	100.0	4	57.1	5	62.5	1	33.3	0	0.0	21	80.8	0	0.0	5	45.5	1	2	100.0	31	63.3	
	2017	20	52.6	0	0.0	0	0.0	2	66.7	2	50.0	0	0.0	0	0.0	12	44.4	1	100.0	5	100.0	0	2	100.0	18	50.0	

**Notes:**

- 1) URM stands for Under-Represented Minority and includes American Indian or Alaska Native; Black or African-American; Hispanic / Latino race/ethnicity groups
- 2) Unreported Gender identification is not shown; Male and Female total may not match Total
- 3) In rare situations, the "% Yield" columns may be greater than 100. There are three potential reasons for this:
  - a) Students that received Graduate College approved transfers may not have an admission record for the program that they enrolled into.
  - b) Students with a secondary curriculum enrollment may not have an admission record for that secondary program.
  - c) Students who were newly enrolled in the summer term prior to the fall were added to the fall new enrollment totals.

# Applications, Admission, & New Enrollment Yields, cont. by Race/Ethnicity & Gender

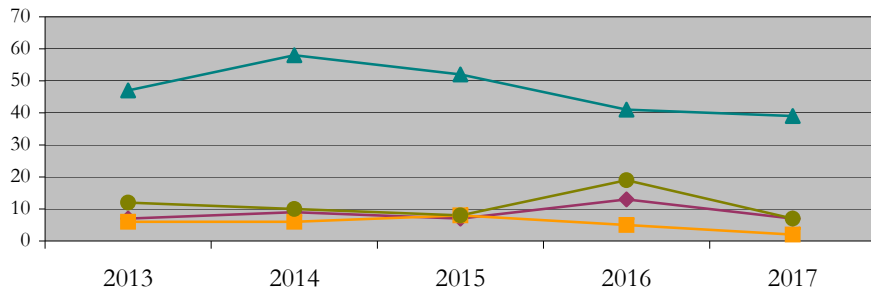
Nutrition\_MS [20FS1506MS]

Fall 2013 through Fall 2017

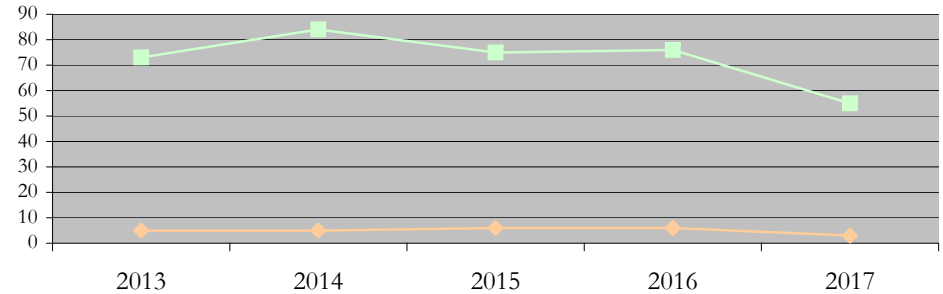
URM Total Asian White International

Male Female

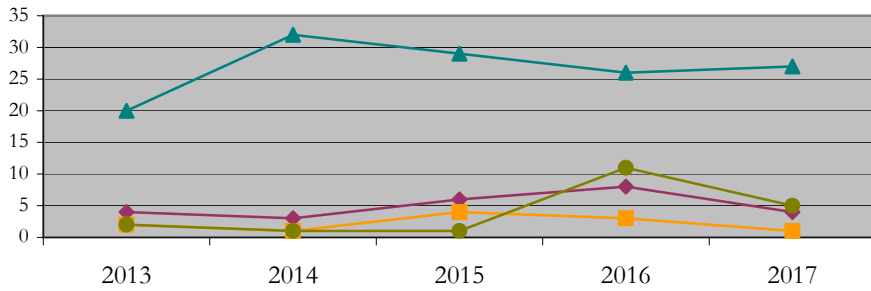
Applications by Race/Ethnicity



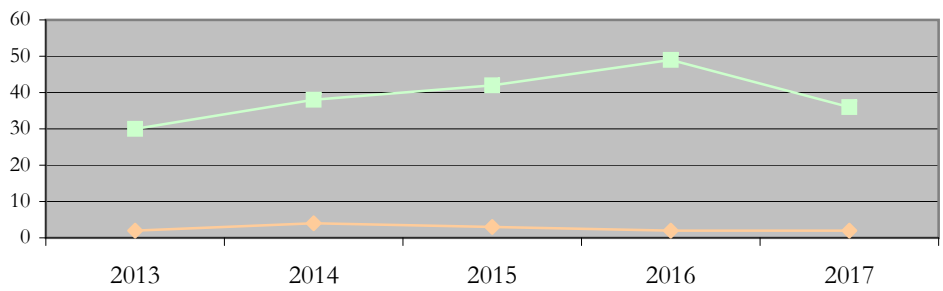
Applications by Gender



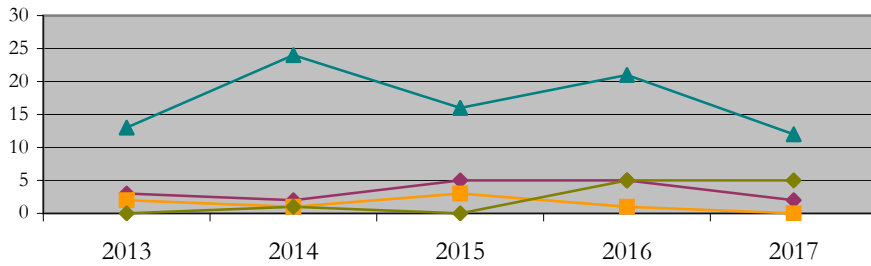
Admissions by Race/Ethnicity



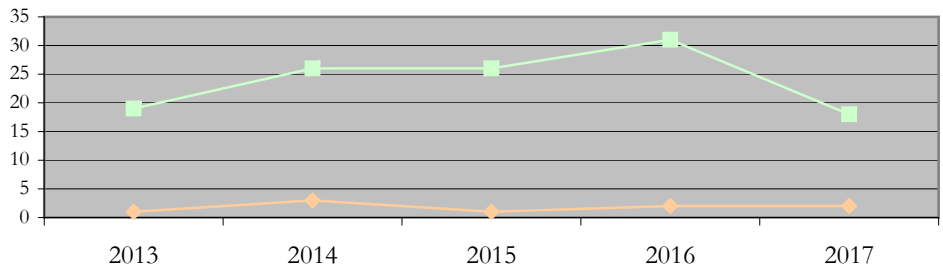
Admissions by Gender



New Enrollments by Race/Ethnicity



New Enrollments by Gender



**Notes:** 1) URM stands for Under-Represented Minority and includes American Indian or Alaska Native; Black or African-American; Hispanic / Latino race/ethnicity groups  
2) Individual URM groups, Native Hawaiian Pacific Islander, Two or More Races, and Other race/ethnicity categories left off these charts due to relatively low numbers

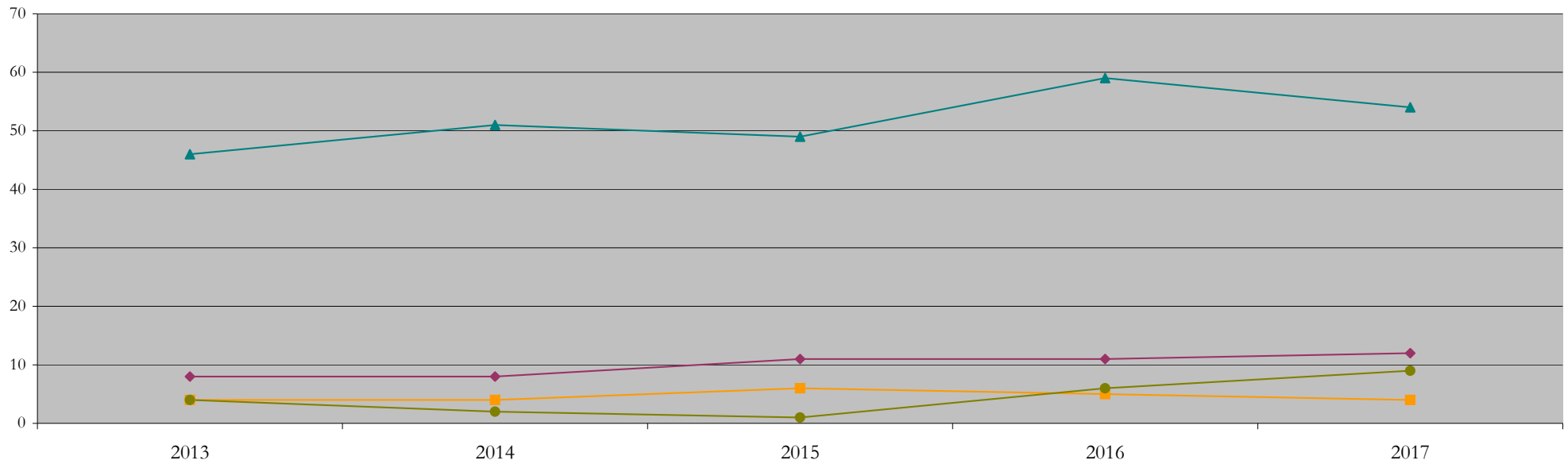
## Total Enrollment (includes secondary curriculum)

### by Race/Ethnicity

Nutrition\_MS [20FS1506MS]

Fall 2013 through Fall 2017

Fall Semester Year	Total	Under Represented Minorities (URM)										Asian	Native Hawaiian or Pacific Islander	White		Two or More Races		International		Race/Eth Not Reported		
		American Indian or Alaska Native		Black or African American		Hispanic / Latino		URM Total		Count				Count	%	Count	%	Count	%		Count	%
		Count	%	Count	%	Count	%	Count	%	Count	%			Count	%	Count	%	Count	%		Count	%
2013	66	0	0.0	5	7.6	3	4.5	8	12.1	4	6.1	0	0.0	46	69.7	3	4.5	4	6.1	1		
2014	68	0	0.0	6	8.8	2	2.9	8	11.8	4	5.9	0	0.0	51	75.0	2	2.9	2	2.9	1		
2015	73	0	0.0	7	9.6	4	5.5	11	15.1	6	8.2	0	0.0	49	67.1	2	2.7	1	1.4	4		
2016	84	0	0.0	5	6.0	6	7.1	11	13.1	5	6.0	0	0.0	59	70.2	0	0.0	6	7.1	3		
2017	82	0	0.0	4	4.9	8	9.8	12	14.6	4	4.9	0	0.0	54	65.9	1	1.2	9	11.0	2		



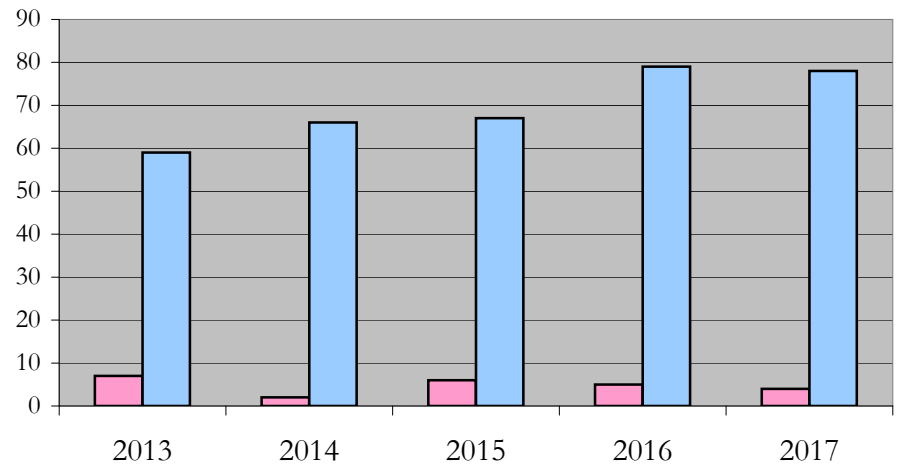
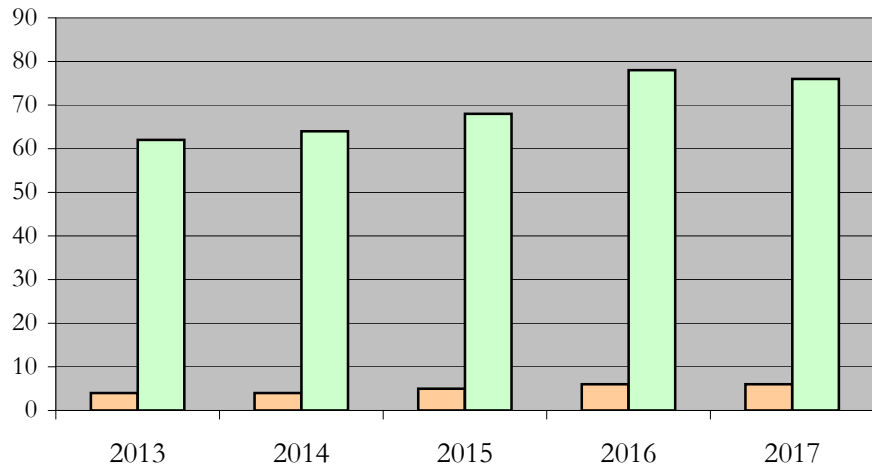
**Notes:** 1) URM stands for Under-Represented Minority and includes American Indian or Alaska Native; Black or African-American; Hispanic / Latino race/ethnicity groups  
 2) Individual URM groups, Native Hawaiian Pacific Islander, Two or More Races, and Other race/ethnicity categories left off this chart due to relatively low numbers

**Total Enrollment (includes secondary curriculum)  
by Student Type, Gender, and Enrollment Time**

Nutrition\_MS [20FS1506MS]

Fall 2013 through Fall 2017

Fall Semester Year	Total	New		Continuing		Male		Female		Gender Not Reported	Part-time		Full-time	
		Count	%	Count	%	Count	%	Count	%	Count	Count	%	Count	%
2013	66	20	30.3	46	69.7	4	6.1	62	93.9	0	7	10.6	59	89.4
2014	68	29	42.6	39	57.4	4	5.9	64	94.1	0	2	2.9	66	97.1
2015	73	27	37.0	46	63.0	5	6.8	68	93.2	0	6	8.2	67	91.8
2016	84	33	39.3	51	60.7	6	7.1	78	92.9	0	5	6.0	79	94.0
2017	82	20	24.4	62	75.6	6	7.3	76	92.7	0	4	4.9	78	95.1



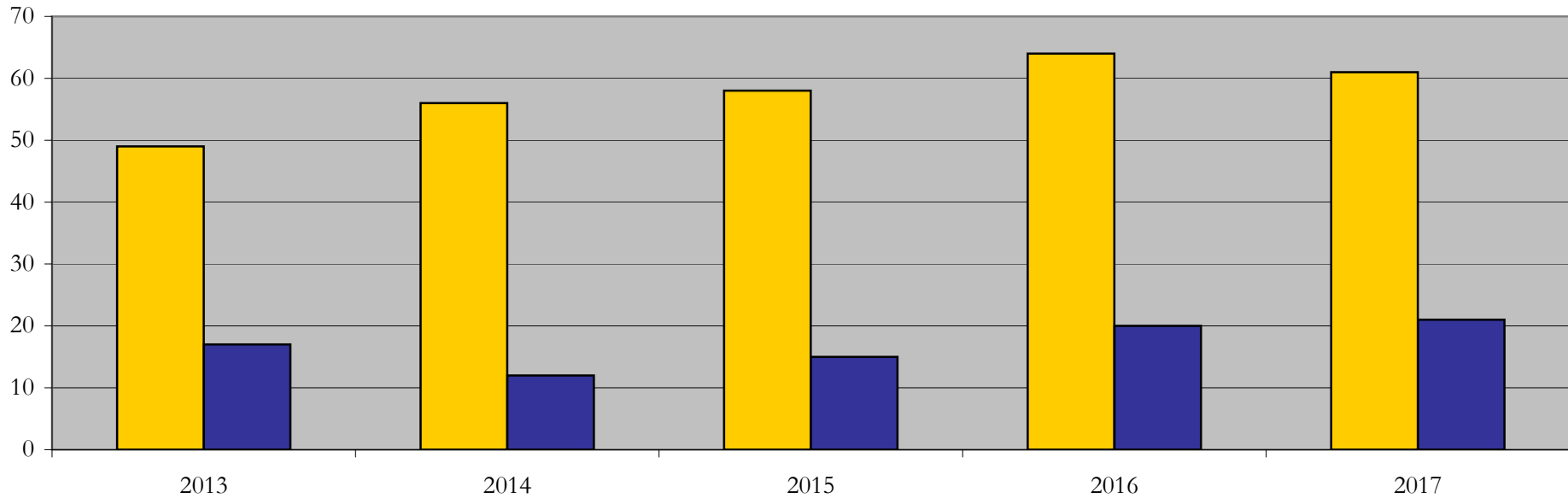
## Enrollment & Degrees Conferred

by Primary/Secondary, Average Age, State Residency

Nutrition\_MS [20FS1506MS]

Fall 2013 through Fall 2017

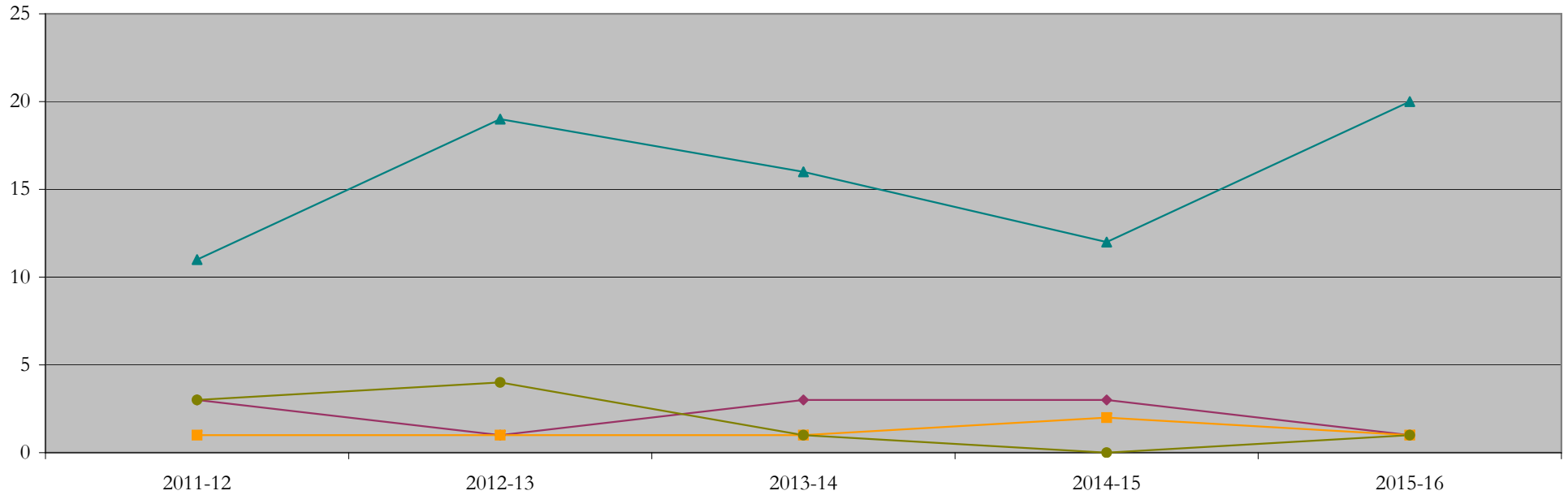
Fall Semester Year	Enrollment			Average Age			State Residency of Total Enrollment					
	Total	Primary	Secondary	Fall New Enrollment	Fall Continuing Enrollment	Academic Year Graduating Class	Residents			Non-Residents		
							Total Enrollment	New Enrollment	Continuing Enrollment	Total Enrollment	New Enrollment	Continuing Enrollment
2013	66	66	0	27	31	34	49	15	34	17	5	12
2014	68	68	0	29	30	29	56	25	31	12	4	8
2015	73	73	0	28	30	29	58	21	37	15	6	9
2016	84	84	0	26	30	29	64	21	43	20	12	8
2017	82	82	0	29	28	30	61	12	49	21	8	13



## Degrees Conferred by Race/Ethnicity

Nutrition\_MS [20FS1506MS]  
AY2011-12 through 2015-16

Academic Year	Total	Under Represented Minorities (URM)								Asian		Native Hawaiian or Pacific		White		Two or More Races		International		Not Reported
		American Indian or Alaska Native		Black or African American		Hispanic / Latino		URM Total		Count	%	Count	%	Count	%	Count	%	Count	%	
		Count	%	Count	%	Count	%	Count	%											
2012 - 2013	19	0	0.0	2	10.5	1	5.3	3	15.8	1	5.3	0	0.0	11	57.9	1	5.3	3	15.8	0
2013 - 2014	27	0	0.0	0	0.0	1	3.7	1	3.7	1	3.7	0	0.0	19	70.4	1	3.7	4	14.8	1
2014 - 2015	21	0	0.0	2	9.5	1	4.8	3	14.3	1	4.8	0	0.0	16	76.2	0	0.0	1	4.8	0
2015 - 2016	19	0	0.0	2	10.5	1	5.3	3	15.8	2	10.5	0	0.0	12	63.2	2	10.5	0	0.0	0
2016 - 2017	24	0	0.0	1	4.2	0	0.0	1	4.2	1	4.2	0	0.0	20	83.3	0	0.0	1	4.2	1



**Notes:** 1) URM stands for Under-Represented Minority and includes American Indian or Alaska Native; Black or African-American; Hispanic / Latino race/ethnicity groups  
2) Individual URM groups, Native Hawaiian Pacific Islander, Two or More Races, and Other race/ethnicity categories left off this chart due to relatively low numbers

## Degrees Conferred

### by Gender

Nutrition\_MS [20FS1506MS]

AY2011-12 through 2015-16

Academic Year	Total	Male		Female		Not Reported
		Count	%	Count	%	
2012 - 2013	19	2	10.5	17	89.5	0
2013 - 2014	27	2	7.4	25	92.6	0
2014 - 2015	21	0	0.0	21	100.0	0
2015 - 2016	19	1	5.3	18	94.7	0
2016 - 2017	24	2	8.3	22	91.7	0

