

Matriculation

Diversity Pipeline

Health Informatics Masters

Fall 2013 - Fall 2017

	Fall Semester Year	Applied					Admitted					Non-URM Admitted to Applied Yield %	URM Admitted to Applied Yield %	New Enrollment					Non-URM Enrolled to Admitted Yield %	URM Enrolled to Admitted Yield %	Total Enrollment				
		Grand Total	Non-URM Total		URM Total		Grand Total	Non-URM Total		URM Total				Grand Total	Non-URM Total		URM Total				Grand Total	Non-URM Total		URM Total	
			Count	%	Count	%		Count	%	Count	%				Count	%	Count	%				Count	%	Count	%
All	2013	126	93	73.8%	33	26.2%	91	69	75.8%	22	24.2%	74.2%	66.7%	78	62	79.5%	16	20.5%	89.9%	72.7%	389	311	79.9%	78	20.1%
	2014	134	93	69.4%	41	30.6%	83	62	74.7%	21	25.3%	66.7%	51.2%	63	48	76.2%	15	23.8%	77.4%	71.4%	367	297	80.9%	70	19.1%
	2015	179	132	73.7%	47	26.3%	111	85	76.6%	26	23.4%	64.4%	55.3%	89	69	77.5%	20	22.5%	81.2%	76.9%	423	336	79.4%	87	20.6%
	2016	137	99	72.3%	38	27.7%	88	68	77.3%	20	22.7%	68.7%	52.6%	64	50	78.1%	14	21.9%	73.5%	70.0%	384	298	77.6%	86	22.4%
	2017	91	55	60.4%	36	39.6%	56	40	71.4%	16	28.6%	72.7%	44.4%	42	30	71.4%	12	28.6%	75.0%	75.0%	349	274	78.5%	75	21.5%
	Average	133	94	70.8%	39	29.2%	86	65	75.5%	21	24.5%	68.6%	53.8%	67	52	77.1%	15	22.9%	79.9%	73.3%	382	303	79.3%	79	20.7%
Masters & IBHE Certificate	2013	126	93	73.8%	33	26.2%	91	69	75.8%	22	24.2%	74.2%	66.7%	78	62	79.5%	16	20.5%	89.9%	72.7%	389	311	79.9%	78	20.1%
	2014	134	93	69.4%	41	30.6%	83	62	74.7%	21	25.3%	66.7%	51.2%	63	48	76.2%	15	23.8%	77.4%	71.4%	367	297	80.9%	70	19.1%
	2015	179	132	73.7%	47	26.3%	111	85	76.6%	26	23.4%	64.4%	55.3%	89	69	77.5%	20	22.5%	81.2%	76.9%	423	336	79.4%	87	20.6%
	2016	137	99	72.3%	38	27.7%	88	68	77.3%	20	22.7%	68.7%	52.6%	64	50	78.1%	14	21.9%	73.5%	70.0%	384	298	77.6%	86	22.4%
	2017	91	55	60.4%	36	39.6%	56	40	71.4%	16	28.6%	72.7%	44.4%	42	30	71.4%	12	28.6%	75.0%	75.0%	349	274	78.5%	75	21.5%
	Average	133	94	70.8%	39	29.2%	86	65	75.5%	21	24.5%	68.6%	53.8%	67	52	77.1%	15	22.9%	79.9%	73.3%	382	303	79.3%	79	20.7%
Doctorate	2013	0	0	0.0%	0	0.0%	0	0	0.0%	0	0.0%	0.0%	0.0%	0	0	0.0%	0	0.0%	0.0%	0.0%	0	0	0.0%	0	0.0%
	2014	0	0	0.0%	0	0.0%	0	0	0.0%	0	0.0%	0.0%	0.0%	0	0	0.0%	0	0.0%	0.0%	0.0%	0	0	0.0%	0	0.0%
	2015	0	0	0.0%	0	0.0%	0	0	0.0%	0	0.0%	0.0%	0.0%	0	0	0.0%	0	0.0%	0.0%	0.0%	0	0	0.0%	0	0.0%
	2016	0	0	0.0%	0	0.0%	0	0	0.0%	0	0.0%	0.0%	0.0%	0	0	0.0%	0	0.0%	0.0%	0.0%	0	0	0.0%	0	0.0%
	2017	0	0	0.0%	0	0.0%	0	0	0.0%	0	0.0%	0.0%	0.0%	0	0	0.0%	0	0.0%	0.0%	0.0%	0	0	0.0%	0	0.0%
	Average	0	0	0.0%	0	0.0%	0	0	0.0%	0	0.0%	0.0%	0.0%	0	0	0.0%	0	0.0%	0.0%	0.0%	0	0	0.0%	0	0.0%
Non-Degree & Campus Certificate	2013	0	0	0.0%	0	0.0%	0	0	0.0%	0	0.0%	0.0%	0.0%	0	0	0.0%	0	0.0%	0.0%	0.0%	0	0	0.0%	0	0.0%
	2014	0	0	0.0%	0	0.0%	0	0	0.0%	0	0.0%	0.0%	0.0%	0	0	0.0%	0	0.0%	0.0%	0.0%	0	0	0.0%	0	0.0%
	2015	0	0	0.0%	0	0.0%	0	0	0.0%	0	0.0%	0.0%	0.0%	0	0	0.0%	0	0.0%	0.0%	0.0%	0	0	0.0%	0	0.0%
	2016	0	0	0.0%	0	0.0%	0	0	0.0%	0	0.0%	0.0%	0.0%	0	0	0.0%	0	0.0%	0.0%	0.0%	0	0	0.0%	0	0.0%
	2017	0	0	0.0%	0	0.0%	0	0	0.0%	0	0.0%	0.0%	0.0%	0	0	0.0%	0	0.0%	0.0%	0.0%	0	0	0.0%	0	0.0%
	Average	0	0	0.0%	0	0.0%	0	0	0.0%	0	0.0%	0.0%	0.0%	0	0	0.0%	0	0.0%	0.0%	0.0%	0	0	0.0%	0	0.0%

Note: URM stands for Under-Represented Minority and includes American Indian or Alaska Native; Black or African-American; Hispanic / Latino race/ethnicity groups

Applications - Total

by Race/Ethnicity

Health Informatics Masters

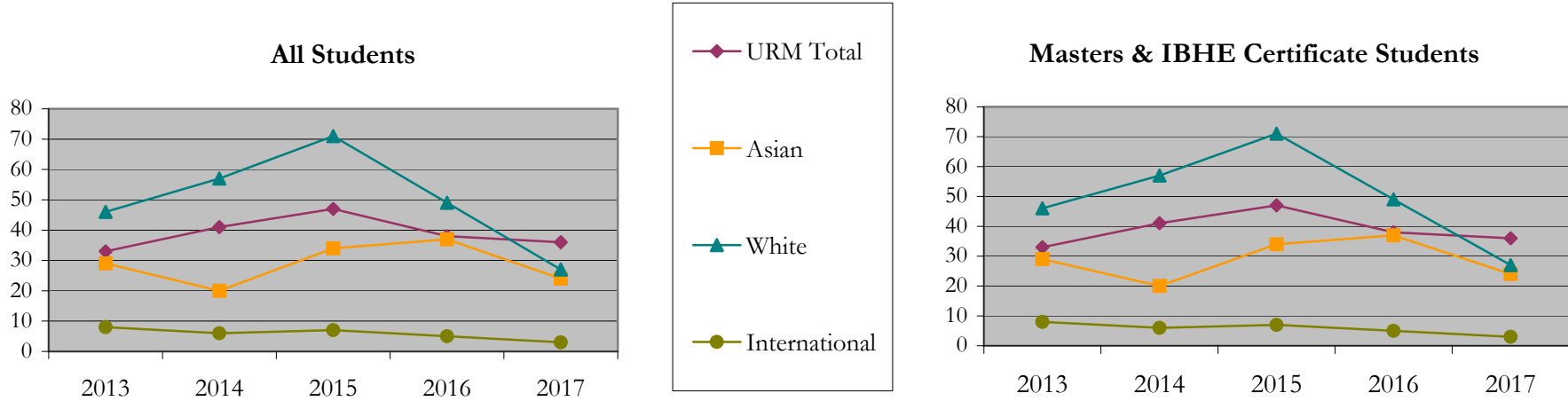
Fall 2013 - Fall 2017

		Total	Under Represented Minorities (URM)																Not Reported		
			American Indian or Alaska Native		Black or African American		Hispanic / Latino		URM Total		Asian		Native Hawaiian or Pacific Islander		White		Two or More Races			International	
			Count	%	Count	%	Count	%	Count	%	Count	%	Count	%	Count	%	Count	%		Count	%
All	2013	126	2	1.6	23	18.3	8	6.3	33	26.2	29	23.0	1	0.8	46	36.5	3	2.4	8	6.3	6
	2014	134	1	0.7	34	25.4	6	4.5	41	30.6	20	14.9	1	0.7	57	42.5	2	1.5	6	4.5	7
	2015	179	0	0.0	35	19.6	12	6.7	47	26.3	34	19.0	0	0.0	71	39.7	6	3.4	7	3.9	14
	2016	137	1	0.7	28	20.4	9	6.6	38	27.7	37	27.0	2	1.5	49	35.8	2	1.5	5	3.6	4
	2017	91	1	1.1	24	26.4	11	12.1	36	39.6	24	26.4	0	0.0	27	29.7	1	1.1	3	3.3	0
Masters & IBHE Certificate	2013	126	2	1.6	23	18.3	8	6.3	33	26.2	29	23.0	1	0.8	46	36.5	3	2.4	8	6.3	6
	2014	134	1	0.7	34	25.4	6	4.5	41	30.6	20	14.9	1	0.7	57	42.5	2	1.5	6	4.5	7
	2015	179	0	0.0	35	19.6	12	6.7	47	26.3	34	19.0	0	0.0	71	39.7	6	3.4	7	3.9	14
	2016	137	1	0.7	28	20.4	9	6.6	38	27.7	37	27.0	2	1.5	49	35.8	2	1.5	5	3.6	4
	2017	91	1	1.1	24	26.4	11	12.1	36	39.6	24	26.4	0	0.0	27	29.7	1	1.1	3	3.3	0
Doctorate	2013	0	0	0.0	0	0.0	0	0.0	0	0.0	0	0.0	0	0.0	0	0.0	0	0.0	0	0.0	0
	2014	0	0	0.0	0	0.0	0	0.0	0	0.0	0	0.0	0	0.0	0	0.0	0	0.0	0	0.0	0
	2015	0	0	0.0	0	0.0	0	0.0	0	0.0	0	0.0	0	0.0	0	0.0	0	0.0	0	0.0	0
	2016	0	0	0.0	0	0.0	0	0.0	0	0.0	0	0.0	0	0.0	0	0.0	0	0.0	0	0.0	0
	2017	0	0	0.0	0	0.0	0	0.0	0	0.0	0	0.0	0	0.0	0	0.0	0	0.0	0	0.0	0
Non-Degree & Campus Certificate	2013	0	0	0.0	0	0.0	0	0.0	0	0.0	0	0.0	0	0.0	0	0.0	0	0.0	0	0.0	0
	2014	0	0	0.0	0	0.0	0	0.0	0	0.0	0	0.0	0	0.0	0	0.0	0	0.0	0	0.0	0
	2015	0	0	0.0	0	0.0	0	0.0	0	0.0	0	0.0	0	0.0	0	0.0	0	0.0	0	0.0	0
	2016	0	0	0.0	0	0.0	0	0.0	0	0.0	0	0.0	0	0.0	0	0.0	0	0.0	0	0.0	0
	2017	0	0	0.0	0	0.0	0	0.0	0	0.0	0	0.0	0	0.0	0	0.0	0	0.0	0	0.0	0

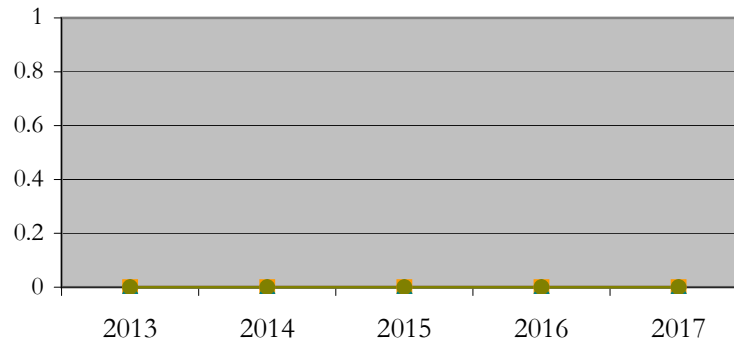
Note: URM stands for Under-Represented Minority and includes American Indian or Alaska Native; Black or African-American; Hispanic / Latino race/ethnicity groups

Applications - Total by Race/Ethnicity

Health Informatics Masters
Fall 2013 - Fall 2017



Doctorate Students



Notes: 1) URM stands for Under-Represented Minority and includes American Indian or Alaska Native; Black or African-American; Hispanic / Latino race/ethnicity groups
2) Individual URM groups, Native Hawaiian Pacific Islander, Two or More Races, and Other race/ethnicity categories left off this charts due to relatively low numbers

Applications - Admitted

by Race/Ethnicity

Health Informatics Masters

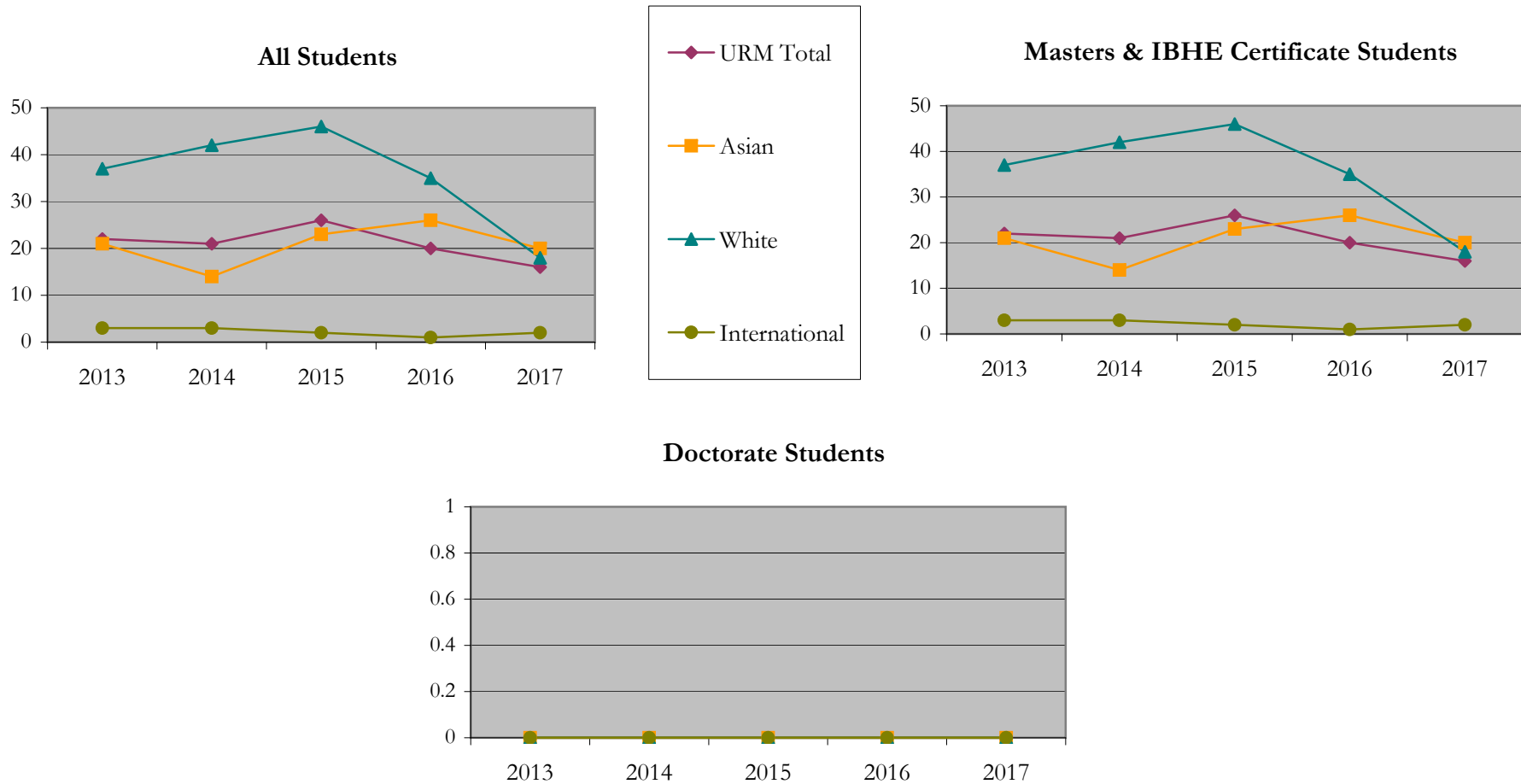
Fall 2013 - Fall 2017

		Total	Under Represented Minorities (URM)										Asian		Native Hawaiian or Pacific Islander		White		Two or More Races		International		Not Reported
			American Indian or Alaska Native		Black or African American		Hispanic / Latino		URM Total		Count	%	Count	%	Count	%	Count	%	Count	%	Count	%	
			Count	%	Count	%	Count	%	Count	%													Count
All	2013	91	0	0.0	16	17.6	6	6.6	22	24.2	21	23.1	1	1.1	37	40.7	2	2.2	3	3.3	5		
	2014	83	0	0.0	16	19.3	5	6.0	21	25.3	14	16.9	0	0.0	42	50.6	0	0.0	3	3.6	3		
	2015	111	0	0.0	20	18.0	6	5.4	26	23.4	23	20.7	0	0.0	46	41.4	3	2.7	2	1.8	11		
	2016	88	0	0.0	16	18.2	4	4.5	20	22.7	26	29.5	1	1.1	35	39.8	2	2.3	1	1.1	3		
	2017	56	1	1.8	10	17.9	5	8.9	16	28.6	20	35.7	0	0.0	18	32.1	0	0.0	2	3.6	0		
Masters & IBHE Certificate	2013	91	0	0.0	16	17.6	6	6.6	22	24.2	21	23.1	1	1.1	37	40.7	2	2.2	3	3.3	5		
	2014	83	0	0.0	16	19.3	5	6.0	21	25.3	14	16.9	0	0.0	42	50.6	0	0.0	3	3.6	3		
	2015	111	0	0.0	20	18.0	6	5.4	26	23.4	23	20.7	0	0.0	46	41.4	3	2.7	2	1.8	11		
	2016	88	0	0.0	16	18.2	4	4.5	20	22.7	26	29.5	1	1.1	35	39.8	2	2.3	1	1.1	3		
	2017	56	1	1.8	10	17.9	5	8.9	16	28.6	20	35.7	0	0.0	18	32.1	0	0.0	2	3.6	0		
Doctorate	2013	0	0	0.0	0	0.0	0	0.0	0	0.0	0	0.0	0	0.0	0	0.0	0	0.0	0	0.0	0		
	2014	0	0	0.0	0	0.0	0	0.0	0	0.0	0	0.0	0	0.0	0	0.0	0	0.0	0	0.0	0		
	2015	0	0	0.0	0	0.0	0	0.0	0	0.0	0	0.0	0	0.0	0	0.0	0	0.0	0	0.0	0		
	2016	0	0	0.0	0	0.0	0	0.0	0	0.0	0	0.0	0	0.0	0	0.0	0	0.0	0	0.0	0		
	2017	0	0	0.0	0	0.0	0	0.0	0	0.0	0	0.0	0	0.0	0	0.0	0	0.0	0	0.0	0		
Non-Degree & Campus Certificate	2013	0	0	0.0	0	0.0	0	0.0	0	0.0	0	0.0	0	0.0	0	0.0	0	0.0	0	0.0	0		
	2014	0	0	0.0	0	0.0	0	0.0	0	0.0	0	0.0	0	0.0	0	0.0	0	0.0	0	0.0	0		
	2015	0	0	0.0	0	0.0	0	0.0	0	0.0	0	0.0	0	0.0	0	0.0	0	0.0	0	0.0	0		
	2016	0	0	0.0	0	0.0	0	0.0	0	0.0	0	0.0	0	0.0	0	0.0	0	0.0	0	0.0	0		
	2017	0	0	0.0	0	0.0	0	0.0	0	0.0	0	0.0	0	0.0	0	0.0	0	0.0	0	0.0	0		

Note: URM stands for Under-Represented Minority and includes American Indian or Alaska Native; Black or African-American; Hispanic / Latino race/ethnicity groups

Applications - Admitted by Race/Ethnicity

Health Informatics Masters
Fall 2013 - Fall 2017



Notes: 1) URM stands for Under-Represented Minority and includes American Indian or Alaska Native; Black or African-American; Hispanic / Latino race/ethnicity groups

2) Individual URM groups, Native Hawaiian Pacific Islander, Two or More Races, and Other race/ethnicity categories left off this charts due to relatively low numbers

**Enrollment - New
by Race/Ethnicity**

Health Informatics Masters

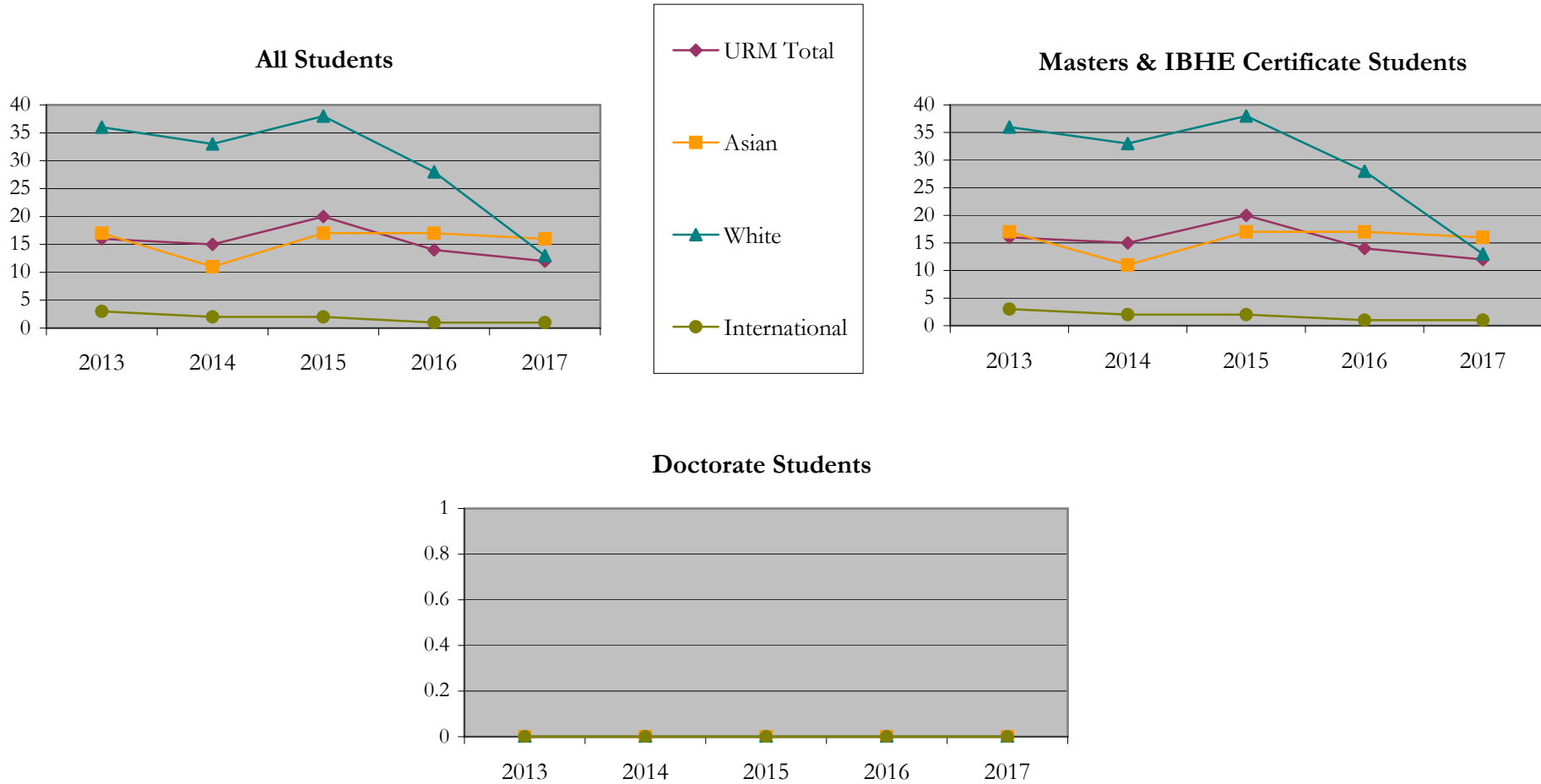
Fall 2013 - Fall 2017

		Total	Under Represented Minorities (URM)								Asian		Native Hawaiian or Pacific Islander		White		Two or More Races		International		Not Reported
			American Indian or Alaska Native		Black or African American		Hispanic / Latino		URM Total												
			Count	%	Count	%	Count	%	Count	%											
All	2013	78	0	0.0	12	15.4	4	5.1	16	20.5	17	21.8	2	2.6	36	46.2	2	2.6	3	3.8	2
	2014	63	0	0.0	14	22.2	1	1.6	15	23.8	11	17.5	0	0.0	33	52.4	0	0.0	2	3.2	2
	2015	89	0	0.0	16	18.0	4	4.5	20	22.5	17	19.1	0	0.0	38	42.7	3	3.4	2	2.2	9
	2016	64	0	0.0	11	17.2	3	4.7	14	21.9	17	26.6	1	1.6	28	43.8	2	3.1	1	1.6	1
	2017	42	1	2.4	7	16.7	4	9.5	12	28.6	16	38.1	0	0.0	13	31.0	0	0.0	1	2.4	0
Masters & IBHE Certificate	2013	78	0	0.0	12	15.4	4	5.1	16	20.5	17	21.8	2	2.6	36	46.2	2	2.6	3	3.8	2
	2014	63	0	0.0	14	22.2	1	1.6	15	23.8	11	17.5	0	0.0	33	52.4	0	0.0	2	3.2	2
	2015	89	0	0.0	16	18.0	4	4.5	20	22.5	17	19.1	0	0.0	38	42.7	3	3.4	2	2.2	9
	2016	64	0	0.0	11	17.2	3	4.7	14	21.9	17	26.6	1	1.6	28	43.8	2	3.1	1	1.6	1
	2017	42	1	2.4	7	16.7	4	9.5	12	28.6	16	38.1	0	0.0	13	31.0	0	0.0	1	2.4	0
Doctorate	2013	0	0	0.0	0	0.0	0	0.0	0	0.0	0	0.0	0	0.0	0	0.0	0	0.0	0	0.0	0
	2014	0	0	0.0	0	0.0	0	0.0	0	0.0	0	0.0	0	0.0	0	0.0	0	0.0	0	0.0	0
	2015	0	0	0.0	0	0.0	0	0.0	0	0.0	0	0.0	0	0.0	0	0.0	0	0.0	0	0.0	0
	2016	0	0	0.0	0	0.0	0	0.0	0	0.0	0	0.0	0	0.0	0	0.0	0	0.0	0	0.0	0
	2017	0	0	0.0	0	0.0	0	0.0	0	0.0	0	0.0	0	0.0	0	0.0	0	0.0	0	0.0	0
Non-Degree & Campus Certificate	2013	0	0	0.0	0	0.0	0	0.0	0	0.0	0	0.0	0	0.0	0	0.0	0	0.0	0	0.0	0
	2014	0	0	0.0	0	0.0	0	0.0	0	0.0	0	0.0	0	0.0	0	0.0	0	0.0	0	0.0	0
	2015	0	0	0.0	0	0.0	0	0.0	0	0.0	0	0.0	0	0.0	0	0.0	0	0.0	0	0.0	0
	2016	0	0	0.0	0	0.0	0	0.0	0	0.0	0	0.0	0	0.0	0	0.0	0	0.0	0	0.0	0
	2017	0	0	0.0	0	0.0	0	0.0	0	0.0	0	0.0	0	0.0	0	0.0	0	0.0	0	0.0	0

Note: URM stands for Under-Represented Minority and includes American Indian or Alaska Native; Black or African-American; Hispanic / Latino race/ethnicity groups

Enrollment - New by Race/Ethnicity

Health Informatics Masters
Fall 2013 - Fall 2017



Notes: 1) URM stands for Under-Represented Minority and includes American Indian or Alaska Native; Black or African-American; Hispanic / Latino race/ethnicity groups

2) Individual URM groups, Native Hawaiian Pacific Islander, Two or More Races, and Other race/ethnicity categories left off this charts due to relatively low numbers

**Enrollment - Total
by Race/Ethnicity**

Health Informatics Masters

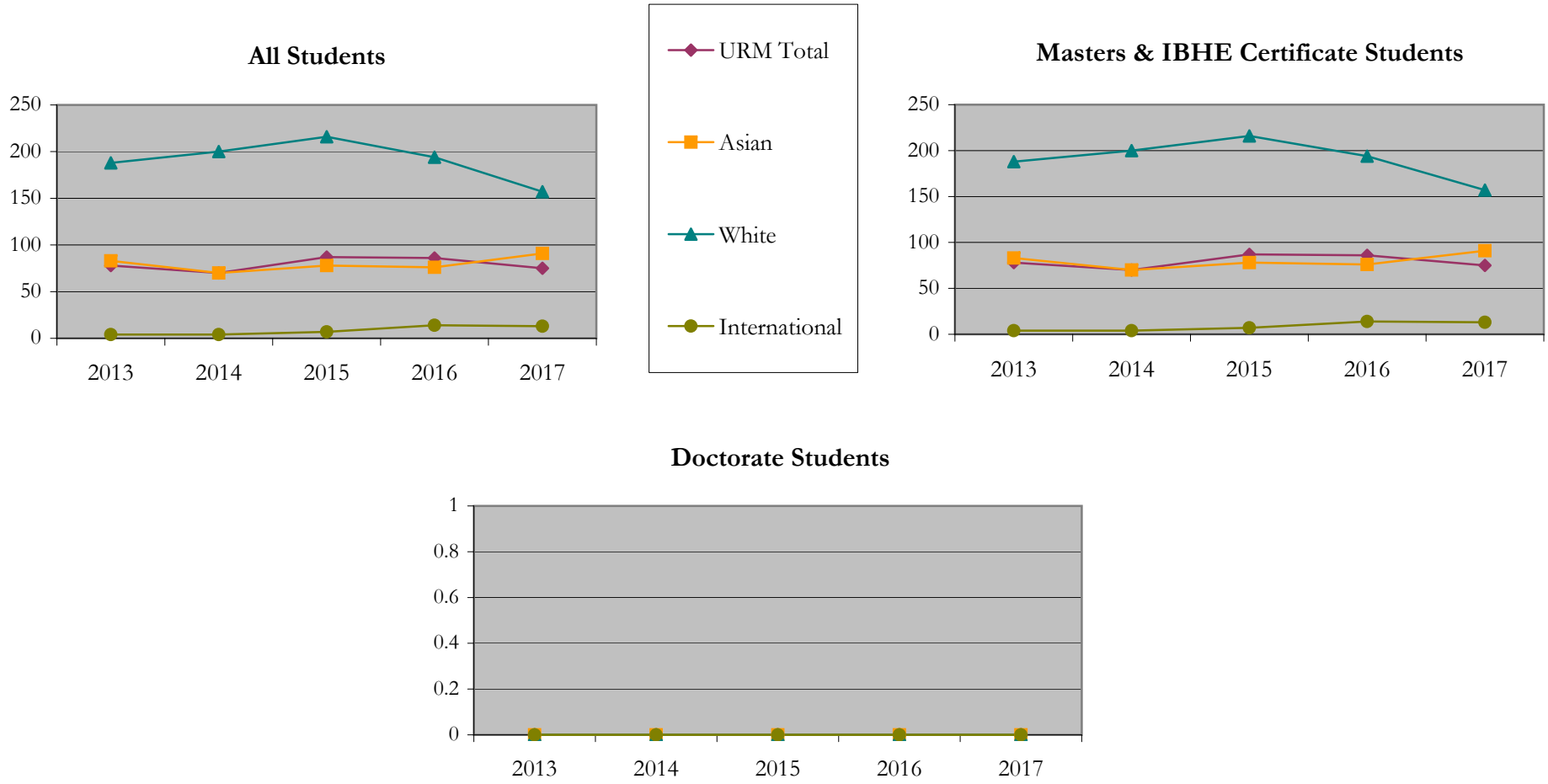
Fall 2013 - Fall 2017

		Total	Under Represented Minorities (URM)										Asian		Native Hawaiian or Pacific Islander		White		Two or More Races		International		Not Reported
			American Indian or Alaska Native		Black or African American		Hispanic / Latino		URM Total		Count	%	Count	%	Count	%	Count	%	Count	%	Count	%	Count
			Count	%	Count	%	Count	%	Count	%													
All	2013	389	1	0.3	63	16.2	14	3.6	78	20.1	83	21.3	4	1.0	188	48.3	8	2.1	4	1.0	24		
	2014	367	1	0.3	54	14.7	15	4.1	70	19.1	70	19.1	2	0.5	200	54.5	4	1.1	4	1.1	17		
	2015	423	0	0.0	62	14.7	25	5.9	87	20.6	78	18.4	2	0.5	216	51.1	8	1.9	7	1.7	25		
	2016	384	0	0.0	65	16.9	21	5.5	86	22.4	76	19.8	1	0.3	194	50.5	10	2.6	14	3.6	3		
	2017	349	1	0.3	56	16.0	18	5.2	75	21.5	91	26.1	0	0.0	157	45.0	8	2.3	13	3.7	5		
Masters & IBHE Certificate	2013	389	1	0.3	63	16.2	14	3.6	78	20.1	83	21.3	4	1.0	188	48.3	8	2.1	4	1.0	24		
	2014	367	1	0.3	54	14.7	15	4.1	70	19.1	70	19.1	2	0.5	200	54.5	4	1.1	4	1.1	17		
	2015	423	0	0.0	62	14.7	25	5.9	87	20.6	78	18.4	2	0.5	216	51.1	8	1.9	7	1.7	25		
	2016	384	0	0.0	65	16.9	21	5.5	86	22.4	76	19.8	1	0.3	194	50.5	10	2.6	14	3.6	3		
	2017	349	1	0.3	56	16.0	18	5.2	75	21.5	91	26.1	0	0.0	157	45.0	8	2.3	13	3.7	5		
Doctorate	2013	0	0	0.0	0	0.0	0	0.0	0	0.0	0	0.0	0	0.0	0	0.0	0	0.0	0	0.0	0		
	2014	0	0	0.0	0	0.0	0	0.0	0	0.0	0	0.0	0	0.0	0	0.0	0	0.0	0	0.0	0		
	2015	0	0	0.0	0	0.0	0	0.0	0	0.0	0	0.0	0	0.0	0	0.0	0	0.0	0	0.0	0		
	2016	0	0	0.0	0	0.0	0	0.0	0	0.0	0	0.0	0	0.0	0	0.0	0	0.0	0	0.0	0		
	2017	0	0	0.0	0	0.0	0	0.0	0	0.0	0	0.0	0	0.0	0	0.0	0	0.0	0	0.0	0		
Non-Degree & Campus Certificate	2013	0	0	0.0	0	0.0	0	0.0	0	0.0	0	0.0	0	0.0	0	0.0	0	0.0	0	0.0	0		
	2014	0	0	0.0	0	0.0	0	0.0	0	0.0	0	0.0	0	0.0	0	0.0	0	0.0	0	0.0	0		
	2015	0	0	0.0	0	0.0	0	0.0	0	0.0	0	0.0	0	0.0	0	0.0	0	0.0	0	0.0	0		
	2016	0	0	0.0	0	0.0	0	0.0	0	0.0	0	0.0	0	0.0	0	0.0	0	0.0	0	0.0	0		
	2017	0	0	0.0	0	0.0	0	0.0	0	0.0	0	0.0	0	0.0	0	0.0	0	0.0	0	0.0	0		

Note: URM stands for Under-Represented Minority and includes American Indian or Alaska Native; Black or African-American; Hispanic / Latino race/ethnicity groups

Enrollment - Total by Race/Ethnicity

Health Informatics Masters
Fall 2013 - Fall 2017



Notes: 1) URM stands for Under-Represented Minority and includes American Indian or Alaska Native; Black or African-American; Hispanic / Latino race/ethnicity groups
2) Individual URM groups, Native Hawaiian Pacific Islander, Two or More Races, and Other race/ethnicity categories left off this charts due to relatively low numbers

Enrollment

by Student Type, Enrollment Time, and Gender

Health Informatics Masters

Fall 2013 - Fall 2017

		Total	New		Continuing		Male		Female		Gender Not Reported	Part-time		Full-time	
			Count	%	Count	%	Count	%	Count	%		Count	%	Count	%
All	2013	389	78	20.1	311	79.9	117	30.1	266	68.4	6	361	92.8	28	7.2
	2014	367	63	17.2	304	82.8	100	27.2	263	71.7	4	345	94.0	22	6.0
	2015	423	89	21.0	334	79.0	122	28.8	295	69.7	6	405	95.7	18	4.3
	2016	384	64	16.7	320	83.3	128	33.3	254	66.1	2	362	94.3	22	5.7
	2017	349	42	12.0	307	88.0	124	35.5	225	64.5	0	327	93.7	22	6.3
Masters & IBHE Certificate	2013	389	78	20.1	311	79.9	117	30.1	266	68.4	6	361	92.8	28	7.2
	2014	367	63	17.2	304	82.8	100	27.2	263	71.7	4	345	94.0	22	6.0
	2015	423	89	21.0	334	79.0	122	28.8	295	69.7	6	405	95.7	18	4.3
	2016	384	64	16.7	320	83.3	128	33.3	254	66.1	2	362	94.3	22	5.7
	2017	349	42	12.0	307	88.0	124	35.5	225	64.5	0	327	93.7	22	6.3
Doctorate	2013	0	0	0.0	0	0.0	0	0.0	0	0.0	0	0	0.0	0	0.0
	2014	0	0	0.0	0	0.0	0	0.0	0	0.0	0	0	0.0	0	0.0
	2015	0	0	0.0	0	0.0	0	0.0	0	0.0	0	0	0.0	0	0.0
	2016	0	0	0.0	0	0.0	0	0.0	0	0.0	0	0	0.0	0	0.0
	2017	0	0	0.0	0	0.0	0	0.0	0	0.0	0	0	0.0	0	0.0
Non-Degree & Campus Certificate	2013	0	0	0.0	0	0.0	0	0.0	0	0.0	0	0	0.0	0	0.0
	2014	0	0	0.0	0	0.0	0	0.0	0	0.0	0	0	0.0	0	0.0
	2015	0	0	0.0	0	0.0	0	0.0	0	0.0	0	0	0.0	0	0.0
	2016	0	0	0.0	0	0.0	0	0.0	0	0.0	0	0	0.0	0	0.0
	2017	0	0	0.0	0	0.0	0	0.0	0	0.0	0	0	0.0	0	0.0

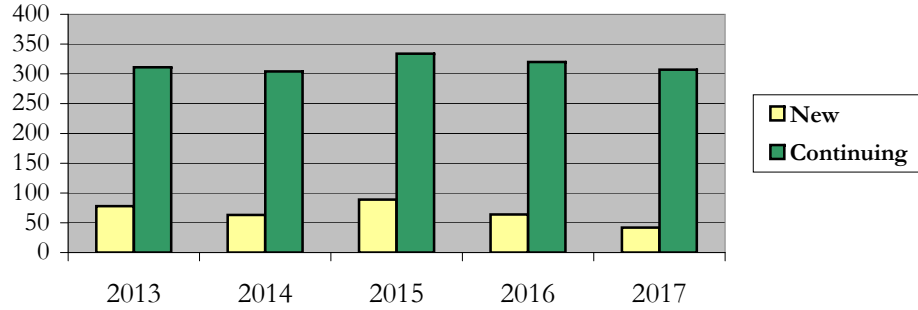
Enrollment

by Student Type, Enrollment Time, and Gender (All Students)

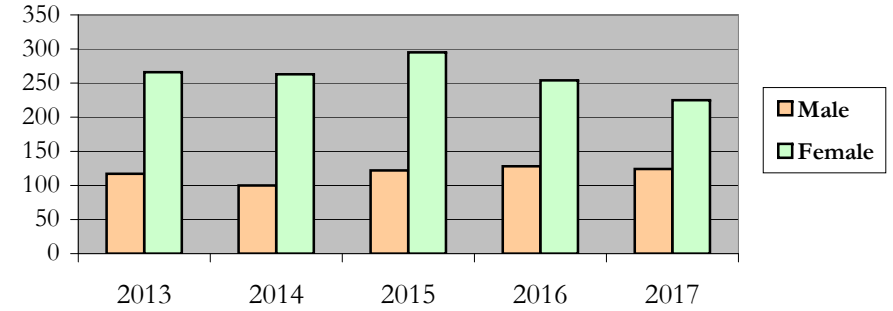
Health Informatics Masters

Fall 2013 - Fall 2017

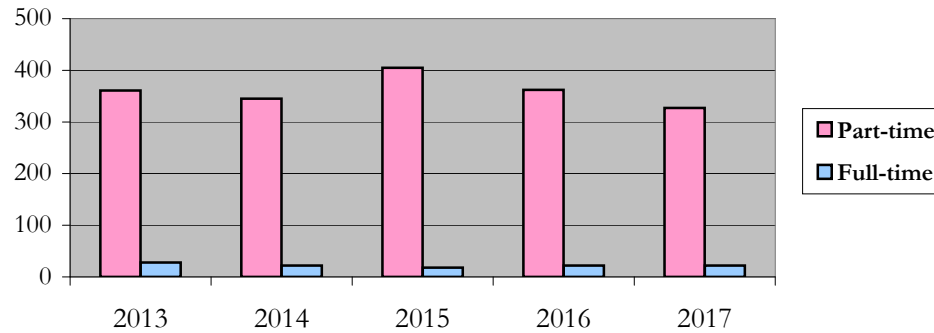
New and Continuing Enrollment



Enrollment by Gender



Enrollment by Student Enrollment Time

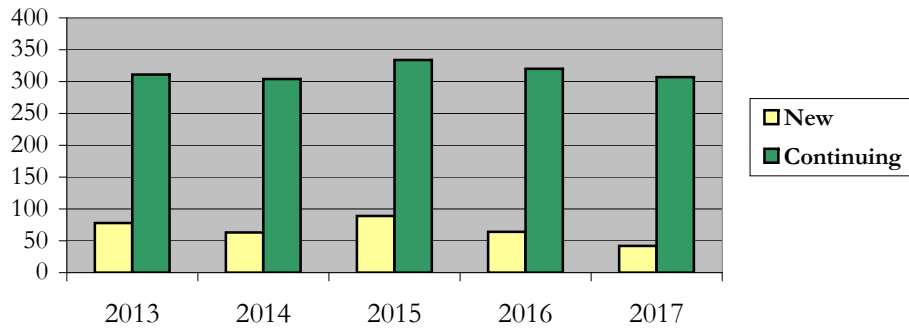


Enrollment by Student Type, Enrollment Time, and Gender (Master's Students)

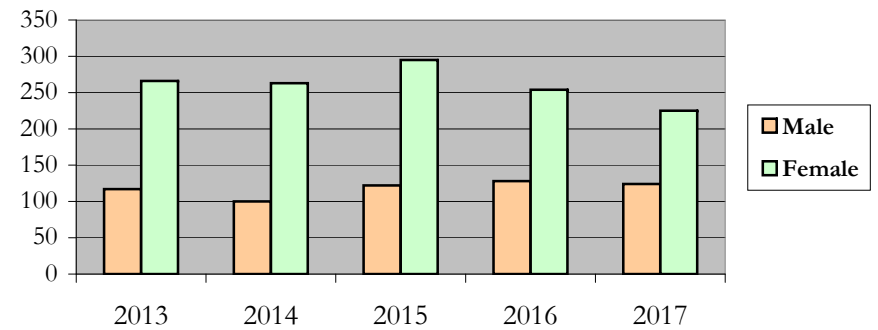
Health Informatics Masters

Fall 2013 - Fall 2017

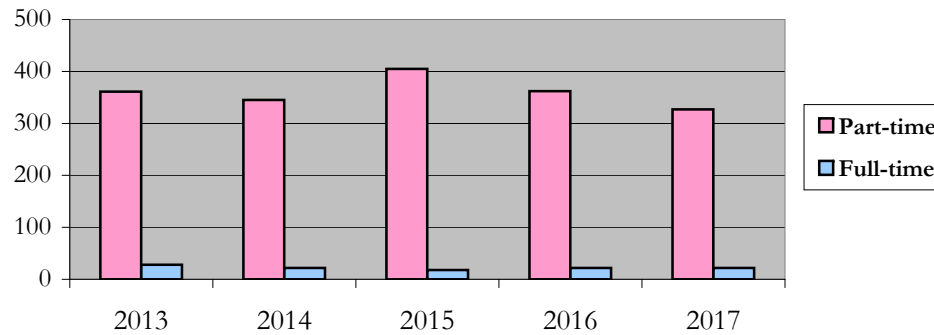
New and Continuing Enrollment



Enrollment by Gender



Enrollment by Student Enrollment Time



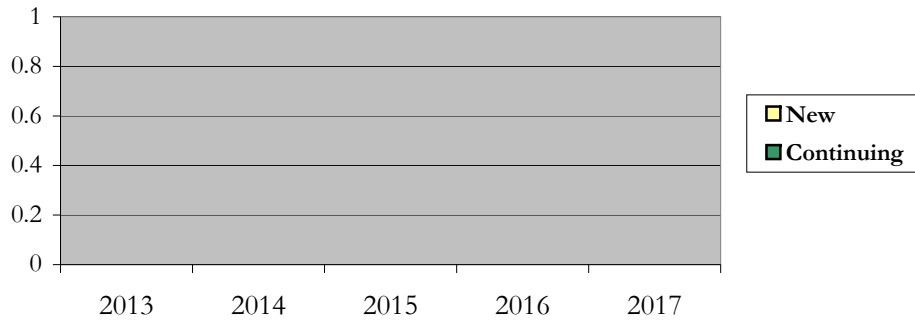
Enrollment

by Student Type, Enrollment Time, and Gender (Doctorate Students)

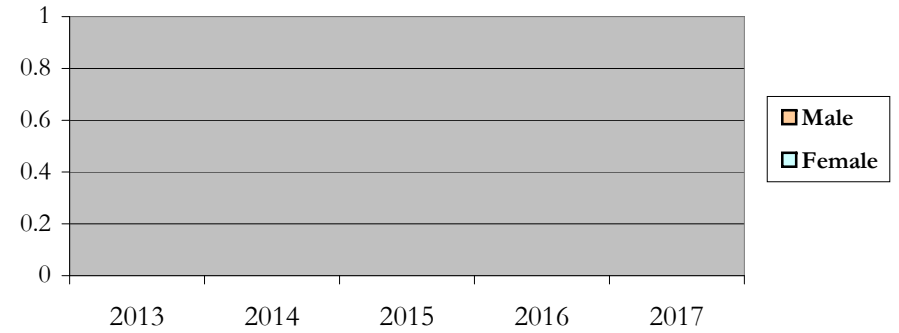
Health Informatics Masters

Fall 2013 - Fall 2017

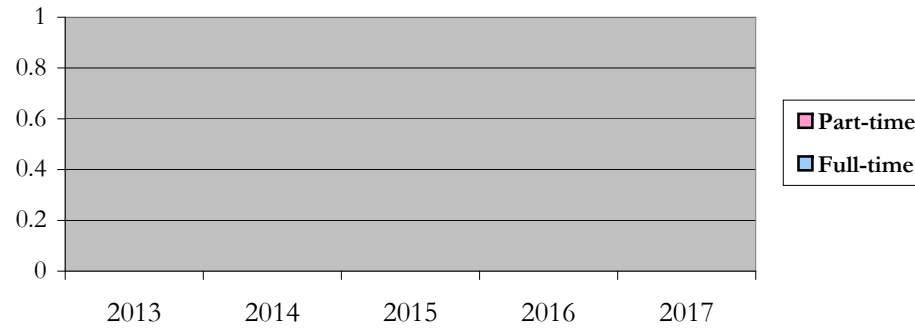
New and Continuing Enrollment



Enrollment by Gender



Enrollment by Student Enrollment Time



Degrees Conferred by Race/Ethnicity

Health Informatics Masters

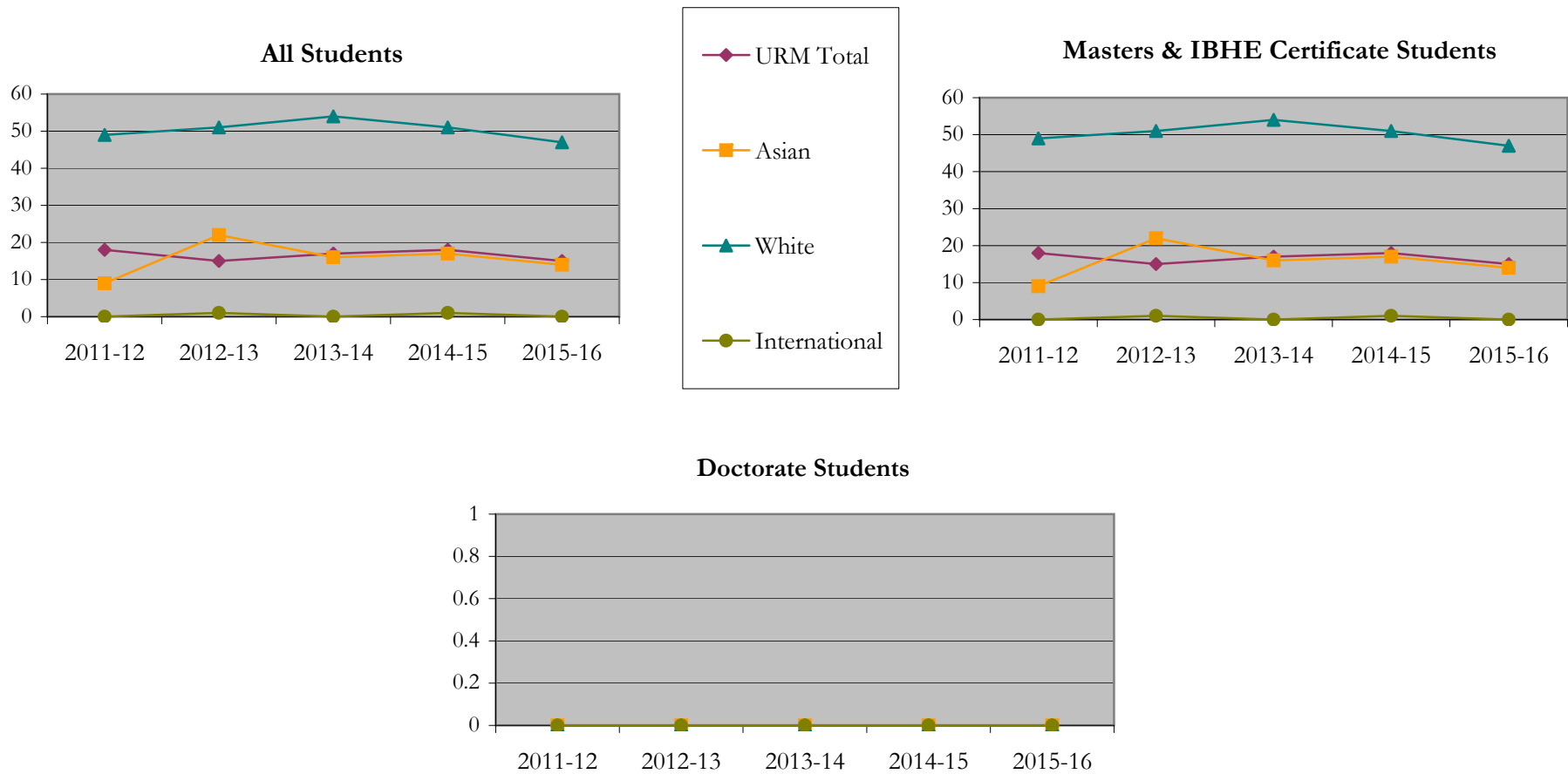
Fall 2013 - Fall 2017

		Total	Under Represented Minorities (URM)								Asian	Native Hawaiian or Pacific Islander		White		Two or More Races		International		Not Reported	
			American Indian or Alaska Native		Black or African American		Hispanic / Latino		URM Total			Count	%	Count	%	Count	%	Count	%	Count	%
			Count	%	Count	%	Count	%	Count	%											
All	2012 - 13	82	0	0.0	14	17.1	4	4.9	18	22.0	9	11.0	1	1.2	49	59.8	1	1.2	0	0.0	4
	2013 - 14	104	0	0.0	14	13.5	1	1.0	15	14.4	22	21.2	1	1.0	51	49.0	5	4.8	1	1.0	9
	2014 - 15	93	0	0.0	15	16.1	2	2.2	17	18.3	16	17.2	0	0.0	54	58.1	1	1.1	0	0.0	5
	2015 - 16	95	1	1.1	10	10.5	7	7.4	18	18.9	17	17.9	2	2.1	51	53.7	1	1.1	1	1.1	5
	2016 - 17	78	0	0.0	10	12.8	5	6.4	15	19.2	14	17.9	0	0.0	47	60.3	2	2.6	0	0.0	0
Masters & IBHE Certificate	2012 - 13	82	0	0.0	14	17.1	4	4.9	18	22.0	9	11.0	1	1.2	49	59.8	1	1.2	0	0.0	4
	2013 - 14	104	0	0.0	14	13.5	1	1.0	15	14.4	22	21.2	1	1.0	51	49.0	5	4.8	1	1.0	9
	2014 - 15	93	0	0.0	15	16.1	2	2.2	17	18.3	16	17.2	0	0.0	54	58.1	1	1.1	0	0.0	5
	2015 - 16	95	1	1.1	10	10.5	7	7.4	18	18.9	17	17.9	2	2.1	51	53.7	1	1.1	1	1.1	5
	2016 - 17	78	0	0.0	10	12.8	5	6.4	15	19.2	14	17.9	0	0.0	47	60.3	2	2.6	0	0.0	0
Doctorate	2012 - 13	0	0	0.0	0	0.0	0	0.0	0	0.0	0	0.0	0	0.0	0	0.0	0	0.0	0	0.0	0
	2013 - 14	0	0	0.0	0	0.0	0	0.0	0	0.0	0	0.0	0	0.0	0	0.0	0	0.0	0	0.0	0
	2014 - 15	0	0	0.0	0	0.0	0	0.0	0	0.0	0	0.0	0	0.0	0	0.0	0	0.0	0	0.0	0
	2015 - 16	0	0	0.0	0	0.0	0	0.0	0	0.0	0	0.0	0	0.0	0	0.0	0	0.0	0	0.0	0
	2016 - 17	0	0	0.0	0	0.0	0	0.0	0	0.0	0	0.0	0	0.0	0	0.0	0	0.0	0	0.0	0
Non-Degree & Campus Certificate	2012 - 13	0	0	0.0	0	0.0	0	0.0	0	0.0	0	0.0	0	0.0	0	0.0	0	0.0	0	0.0	0
	2013 - 14	0	0	0.0	0	0.0	0	0.0	0	0.0	0	0.0	0	0.0	0	0.0	0	0.0	0	0.0	0
	2014 - 15	0	0	0.0	0	0.0	0	0.0	0	0.0	0	0.0	0	0.0	0	0.0	0	0.0	0	0.0	0
	2015 - 16	0	0	0.0	0	0.0	0	0.0	0	0.0	0	0.0	0	0.0	0	0.0	0	0.0	0	0.0	0
	2016 - 17	0	0	0.0	0	0.0	0	0.0	0	0.0	0	0.0	0	0.0	0	0.0	0	0.0	0	0.0	0

Note: Each row represents a fiscal year, beginning with Summer term and ending with Spring.

Degrees Conferred by Race/Ethnicity

Health Informatics Masters
Fall 2013 - Fall 2017



Notes: 1) URM stands for Under-Represented Minority and includes American Indian or Alaska Native; Black or African-American; Hispanic / Latino race/ethnicity groups
 2) Individual URM groups, Native Hawaiian Pacific Islander, Two or More Races, and Other race/ethnicity categories left off this charts due to relatively low numbers

Degrees Conferred
by Gender

Health Informatics Masters

Fall 2013 - Fall 2017

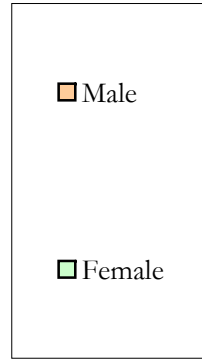
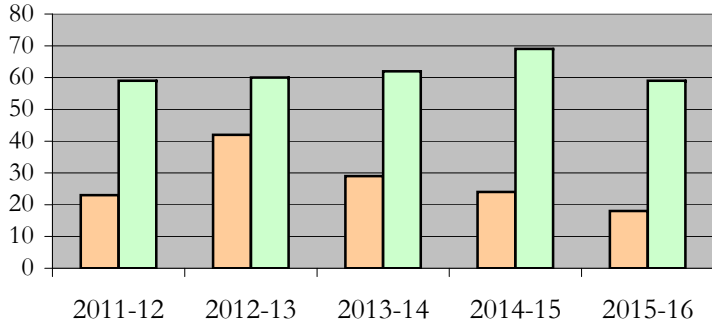
		Total	Male		Female		Not Reported
			Count	%	Count	%	
All	2012 - 13	82	23	28.0	59	72.0	0
	2013 - 14	104	42	40.4	60	57.7	2
	2014 - 15	93	29	31.2	62	66.7	2
	2015 - 16	95	24	25.3	69	72.6	2
	2016 - 17	78	18	23.1	59	75.6	1
Masters & IBHE Certificate	2012 - 13	82	23	28.0	59	72.0	0
	2013 - 14	104	42	40.4	60	57.7	2
	2014 - 15	93	29	31.2	62	66.7	2
	2015 - 16	95	24	25.3	69	72.6	2
	2016 - 17	78	18	23.1	59	75.6	1
Doctorate	2012 - 13	0	0	0.0	0	0.0	0
	2013 - 14	0	0	0.0	0	0.0	0
	2014 - 15	0	0	0.0	0	0.0	0
	2015 - 16	0	0	0.0	0	0.0	0
	2016 - 17	0	0	0.0	0	0.0	0
Campus Certificates	2012 - 13	0	0	0.0	0	0.0	0
	2013 - 14	0	0	0.0	0	0.0	0
	2014 - 15	0	0	0.0	0	0.0	0
	2015 - 16	0	0	0.0	0	0.0	0
	2016 - 17	0	0	0.0	0	0.0	0

Note: Each row represents a fiscal year, beginning with Summer term and ending with Spring.

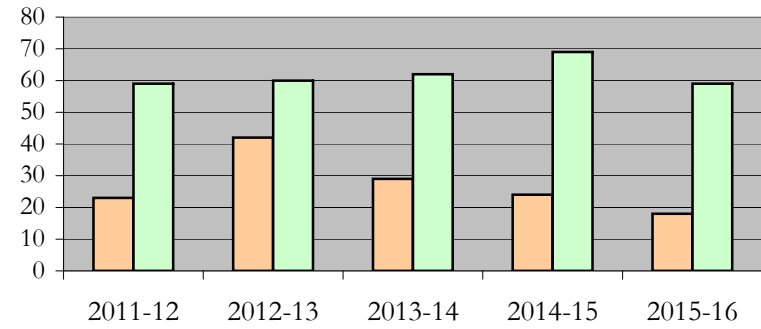
Degrees Conferred by Gender

Health Informatics Masters
Fall 2013 - Fall 2017

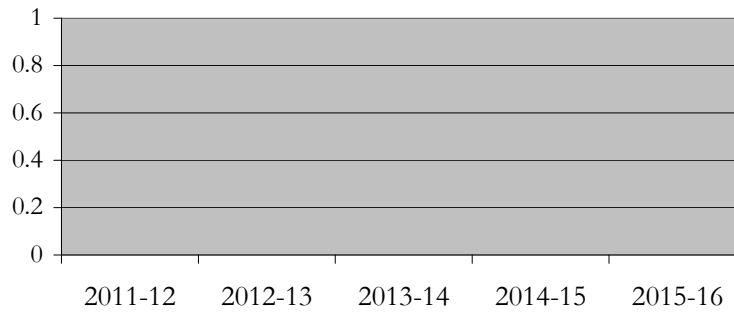
All Students



Masters & IBHE Certificate Students



Doctorate Students



Appendix A

Health Informatics Masters

Fall 2013 - Fall 2017

List of program codes included in this document

20FS1303MS

20FS1303MSU

Notes: 1) Program codes are sorted by alphabetical order in column-wise fashion

2) Program codes highlighted in yellow did not have applications, enrollment, nor degrees conferred in the covered period