

Matriculation

Diversity Pipeline

Health_Informatics_MS [20FS1303MSU]

Fall 2013 through Fall 2017

Fall Semester Year	Applied					Admitted					Non-URM Admitted to Applied Yield %	URM Admitted to Applied Yield %	New Enrollment					Non-URM Enrolled to Admitted Yield %	URM Enrolled to Admitted Yield %	Total Enrollment				
	Grand Total	Non-URM Total		URM Total		Grand Total	Non-URM Total		URM Total				Grand Total	Non-URM Total		URM Total				Grand Total	Non-URM Total		URM Total	
		Count	%	Count	%		Count	%	Count	%				Count	%	Count	%				Count	%	Count	%
	Count	%	Count	%	Count	%	Count	%	Count	%			Count	%	Count	%	Count			%	Count	%	Count	%
2013	126	93	73.8%	33	26.2%	91	69	75.8%	22	24.2%	74.2%	66.7%	77	61	79.2%	16	20.8%	88.4%	72.7%	386	309	80.1%	77	19.9%
2014	134	93	69.4%	41	30.6%	83	62	74.7%	21	25.3%	66.7%	51.2%	63	48	76.2%	15	23.8%	77.4%	71.4%	364	295	81.0%	69	19.0%
2015	179	132	73.7%	47	26.3%	111	85	76.6%	26	23.4%	64.4%	55.3%	89	69	77.5%	20	22.5%	81.2%	76.9%	422	335	79.4%	87	20.6%
2016	137	99	72.3%	38	27.7%	88	68	77.3%	20	22.7%	68.7%	52.6%	64	50	78.1%	14	21.9%	73.5%	70.0%	384	298	77.6%	86	22.4%
2017	91	55	60.4%	36	39.6%	56	40	71.4%	16	28.6%	72.7%	44.4%	42	30	71.4%	12	28.6%	75.0%	75.0%	347	273	78.7%	74	21.3%
Average	133	94	70.8%	39	29.2%	86	65	75.5%	21	24.5%	68.6%	53.8%	67	52	77.0%	15	23.0%	79.6%	73.3%	381	302	79.3%	78.6	20.7%

Note: URM stands for Under-Represented Minority and includes American Indian or Alaska Native; Black or African-American; Hispanic / Latino race/ethnicity groups

Applications, Admission, & New Enrollment Yields

by Race/Ethnicity & Gender

Health_Informatics_MS [20FS1303MSU]

Fall 2013 through Fall 2017

	Fall Semester Year	Total	Under Represented Minorities (URM)										Race/Eth Not Reported	Male	Female											
			American Indian or Alaska Native		Black or African American		Hispanic / Latino		URM Total		Asian					Native Hawaiian or Pacific Islander		White		Two or More Races		International				
		Count	% Yield	Count	% Yield	Count	% Yield	Count	% Yield	Count	% Yield	Count	% Yield	Count	% Yield	Count	% Yield	Count	% Yield	Count	% Yield	Count	% Yield	Count	% Yield	
Applied	2013	126		2		23		8		33		29		1		46		3		8		6		33		89
	2014	134		1		34		6		41		20		1		57		2		6		7		40		89
	2015	179		0		35		12		47		34		0		71		6		7		14		58		115
	2016	137		1		28		9		38		37		2		49		2		5		4		50		86
	2017	91		1	100.0	24		11		36		24		0		27		1		3		0		36		54
Admitted	2013	91	72.2	0	0.0	16	69.6	6	75.0	22	66.7	21	72.4	1	100.0	37	80.4	2	66.7	3	37.5	5	27	81.8	61	68.5
	2014	83	61.9	0	0.0	16	47.1	5	83.3	21	51.2	14	70.0	0	0.0	42	73.7	0	0.0	3	50.0	3	24	60.0	56	62.9
	2015	111	62.0	0	0.0	20	57.1	6	50.0	26	55.3	23	67.6	0	0.0	46	64.8	3	50.0	2	28.6	11	36	62.1	72	62.6
	2016	88	64.2	0	0.0	16	57.1	4	44.4	20	52.6	26	70.3	1	50.0	35	71.4	2	100.0	1	20.0	3	30	60.0	57	66.3
	2017	56	61.5	1	100.0	10	41.7	5	45.5	16	44.4	20	83.3	0	0.0	18	66.7	0	0.0	2	66.7	0	22	61.1	33	61.1
Enrolled	2013	77	84.6	0	0.0	12	75.0	4	66.7	16	72.7	17	81.0	2	200.0	35	94.6	2	100.0	3	100.0	2	21	77.8	55	90.2
	2014	63	75.9	0	0.0	14	87.5	1	20.0	15	71.4	11	78.6	0	0.0	33	78.6	0	0.0	2	66.7	2	17	70.8	45	80.4
	2015	89	80.2	0	0.0	16	80.0	4	66.7	20	76.9	17	73.9	0	0.0	38	82.6	3	100.0	2	100.0	9	26	72.2	61	84.7
	2016	64	72.7	0	0.0	11	68.8	3	75.0	14	70.0	17	65.4	1	100.0	28	80.0	2	100.0	1	100.0	1	24	80.0	40	70.2
	2017	42	75.0	1	100.0	7	70.0	4	80.0	12	75.0	16	80.0	0	0.0	13	72.2	0	0.0	1	50.0	0	19	86.4	23	69.7

Notes:

- 1) URM stands for Under-Represented Minority and includes American Indian or Alaska Native; Black or African-American; Hispanic / Latino race/ethnicity groups
- 2) Unreported Gender identification is not shown; Male and Female total may not match Total
- 3) In rare situations, the "% Yield" columns may be greater than 100. There are three potential reasons for this:
 - a) Students that received Graduate College approved transfers may not have an admission record for the program that they enrolled into.
 - b) Students with a secondary curriculum enrollment may not have an admission record for that secondary program.
 - c) Students who were newly enrolled in the summer term prior to the fall were added to the fall new enrollment totals.

Applications, Admission, & New Enrollment Yields, cont. by Race/Ethnicity & Gender

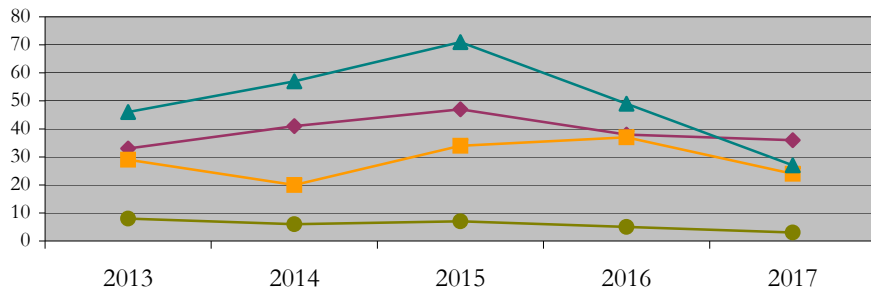
Health_Informatics_MS [20FS1303MSU]

Fall 2013 through Fall 2017

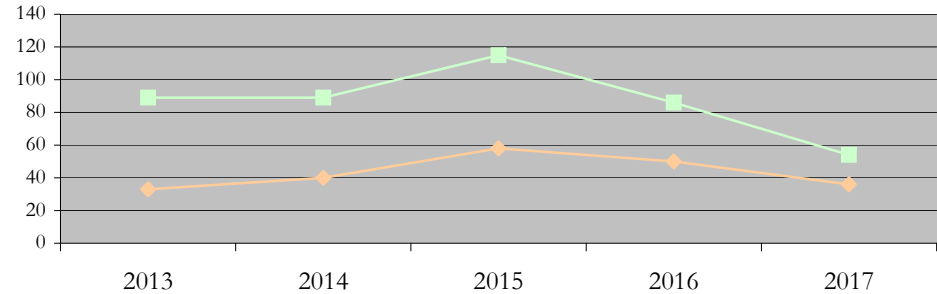
URM Total Asian White International

Male Female

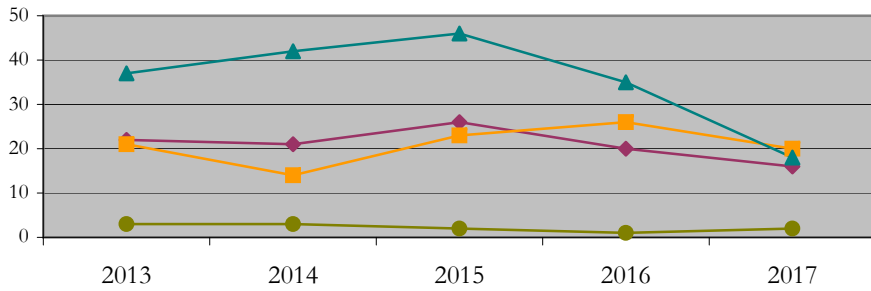
Applications by Race/Ethnicity



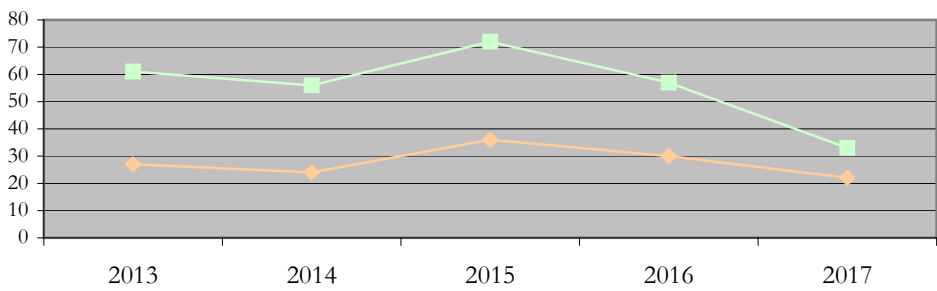
Applications by Gender



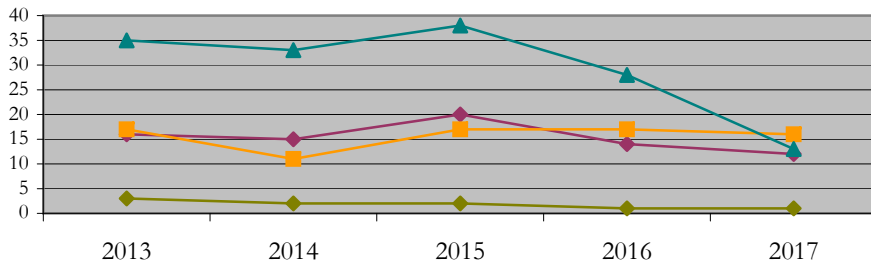
Admissions by Race/Ethnicity



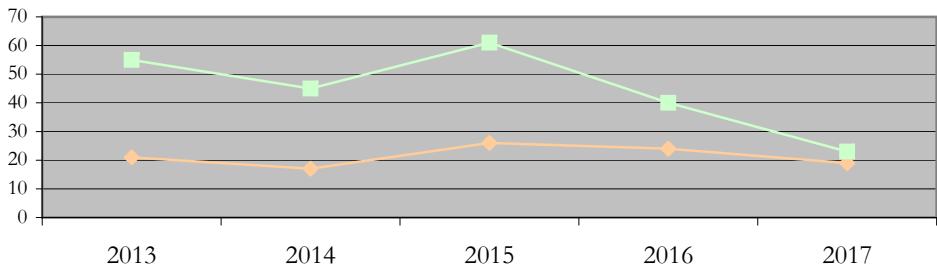
Admissions by Gender



New Enrollments by Race/Ethnicity



New Enrollments by Gender



Notes: 1) URM stands for Under-Represented Minority and includes American Indian or Alaska Native; Black or African-American; Hispanic / Latino race/ethnicity groups
2) Individual URM groups, Native Hawaiian Pacific Islander, Two or More Races, and Other race/ethnicity categories left off these charts due to relatively low numbers

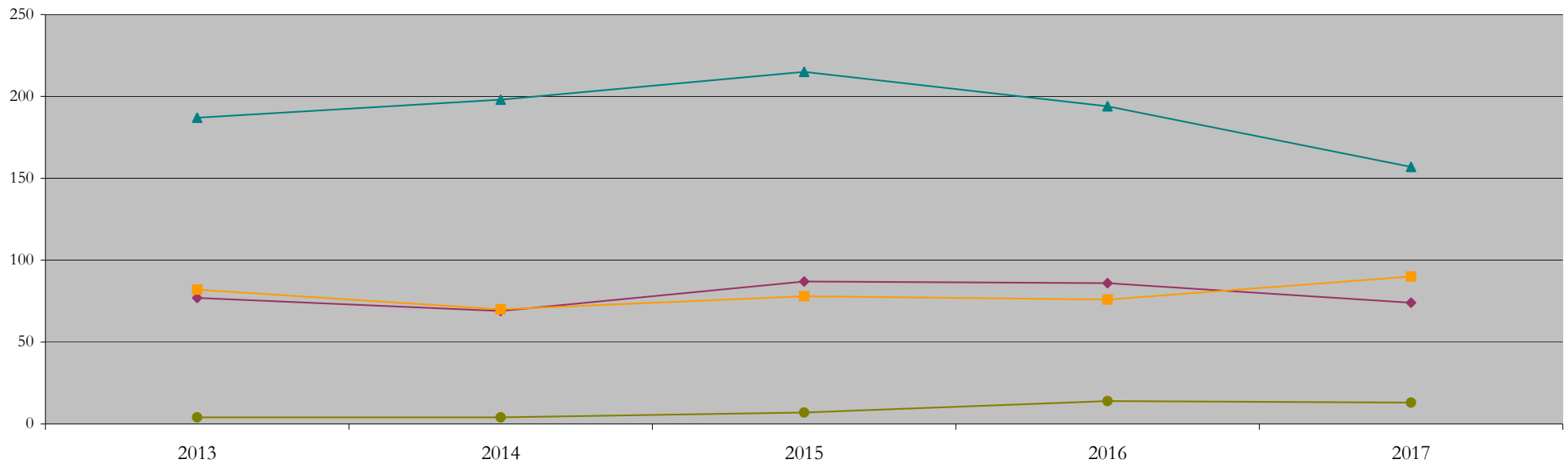
Total Enrollment (includes secondary curriculum)

by Race/Ethnicity

Health_Informatics_MS [20FS1303MSU]

Fall 2013 through Fall 2017

Fall Semester Year	Total	Under Represented Minorities (URM)																		
		American Indian or Alaska Native		Black or African American		Hispanic / Latino		URM Total		Asian		Native Hawaiian or Pacific Islander		White		Two or More Races		International		Race/Eth Not Reported
		Count	%	Count	%	Count	%	Count	%	Count	%	Count	%	Count	%	Count	%	Count	%	Count
2013	386	0	0.0	63	16.3	14	3.6	77	19.9	82	21.2	4	1.0	187	48.4	8	2.1	4	1.0	24
2014	364	0	0.0	54	14.8	15	4.1	69	19.0	70	19.2	2	0.5	198	54.4	4	1.1	4	1.1	17
2015	422	0	0.0	62	14.7	25	5.9	87	20.6	78	18.5	2	0.5	215	50.9	8	1.9	7	1.7	25
2016	384	0	0.0	65	16.9	21	5.5	86	22.4	76	19.8	1	0.3	194	50.5	10	2.6	14	3.6	3
2017	347	0	0.0	56	16.1	18	5.2	74	21.3	90	25.9	0	0.0	157	45.2	8	2.3	13	3.7	5



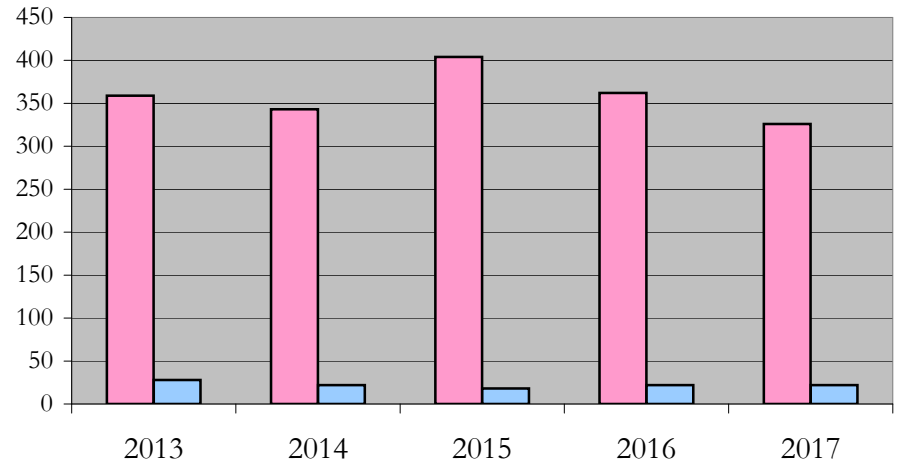
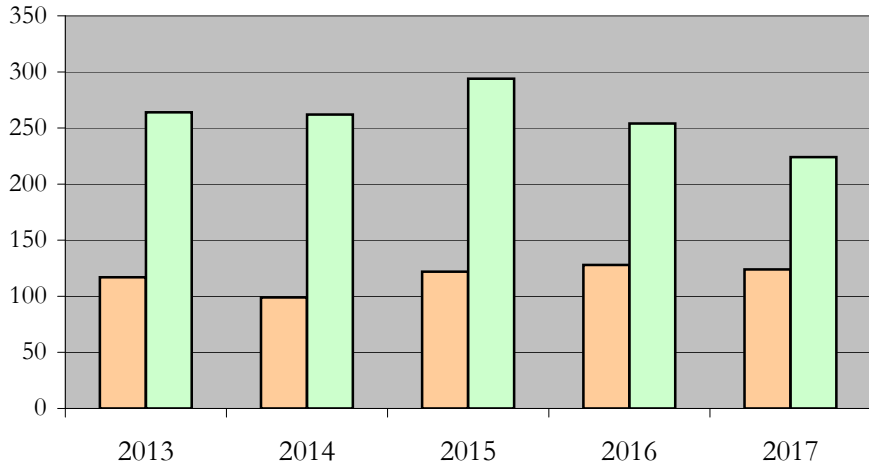
Notes: 1) URM stands for Under-Represented Minority and includes American Indian or Alaska Native; Black or African-American; Hispanic / Latino race/ethnicity groups
 2) Individual URM groups, Native Hawaiian Pacific Islander, Two or More Races, and Other race/ethnicity categories left off this chart due to relatively low numbers

**Total Enrollment (includes secondary curriculum)
by Student Type, Gender, and Enrollment Time**

Health_Informatics_MS [20FS1303MSU]

Fall 2013 through Fall 2017

Fall Semester Year	Total	New		Continuing		Male		Female		Gender Not Reported	Part-time		Full-time	
		Count	%	Count	%	Count	%	Count	%	Count	Count	%	Count	%
2013	386	77	19.9	309	80.1	117	30.3	264	68.4	5	359	93.0	28	7.3
2014	364	63	17.3	301	82.7	99	27.2	262	72.0	3	343	94.2	22	6.0
2015	422	89	21.1	333	78.9	122	28.9	294	69.7	6	404	95.7	18	4.3
2016	384	64	16.7	320	83.3	128	33.3	254	66.1	2	362	94.3	22	5.7
2017	347	42	12.1	305	87.9	124	35.7	224	64.6	-1	326	93.9	22	6.3



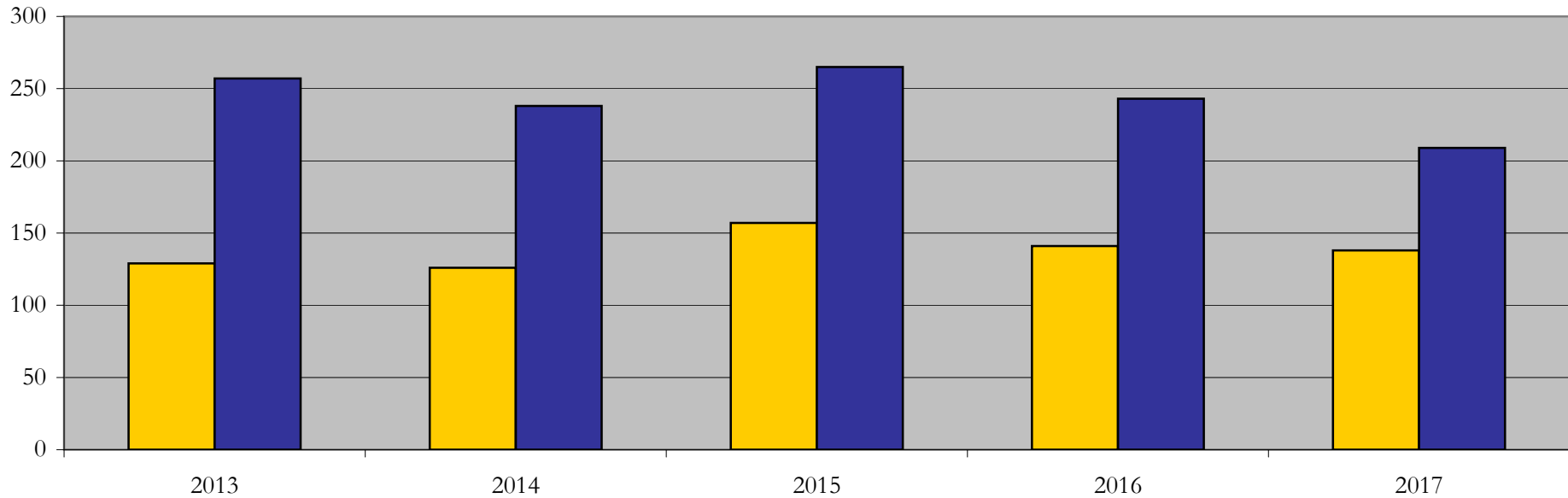
Enrollment & Degrees Conferred

by Primary/Secondary, Average Age, State Residency

Health_Informatics_MS [20FS1303MSU]

Fall 2013 through Fall 2017

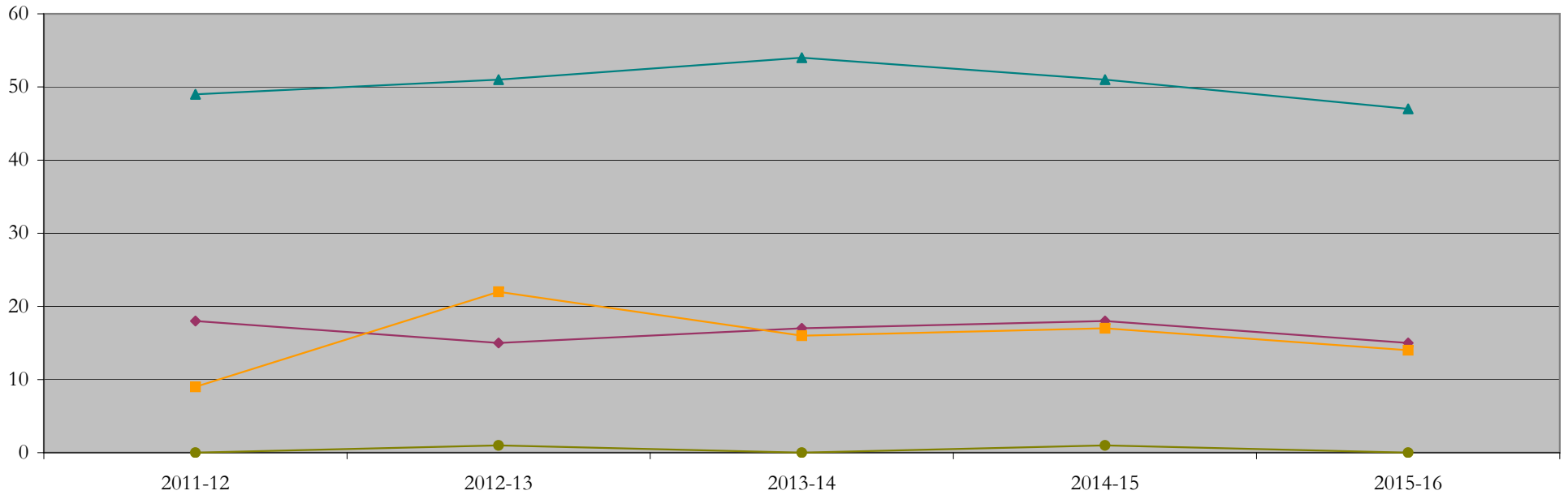
Fall Semester Year	Enrollment			Average Age			State Residency of Total Enrollment					
	Total	Primary	Secondary	Fall New Enrollment	Fall Continuing Enrollment	Academic Year Graduating Class	Residents			Non-Residents		
							Total Enrollment	New Enrollment	Continuing Enrollment	Total Enrollment	New Enrollment	Continuing Enrollment
2013	386	385	1	39	41	41	129	29	100	257	48	209
2014	364	359	5	37	41	40	126	25	101	238	38	200
2015	422	421	1	37	40	40	157	37	120	265	52	213
2016	384	383	1	36	38	42	141	25	116	243	39	204
2017	347	347	0	37	38	39	138	22	116	209	20	189



Degrees Conferred by Race/Ethnicity

Health_Informatics_MS [20FS1303MSU]
AY2011-12 through 2015-16

Academic Year	Total	Under Represented Minorities (URM)								Asian		Native Hawaiian or Pacific		White		Two or More Races		International		Not Reported
		American Indian or Alaska Native		Black or African American		Hispanic / Latino		URM Total		Count	%	Count	%	Count	%	Count	%	Count	%	
		Count	%	Count	%	Count	%	Count	%											
2012 - 2013	82	0	0.0	14	17.1	4	4.9	18	22.0	9	11.0	1	1.2	49	59.8	1	1.2	0	0.0	4
2013 - 2014	104	0	0.0	14	13.5	1	1.0	15	14.4	22	21.2	1	1.0	51	49.0	5	4.8	1	1.0	9
2014 - 2015	93	0	0.0	15	16.1	2	2.2	17	18.3	16	17.2	0	0.0	54	58.1	1	1.1	0	0.0	5
2015 - 2016	95	1	1.1	10	10.5	7	7.4	18	18.9	17	17.9	2	2.1	51	53.7	1	1.1	1	1.1	5
2016 - 2017	78	0	0.0	10	12.8	5	6.4	15	19.2	14	17.9	0	0.0	47	60.3	2	2.6	0	0.0	0



Notes: 1) URM stands for Under-Represented Minority and includes American Indian or Alaska Native; Black or African-American; Hispanic / Latino race/ethnicity groups
2) Individual URM groups, Native Hawaiian Pacific Islander, Two or More Races, and Other race/ethnicity categories left off this chart due to relatively low numbers

Degrees Conferred

by Gender

Health_Informatics_MS [20FS1303MSU]

AY2011-12 through 2015-16

Academic Year	Total	Male		Female		Not Reported
		Count	%	Count	%	
2012 - 2013	82	23	28.0	59	72.0	0
2013 - 2014	102	42	41.2	60	58.8	0
2014 - 2015	91	29	31.9	62	68.1	0
2015 - 2016	93	24	25.8	69	74.2	0
2016 - 2017	77	18	23.4	59	76.6	0

