

# Matriculation

## Diversity Pipeline

Biomedical\_Visualization\_MS [20FS1075MS]

Fall 2013 through Fall 2017

Fall Semester Year	Applied					Admitted					Non-URM Admitted to Applied Yield %	URM Admitted to Applied Yield %	New Enrollment					Non-URM Enrolled to Admitted Yield %	URM Enrolled to Admitted Yield %	Total Enrollment				
	Grand Total	Non-URM Total		URM Total		Grand Total	Non-URM Total		URM Total				Grand Total	Non-URM Total		URM Total				Grand Total	Non-URM Total		URM Total	
		Count	%	Count	%		Count	%	Count	%				Count	%	Count	%				Count	%	Count	%
	Count	%	Count	%	Count	%	Count	%	Count	%			Count	%	Count	%	Count			%	Count	%	Count	%
2013	55	51	92.7%	4	7.3%	32	29	90.6%	3	9.4%	56.9%	75.0%	20	17	85.0%	3	15.0%	58.6%	100.0%	41	37	90.2%	4	9.8%
2014	46	42	91.3%	4	8.7%	27	24	88.9%	3	11.1%	57.1%	75.0%	16	13	81.3%	3	18.8%	54.2%	100.0%	40	33	82.5%	7	17.5%
2015	56	54	96.4%	2	3.6%	31	29	93.5%	2	6.5%	53.7%	100.0%	19	17	89.5%	2	10.5%	58.6%	100.0%	35	30	85.7%	5	14.3%
2016	60	54	90.0%	6	10.0%	32	32	100.0%	0	0.0%	59.3%	0.0%	20	20	100.0%	0	0.0%	62.5%	0.0%	38	36	94.7%	2	5.3%
2017	53	48	90.6%	5	9.4%	27	26	96.3%	1	3.7%	54.2%	20.0%	21	20	95.2%	1	4.8%	76.9%	100.0%	43	42	97.7%	1	2.3%
<b>Average</b>	<b>54</b>	<b>50</b>	<b>92.2%</b>	<b>4</b>	<b>7.8%</b>	<b>30</b>	<b>28</b>	<b>94.0%</b>	<b>2</b>	<b>6.0%</b>	<b>56.2%</b>	<b>42.9%</b>	<b>19</b>	<b>17</b>	<b>90.6%</b>	<b>2</b>	<b>9.4%</b>	<b>62.1%</b>	<b>100.0%</b>	<b>39</b>	<b>36</b>	<b>90.4%</b>	<b>3.8</b>	<b>9.6%</b>

**Note:** URM stands for Under-Represented Minority and includes American Indian or Alaska Native; Black or African-American; Hispanic / Latino race/ethnicity groups

# Applications, Admission, & New Enrollment Yields

## by Race/Ethnicity & Gender

Biomedical\_Visualization\_MS [20FS1075MS]

Fall 2013 through Fall 2017

	Fall Semester Year	Total		Under Represented Minorities (URM)										Race/Eth Not Reported		Male		Female									
				American Indian or Alaska Native		Black or African American		Hispanic / Latino		URM Total		Asian								Native Hawaiian or Pacific Islander		White		Two or More Races		International	
		Count	% Yield	Count	% Yield	Count	% Yield	Count	% Yield	Count	% Yield	Count	% Yield	Count	% Yield	Count	% Yield	Count	% Yield	Count	% Yield	Count	% Yield	Count	% Yield		
Applied	2013	55		0		1		3		4		5		1		32		3		3		7		12		42	
	2014	46		0		2		2		4		4		0		23		7		6		2		5		41	
	2015	56		0		1		1		2		2		0		40		3		6		3		13		43	
	2016	60		0		3		3		6		7		0		32		4		9		2		7		53	
	2017	53		0		1		4		5		5		0		32		3		7		1		10		43	
		Count	% Yield	Count	% Yield	Count	% Yield	Count	% Yield	Count	% Yield	Count	% Yield	Count	% Yield	Count	% Yield	Count	% Yield	Count	% Yield	Count	% Yield	Count	% Yield	Count	% Yield
Admitted	2013	32	58.2	0	0.0	1	100.0	2	66.7	3	75.0	3	60.0	1	100.0	18	56.3	1	33.3	1	33.3	5		8	66.7	24	57.1
	2014	27	58.7	0	0.0	1	50.0	2	100.0	3	75.0	0	0.0	0	0.0	17	73.9	5	71.4	1	16.7	1		2	40.0	25	61.0
	2015	31	55.4	0	0.0	1	100.0	1	100.0	2	100.0	2	100.0	0	0.0	21	52.5	2	66.7	2	33.3	2		4	30.8	27	62.8
	2016	32	53.3	0	0.0	0	0.0	0	0.0	0	0.0	3	42.9	0	0.0	18	56.3	3	75.0	7	77.8	1		3	42.9	29	54.7
	2017	27	50.9	0	0.0	0	0.0	1	25.0	1	20.0	2	40.0	0	0.0	19	59.4	2	66.7	3	42.9	0		4	40.0	23	53.5
		Count	% Yield	Count	% Yield	Count	% Yield	Count	% Yield	Count	% Yield	Count	% Yield	Count	% Yield	Count	% Yield	Count	% Yield	Count	% Yield	Count	% Yield	Count	% Yield	Count	% Yield
Enrolled	2013	20	62.5	0	0.0	1	100.0	2	100.0	3	100.0	2	66.7	1	100.0	11	61.1	0	0.0	1	100.0	2		2	25.0	18	75.0
	2014	16	59.3	0	0.0	1	100.0	2	100.0	3	100.0	0	0.0	0	0.0	9	52.9	3	60.0	1	100.0	0		1	50.0	15	60.0
	2015	19	61.3	0	0.0	1	100.0	1	100.0	2	100.0	2	100.0	0	0.0	12	57.1	1	50.0	1	50.0	1		4	100.0	15	55.6
	2016	20	62.5	0	0.0	0	0.0	0	0.0	0	0.0	1	33.3	0	0.0	13	72.2	2	66.7	3	42.9	1		3	100.0	17	58.6
	2017	21	77.8	0	0.0	0	0.0	1	100.0	1	100.0	1	50.0	0	0.0	15	78.9	2	100.0	2	66.7	0		3	75.0	18	78.3

**Notes:**

- 1) URM stands for Under-Represented Minority and includes American Indian or Alaska Native; Black or African-American; Hispanic / Latino race/ethnicity groups
- 2) Unreported Gender identification is not shown; Male and Female total may not match Total
- 3) In rare situations, the "% Yield" columns may be greater than 100. There are three potential reasons for this:
  - a) Students that received Graduate College approved transfers may not have an admission record for the program that they enrolled into.
  - b) Students with a secondary curriculum enrollment may not have an admission record for that secondary program.
  - c) Students who were newly enrolled in the summer term prior to the fall were added to the fall new enrollment totals.

# Applications, Admission, & New Enrollment Yields, cont. by Race/Ethnicity & Gender

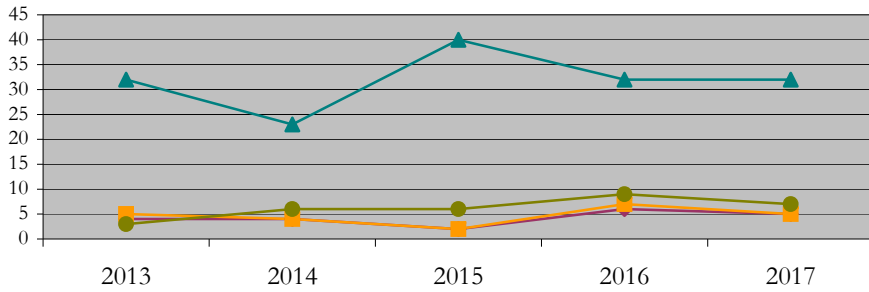
Biomedical\_Visualization\_MS [20FS1075MS]

Fall 2013 through Fall 2017

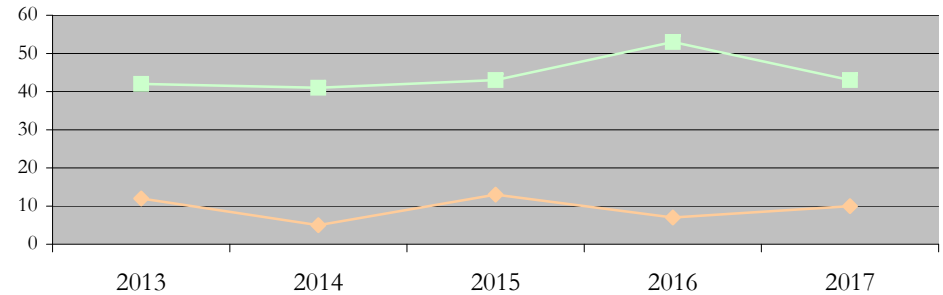
URM Total Asian White International

Male Female

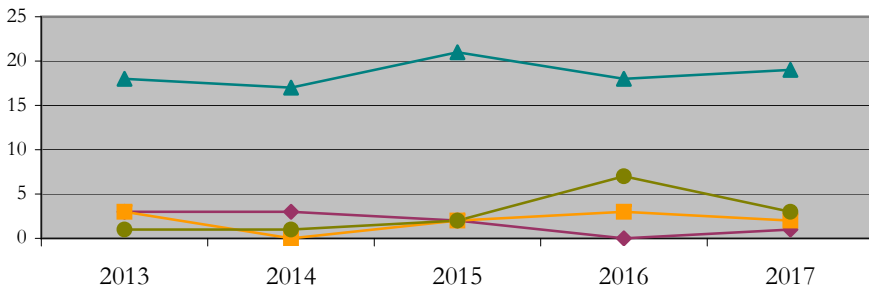
Applications by Race/Ethnicity



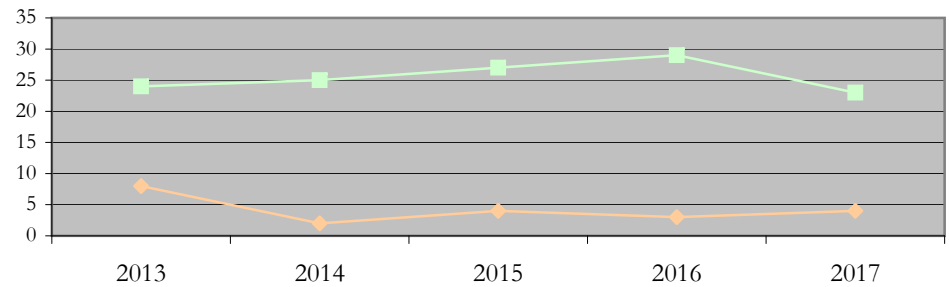
Applications by Gender



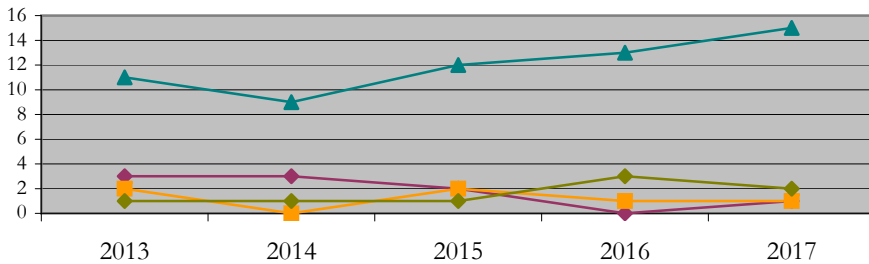
Admissions by Race/Ethnicity



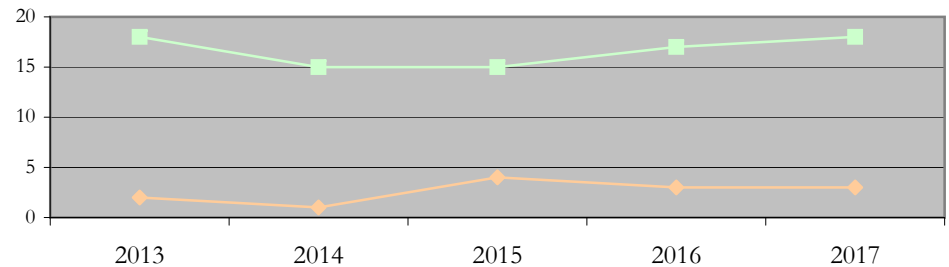
Admissions by Gender



New Enrollments by Race/Ethnicity



New Enrollments by Gender



**Notes:** 1) URM stands for Under-Represented Minority and includes American Indian or Alaska Native; Black or African-American; Hispanic / Latino race/ethnicity groups  
2) Individual URM groups, Native Hawaiian Pacific Islander, Two or More Races, and Other race/ethnicity categories left off these charts due to relatively low numbers

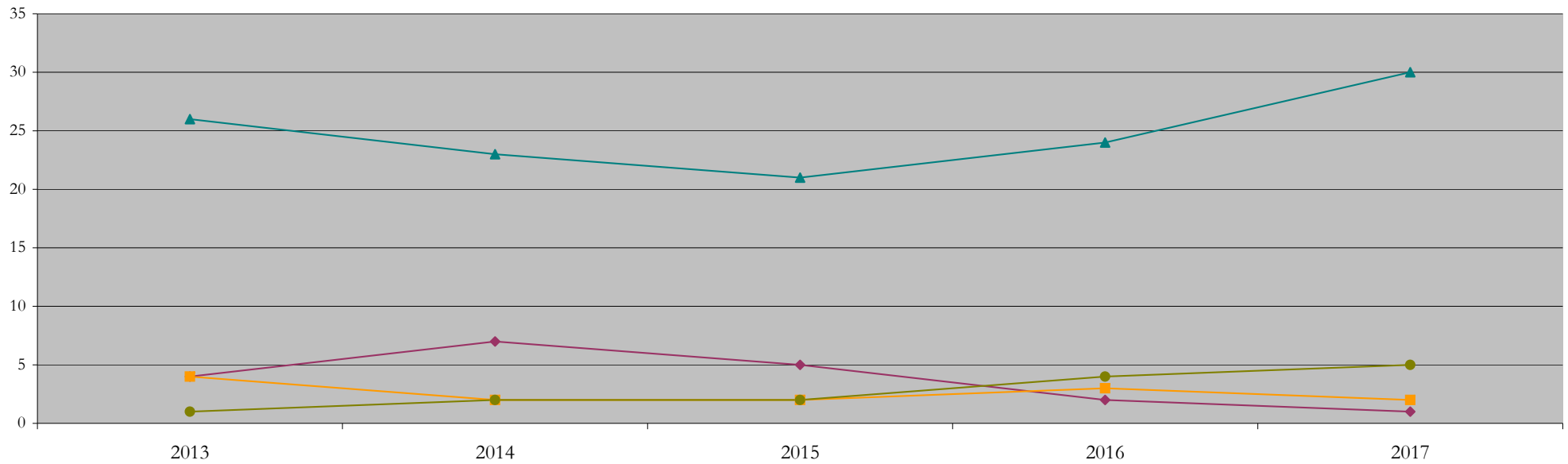
## Total Enrollment (includes secondary curriculum)

### by Race/Ethnicity

Biomedical\_Visualization\_MS [20FS1075MS]

Fall 2013 through Fall 2017

Fall Semester Year	Total	Under Represented Minorities (URM)																		
		American Indian or Alaska Native		Black or African American		Hispanic / Latino		URM Total		Asian		Native Hawaiian or Pacific Islander		White		Two or More Races		International		Race/Eth Not Reported
		Count	%	Count	%	Count	%	Count	%	Count	%	Count	%	Count	%	Count	%	Count	%	Count
2013	41	0	0.0	2	4.9	2	4.9	4	9.8	4	9.8	1	2.4	26	63.4	2	4.9	1	2.4	3
2014	40	0	0.0	3	7.5	4	10.0	7	17.5	2	5.0	0	0.0	23	57.5	3	7.5	2	5.0	3
2015	35	0	0.0	2	5.7	3	8.6	5	14.3	2	5.7	0	0.0	21	60.0	4	11.4	2	5.7	1
2016	38	0	0.0	1	2.6	1	2.6	2	5.3	3	7.9	0	0.0	24	63.2	3	7.9	4	10.5	2
2017	43	0	0.0	0	0.0	1	2.3	1	2.3	2	4.7	0	0.0	30	69.8	4	9.3	5	11.6	1



**Notes:** 1) URM stands for Under-Represented Minority and includes American Indian or Alaska Native; Black or African-American; Hispanic / Latino race/ethnicity groups  
 2) Individual URM groups, Native Hawaiian Pacific Islander, Two or More Races, and Other race/ethnicity categories left off this chart due to relatively low numbers

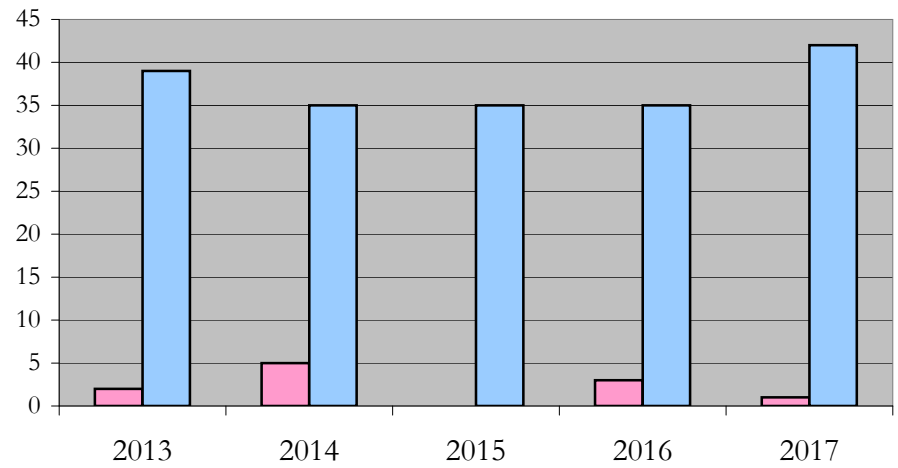
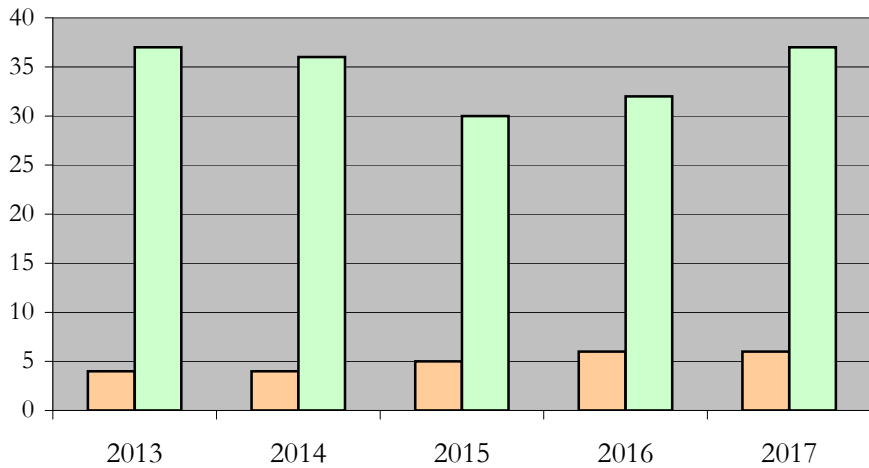
**Total Enrollment (includes secondary curriculum)**

**by Student Type, Gender, and Enrollment Time**

Biomedical\_Visualization\_MS [20FS1075MS]

Fall 2013 through Fall 2017

Fall Semester Year	Total	New		Continuing		Male		Female		Gender Not Reported	Part-time		Full-time	
		Count	%	Count	%	Count	%	Count	%	Count	Count	%	Count	%
2013	41	20	48.8	21	51.2	4	9.8	37	90.2	0	2	4.9	39	95.1
2014	40	16	40.0	24	60.0	4	10.0	36	90.0	0	5	12.5	35	87.5
2015	35	19	54.3	16	45.7	5	14.3	30	85.7	0	0	0.0	35	100.0
2016	38	20	52.6	18	47.4	6	15.8	32	84.2	0	3	7.9	35	92.1
2017	43	21	48.8	22	51.2	6	14.0	37	86.0	0	1	2.3	42	97.7



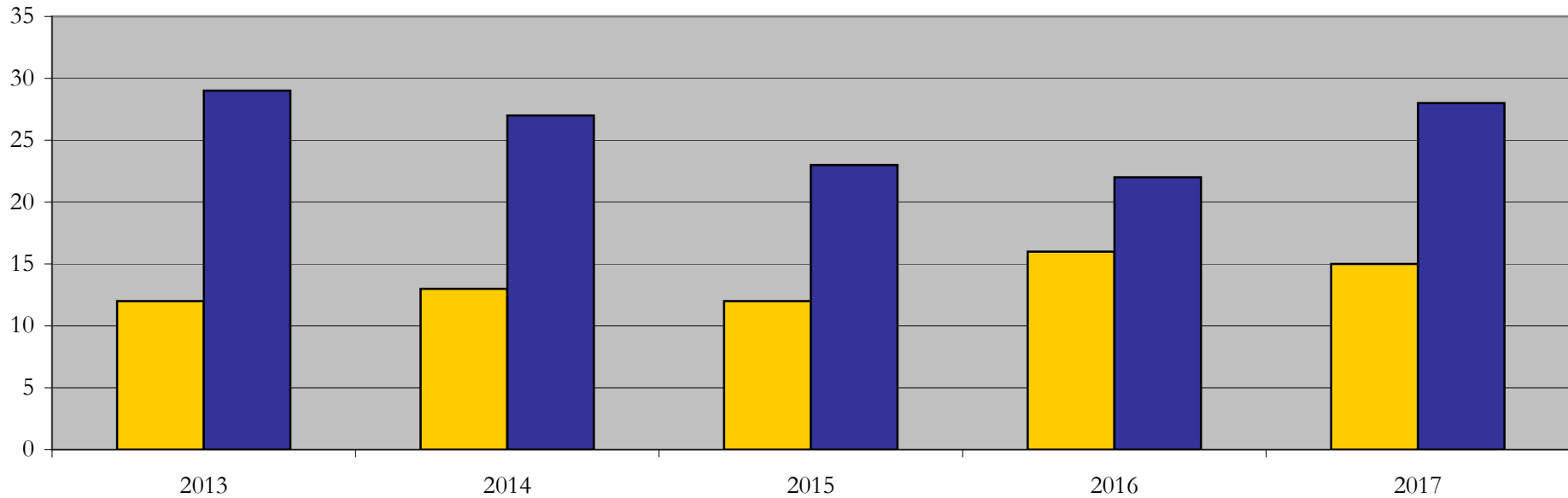
## Enrollment & Degrees Conferred

### by Primary/Secondary, Average Age, State Residency

Biomedical\_Visualization\_MS [20FS1075MS]

Fall 2013 through Fall 2017

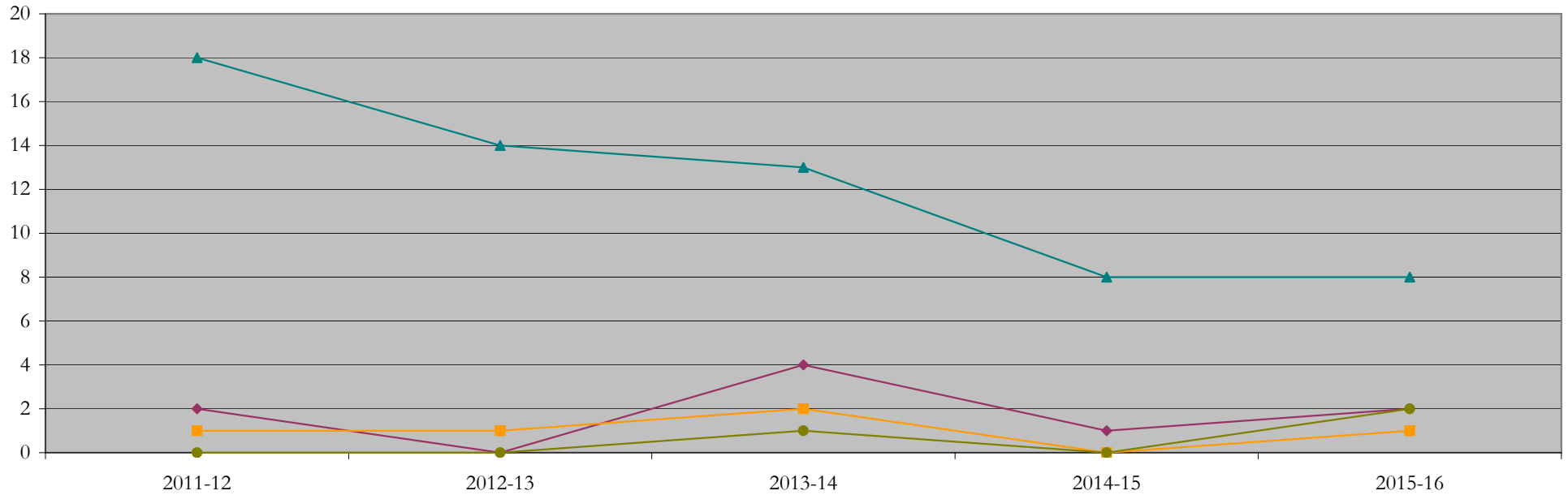
Fall Semester Year	Enrollment			Average Age			State Residency of Total Enrollment					
	Total	Primary	Secondary	Fall New Enrollment	Fall Continuing Enrollment	Academic Year Graduating Class	Residents			Non-Residents		
							Total Enrollment	New Enrollment	Continuing Enrollment	Total Enrollment	New Enrollment	Continuing Enrollment
2013	41	41	0	26	25	25	12	6	6	29	14	15
2014	40	40	0	25	28	25	13	3	10	27	13	14
2015	35	35	0	28	26	26	12	8	4	23	11	12
2016	38	38	0	25	28	25	16	5	11	22	15	7
2017	43	43	0	24	27	25	15	6	9	28	15	13



## Degrees Conferred by Race/Ethnicity

Biomedical\_Visualization\_MS [20FS1075MS]  
AY2011-12 through 2015-16

Academic Year	Total	Under Represented Minorities (URM)								Asian		Native Hawaiian or Pacific		White		Two or More Races		International		Not Reported
		American Indian or Alaska Native		Black or African American		Hispanic / Latino		URM Total		Count	%	Count	%	Count	%	Count	%	Count	%	
		Count	%	Count	%	Count	%	Count	%											
2012 - 2013	24	0	0.0	1	4.2	1	4.2	2	8.3	1	4.2	0	0.0	18	75.0	1	4.2	0	0.0	2
2013 - 2014	17	0	0.0	0	0.0	0	0.0	0	0.0	1	5.9	0	0.0	14	82.4	2	11.8	0	0.0	0
2014 - 2015	22	0	0.0	2	9.1	2	9.1	4	18.2	2	9.1	0	0.0	13	59.1	0	0.0	1	4.5	2
2015 - 2016	10	0	0.0	0	0.0	1	10.0	1	10.0	0	0.0	0	0.0	8	80.0	1	10.0	0	0.0	0
2016 - 2017	14	0	0.0	1	7.1	1	7.1	2	14.3	1	7.1	0	0.0	8	57.1	0	0.0	2	14.3	1



**Notes:** 1) URM stands for Under-Represented Minority and includes American Indian or Alaska Native; Black or African-American; Hispanic / Latino race/ethnicity groups  
2) Individual URM groups, Native Hawaiian Pacific Islander, Two or More Races, and Other race/ethnicity categories left off this chart due to relatively low numbers

## Degrees Conferred

### by Gender

Biomedical\_Visualization\_MS [20FS1075MS]

AY2011-12 through 2015-16

Academic Year	Total	Male		Female		Not Reported
		Count	%	Count	%	
2012 - 2013	24	1	4.2	23	95.8	0
2013 - 2014	17	1	5.9	16	94.1	0
2014 - 2015	22	3	13.6	19	86.4	0
2015 - 2016	10	0	0.0	10	100.0	0
2016 - 2017	14	1	7.1	13	92.9	0

